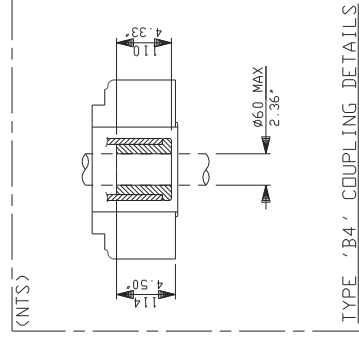
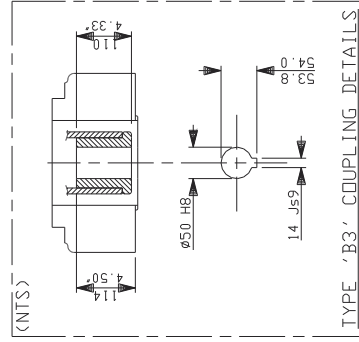
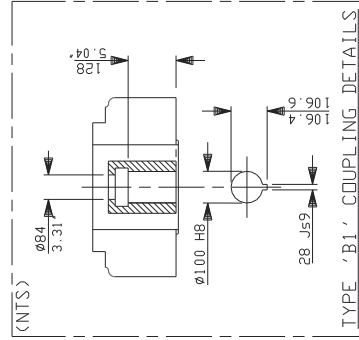
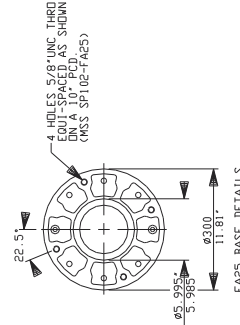
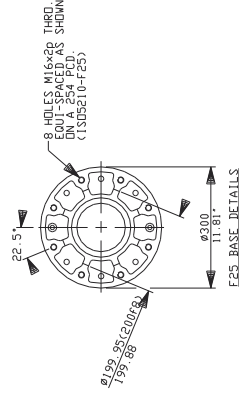
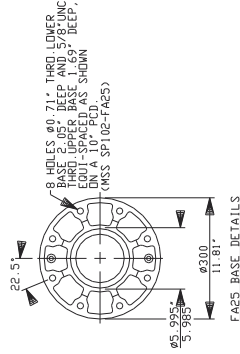
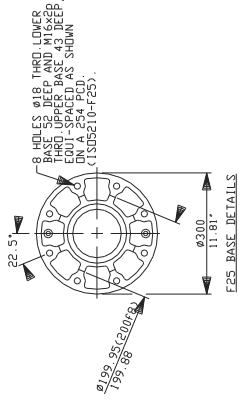


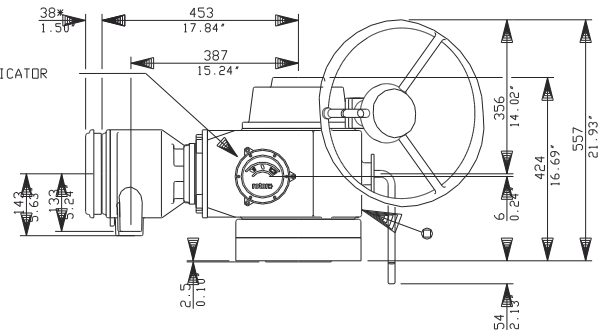
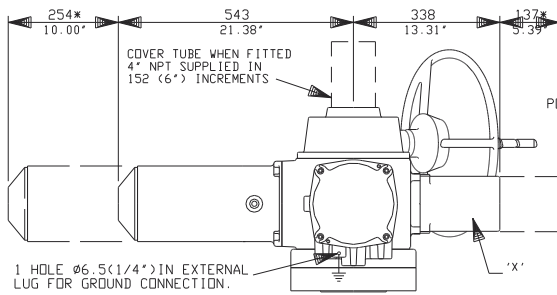
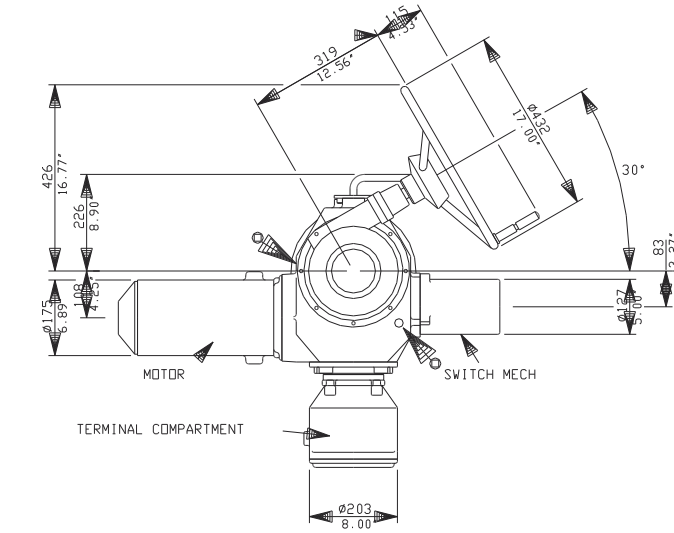
Z0A THRUST BASES



Z0A NON-THRUST BASES

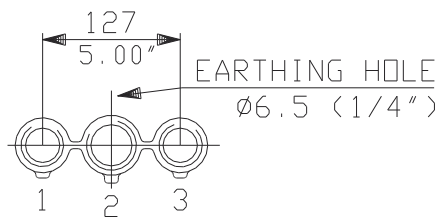


70A SYNCROSET WITH
STANDARD HANDWHEEL

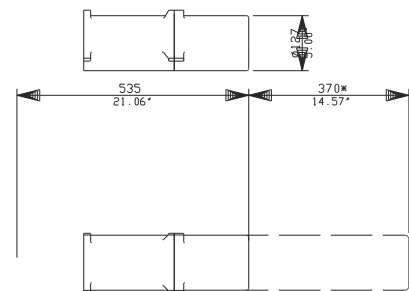


ADD-ON-PAK 1
REPLACES 'X' &
SWITCH MECH IF REQUIRED.

CONDUIT ENTRIES (N.T.S)



Nos.1 & 3 TAPPED 1 1/4" NPT
No.2 TAPPED 1 1/2" NPT
STANDARD ALTERNATIVES IF SPECIFIED
2 X M32, 1 X M40
2 X PG16, 1 X PG29



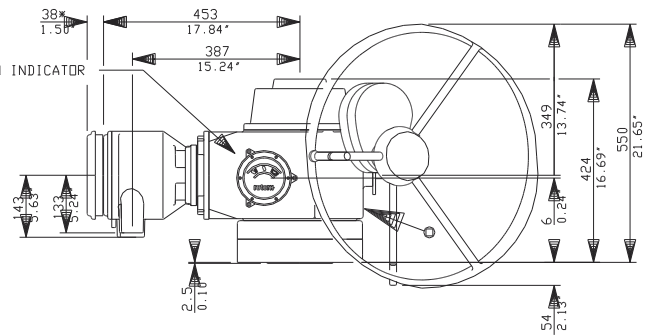
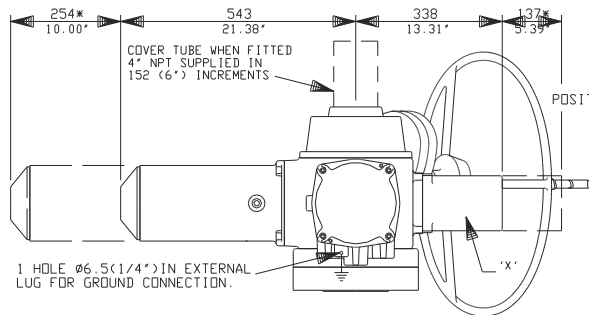
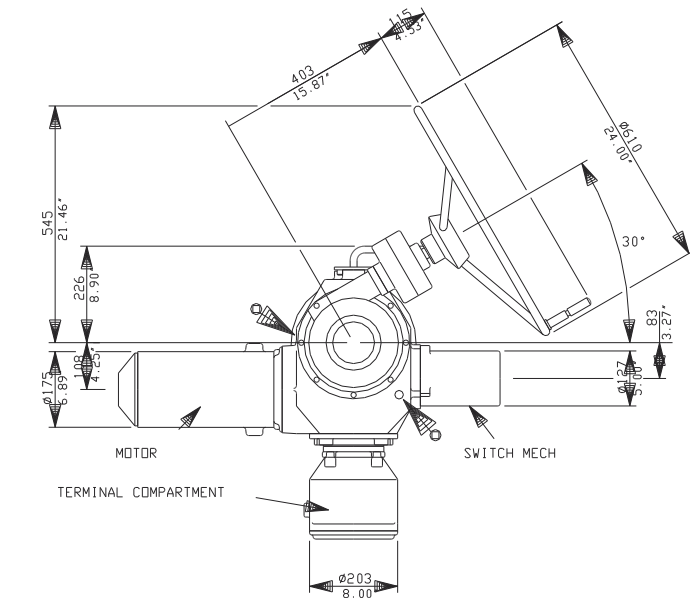
rotork

Rotork Controls Ltd.
Bath, England BA1 3JQ
Bath (01225)733200

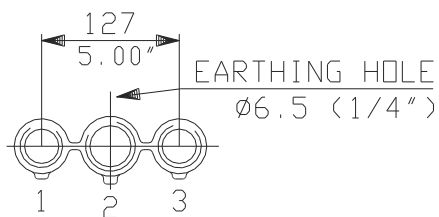
70A(SHW) DATA

Date 141097

70A SYNCROSET WITH OPTIONAL
SPURRED SIDE HANDWHEEL

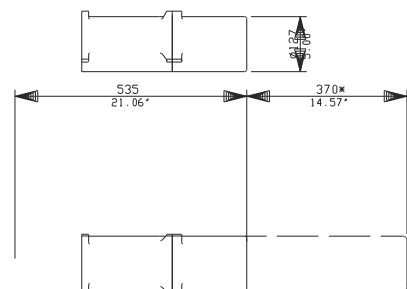


CONDUIT ENTRIES (N.T.S)



Nos.1 & 3 TAPPED 1 1/4" NPT
 No.2 TAPPED 1 1/2" NPT
 STANDARD ALTERNATIVES IF SPECIFIED
 2 X M32, 1 X M40
 2 X PG16, 1 X PG29

ADD-ON-PAK 1
REPLACES 'X' &
SWITCH MECH IF REQUIRED.



rotork

Rotork Controls Ltd.
 Bath, England BA1 3JG
 Bath (01225)733200

70A(SSHW) DATA

Date 141097