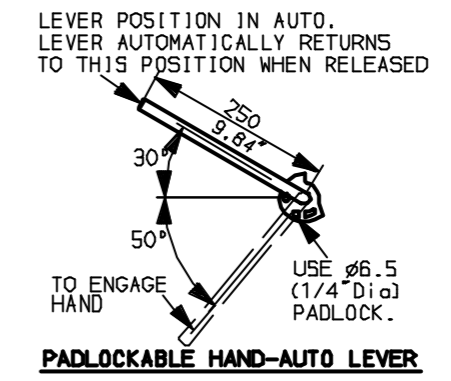
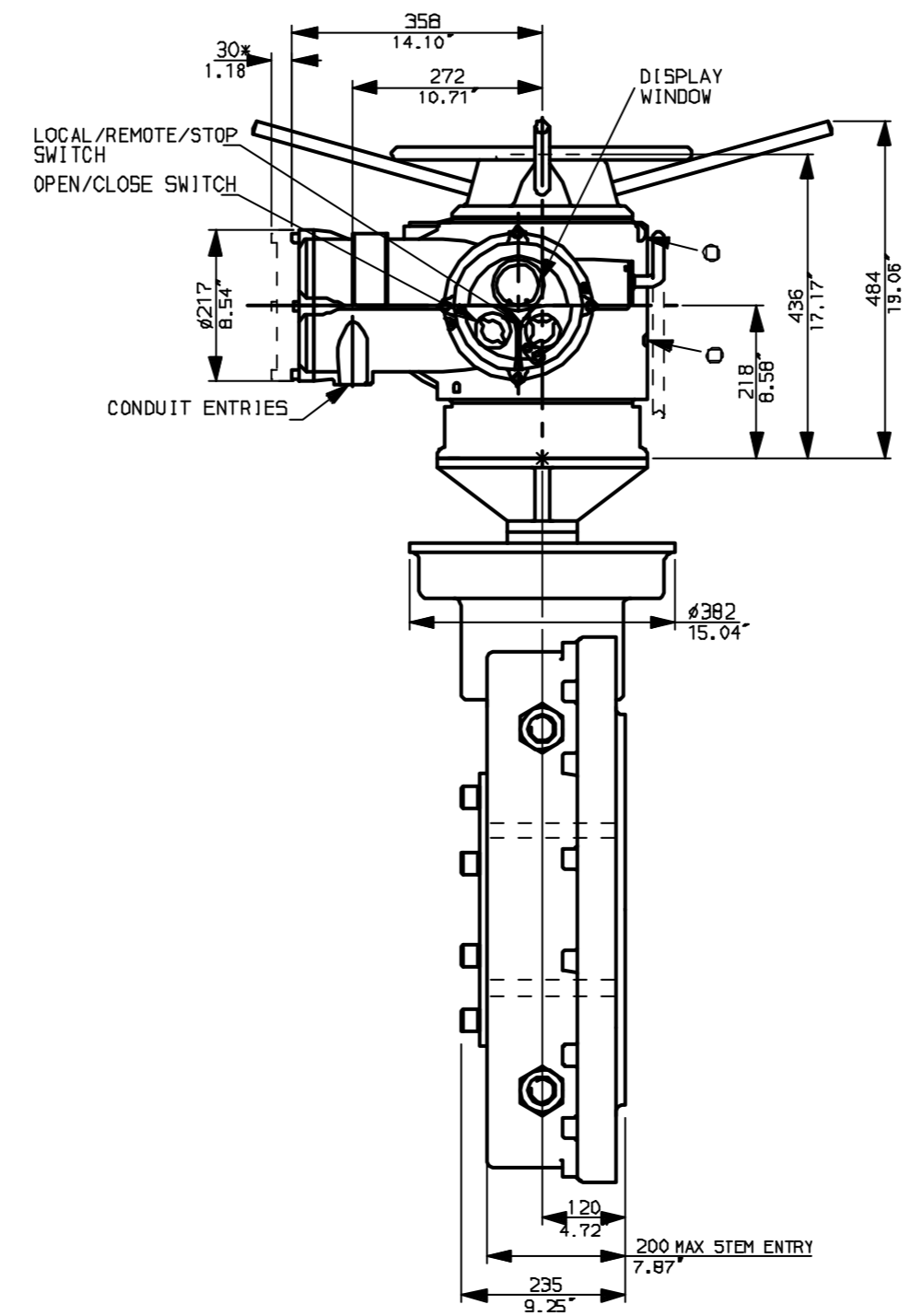
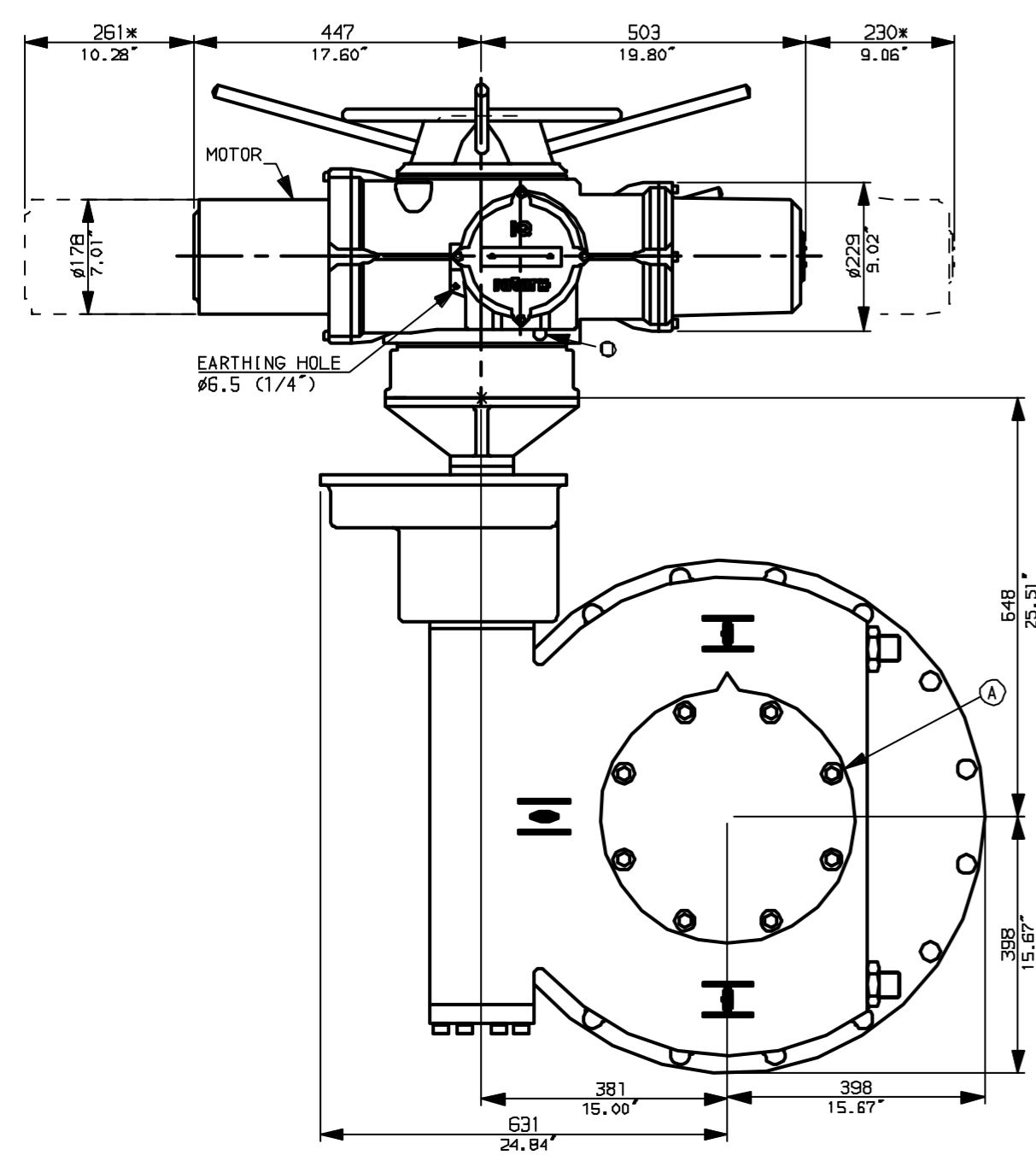
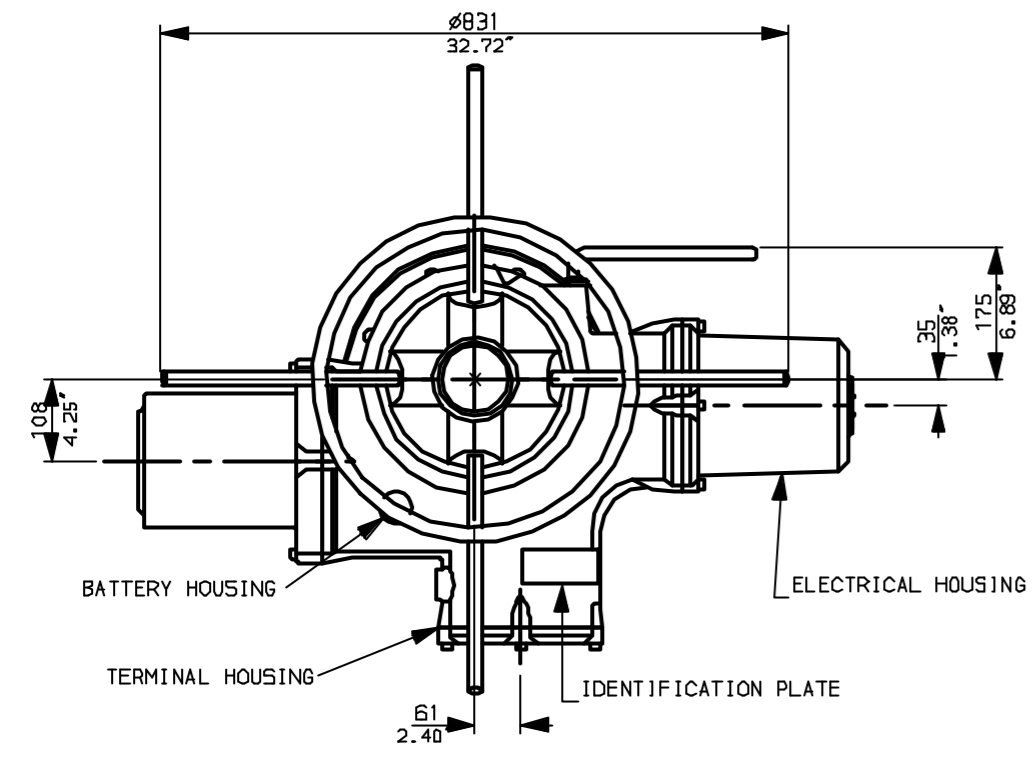
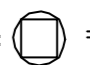
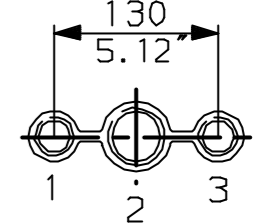


G
F
E
D
C
B
A

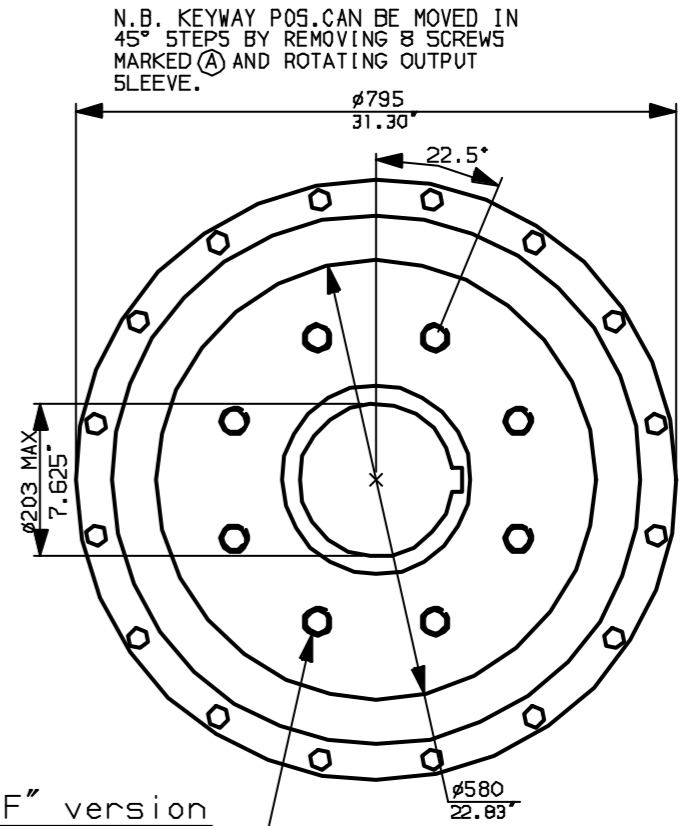


NOTES:
 DIMENSIONS WITH '' INDICATE COVER REMOVAL ALLOWANCE
 :NETT WEIGHT = 681kg (1498lbs)
 : = OIL FILLER/DRAIN PLUG
 :THE INTERFACE PROVIDED FOR MOUNTING THE ACTUATOR OR SECOND STAGE GEARBOX ONTO THE VALVE SHOULD CONFORM TO GOOD ENGINEERING PRACTICES, ENSURING ADEQUATELY TOLERANCED LIMITS FOR PARALLELISM, PERPENDICULARITY AND CONCENTRICITY.

CONDUIT ENTRIES (N.T.S)



Nos.1 & 3 TAPPED 1" NPT
 No.2 TAPPED 1 1/2" NPT
 STD ALTERNATIVES IF SPECIFIED
 2 X M25, 1 X M40
 2 X PG16, 1 X PG29



"F" version
 8 HOLES TAPPED M36 x 36 DP
 EQUI-SPACED AS SHOWN ON A
 406 PCD (150 5211-F40).

"FA" version
 8 HOLES TAPPED 1.25"UNCx1.42"dp
 EQUI-SPACED AS SHOWN ON A
 16" PCD (M55 5P101-FA40).

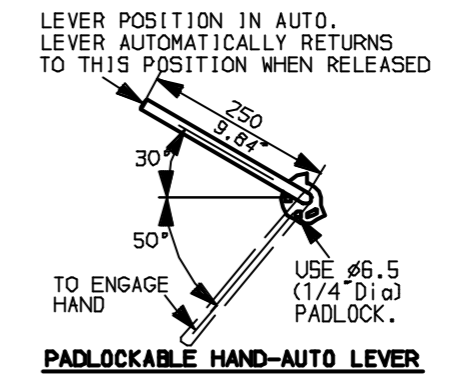


Rotork Controls Ltd. Bath England, BA1 3JQ. (Phone 01225-733200)	Title IQ40, THW, IW11 (+115)R,	
Rotork Controls Inc. Rochester, NY 14624 (Phone 585-328-1550)	STANDARD DIMENSIONAL DATA	
	Drawn CAD	Checked PRE Ref Data Sheet
	Date April 04	Job No IQ40THW_IW11R

01 Issue	First Issue.
Scale	1:10 THIRD ANGLE PROJECTION
Drawing Number	IQ40THW_IW11R

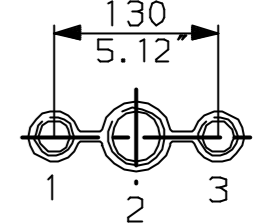
1 | 2 | 3 | 4 | 5 | 6 | 7 | 8 | 9 | 10

G
F
E
D
C
B
A

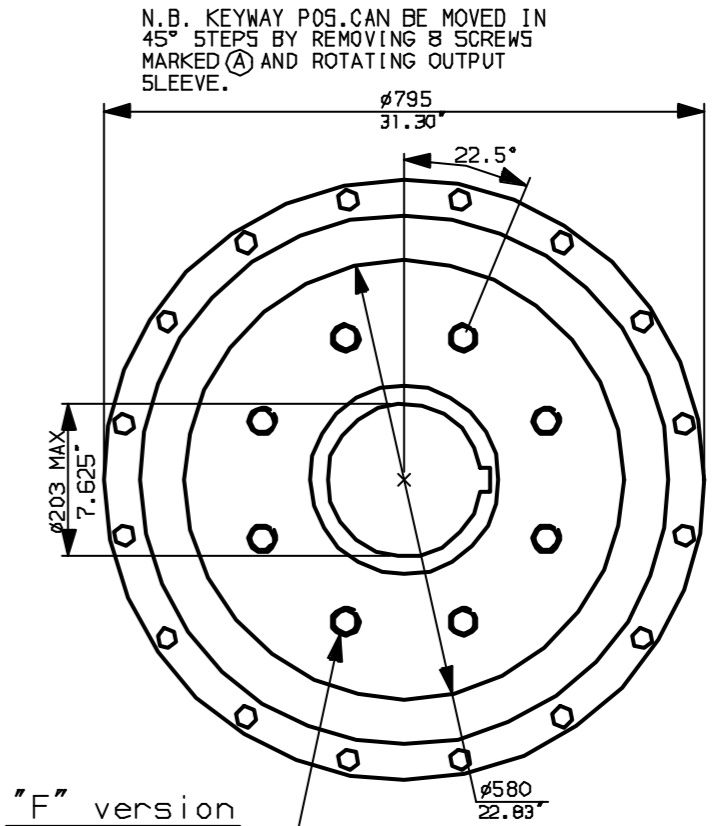
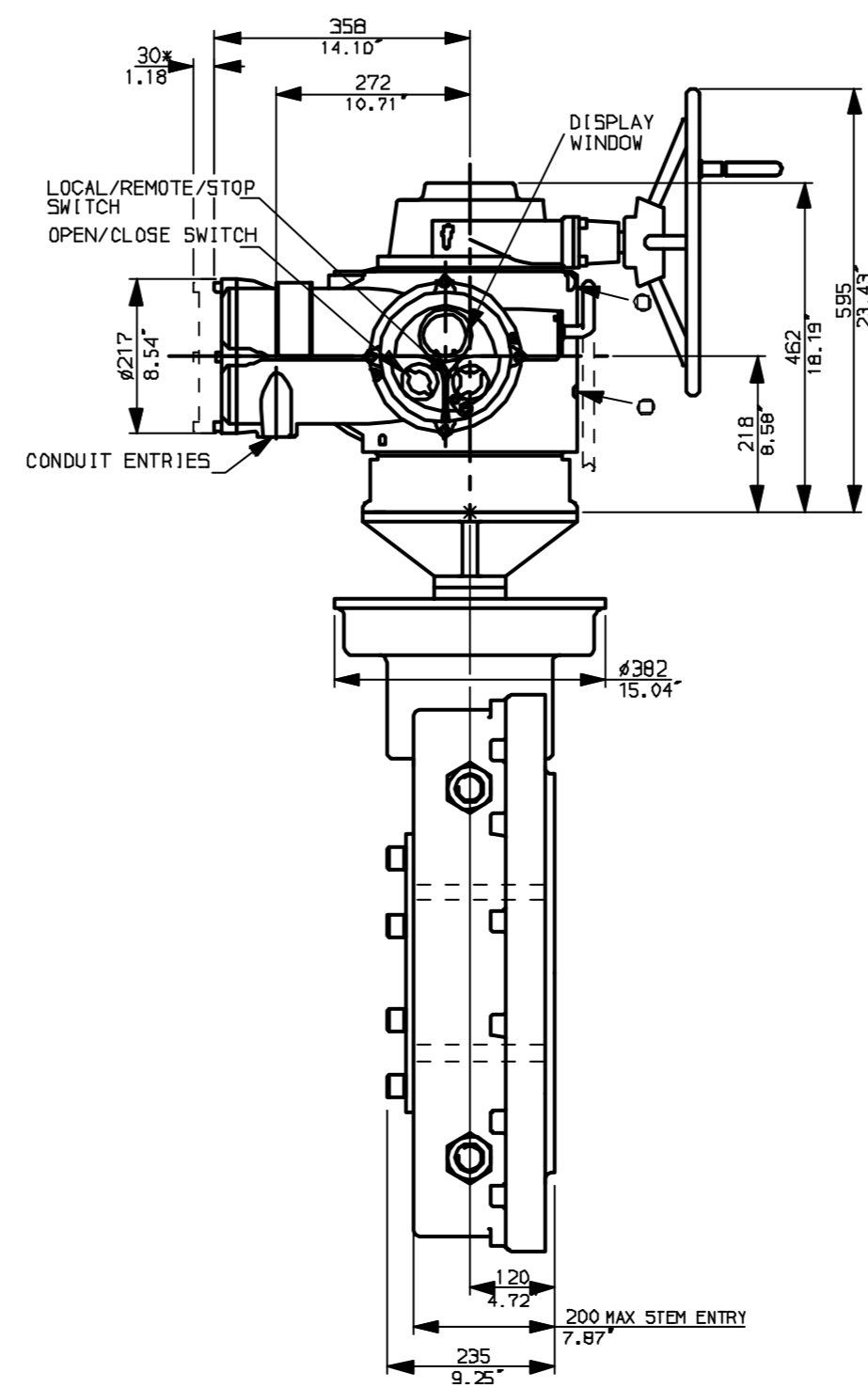
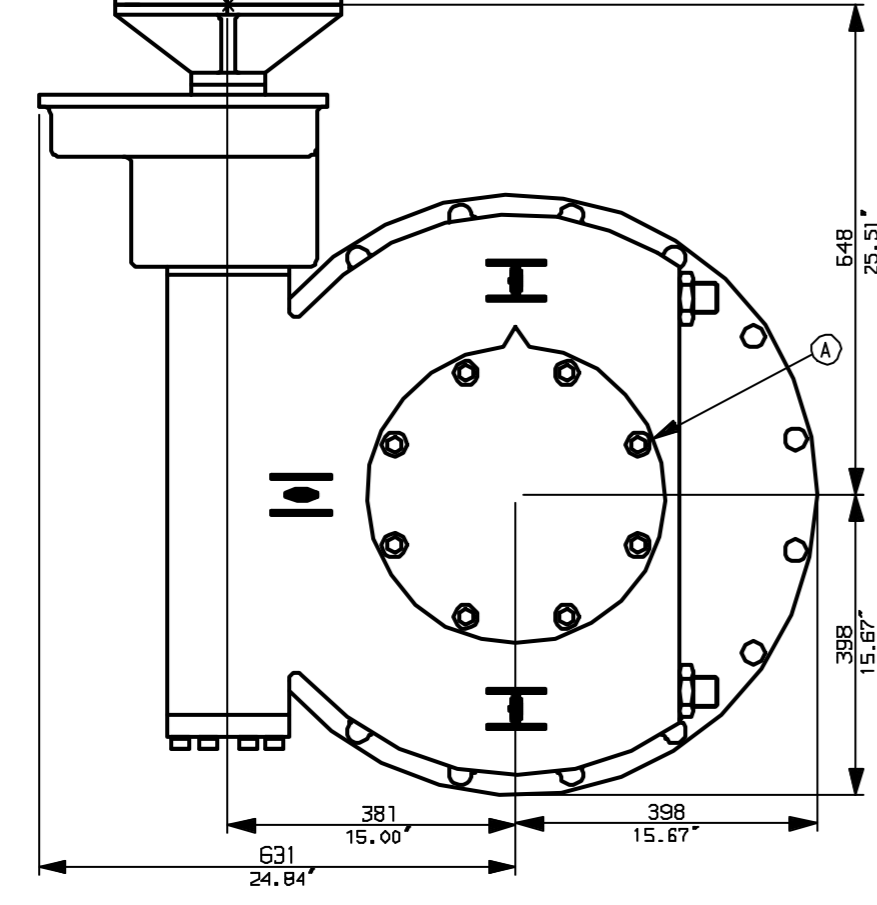
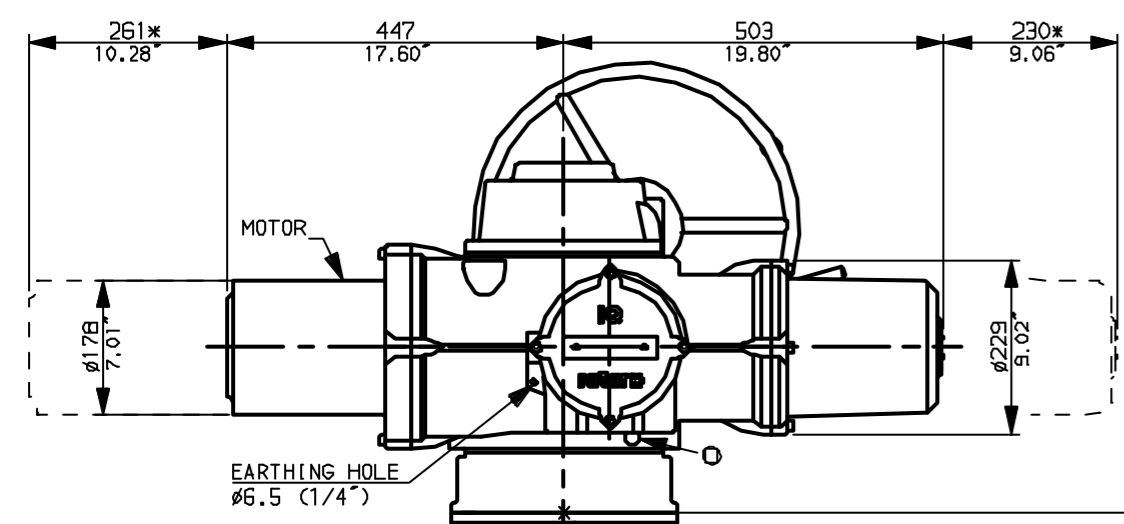
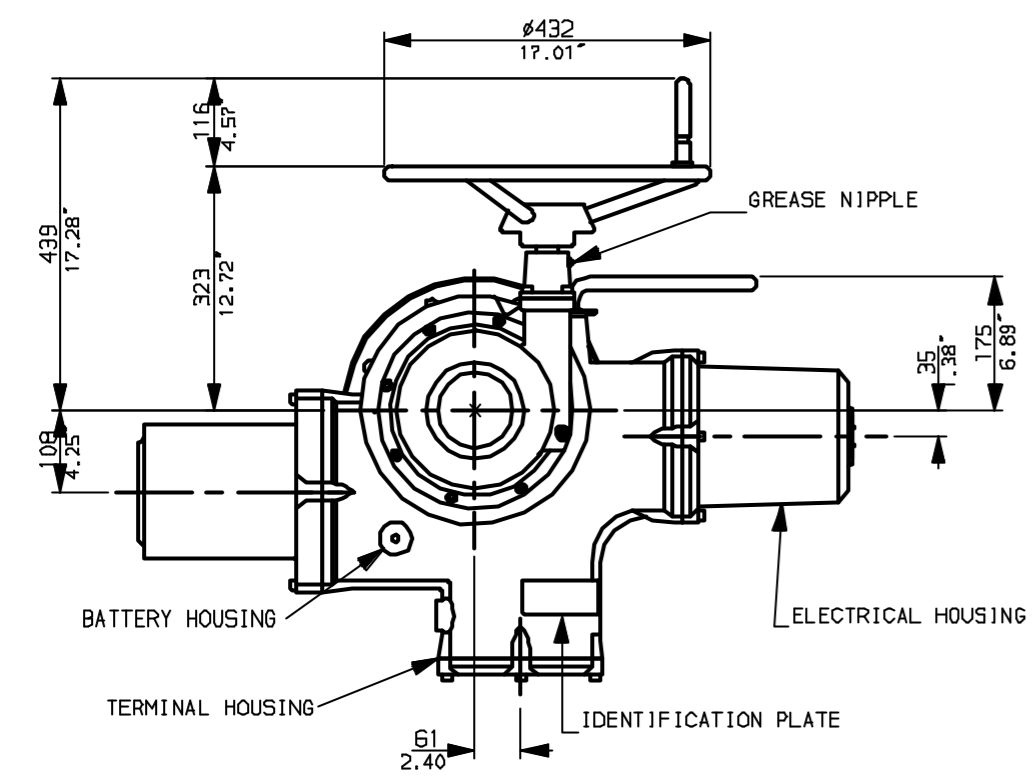


NOTES:
 * DIMENSIONS WITH '*' INDICATE COVER REMOVAL ALLOWANCE
 NETT WEIGHT = 681kg (1498lbs)
 ○ = OIL FILLER/DRAIN PLUG
 THE INTERFACE PROVIDED FOR MOUNTING THE ACTUATOR OR SECOND STAGE GEARBOX ONTO THE VALVE SHOULD CONFORM TO GOOD ENGINEERING PRACTICES, ENSURING ADEQUATELY TOLERANCED LIMITS FOR PARALLELISM, PERPENDICULARITY AND CONCENTRICITY.

CONDUIT ENTRIES (N.T.S)



Nos.1 & 3 TAPPED 1" NPT
 No.2 TAPPED 1 1/2" NPT
 STD ALTERNATIVES IF SPECIFIED
 2 X M25, 1 X M40
 2 X PG16, 1 X PG29



"F" version
 8 HOLES TAPPED M36 x 36 DP
 EQUI-SPACED AS SHOWN ON A
 406 PCD (150 5211-F40).

"FA" version
 8 HOLES TAPPED 1.25"UNCx1.42"dp
 EQUI-SPACED AS SHOWN ON A
 16" PCD (MSS 5P101-FA40).



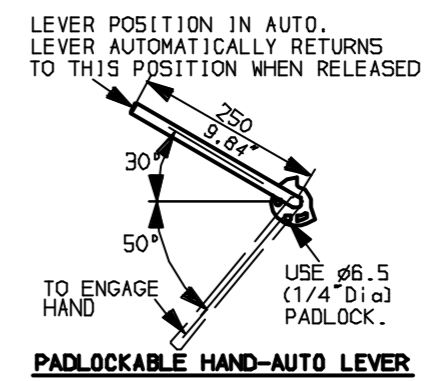
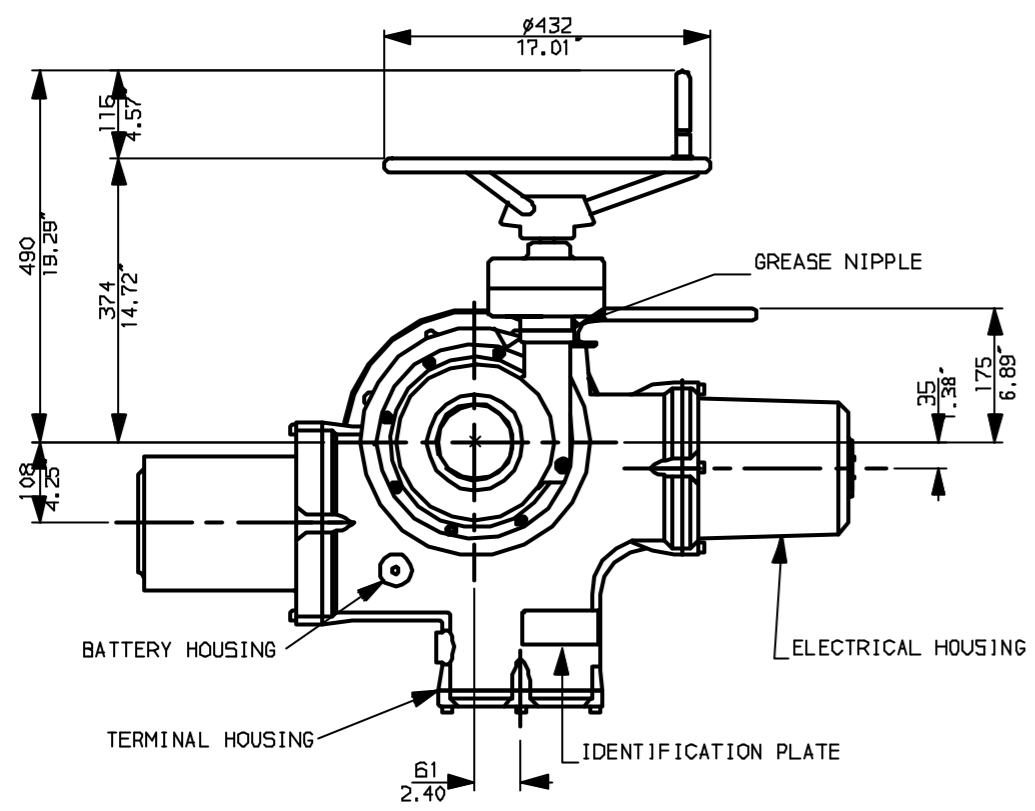
Rotork Controls Ltd.
 Bath England, BA1 3JQ.
 (Phone 01225-733200)
 Rotork Controls Inc.
 Rochester, NY 14624
 (Phone 585-328-1550)

Title IQ40, SHW, IW11 (+115)R,		
STANDARD DIMENSIONAL DATA		
Drawn CAD	Checked PRE	Ref Data Sheet
Date April 04	Job No	IQ40SHW_IW11R

01	First Issue.
Scale	1:10 THIRD ANGLE PROJECTION
Drawing Number	IQ40SHW_IW11R

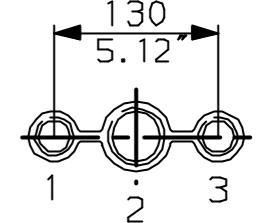
1 | 2 | 3 | 4 | 5 | 6 | 7 | 8 | 9 | 10

G
F
E
D
C
B
A

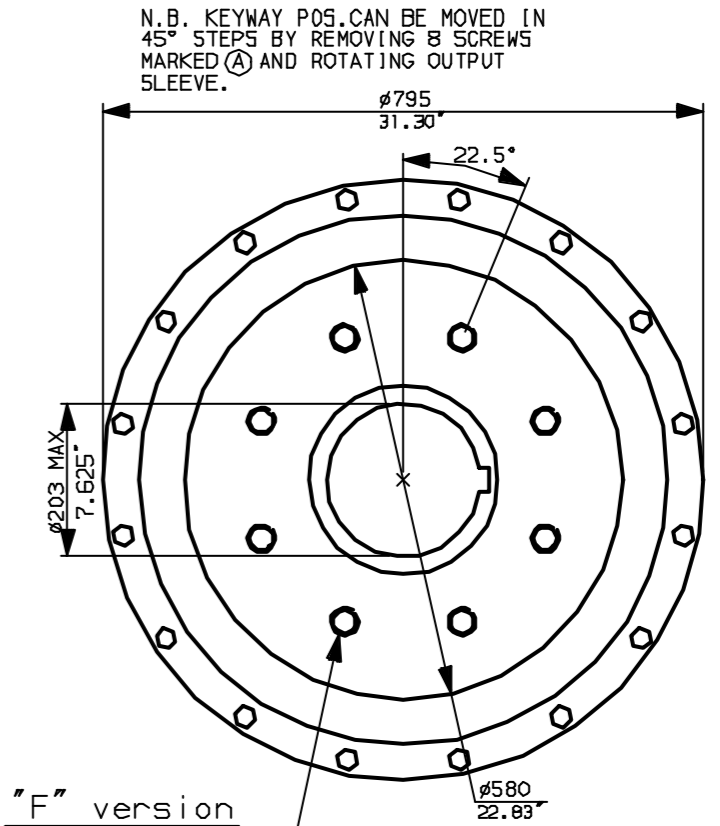
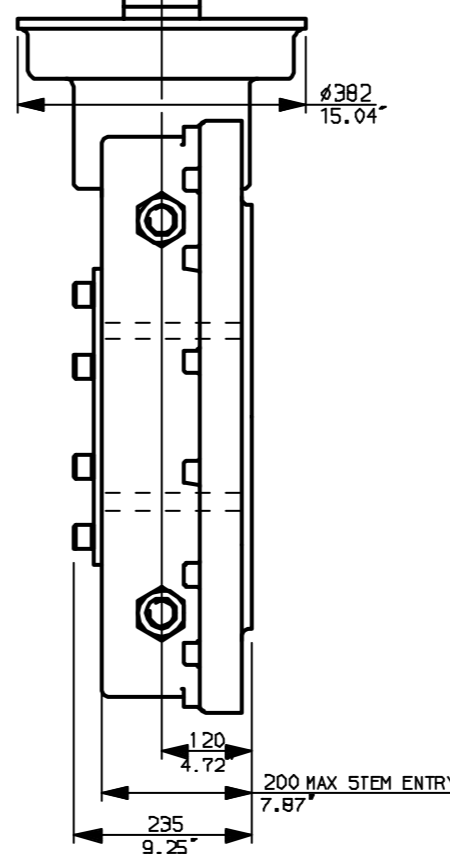
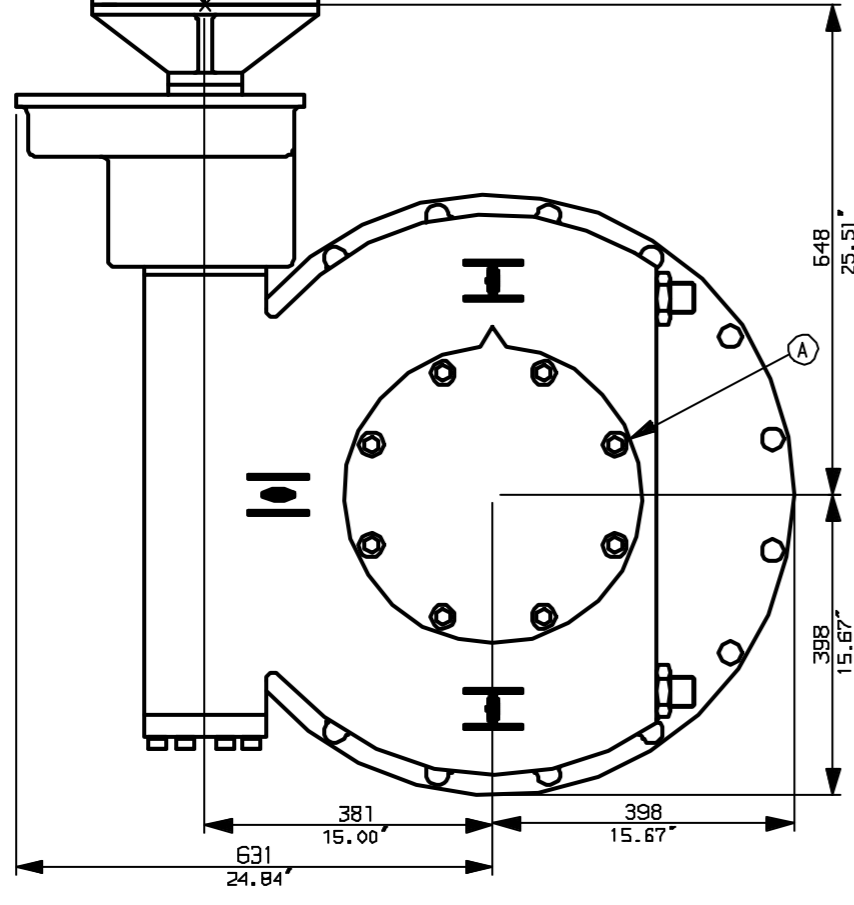
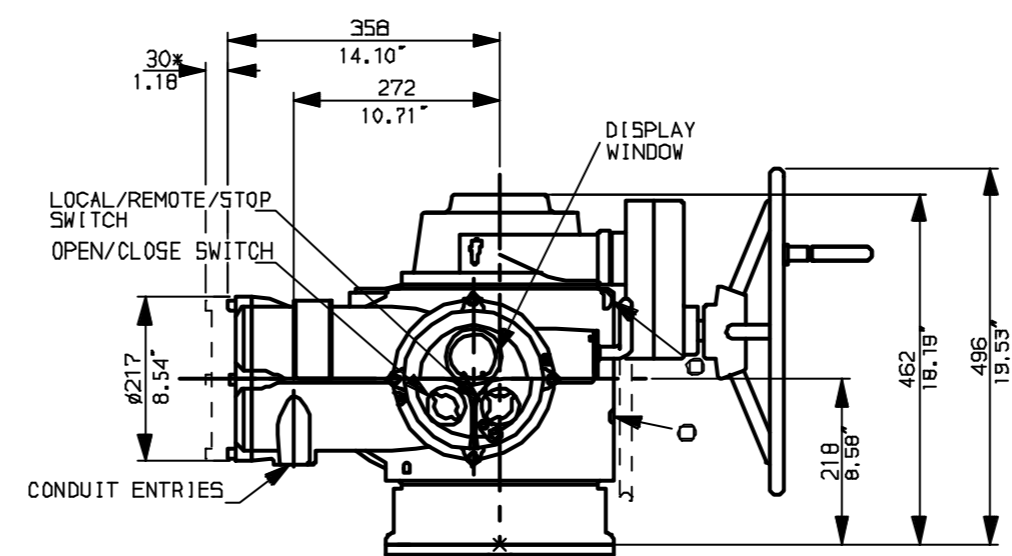
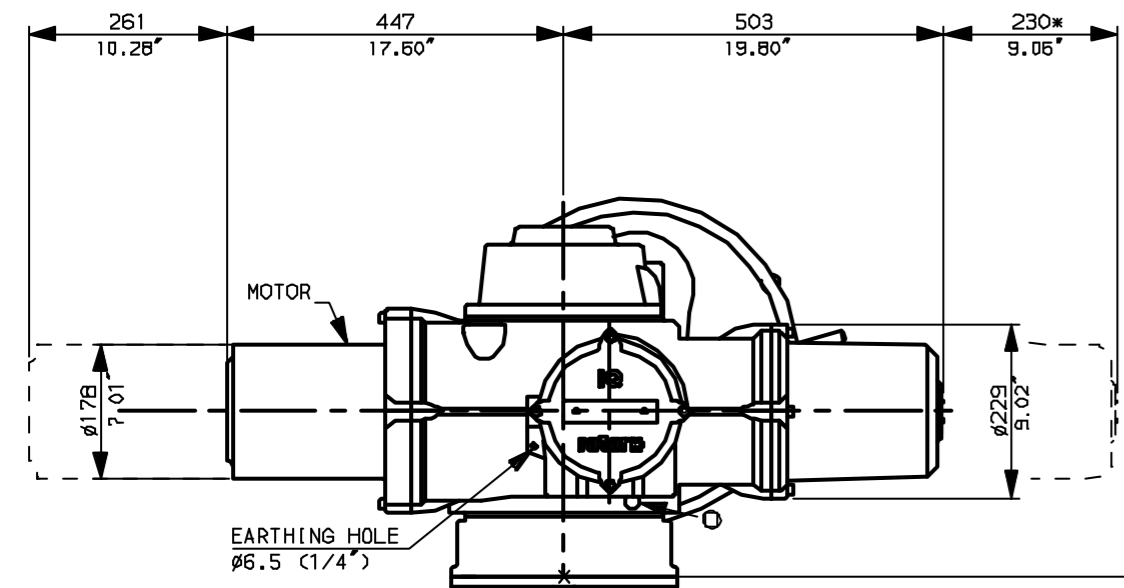


NOTES:
 * DIMENSIONS WITH '*' INDICATE COVER REMOVAL ALLOWANCE
 : NETT WEIGHT = 681kg (1498lbs)
 : \odot = OIL FILLER/DRAIN PLUG
 : THE INTERFACE PROVIDED FOR MOUNTING THE ACTUATOR OR SECOND STAGE GEARBOX ONTO THE VALVE SHOULD CONFORM TO GOOD ENGINEERING PRACTICES, ENSURING ADEQUATELY TOLERANCED LIMITS FOR PARALLELISM, PERPENDICULARITY AND CONCENTRICITY.

CONDUIT ENTRIES (N.T.S)



Nos.1 & 3 TAPPED 1" NPT
 No.2 TAPPED 1 1/2" NPT
 STD ALTERNATIVES IF SPECIFIED
 2 X M25, 1 X M40
 2 X PG16, 1 X PG29



"F" version
 8 HOLES TAPPED M36 x 36 DP
 EQUI-SPACED AS SHOWN ON A
 406 PCD (150 5211-F40).

"FA" version
 8 HOLES TAPPED 1.25" UNC x 1.42" dp
 EQUI-SPACED AS SHOWN ON A
 16" PCD (MSS 5P101-FA40).



Rotork Controls Ltd.
 Bath England, BA1 3JQ.
 (Phone 01225-733200)
 Rotork Controls Inc.
 Rochester, NY 14624
 (Phone 585-328-1550)

Title IQ40, SSHW, IW11 (+115)R,	
STANDARD DIMENSIONAL DATA	
Drawn CAD	Checked PRE Ref Data Sheet
Date April 04	Job No IQ40SSHW_IW11R

01	First Issue.
Scale	1:10 THIRD ANGLE PROJECTION
Drawing Number	IQ40SSHW_IW11R

1 | 2 | 3 | 4 | 5 | 6 | 7 | 8 | 9 | 10