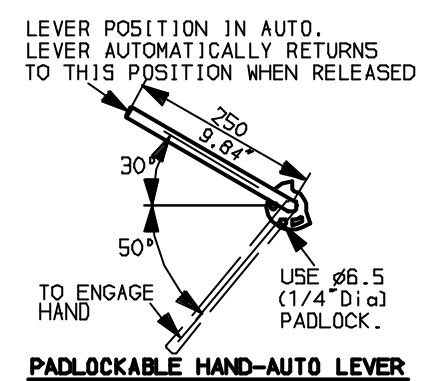
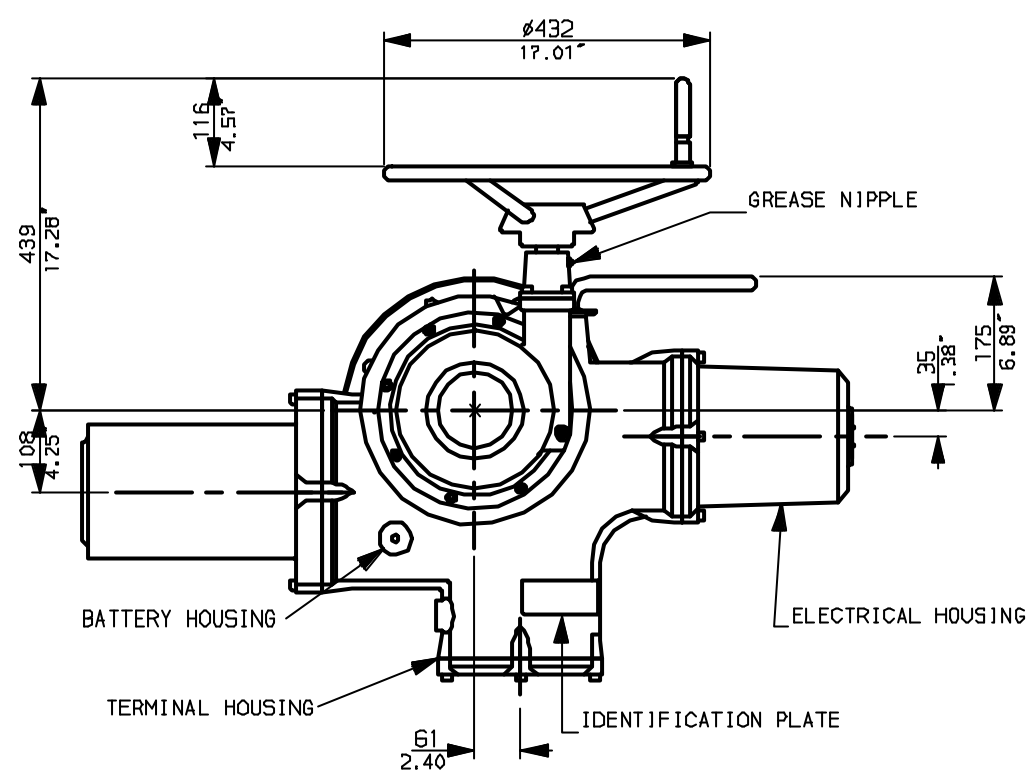
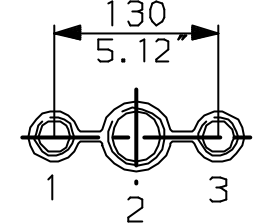


G  
F  
E  
D  
C  
B  
A

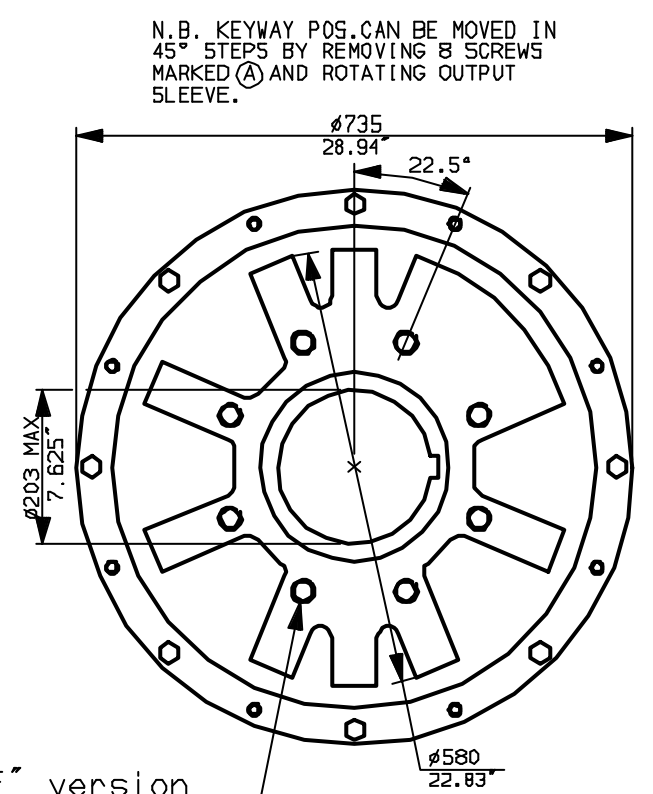
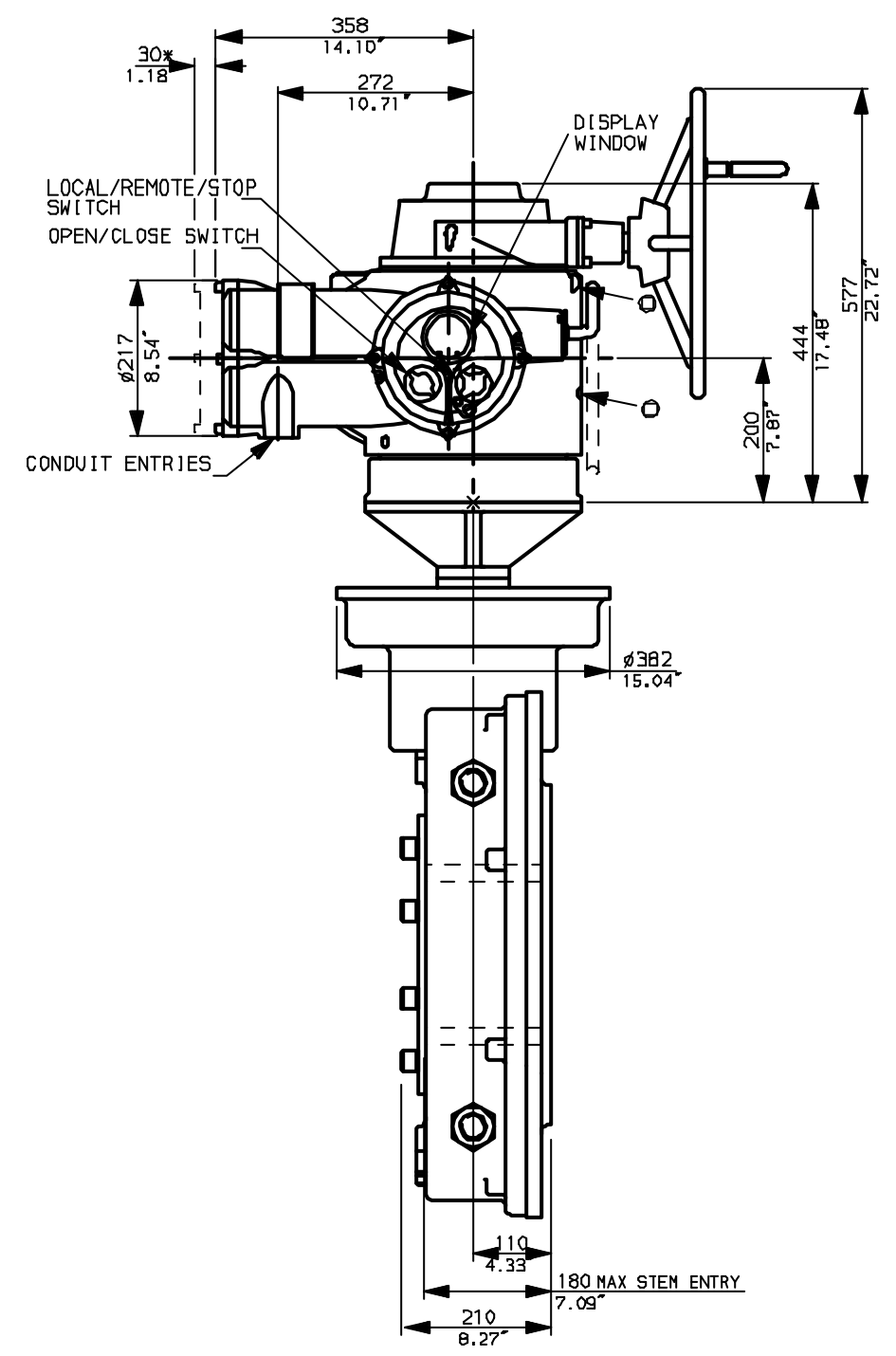
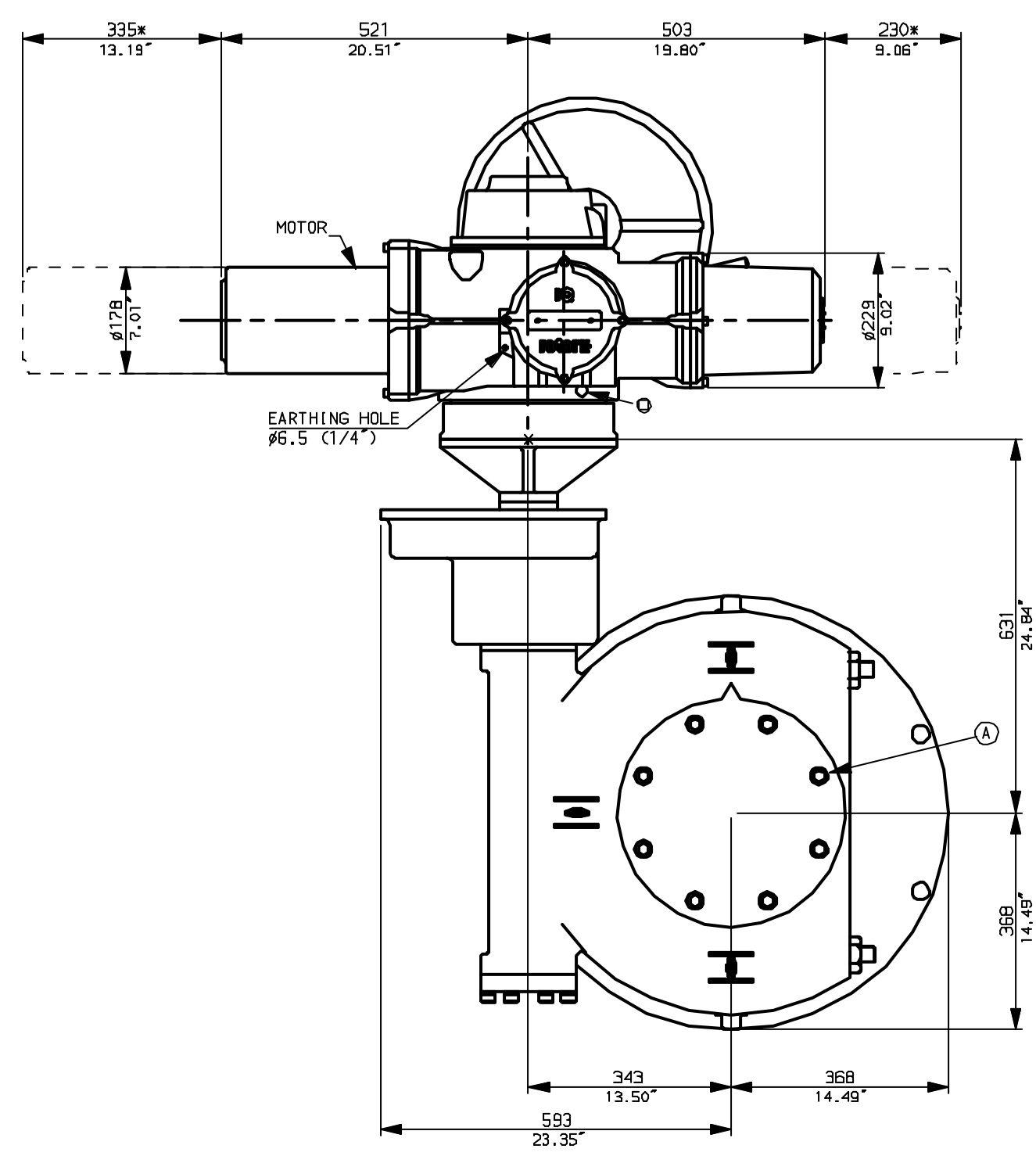


**NOTES:**  
 \* DIMENSIONS WITH '\*' INDICATE COVER REMOVAL ALLOWANCE  
 NETT WEIGHT = 623kg (1371lbs)  
 ○ = OIL FILLER/DRAIN PLUG  
 THE INTERFACE PROVIDED FOR MOUNTING THE ACTUATOR OR SECOND STAGE GEARBOX ONTO THE VALVE SHOULD CONFORM TO GOOD ENGINEERING PRACTICES, ENSURING ADEQUATELY TOLERANCED LIMITS FOR PARALLELISM, PERPENDICULARITY AND CONCENTRICITY.

**CONDUIT ENTRIES (N.T.S)**



Nos.1 & 3 TAPPED 1" NPT  
 No.2 TAPPED 1 1/2" NPT  
 STD ALTERNATIVES IF SPECIFIED  
 2 X M25, 1 X M40  
 2 X PG16, 1 X PG29



"F" version  
 8 HOLES TAPPED M30 x 36 DEEP, EQUI-SPACED OFF CENTRES ON A 356 P.C.D. (150 5211-F35).

"FA" version  
 8 HOLES TAPPED 1" UNC x 1.42" dp EQUI-SPACED OFF CENTRES ON A 14" PCD (M55 5P101-FA35).

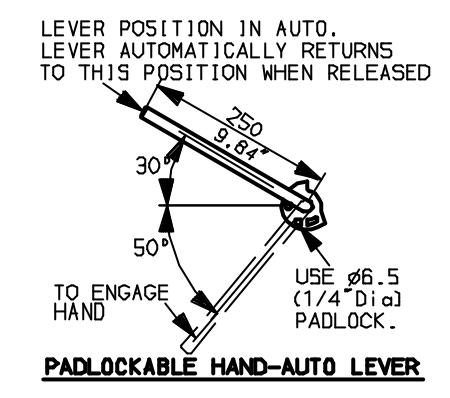
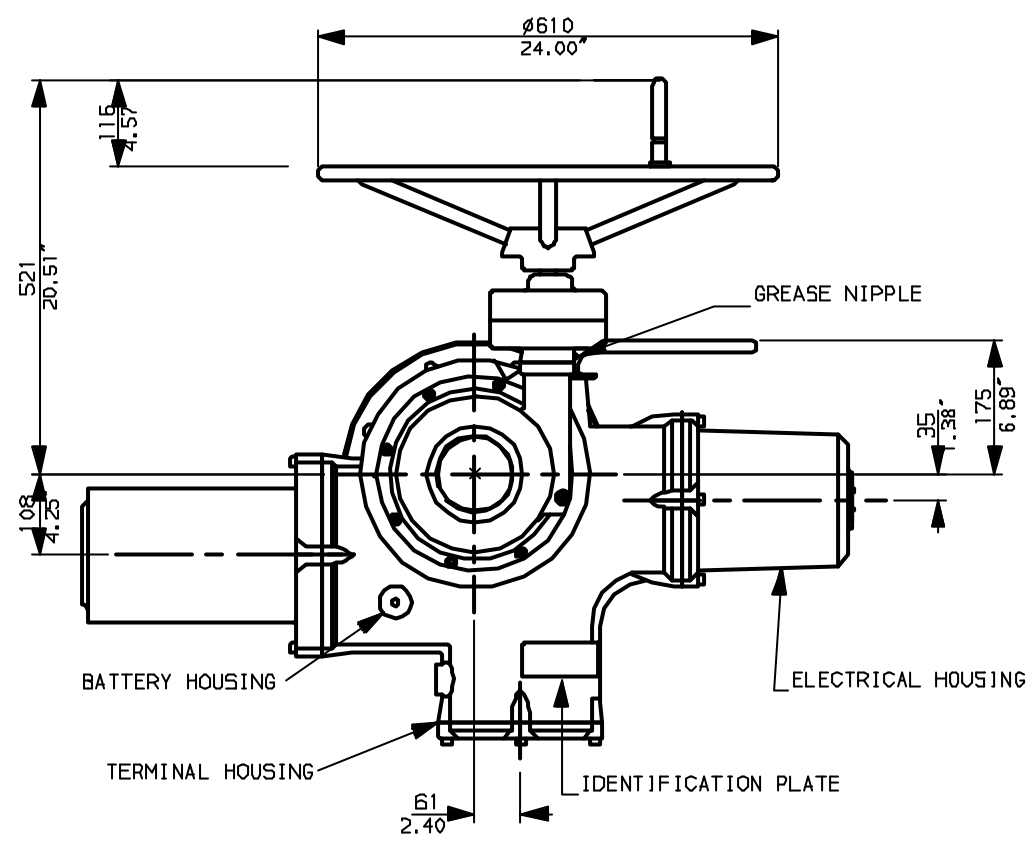


Rotork Controls Ltd. Bath England, BA1 3JQ. (Phone 01225-733200)	Title IQ70, 90, SHW, IW10R,	
Rotork Controls Inc. Rochester, NY 14624 (Phone 585-328-1550)	STANDARD DIMENSIONAL DATA	
	Drawn CAD	Checked PRE Ref Data Sheet
	Date April 04	Job No IQ55HW_IW10R

01 Issue	First Issue.
Scale	1:10 THIRD ANGLE PROJECTION
Drawing Number	IQ55HW_IW10R

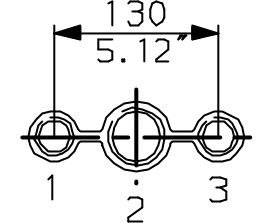
1 | 2 | 3 | 4 | 5 | 6 | 7 | 8 | 9 | 10

G  
F  
E  
D  
C  
B  
A

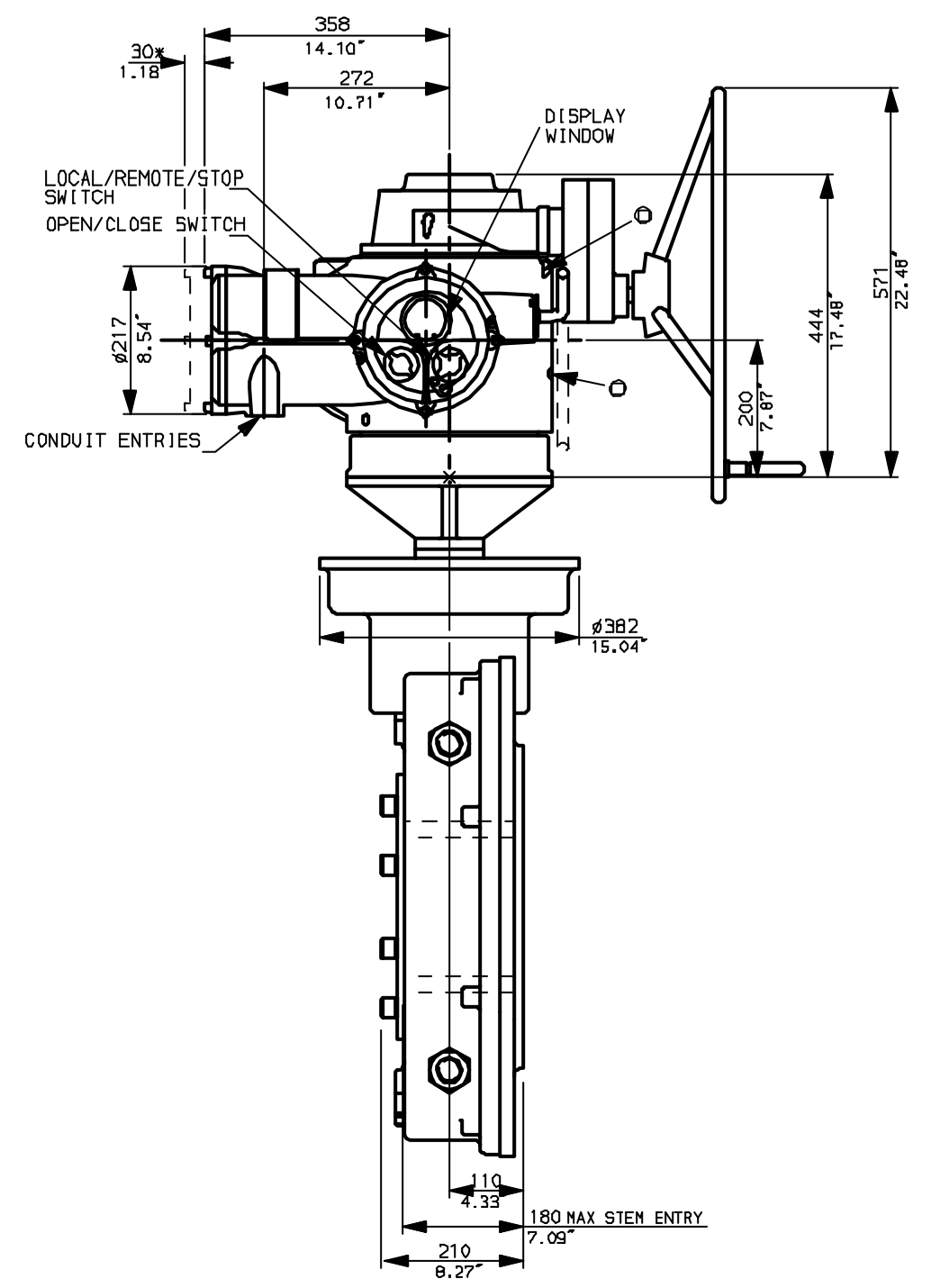
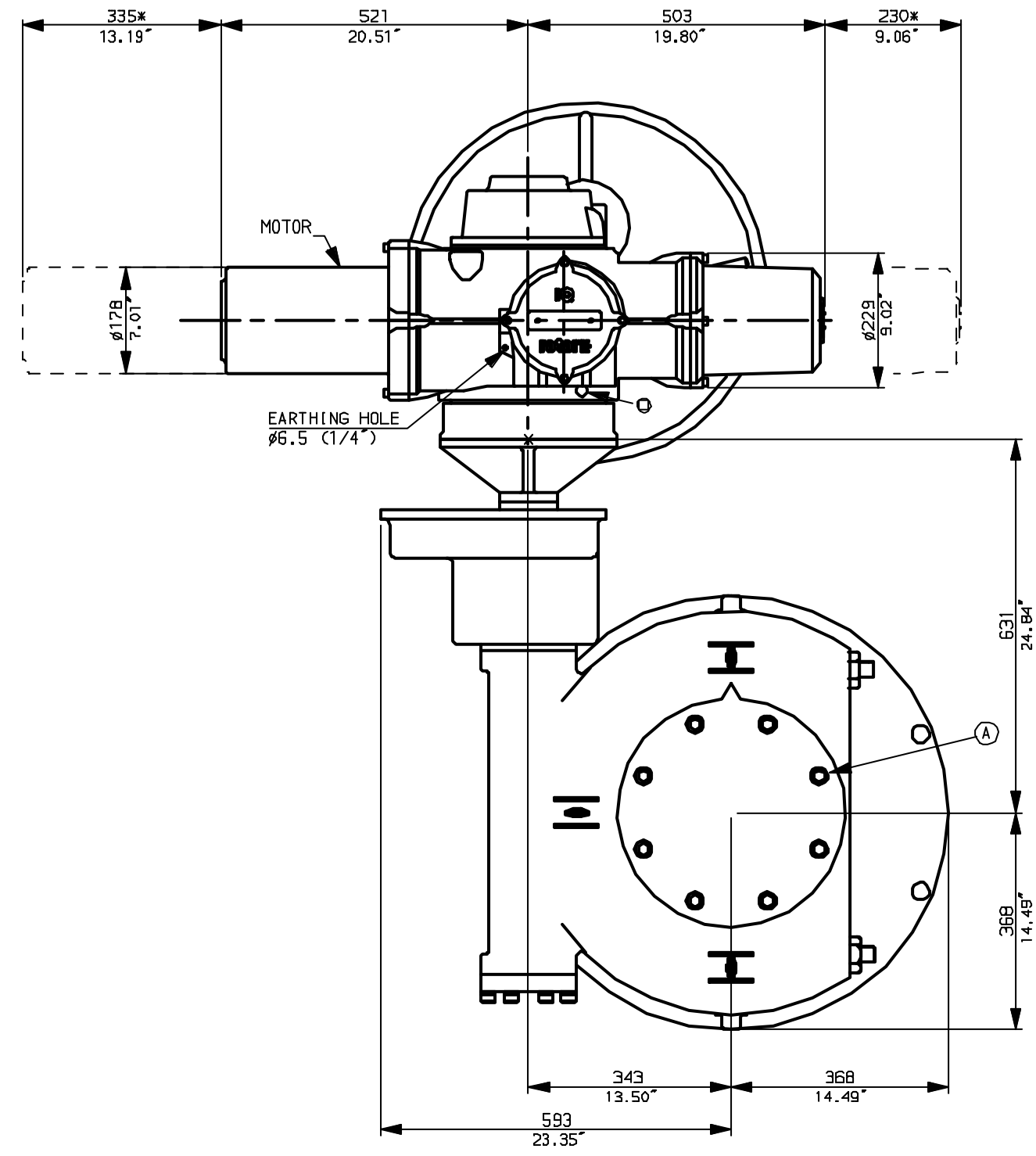


**NOTES:**  
 \* DIMENSIONS WITH '\*' INDICATE COVER REMOVAL ALLOWANCE  
 : NETT WEIGHT = 623kg (1371lbs)  
 :  $\odot$  = OIL FILLER/DRAIN PLUG  
 : THE INTERFACE PROVIDED FOR MOUNTING THE ACTUATOR OR SECOND STAGE GEARBOX ONTO THE VALVE SHOULD CONFORM TO GOOD ENGINEERING PRACTICES, ENSURING ADEQUATELY TOLERANCED LIMITS FOR PARALLELISM, PERPENDICULARITY AND CONCENTRICITY.

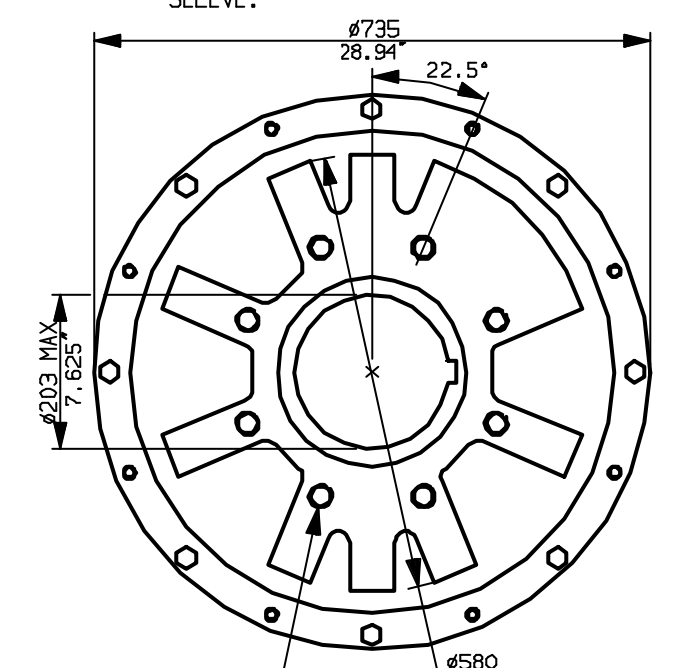
**CONDUIT ENTRIES (N.T.S)**



Nos.1 & 3 TAPPED 1" NPT  
 No.2 TAPPED 1 1/2" NPT  
 STD ALTERNATIVES IF SPECIFIED  
 2 X M25, 1 X M40  
 2 X PG16, 1 X PG29



N.B. KEYWAY POS CAN BE MOVED IN 45° STEPS BY REMOVING 8 SCREWS MARKED (A) AND ROTATING OUTPUT SLEEVE.



"F" version  
 8 HOLES TAPPED M30 x 36 DEEP, EQUI-SPACED OFF CENTRES ON A 356 P.C.D. (M55 5P101-FA35).

"FA" version  
 8 HOLES TAPPED 1"UNCx1.42"dp EQUI-SPACED OFF CENTRES ON A 14" PCD (M55 5P101-FA35).



Rotork Controls Ltd. Bath England, BA1 3JQ. (Phone 01225-733200)	Title IQ70, 90, SSHW, IW10R, STANDARD DIMENSIONAL DATA	
Rotork Controls Inc. Rochester, NY 14624 (Phone 585-328-1550)	Drawn CAD	Checked PRE
	Ref Data Sheet	
Date April 04	Job No	<b>IQ5SSHW_IW10R</b>

01 Issue	First Issue.
Scale	1:10 THIRD ANGLE PROJECTION
Drawing Number	<b>IQ5SSHW_IW10R</b>

1 | 2 | 3 | 4 | 5 | 6 | 7 | 8 | 9 | 10