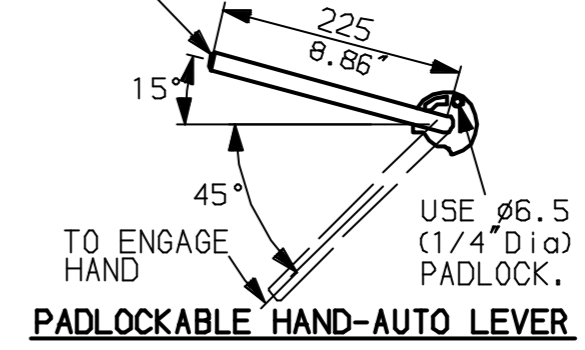
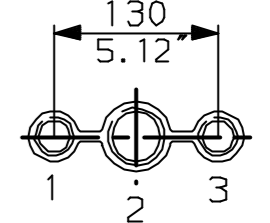


LEVER POSITION IN AUTO.
LEVER AUTOMATICALLY RETURNS
TO THIS POSITION WHEN RELEASED

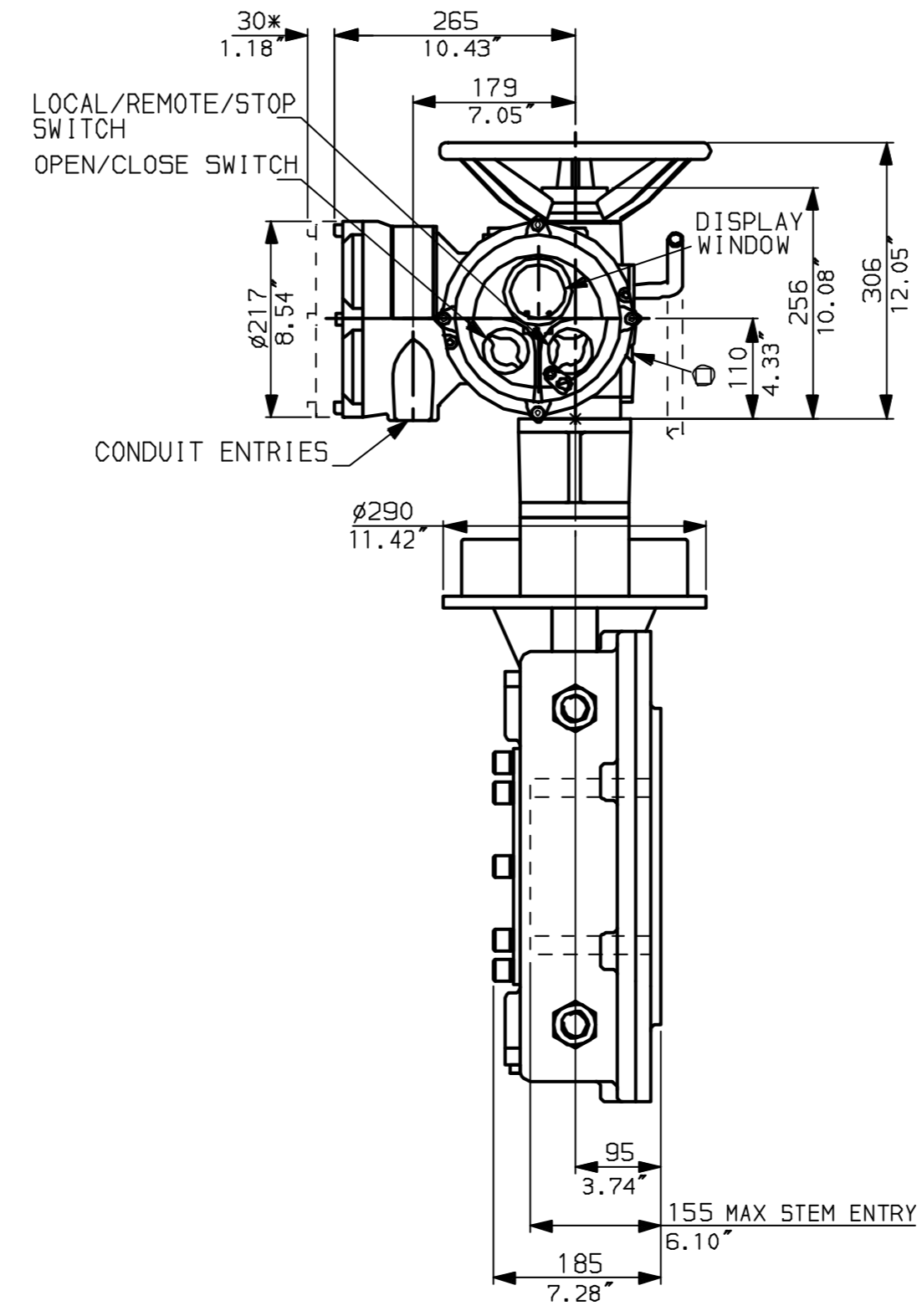
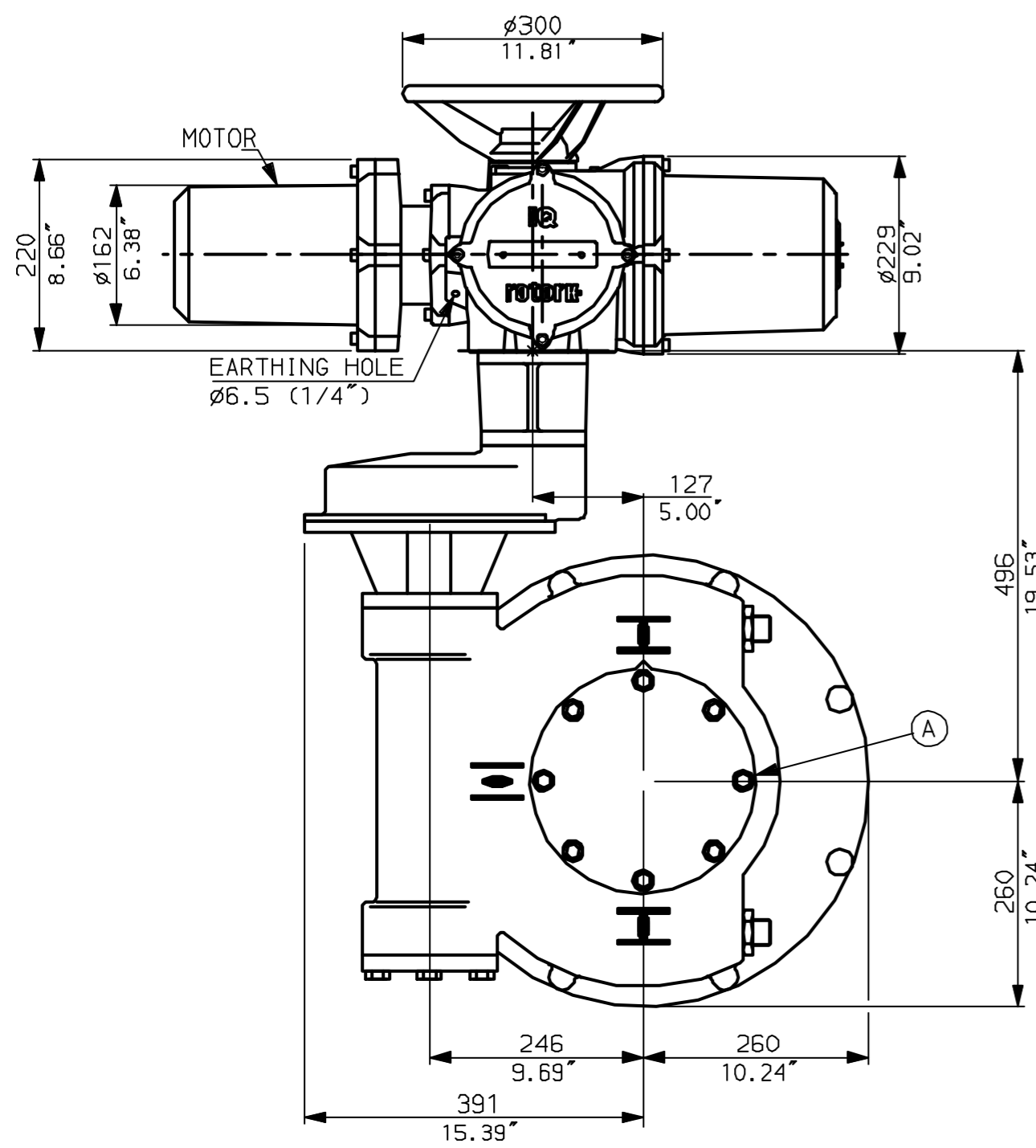


NOTES:
DIMENSIONS WITH '*' INDICATE
COVER REMOVAL ALLOWANCE
NETT WEIGHT = 255kg (561 lbs)
⊙ = OIL FILLER/DRAIN PLUG
THE INTERFACE PROVIDED FOR MOUNTING THE
ACTUATOR OR SECOND STAGE GEARBOX ONTO THE
VALVE SHOULD CONFORM TO GOOD ENGINEERING
PRACTICES, ENSURING ADEQUATELY TOLERANCED
LIMITS FOR PARALLELISM, PERPENDICULARITY
AND CONCENTRICITY.

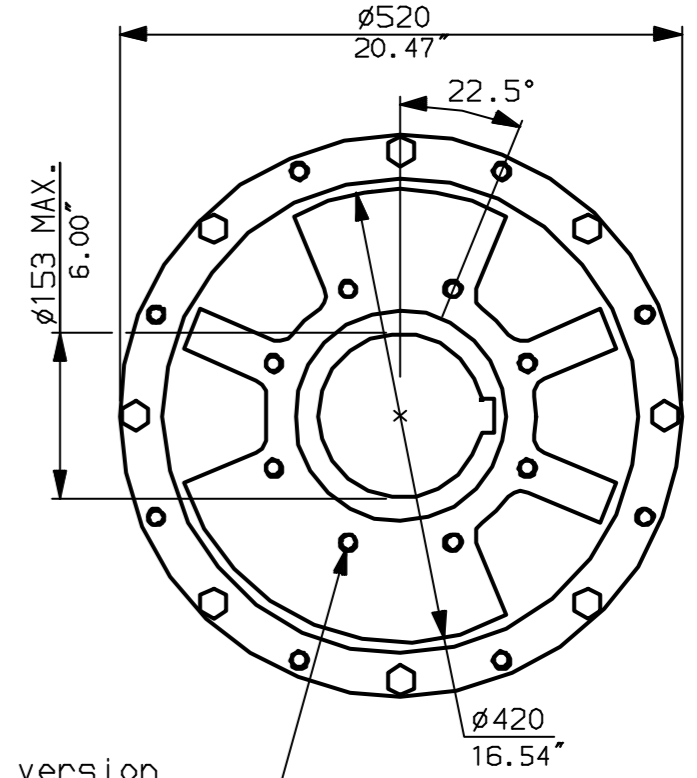
CONDUIT ENTRIES (N.T.S)



Nos.1 & 3 TAPPED 1" NPT
No.2 TAPPED 1 1/2" NPT
STD ALTERNATIVES IF SPECIFIED
2 X M25, 1 X M40
2 X PG16, 1 X PG29



N.B. KEYWAY POS. CAN BE MOVED
90 OR 180° BY REMOVING 8 SCREWS
MARKED (A) AND ROTATING OUTPUT
SLEEVE.



"F" version
8 HOLES TAPPED M16 x 30 DP
EQUI-SPACED AS SHOWN ON A
254 PCD (ISO 5211-F25).
"FA" version
8 HOLES TAPPED 5/8" UNC x 1.18" dp
EQUI-SPACED AS SHOWN ON A
10" PCD (MSS SP101-FA25).

NOTE:
Gearbox is shown with LOW Ratio Input Reducer.
(ie Ratios 120, 180, 240, 360)
See Data Sheet with IWBRh for HIGH ratio option.

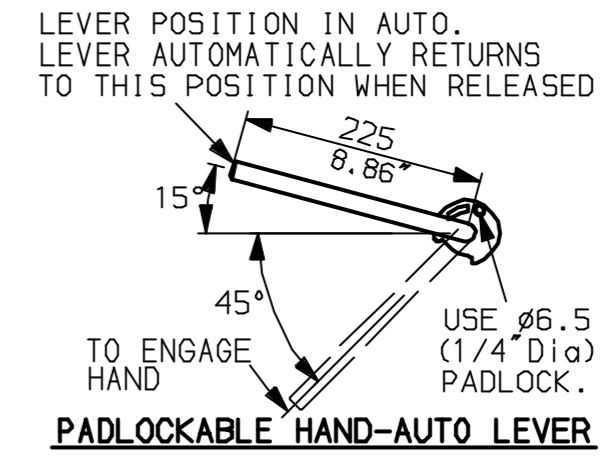
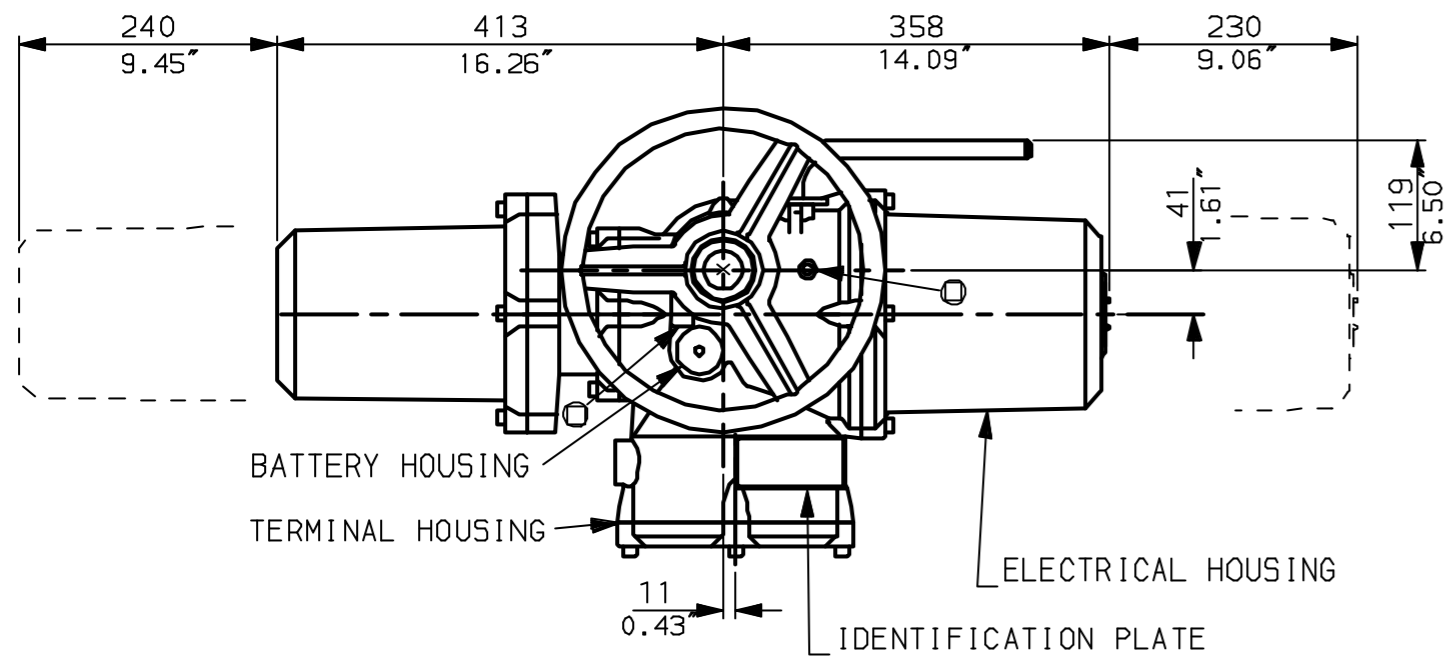
rotork
www.rotork.com

Rotork Controls Ltd.
Bath England, BA1 3JQ.
(Phone 01225-733200)

Rotork Controls Inc.
Rochester, NY 14624
(Phone 585-328-1550)

Title IQD10, 12, 18, THW, IW8 (+82+85)RL,		
STANDARD DIMENSIONAL DATA		
Drawn CAD	Checked PRE	Ref Data Sheet
Date April 04	Job No	IQD1THW_IWBR

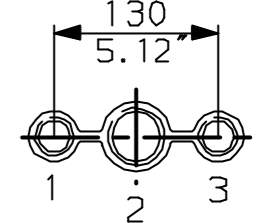
01	First Issue.
Scale	1:7 THIRD ANGLE PROJECTION
Drawing Number	IQD1THW_IWBR L



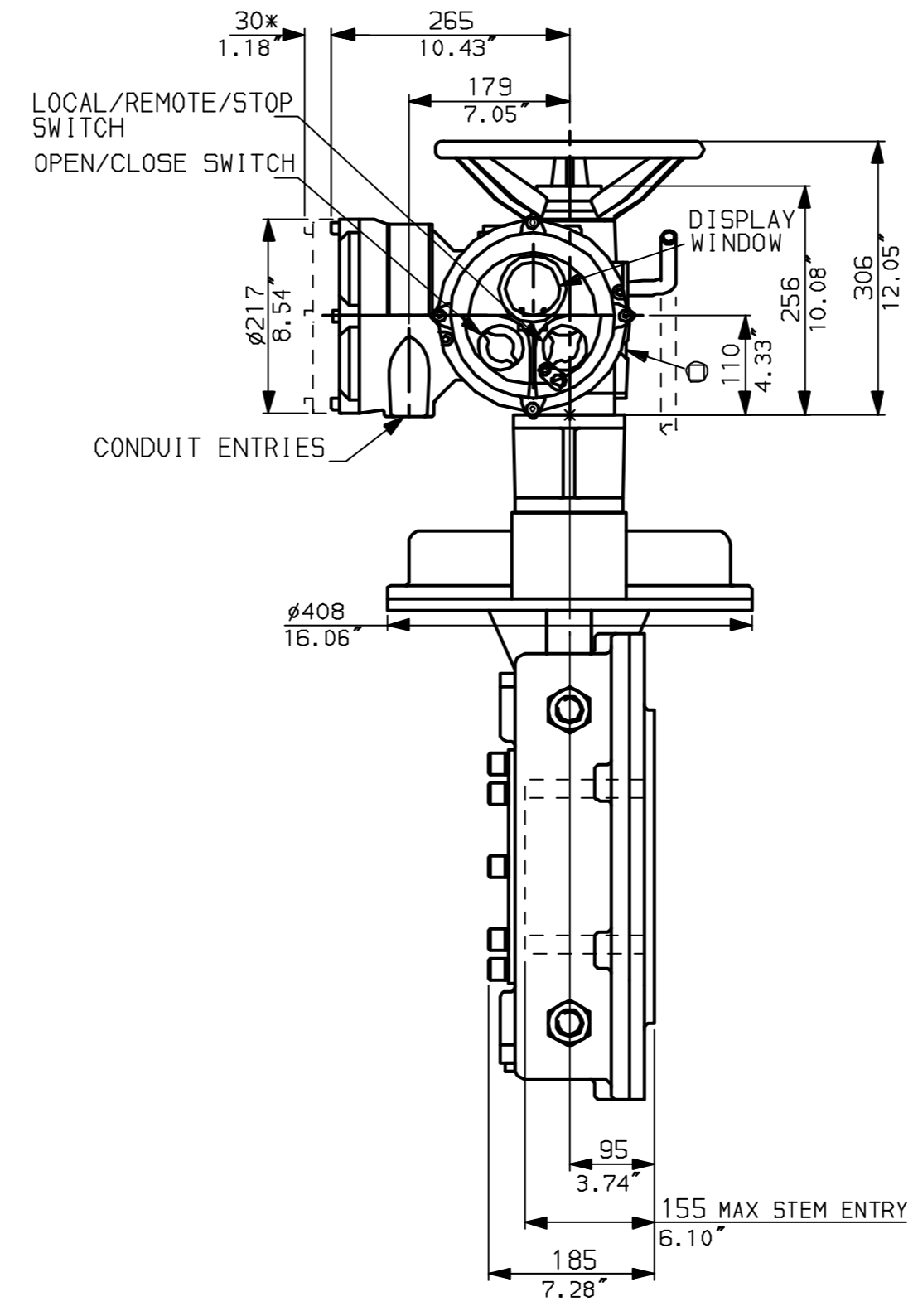
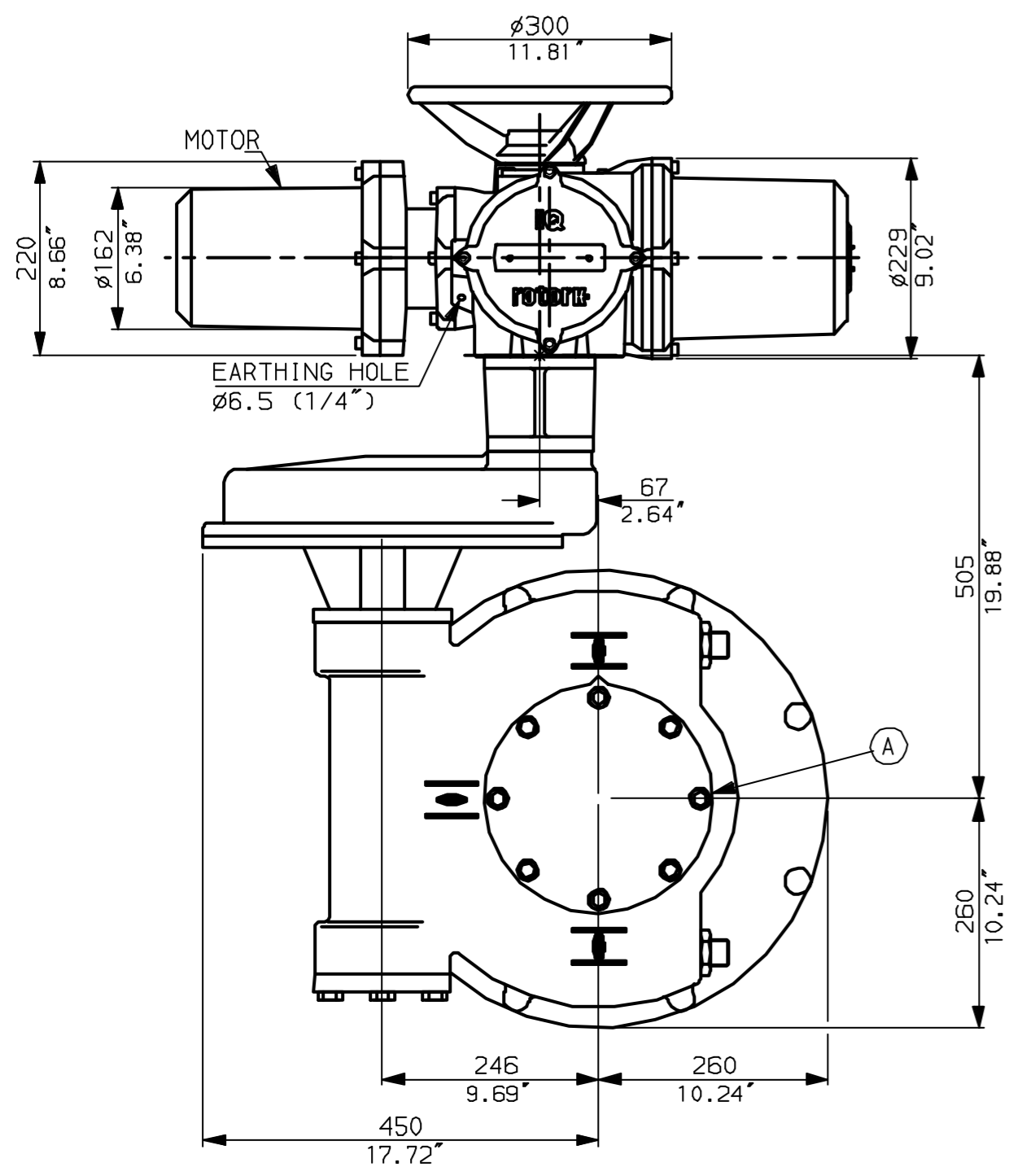
LEVER POSITION IN AUTO.
LEVER AUTOMATICALLY RETURNS TO THIS POSITION WHEN RELEASED

NOTES:
DIMENSIONS WITH '*' INDICATE COVER REMOVAL ALLOWANCE
NETT WEIGHT = 265kg (583lbs)
⊙ = OIL FILLER/DRAIN PLUG
THE INTERFACE PROVIDED FOR MOUNTING THE ACTUATOR OR SECOND STAGE GEARBOX ONTO THE VALVE SHOULD CONFORM TO GOOD ENGINEERING PRACTICES, ENSURING ADEQUATELY TOLERANCED LIMITS FOR PARALLELISM, PERPENDICULARITY AND CONCENTRICITY.

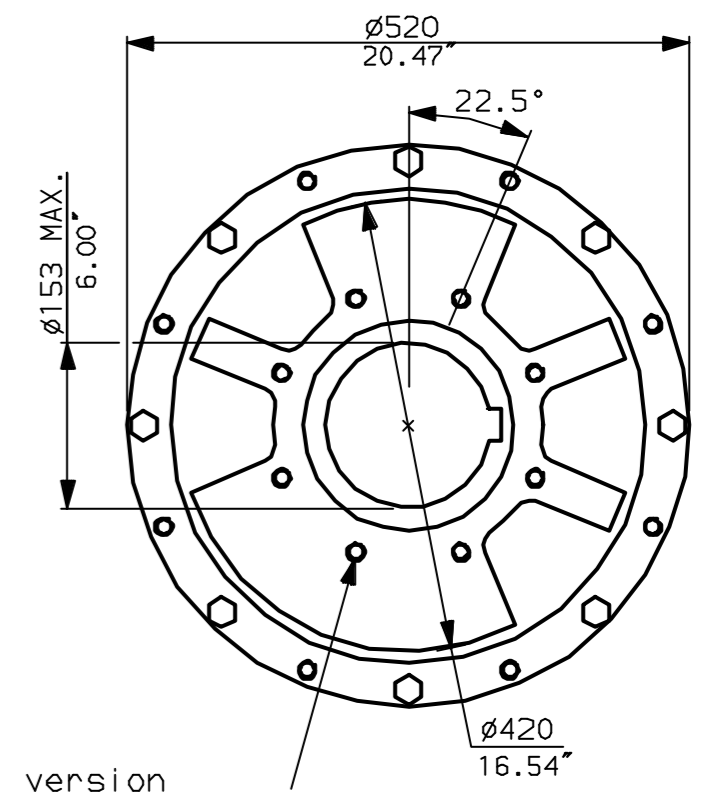
PADLOCKABLE HAND-AUTO LEVER **CONDUIT ENTRIES** (N.T.S)



Nos.1 & 3 TAPPED 1" NPT
No.2 TAPPED 1 1/2" NPT
STD ALTERNATIVES IF SPECIFIED
2 X M25, 1 X M40
2 X PG16, 1 X PG29



N.B. KEYWAY POS. CAN BE MOVED 90 OR 180° BY REMOVING 8 SCREWS MARKED (A) AND ROTATING OUTPUT SLEEVE.



"F" version
8 HOLES TAPPED M16 x 30 DP
EQUI-SPACED AS SHOWN ON A
254 PCD (150 5211-F25).

"FA" version
8 HOLES TAPPED 5/8" UNC x 1.18" dp
EQUI-SPACED AS SHOWN ON A
10" PCD (M55 SP101-FA25).

NOTE:
Gearbox is shown with HIGH Ratio Input Reducer.
(ie Ratios 480,540,720)
See Data Sheet with IW8RL for LOW ratio option.

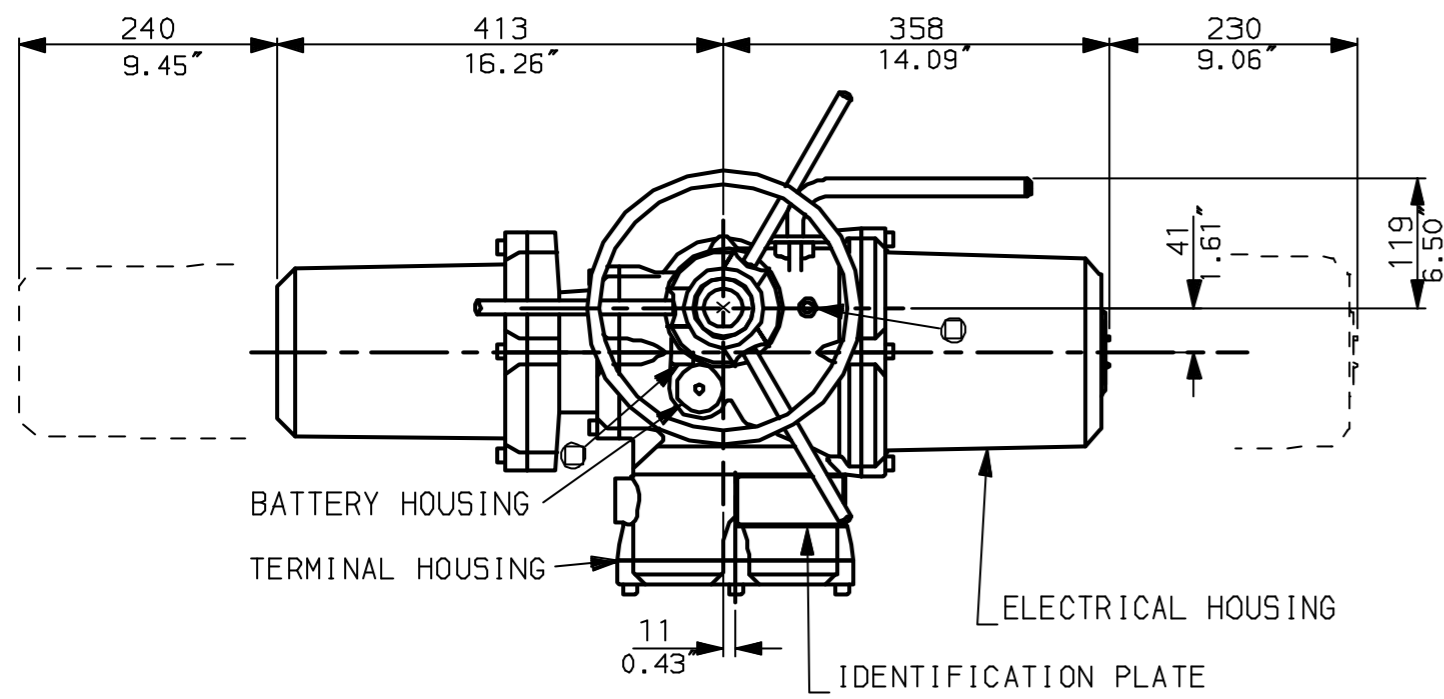
rotork
www.rotork.com

Rotork Controls Ltd.
Bath England, BA1 3JQ.
(Phone 01225-733200)

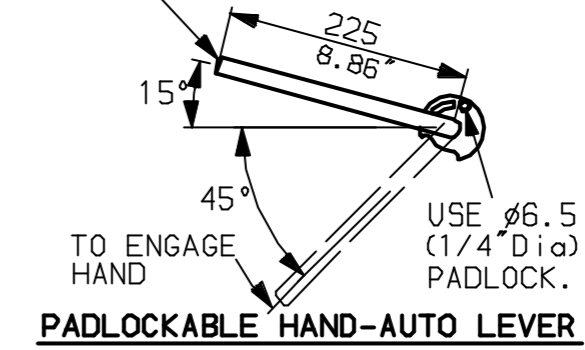
Rotork Controls Inc.
Rochester, NY 14624
(Phone 585-328-1550)

Title IQD10, 12, 18, THW, IW8 (+82+85)Rh,		
STANDARD DIMENSIONAL DATA		
Drawn CAD	Checked PRE	Ref Data Sheet
Date April 04	Job No	IQD1THW_IW8Rh

01	First Issue.
Scale	1:7 THIRD ANGLE PROJECTION
Drawing Number	IQD1THW_IW8Rh

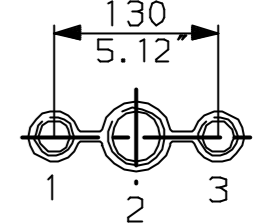


LEVER POSITION IN AUTO.
LEVER AUTOMATICALLY RETURNS
TO THIS POSITION WHEN RELEASED

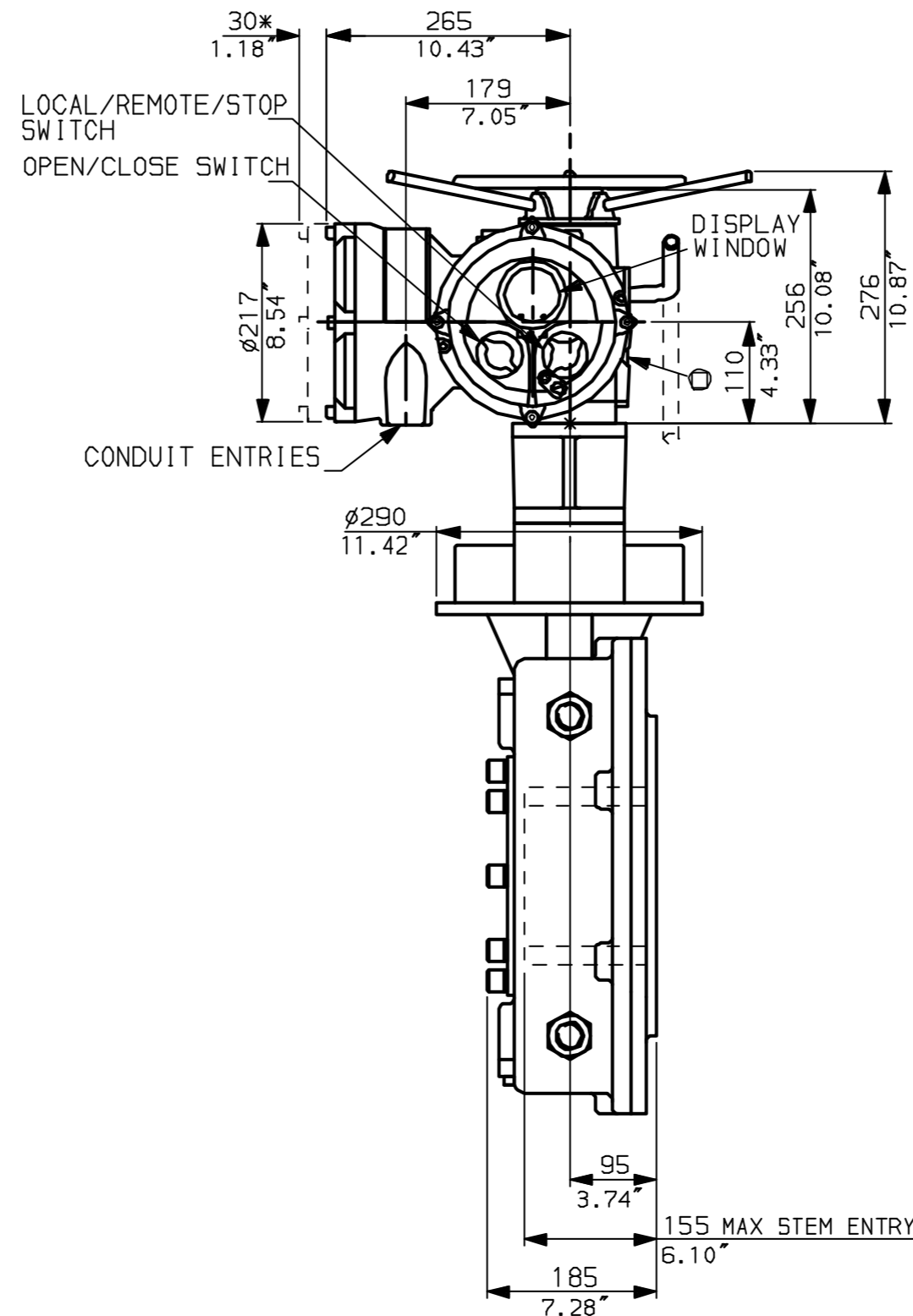
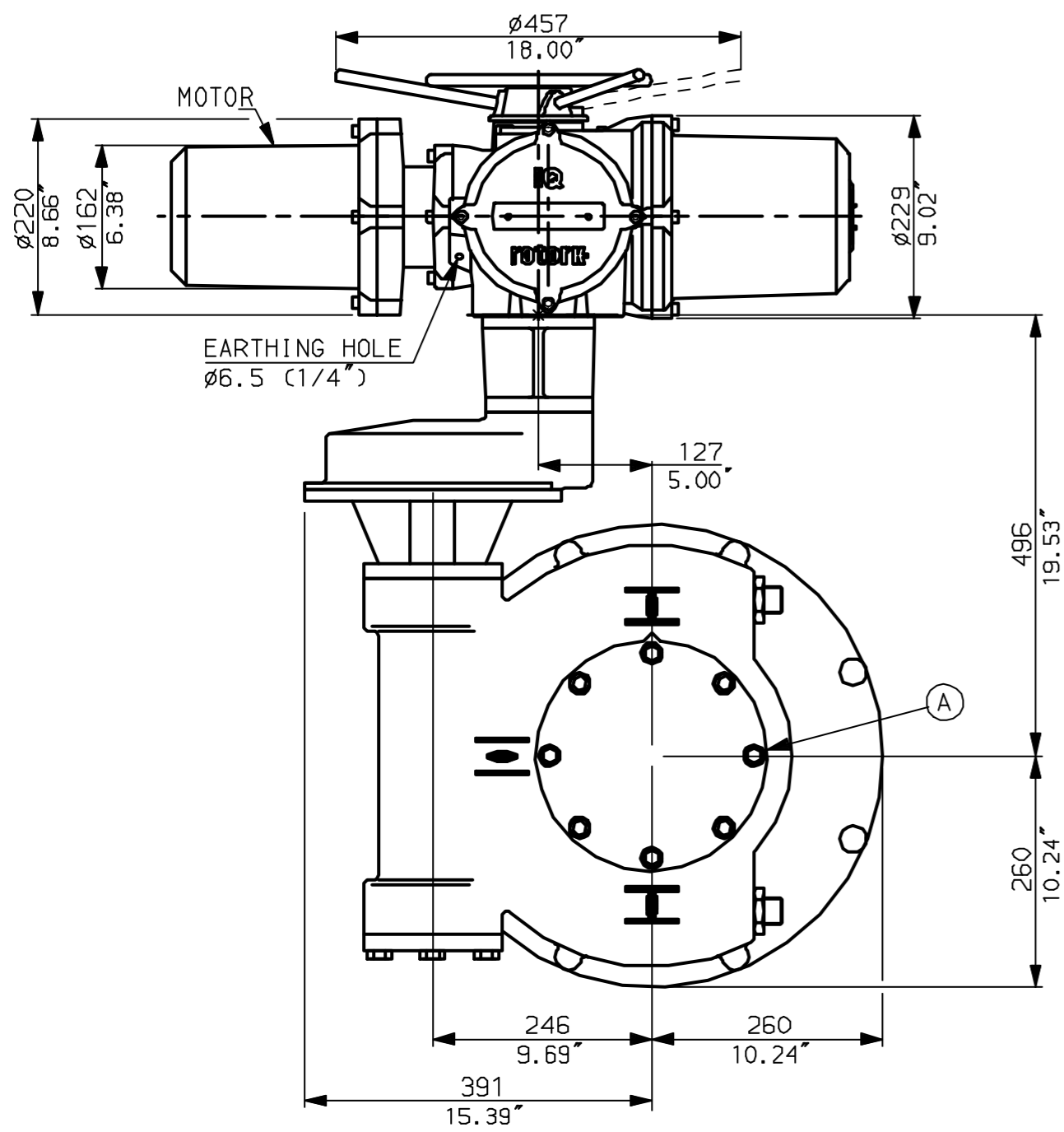


NOTES:
DIMENSIONS WITH '*' INDICATE COVER REMOVAL ALLOWANCE
NETT WEIGHT = 255kg (561 lbs)
OIL FILLER/DRAIN PLUG
THE INTERFACE PROVIDED FOR MOUNTING THE ACTUATOR OR SECOND STAGE GEARBOX ONTO THE VALVE SHOULD CONFORM TO GOOD ENGINEERING PRACTICES, ENSURING ADEQUATELY TOLERANCED LIMITS FOR PARALLELISM, PERPENDICULARITY AND CONCENTRICITY.

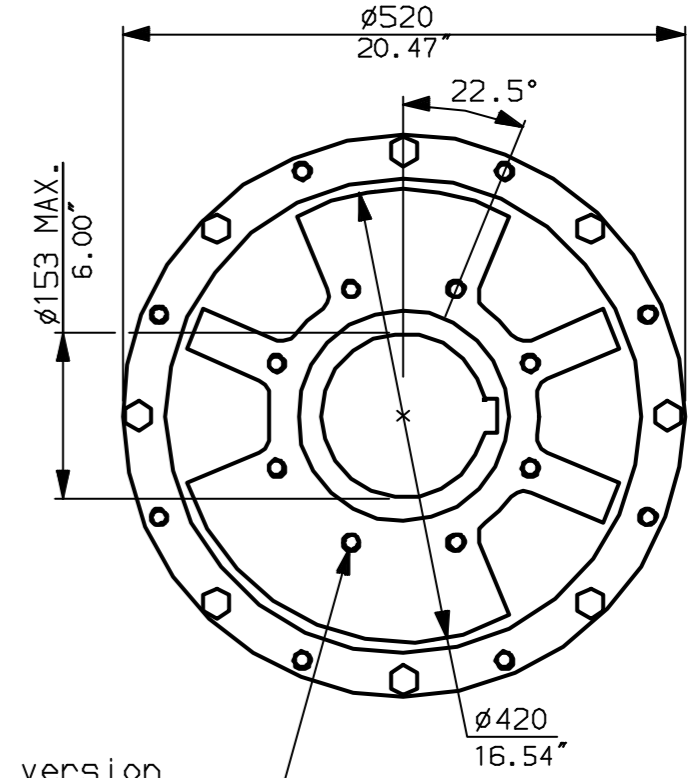
CONDUIT ENTRIES (N.T.S)



Nos.1 & 3 TAPPED 1" NPT
No.2 TAPPED 1 1/2" NPT
STD ALTERNATIVES IF SPECIFIED
2 X M25, 1 X M40
2 X PG16, 1 X PG29



N.B. KEYWAY POS. CAN BE MOVED 90 OR 180° BY REMOVING 8 SCREWS MARKED (A) AND ROTATING OUTPUT SLEEVE.



"F" version
8 HOLES TAPPED M16 x 30 DP
EQUI-SPACED AS SHOWN ON A
254 PCD (ISO 5211-F25).
"FA" version
8 HOLES TAPPED 5/8" UNC x 1.18" dp
EQUI-SPACED AS SHOWN ON A
10" PCD (MSS SP101-FA25).

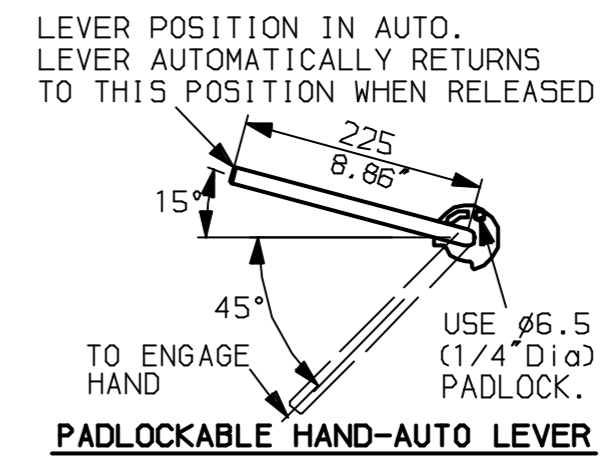
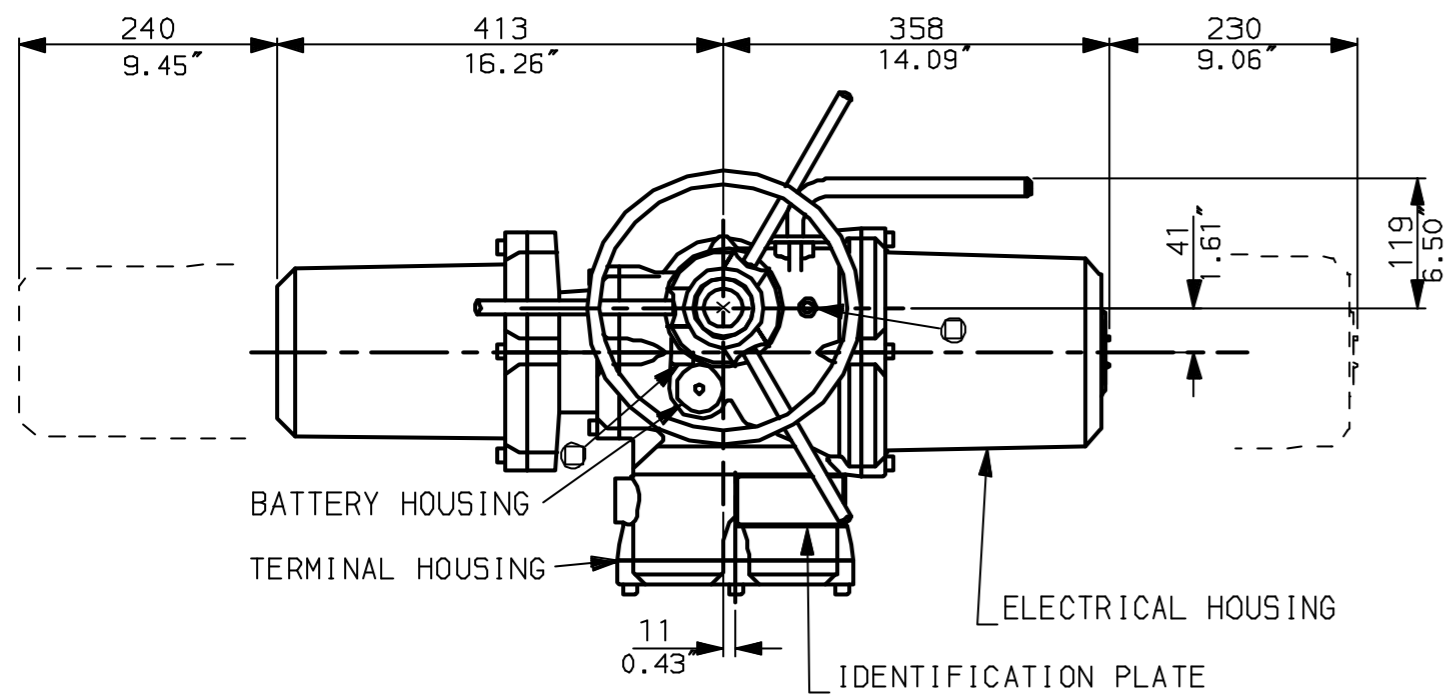
NOTE:
Gearbox is shown with LOW Ratio Input Reducer.
(ie Ratios 120, 180, 240, 360)
See Data Sheet with IWRh for HIGH ratio option.



Rotork Controls Ltd.
Bath England, BA1 3JQ.
(Phone 01225-733200)
Rotork Controls Inc.
Rochester, NY 14624
(Phone 585-328-1550)

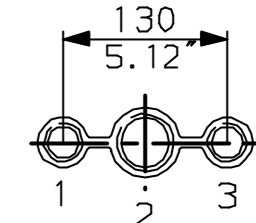
Title IQD10, 12, 18, LTHW, IWB (+82+85) RL,		
STANDARD DIMENSIONAL DATA		
Drawn CAD	Checked PRE	Ref Data Sheet
Date April 04	Job No	IQD1LTHW_IWBRL

01	First Issue.
Scale	1:7 THIRD ANGLE PROJECTION
Drawing Number	IQD1LTHW_IWBRL

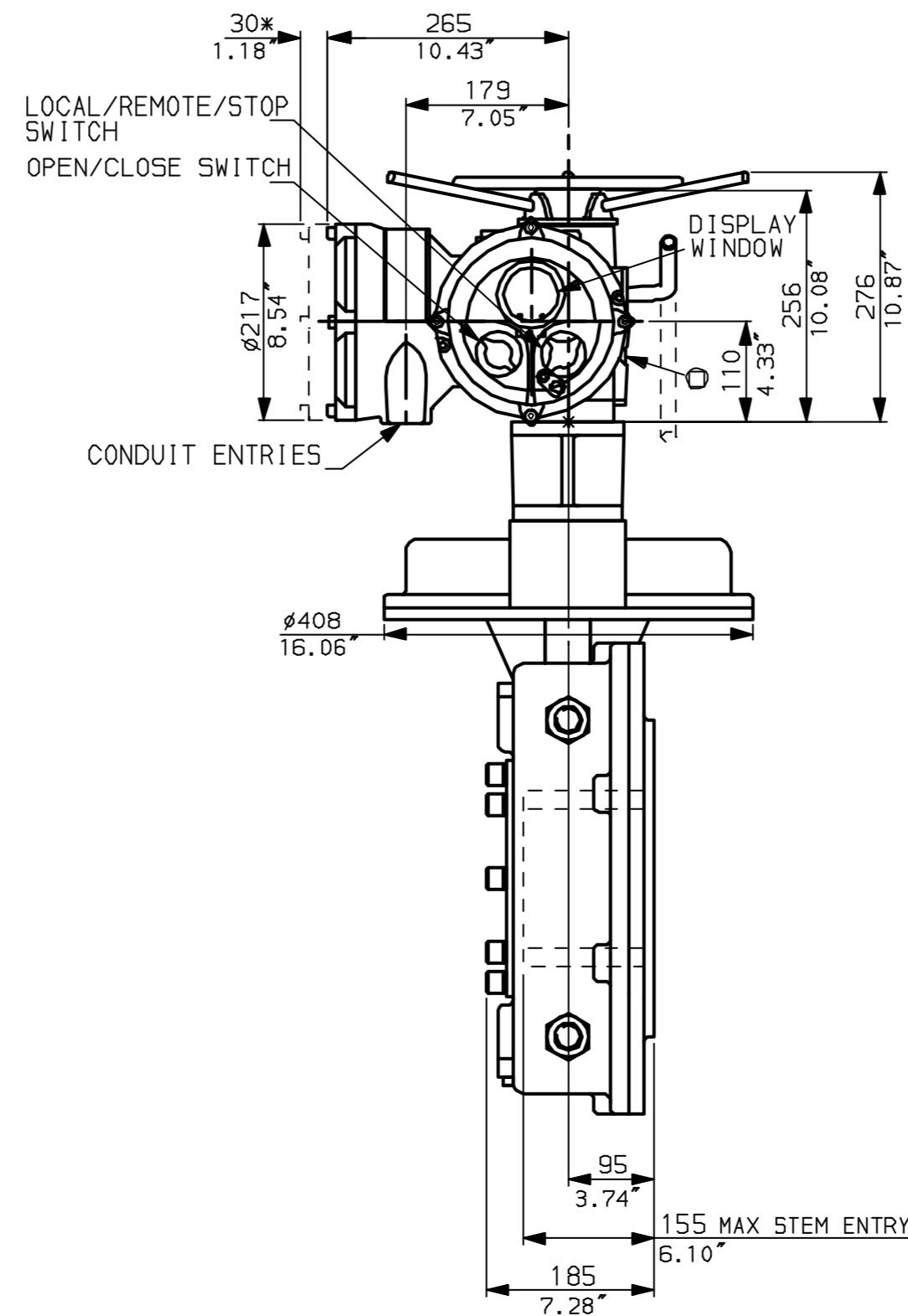
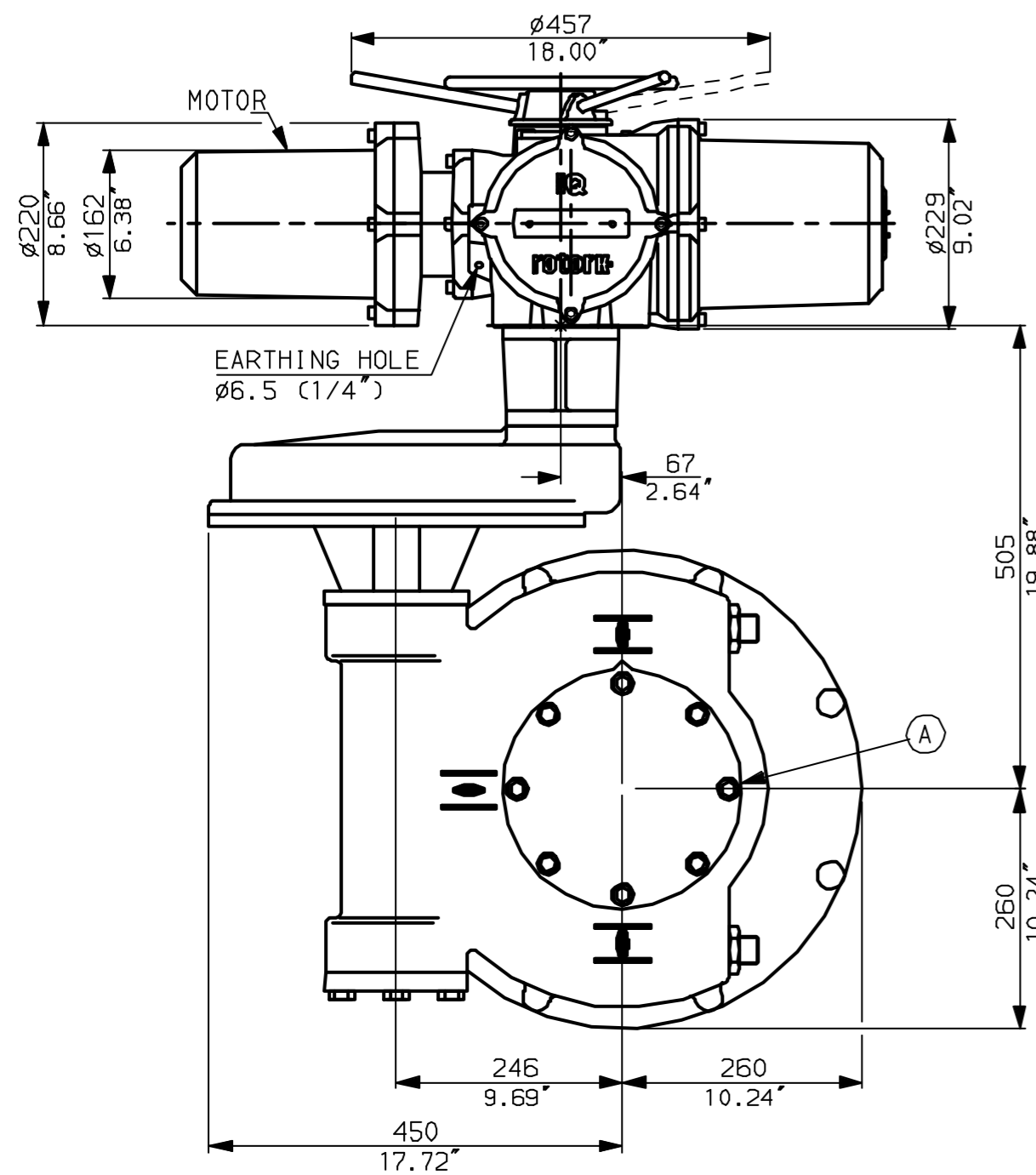


NOTES:
 * DIMENSIONS WITH '*' INDICATE COVER REMOVAL ALLOWANCE
 : NETT WEIGHT = 265kg (583lbs)
 : ϕ = OIL FILLER/DRAIN PLUG
 : THE INTERFACE PROVIDED FOR MOUNTING THE ACTUATOR OR SECOND STAGE GEARBOX ONTO THE VALVE SHOULD CONFORM TO GOOD ENGINEERING PRACTICES, ENSURING ADEQUATELY TOLERANCED LIMITS FOR PARALLELISM, PERPENDICULARITY AND CONCENTRICITY.

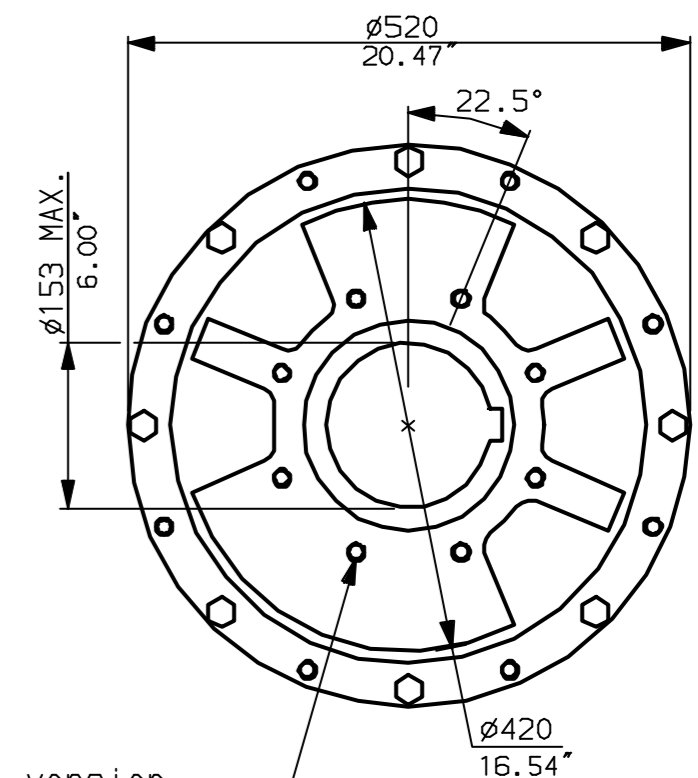
CONDUIT ENTRIES (N.T.S)



Nos.1 & 3 TAPPED 1" NPT
 No.2 TAPPED 1 1/2" NPT
 STD ALTERNATIVES IF SPECIFIED
 2 X M25, 1 X M40
 2 X PG16, 1 X PG29



N.B. KEYWAY POS. CAN BE MOVED 90 OR 180° BY REMOVING 8 SCREWS MARKED (A) AND ROTATING OUTPUT SLEEVE.



"F" version
 8 HOLES TAPPED M16 x 30 DP
 EQUI-SPACED AS SHOWN ON A
 254 PCD (ISO 5211-F25).

"FA" version
 8 HOLES TAPPED 5/8" UNC x 1.18" dp
 EQUI-SPACED AS SHOWN ON A
 10" PCD (MSS SP101-FA25).

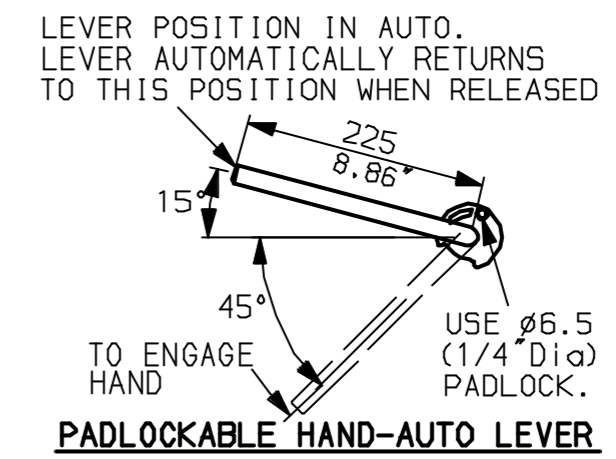
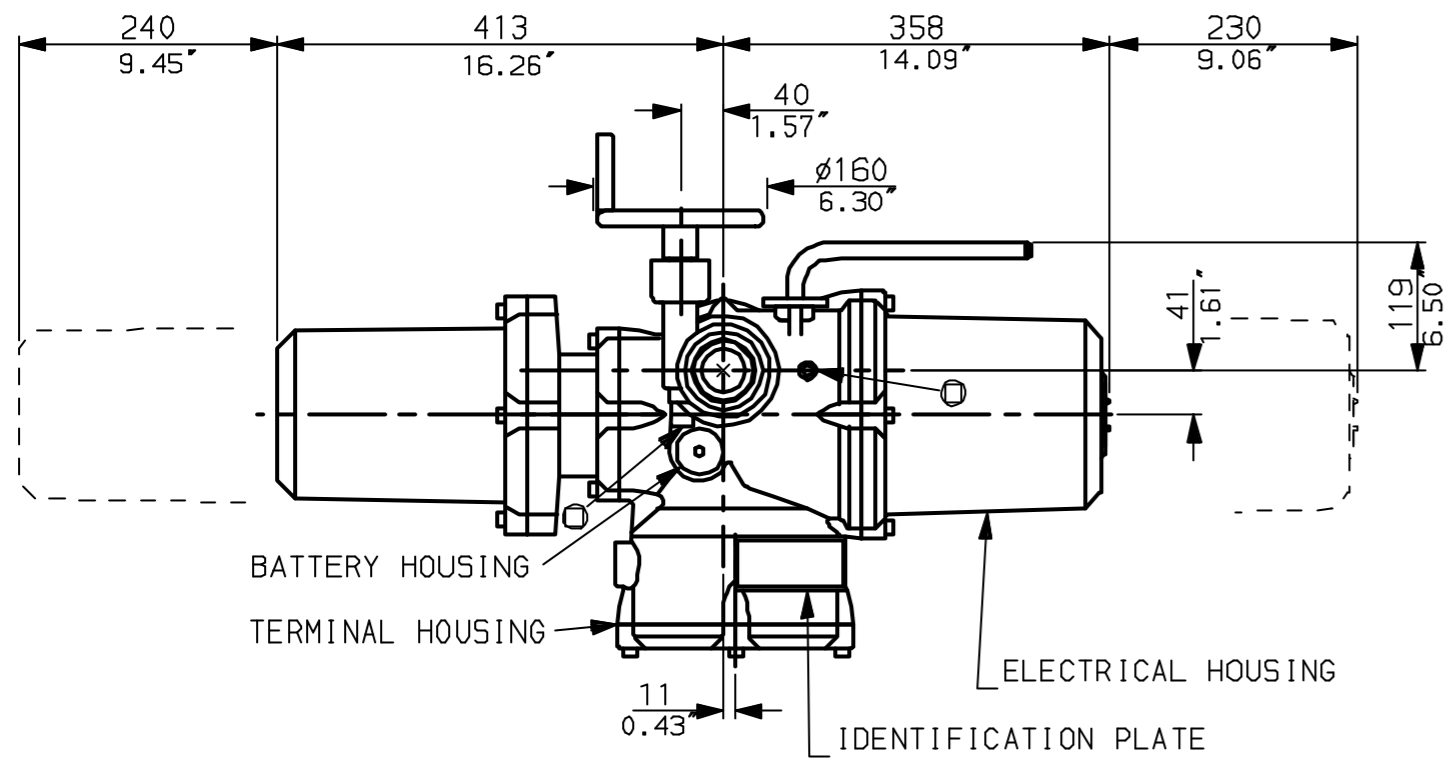
NOTE:
 Gearbox is shown with HIGH Ratio Input Reducer.
 (ie Ratios 480,540,720)
 See Data Sheet with IWBRL for LOW ratio option.

rotork
 www.rotork.com

Rotork Controls Ltd.
 Bath England, BA1 3JQ.
 (Phone 01225-733200)
 Rotork Controls Inc.
 Rochester, NY 14624
 (Phone 585-328-1550)

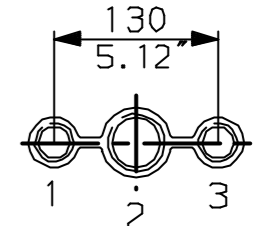
Title IQD10, 12, 18, LTHW, IW8 (+82+85)Rh,		
STANDARD DIMENSIONAL DATA		
Drawn CAD	Checked PRE	Ref Data Sheet
Date April 04	Job No	IQD1LTHW_IWBRLh

01	First Issue.
Scale	1:7 THIRD ANGLE PROJECTION
Drawing Number	IQD1LTHW_IWBRLh

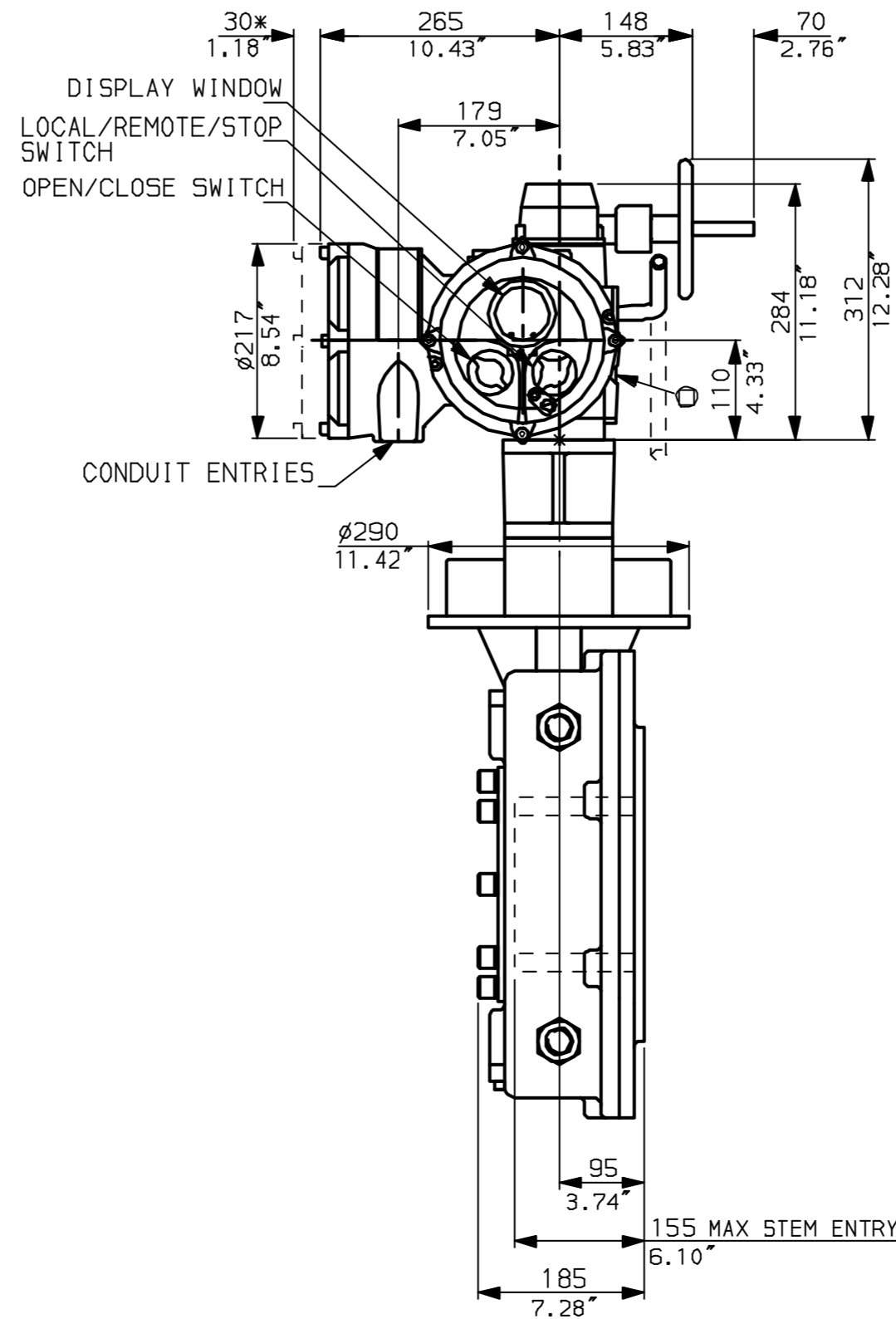
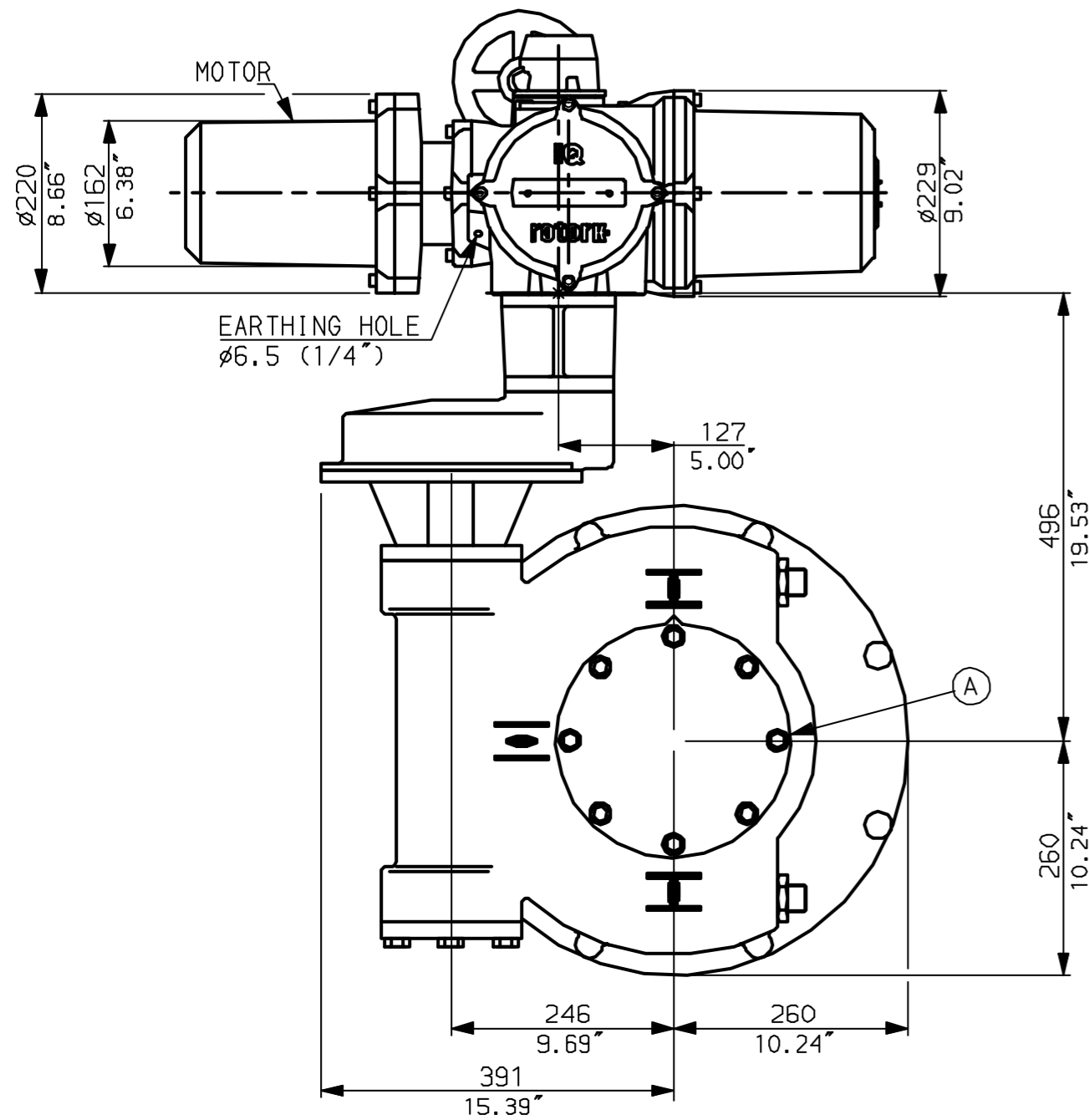


NOTES:
 DIMENSIONS WITH '' INDICATE COVER REMOVAL ALLOWANCE
 :NETT WEIGHT = 255kg (561 lbs)
 : ϕ = OIL FILLER/DRAIN PLUG
 :THE INTERFACE PROVIDED FOR MOUNTING THE ACTUATOR OR SECOND STAGE GEARBOX ONTO THE VALVE SHOULD CONFORM TO GOOD ENGINEERING PRACTICES, ENSURING ADEQUATELY TOLERANCED LIMITS FOR PARALLELISM, PERPENDICULARITY AND CONCENTRICITY.

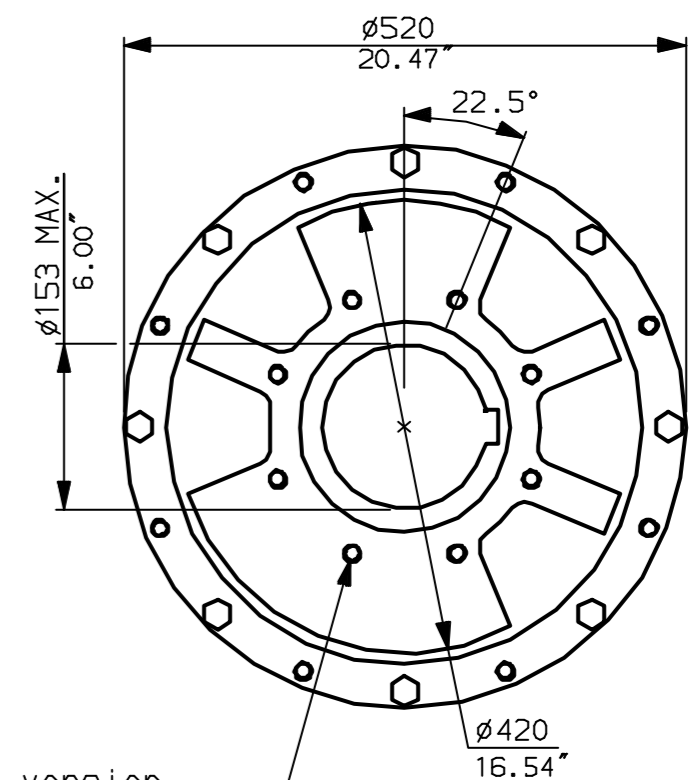
CONDUIT ENTRIES (N.T.S)



Nos.1 & 3 TAPPED 1" NPT
 No.2 TAPPED 1 1/2" NPT
 STD ALTERNATIVES IF SPECIFIED
 2 X M25, 1 X M40
 2 X PG16, 1 X PG29



N.B. KEYWAY POS. CAN BE MOVED 90 OR 180° BY REMOVING 8 SCREWS MARKED (A) AND ROTATING OUTPUT SLEEVE.



"F" version
 8 HOLES TAPPED M16 x 30 DP
 EQUI-SPACED AS SHOWN ON A
 254 PCD (ISO 5211-F25).

"FA" version
 8 HOLES TAPPED 5/8" UNC x 1.18" dp
 EQUI-SPACED AS SHOWN ON A
 10" PCD (MSS SP101-FA25).

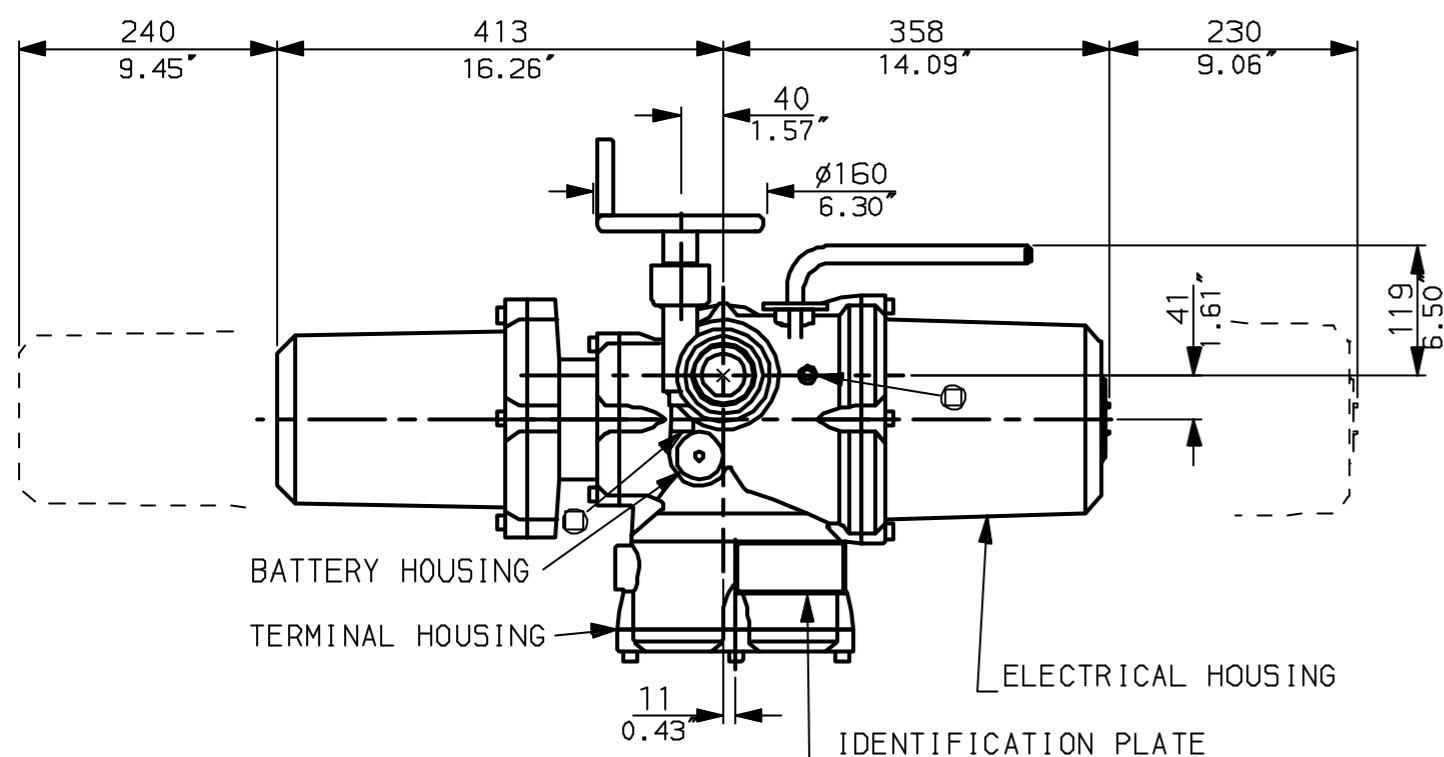
NOTE:
 Gearbox is shown with LOW Ratio Input Reducer.
 (ie Ratios 120, 180, 240, 360)
 See Data Sheet with IWBRL for HIGH ratio option.

rotork
 www.rotork.com

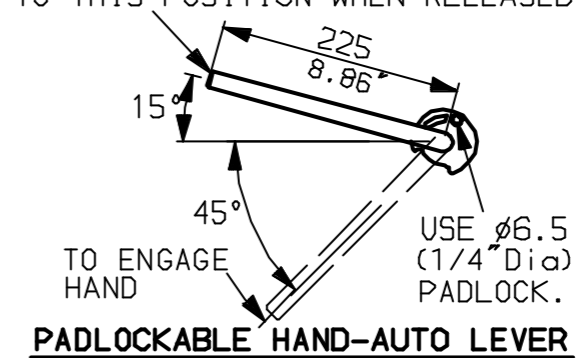
Rotork Controls Ltd.
 Bath England, BA1 3JQ.
 (Phone 01225-733200)
 Rotork Controls Inc.
 Rochester, NY 14624
 (Phone 585-328-1550)

Title IQD10, 12, 18, SHW, IW8 (+82+85)RL,		
STANDARD DIMENSIONAL DATA		
Drawn CAD	Checked PRE	Ref Data Sheet
Date April 04	Job No	IQD1SHW_IWBRL

01	First Issue.
Scale	1:7 THIRD ANGLE PROJECTION
Drawing Number	IQD1SHW_IWBRL

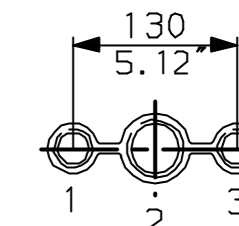


LEVER POSITION IN AUTO.
LEVER AUTOMATICALLY RETURNS
TO THIS POSITION WHEN RELEASED



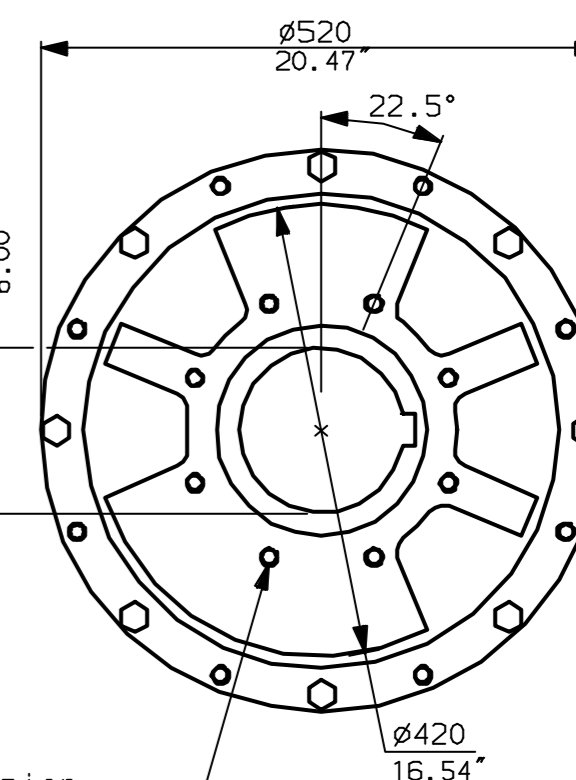
NOTES:
DIMENSIONS WITH '*' INDICATE
COVER REMOVAL ALLOWANCE
NETT WEIGHT = 265kg (583lbs)
OIL FILLER/DRAIN PLUG
THE INTERFACE PROVIDED FOR MOUNTING THE
ACTUATOR OR SECOND STAGE GEARBOX ONTO THE
VALVE SHOULD CONFORM TO GOOD ENGINEERING
PRACTICES, ENSURING ADEQUATELY TOLERANCED
LIMITS FOR PARALLELISM, PERPENDICULARITY
AND CONCENTRICITY.

CONDUIT ENTRIES (N.T.S)



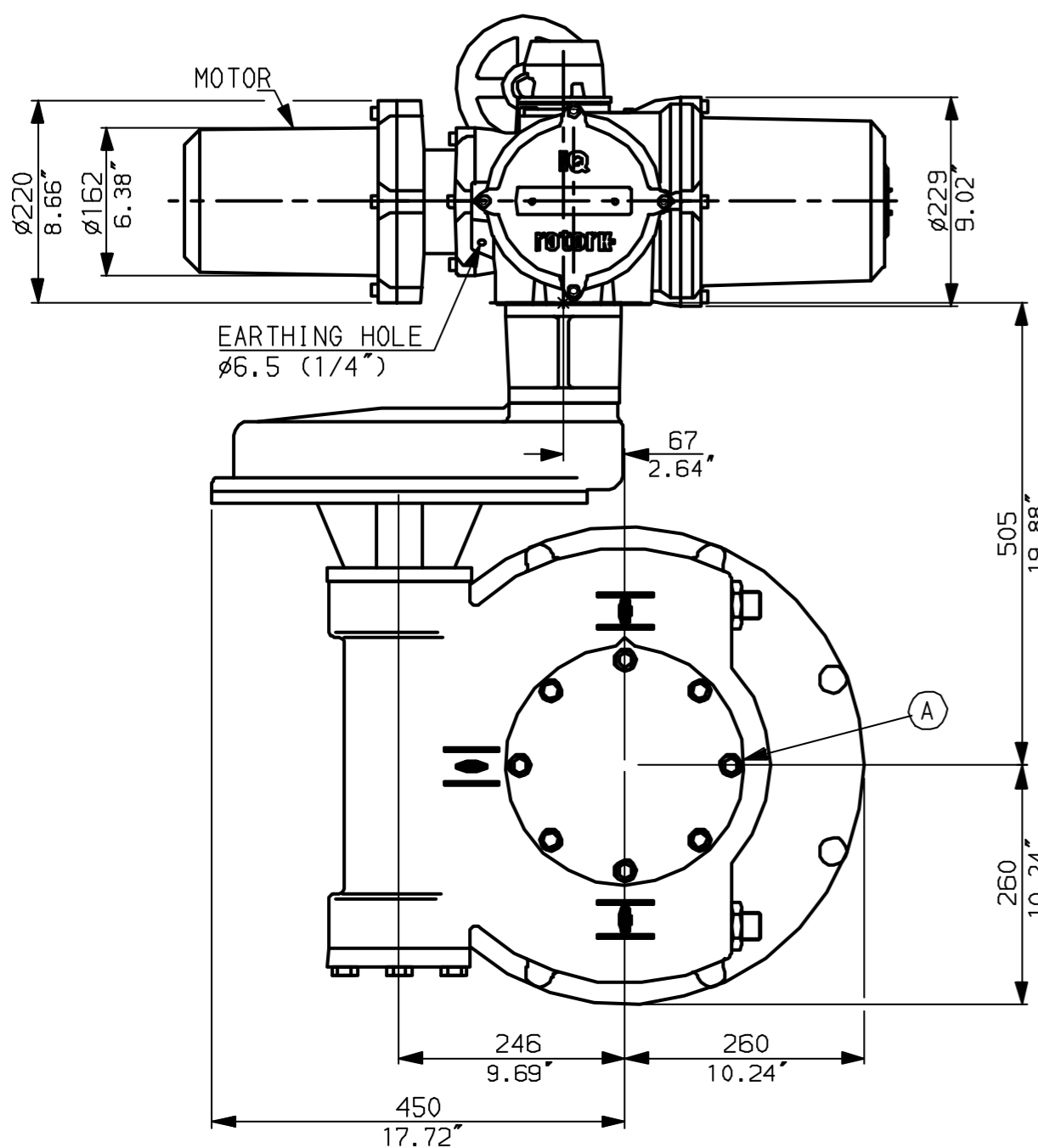
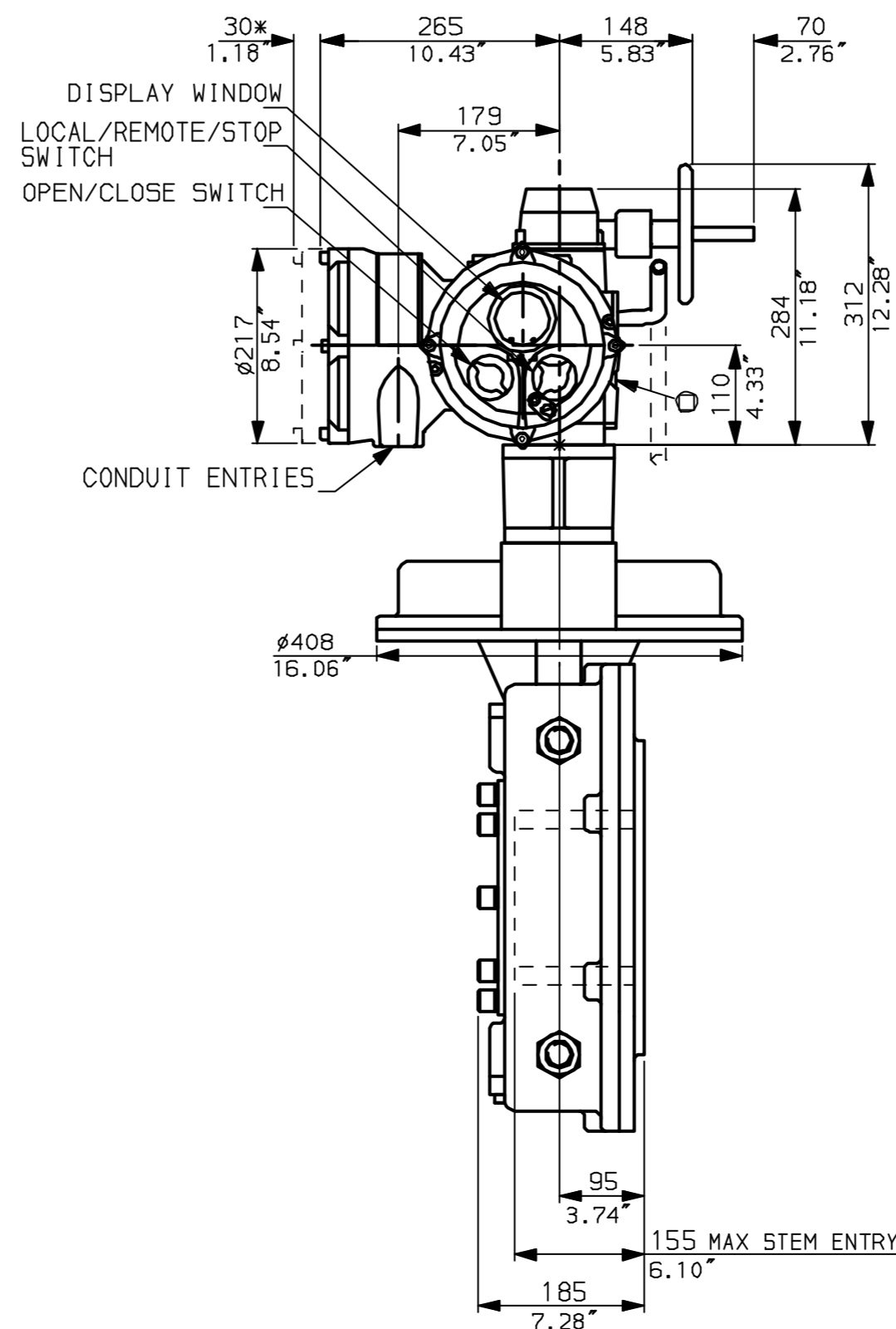
Nos.1 & 3 TAPPED 1" NPT
No.2 TAPPED 1 1/2" NPT
STD ALTERNATIVES IF SPECIFIED
2 X M25, 1 X M40
2 X PG16, 1 X PG29

N.B. KEYWAY POS. CAN BE MOVED
90 OR 180° BY REMOVING 8 SCREWS
MARKED (A) AND ROTATING OUTPUT
SLEEVE.



"F" version
8 HOLES TAPPED M16 x 30 DP
EQUI-SPACED AS SHOWN ON A
254 PCD (ISO 5211-F25).

"FA" version
8 HOLES TAPPED 5/8" UNC x 1.18" dp
EQUI-SPACED AS SHOWN ON A
10" PCD (MSS SP101-FA25).



NOTE:
Gearbox is shown with HIGH Ratio Input Reducer.
(ie Ratios 480,540,720)
See Data Sheet with IW8RL for LOW ratio option.

 www.rotork.com	Rotork Controls Ltd. Bath England, BA1 3JQ. (Phone 01225-733200)	Title IQD10, 12, 18, SHW, IW8 (+82+85)Rh, STANDARD DIMENSIONAL DATA
	Rotork Controls Inc. Rochester, NY 14624 (Phone 585-328-1550)	Drawn CAD Checked PRE Ref Data Sheet
	Date April 04 Job No IQD1SHW_IW8Rh	

01	First Issue.
Scale	1:7 THIRD ANGLE PROJECTION
Drawing Number	IQD1SHW_IW8Rh