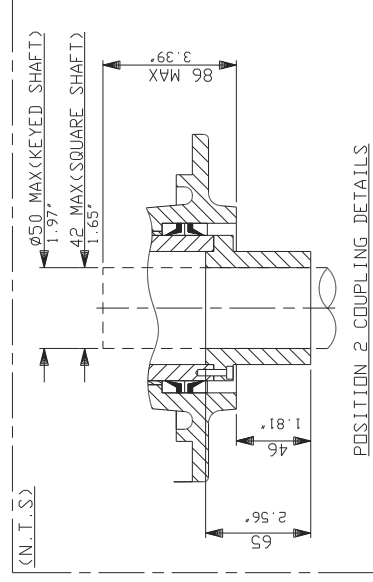
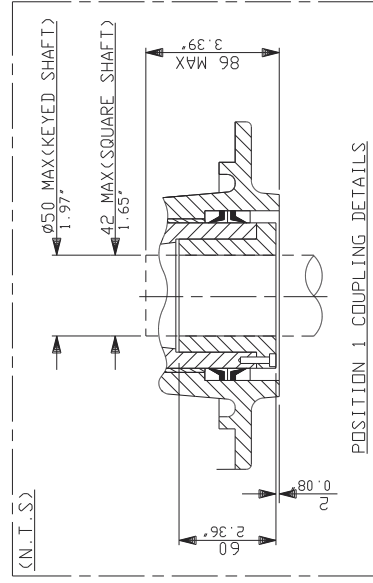
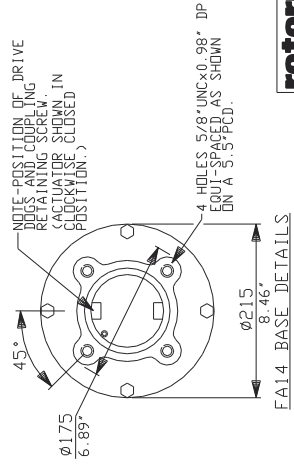
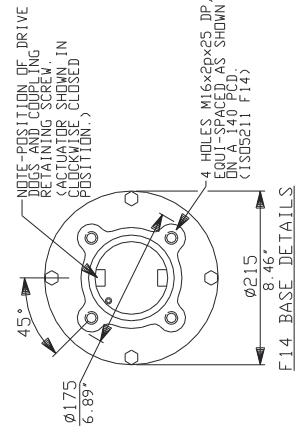
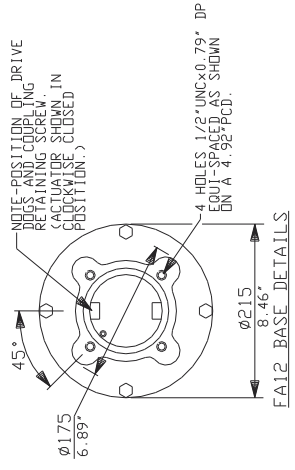
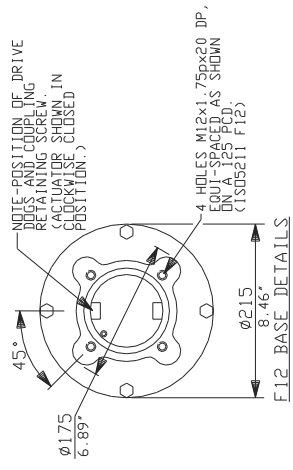
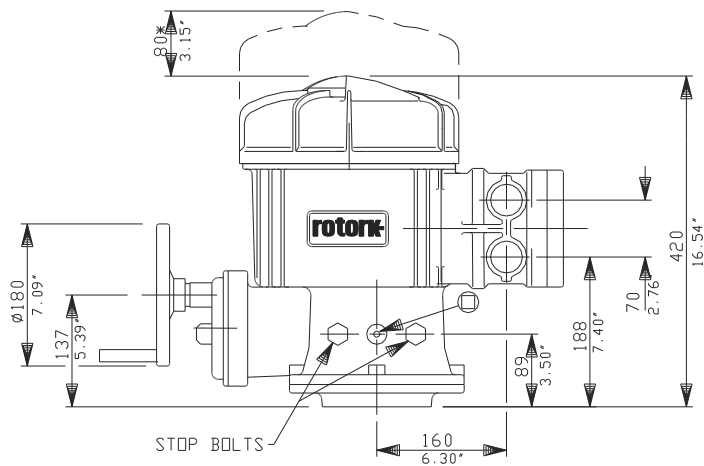
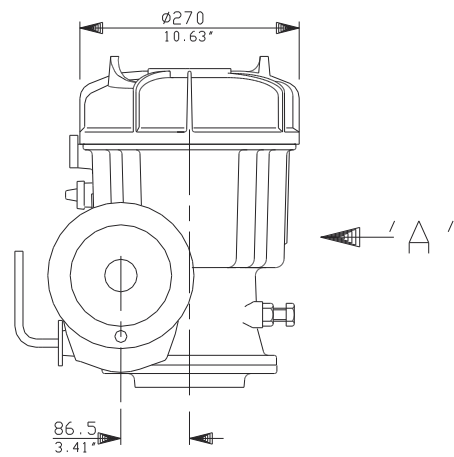
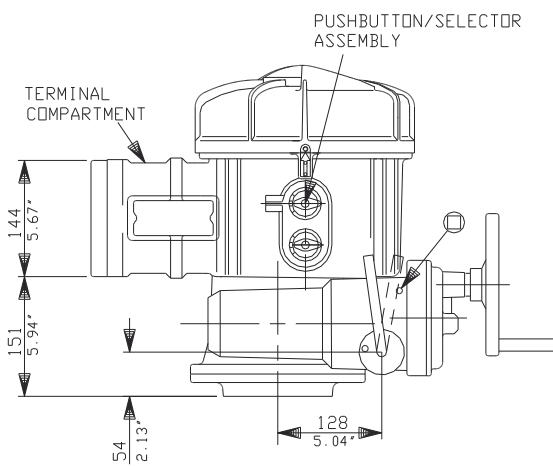
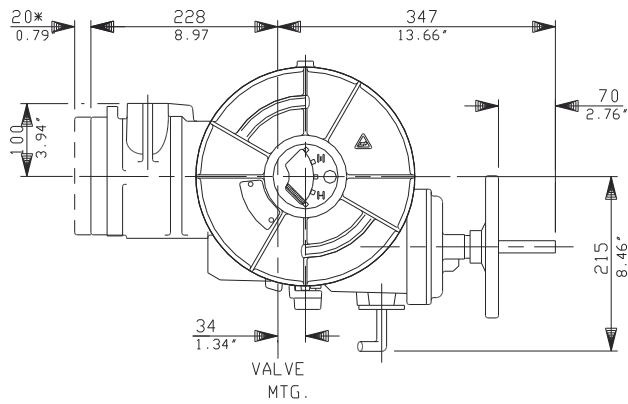


F12 BASE
OPTIONAL ON AQ800



F14 BASE
STANDARD FOR AQ800



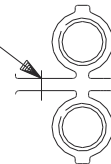


VIEW ON ARROW 'A'

ACTUATOR SHOWN WITH F14 BASE.

CONDUIT ENTRIES (N.T.S)

EARTHING HOLE
Ø5.5 (7/32")



TAPPED 2 X 1 1/4" NPT
STANDARD ALTERNATIVES IF SPECIFIED
2 X M32
2 X PG21

rotork

Rotork Controls Ltd.
Bath, England BA1 3JD
Bath (01225)733200

AQ800 DATA

Date 141097

AQ2D