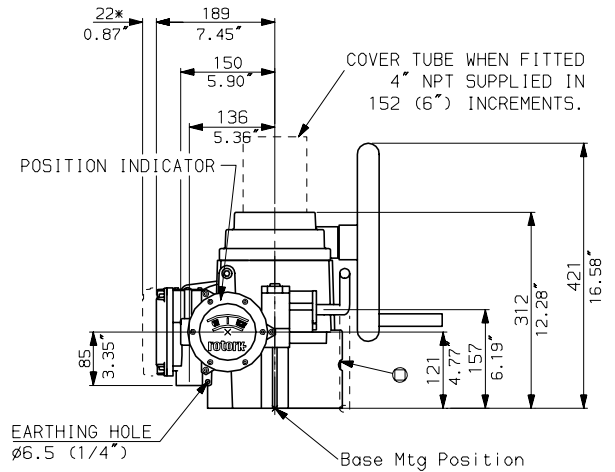
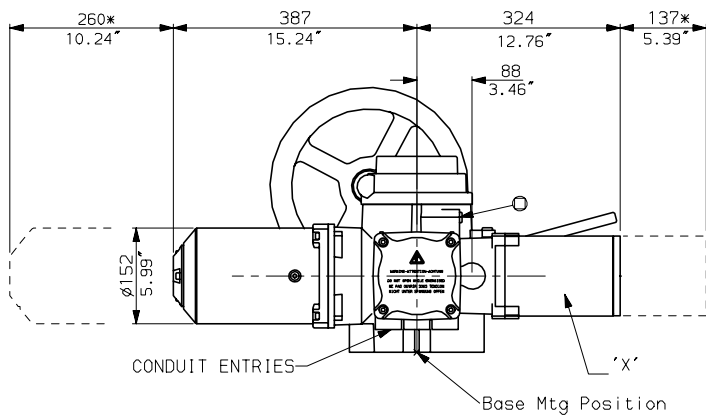
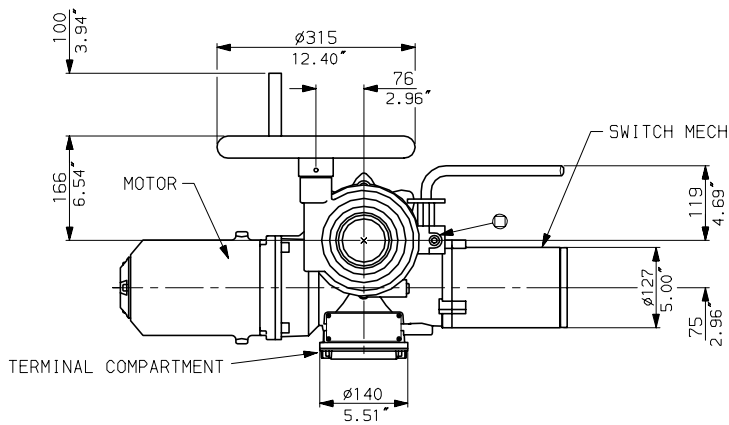
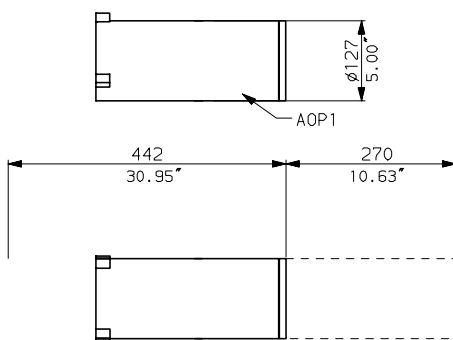


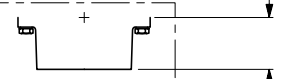
35A WITH SIDE HANDWHEEL SYNCROSET



ADD-ON-PAK 1
REPLACES 'X' &
SWITCH MECH IF REQUIRED.



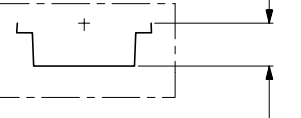
F16 B1 and FA16 B1 Bases
(Non-Thrust)



F16 B3/B4 and FA16 B3/4
Bases (Non-Thrust)



F16 A, FA16 A, F16 Z and
and FA16 Z Bases (Thrust)

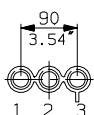


NOTES

Three BASE options are detailed to suit the relevant Coupling arrangement.

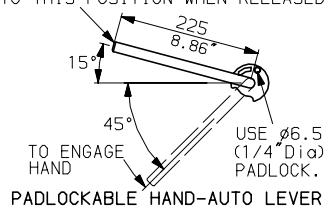
The required BASE for the SIDE & END views should be loaded to position indicated.

CONDUIT ENTRIES



3 ENTRIES M32
STANDARD ALTERNATIVES IF SPECIFIED
M25, M20, PG21, PG16, 1" NPT & 3/4" NPT.

LEVER POSITION IN AUTO.
LEVER AUTOMATICALLY RETURNS
TO THIS POSITION WHEN RELEASED



www.rotork.com

AWT 35A SET (SHW)

Date 010203

Scale 1:12