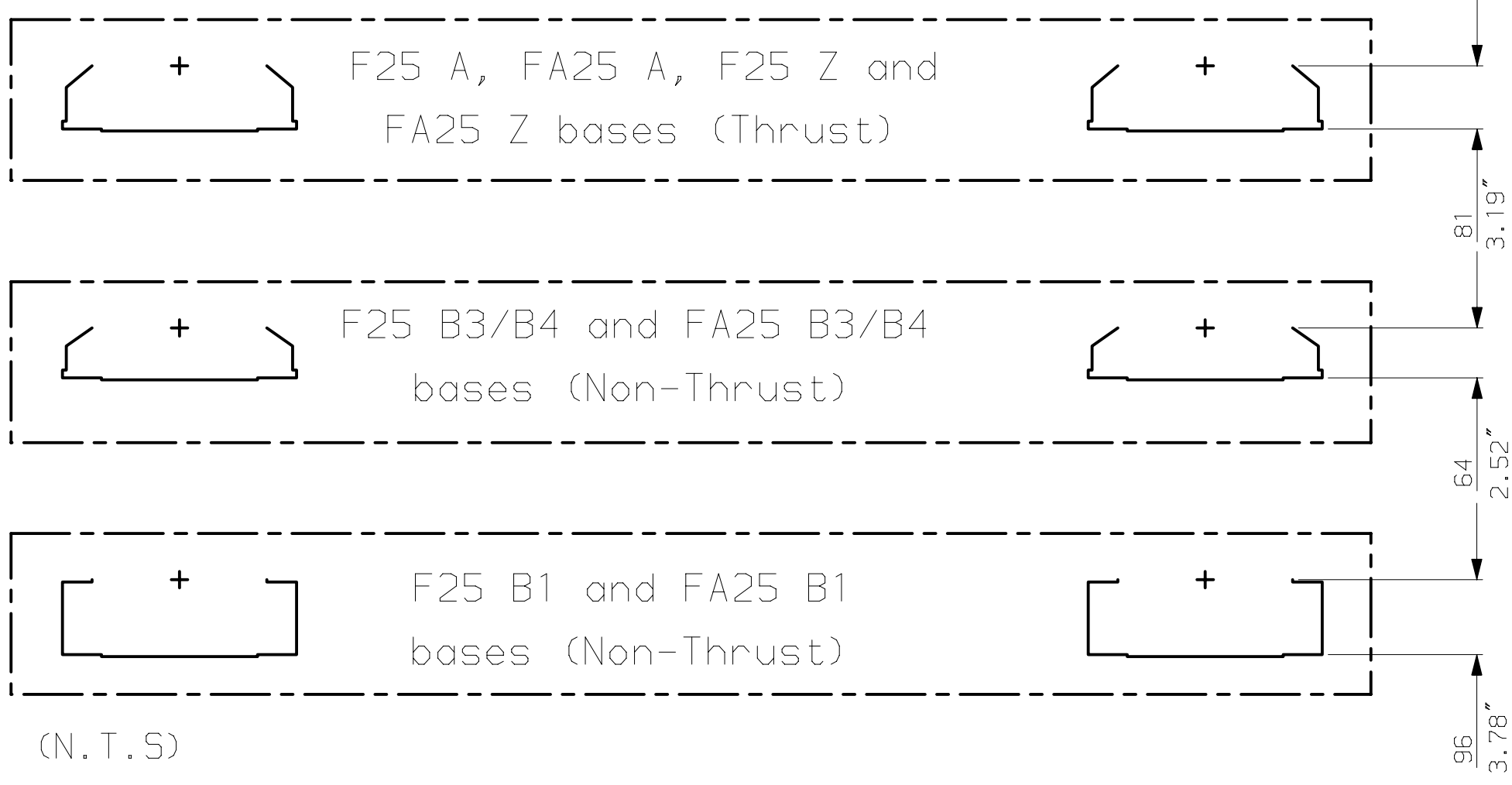
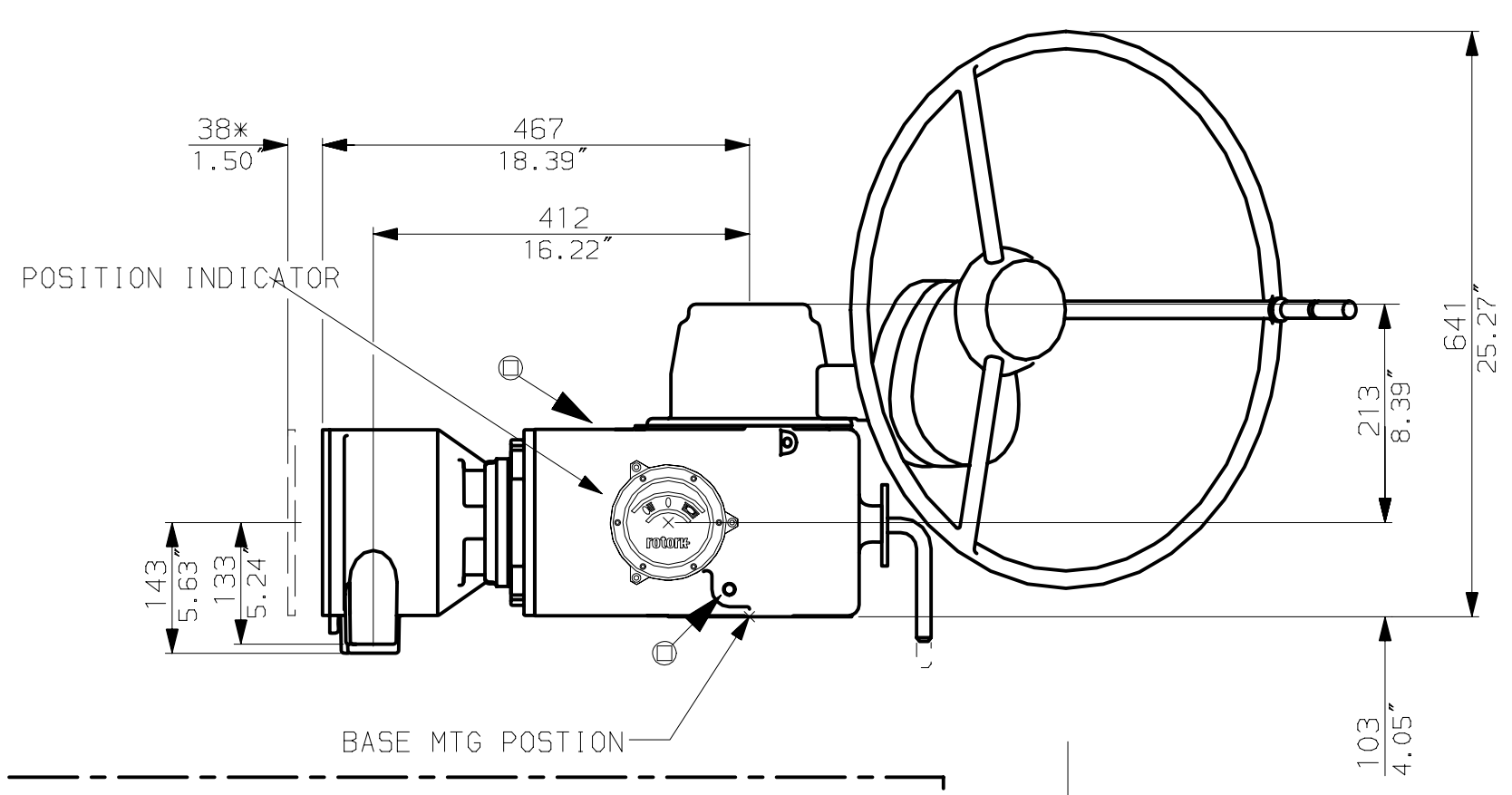
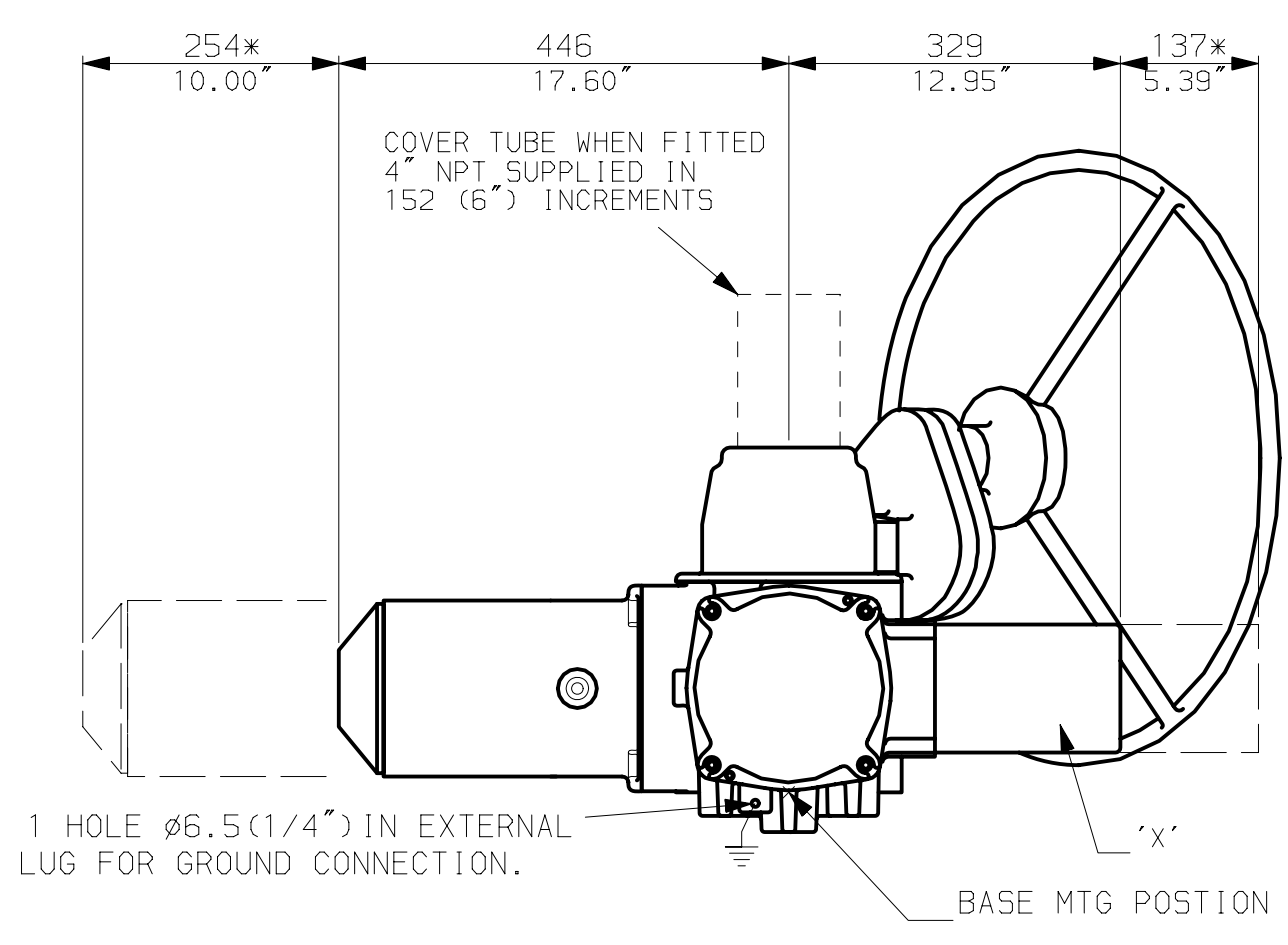
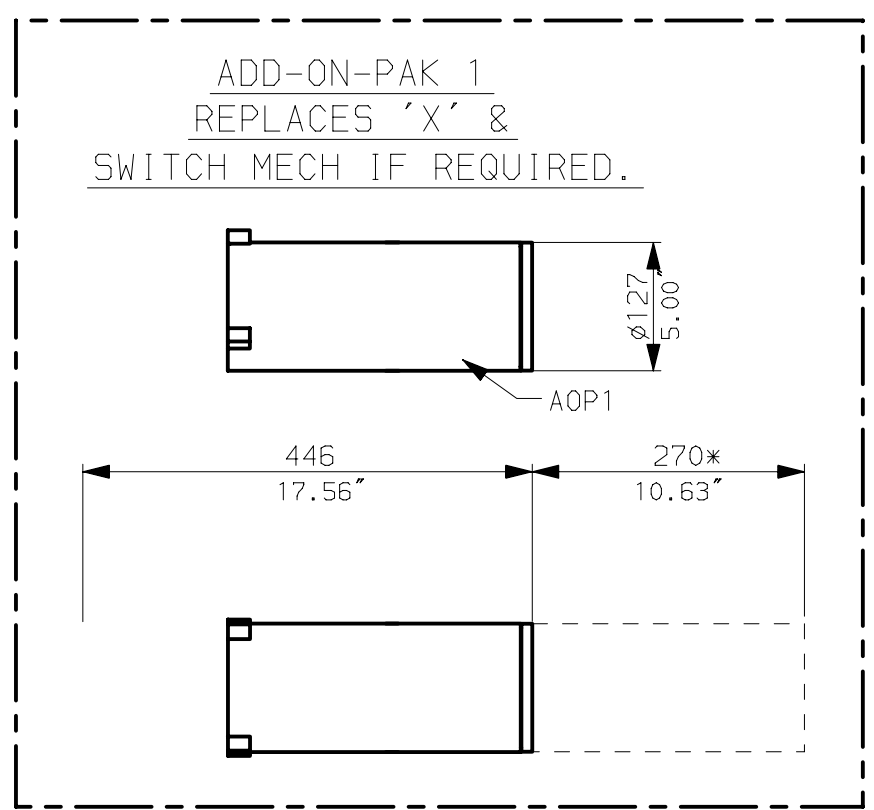
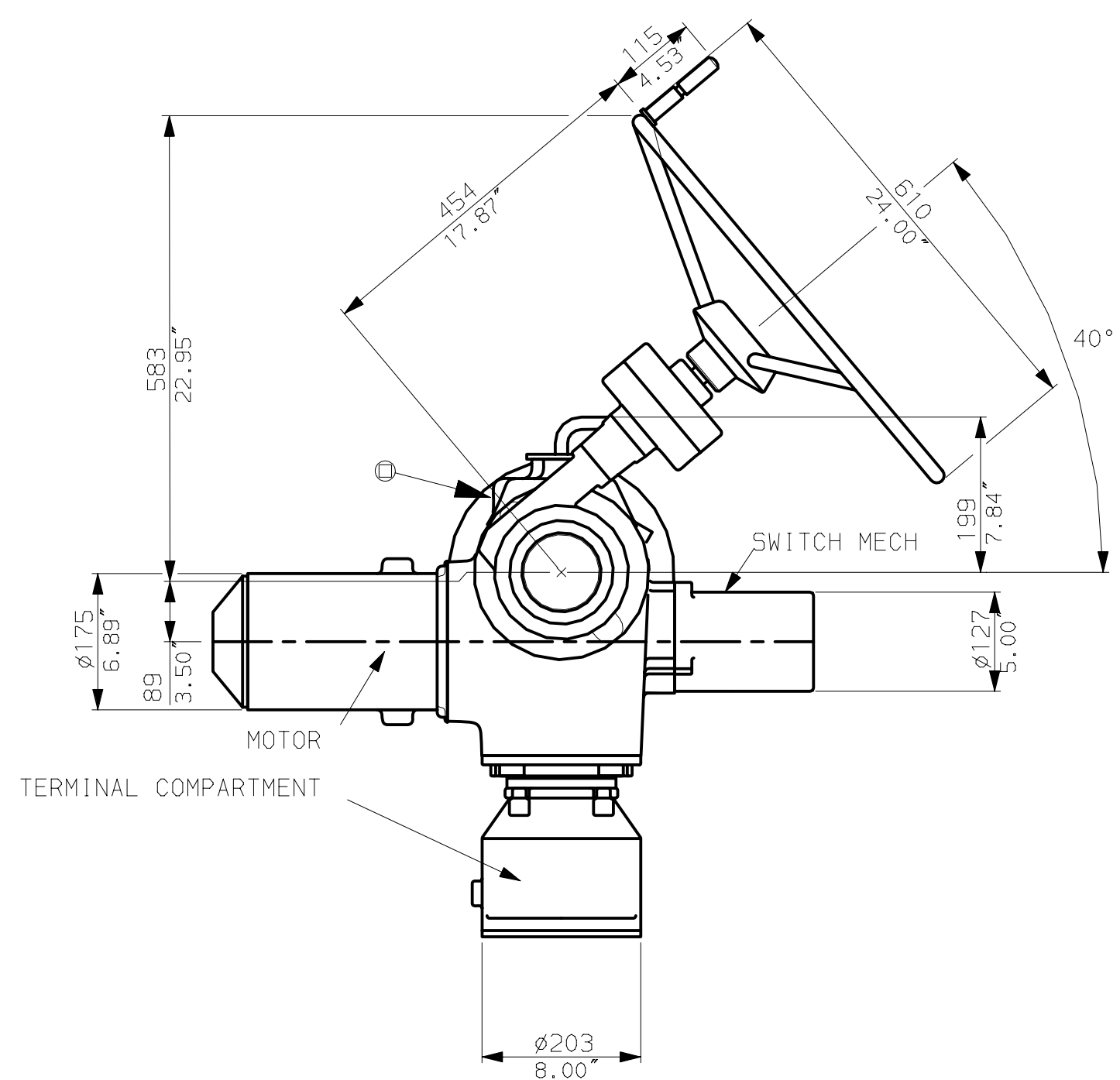
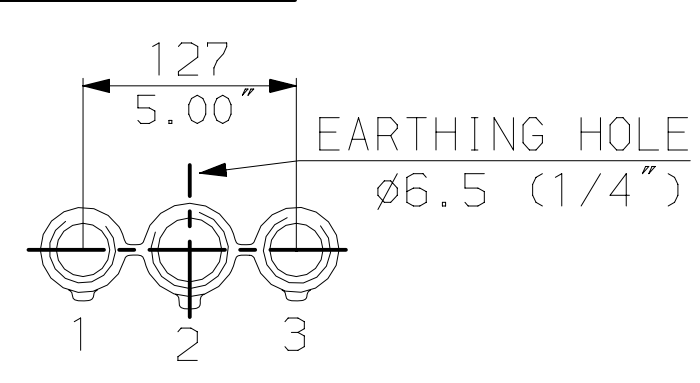


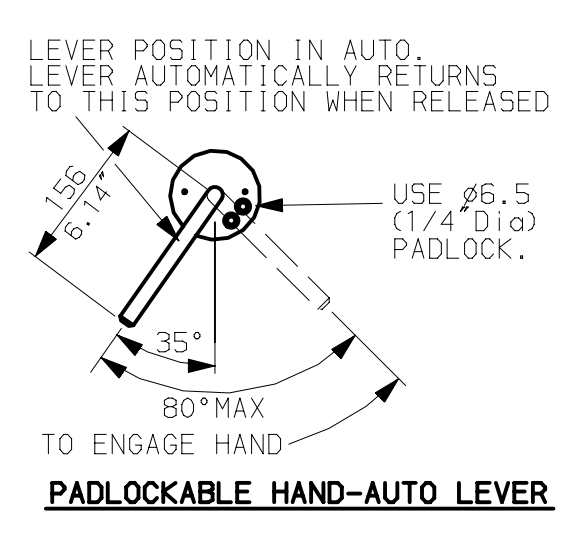
40A SYNCROSET WITH SPURRED SIDE HANDWHEEL



CONDUIT ENTRIES (N.T.S)



Nos.1 & 3 TAPPED 1" NPT
No.2 TAPPED 1 1/2" NPT
STANDARD ALTERNATIVES IF SPECIFIED
2 X M32, 1 X M40
2 X PG16, 1 X PG29



NOTES

Three BASE options are detailed to suit the relevant Coupling arrangement.
The required BASE for the SIDE & END views should be loaded to position indicated.

www.rotork.com	
AWT 40A SET (SSHW)	
Date 260303	Scale 1:15