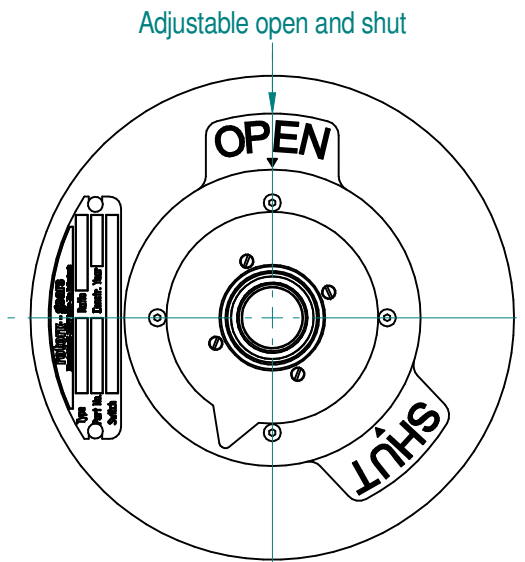
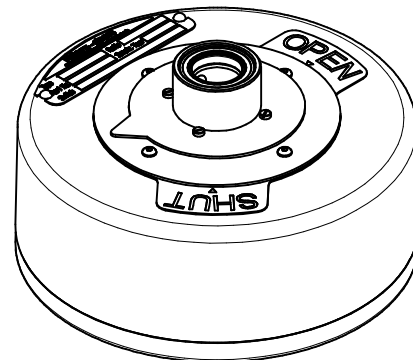


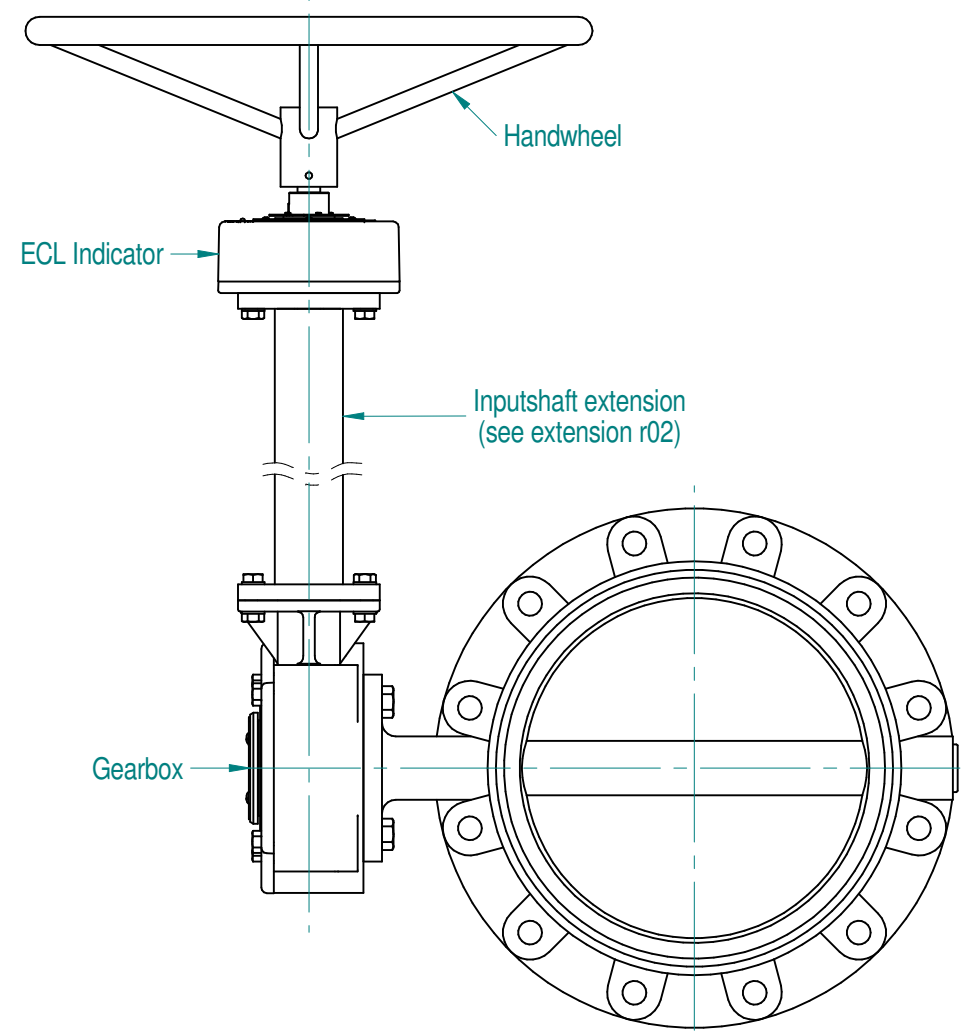
Drawing Number  
**ECL OPEN-SHUT ADJ**



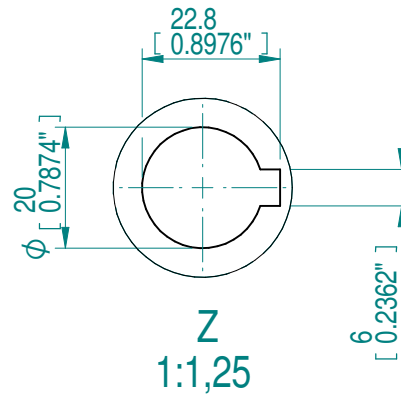
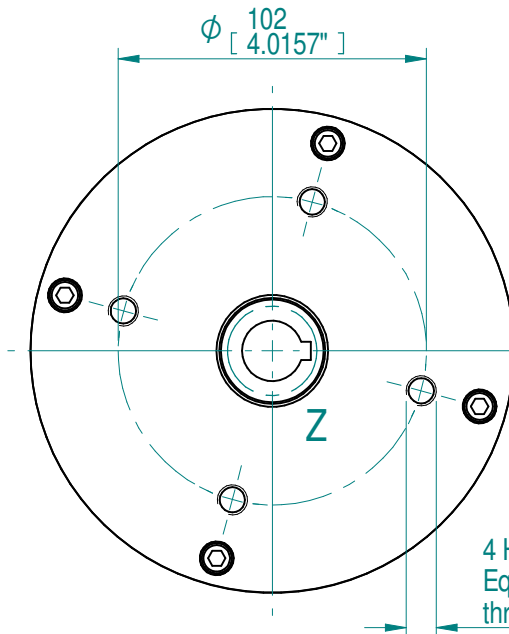
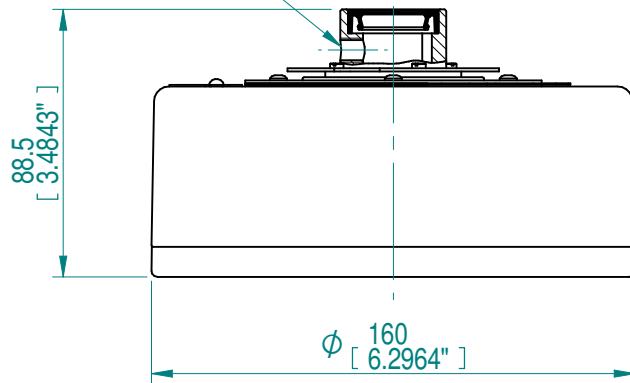
Adjustable open and shut



ISOMETRIC VIEW  
1:3



Hole M8  
To mount ECL on shaft



- Notes:
1. Outside housing from Aluminum
  2. All fasteners Stainless steel
  3. \* ECL5 is optional on request
  4. See SPI datasheet for ECL with intergrated switches
  5. Additionall adjustable 1/3 and 2/3 indication on request

DETAILS				SUITABLE FOR ALL GEARBOXES WITH A			
TYPE	RATIO	WEIGHT	HOUSE MATERIAL	MINIMUM TURNS TO CLOSE	MINIMUM RATIO	MAXIMUM TURNS TO CLOSE	MAXIMUM RATIO
ECL 1	34 : 1	3.2 kg (7 lbs)	ALUMINUM	5.5	22 : 1	28	112 : 1
ECL 2	112 : 1	3.2 kg (7 lbs)	ALUMINUM	18	72 : 1	94	376 : 1
ECL 3	363 : 1	3.4 kg (7.5 lbs)	ALUMINUM	58	232 : 1	305	1220 : 1
ECL 4	1178 : 1	3.6 kg (7.9 lbs)	ALUMINUM	190	760 : 1	985	3940 : 1
ECL 5*	3830 : 1	3.6 kg (7.9 lbs)	ALUMINUM	540	2160 : 1	3200	12800 : 1

01	-	-	-	-	14/06/2016	FIRST ISSUE
Iss.	EC	Revised	Checked	Approved	Date	Change Description

AS PART OF CONTINUOUS PRODUCT DEVELOPMENT, ALL DETAILS SUBJECT TO CHANGE WITHOUT PRIOR NOTICE. FOR UP TO DATE DETAILS PLEASE VISIT [www.rotork.com](http://www.rotork.com)

**rotork**  
Gears  
LOSSER - THE NETHERLANDS  
[www.rotork.com](http://www.rotork.com)

This drawing is confidential and is the property of Rotork Gears and must not be reproduced either wholly or partly. All rights in respect of patents, designs and copyrights are reserved. © 2016

Created: **Robbin Goosen** 14-6-2016  
Checked: **Henk Hoff** 14-6-2016  
Approved:

Dimensions in mm  
Scale 1:2,5

Title: **NEW ECL DATASHEET WITH ADJUSTABLE OPEN AND SHUT**  
Drawing Number: **ECL OPEN-SHUT ADJ** Iss. 01  
Sheet 1 of 1 Size A3