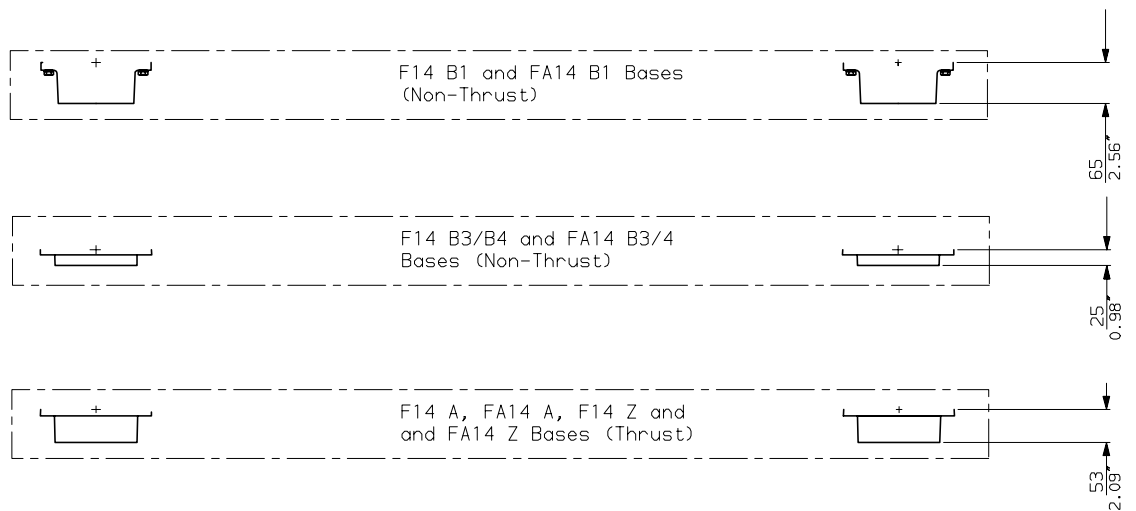
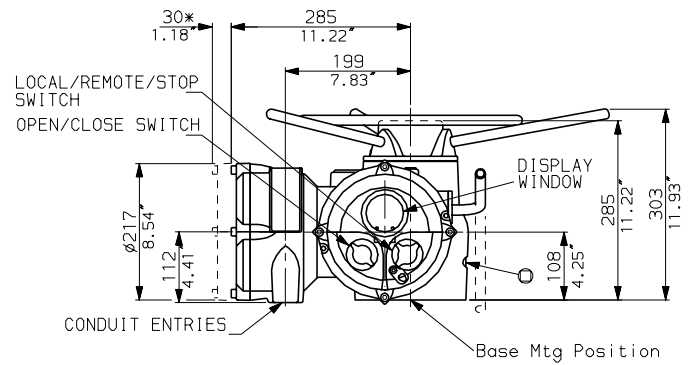
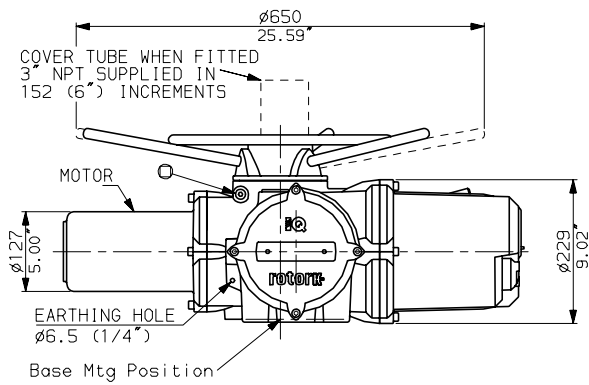
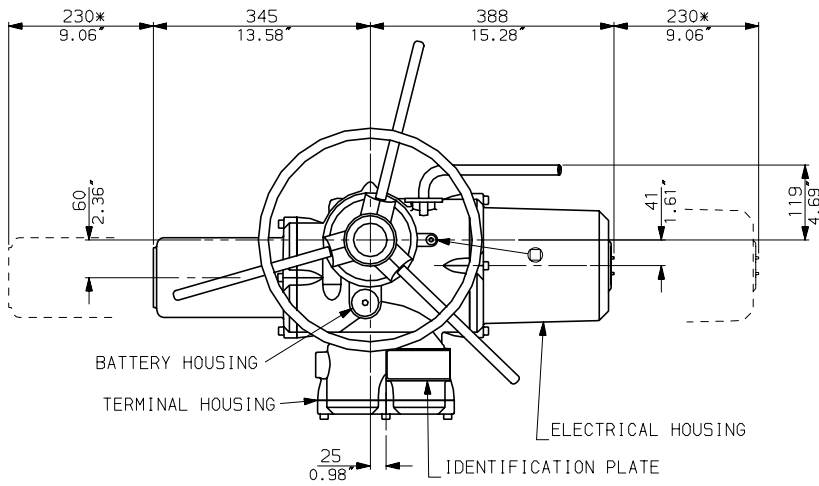
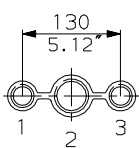




IQM20-25 WITH STANDARD  
TOP HANDWHEEL



CONDUIT ENTRIES



Nos.1 & 3 TAPPED 1" NPT  
 No.2 TAPPED 1 1/2" NPT  
 STANDARD ALTERNATIVES IF SPECIFIED  
 2 X M25, 1 X M40  
 2 X PG16, 1 X PG29

NOTES

Three BASE options are detailed to suit the relevant Coupling arrangement. The required BASE for the SIDE & END views should be loaded to position indicated.

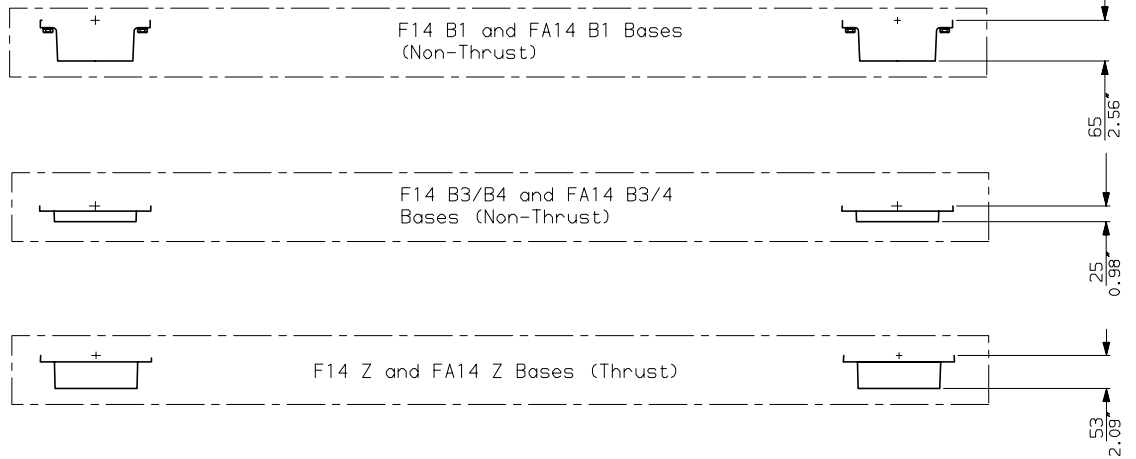
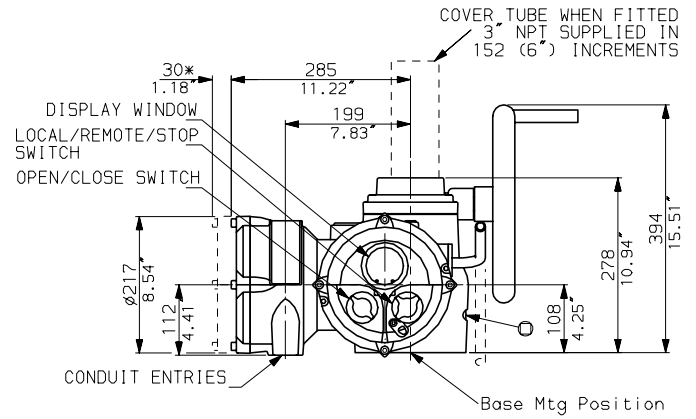
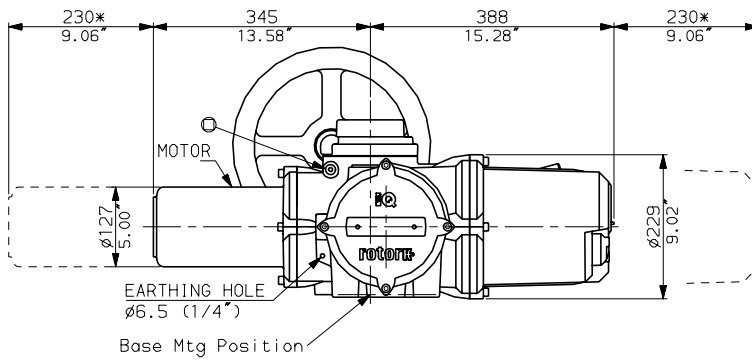
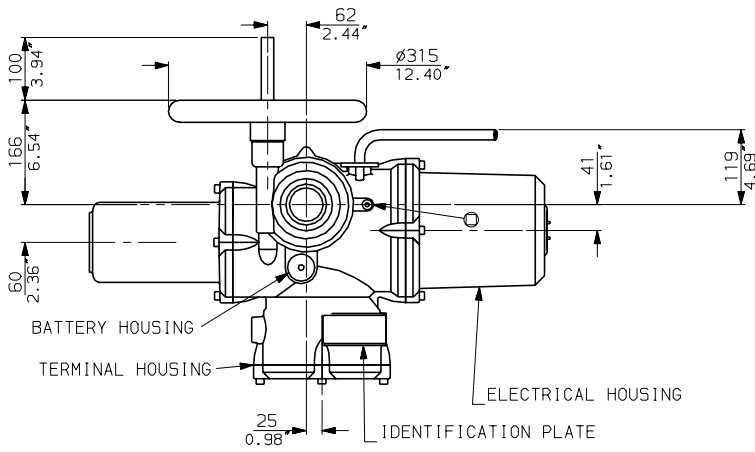
**rotork**

IQM20 (THW) DATA

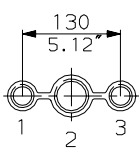
Date 020401

Scale 1:12

# IQM20-25 WITH OPTIONAL SIDE HANDWHEEL



## CONDUIT ENTRIES



Nos.1 & 3 TAPPED 1" NPT  
 No.2 TAPPED 1 1/2" NPT  
 STANDARD ALTERNATIVES IF SPECIFIED  
 2 X M25, 1 X M40  
 2 X PG16, 1 X PG29

## NOTES

Three BASE options are detailed to suit the relevant Coupling arrangement. The required BASE for the SIDE & END views should be loaded to position indicated.

**rotork**

IQM20 (SHW) DATA

Date 020401

Scale 1:12