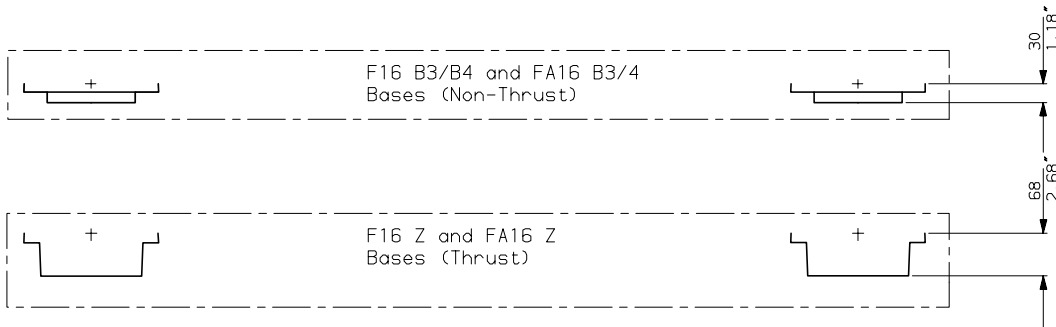
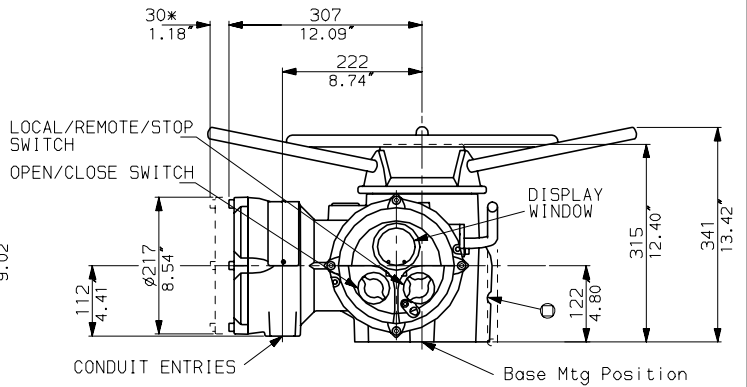
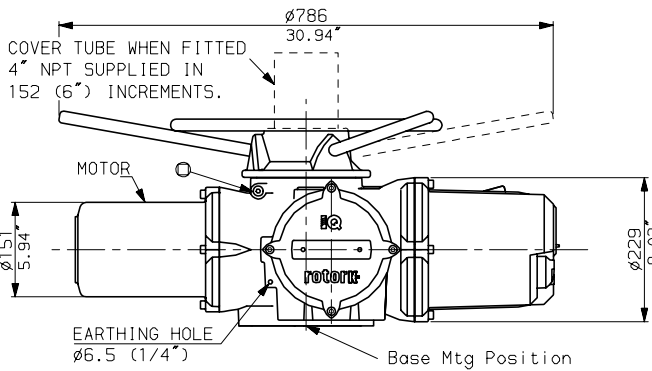
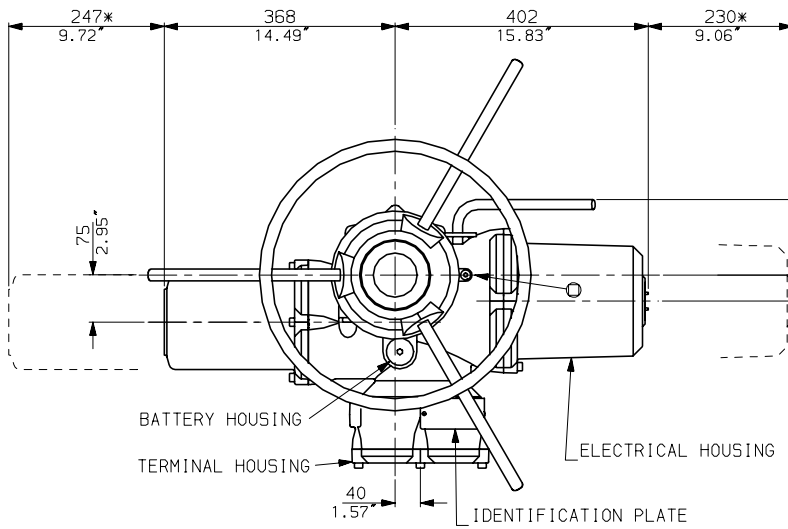
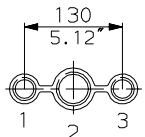




# IQM35 WITH STANDARD HANDWHEEL



### CONDUIT ENTRIES



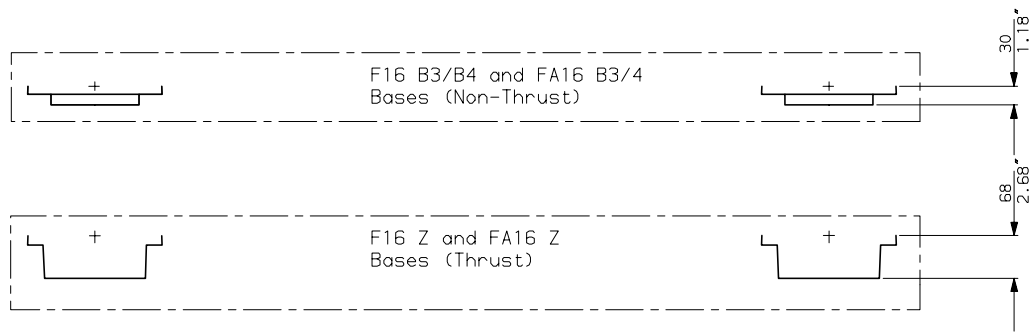
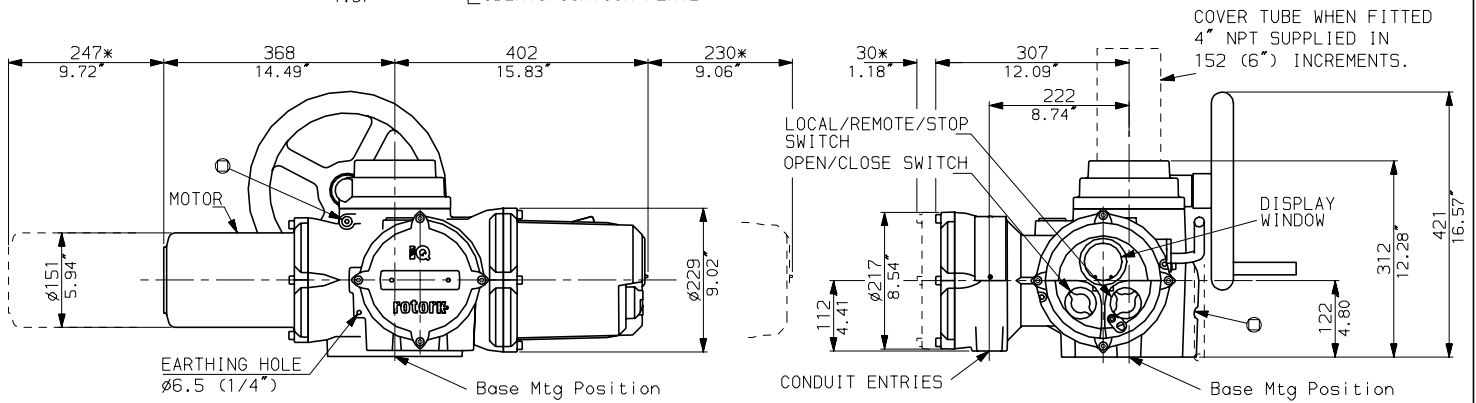
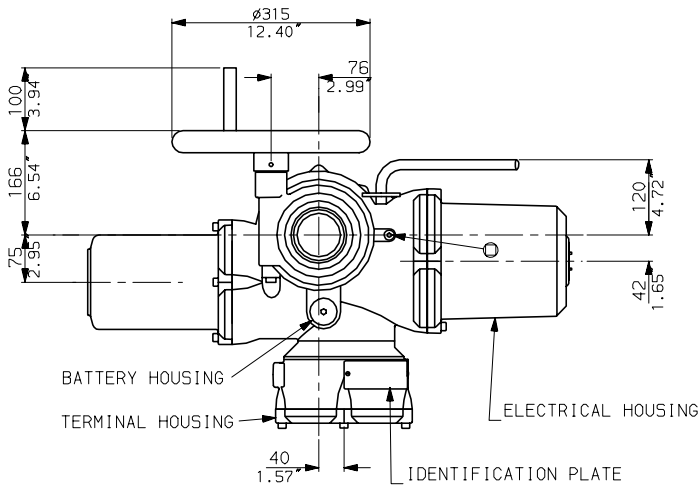
Nos.1 & 3 TAPPED 1" NPT  
 No.2 TAPPED 1 1/2" NPT  
 STANDARD ALTERNATIVES IF SPECIFIED  
 2 X M25, 1 X M40  
 2 X PG16, 1 X PG29

### NOTES

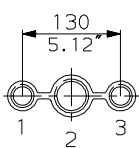
Two BASE options are detailed to suit the relevant Coupling arrangement. The required BASE for the SIDE & END views should be loaded to position indicated.

<b>rotork</b>	
IQM35 (THW) DATA	
Date 020401	Scale 1:12

IQM35 WITH OPTIONAL  
SIDE HANDWHEEL



CONDUIT ENTRIES



Nos.1 & 3 TAPPED 1" NPT  
 No.2 TAPPED 1 1/2" NPT  
 STANDARD ALTERNATIVES IF SPECIFIED  
 2 X M25, 1 X M40  
 2 X PG16, 1 X PG29

NOTES

Two BASE options are detailed to suit the relevant Coupling arrangement. The required BASE for the SIDE & END views should be loaded to position indicated.

**rotork**

IQM35 (SHW) DATA

Date 020401

Scale 1:12