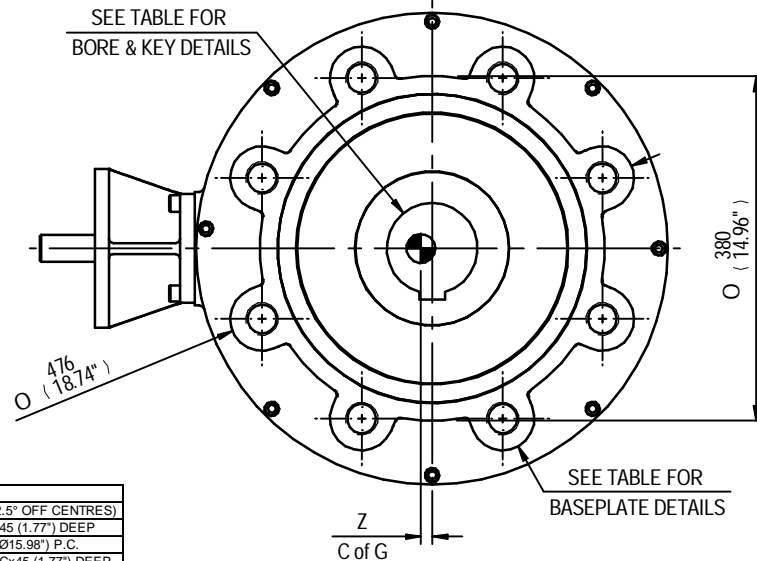
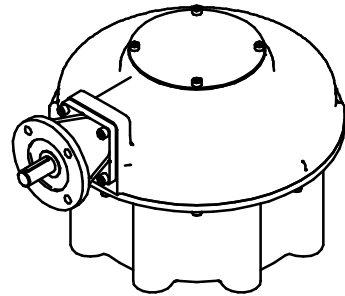
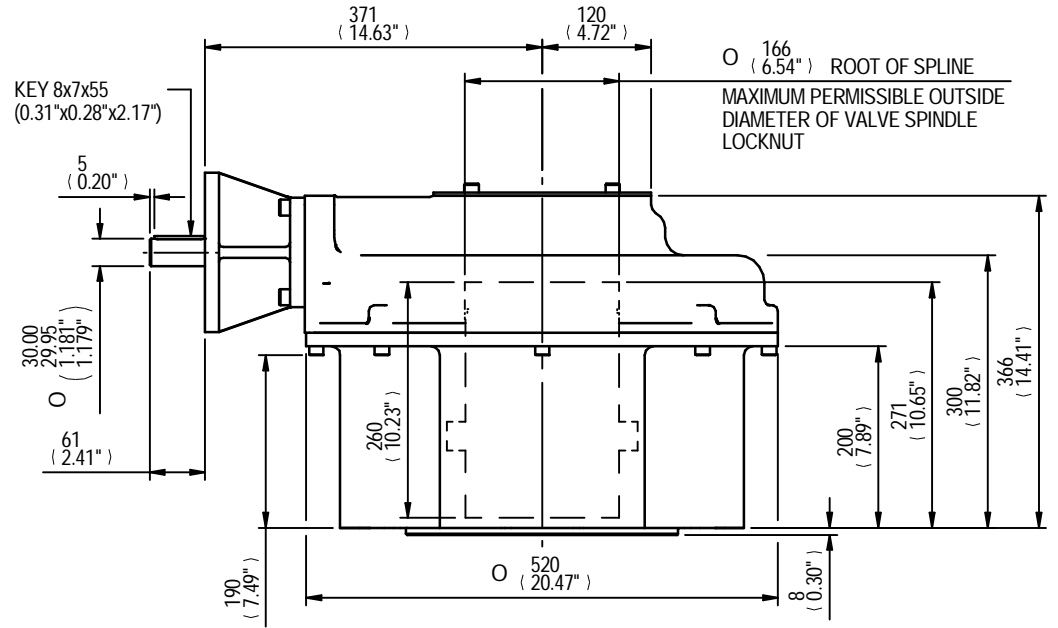
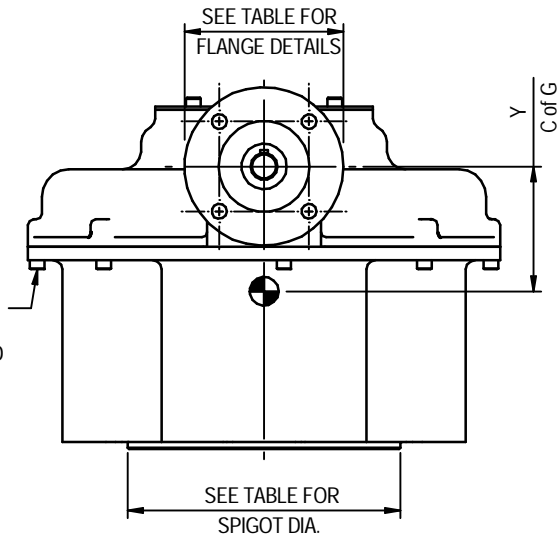


MOUNTING HOLES CAN BE POSITIONED ON CTRS BY REMOVING 8 BOLTS INDICATED AND REPOSITIONING



RATIO	M.A.	C.O.G.			MAX OUTPUT TORQUE Nm (lbs.ft)
		X	Y	Z	
6	5.10	0	138	12	8135 (6000)
8	6.80	0	136	12	8135 (6000)

MAX BORE SQ KEY			MAX BORE RECTANGULAR KEY		
STD	BORE	KEY	STD	BORE	KEY
BS4235	-	-	BS4235	130.0	32 x 18
BS46	4.625"	1 1/4" SQ	BS46	5.000"	1 1/4" x 7/8"
ANSI B17.1	4.625"	1 1/4" SQ	ANSI B17.1	5.000"	1 1/4" x 7/8"

MAX STEM SCREW ACCEPTANCE DIA
150 (5.875")

	INPUT FLANGE DETAILS					
	FLANGE	SHAFT	RECESS	RECESS	HOLE DETAILS	KEY
	O/DIA. & THICKNESS	DIA.	DIA.	DEPTH	45°(OFF CENTRES) DETAILS	DETAILS
ISO F14	Ø175 x 15 (Ø6.89" x 0.59")	Ø30.00-0.05 (Ø1.181"-0.002")	Ø100.05+0.05 (Ø3.939"+0.002")	5 (0.20")	4 HOLES Ø16.5 (Ø0.65") ON Ø140.0 (Ø5.51") P.C.	8x7x55 (0.31"x0.28"x2.17")
	Ø175 x 15 (Ø6.89" x 0.59")	Ø30.00-0.05 (Ø1.181"-0.002")	Ø95.27+0.05 (Ø3.751"+0.002")	5 (0.20")	4 HOLES Ø16.5 (Ø0.65") ON Ø140.0 (Ø5.51") P.C.	8x7x55 (0.31"x0.28"x2.17")

	BASEPLATE DETAILS	
	SPIGOT DIA.	HOLE DETAILS (22.5° OFF CENTRES)
ISO F40	Ø299.95-0.05 (Ø11.809"-0.002")	8 HOLES M36x45 (1.77") DEEP ON Ø406.0 (Ø15.98") P.C.
	Ø228.60-0.15 (Ø9.000"-0.006")	8 HOLES 1.25"UNCx45 (1.77") DEEP ON Ø406.4 (Ø16.00") P.C.

**rotork
gears**

IB14 GEARBOX
F14/FA14 INPUT F40/FA40 OUTPUT

DETAILS SUBJECT TO CHANGE WITHOUT PRIOR NOTICE

FOR UP TO DATE DETAILS VISIT www.rotork.com

APPROX WEIGHT 295.2 kg

DRAWING No	PUBIB14-F14-F40	Regina House Ring Road Bramley Leeds LS134ET United Kingdom
ISSUE	A	
DATE	13/05/2011	