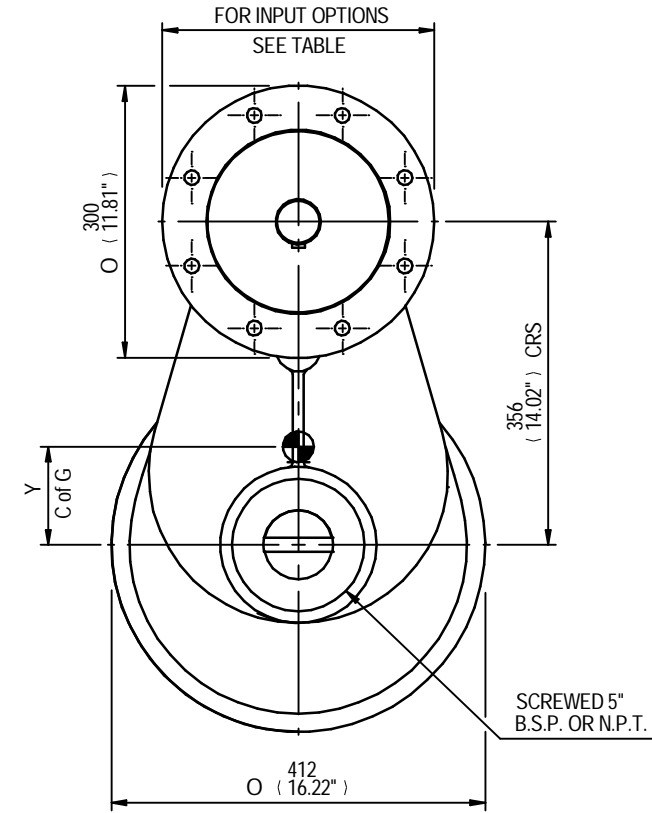
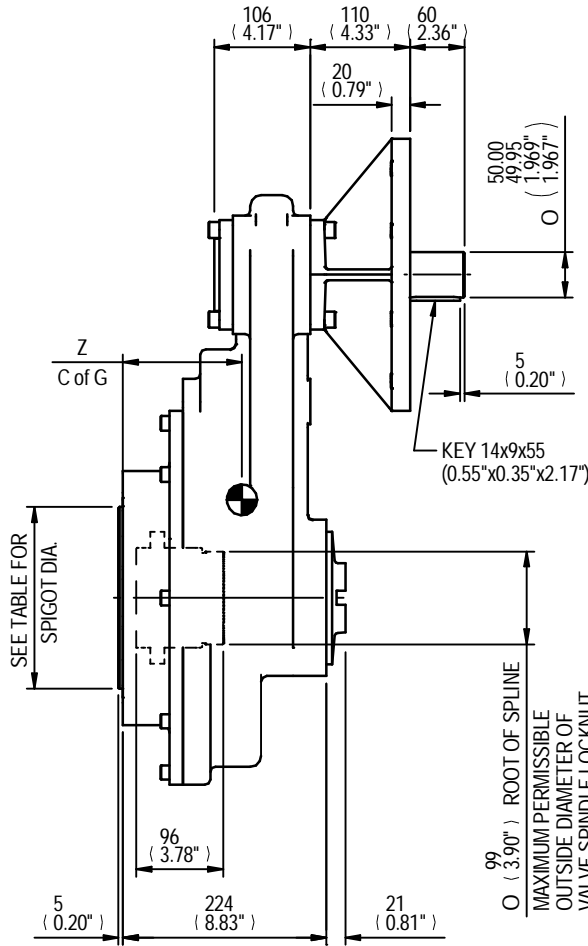


SEE TABLE FOR BORE & KEY DETAILS

SEE TABLE FOR BASEPLATE DETAILS

MOUNTING HOLES CAN BE POSITIONED ON CTRS BY REMOVING 8 BOLTS INDICATED AND REPOSITIONING



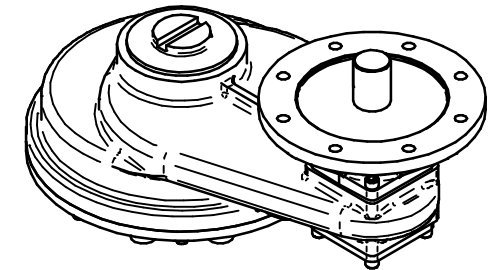
RATIO	M.A.	C.O.G.			MAX. OUTPUT TORQUE Nm (lbs.ft)
		X	Y	Z	
4	3.633	0	108	131	4067 (3000)
6	5.500	0	107	131	4067 (3000)
8	7.025	0	106	131	4067 (3000)
10	9.156	0	106	131	4067 (3000)
12	10.900	0	106	131	4067 (3000)
15	13.194	0	107	131	4067 (3000)

MAX BORE SQ KEY			MAX BORE RECTANGULAR KEY		
STD	BORE	KEY	STD	BORE	KEY
BS4235	-	-	BS4235	76.0	22 x 14
BS46	2.750"	3/4" SQ	BS46	3.000"	3/4" x 1/2"
ANSI B17.1	2.750"	5/8" SQ	ANSI B17.1	3.000"	3/4" x 1/2"

MAX STEM SCREW ACCEPTANCE DIA.
86 (3.375")

INPUT FLANGE DETAILS						
ISO F25	FLANGE O/DIA. & THICKNESS	SHAFT DIA.	RECESS DIA.	RECESS DEPTH	HOLE DETAILS	KEY DETAILS
		Ø300 x 20 (Ø11.81" x 0.79")	Ø50.00-0.05 (Ø1.969"-0.002")	Ø200.10+0.10 (Ø7.878"+0.004")	5 (0.20")	8 HOLES Ø16.5 (Ø0.65") ON Ø254.0 (Ø10.00") P.C.
FA25	Ø300 x 20 (Ø11.81" x 0.79")	Ø50.00-0.05 (Ø1.969"-0.002")	Ø152.37+0.10 (Ø5.999"+0.004")	5 (0.20")	8 HOLES Ø16.5 (Ø0.65") ON Ø254.0 (Ø10.00") P.C.	14x9x55 (0.55"x0.35"x2.17")

BASEPLATE DETAILS		
ISO F25	SPIGOT DIA.	HOLE DETAILS (22.5" OFF CENTRES)
	Ø199.95-0.05 (Ø7.872"-0.002")	8 HOLES M16x20 (0.79") DEEP ON Ø254.0 (Ø10.00") P.C.
FA25	Ø152.25-0.05 (Ø5.994"-0.002")	8 HOLES 5/8"UNCx20 (0.79") DEEP ON Ø254.4 (Ø10.00") P.C.



IS10 GEARBOX F25/FA25 INPUT F25/FA25 OUTPUT

DETAILS SUBJECT TO CHANGE WITHOUT PRIOR NOTICE

FOR UP TO DATE DETAILS VISIT www.rotork.com

APPROX WEIGHT 112.2 kg

DRAWING No	PUBIS10-F25-F25	Regina House Ring Road Bramley Leeds LS134ET United Kingdom
ISSUE	A	
DATE	03/06/2011	