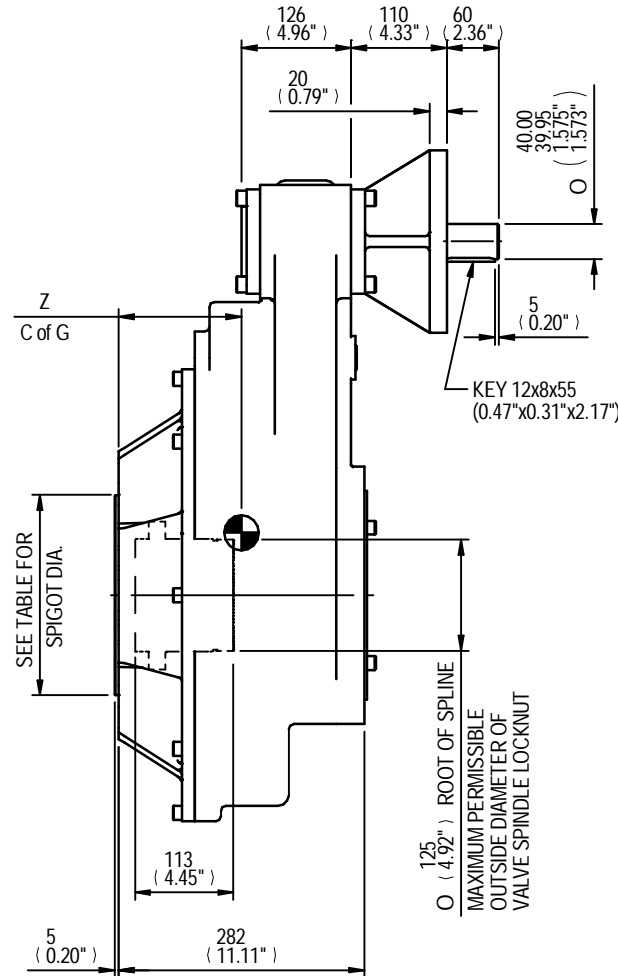


SEE TABLE FOR BORE & KEY DETAILS

SEE TABLE FOR BASEPLATE DETAILS

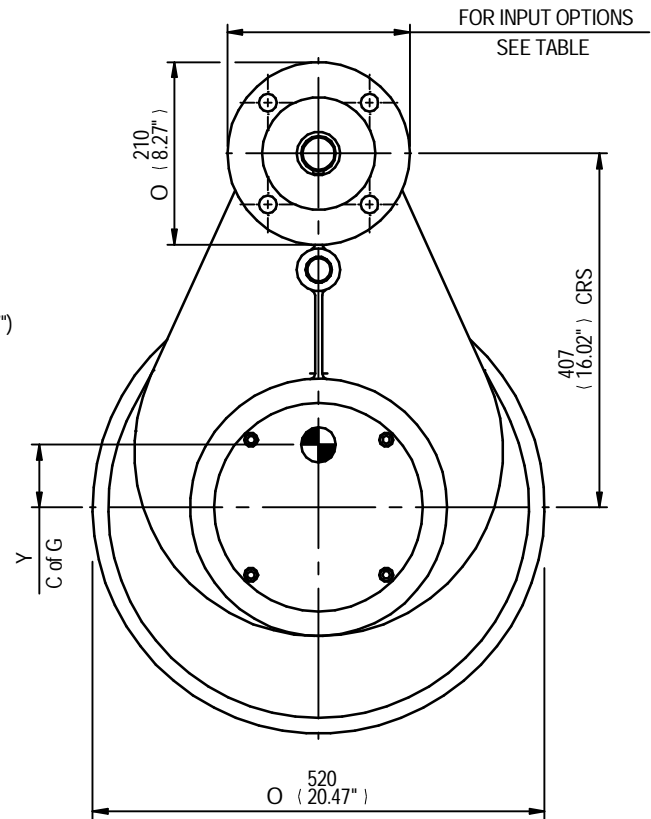
MOUNTING HOLES CAN BE POSITIONED ON CTRS BY REMOVING 8 BOLTS INDICATED AND REPOSITIONING



Z
C of G

SEE TABLE FOR SPIGOT DIA.

125 (4.92) ROOT OF SPLINE
MAXIMUM PERMISSIBLE OUTSIDE DIAMETER OF VALVE SPINDLE LOCKNUT



FOR INPUT OPTIONS SEE TABLE

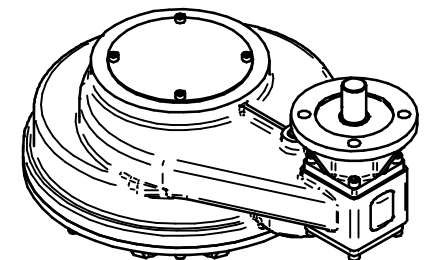
Y
C of G

RATIO	M.A.	C.O.G.			MAX OUTPUT TORQUE Nm (lbs.ft)
		X	Y	Z	
8	7.280	0	72	141	8135 (6000)
10	8.993	0	72	141	8135 (6000)
12	10.649	0	72	141	8135 (6000)
15	13.632	0	72	141	8135 (6000)

MAX BORE SQ KEY			MAX BORE RECTANGULAR KEY			MAX STEM SCREW ACCEPTANCE DIA
STD	BORE	KEY	STD	BORE	KEY	
BS4235	-	-	BS4235	96.0	28 x 16	100 (3.875)
BS46	3.500	7/8" SQ	BS46	3.625	1" x 3/4"	
ANSI B17.1	3.500	7/8" SQ	ANSI B17.1	3.750	7/8" x 5/8"	

	INPUT FLANGE DETAILS					
	FLANGE O/DIA. & THICKNESS	SHAFT DIA.	RECESS DIA.	RECESS DEPTH	HOLE DETAILS 45°(OFF CENTRES)	KEY DETAILS
	ISO F16	Ø210 x 20 (Ø8.27" x 0.79")	Ø40.00-0.05 (Ø1.575"-0.002")	Ø130.05+0.05 (Ø5.120"+0.002")	5 (0.20")	4 HOLES Ø20.5 (Ø0.81") ON Ø165.0 (Ø6.50") P.C. (0.47"x0.31"x2.17")
FA16	Ø210 x 20 (Ø8.27" x 0.79")	Ø40.00-0.05 (Ø1.575"-0.002")	Ø126.92+0.05 (Ø4.997"+0.002")	5 (0.20")	4 HOLES Ø20.5 (Ø0.81") ON Ø165.0 (Ø6.50") P.C. (0.47"x0.31"x2.17")	12x8x55

	BASEPLATE DETAILS	
	SPIGOT DIA.	HOLE DETAILS (22.5° OFF CENTRES)
	ISO F30	Ø229.95-0.05 (Ø9.053"-0.002")
FA30	Ø177.70-0.05 (Ø6.996"-0.002")	8 HOLES 3/4"UNCx25 (0.98") DEEP ON Ø298.5 (Ø11.75") P.C.



IS12 GEARBOX F16/FA16 INPUT F30/FA30 OUTPUT

DETAILS SUBJECT TO CHANGE WITHOUT PRIOR NOTICE

FOR UP TO DATE DETAILS VISIT www.rotork.com

APPROX WEIGHT 178.5 kg

DRAWING No	PUBIS12-F16-F30	Regina House Ring Road Bramley Leeds LS134ET United Kingdom
ISSUE	A	
DATE	22/06/2011	