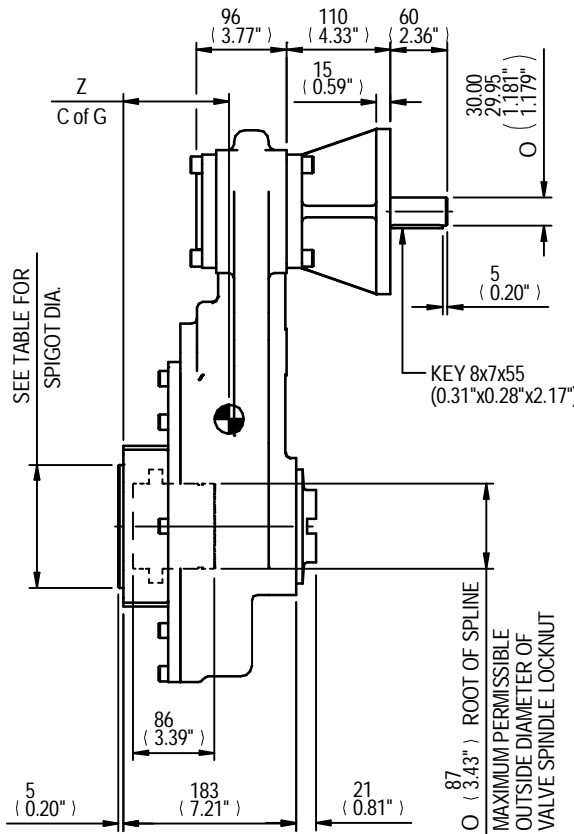


SEE TABLE FOR BORE & KEY DETAILS

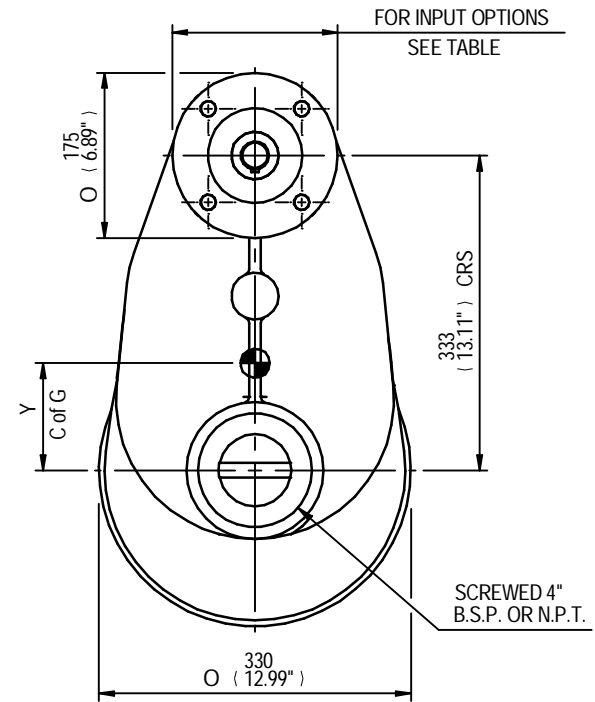
SEE TABLE FOR BASEPLATE DETAILS

MOUNTING HOLES CAN BE POSITIONED ON CTRS BY REMOVING 8 BOLTS INDICATED AND REPOSITIONING



SEE TABLE FOR SPIGOT DIA.

87 (3.43") ROOT OF SPLINE
MAXIMUM PERMISSIBLE OUTSIDE DIAMETER OF VALVE SPINDLE LOCKNUT



FOR INPUT OPTIONS SEE TABLE

SCREWED 4" B.S.P. OR N.P.T.

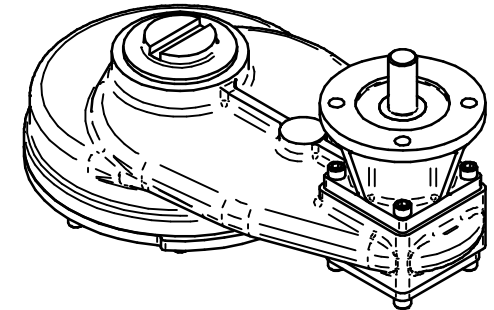
RATIO	M.A.	C.O.G.			MAX. OUTPUT TORQUE Nm (lbs.ft)
		X	Y	Z	
4	3.600	0	113	112	2033 (1500)
6	5.490	0	113	115	2033 (1500)
8	7.156	0	111	115	2033 (1500)
10	9.180	0	108	114	2033 (1500)
12	11.030	0	110	115	2033 (1500)
15	13.520	0	110	115	2033 (1500)

MAX BORE SQ KEY			MAX BORE RECTANGULAR KEY		
STD	BORE	KEY	STD	BORE	KEY
BS4235	-	-	BS4235	68.0	20X12
BS46	2.500"	5/8" SQ	BS46	2.625"	3/4"X1/2"
ANSI B17.1	2.500"	5/8" SQ	ANSI B17.1	2.625"	5/8"X7/16"

MAX STEM SCREW ACCEPTANCE DIA.
73(2.750")

INPUT FLANGE DETAILS					
ISO	FLANGE	SHAFT	RECESS	RECESS	HOLE DETAILS
	O/DIA. & THICKNESS	DIA.	DIA.	DEPTH	45°(OFF CENTRES) DETAILS
F14	Ø175 x 15 (Ø6.89" x 0.59")	Ø30.00-0.05 (Ø1.181"-0.002")	Ø100.05+0.05 (Ø3.939"+0.002")	5 (0.20")	4 HOLES Ø16.5 (Ø0.65") ON Ø140.0 (Ø5.51") P.C. (0.31"x0.28"x2.17")
	Ø175 x 15 (Ø6.89" x 0.59")	Ø30.00-0.05 (Ø1.181"-0.002")	Ø95.27+0.05 (Ø3.751"+0.002")	5 (0.20")	4 HOLES Ø16.5 (Ø0.65") ON Ø140.0 (Ø5.51") P.C. (0.31"x0.28"x2.17")

BASEPLATE DETAILS	
ISO	HOLE DETAILS (45° OFF CENTRES)
F16	Ø129.95-0.05 (Ø5.116"-0.002")
FA16	Ø126.87-0.25 (Ø4.995"-0.010")



IS8 GEARBOX F14/FA14 INPUT F16/FA16 OUTPUT

DETAILS SUBJECT TO CHANGE WITHOUT PRIOR NOTICE

FOR UP TO DATE DETAILS VISIT www.rotork.com

APPROX WEIGHT 66.9 kg

DRAWING No	PUBIS8-F14-F16	Regina House Ring Road Bramley Leeds LS134ET United Kingdom
ISSUE	A	
DATE	10/06/2011	