

CIRCUIT IS DRAWN FOR A VALVE IN THE FULLY CLOSED POSITION

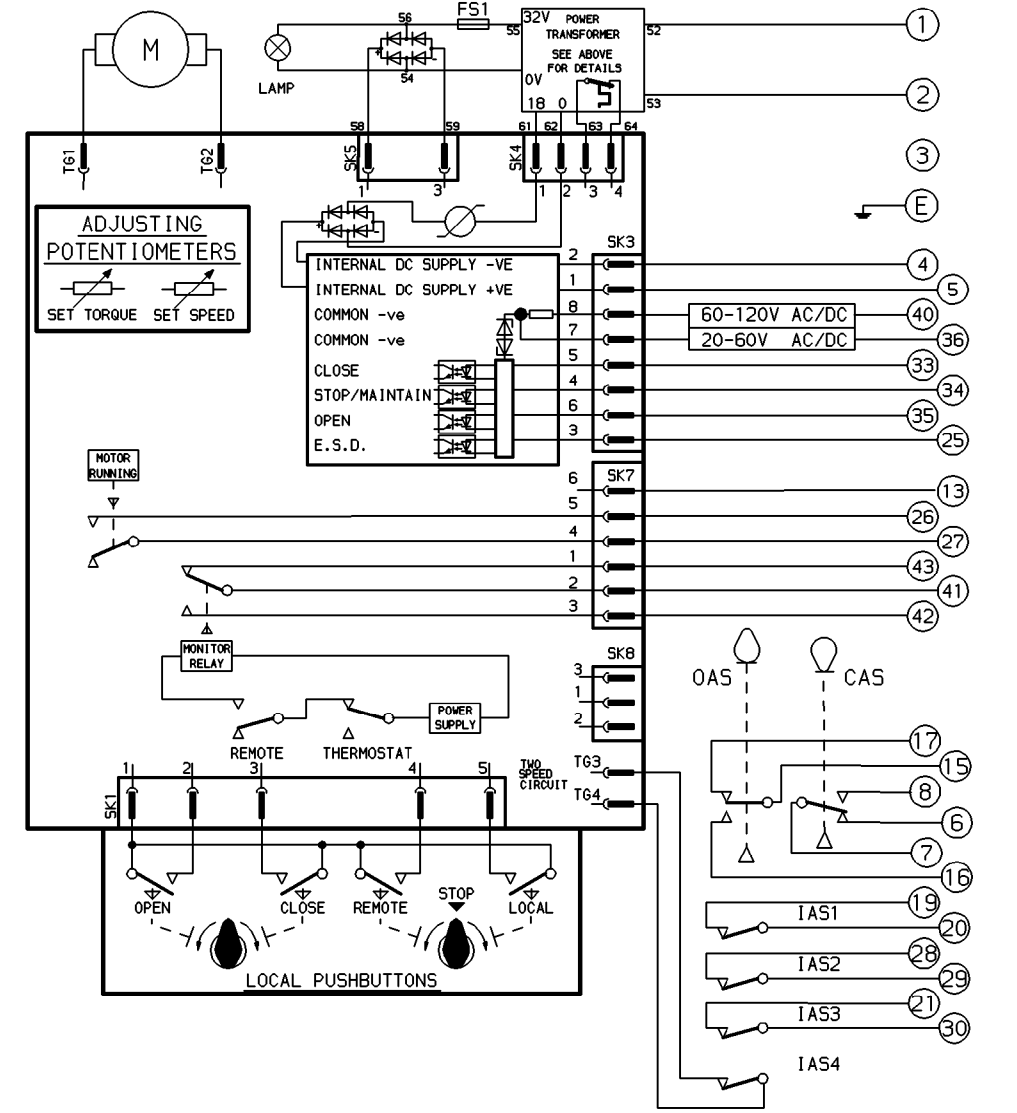
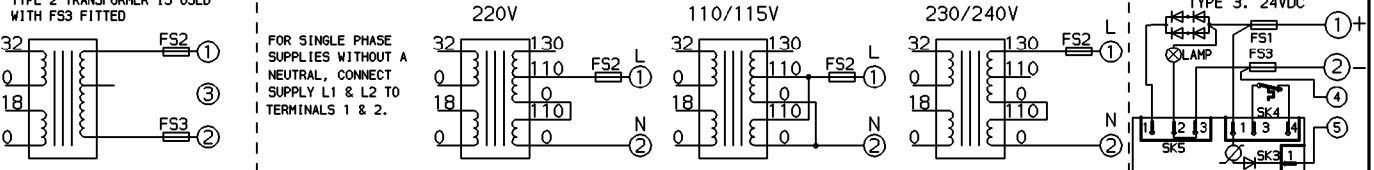
CIRCUIT DIAGRAM No -REV

QP29P04-01

TYPE 1a. 380/415V 3 PHASE
 TYPE 1b. 460/500V 3 PHASE
 TYPE 1c. 575/660V 3 PHASE
 FOR 220V 3 PHASE SUPPLIES
 TYPE 2 TRANSFORMER IS USED
 WITH FS3 FITTED

INTERNAL CONNECTIONS TO POWER TRANSFORMER

TYPE 2. SINGLE PHASE



- OAS - OPEN AUXILIARY SWITCH
 - CAS - CLOSE AUXILIARY SWITCH
- FS1 90mm LONG MOTOR 10A
120mm LONG MOTOR 25A
 - FS2 7.5A QUICK BLOW
 - FS3 A.C.SUPPLIES 7.5A QUICK BLOW
24V D.C.SUPPLY -
90mm LONG MOTOR 10A
120mm LONG MOTOR 25A
- | SWITCH | TERM.No. | OPEN | INTERMEDIATE | SHUT |
|--------|----------------|------|--------------|------|
| OAS | 15-16
15-17 | | | |
| CAS | 7-8
7-6 | | | |
- SWITCH MADE

FOR TYPICAL REMOTE CONTROL, INDICATING, MONITORING & ALARM CIRCUITS SEE PUBLICATION AQ4/5

WIRES ARE IDENTIFIED AT EACH END BY TERMINAL No. OR BY WIRE No.

CONTROL SIGNAL THRESHOLD VOLTAGES
 MINIMUM 'ON' 17V.
 MAXIMUM 'OFF' 3V.

MINIMUM CONTROL SIGNAL 300mS.

E.S.D. CONTROL SIGNAL VOLTAGE MUST BE EQUAL TO OR GREATER THAN ALL OTHER CONTROL SIGNAL VOLTAGES.

No 01	DATE	REVISION FIRST ISSUE	No	DATE	REVISION	DRAWN T.A DATE 280691	CHECKED K.S DATE 280691	AQ MK2 + 2 SPEED + INT SWITCHES .
						rotork		CIRCUIT DIAGRAM No -REV QP29P04-01
						ROTORK CONTROLS LIMITED BATH ENGLAND BA1 3JQ		