

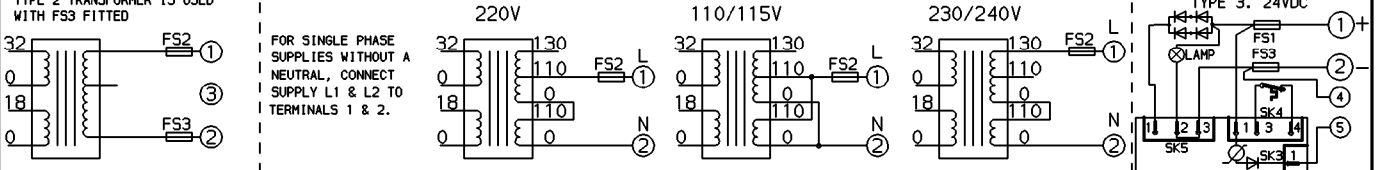
CIRCUIT IS DRAWN FOR A VALVE IN THE FULLY CLOSED POSITION

CIRCUIT DIAGRAM No - REV

TYPE 1a. 380/415V 3 PHASE
 TYPE 1b. 460/500V 3 PHASE
 TYPE 1c. 575/660V 3 PHASE
 FOR 220V 3 PHASE SUPPLIES
 TYPE 2 TRANSFORMER IS USED
 WITH FS3 FITTED

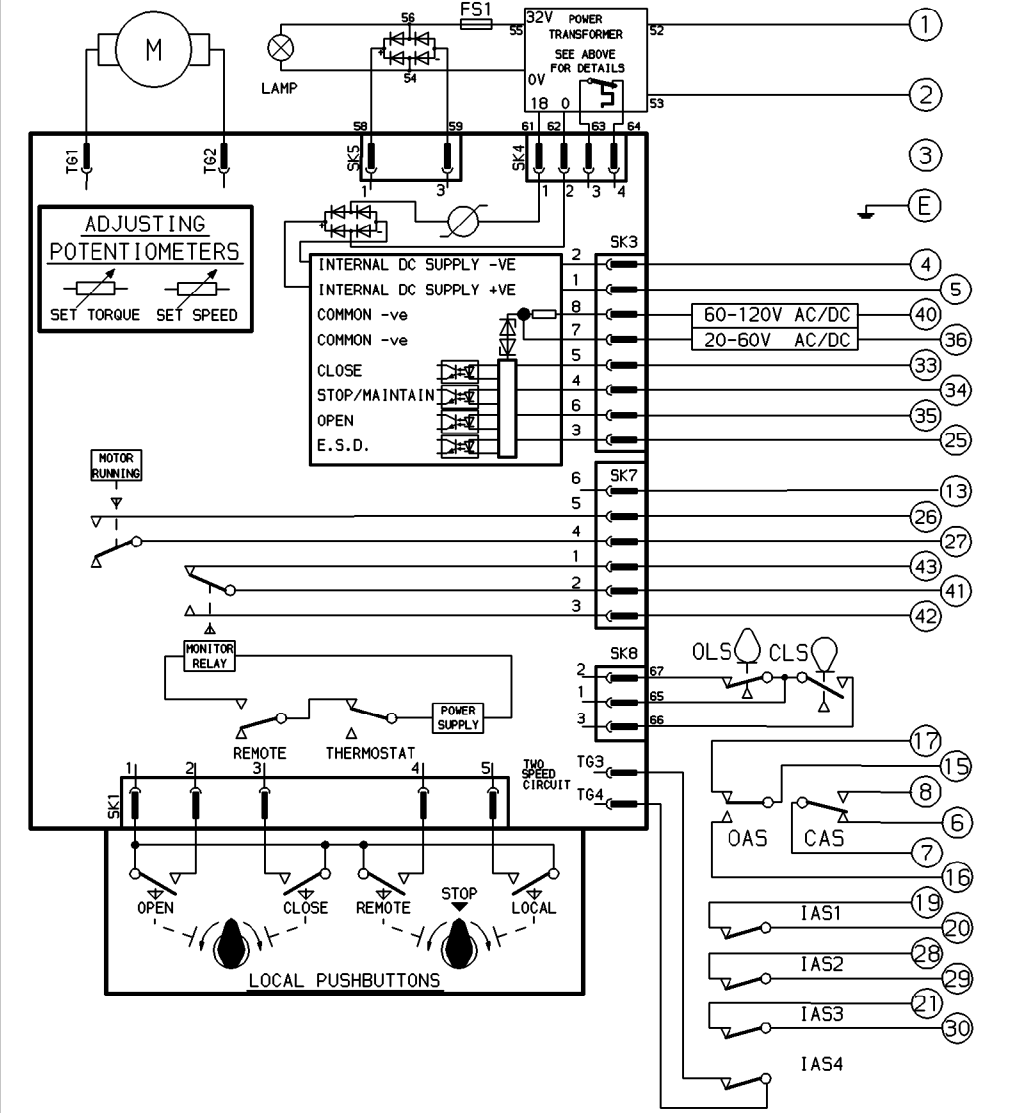
INTERNAL CONNECTIONS TO POWER TRANSFORMER

TYPE 2. SINGLE PHASE



FOR SINGLE PHASE SUPPLIES WITHOUT A NEUTRAL, CONNECT SUPPLY L1 & L2 TO TERMINALS 1 & 2.

QP19P04-02



OLS - OPEN LIMIT SWITCH
 CLS - CLOSE LIMIT SWITCH
 OAS - OPEN AUXILIARY SWITCH
 CAS - CLOSE AUXILIARY SWITCH

- FS1 90mm LONG MOTOR 10A
120mm LONG MOTOR 25A
- FS2 7.5A QUICK BLOW
- FS3 A.C.SUPPLIES 7.5A QUICK BLOW
24V D.C.SUPPLY -
90mm LONG MOTOR 10A
120mm LONG MOTOR 25A

SWITCH	TERM.No.	OPEN	INTERMEDIATE	SHUT
OLS	-			
CLS	-			
OAS	15-16 15-17			
CAS	7-8 7-6			

SWITCH MADE

FOR TYPICAL REMOTE CONTROL, INDICATING, MONITORING & ALARM CIRCUITS SEE PUBLICATION AQ4/5

WIRES ARE IDENTIFIED AT EACH END BY TERMINAL No. OR BY WIRE No.

CONTROL SIGNAL THRESHOLD VOLTAGES
 MAXIMUM 'OFF' 3V.
 MINIMUM CONTROL SIGNAL 300mS.
 E.S.D. CONTROL SIGNAL VOLTAGE MUST BE EQUAL TO OR GREATER THAN ALL OTHER CONTROL SIGNAL VOLTAGES.

No 02	DATE	REVISION
	P.J.W 010992	SIMILAR TO QP19P04 JOB No ---- LIMIT SWITCH WIRING CORRECTED CHECKED K.S

rotork

ROTORK CONTROLS LTD
 BATH ENGLAND, BA1 3JQ.
 tel (0225) 428451

ROTORK CONTROLS INC
 ROCHESTER, NY 14624.
 tel (716) 328-1550

DRAWN	T.A
DATE	251191
CHECKED	K.S
DATE	251191

**AQ MK2 + 4 INT SW +
 2 SPEED.**

CIRCUIT DIAGRAM No -REV
QP19P04-02