

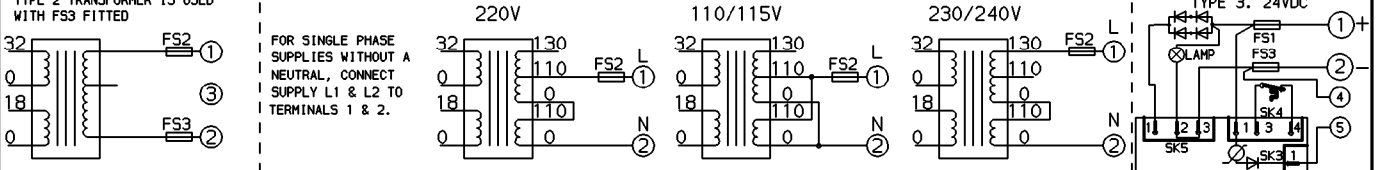
CIRCUIT IS DRAWN FOR A VALVE IN THE FULLY CLOSED POSITION

CIRCUIT DIAGRAM No -REV

TYPE 1a. 380/415V 3 PHASE
 TYPE 1b. 460/500V 3 PHASE
 TYPE 1c. 575/660V 3 PHASE
 FOR 220V 3 PHASE SUPPLIES
 TYPE 2 TRANSFORMER IS USED
 WITH FS3 FITTED

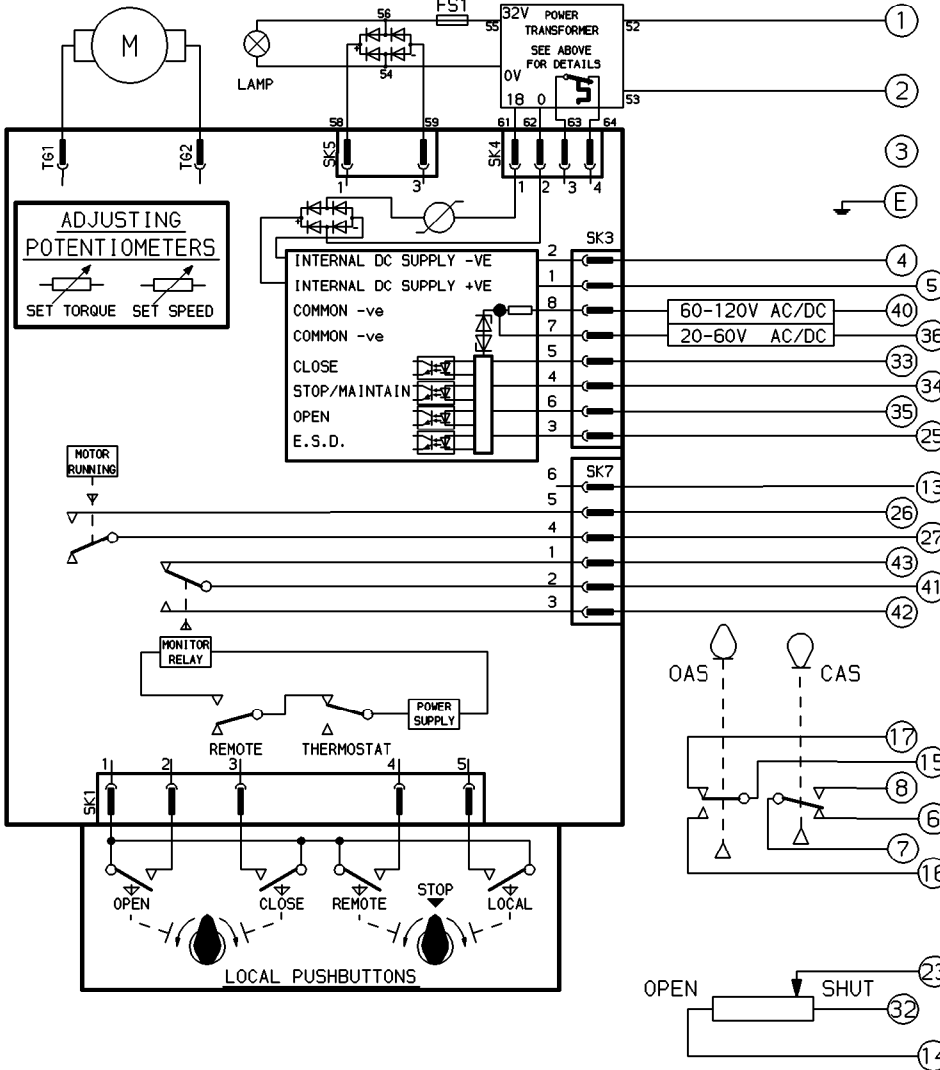
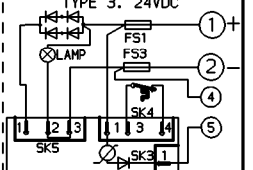
INTERNAL CONNECTIONS TO POWER TRANSFORMER

TYPE 2. SINGLE PHASE



QP22P00-01

TYPE 3. 24VDC



OAS - OPEN AUXILIARY SWITCH
 CAS - CLOSE AUXILIARY SWITCH

- FS1 90mm LONG MOTOR 10A
120mm LONG MOTOR 25A
- FS2 7.5A QUICK BLOW
- FS3 A.C.SUPPLIES 7.5A QUICK BLOW
24V D.C.SUPPLY -
90mm LONG MOTOR 10A
120mm LONG MOTOR 25A

SWITCH	TERM.No.	OPEN	INTERMEDIATE	SHUT
OAS	15-16 15-17			
CAS	7-8 7-6			

■ SWITCH MADE

FOR TYPICAL REMOTE CONTROL, INDICATING, MONITORING & ALARM CIRCUITS SEE PUBLICATION AQ4/5

WIRES ARE IDENTIFIED AT EACH END BY TERMINAL No. OR BY WIRE No.

CONTROL SIGNAL THRESHOLD VOLTAGES
 MINIMUM 'ON' 17V.
 MAXIMUM 'OFF' 3V.

MINIMUM CONTROL SIGNAL 300mS.

E.S.D. CONTROL SIGNAL VOLTAGE MUST BE EQUAL TO OR GREATER THAN ALL OTHER CONTROL SIGNAL VOLTAGES.

No 01	DATE 111090	REVISION	No	DATE	REVISION	DRAWN SB DATE 111090	CHECKED PS DATE 111090	AQ MK2 + SINGLE POT. + 2 AUX.SWITCHES & LAMP
rotork							ROTORK CONTROLS LIMITED BATH ENGLAND BA1 3JQ	CIRCUIT DIAGRAM No -REV QP22P00-01