

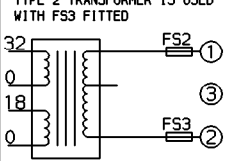
CIRCUIT IS DRAWN FOR A VALVE IN THE FULLY CLOSED POSITION

CIRCUIT DIAGRAM No - REV

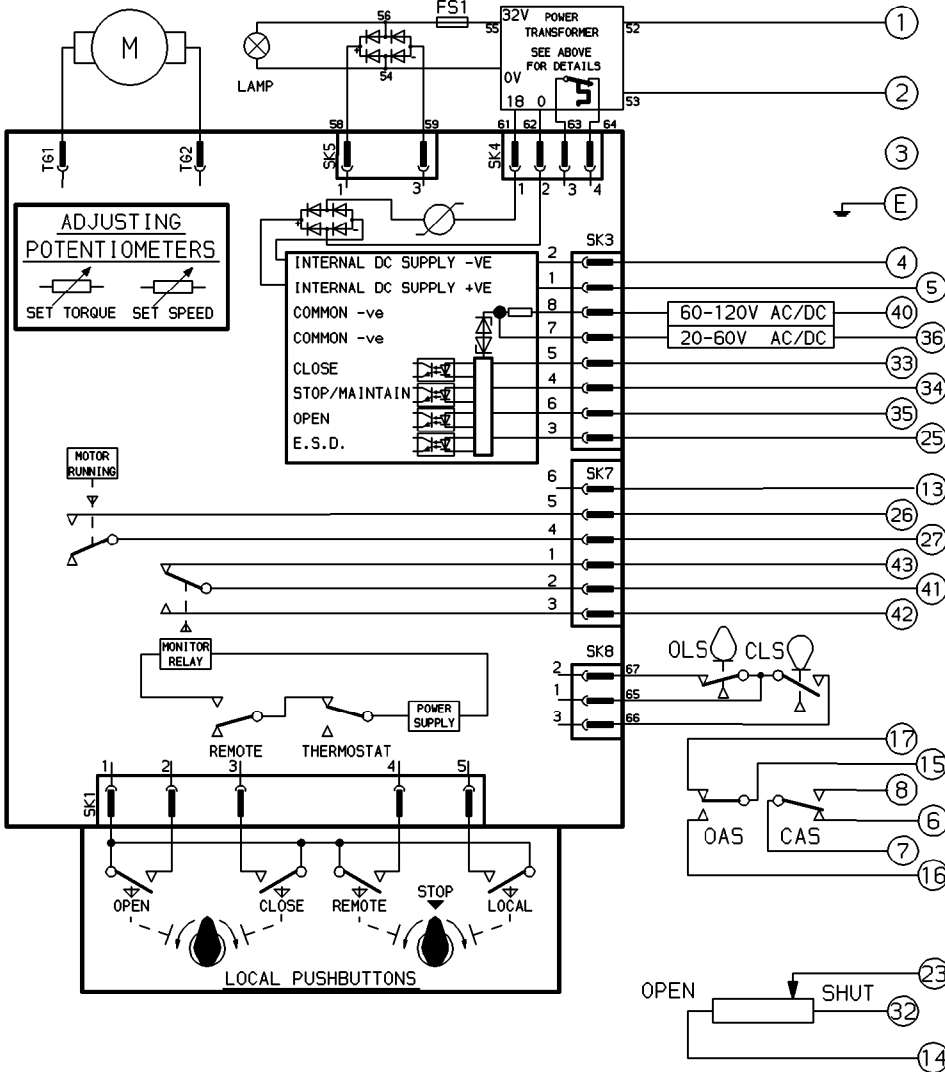
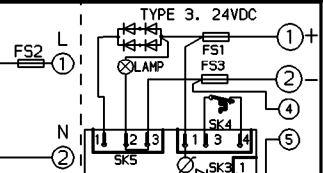
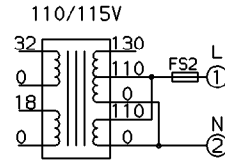
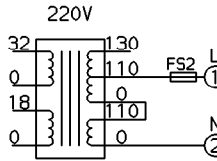
TYPE 1a. 380/415V 3 PHASE  
 TYPE 1b. 460/500V 3 PHASE  
 TYPE 1c. 575/660V 3 PHASE  
 FOR 220V 3 PHASE SUPPLIES  
 TYPE 2 TRANSFORMER IS USED  
 WITH FS3 FITTED

INTERNAL CONNECTIONS TO POWER TRANSFORMER

TYPE 2. SINGLE PHASE



FOR SINGLE PHASE SUPPLIES WITHOUT A NEUTRAL, CONNECT SUPPLY L1 & L2 TO TERMINALS 1 & 2.



OLS - OPEN LIMIT SWITCH  
 CLS - CLOSE LIMIT SWITCH  
 OAS - OPEN AUXILIARY SWITCH  
 CAS - CLOSE AUXILIARY SWITCH

- FS1 90mm LONG MOTOR 10A  
120mm LONG MOTOR 25A
- FS2 7.5A QUICK BLOW
- FS3 A.C.SUPPLIES 7.5A QUICK BLOW  
24V D.C.SUPPLY -  
90mm LONG MOTOR 10A  
120mm LONG MOTOR 25A

SWITCH	TERM.No.	OPEN	INTERMEDIATE	SHUT
OLS	-			
CLS	-			
OAS	15-16 15-17			
CAS	7-8 7-6			

■ SWITCH MADE

FOR TYPICAL REMOTE CONTROL, INDICATING, MONITORING & ALARM CIRCUITS SEE PUBLICATION AQ4/5

WIRES ARE IDENTIFIED AT EACH END BY TERMINAL No. OR BY WIRE No.

CONTROL SIGNAL THRESHOLD VOLTAGES  
 MAXIMUM 'OFF' 3V.

MINIMUM CONTROL SIGNAL 300mS.

E.S.D. CONTROL SIGNAL VOLTAGE MUST BE EQUAL TO OR GREATER THAN ALL OTHER CONTROL SIGNAL VOLTAGES.

No 02  
 DATE P.J.W 280892  
 REVISION SIMILAR TO QP12P00  
 JOB No ----  
 LIMIT SWITCH WIRING CORRECTED  
 CHECKED K.S



ROTORK CONTROLS LTD  
 BATH ENGLAND, BA1 3JQ.  
 tel (0225) 428451  
 ROTORK CONTROLS INC  
 ROCHESTER, NY 14624.  
 tel (716) 328-1550

DRAWN SB  
 DATE 111090  
 CHECKED PS  
 DATE 111090

AQ MK2 + SINGLE POT.  
 SWITCH MECH + LAMP  
 CIRCUIT DIAGRAM No -REV  
 QP12P00-02