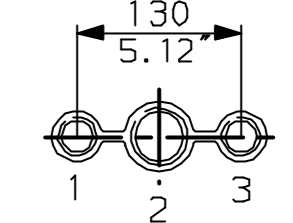


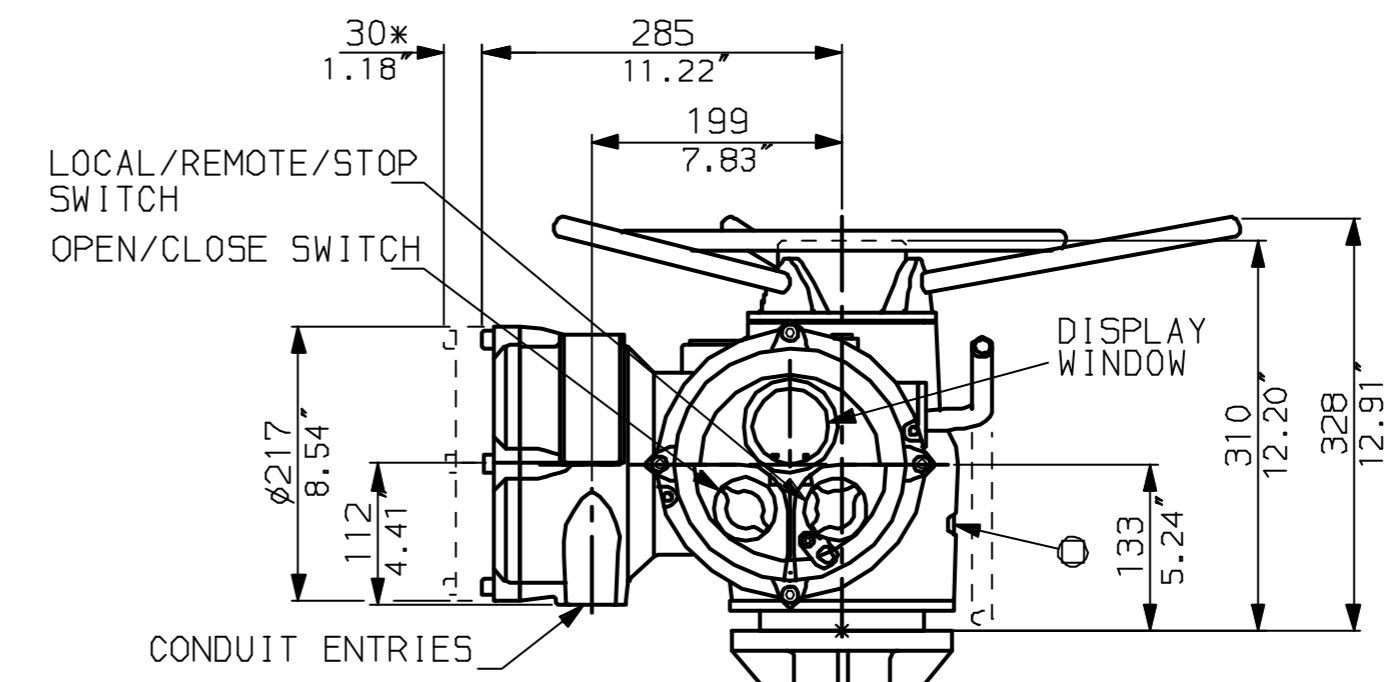
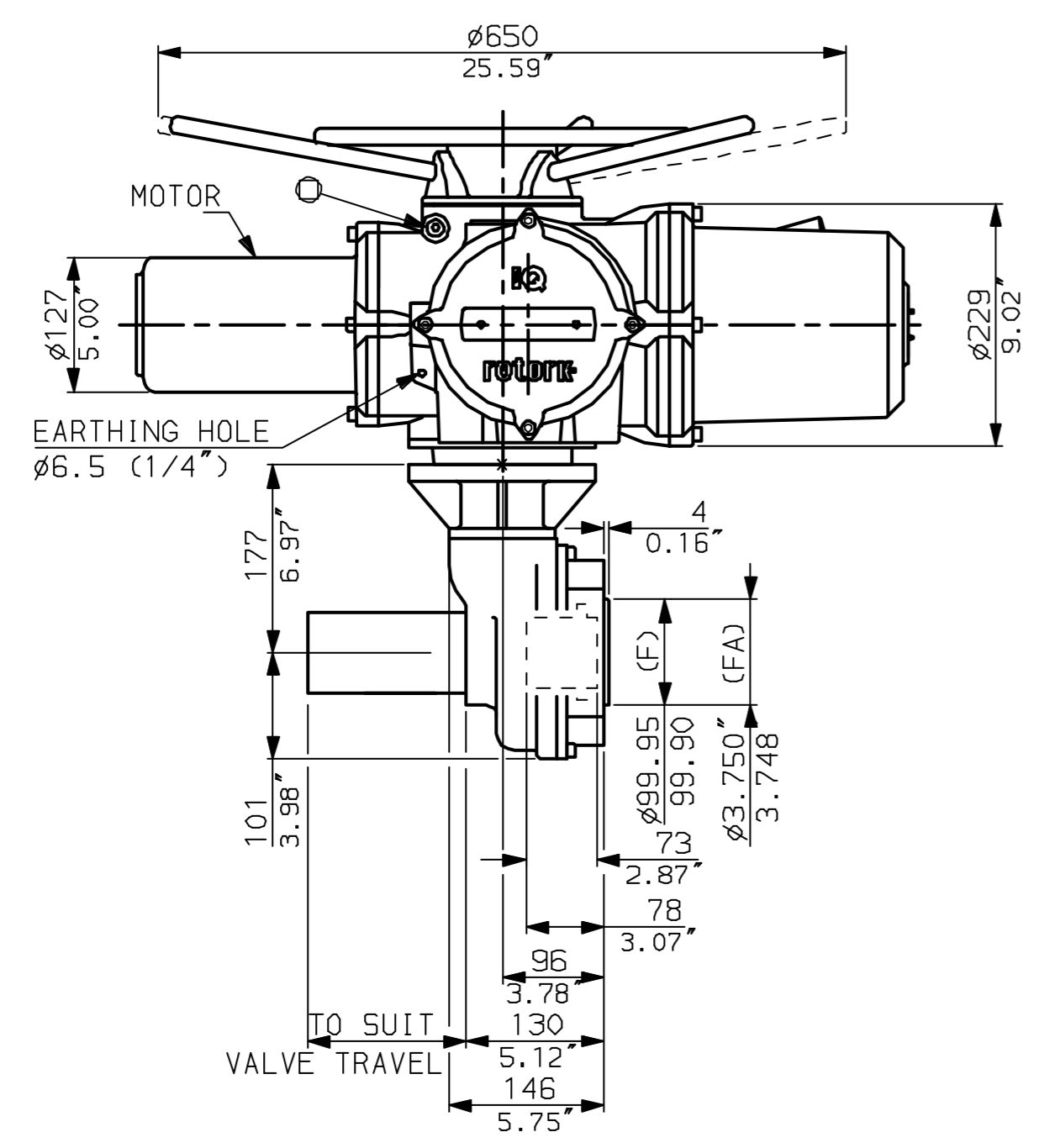
NOTES:

- DIMENSIONS WITH '*' INDICATE COVER REMOVAL ALLOWANCE
- NETT WEIGHT = 72kg (158lbs)
- \odot = OIL FILLER/DRAIN PLUG
- THE INTERFACE PROVIDED FOR MOUNTING THE ACTUATOR OR SECOND STAGE GEARBOX ONTO THE VALVE SHOULD CONFORM TO GOOD ENGINEERING PRACTICES, ENSURING ADEQUATELY TOLERANCED LIMITS FOR PARALLELISM, PERPENDICULARITY AND CONCENTRICITY.

CONDUIT ENTRIES (N.T.S)

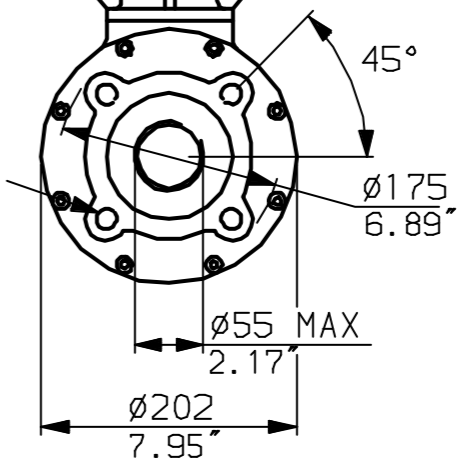


Nos.1 & 3 TAPPED 1" NPT
 No.2 TAPPED 1 1/2" NPT
 STD ALTERNATIVES IF SPECIFIED
 2 X M25, 1 X M40
 2 X PG16, 1 X PG29



"F" version
 4 HOLES TAPPED M16x20 DP EQUI-SPACED ON A 140 PCD (ISO5210 F14).

"FA" version
 4 HOLES TAPPED 5/8"UNC x0.80"dp EQUI-SPACED ON 5.5"PCD (MSS SP102-FA14).



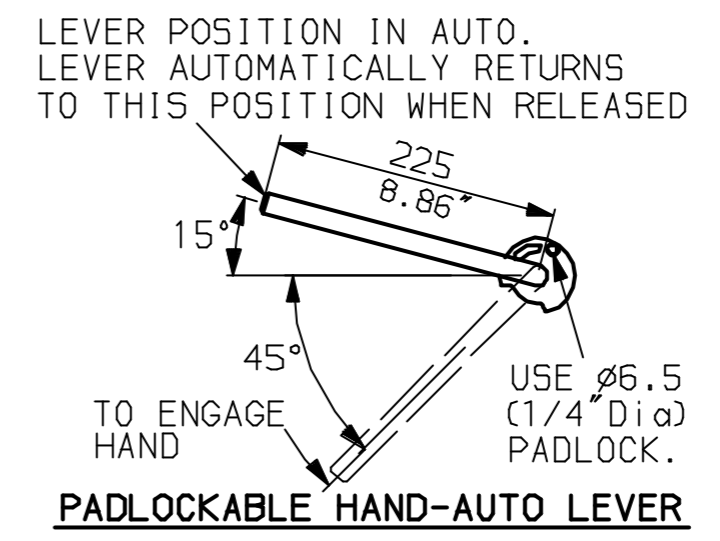
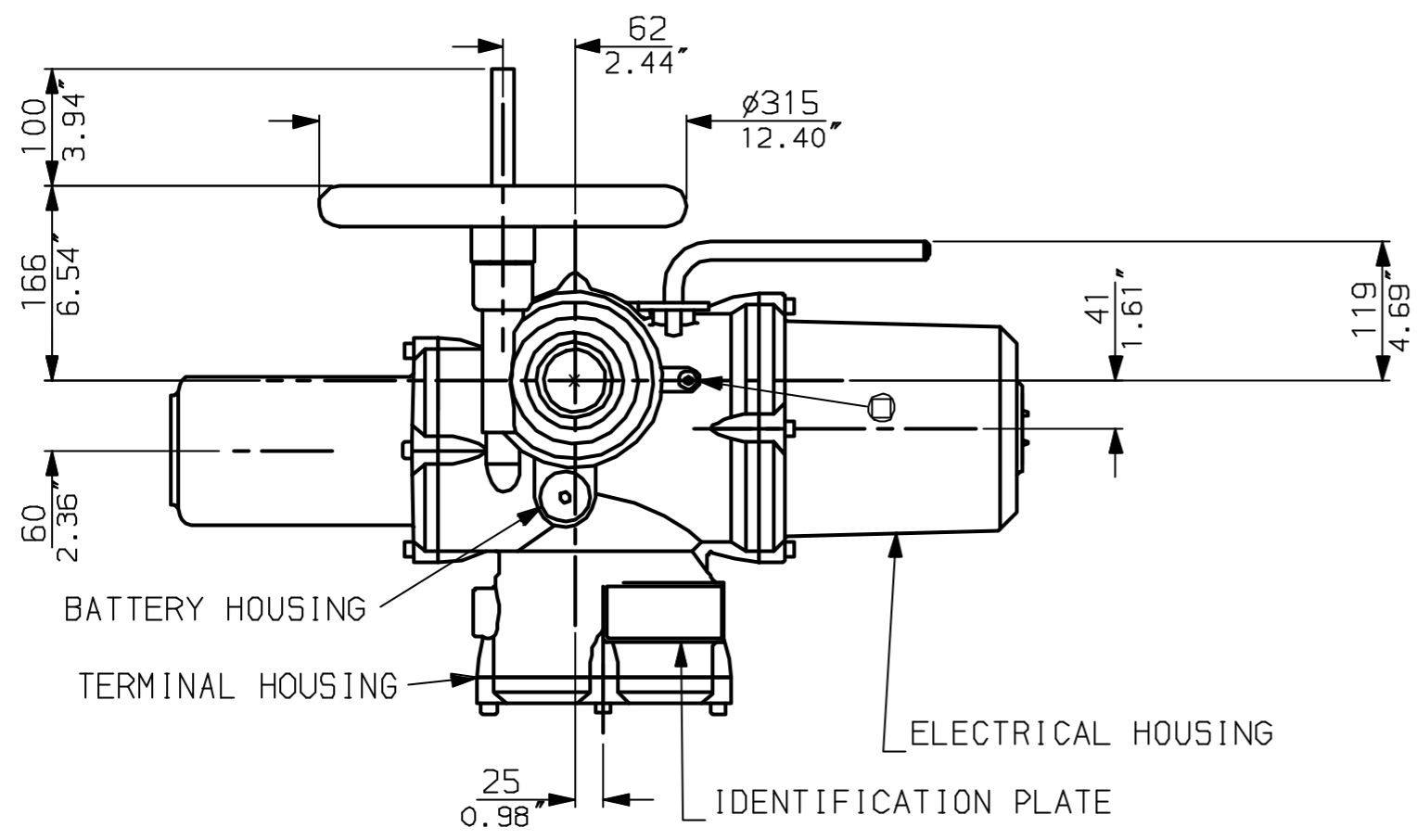
G
F
E
D
C
B
A

1 | 2 | 3 | 4 | 5 | 6 | 7 | 8 | 9 | 10

 www.rotork.com	Rotork Controls Ltd. Bath England, BA1 3JQ. (Phone 01225-733200)	Title IQ20, 25 (+IQM20, 25+IQS20), THW, IB5, STANDARD DIMENSIONAL DATA
	Rotork Controls Inc. Rochester, NY 14624 (Phone 585-328-1550)	Drawn CAD Checked PRE Ref Data Sheet
	Date April 04 Job No IQ2THW_IB5	

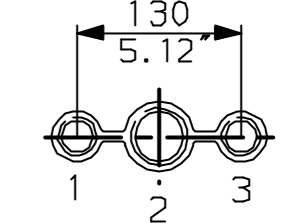
01	First Issue.
Scale	1:6 THIRD ANGLE PROJECTION
Drawing Number	IQ2THW_IB5

G
F
E
D
C
B
A

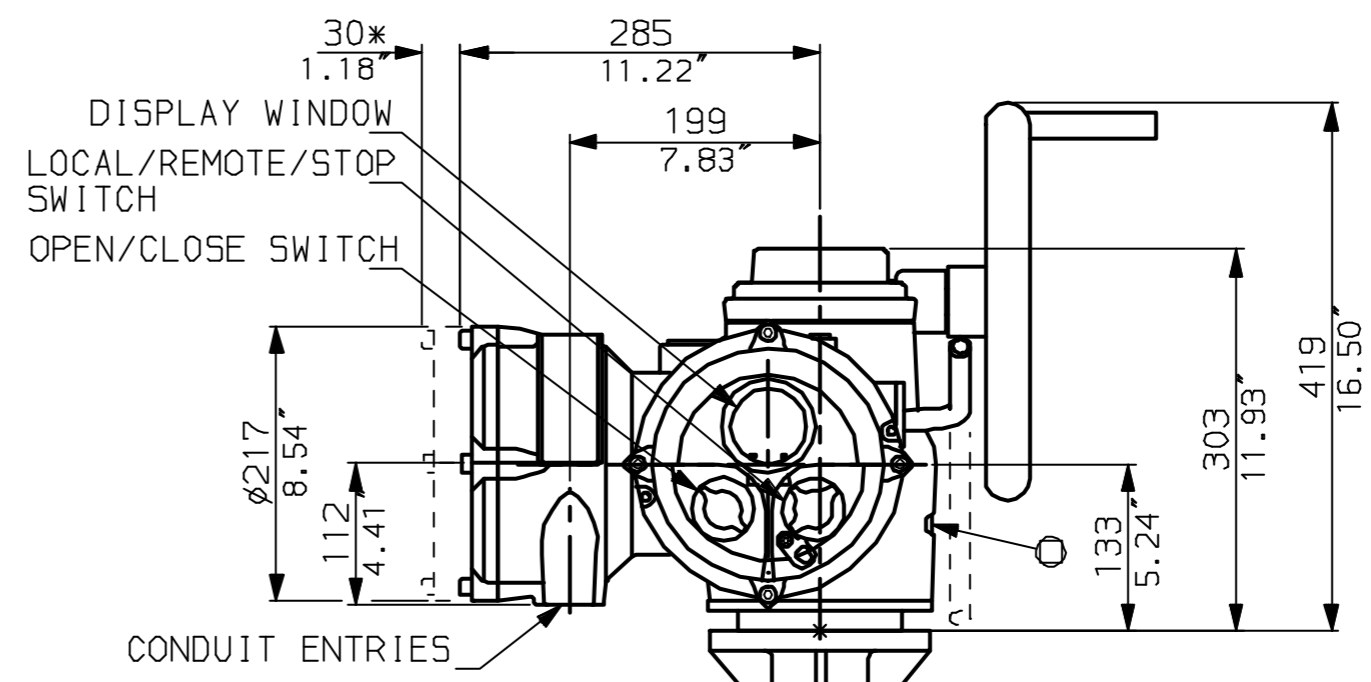
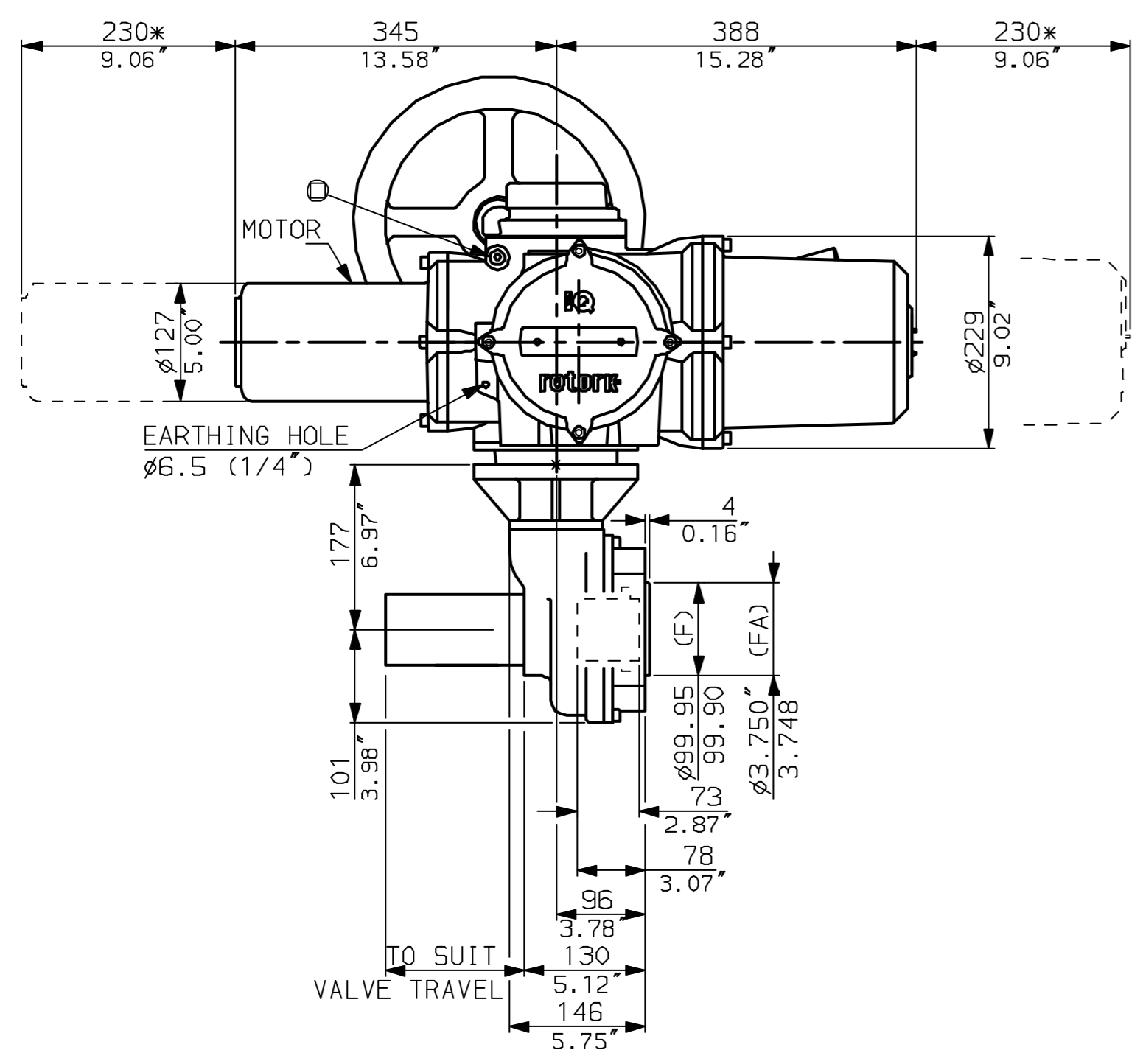


NOTES:
 * DIMENSIONS WITH '*' INDICATE COVER REMOVAL ALLOWANCE
 : NETT WEIGHT = 72kg (158lbs)
 : ϕ = OIL FILLER/DRAIN PLUG
 : THE INTERFACE PROVIDED FOR MOUNTING THE ACTUATOR OR SECOND STAGE GEARBOX ONTO THE VALVE SHOULD CONFORM TO GOOD ENGINEERING PRACTICES, ENSURING ADEQUATELY TOLERANCED LIMITS FOR PARALLELISM, PERPENDICULARITY AND CONCENTRICITY.

CONDUIT ENTRIES (N.T.S)

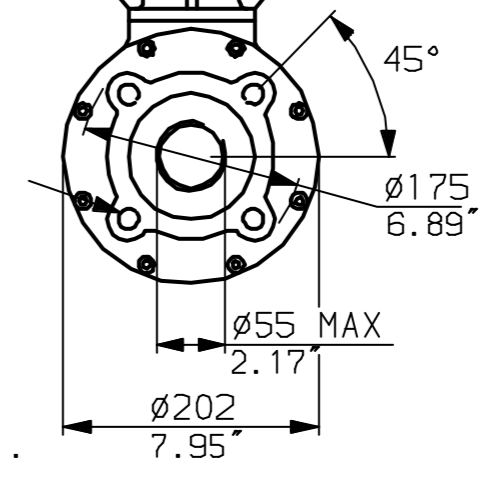


Nos.1 & 3 TAPPED 1" NPT
 No.2 TAPPED 1 1/2" NPT
 STD ALTERNATIVES IF SPECIFIED
 2 X M25, 1 X M40
 2 X PG16, 1 X PG29



"F" version
 4 HOLES TAPPED M16x20 DP
 EQUI-SPACED ON A 140 PCD
 (1S05210 F14).

"FA" version
 4 HOLES TAPPED 5/8" UNC
 x0.80" dp EQUI-SPACED ON
 5.5" PCD (MSS SP102-FA14).



Rotork Controls Ltd.
 Bath England, BA1 3JQ.
 (Phone 01225-733200)
 Rotork Controls Inc.
 Rochester, NY 14624
 (Phone 585-328-1550)

Title IQ20, 25 (+IQM20, 25+IQS20), SHW, IB5,		
STANDARD DIMENSIONAL DATA		
Drawn CAD	Checked PRE	Ref Data Sheet
Date April 04	Job No	IQ25HW_IB5

01	First Issue.
Scale	1:6 THIRD ANGLE PROJECTION
Drawing Number	IQ25HW_IB5

1 | 2 | 3 | 4 | 5 | 6 | 7 | 8 | 9 | 10