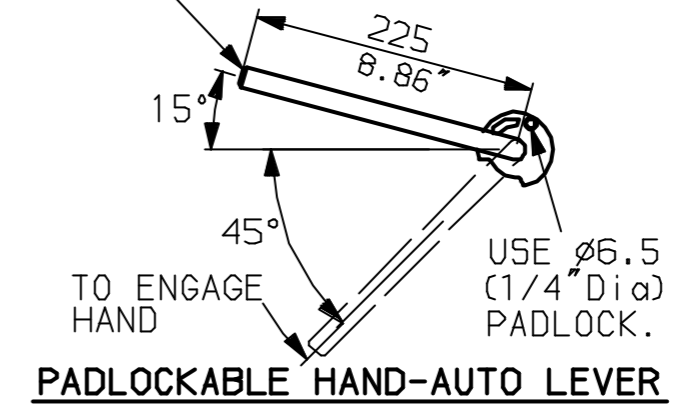
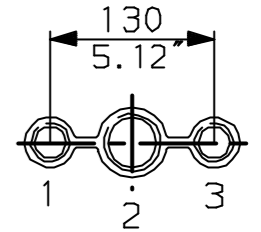


LEVER POSITION IN AUTO.  
LEVER AUTOMATICALLY RETURNS  
TO THIS POSITION WHEN RELEASED

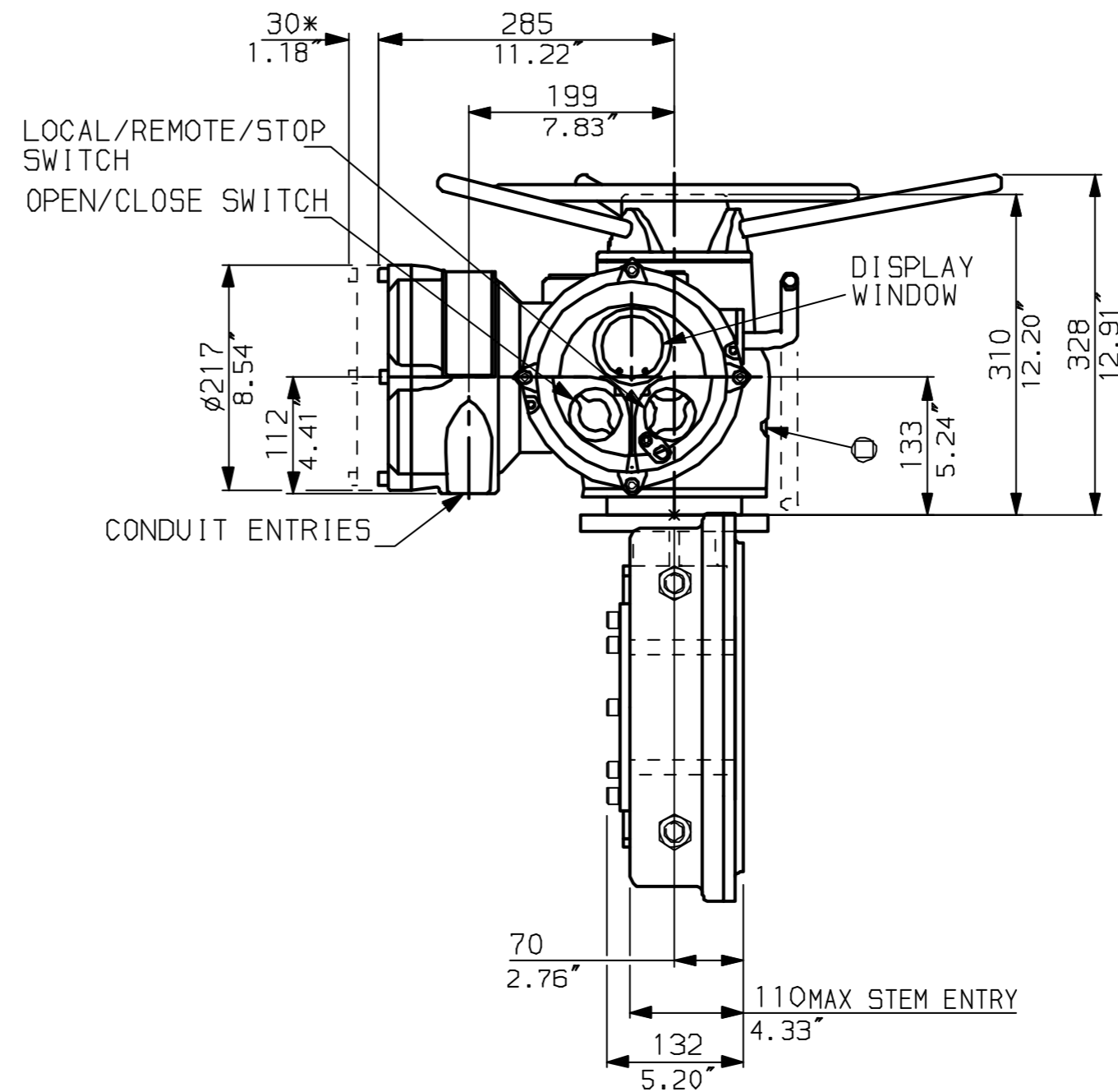
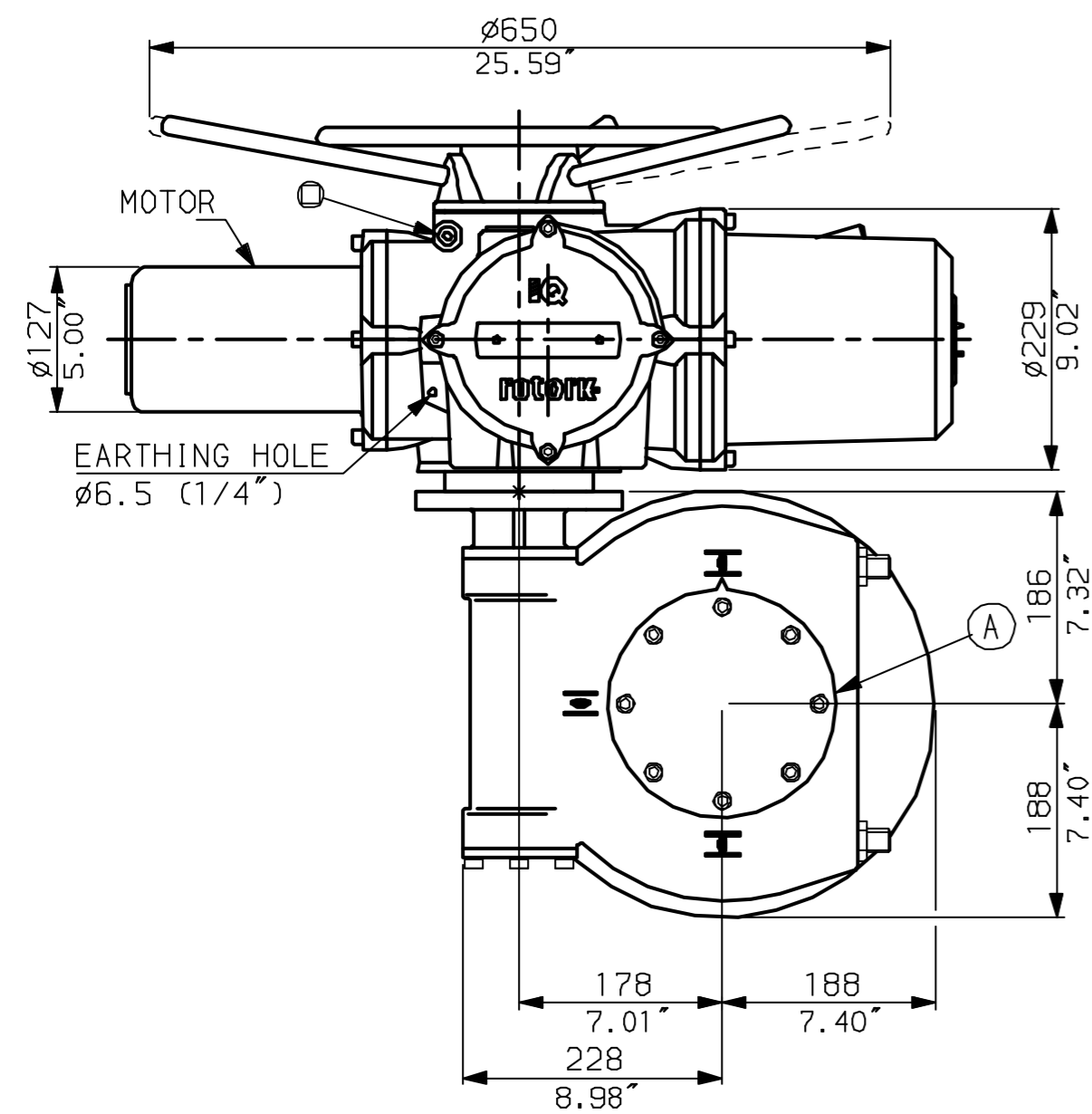


NOTES:  
DIMENSIONS WITH '\*' INDICATE  
COVER REMOVAL ALLOWANCE  
NETT WEIGHT = 120kg (264lbs)  
⊙ = OIL FILLER/DRAIN PLUG  
THE INTERFACE PROVIDED FOR MOUNTING THE  
ACTUATOR OR SECOND STAGE GEARBOX ONTO THE  
VALVE SHOULD CONFORM TO GOOD ENGINEERING  
PRACTICES, ENSURING ADEQUATELY TOLERANCED  
LIMITS FOR PARALLELISM, PERPENDICULARITY  
AND CONCENTRICITY.

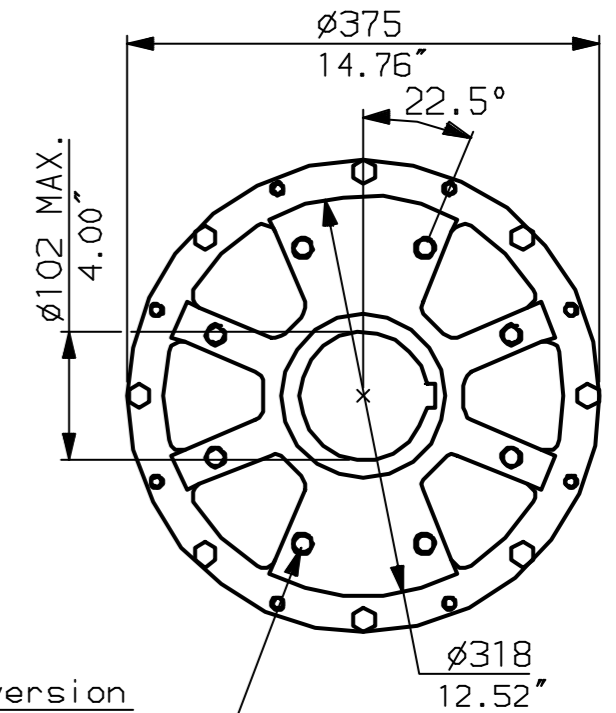
**CONDUIT ENTRIES** (N.T.S)



Nos.1 & 3 TAPPED 1" NPT  
No.2 TAPPED 1 1/2" NPT  
STD ALTERNATIVES IF SPECIFIED  
2 X M25, 1 X M40  
2 X PG16, 1 X PG29



N.B. KEYWAY POS. CAN BE MOVED  
90 OR 180° BY REMOVING 8 SCREWS  
MARKED (A) AND ROTATING OUTPUT  
SLEEVE.



"F" version  
8 HOLES TAPPED M16 x 16 DP  
EQUI-SPACED AS SHOWN ON A  
254 PCD (ISO 5211-F25).  
"FA" version  
8 HOLES TAPPED 5/8" UNC x 0.63" dp  
EQUI-SPACED AS SHOWN ON A  
10" PCD (MSS SP101-FA25).

**rotork**  
www.rotork.com

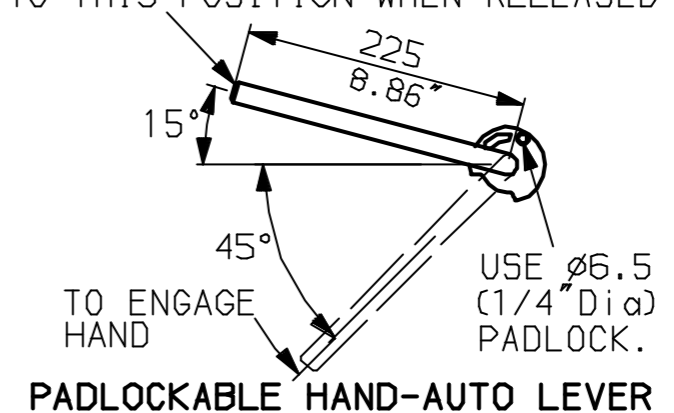
Rotork Controls Ltd.  
Bath England, BA1 3JQ.  
(Phone 01225-733200)  
Rotork Controls Inc.  
Rochester, NY 14624  
(Phone 585-328-1550)

Title IQ20, 25 (+IQS20), THW, IW (MOW) 6 (+63),  
STANDARD DIMENSIONAL DATA  
Drawn CAD Checked PRE Ref Data Sheet  
Date April 04 Job No IQ2THW\_IW6

01 Issue	First Issue.
Scale	1:6 THIRD ANGLE PROJECTION
Drawing Number	IQ2THW_IW6

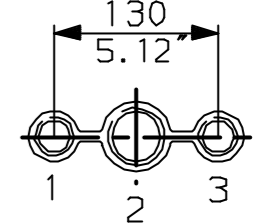
G  
F  
E  
D  
C  
B  
A

LEVER POSITION IN AUTO.  
LEVER AUTOMATICALLY RETURNS  
TO THIS POSITION WHEN RELEASED

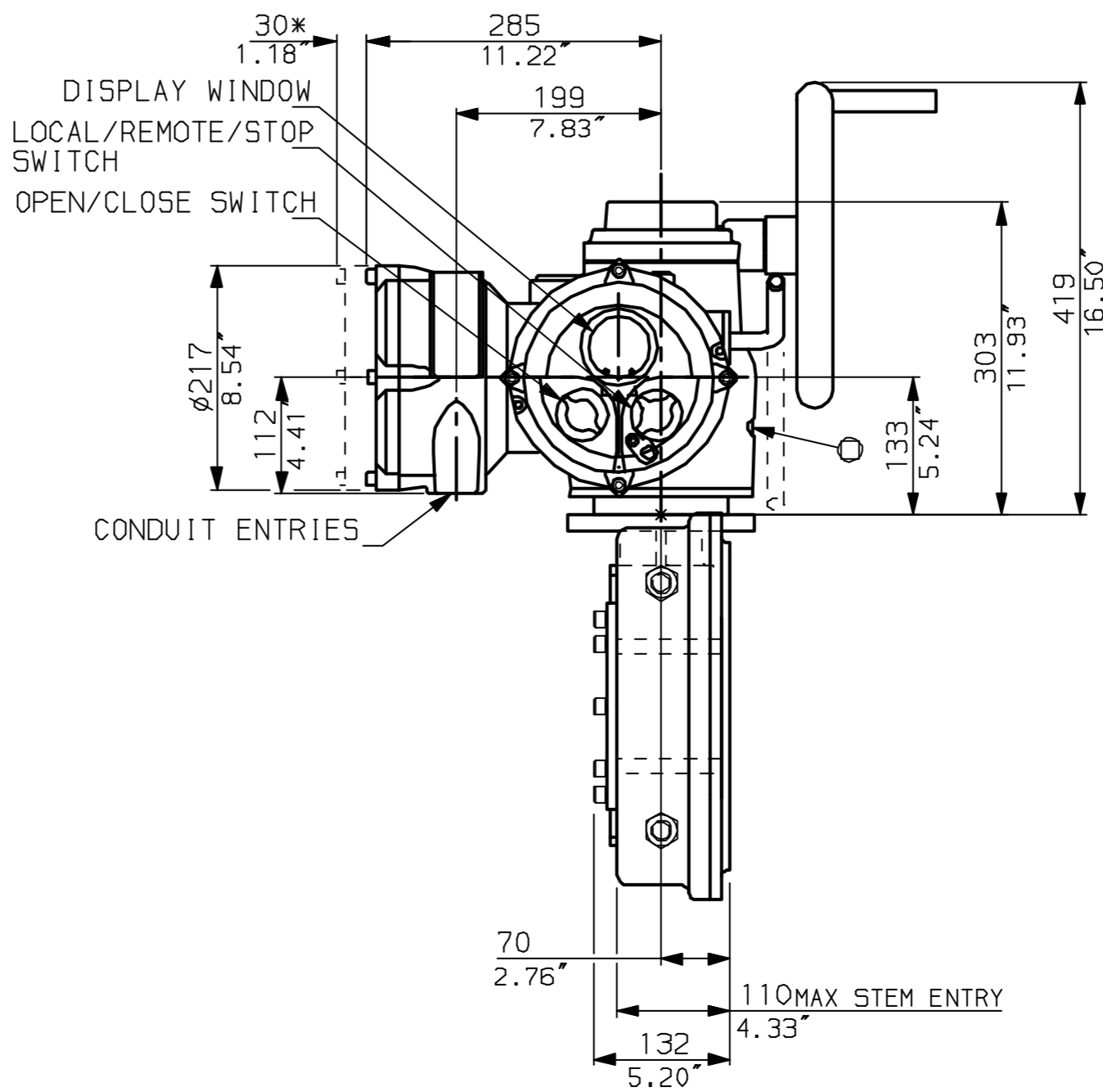
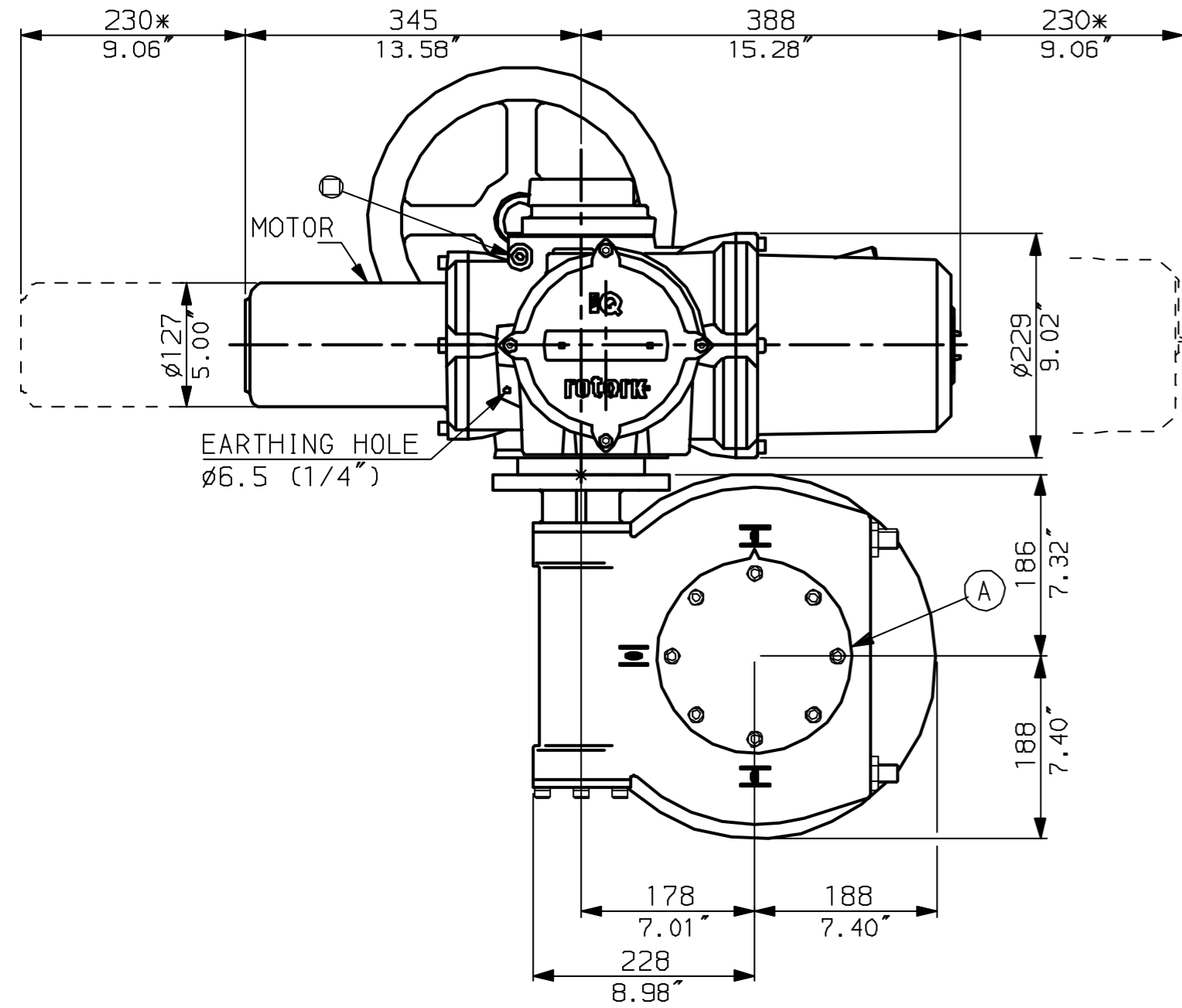
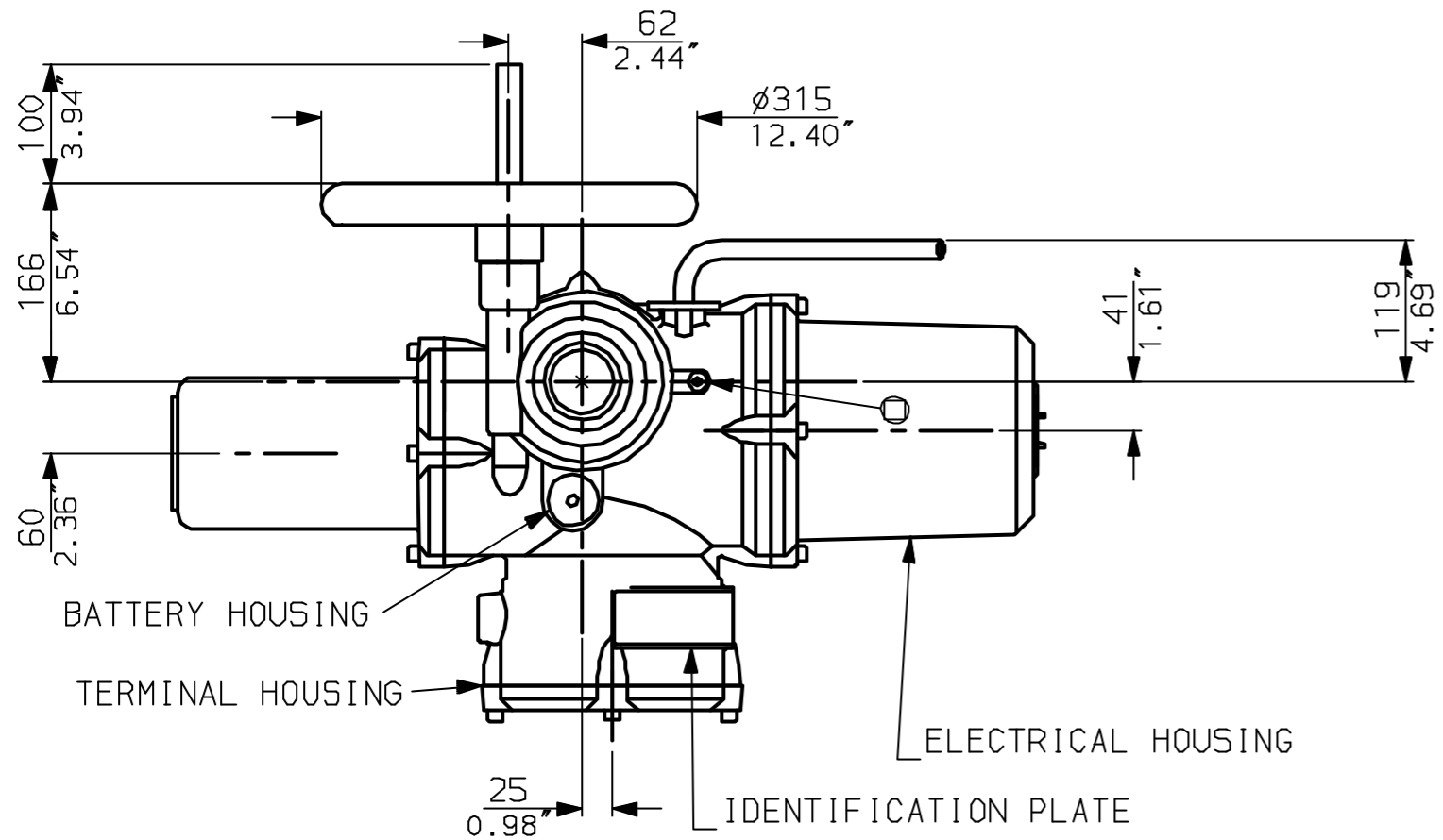


NOTES:  
DIMENSIONS WITH '\*' INDICATE  
COVER REMOVAL ALLOWANCE  
NETT WEIGHT = 120kg (264lbs)  
OIL FILLER/DRAIN PLUG  
THE INTERFACE PROVIDED FOR MOUNTING THE  
ACTUATOR OR SECOND STAGE GEARBOX ONTO THE  
VALVE SHOULD CONFORM TO GOOD ENGINEERING  
PRACTICES, ENSURING ADEQUATELY TOLERANCED  
LIMITS FOR PARALLELISM, PERPENDICULARITY  
AND CONCENTRICITY.

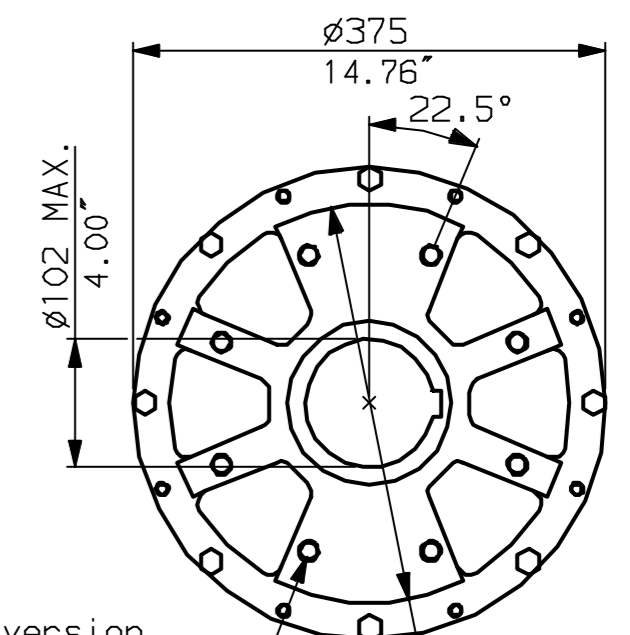
**CONDUIT ENTRIES** (N.T.S)



Nos.1 & 3 TAPPED 1" NPT  
No.2 TAPPED 1 1/2" NPT  
STD ALTERNATIVES IF SPECIFIED  
2 X M25, 1 X M40  
2 X PG16, 1 X PG29



N.B. KEYWAY POS. CAN BE MOVED  
90 OR 180° BY REMOVING 8 SCREWS  
MARKED (A) AND ROTATING OUTPUT  
SLEEVE.



"F" version  
8 HOLES TAPPED M16 x 16 DP  
EQUI-SPACED AS SHOWN ON A  
254 PCD (ISO 5211-F25).  
"FA" version  
8 HOLES TAPPED 5/8" UNC x 0.63" dp  
EQUI-SPACED AS SHOWN ON A  
10" PCD (MSS 5P101-FA25).



Rotork Controls Ltd.  
Bath England, BA1 3JQ.  
(Phone 01225-733200)  
Rotork Controls Inc.  
Rochester, NY 14624  
(Phone 585-328-1550)

Title IQ20, 25 (+IQ520), SHW, IW (MOW) 6(+63),		
STANDARD DIMENSIONAL DATA		
Drawn CAD	Checked PRE	Ref Data Sheet
Date April 04	Job No IQ25HW_IW6	

01	First Issue.
Scale	1:6 THIRD ANGLE PROJECTION
Drawing Number	IQ25HW_IW6

1 | 2 | 3 | 4 | 5 | 6 | 7 | 8 | 9 | 10