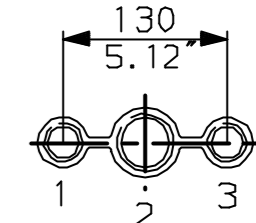
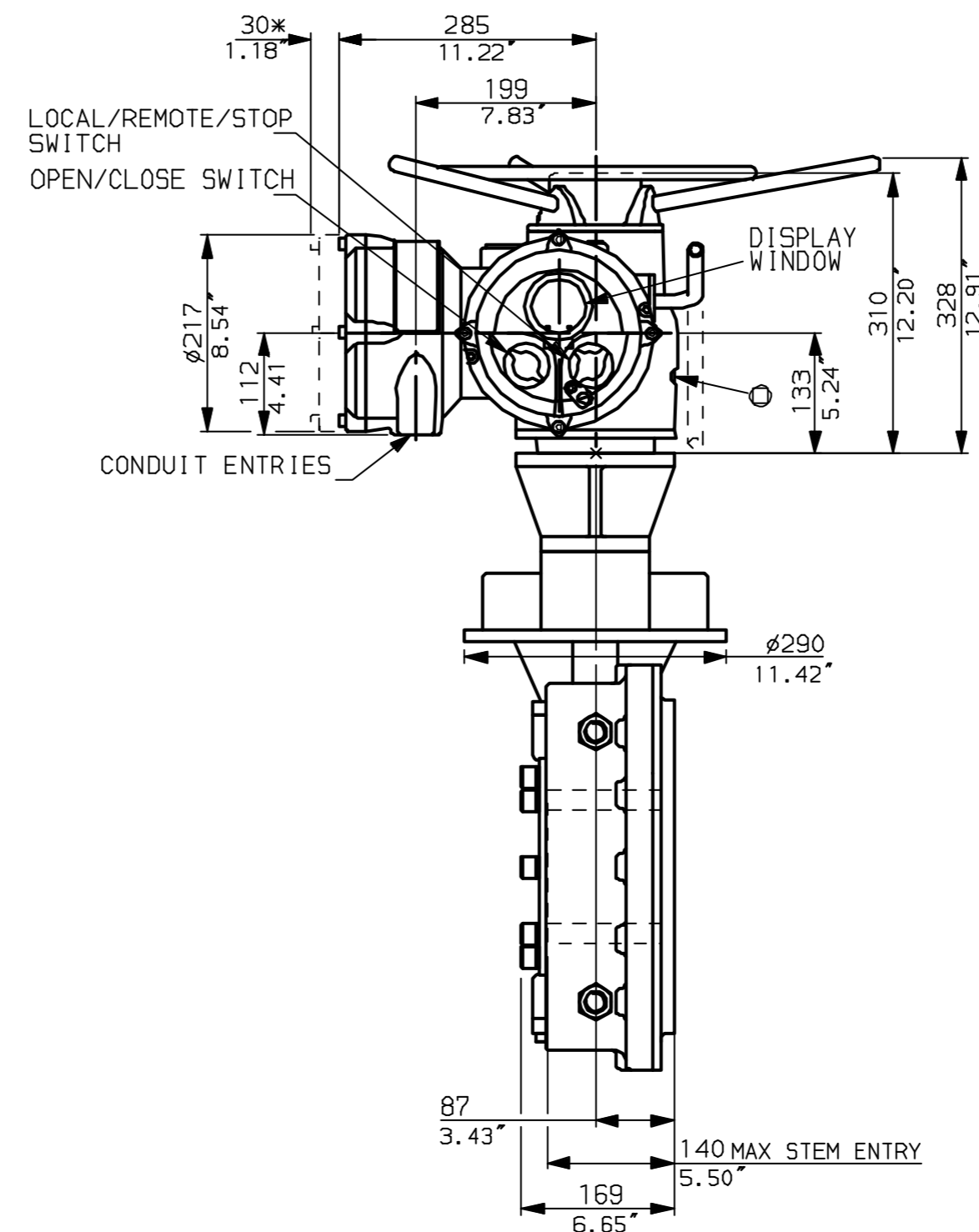
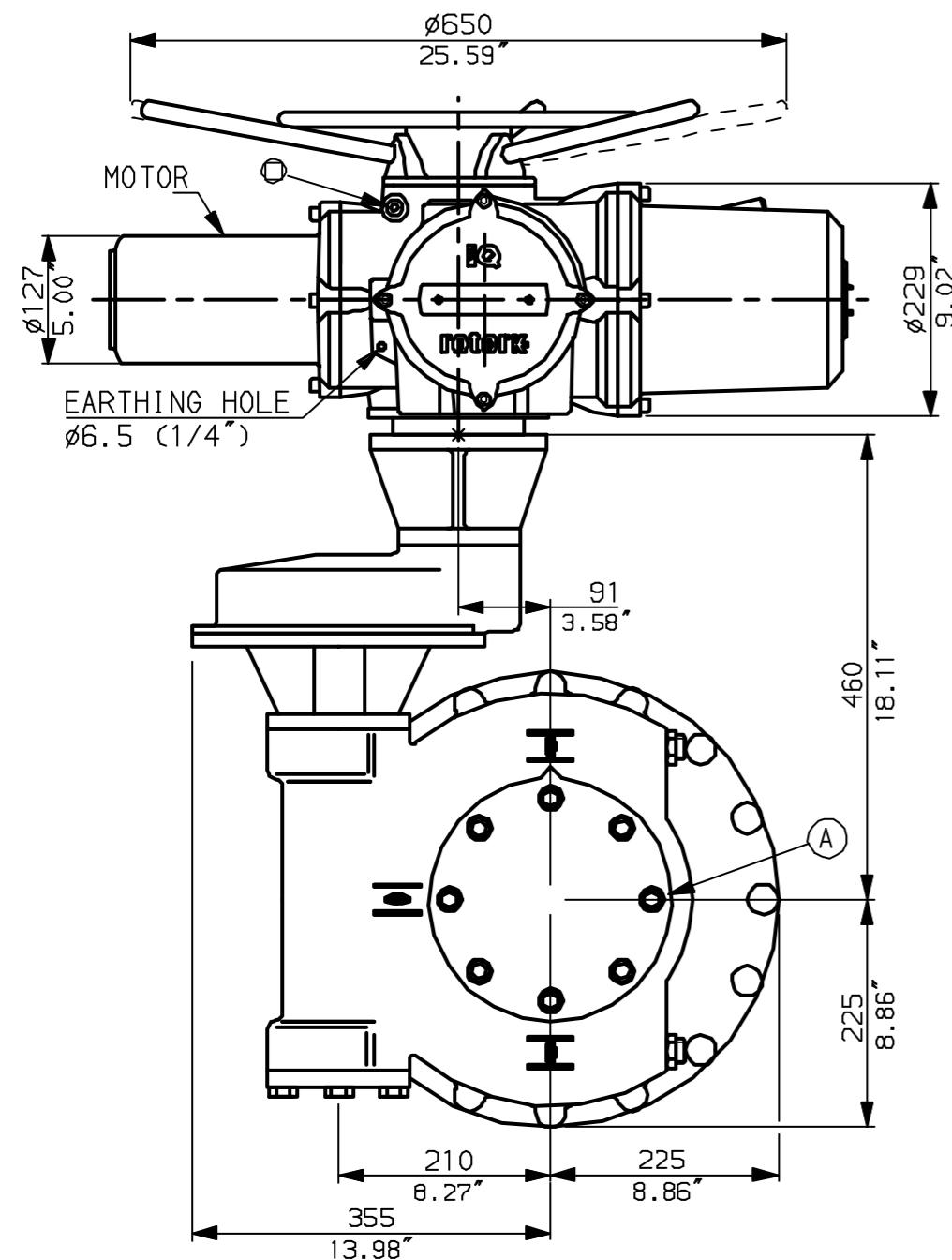


NOTES:  
 \* DIMENSIONS WITH '\*' INDICATE COVER REMOVAL ALLOWANCE  
 : NETT WEIGHT = 204kg (449lbs)  
 : = OIL FILLER/DRAIN PLUG  
 : THE INTERFACE PROVIDED FOR MOUNTING THE ACTUATOR OR SECOND STAGE GEARBOX ONTO THE VALVE SHOULD CONFORM TO GOOD ENGINEERING PRACTICES, ENSURING ADEQUATELY TOLERANCED LIMITS FOR PARALLELISM, PERPENDICULARITY AND CONCENTRICITY.

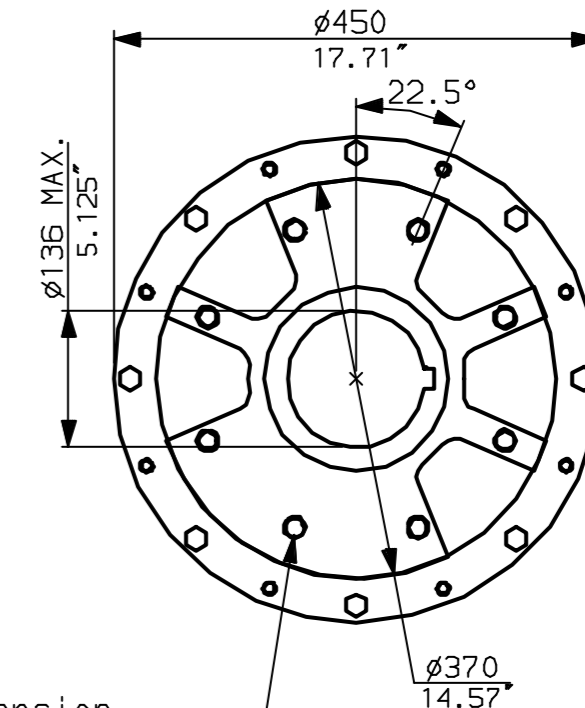
**CONDUIT ENTRIES** (N.T.S)



Nos.1 & 3 TAPPED 1" NPT  
 No.2 TAPPED 1 1/2" NPT  
 STD ALTERNATIVES IF SPECIFIED  
 2 X M25, 1 X M40  
 2 X PG16, 1 X PG29



N.B. KEYWAY POS. CAN BE MOVED 90 OR 180° BY REMOVING 8 SCREWS MARKED (A) AND ROTATING OUTPUT SLEEVE.



"F" version  
 8 HOLES TAPPED M20 x 24 DP  
 EQUI-SPACED AS SHOWN ON A  
 298 PCD (ISO 5211-F30).

"FA" version  
 8 HOLES TAPPED 3/4" UNC x 0.94" dp  
 EQUI-SPACED AS SHOWN ON A  
 11.75" PCD (MSS SP101-FA30).

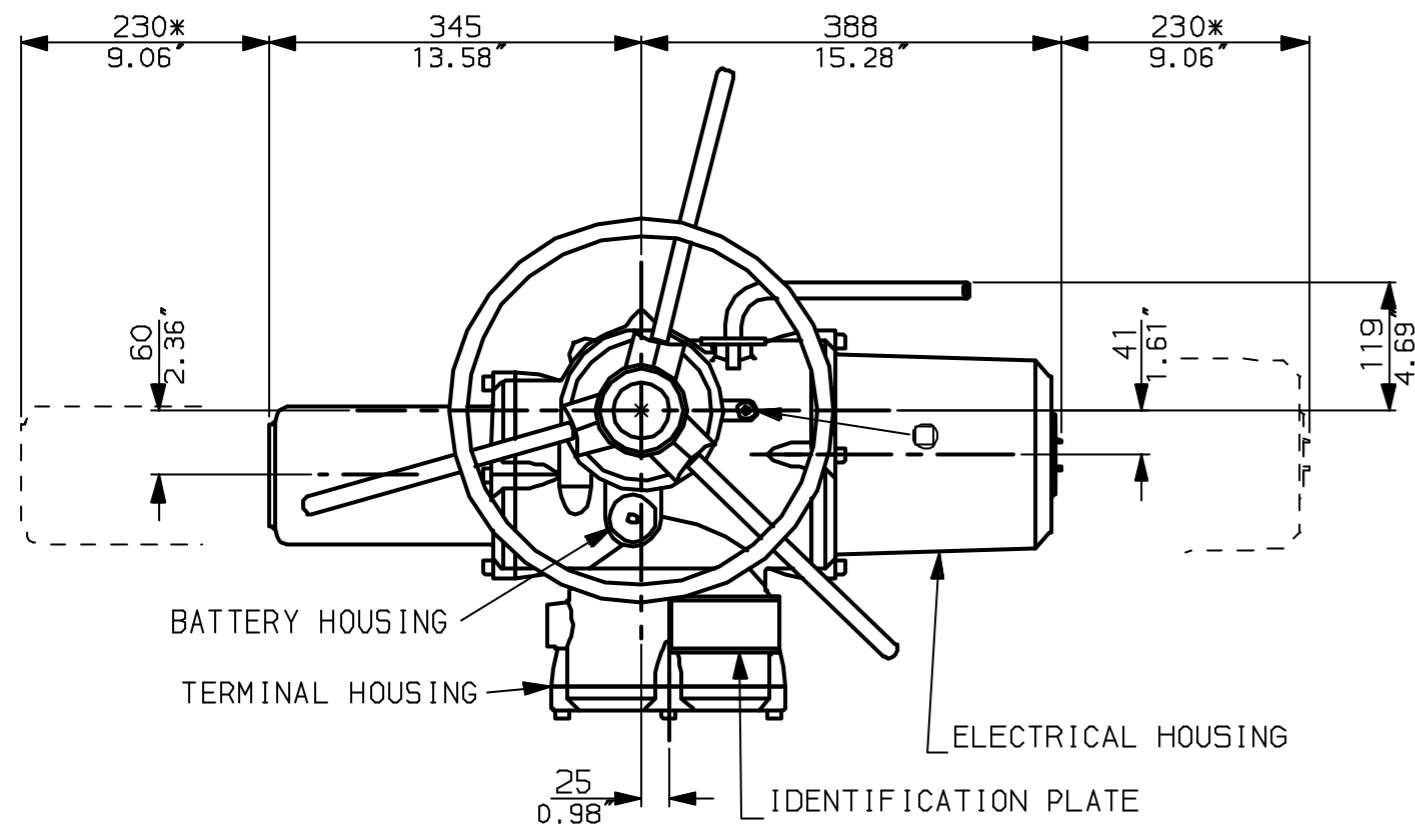
NOTE:  
 Gearbox is shown with LOW Ratio Input Reducer.  
 (ie Ratios 120, 180, 240, 360)  
 See Data Sheet with IW7Rh for HIGH ratio option.

**rotork**  
 www.rotork.com

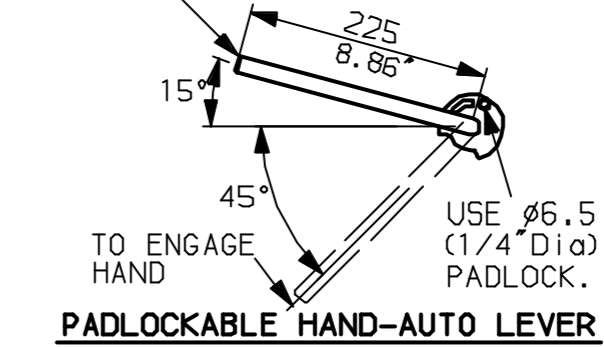
Rotork Controls Ltd.  
 Bath England, BA1 3JQ.  
 (Phone 01225-733200)  
 Rotork Controls Inc.  
 Rochester, NY 14624  
 (Phone 585-328-1550)

Title IQ20, 25 (+IQS20), THW, IW (MOW) 7 (+72) RL,		
STANDARD DIMENSIONAL DATA		
Drawn CAD	Checked PRE	Ref Data Sheet
Date April 04	Job No	IQ2THW_IW7RL

01	First Issue.
Scale	1:7 THIRD ANGLE PROJECTION
Drawing Number	IQ2THW_IW7RL

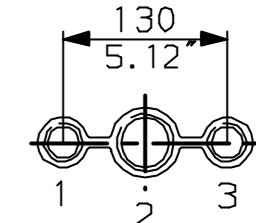


LEVER POSITION IN AUTO.  
LEVER AUTOMATICALLY RETURNS  
TO THIS POSITION WHEN RELEASED

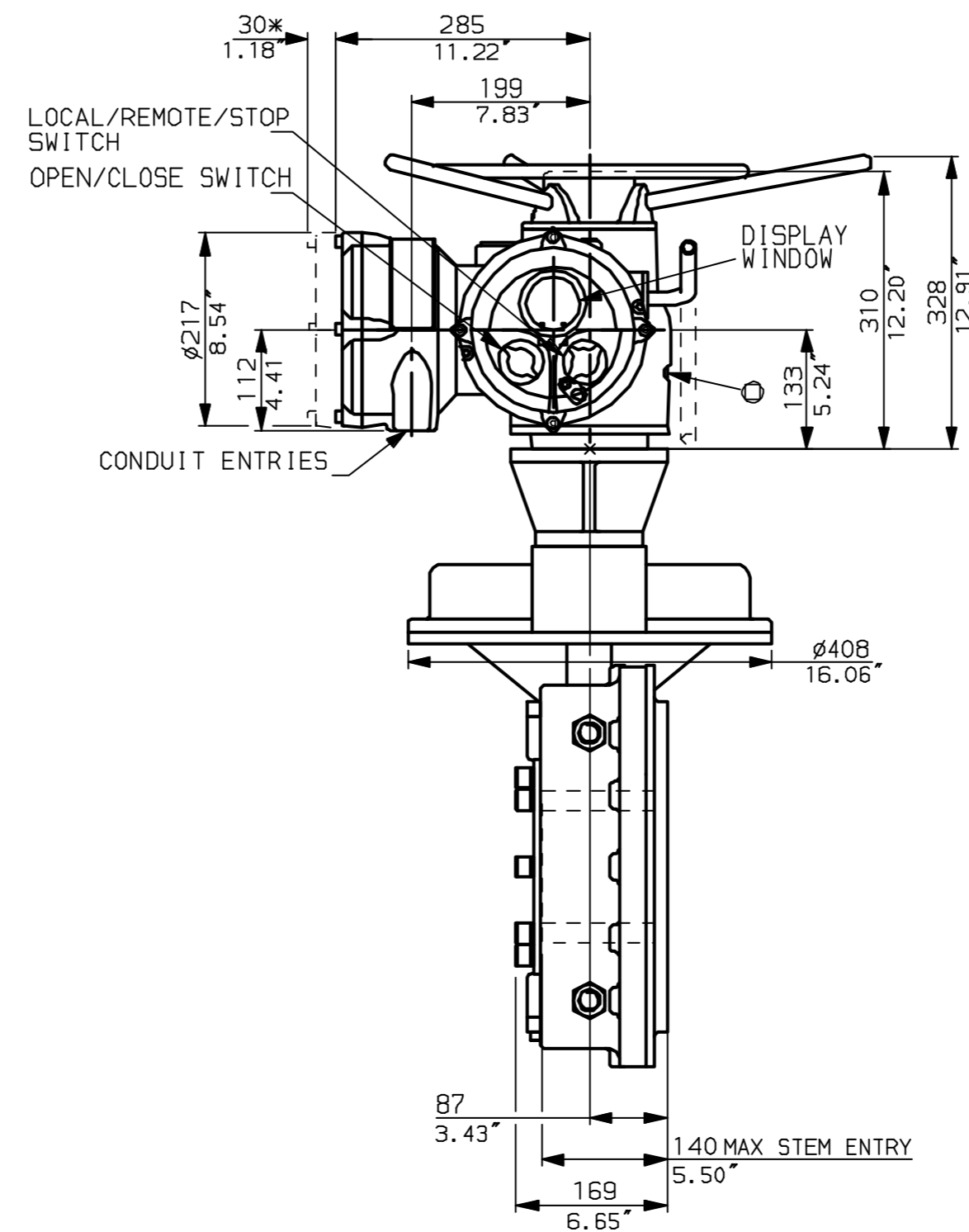
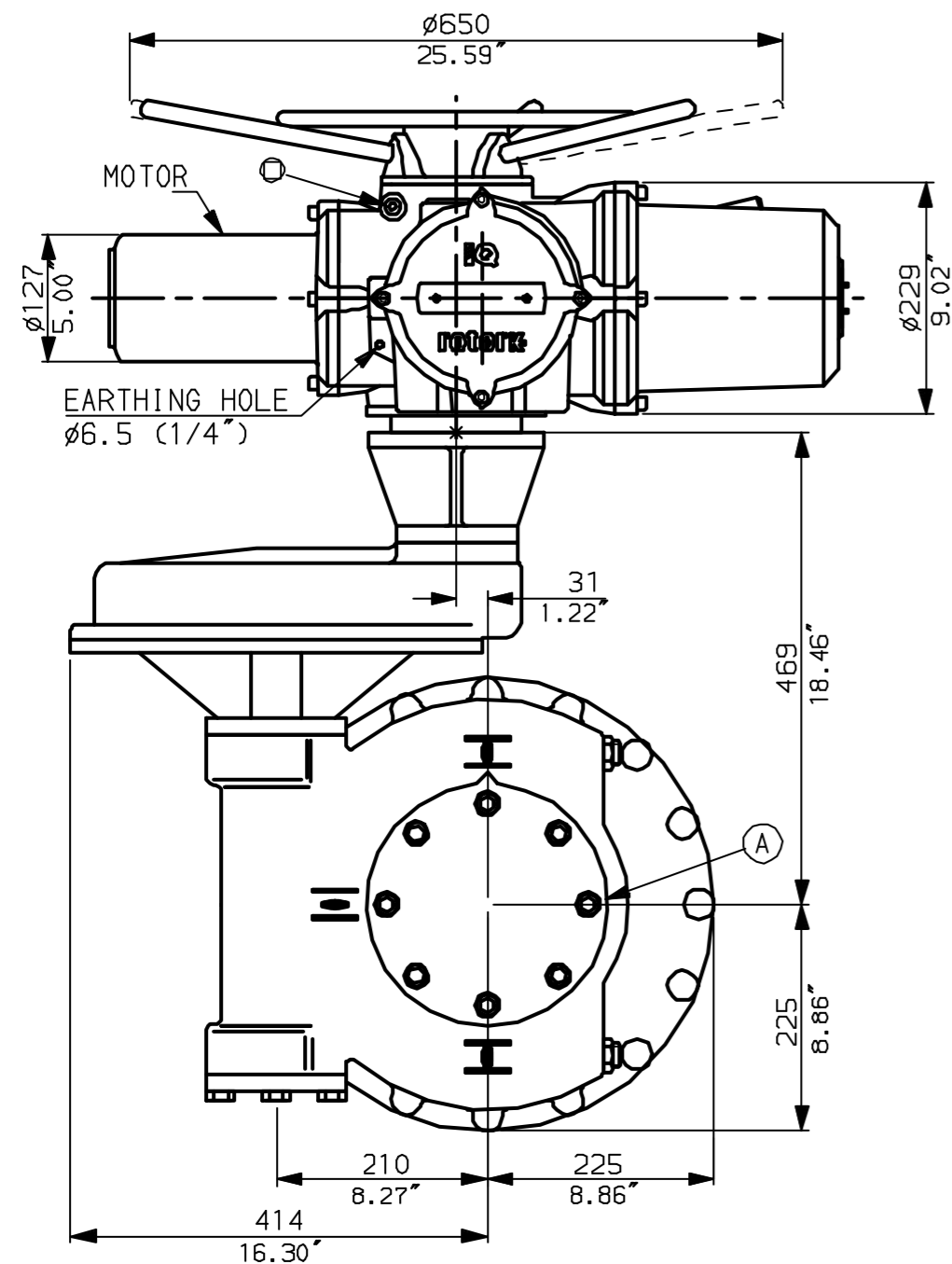


NOTES:  
DIMENSIONS WITH '\*' INDICATE COVER REMOVAL ALLOWANCE  
NETT WEIGHT = 214kg (471 lbs)  
OIL FILLER/DRAIN PLUG  
THE INTERFACE PROVIDED FOR MOUNTING THE ACTUATOR OR SECOND STAGE GEARBOX ONTO THE VALVE SHOULD CONFORM TO GOOD ENGINEERING PRACTICES, ENSURING ADEQUATELY TOLERANCED LIMITS FOR PARALLELISM, PERPENDICULARITY AND CONCENTRICITY.

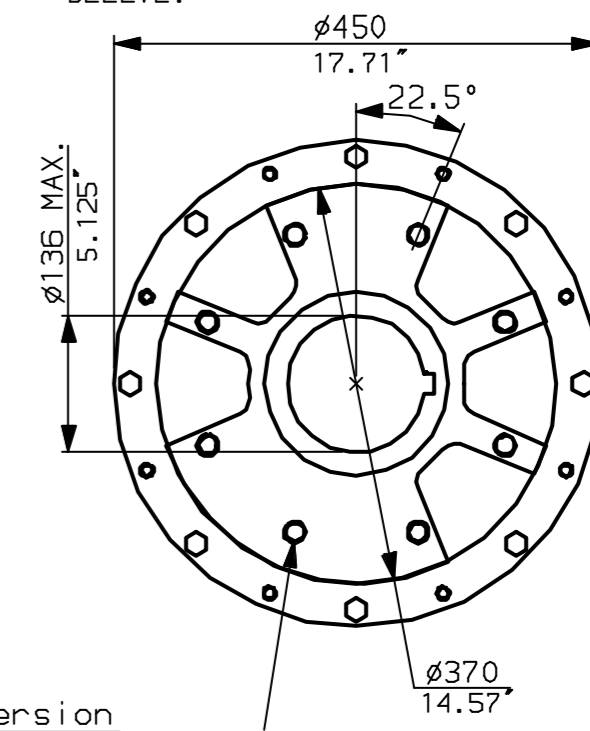
CONDUIT ENTRIES (N.T.S)



Nos.1 & 3 TAPPED 1" NPT  
No.2 TAPPED 1 1/2" NPT  
STD ALTERNATIVES IF SPECIFIED  
2 X M25, 1 X M40  
2 X PG16, 1 X PG29



N.B. KEYWAY POS. CAN BE MOVED 90 OR 180° BY REMOVING 8 SCREWS MARKED A AND ROTATING OUTPUT SLEEVE.



"F" version  
8 HOLES TAPPED M20 x 24 DP  
EQUI-SPACED AS SHOWN ON A  
298 PCD (ISO 5211-F30).

"FA" version  
8 HOLES TAPPED 3/4" UNC x 0.94" dp  
EQUI-SPACED AS SHOWN ON A  
11.75" PCD (MSS SP101-FA30).

NOTE:  
Gearbox is shown with HIGH Ratio Input Reducer.  
(ie Ratios 480,540,720)  
See Data Sheet with IW7RL for LOW ratio option.

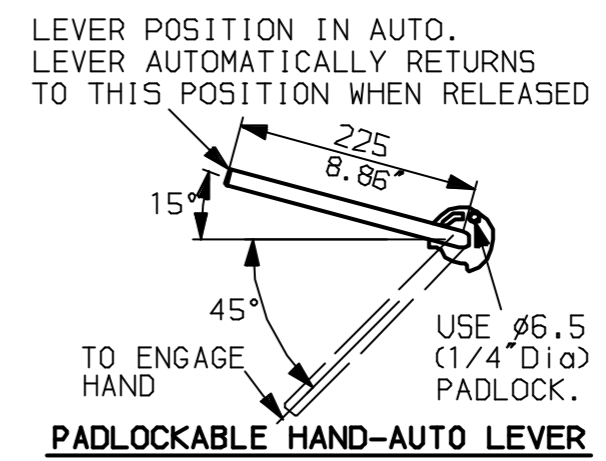
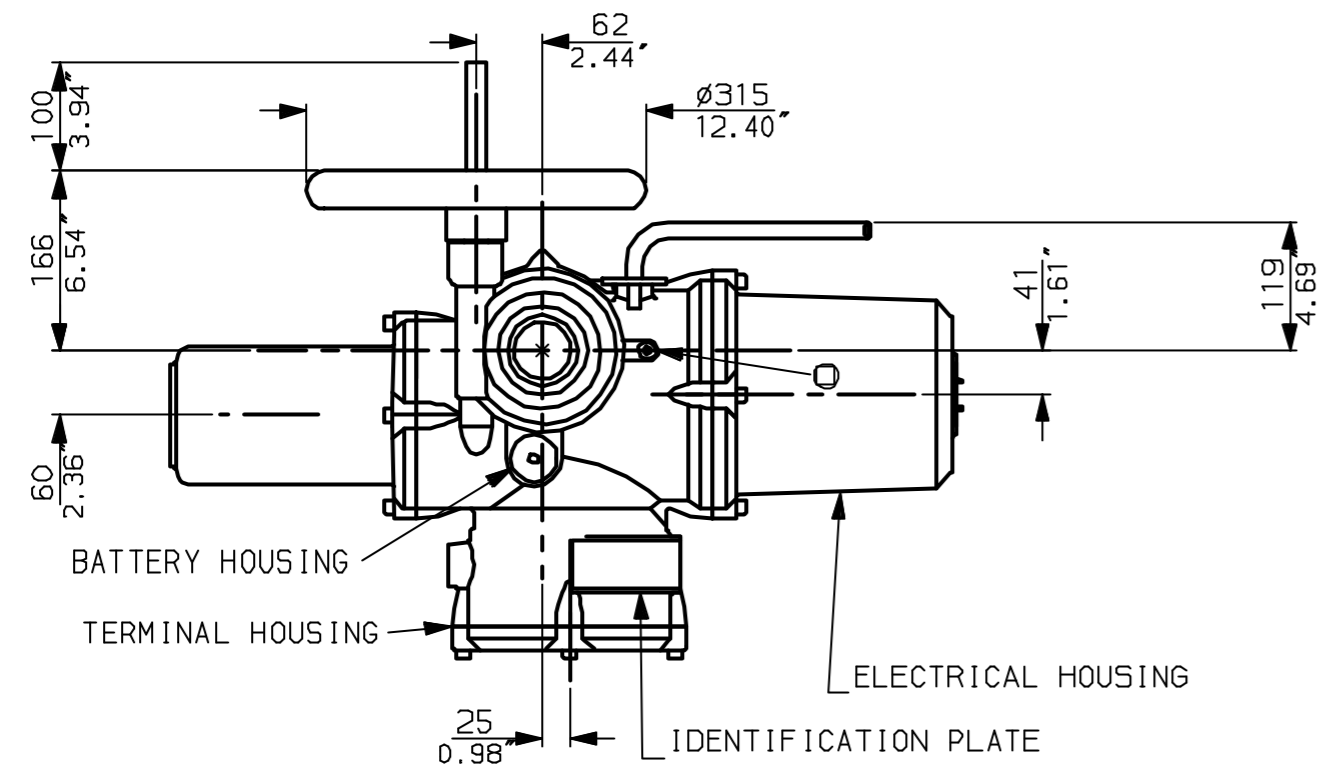
rotork  
www.rotork.com

Rotork Controls Ltd.  
Bath England, BA1 3JQ.  
(Phone 01225-733200)  
Rotork Controls Inc.  
Rochester, NY 14624  
(Phone 585-328-1550)

Title IQ20, 25 (+IQS20), THW, IW (MOW) 7 (+72) Rh,		
STANDARD DIMENSIONAL DATA		
Drawn CAD	Checked PRE	Ref Data Sheet
Date April 04	Job No	IQ2THW_IW7Rh

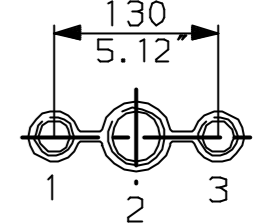
01	First Issue.
Scale	1:7 THIRD ANGLE PROJECTION
Drawing Number	IQ2THW_IW7Rh

G  
F  
E  
D  
C  
B  
A

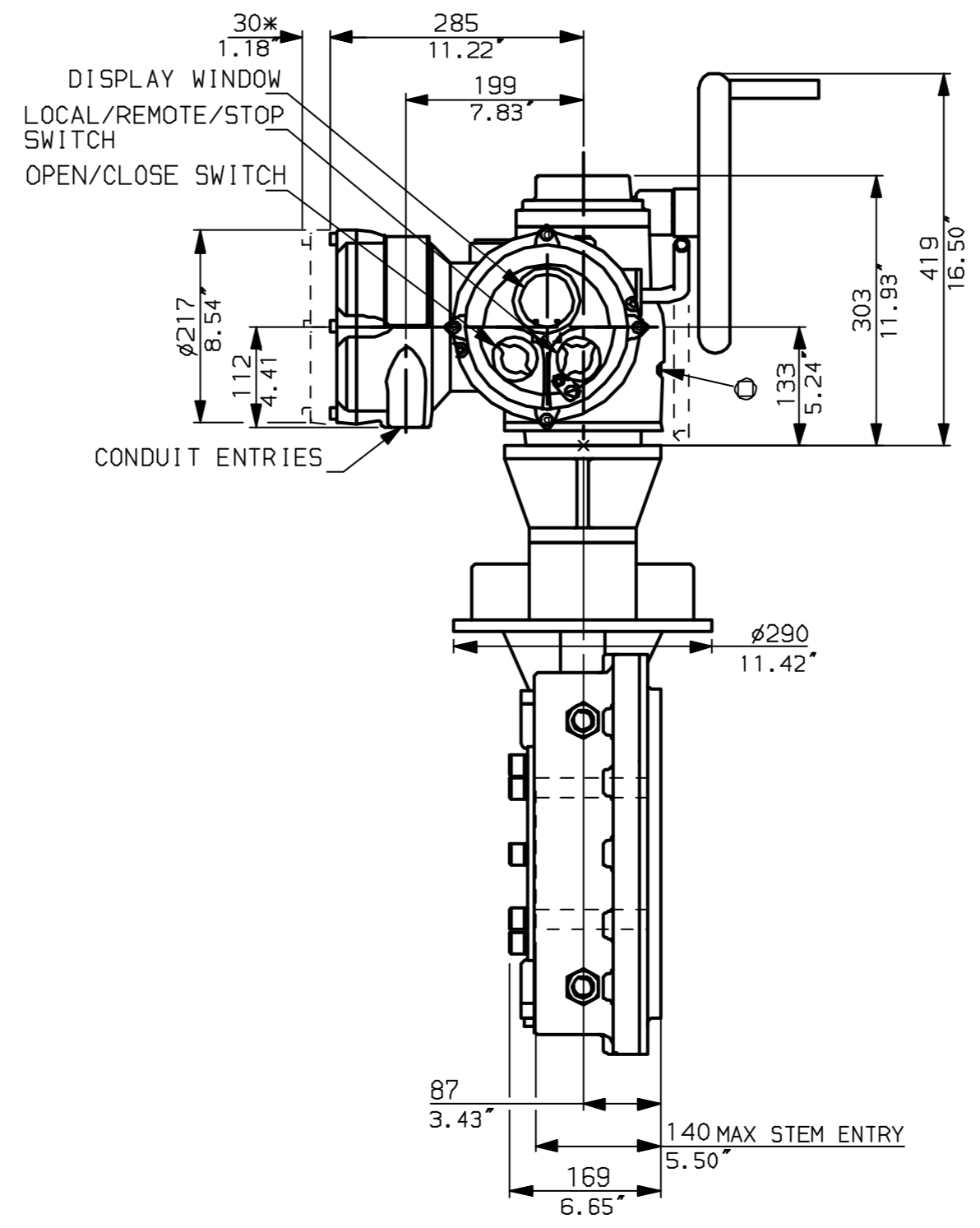
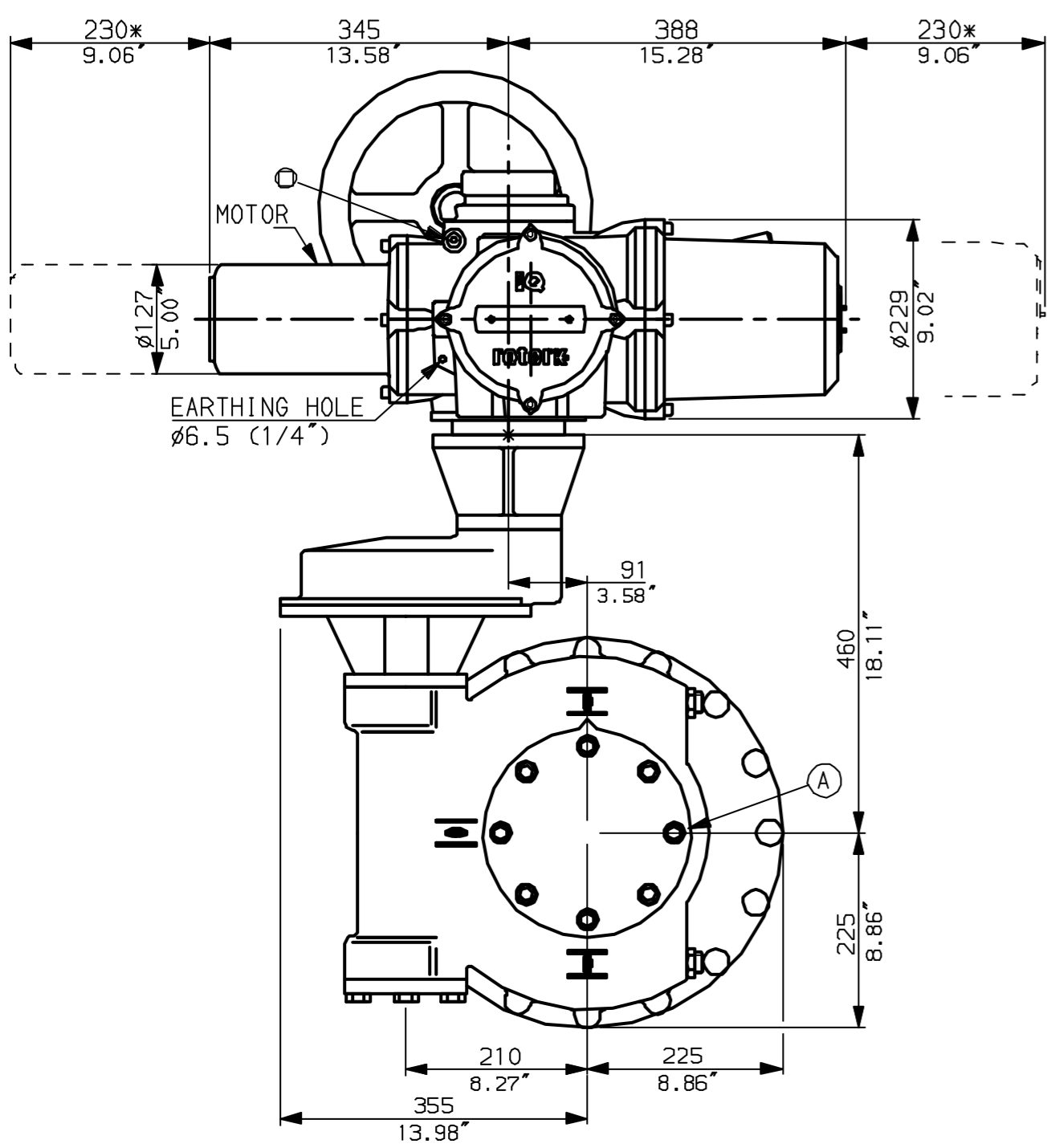


NOTES:  
 DIMENSIONS WITH '\*' INDICATE COVER REMOVAL ALLOWANCE  
 NETT WEIGHT = 204kg (449lbs)  
 $\phi$  = OIL FILLER/DRAIN PLUG  
 THE INTERFACE PROVIDED FOR MOUNTING THE ACTUATOR OR SECOND STAGE GEARBOX ONTO THE VALVE SHOULD CONFORM TO GOOD ENGINEERING PRACTICES, ENSURING ADEQUATELY TOLERANCED LIMITS FOR PARALLELISM, PERPENDICULARITY AND CONCENTRICITY.

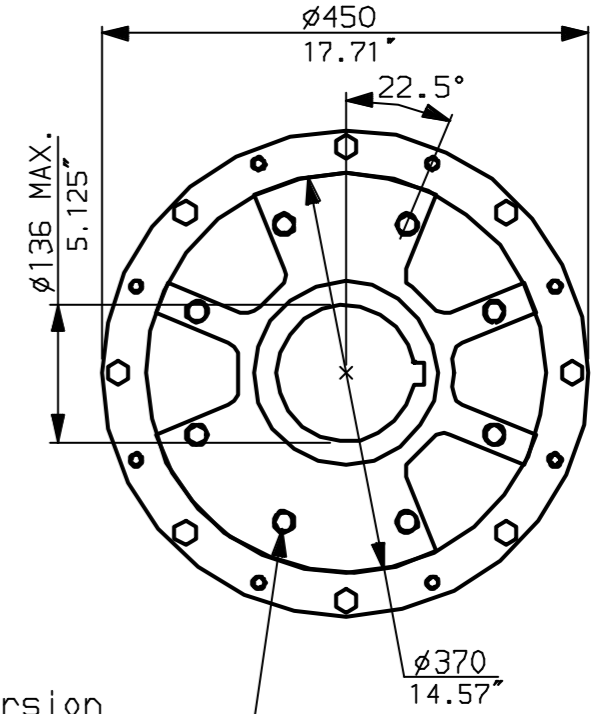
**CONDUIT ENTRIES** (N.T.S)



Nos.1 & 3 TAPPED 1" NPT  
 No.2 TAPPED 1 1/2" NPT  
 STD ALTERNATIVES IF SPECIFIED  
 2 X M25, 1 X M40  
 2 X PG16, 1 X PG29



N.B. KEYWAY POS. CAN BE MOVED 90 OR 180° BY REMOVING 8 SCREWS MARKED (A) AND ROTATING OUTPUT SLEEVE.



"F" version  
 8 HOLES TAPPED M20 x 24 DP  
 EQUI-SPACED AS SHOWN ON A  
 298 PCD (150 5211-F30).

"FA" version  
 8 HOLES TAPPED 3/4"UNCx0.94"dp  
 EQUI-SPACED AS SHOWN ON A  
 11.75" PCD (MSS SP101-FA30).



Rotork Controls Ltd.  
 Bath England, BA1 3JQ.  
 (Phone 01225-733200)

Rotork Controls Inc.  
 Rochester, NY 14624  
 (Phone 585-328-1550)

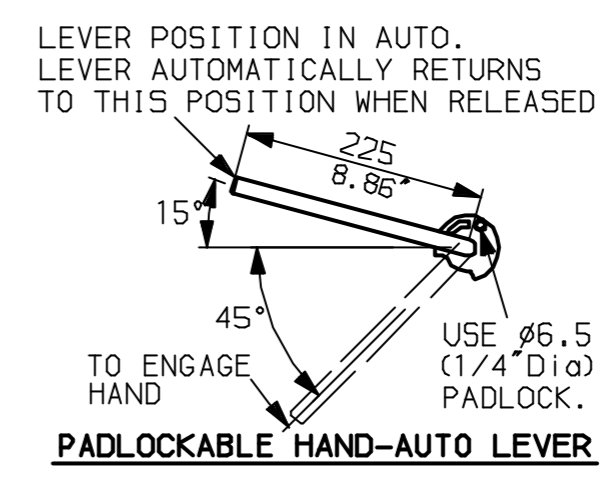
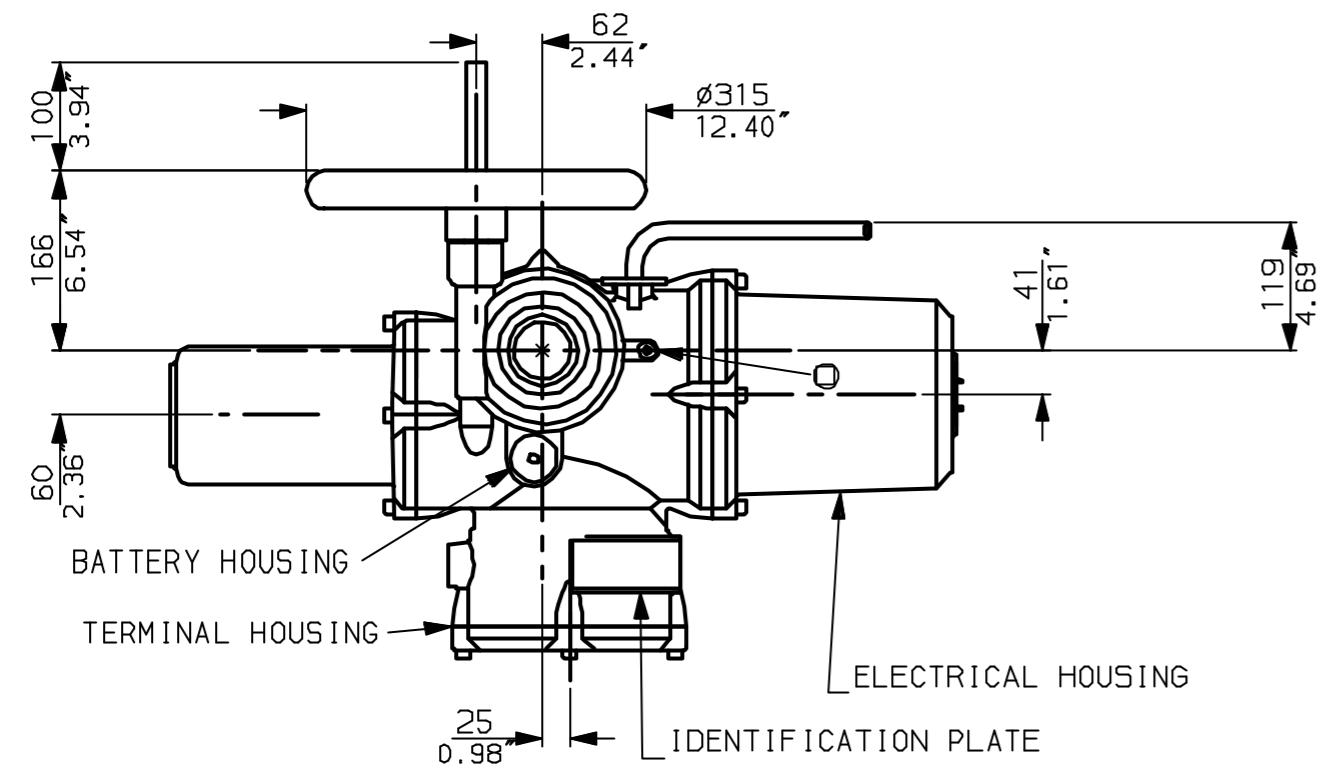
Title IQ20, 25 (+IQS20), SHW, IW (MOW) 7 (+72) RL,		
STANDARD DIMENSIONAL DATA		
Drawn CAD	Checked PRE	Ref Data Sheet
Date April 04	Job No	IQ25HW_IW7RL

NOTE:  
 Gearbox is shown with LOW Ratio Input Reducer.  
 (ie Ratios 120, 180, 240, 360)  
 See Data Sheet with IW7Rh for HIGH ratio option.

01	First Issue.
Scale	1:7 THIRD ANGLE PROJECTION
Drawing Number	IQ25HW_IW7RL

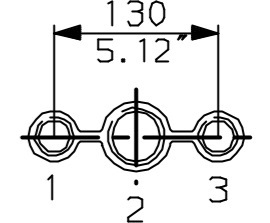
1 | 2 | 3 | 4 | 5 | 6 | 7 | 8 | 9 | 10

G  
F  
E  
D  
C  
B  
A

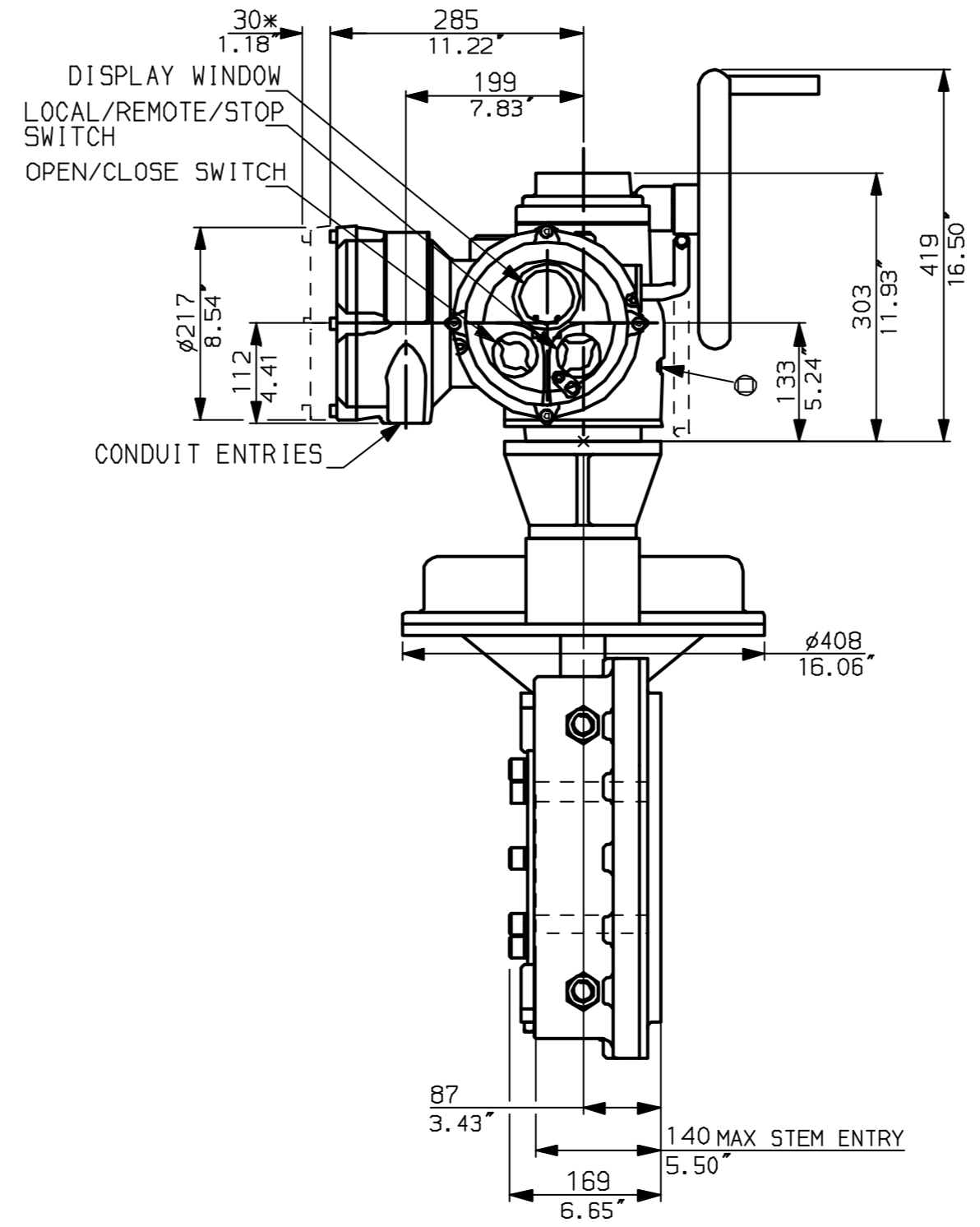
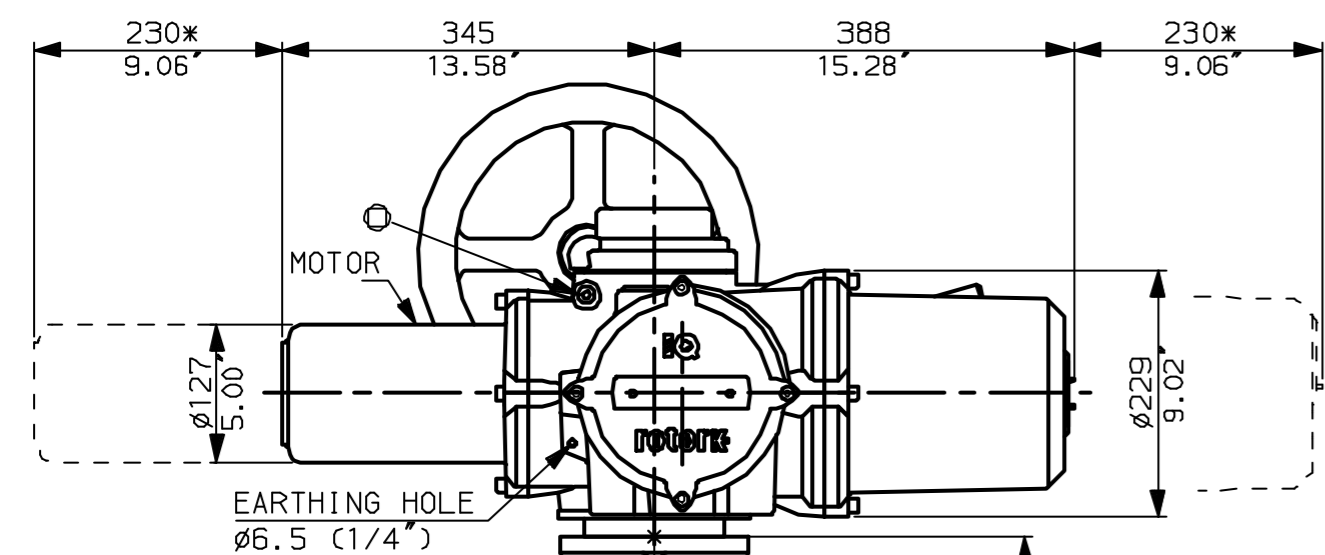


NOTES:  
 DIMENSIONS WITH '\*' INDICATE COVER REMOVAL ALLOWANCE  
 NETT WEIGHT = 214kg (471 lbs)  
 $\odot$  = OIL FILLER/DRAIN PLUG  
 THE INTERFACE PROVIDED FOR MOUNTING THE ACTUATOR OR SECOND STAGE GEARBOX ONTO THE VALVE SHOULD CONFORM TO GOOD ENGINEERING PRACTICES, ENSURING ADEQUATELY TOLERANCED LIMITS FOR PARALLELISM, PERPENDICULARITY AND CONCENTRICITY.

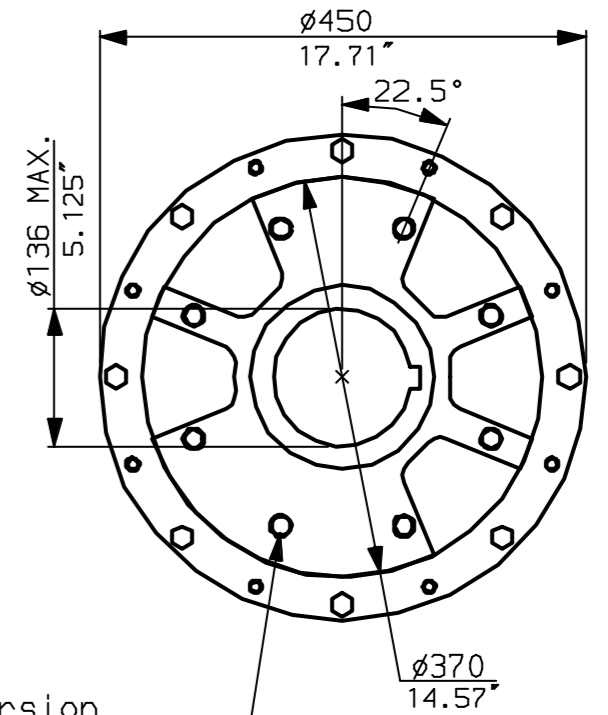
**CONDUIT ENTRIES** (N.T.S)



Nos.1 & 3 TAPPED 1" NPT  
 No.2 TAPPED 1 1/2" NPT  
 STD ALTERNATIVES IF SPECIFIED  
 2 X M25, 1 X M40  
 2 X PG16, 1 X PG29



N.B. KEYWAY POS. CAN BE MOVED 90 OR 180° BY REMOVING 8 SCREWS MARKED (A) AND ROTATING OUTPUT SLEEVE.



"F" version  
 8 HOLES TAPPED M20 x 24 DP  
 EQUI-SPACED AS SHOWN ON A  
 298 PCD (ISO 5211-F30).

"FA" version  
 8 HOLES TAPPED 3/4" UNC x 0.94" dp  
 EQUI-SPACED AS SHOWN ON A  
 11.75" PCD (MSS SP101-FA30).



Rotork Controls Ltd.  
 Bath England, BA1 3JQ.  
 (Phone 01225-733200)  
 Rotork Controls Inc.  
 Rochester, NY 14624  
 (Phone 585-328-1550)

Title IQ20, 25 (+IQS20), SHW, IW (MOW) 7 (+72) Rh,		
STANDARD DIMENSIONAL DATA		
Drawn CAD	Checked PRE	Ref Data Sheet
Date April 04	Job No	IQ25HW_IW7Rh

NOTE:  
 Gearbox is shown with HIGH Ratio Input Reducer.  
 (ie Ratios 480, 540, 720)  
 See Data Sheet with IW7RL for LOW ratio option.

01	First Issue.
Scale	1:7 THIRD ANGLE PROJECTION
Drawing Number	IQ25HW_IW7Rh

1 | 2 | 3 | 4 | 5 | 6 | 7 | 8 | 9 | 10