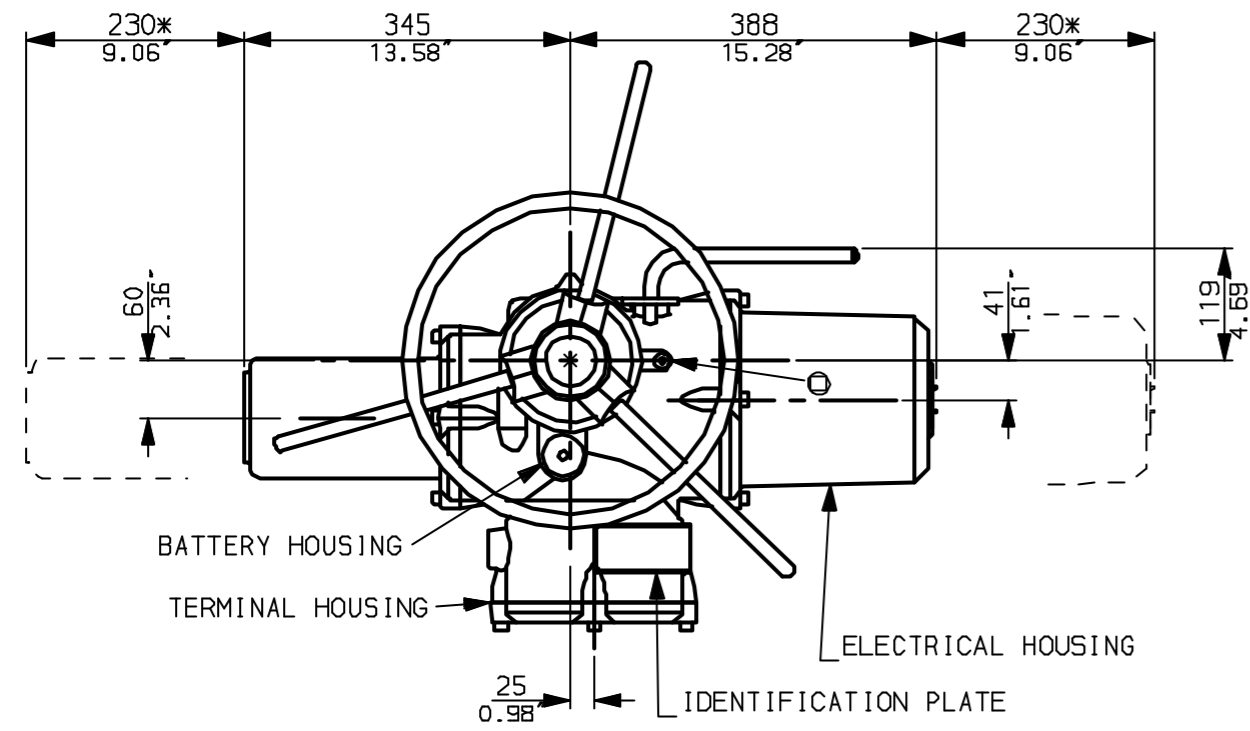
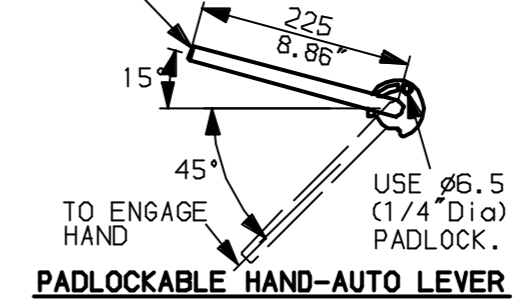


G
F
E
D
C
B
A

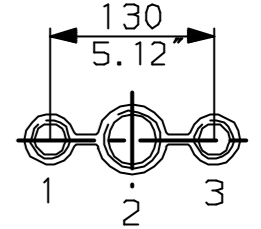


LEVER POSITION IN AUTO.
 LEVER AUTOMATICALLY RETURNS
 TO THIS POSITION WHEN RELEASED

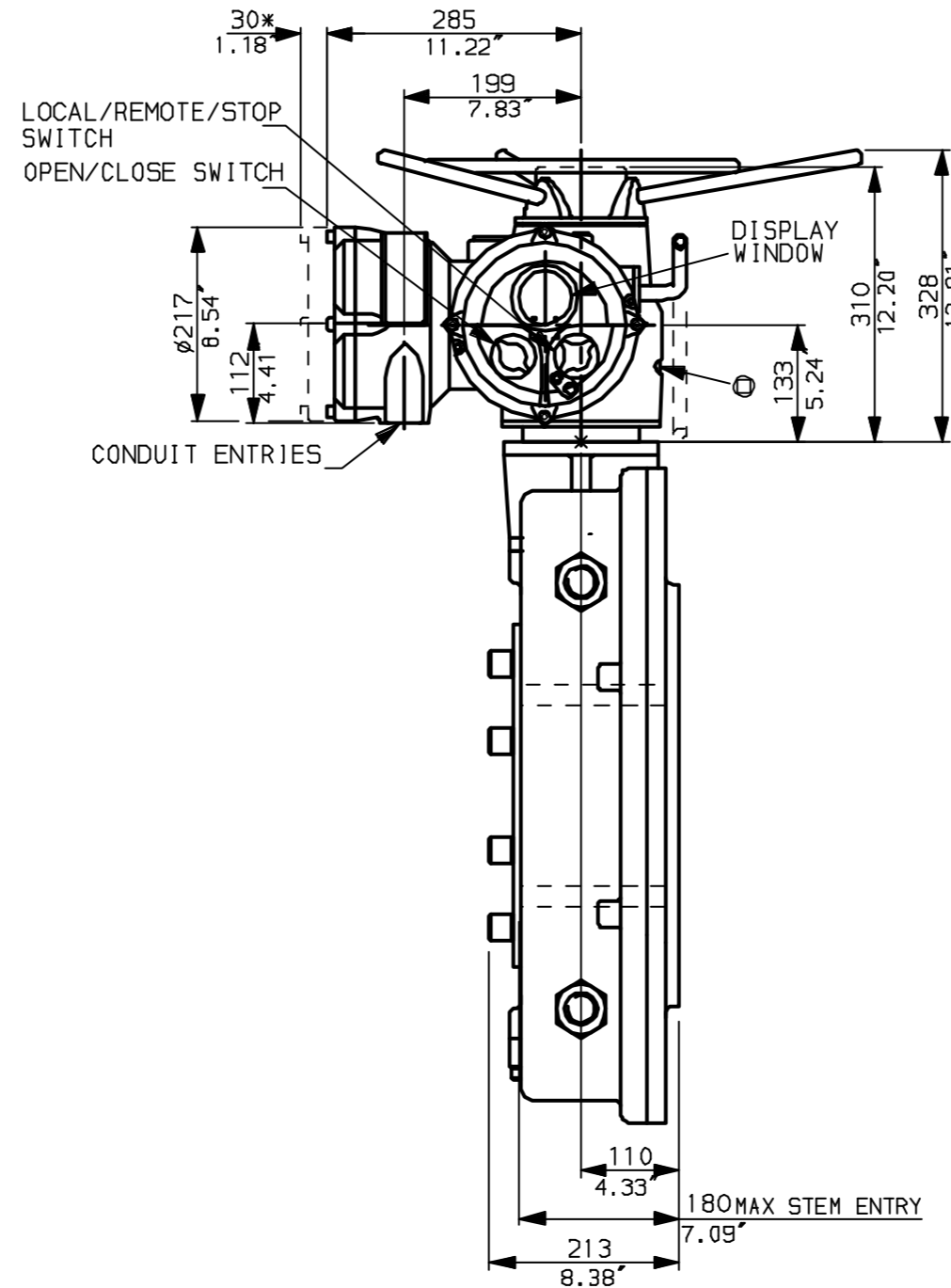
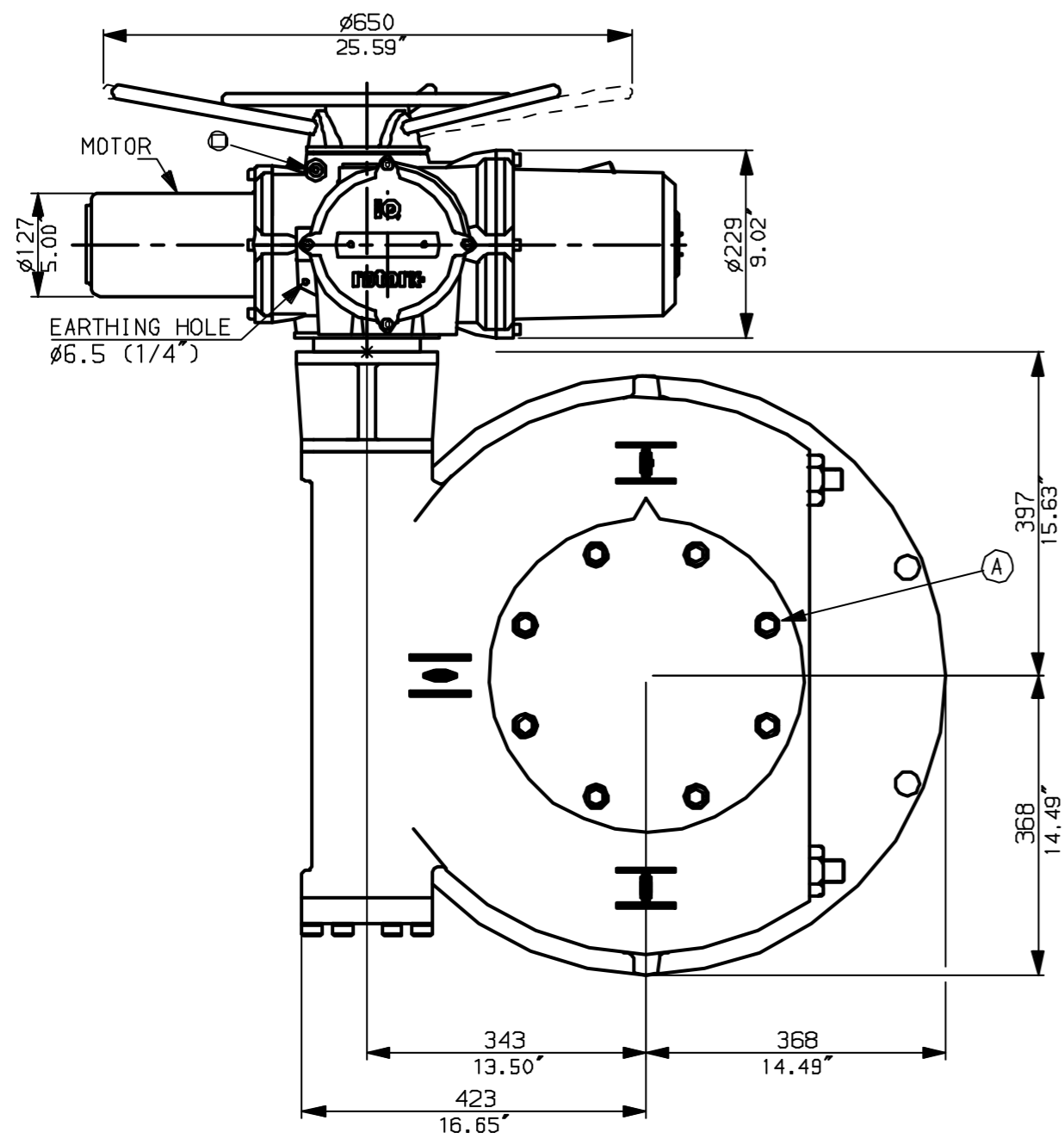


NOTES:
 * DIMENSIONS WITH '*' INDICATE COVER REMOVAL ALLOWANCE
 : NETT WEIGHT = 382kg (840lbs)
 : \odot = OIL FILLER/DRAIN PLUG
 : THE INTERFACE PROVIDED FOR MOUNTING THE ACTUATOR OR SECOND STAGE GEARBOX ONTO THE VALVE SHOULD CONFORM TO GOOD ENGINEERING PRACTICES, ENSURING ADEQUATELY TOLERANCED LIMITS FOR PARALLELISM, PERPENDICULARITY AND CONCENTRICITY.

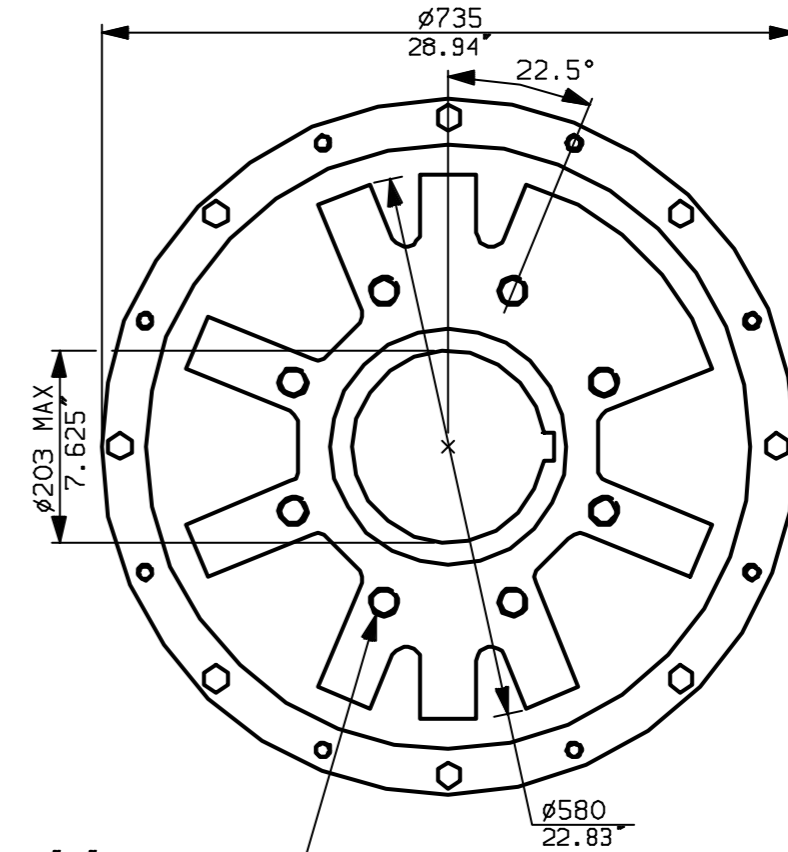
CONDUIT ENTRIES (N.T.S)



Nos.1 & 3 TAPPED 1" NPT
 No.2 TAPPED 1 1/2" NPT
 STD ALTERNATIVES IF SPECIFIED
 2 X M25, 1 X M40
 2 X PG16, 1 X PG29



N.B. KEYWAY POS. CAN BE MOVED IN
 45° STEPS BY REMOVING 8 SCREWS
 MARKED (A) AND ROTATING OUTPUT
 SLEEVE.



"F" version
 8 HOLES TAPPED M30 x 36 DEEP,
 EQUI-SPACED OFF CENTRES ON A
 356 P.C.D. (ISO 5211-F35).

"FA" version
 8 HOLES TAPPED 1" UNC x 1.42" dp
 EQUI-SPACED OFF CENTRES ON A
 14" PCD (MSS SP101-FA35).

rotork
 www.rotork.com

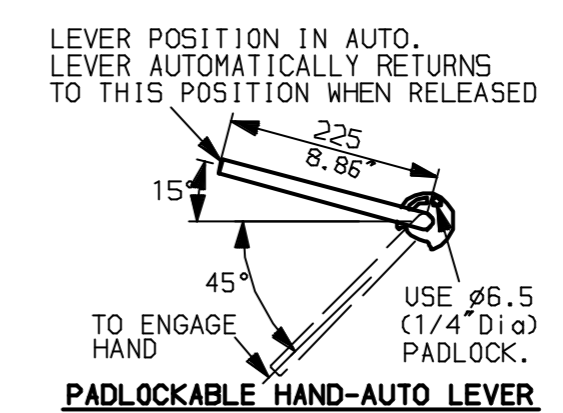
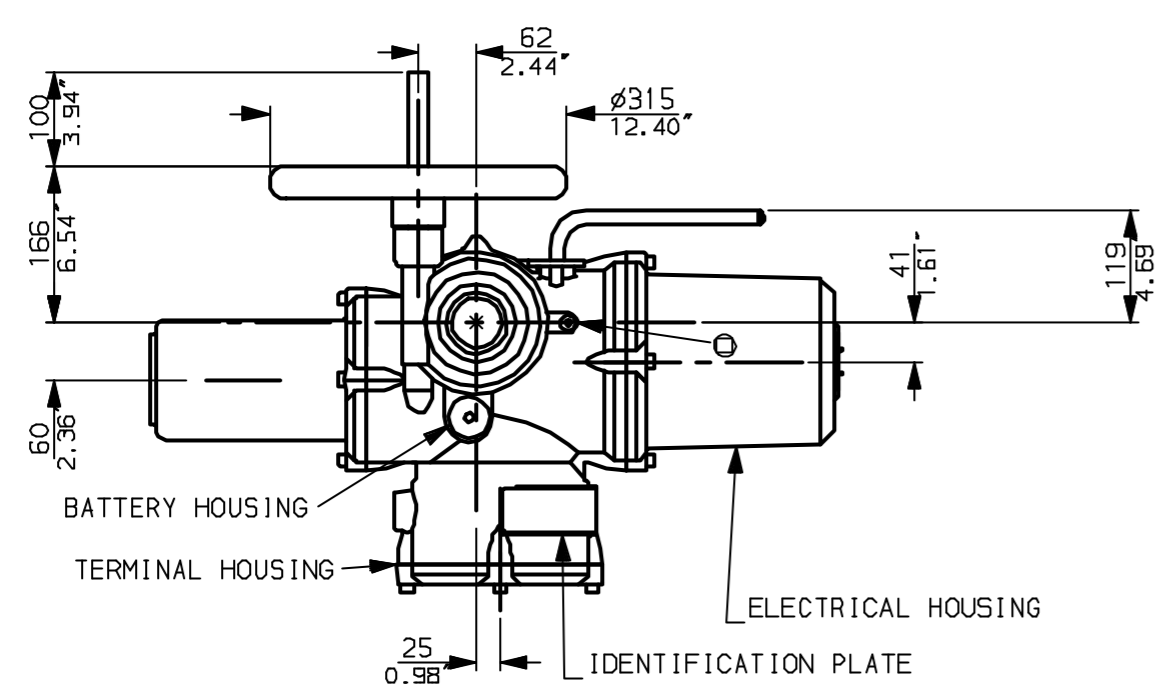
Rotork Controls Ltd.
 Bath England, BA1 3JQ.
 (Phone 01225-733200)
 Rotork Controls Inc.
 Rochester, NY 14624
 (Phone 585-328-1550)

Title IQM20, 25, THW, MOW10,		
STANDARD DIMENSIONAL DATA		
Drawn CAD	Checked PRE	Ref Data Sheet
Date April 04	Job No IQ2THW_MOW10	

01	First Issue.
Scale	1:8 THIRD ANGLE PROJECTION
Drawing Number	IQ2THW_MOW10

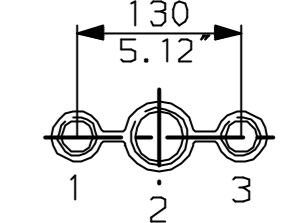
1 | 2 | 3 | 4 | 5 | 6 | 7 | 8 | 9 | 10

G
F
E
D
C
B
A

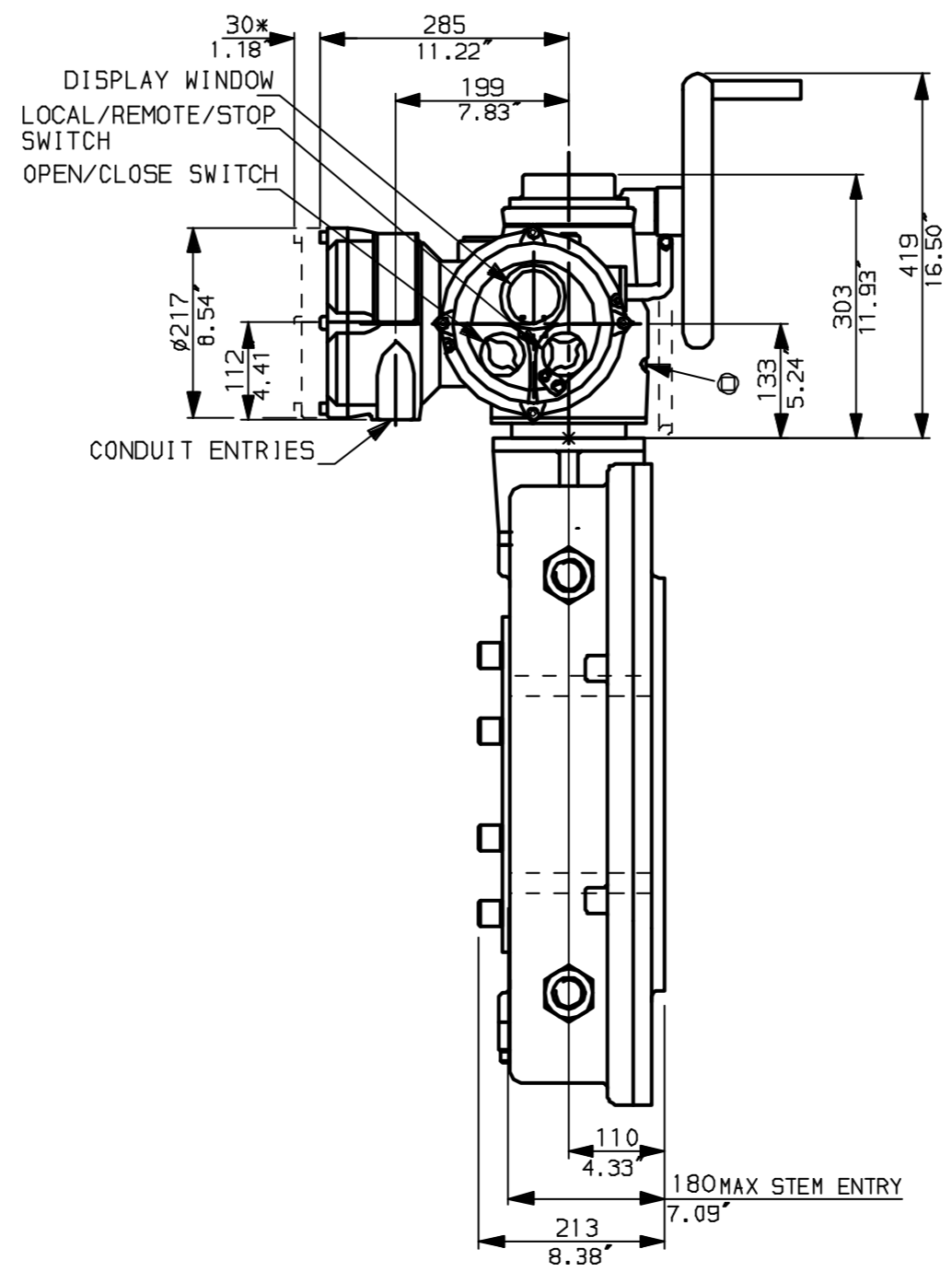
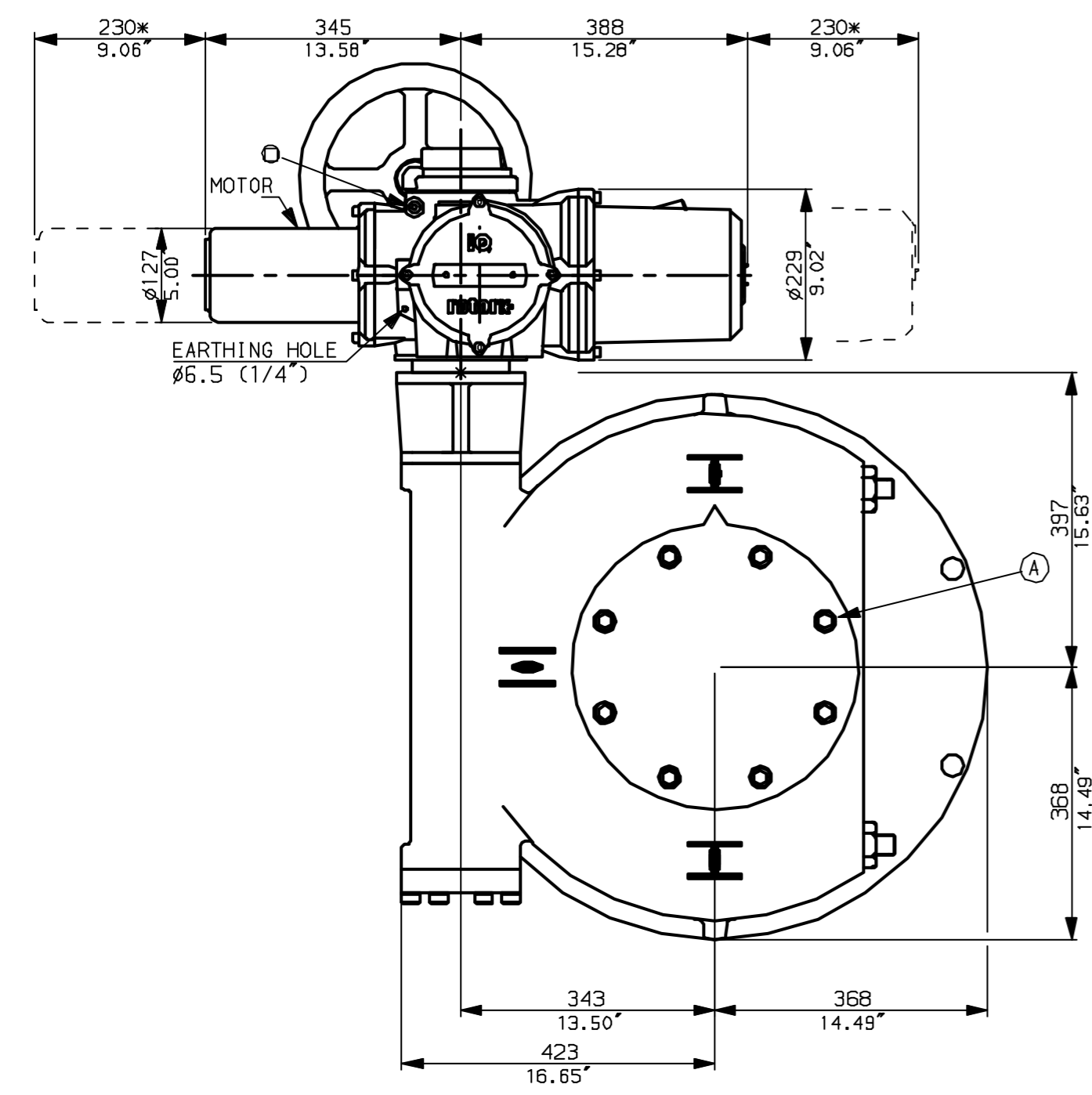


NOTES:
 * DIMENSIONS WITH '*' INDICATE COVER REMOVAL ALLOWANCE
 : NETT WEIGHT = 382kg (840lbs)
 : \odot = OIL FILLER/DRAIN PLUG
 : THE INTERFACE PROVIDED FOR MOUNTING THE ACTUATOR OR SECOND STAGE GEARBOX ONTO THE VALVE SHOULD CONFORM TO GOOD ENGINEERING PRACTICES, ENSURING ADEQUATELY TOLERANCED LIMITS FOR PARALLELISM, PERPENDICULARITY AND CONCENTRICITY.

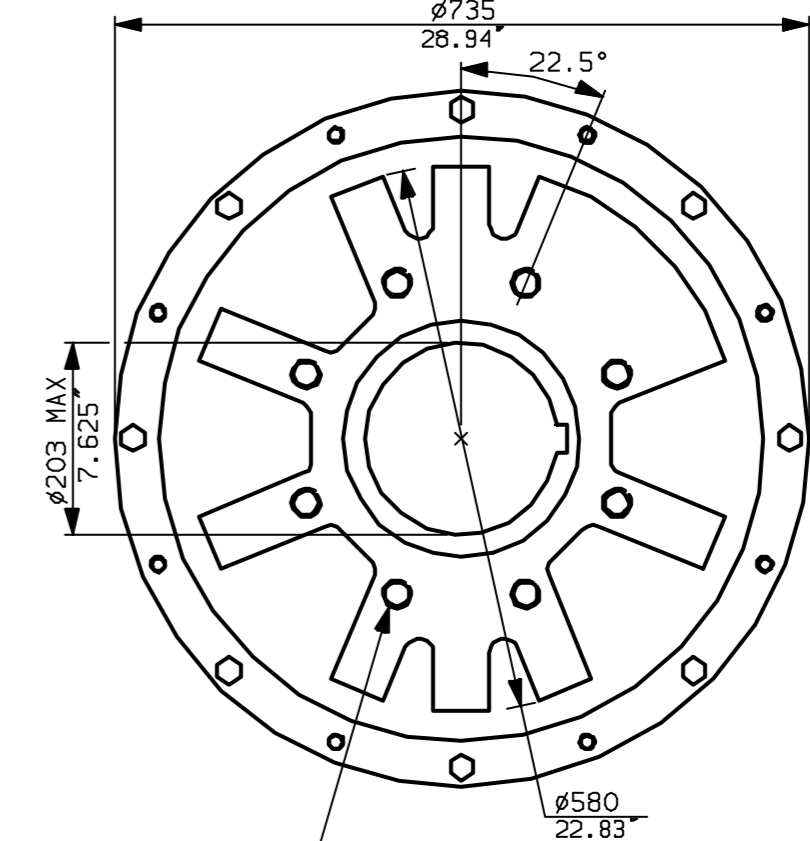
CONDUIT ENTRIES (N.T.S)



Nos.1 & 3 TAPPED 1" NPT
 No.2 TAPPED 1 1/2" NPT
 STD ALTERNATIVES IF SPECIFIED
 2 X M25, 1 X M40
 2 X PG16, 1 X PG29



N.B. KEYWAY POS. CAN BE MOVED IN 45° STEPS BY REMOVING 8 SCREWS MARKED (A) AND ROTATING OUTPUT SLEEVE.



"F" version
 8 HOLES TAPPED M30 x 36 DEEP, EQUI-SPACED OFF CENTRES ON A 356 P.C.D. (ISO 5211-F35).
 "FA" version
 8 HOLES TAPPED 1" UNC x 1.42" dp EQUI-SPACED OFF CENTRES ON A 14" PCD (MSS SP101-FA35).



Rotork Controls Ltd.
 Bath England, BA1 3JQ.
 (Phone 01225-733200)
 Rotork Controls Inc.
 Rochester, NY 14624
 (Phone 585-328-1550)

Title IQM20, 25, SHW, MOW10,		
STANDARD DIMENSIONAL DATA		
Drawn CAD	Checked PRE	Ref Data Sheet
Date April 04	Job No IQ25HW_MOW10	

01	First Issue.
Scale 1:8	THIRD ANGLE PROJECTION
Drawing Number	IQ25HW_MOW10

1 | 2 | 3 | 4 | 5 | 6 | 7 | 8 | 9 | 10