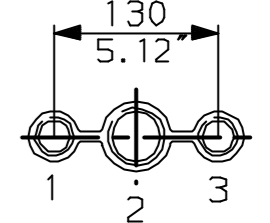
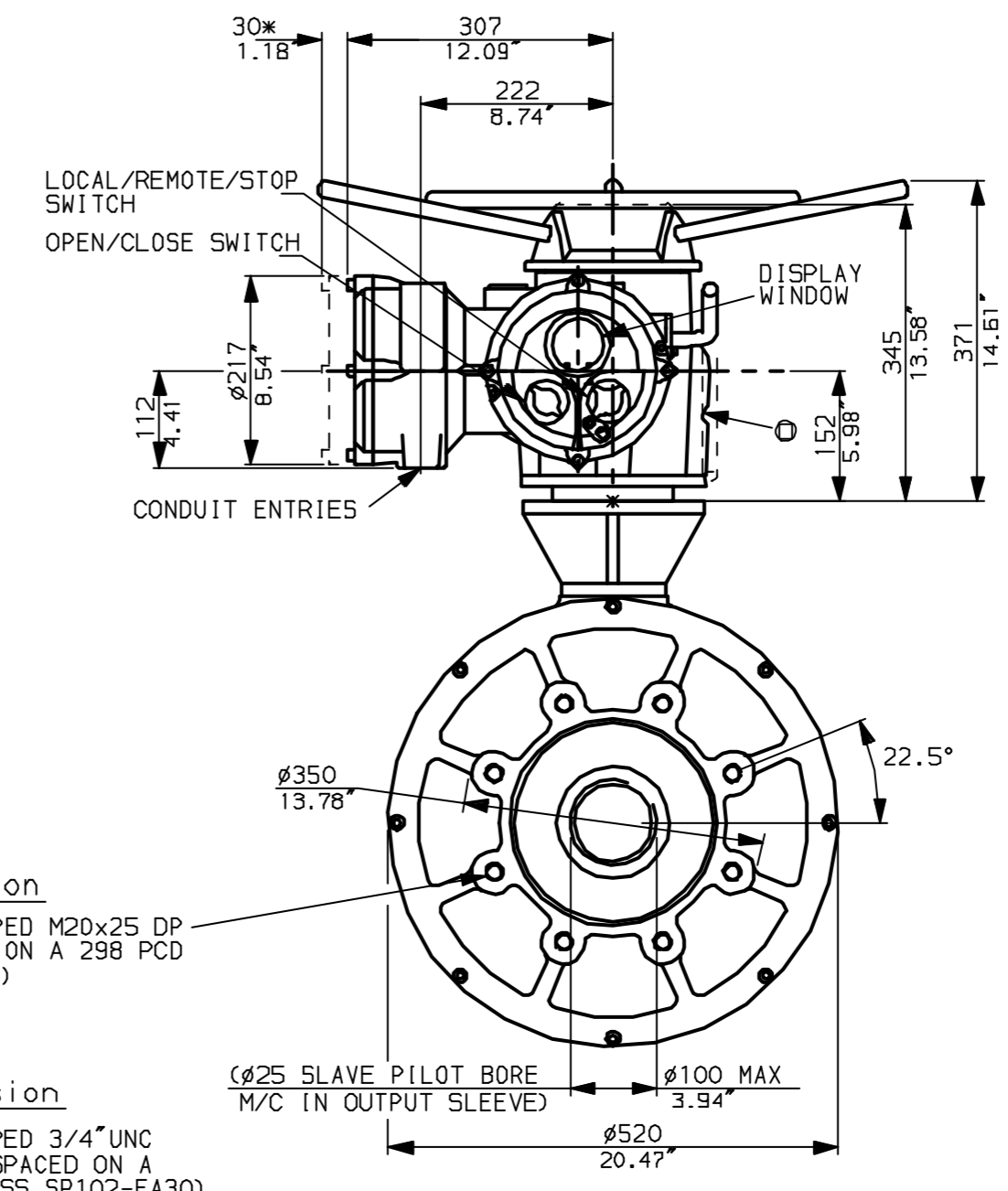
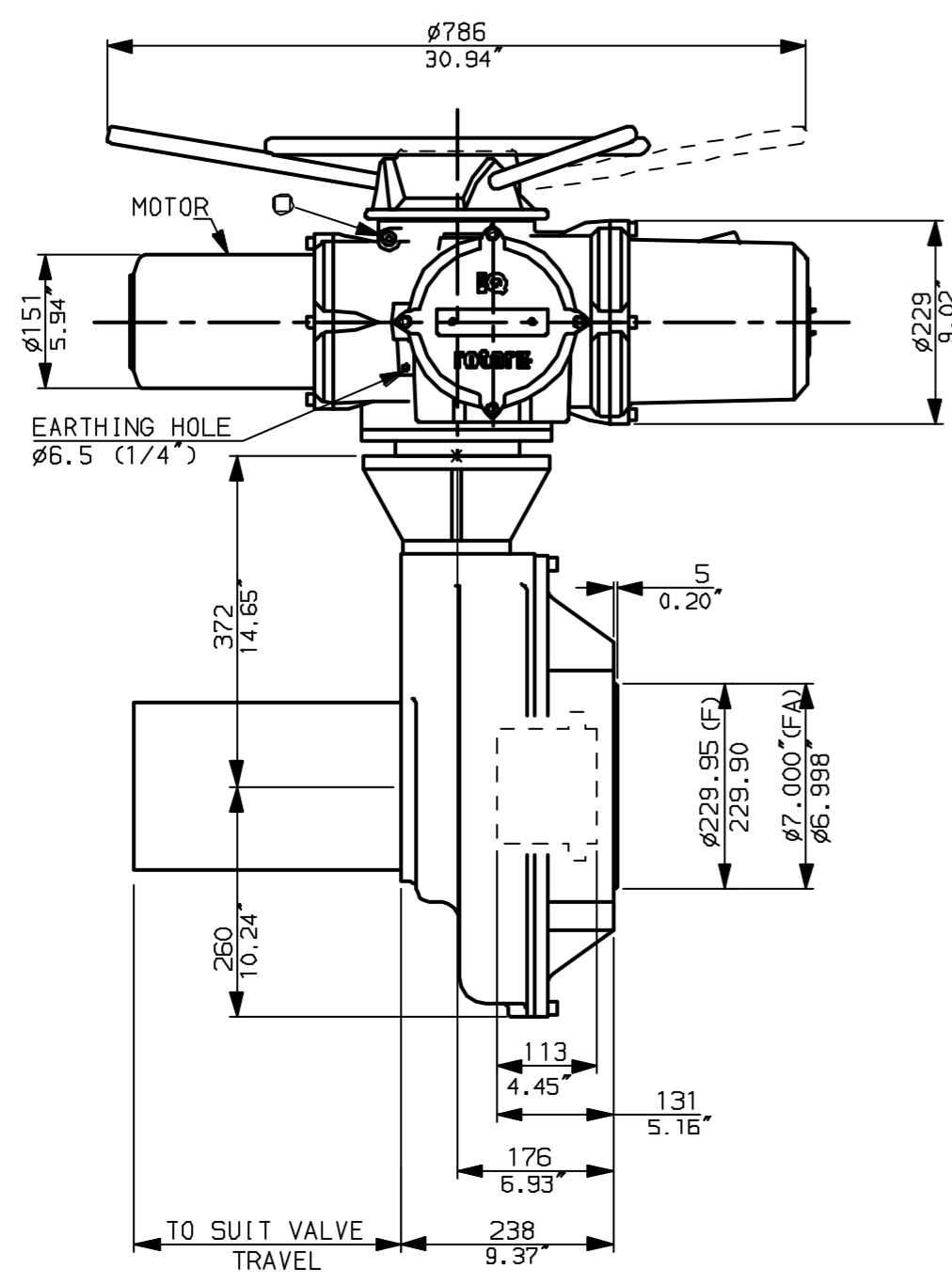


**NOTES:**  
 \*DIMENSIONS WITH '\*' INDICATE COVER REMOVAL ALLOWANCE  
 :NETT WEIGHT = 247kg (543lbs)  
 : = OIL FILLER/DRAIN PLUG  
 :THE INTERFACE PROVIDED FOR MOUNTING THE ACTUATOR OR SECOND STAGE GEARBOX ONTO THE VALVE SHOULD CONFORM TO GOOD ENGINEERING PRACTICES, ENSURING ADEQUATELY TOLERANCED LIMITS FOR PARALLELISM, PERPENDICULARITY AND CONCENTRICITY.

**CONDUIT ENTRIES (N.T.S)**

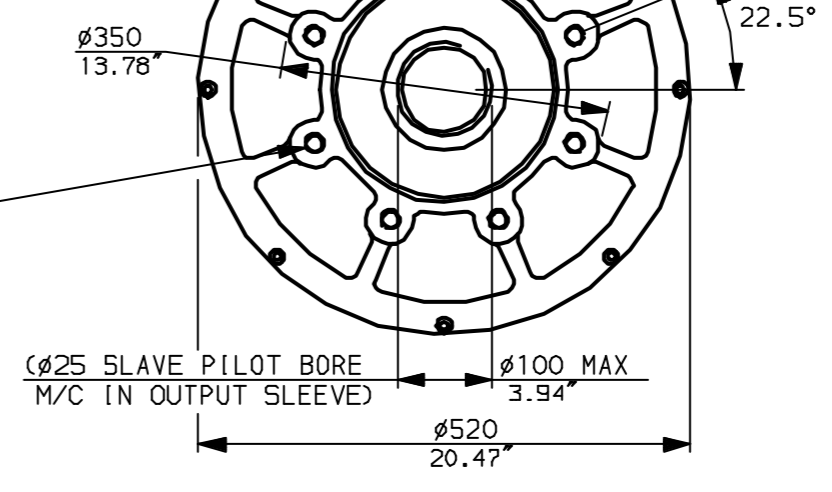


Nos.1 & 3 TAPPED 1" NPT  
 No.2 TAPPED 1 1/2" NPT  
 STD ALTERNATIVES IF SPECIFIED  
 2 X M25, 1 X M40  
 2 X PG16, 1 X PG29



**"F" version**  
 8 HOLES TAPPED M20x25 DP  
 EQUI-SPACED ON A 298 PCD  
 (ISO5210 F30)

**"FA" version**  
 8 HOLES TAPPED 3/4" UNC  
 x1" dp EQUI-SPACED ON A  
 11.75" PCD (MSS SP102-FA30)



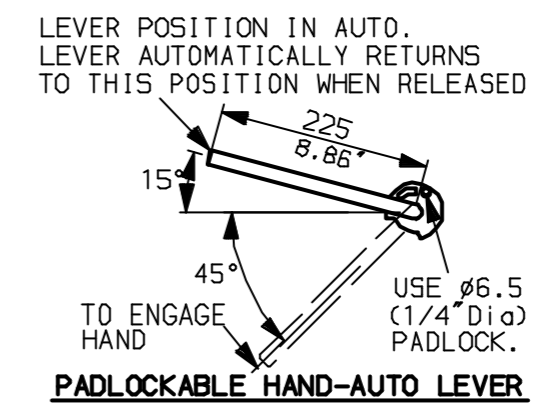
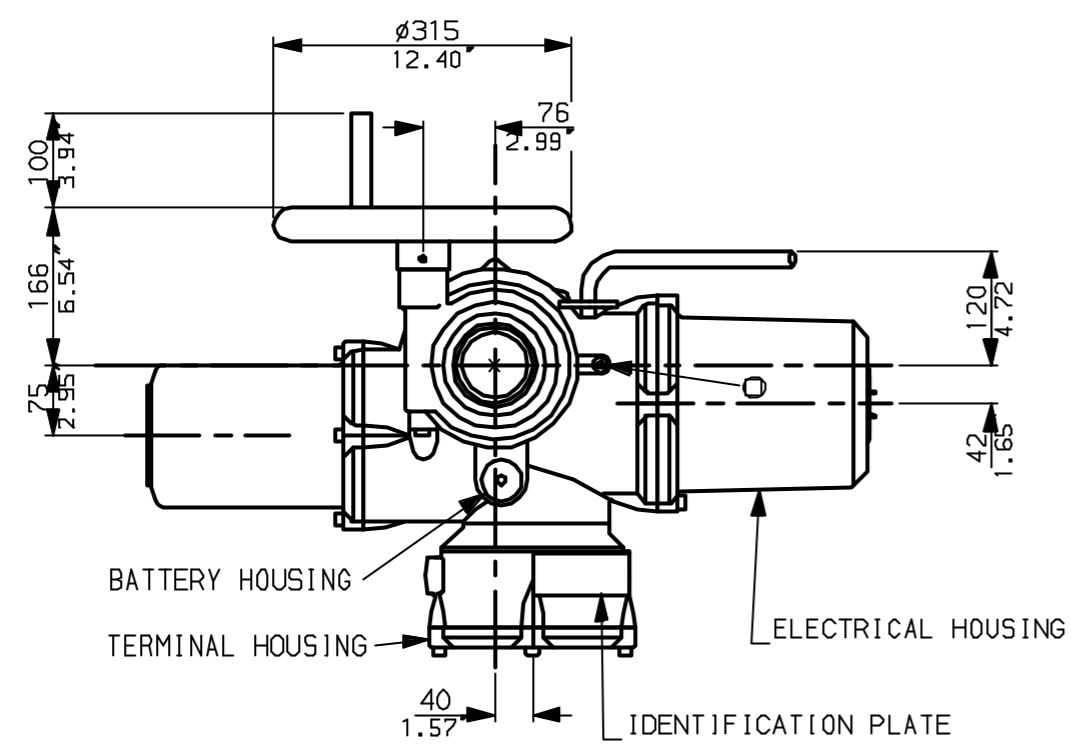
Rotork Controls Ltd.  
 Bath England, BA1 3JQ.  
 (Phone 01225-733200)

Rotork Controls Inc.  
 Rochester, NY 14624  
 (Phone 585-328-1550)

Title IQ35 (+IQM35+IQS35), THW, IB12,		
STANDARD DIMENSIONAL DATA		
Drawn CAD	Checked PRE	Ref Data Sheet
Date April 04	Job No	<b>IQ35THW_IB12</b>

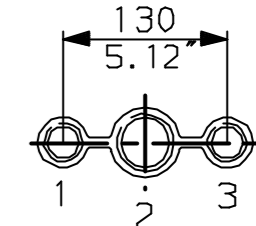
01	First Issue.
Scale	1:8 THIRD ANGLE PROJECTION
Drawing Number	<b>IQ35THW_IB12</b>

G  
F  
E  
D  
C  
B  
A

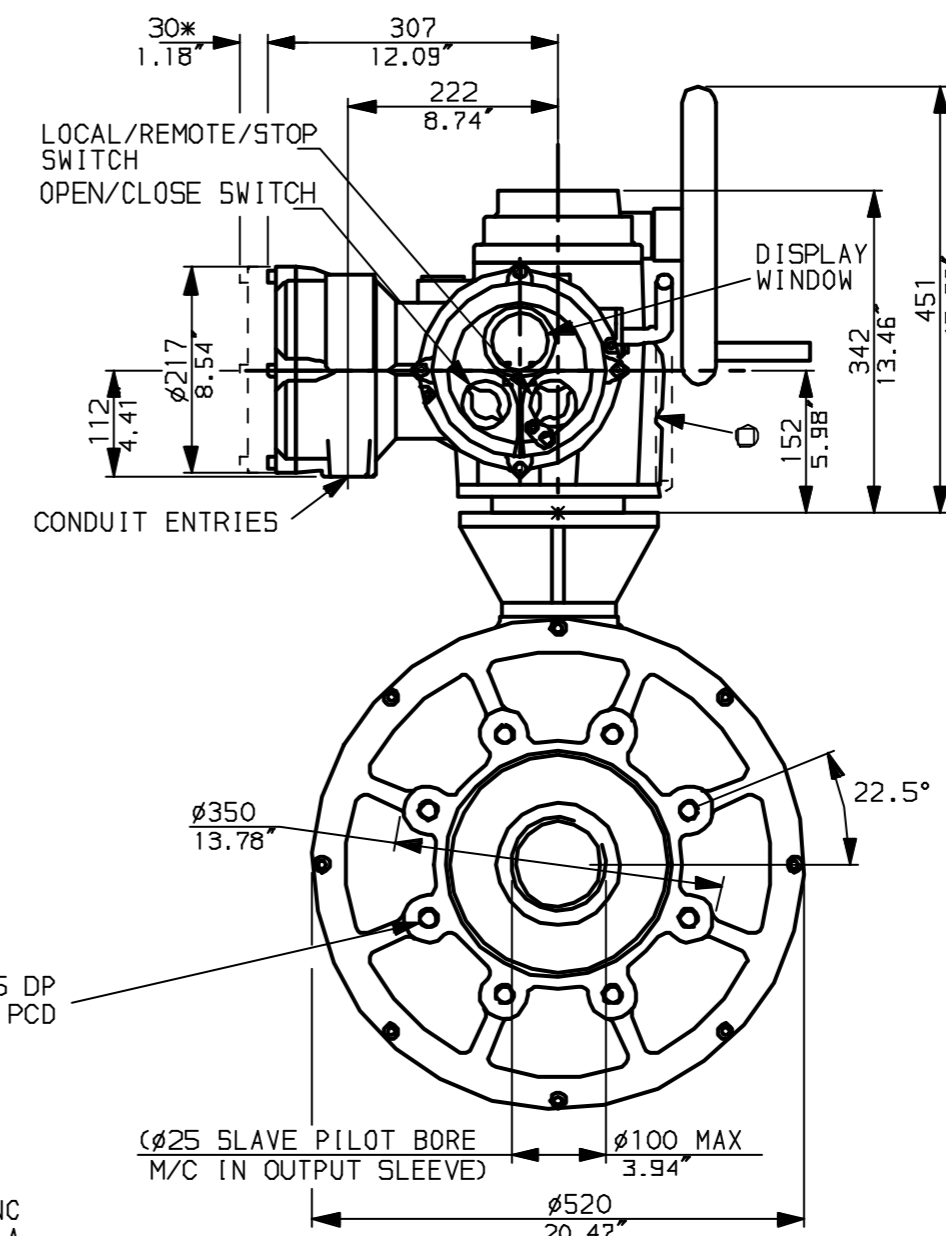
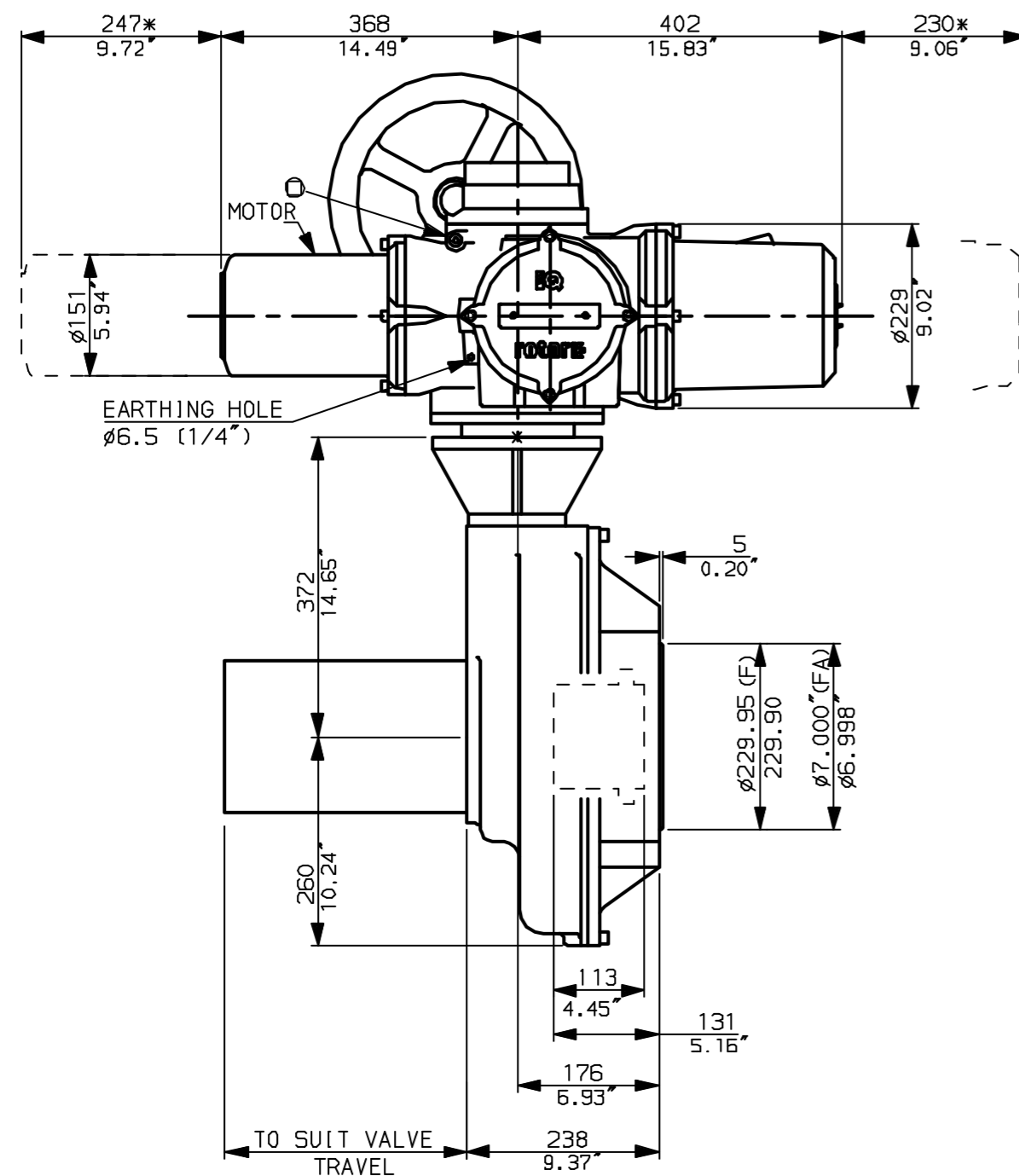


**NOTES:**  
 DIMENSIONS WITH '\*' INDICATE COVER REMOVAL ALLOWANCE  
 NETT WEIGHT = 247kg (543lbs)  
 ○ = OIL FILLER/DRAIN PLUG  
 THE INTERFACE PROVIDED FOR MOUNTING THE ACTUATOR OR SECOND STAGE GEARBOX ONTO THE VALVE SHOULD CONFORM TO GOOD ENGINEERING PRACTICES, ENSURING ADEQUATELY TOLERANCED LIMITS FOR PARALLELISM, PERPENDICULARITY AND CONCENTRICITY.

**CONDUIT ENTRIES (N.T.S)**



Nos.1 & 3 TAPPED 1" NPT  
 No.2 TAPPED 1 1/2" NPT  
 STD ALTERNATIVES IF SPECIFIED  
 2 X M25, 1 X M40  
 2 X PG16, 1 X PG29



**"F" version**  
 8 HOLES TAPPED M20x25 DP EQUI-SPACED ON A 298 PCD (1505210 F30)

**"FA" version**  
 8 HOLES TAPPED 3/4" UNC x1" dp EQUI-SPACED ON A 11.75"PCD (M55 SP102-FA30)



Rotork Controls Ltd.  
 Bath England, BA1 3JQ.  
 (Phone 01225-733200)

Rotork Controls Inc.  
 Rochester, NY 14624  
 (Phone 585-328-1550)

Title IQ35 (+IQM35+IQS35), SHW, IB12,		
STANDARD DIMENSIONAL DATA		
Drawn CAD	Checked PRE	Ref Data Sheet
Date April 04	Job No	<b>IQ35SHW_IB12</b>

01	First Issue.
Scale	1:8 THIRD ANGLE PROJECTION
Drawing Number	<b>IQ35SHW_IB12</b>

1 | 2 | 3 | 4 | 5 | 6 | 7 | 8 | 9 | 10