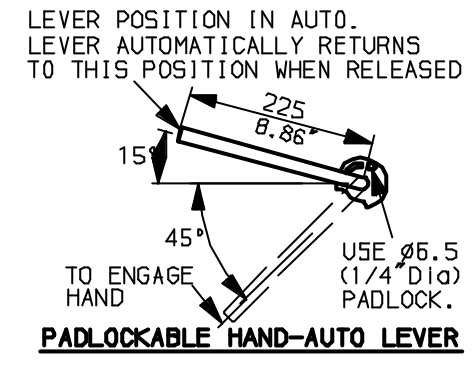
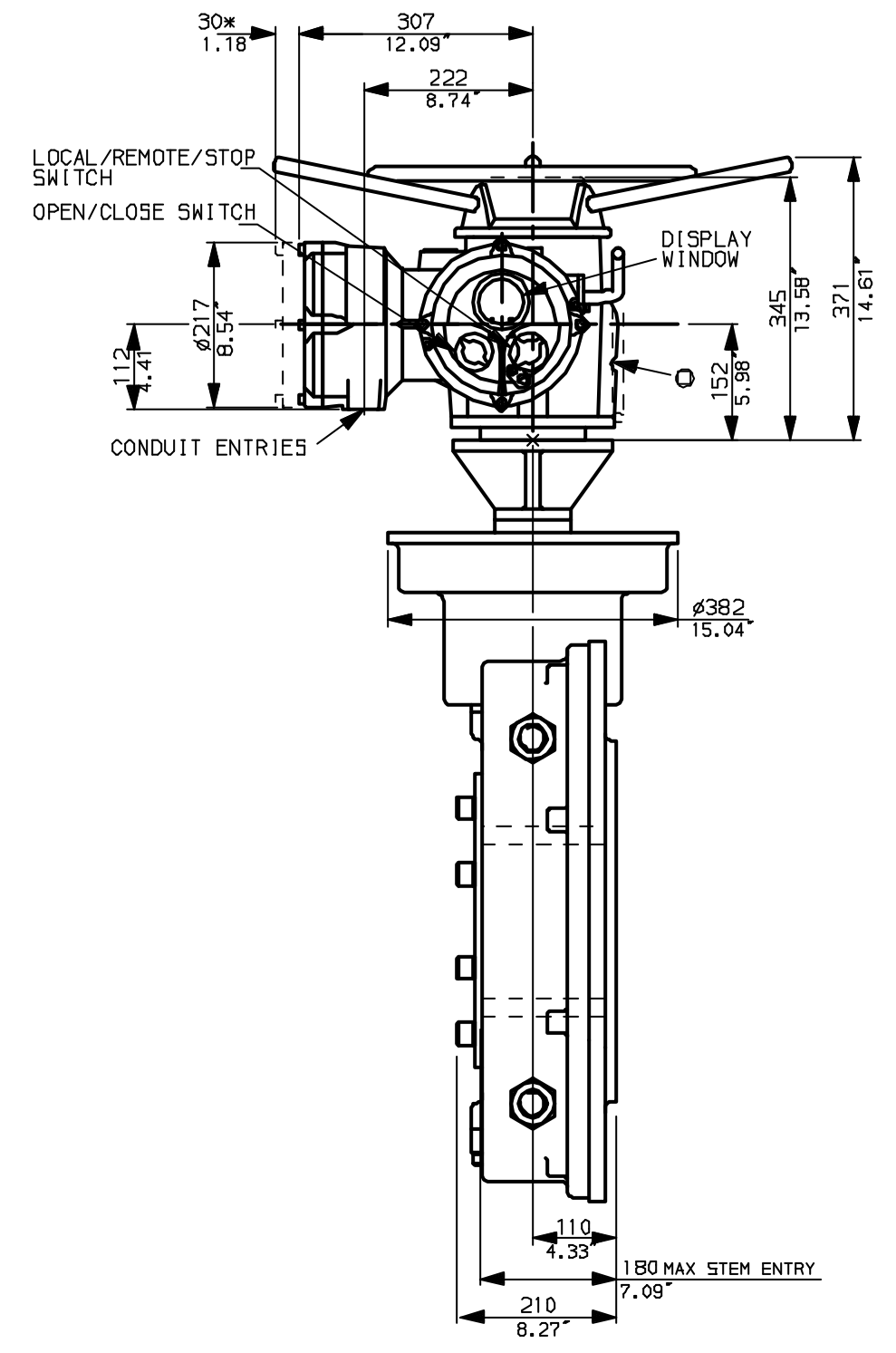
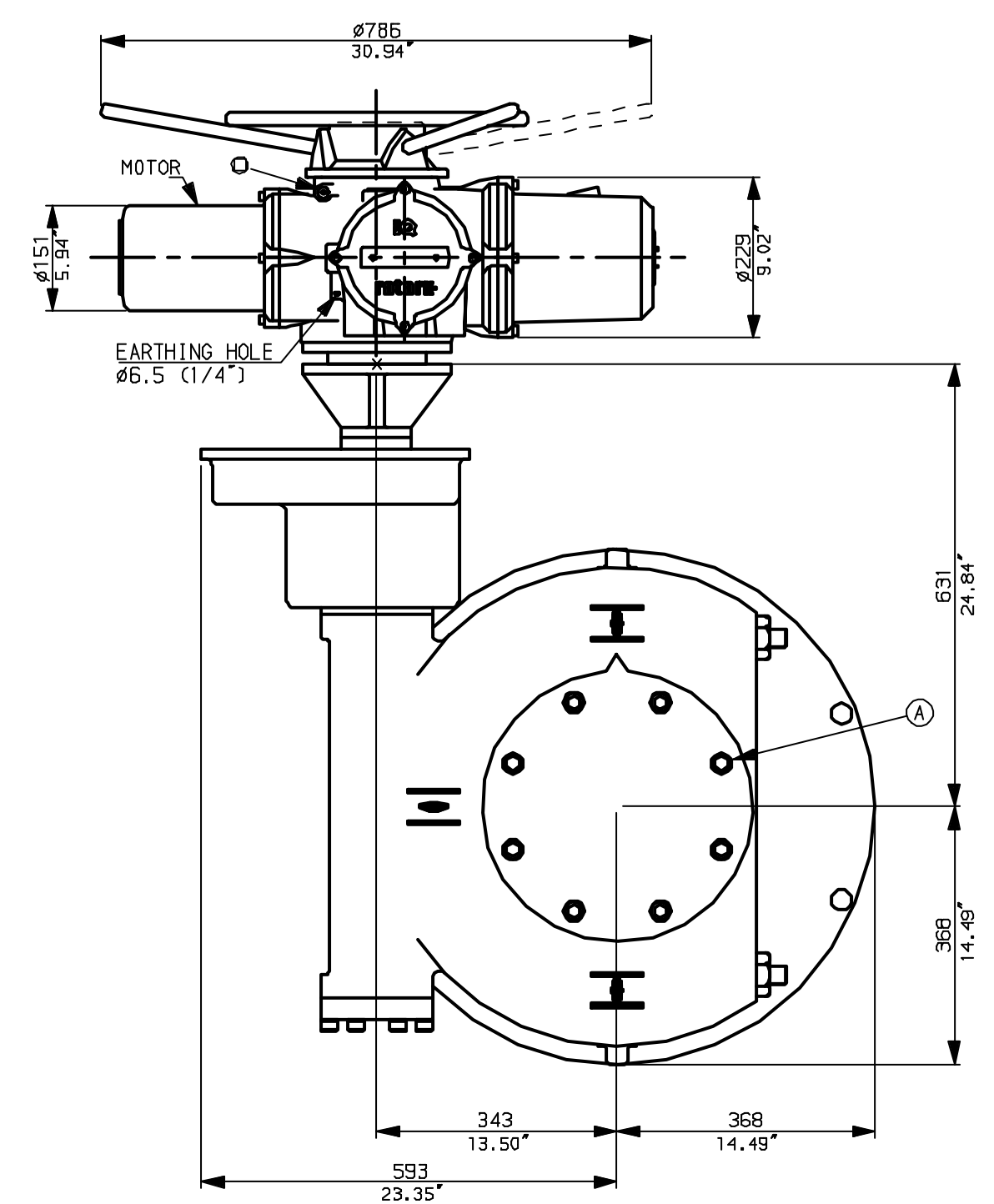
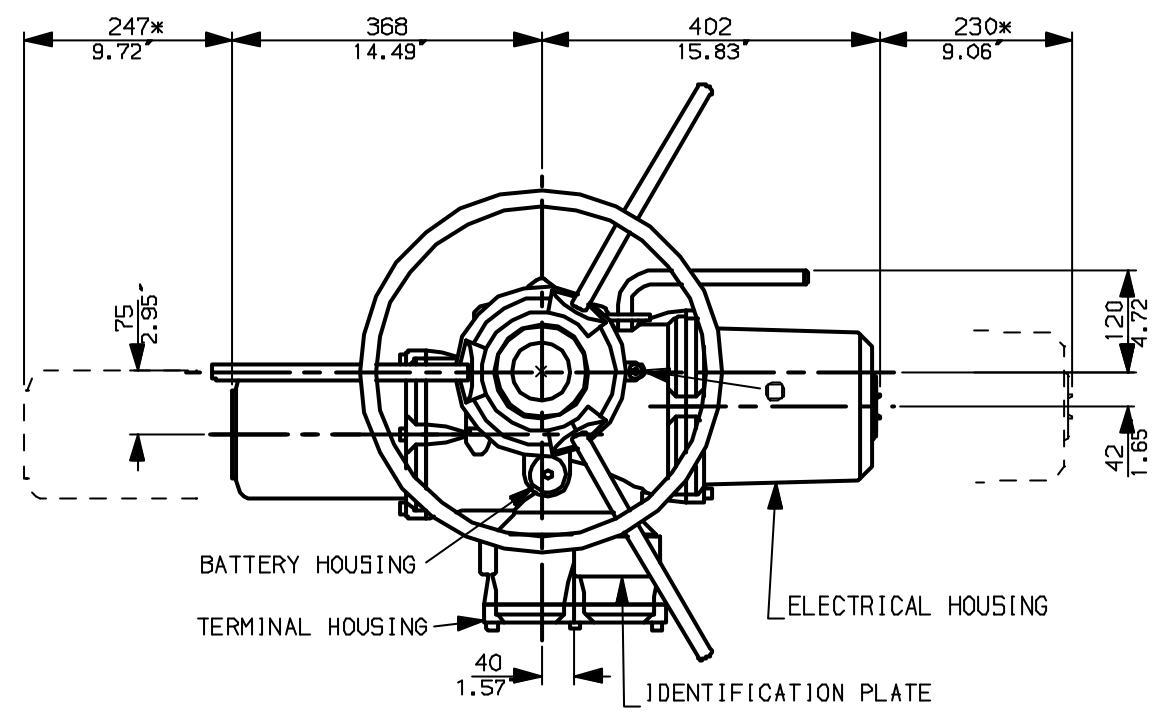
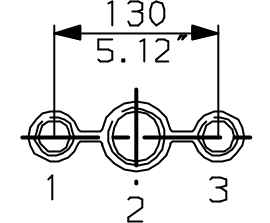


G  
F  
E  
D  
C  
B  
A

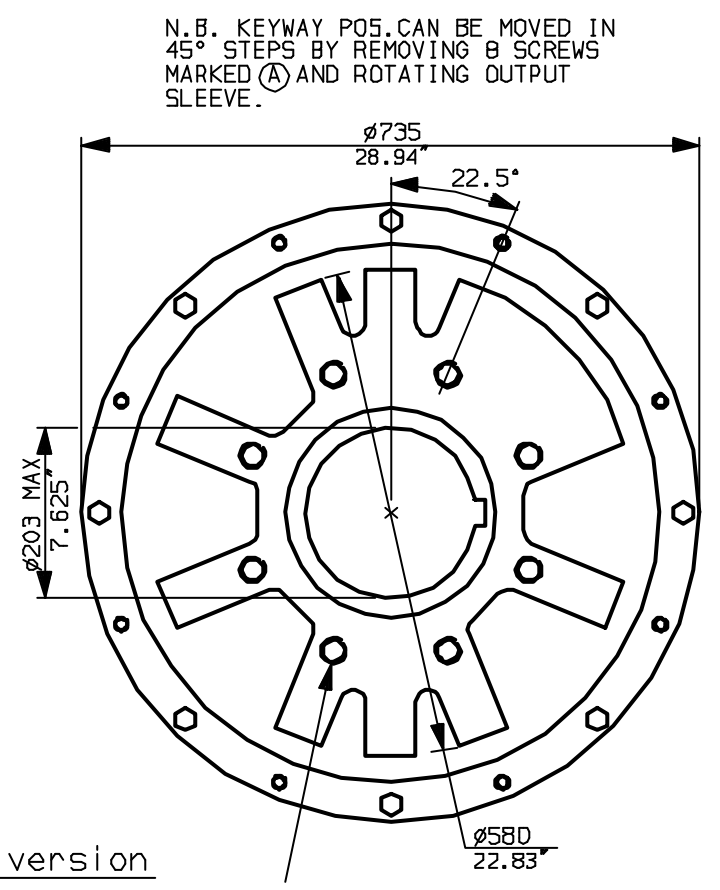


NOTES:  
 \* DIMENSIONS WITH '\*' INDICATE COVER REMOVAL ALLOWANCE  
 : NETT WEIGHT = 483kg (1063lbs)  
 : = OIL FILLER/DRAIN PLUG  
 : THE INTERFACE PROVIDED FOR MOUNTING THE ACTUATOR OR SECOND STAGE GEARBOX ONTO THE VALVE SHOULD CONFORM TO GOOD ENGINEERING PRACTICES, ENSURING ADEQUATELY TOLERANCED LIMITS FOR PARALLELISM, PERPENDICULARITY AND CONCENTRICITY.

**CONDUIT ENTRIES** (N.T.S)



Nos.1 & 3 TAPPED 1" NPT  
 No.2 TAPPED 1 1/2" NPT  
 STD ALTERNATIVES IF SPECIFIED  
 2 X M25, 1 X M40  
 2 X PG16, 1 X PG29



"F" version  
 8 HOLES TAPPED M30 x 36 DEEP, EQUI-SPACED OFF CENTRES ON A 356 P.C.D. (ISO 5211-F35).  
 "FA" version  
 8 HOLES TAPPED 1"UNCx1.42"dp EQUI-SPACED OFF CENTRES ON A 14" PCD (MSS SP101-FA35).



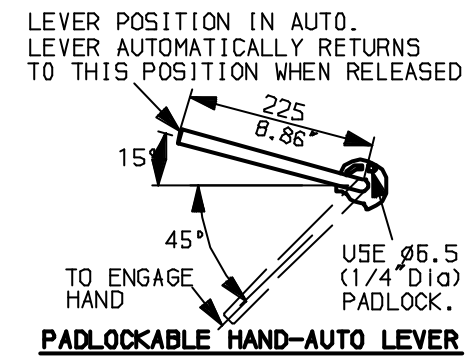
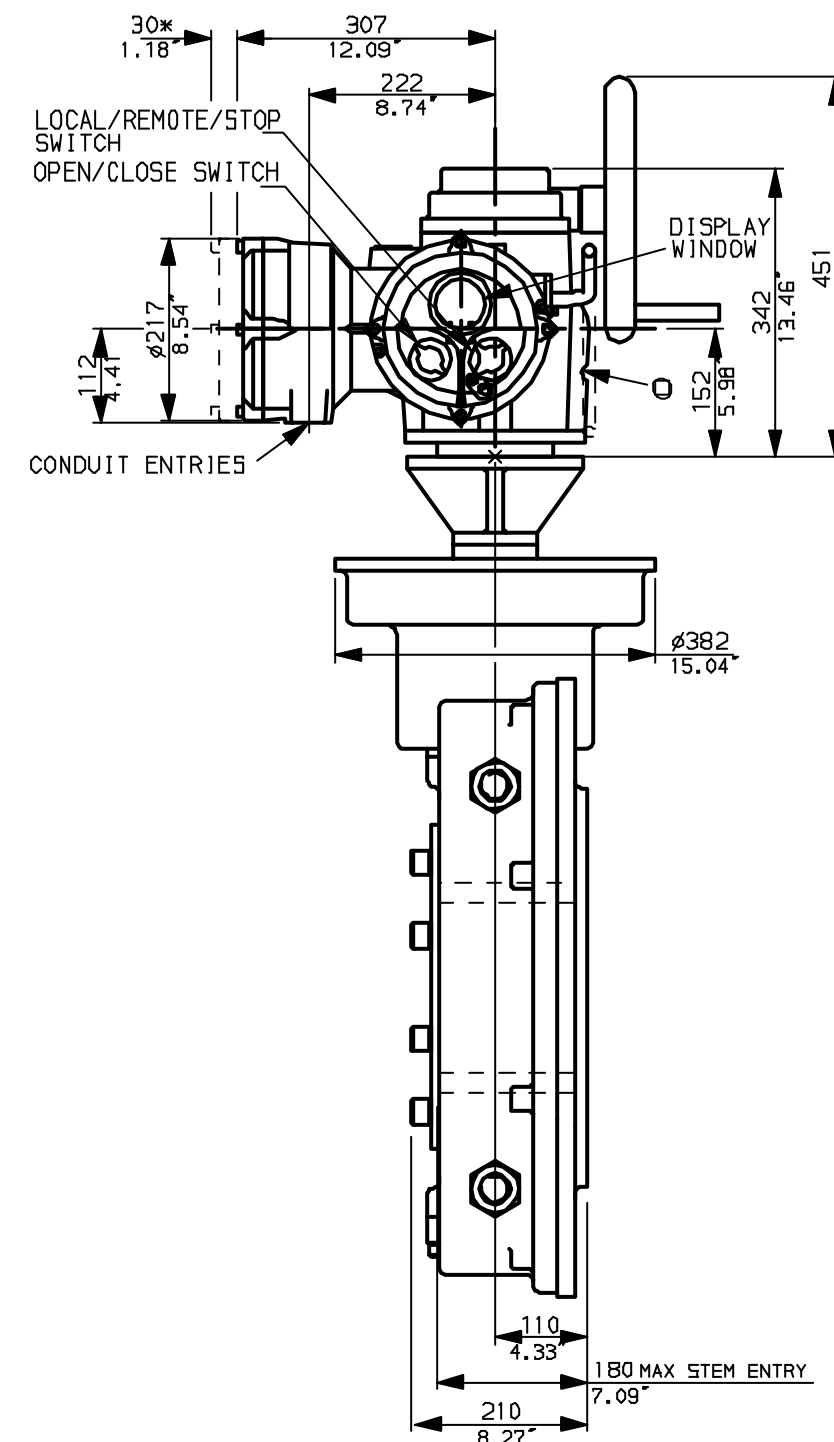
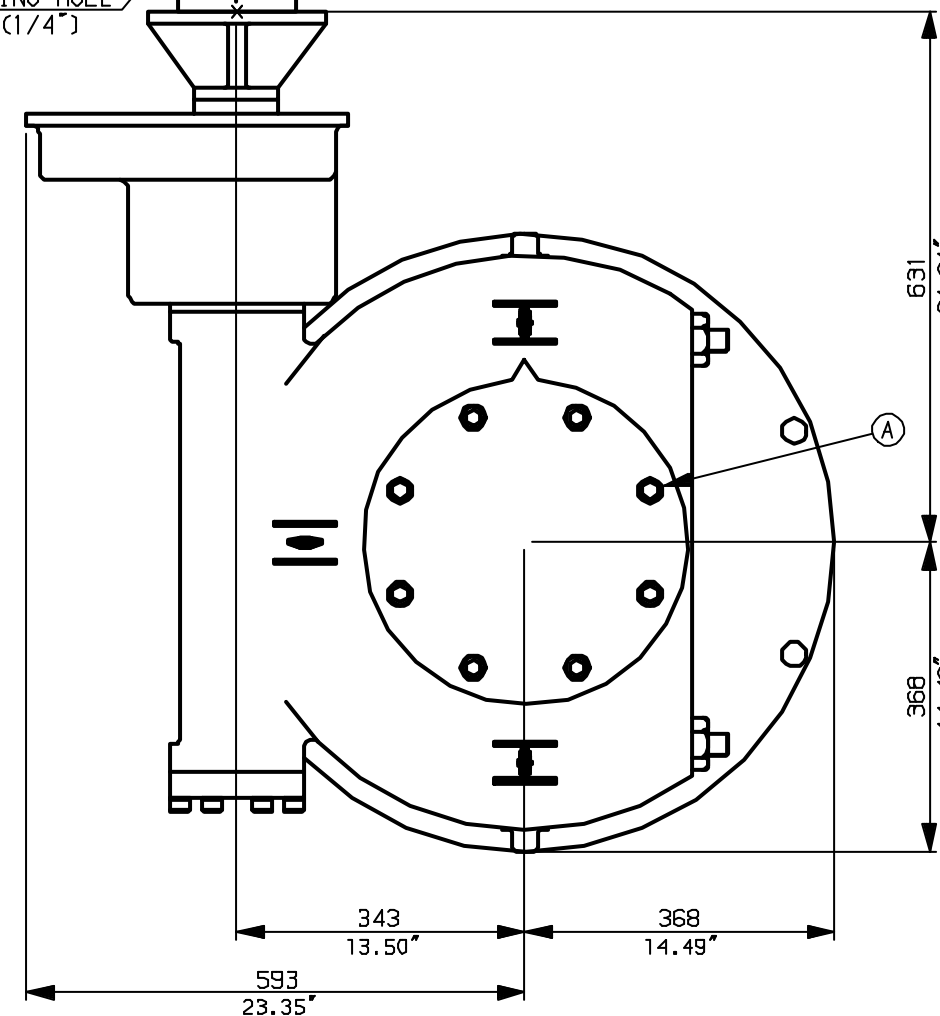
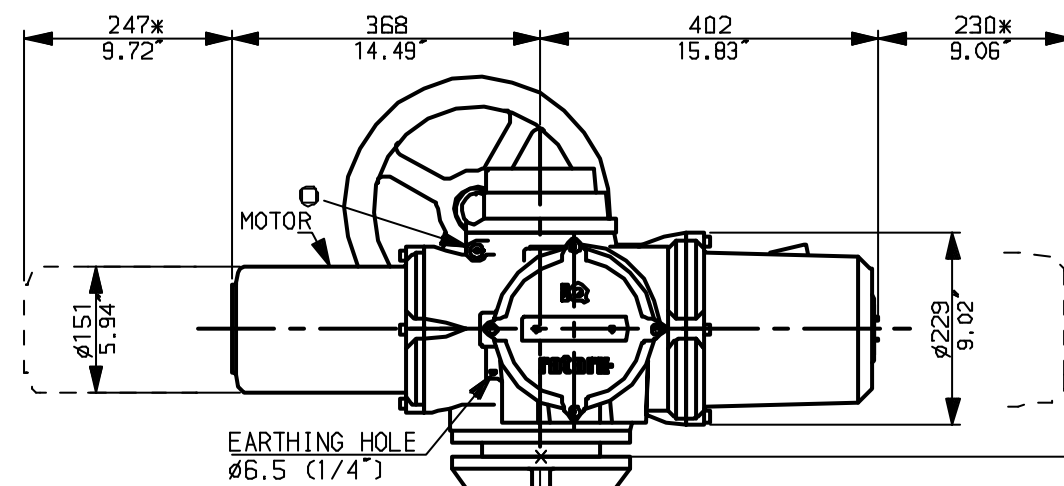
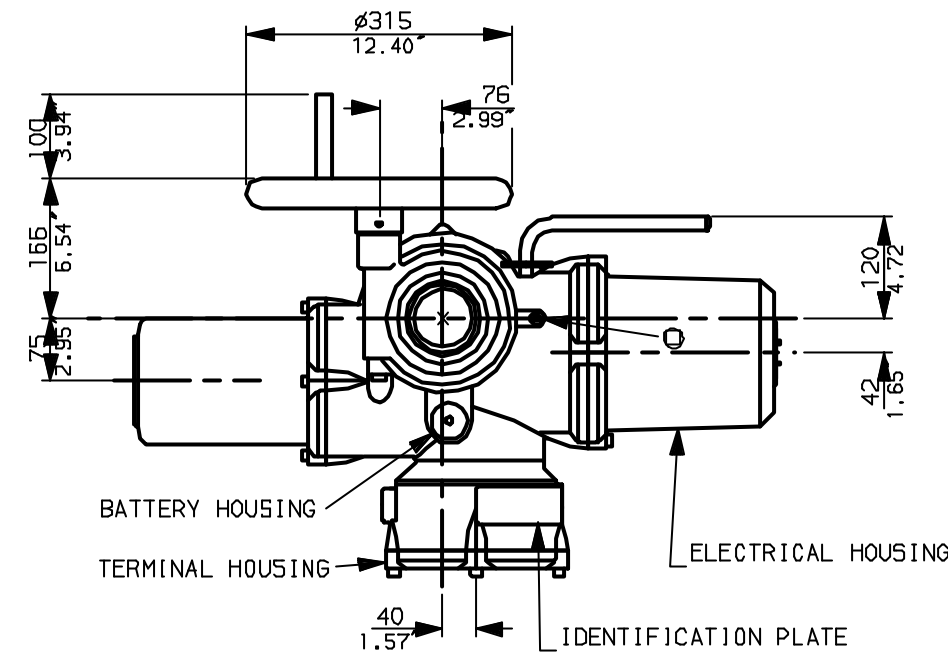
Rotork Controls Ltd.  
 Bath England, BA1 3JQ.  
 (Phone 01225-733200)  
 Rotork Controls Inc.  
 Rochester, NY 14624  
 (Phone 585-328-1550)

|   |                      |                |
|---|----------------------|----------------|
| Title IQ35 (+IQS35), THW, IW (MOW) 10R, |                      |                |
| STANDARD DIMENSIONAL DATA               |                      |                |
| Drawn CAD                               | Checked PRE          | Ref Data Sheet |
| Date April 04                           | Job No IQ35THW_IW10R |                |

|                |                        |
|----------------|------------------------|
| 01<br>Issue    | First Issue.           |
| Scale 1:9      | THIRD ANGLE PROJECTION |
| Drawing Number | IQ35THW_IW10R          |

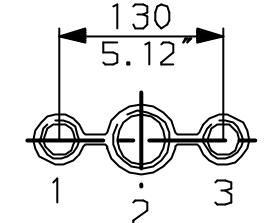
1 | 2 | 3 | 4 | 5 | 6 | 7 | 8 | 9 | 10

G  
F  
E  
D  
C  
B  
A



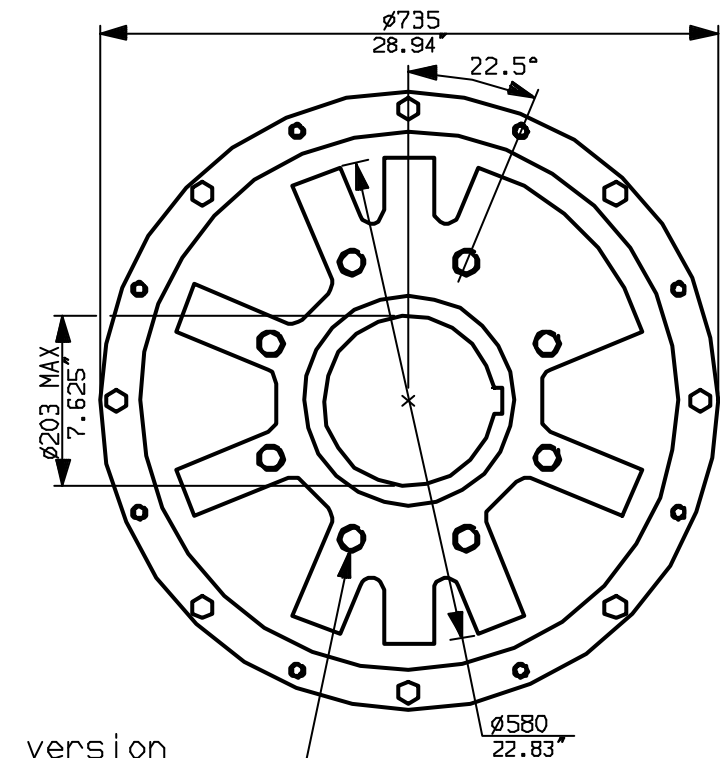
**NOTES:**  
 \* DIMENSIONS WITH '\*' INDICATE COVER REMOVAL ALLOWANCE  
 : NETT WEIGHT = 483kg (1063lbs)  
 :  $\phi$  = OIL FILLER/DRAIN PLUG  
 : THE INTERFACE PROVIDED FOR MOUNTING THE ACTUATOR OR SECOND STAGE GEARBOX ONTO THE VALVE SHOULD CONFORM TO GOOD ENGINEERING PRACTICES, ENSURING ADEQUATELY TOLERANCED LIMITS FOR PARALLELISM, PERPENDICULARITY AND CONCENTRICITY.

**CONDUIT ENTRIES (N.T.S)**



Nos.1 & 3 TAPPED 1" NPT  
 No.2 TAPPED 1 1/2" NPT  
 STD ALTERNATIVES IF SPECIFIED  
 2 X M25, 1 X M40  
 2 X PG16, 1 X PG29

N.B. KEYWAY POS. CAN BE MOVED IN 45° STEPS BY REMOVING 8 SCREWS MARKED (A) AND ROTATING OUTPUT SLEEVE.



**"F" version**

8 HOLES TAPPED M30 x 36 DEEP, EQUI-SPACED OFF CENTRES ON A 356 P.C.D. (150 5211-F35).

**"FA" version**

8 HOLES TAPPED 1" UNC x 1.42" dp, EQUI-SPACED OFF CENTRES ON A 14" PCD (MSS SP101-FA35).

**rotork**  
www.rotork.com

Rotork Controls Ltd.  
 Bath England, BA1 3JQ.  
 (Phone 01225-733200)  
 Rotork Controls Inc.  
 Rochester, NY 14624  
 (Phone 585-328-1550)

Title IQ35 (+IQS35), SHW, IW (MOW) 10R,  
 STANDARD DIMENSIONAL DATA  
 Drawn CAD Checked PRE Ref Data Sheet  
 Date April 04 Job No IQ35SHW\_IW10R

|                   |                            |
|-------------------|----------------------------|
| 01<br>Issue       | First Issue.               |
| Scale             | 1:9 THIRD ANGLE PROJECTION |
| Drawing<br>Number | IQ35SHW_IW10R              |

1 | 2 | 3 | 4 | 5 | 6 | 7 | 8 | 9 | 10