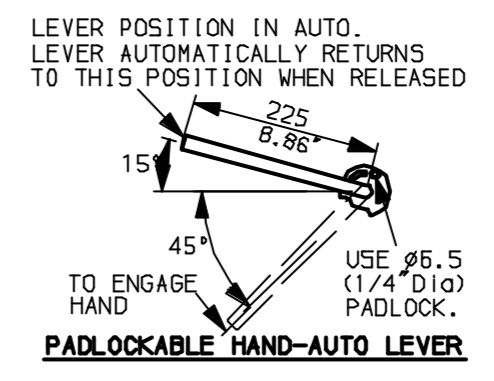
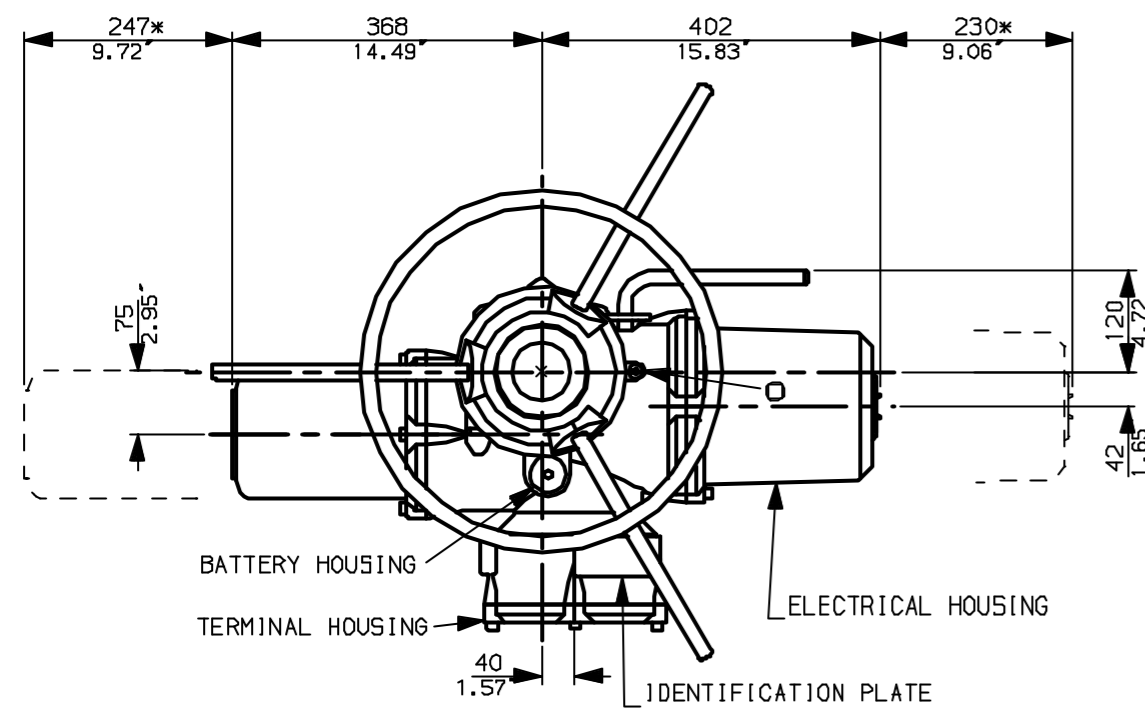
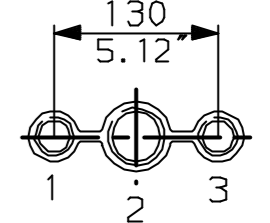


G  
F  
E  
D  
C  
B  
A

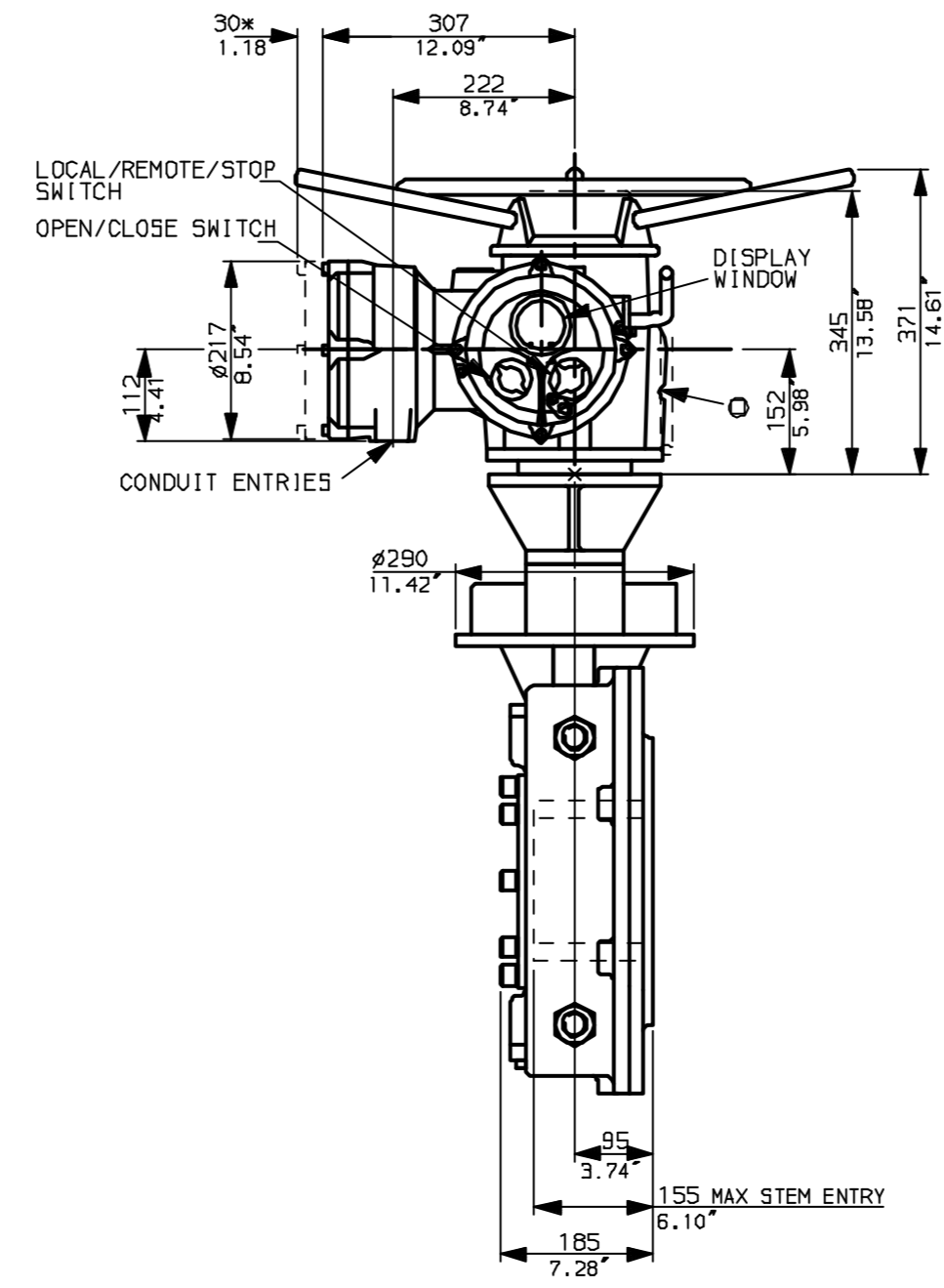
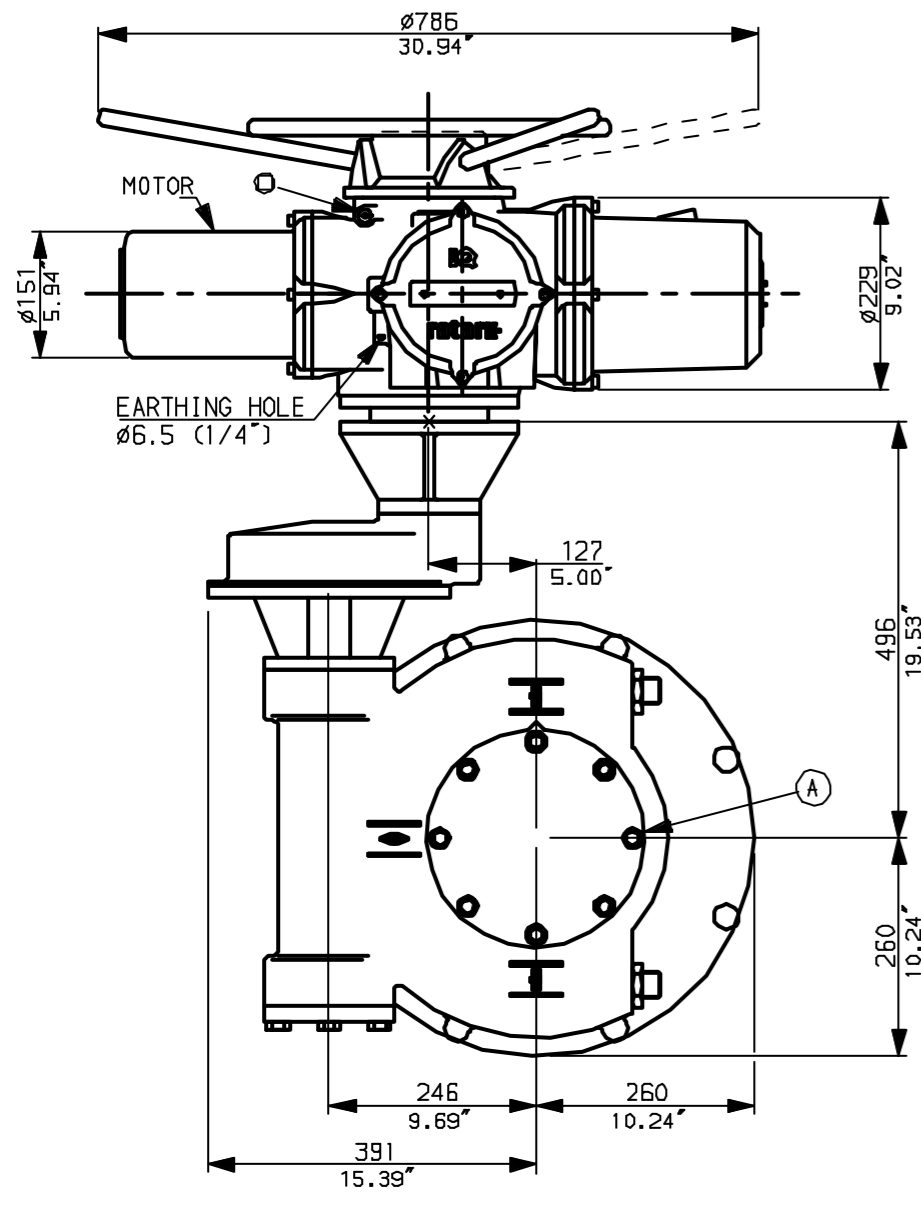


NOTES:  
 DIMENSIONS WITH '\*' INDICATE COVER REMOVAL ALLOWANCE  
 NETT WEIGHT = 287kg (631 lbs)  
 ○ = OIL FILLER/DRAIN PLUG  
 THE INTERFACE PROVIDED FOR MOUNTING THE ACTUATOR OR SECOND STAGE GEARBOX ONTO THE VALVE SHOULD CONFORM TO GOOD ENGINEERING PRACTICES, ENSURING ADEQUATELY TOLERANCED LIMITS FOR PARALLELISM, PERPENDICULARITY AND CONCENTRICITY.

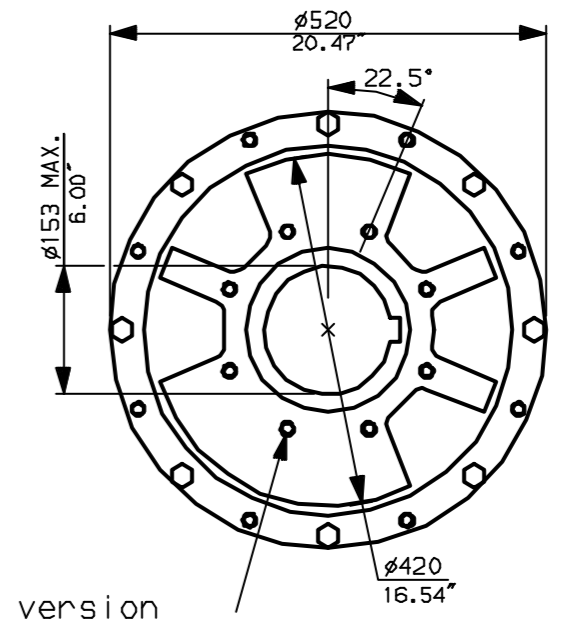
**CONDUIT ENTRIES** (N.T.S)



Nos.1 & 3 TAPPED 1" NPT  
 No.2 TAPPED 1 1/2" NPT  
 STD ALTERNATIVES IF SPECIFIED  
 2 X M25, 1 X M40  
 2 X PG16, 1 X PG29



N.B. KEYWAY POS. CAN BE MOVED 90 OR 180° BY REMOVING 8 SCREWS MARKED (A) AND ROTATING OUTPUT SLEEVE.



"F" version  
 8 HOLES TAPPED M16 x 30 DP  
 EQUI-SPACED AS SHOWN ON A  
 254 PCD (ISO 5211-F25).

"FA" version  
 8 HOLES TAPPED 5/8" UNC x 1.18" dp  
 EQUI-SPACED AS SHOWN ON A  
 10" PCD (MSS SP101-FA25).

NOTE:  
 Gearbox is shown with LOW Ratio Input Reducer.  
 (ie Ratios 120,180,240,360)  
 See Data Sheet with IWBRL for HIGH ratio option.



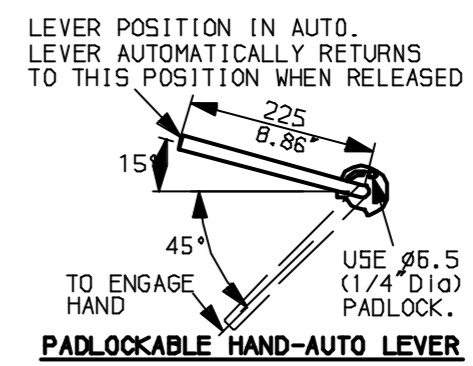
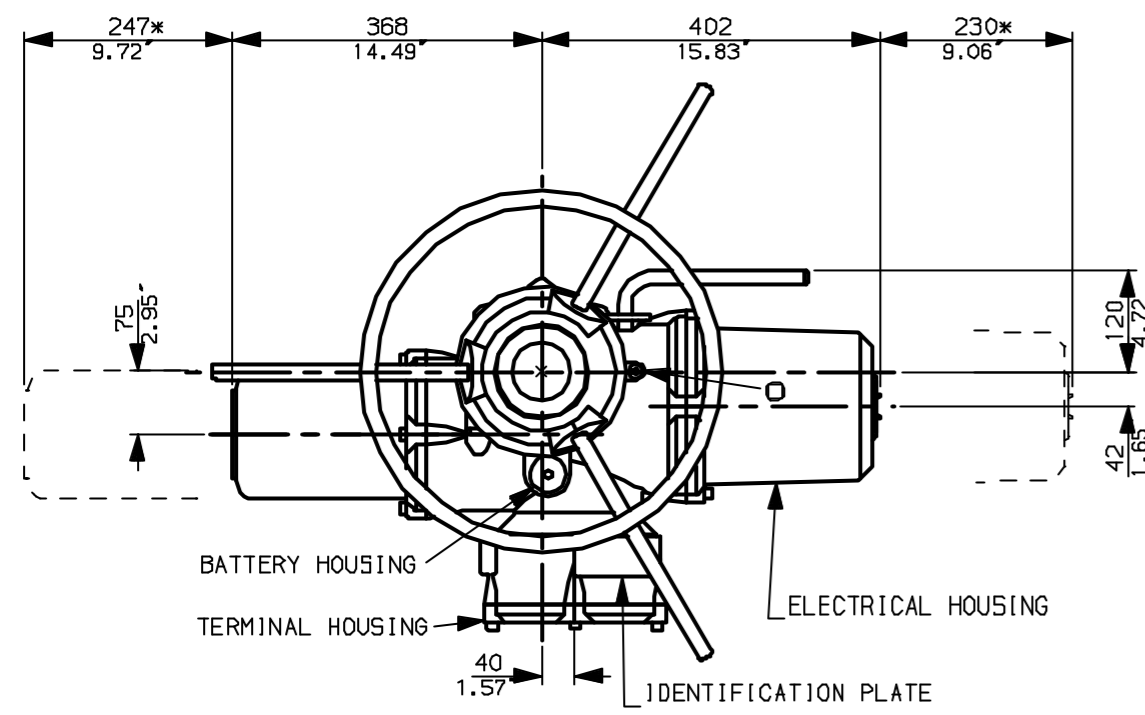
Rotork Controls Ltd.  
 Bath England, BA1 3JQ.  
 (Phone 01225-733200)  
 Rotork Controls Inc.  
 Rochester, NY 14624  
 (Phone 585-328-1550)

Title IQ35 (+IQ535), THW, IW (MOW) 8 (+82+85) RL		
STANDARD DIMENSIONAL DATA		
Drawn CAD	Checked PRE	Ref Data Sheet
Date April 04	Job No	<b>IQ35THW_IWBRL</b>

01	First Issue.
Scale	1:9 THIRD ANGLE PROJECTION
Drawing Number	<b>IQ35THW_IWBRL</b>

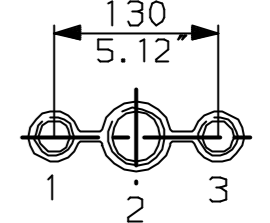
1 | 2 | 3 | 4 | 5 | 6 | 7 | 8 | 9 | 10

G  
F  
E  
D  
C  
B  
A

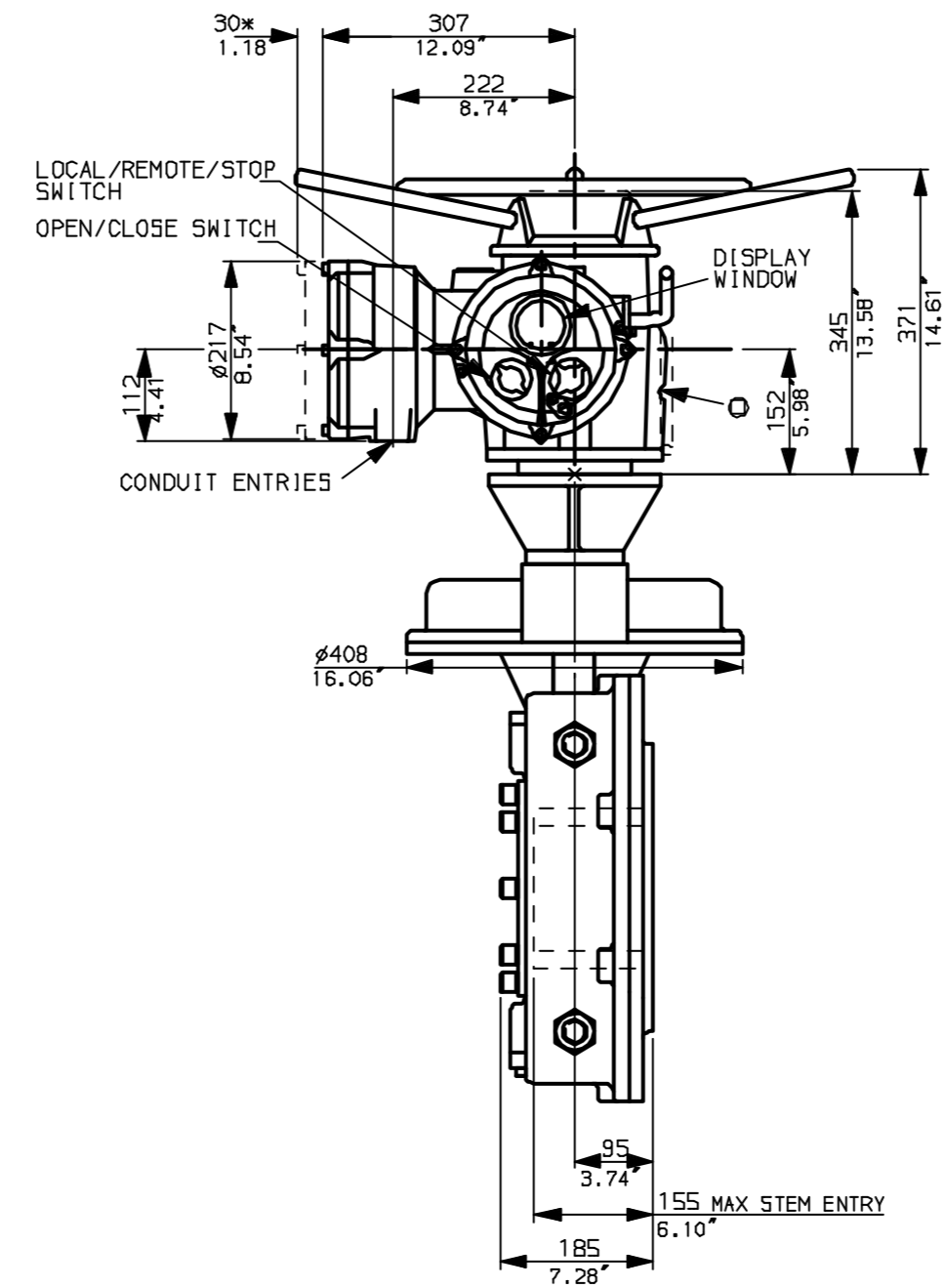
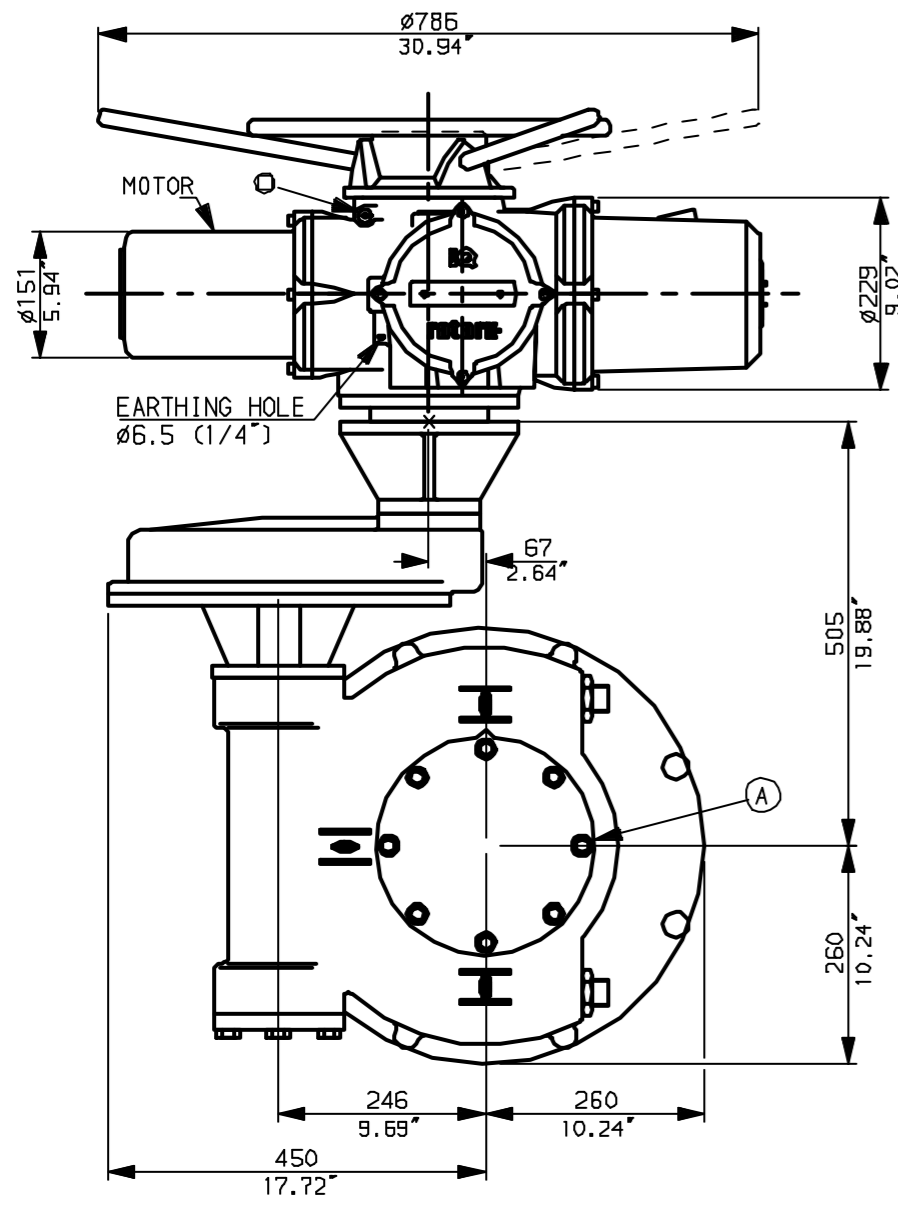


NOTES:  
 \* DIMENSIONS WITH '\*' INDICATE COVER REMOVAL ALLOWANCE  
 : NETT WEIGHT = 297kg (653lbs)  
 : = OIL FILLER/DRAIN PLUG  
 : THE INTERFACE PROVIDED FOR MOUNTING THE ACTUATOR OR SECOND STAGE GEARBOX ONTO THE VALVE SHOULD CONFORM TO GOOD ENGINEERING PRACTICES, ENSURING ADEQUATELY TOLERANCED LIMITS FOR PARALLELISM, PERPENDICULARITY AND CONCENTRICITY.

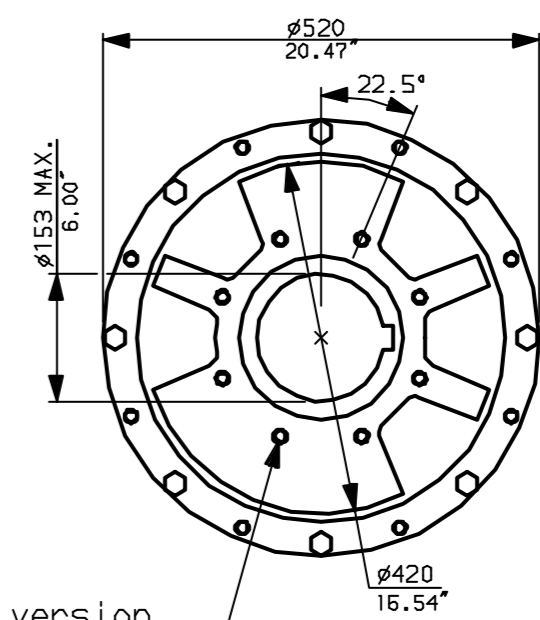
**CONDUIT ENTRIES** (N.T.S)



Nos.1 & 3 TAPPED 1" NPT  
 No.2 TAPPED 1 1/2" NPT  
 STD ALTERNATIVES IF SPECIFIED  
 2 X M25, 1 X M40  
 2 X PG16, 1 X PG29



N.B. KEYWAY POS. CAN BE MOVED 90 OR 180° BY REMOVING 8 SCREWS MARKED (A) AND ROTATING OUTPUT SLEEVE.



"F" version  
 8 HOLES TAPPED M16 x 30 DP  
 EQUI-SPACED AS SHOWN ON A  
 254 PCD (150 5211-F25).

"FA" version  
 8 HOLES TAPPED 5/8" UNC x 1.18" dp  
 EQUI-SPACED AS SHOWN ON A  
 10" PCD (MGS SP101-FA25).

NOTE:  
 Gearbox is shown with HIGH Ratio Input Reducer.  
 (ie Ratios 480,540,720)  
 See Data Sheet with IW8RL for LOW ratio option.



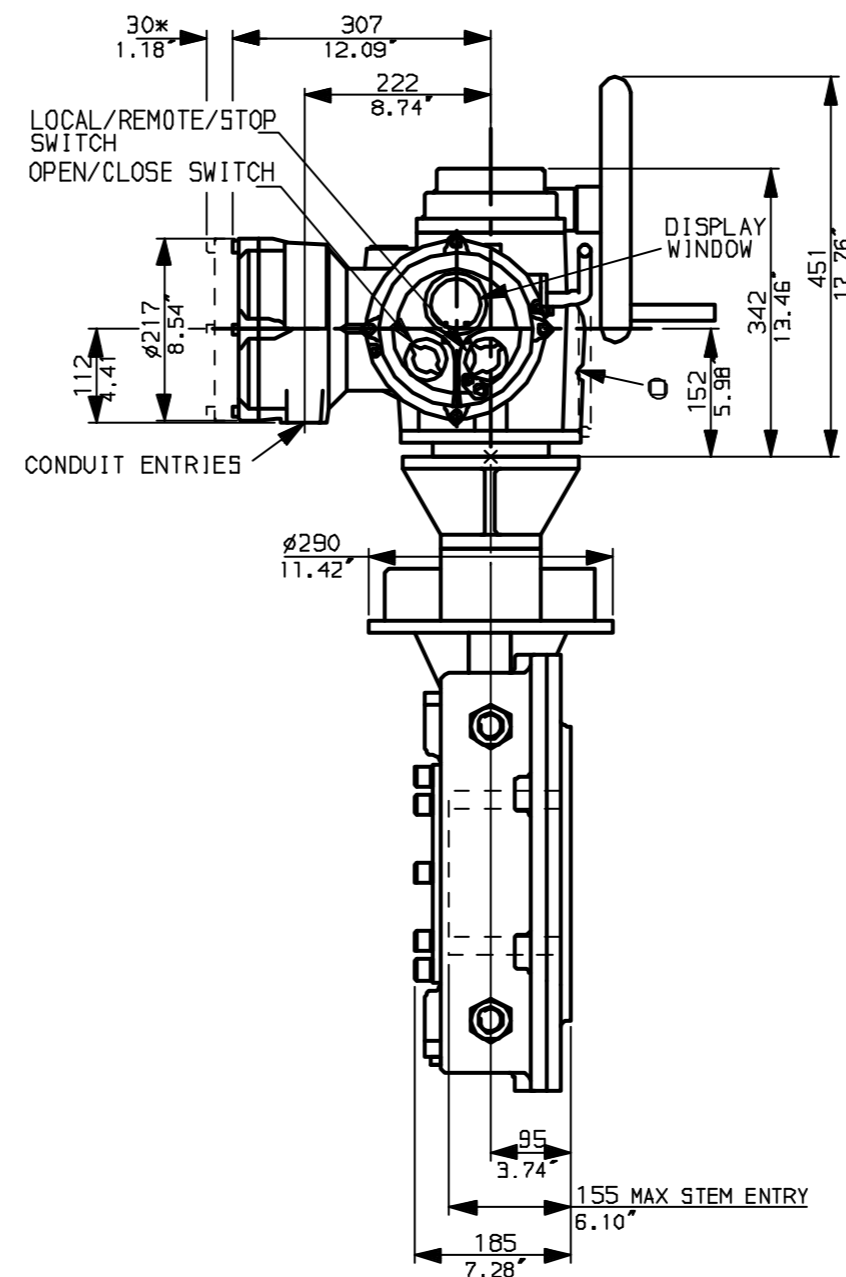
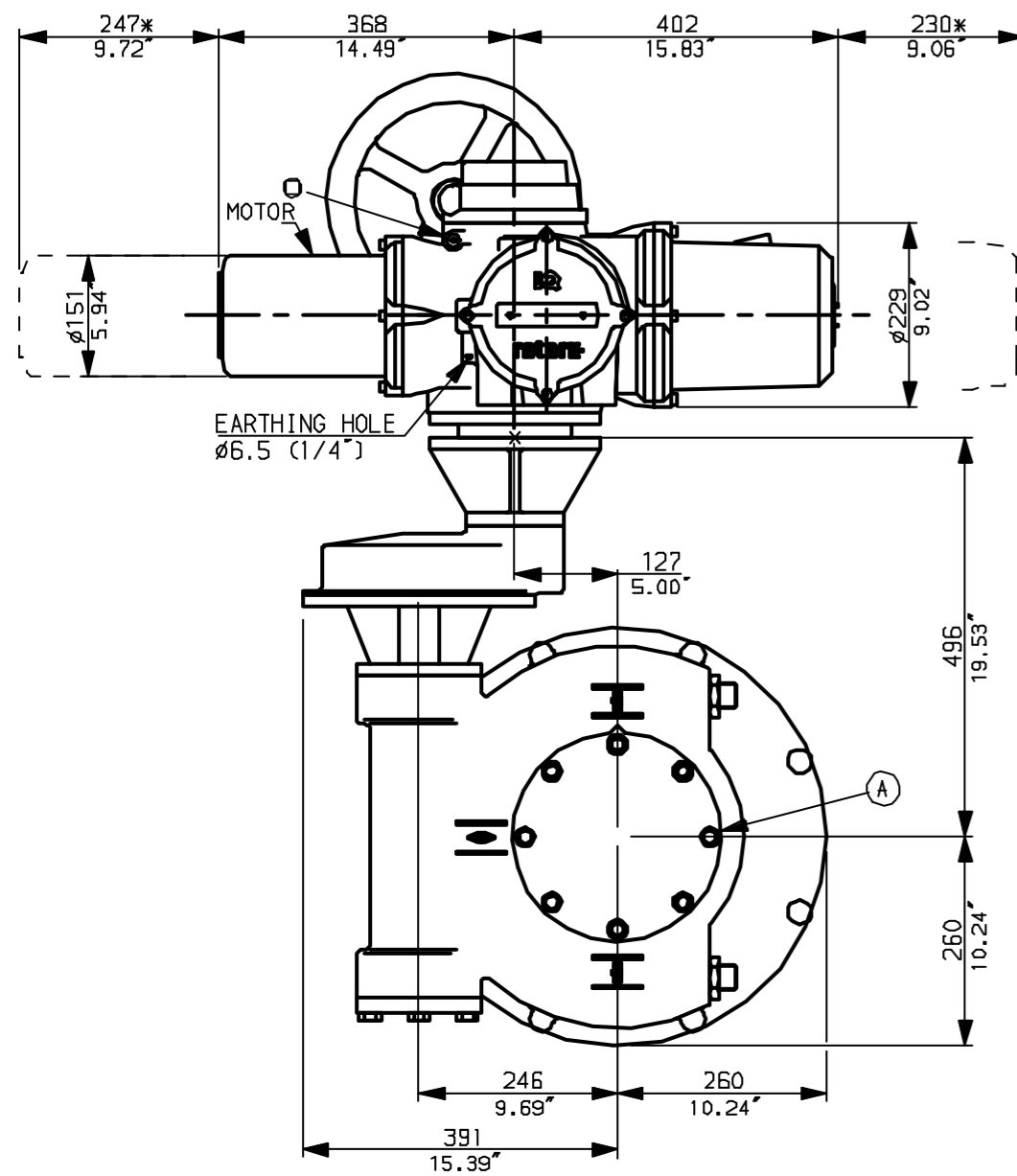
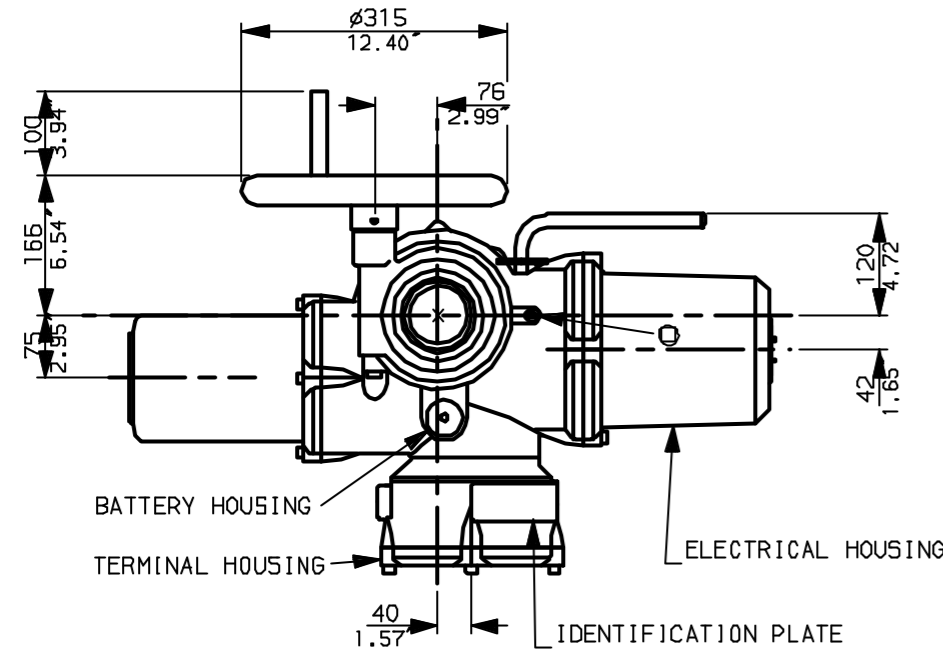
Rotork Controls Ltd.  
 Bath England, BA1 3JQ.  
 (Phone 01225-733200)  
 Rotork Controls Inc.  
 Rochester, NY 14624  
 (Phone 585-328-1550)

Title IQ35 (+IQS35), THW, IW (MOW) 8 (+82+85) Rh,	
STANDARD DIMENSIONAL DATA	
Drawn CAD	Checked PRE Ref Data Sheet
Date April 04	Job No IQ35THW_IW8Rh

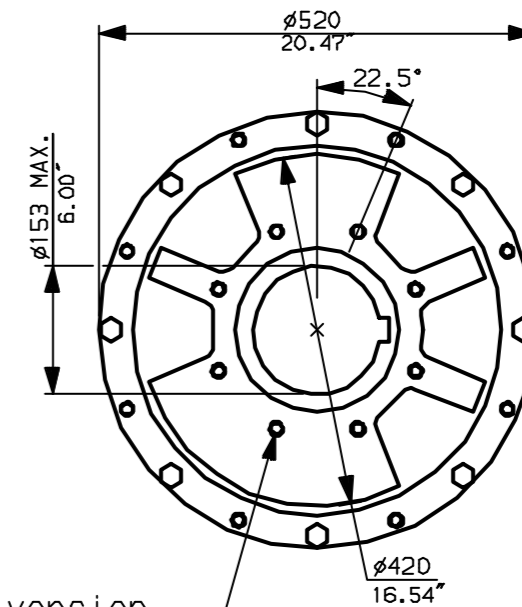
01	First Issue.
Scale	1:9 THIRD ANGLE PROJECTION
Drawing Number	IQ35THW_IW8Rh

1 | 2 | 3 | 4 | 5 | 6 | 7 | 8 | 9 | 10

G  
F  
E  
D  
C  
B  
A

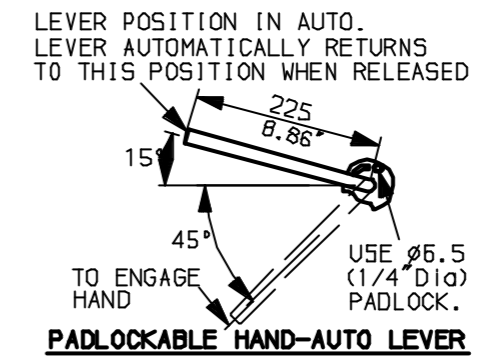


N.B. KEYWAY POS. CAN BE MOVED 90 OR 180° BY REMOVING 8 SCREWS MARKED (A) AND ROTATING OUTPUT SLEEVE.



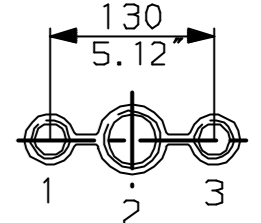
"F" version  
8 HOLES TAPPED M16 x 30 DP  
EQUI-SPACED AS SHOWN ON A  
254 PCD (ISO 5211-F25).

"FA" version  
8 HOLES TAPPED 5/8" UNC x 1.18" dp  
EQUI-SPACED AS SHOWN ON A  
10" PCD (MS SP101-FA25).



NOTES:  
: DIMENSIONS WITH '\*' INDICATE COVER REMOVAL ALLOWANCE  
: NETT WEIGHT = 287kg (631 lbs)  
:  $\phi$  = OIL FILLER/DRAIN PLUG  
: THE INTERFACE PROVIDED FOR MOUNTING THE ACTUATOR OR SECOND STAGE GEARBOX ONTO THE VALVE SHOULD CONFORM TO GOOD ENGINEERING PRACTICES, ENSURING ADEQUATELY TOLERANCED LIMITS FOR PARALLELISM, PERPENDICULARITY AND CONCENTRICITY.

CONDUIT ENTRIES (N.T.S)



Nos.1 & 3 TAPPED 1" NPT  
No.2 TAPPED 1 1/2" NPT  
STD ALTERNATIVES IF SPECIFIED  
2 X M25, 1 X M40  
2 X PG16, 1 X PG29

NOTE:  
Gearbox is shown with LOW Ratio Input Reducer.  
(ie Ratios 120,180,240,360)  
See Data Sheet with IWBRL for HIGH ratio option.

**rotork**  
www.rotork.com

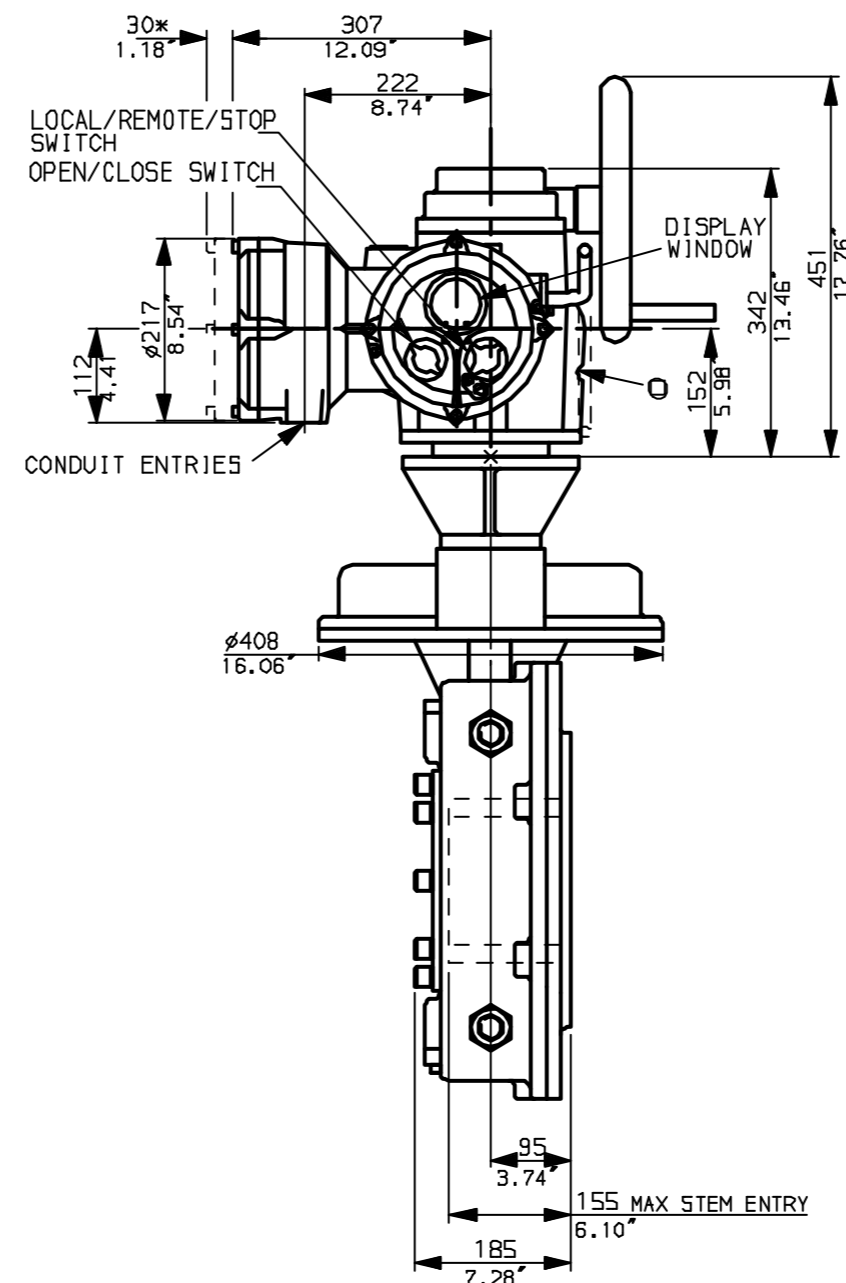
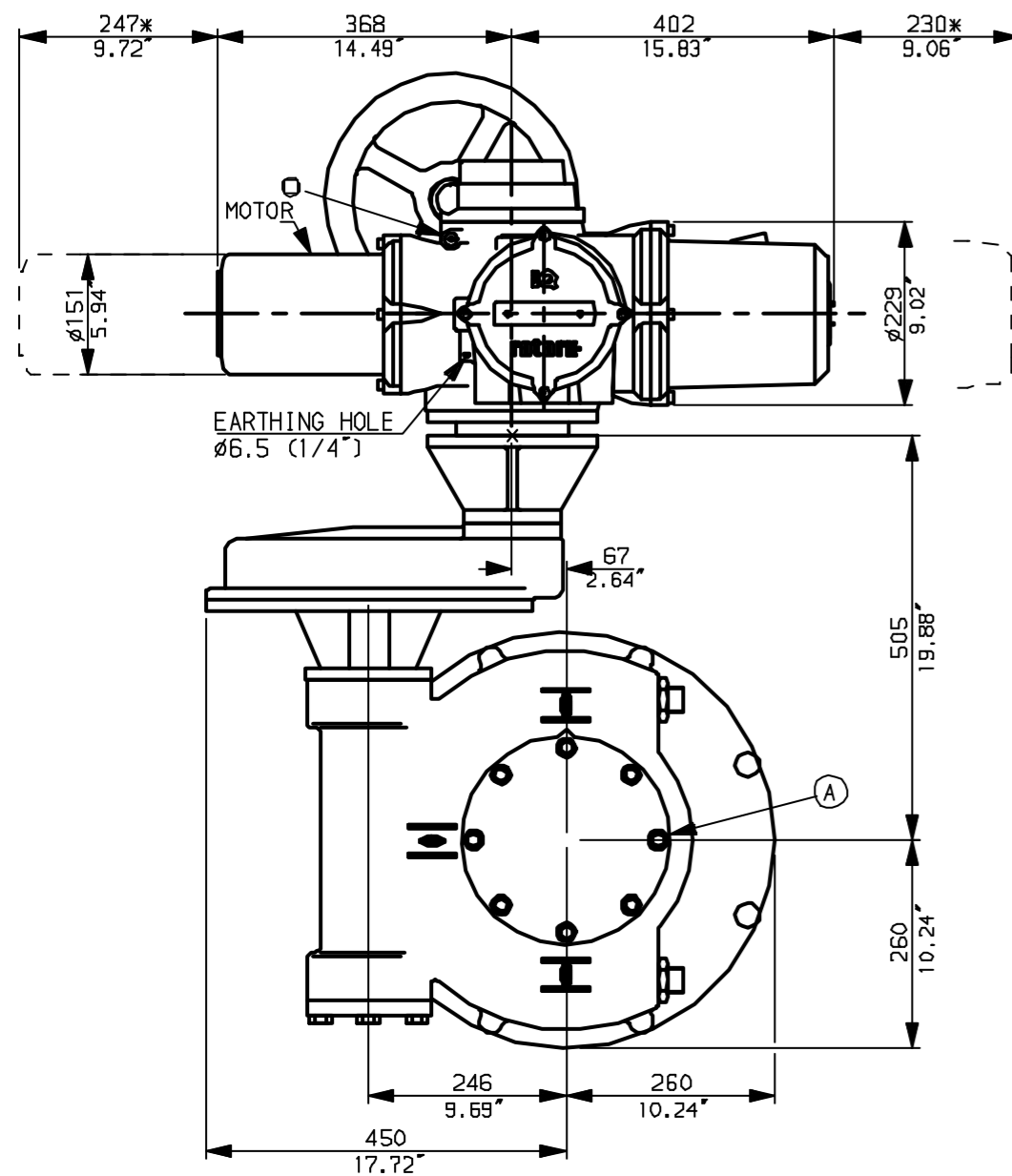
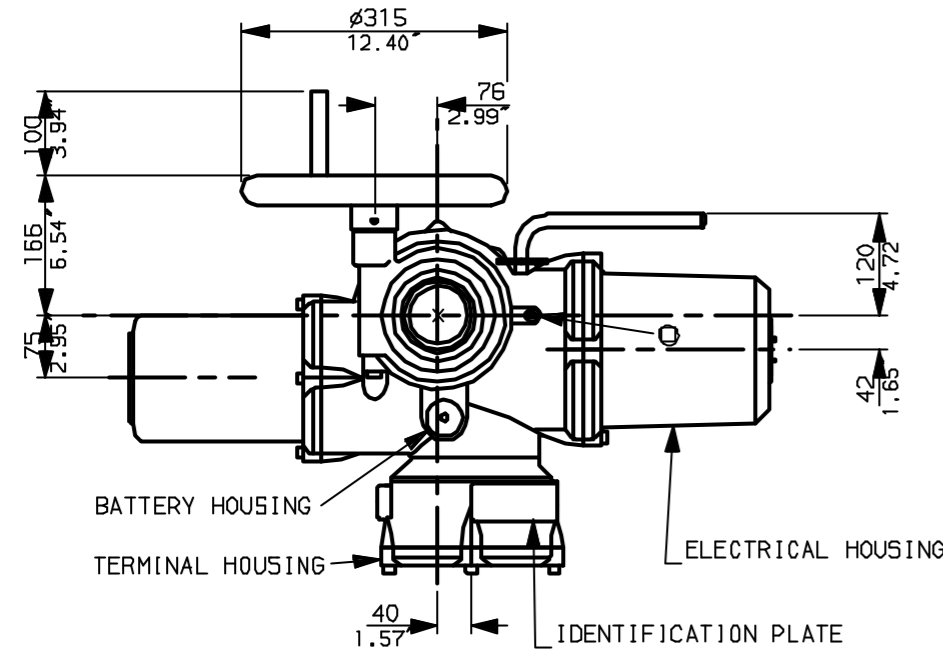
Rotork Controls Ltd.  
Bath England, BA1 3JQ.  
(Phone 01225-733200)  
Rotork Controls Inc.  
Rochester, NY 14624  
(Phone 585-328-1550)

Title IQ35 (+IQ535), SHW, IW (MOW) 8 (+85+85) RL		
STANDARD DIMENSIONAL DATA		
Drawn CAD	Checked PRE	Ref Data Sheet
Date April 04	Job No	<b>IQ35SHW_IWBRL</b>

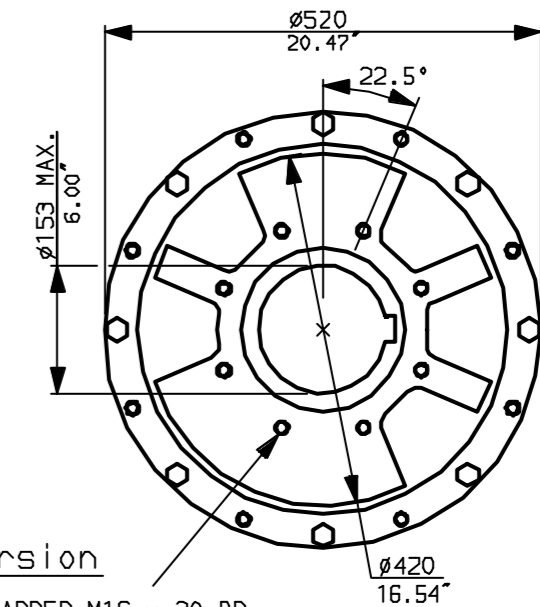
01	First Issue.
Scale	1:9 THIRD ANGLE PROJECTION
Drawing Number	<b>IQ35SHW_IWBRL</b>

1 | 2 | 3 | 4 | 5 | 6 | 7 | 8 | 9 | 10

G  
F  
E  
D  
C  
B  
A



N.B. KEYWAY POS. CAN BE MOVED 90° OR 180° BY REMOVING 8 SCREWS MARKED (A) AND ROTATING OUTPUT SLEEVE.

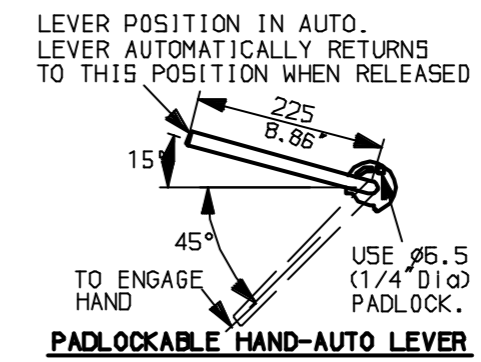


"F" version

8 HOLES TAPPED M16 x 30 DP EQUI-SPACED AS SHOWN ON A 254 PCD (ISO 5211-F25).

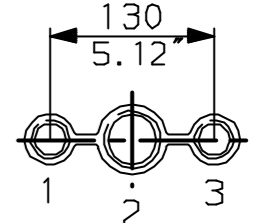
"FA" version

8 HOLES TAPPED 5/8" UNC x 1.18" dp EQUI-SPACED AS SHOWN ON A 10" PCD (MS5 SP101-FA25).



NOTES:  
 \* DIMENSIONS WITH '\*' INDICATE COVER REMOVAL ALLOWANCE  
 : NETT WEIGHT = 297kg (653lbs)  
 :  $\phi$  = OIL FILLER/DRAIN PLUG  
 : THE INTERFACE PROVIDED FOR MOUNTING THE ACTUATOR OR SECOND STAGE GEARBOX ONTO THE VALVE SHOULD CONFORM TO GOOD ENGINEERING PRACTICES, ENSURING ADEQUATELY TOLERANCED LIMITS FOR PARALLELISM, PERPENDICULARITY AND CONCENTRICITY.

CONDUIT ENTRIES (N.T.S)



Nos.1 & 3 TAPPED 1" NPT  
 No.2 TAPPED 1 1/2" NPT  
 STD ALTERNATIVES IF SPECIFIED  
 2 X M25, 1 X M40  
 2 X PG16, 1 X PG29

**rotork**  
www.rotork.com

Rotork Controls Ltd.  
Bath England, BA1 3JQ.  
(Phone 01225-733200)  
Rotork Controls Inc.  
Rochester, NY 14624  
(Phone 585-328-1550)

Title IQ35 (+IQS35), SHW, IW8 (+82+85) Rh,		
STANDARD DIMENSIONAL DATA		
Drawn CAD	Checked PRE	Ref Data Sheet
Date April 04	Job No	IQ35SHW_IW8Rh

NOTE:  
 Gearbox is shown with HIGH Ratio Input Reducer.  
 (ie Ratios 480,540,720)  
 See Data Sheet with IW8RL for LOW ratio option.

01	First Issue.
Scale	1:9 THIRD ANGLE PROJECTION
Drawing Number	IQ35SHW_IW8Rh

1 | 2 | 3 | 4 | 5 | 6 | 7 | 8 | 9 | 10