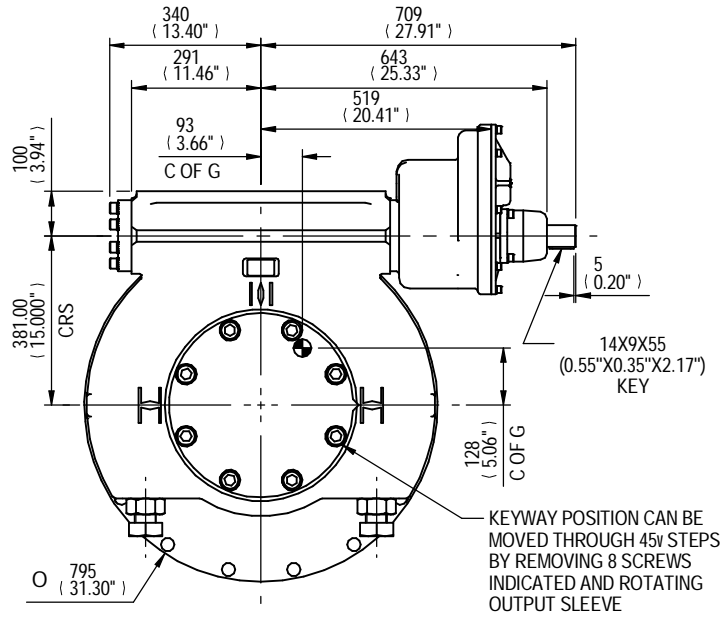
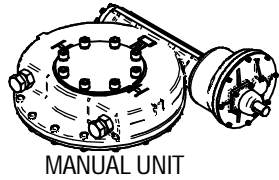


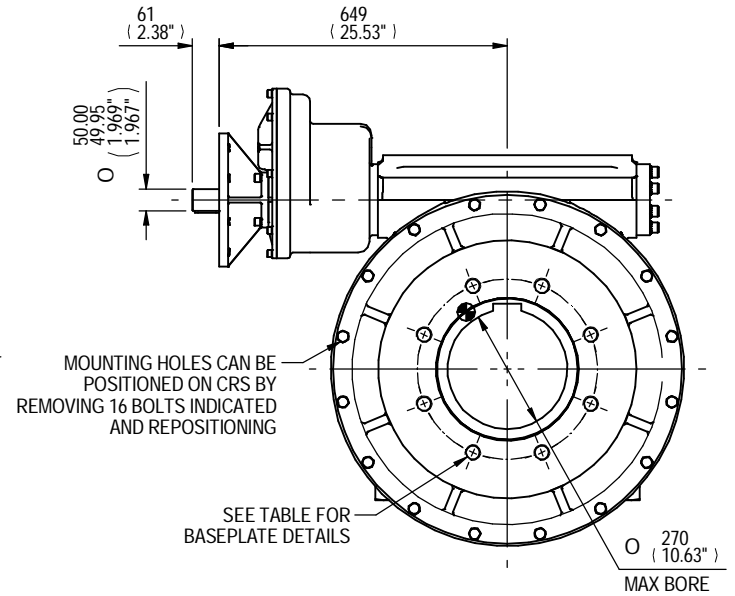
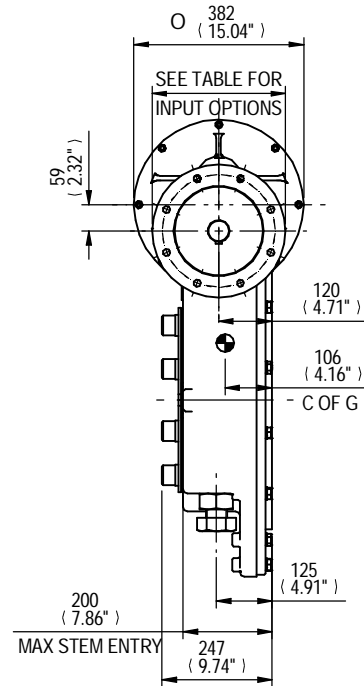
Drawing Number  
**PUB-IW115IR35BB**



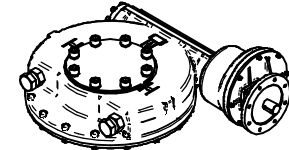
**VIEWS SHOWING MANUAL OPERATED UNIT RATIOS 360/ 490/ 560/ 650/ 760/ 900**



**MANUAL UNIT**

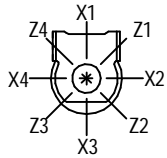


**VIEWS SHOWING MOTORISED OPERATED UNIT RATIOS 360/ 490/ 560/ 650/ 760/ 900**



**MOTORISED UNIT**

PLAN VIEW OF GEARBOX IN CLOSED POSITION SHOWING STANDARD KEYWAY POSITIONS. ALTERNATIVES AVAILABLE ON REQUEST



INPUT FLANGE DETAILS						
	FLANGE O/DIA.	SHAFT DIA.	RECESS DIA.	RECESS DEPTH	HOLE DETAILS (OFF CENTRES)	KEY DETAILS
ISO F14	Ø175 (Ø6.89")	Ø30.00-0.05 (Ø1.181"-0.002")	Ø100.05+0.15 (Ø3.939"+0.006")	5 (0.20")	4 HOLES Ø16.5 (Ø0.65")	8x7x40 (0.31"x0.28"x1.57")
	Ø175 (Ø6.89")	Ø30.00-0.05 (Ø1.181"-0.002")	Ø95.25+0.15 (Ø3.750"+0.006")	5 (0.20")	4 HOLES Ø16.5 (Ø0.65") P.C.	8x7x40 (0.31"x0.28"x1.57")
ISO FA14	Ø175 (Ø6.89")	Ø30.00-0.05 (Ø1.181"-0.002")	Ø95.25+0.15 (Ø3.750"+0.006")	5 (0.20")	4 HOLES Ø16.5 (Ø0.65") P.C.	8x7x40 (0.31"x0.28"x1.57")
	Ø210 (Ø8.27")	Ø30.00-0.05 (Ø1.181"-0.002")	Ø130.05+0.15 (Ø5.120"+0.006")	5 (0.20")	4 HOLES Ø20.5 (Ø0.81")	8x7x40 (0.31"x0.28"x1.57")
ISO F16	Ø210 (Ø8.27")	Ø30.00-0.05 (Ø1.181"-0.002")	Ø126.92+0.18 (Ø4.997"+0.007")	5 (0.20")	4 HOLES Ø20.5 (Ø0.81") P.C.	8x7x40 (0.31"x0.28"x1.57")
	Ø210 (Ø8.27")	Ø30.00-0.05 (Ø1.181"-0.002")	Ø126.92+0.18 (Ø4.997"+0.007")	5 (0.20")	4 HOLES Ø20.5 (Ø0.81") P.C.	8x7x40 (0.31"x0.28"x1.57")
ISO FA16	Ø210 (Ø8.27")	Ø30.00-0.05 (Ø1.181"-0.002")	Ø126.92+0.18 (Ø4.997"+0.007")	5 (0.20")	4 HOLES Ø20.5 (Ø0.81") P.C.	8x7x40 (0.31"x0.28"x1.57")
	Ø300 (Ø11.81")	Ø50.00-0.05 (Ø1.969"-0.002")	Ø200.10+0.10 (Ø7.878"+0.004")	5 (0.20")	8 HOLES Ø16.5 (Ø0.65")	14x9x55 (0.55"x0.35"x2.17")
ISO F25	Ø300 (Ø11.81")	Ø50.00-0.05 (Ø1.969"-0.002")	Ø200.10+0.10 (Ø7.878"+0.004")	5 (0.20")	8 HOLES Ø16.5 (Ø0.65") P.C.	14x9x55 (0.55"x0.35"x2.17")
	Ø300 (Ø11.81")	Ø50.00-0.05 (Ø1.969"-0.002")	Ø200.10+0.10 (Ø7.878"+0.004")	5 (0.20")	8 HOLES Ø16.5 (Ø0.65") P.C.	14x9x55 (0.55"x0.35"x2.17")
ISO FA25	Ø300 (Ø11.81")	Ø50.00-0.05 (Ø1.969"-0.002")	Ø200.10+0.10 (Ø7.878"+0.004")	5 (0.20")	8 HOLES Ø16.5 (Ø0.65") P.C.	14x9x55 (0.55"x0.35"x2.17")
	Ø300 (Ø11.81")	Ø50.00-0.05 (Ø1.969"-0.002")	Ø200.10+0.10 (Ø7.878"+0.004")	5 (0.20")	8 HOLES Ø16.5 (Ø0.65") P.C.	14x9x55 (0.55"x0.35"x2.17")

NOTES:  
CENTRE OF GRAVITY IS INDICATIVE ONLY AND CHANGES WITH RATIO

BASEPLATE DETAILS	
ISO 5211	HOLE DETAILS (22.5" OFF CENTRES) 8 HOLES M36x36 (1.42") DEEP
ISO F40	ON Ø406.0 (Ø15.98") P.C.
FA40	8 HOLES 1.25" UNCx36 (1.42") DEEP ON Ø406.4 (Ø16.00") P.C.

MAX BORE SQ KEY		MAX BORE RECTANGULAR KEY	
STD	BORE	BORE	KEY
BS4235	-	270.0	63x32
BS46	-	10"	2.1/2"x1.7/8"
ANSI B17.1	9.4"	2.1/2" SQ	10.125"

AS PART OF CONTINUOUS PRODUCT DEVELOPMENT, ALL DETAILS SUBJECT TO CHANGE WITHOUT PRIOR NOTICE. FOR UP TO DATE DETAILS PLEASE VISIT [www.rotork.com](http://www.rotork.com)

**rotork**  
Gears  
Leeds - UK  
[www.rotork.com](http://www.rotork.com)

Document type	<b>PUBLICITY</b>	Mass	<b>500.8 kg</b>	Title	<b>NW/MOW115/IR35 QUARTER TURN GEARBOX BIG BORE, RATIOS 1190/ 1370/ 1600/ 1910/ 2290/ 2650/ 3100/ 3680/ 4530/ 5390:1</b>
		Dimensions in mm			
		Scale		1:10	
Created	<b>M JONES</b>	<b>10/09/2013</b>	Drawing Number		
Checked	<b>J DODD</b>	<b>12/09/2013</b>	<b>PUB-IW115IR35BB</b>		
Approved			Sheet 1 of 1 Size A3		

Rev.02

Rev	EC	Revised	Approved	Date	Change Description
A	-	-	-	12/09/13	FIRST ISSUE