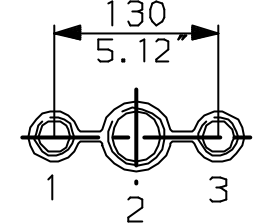
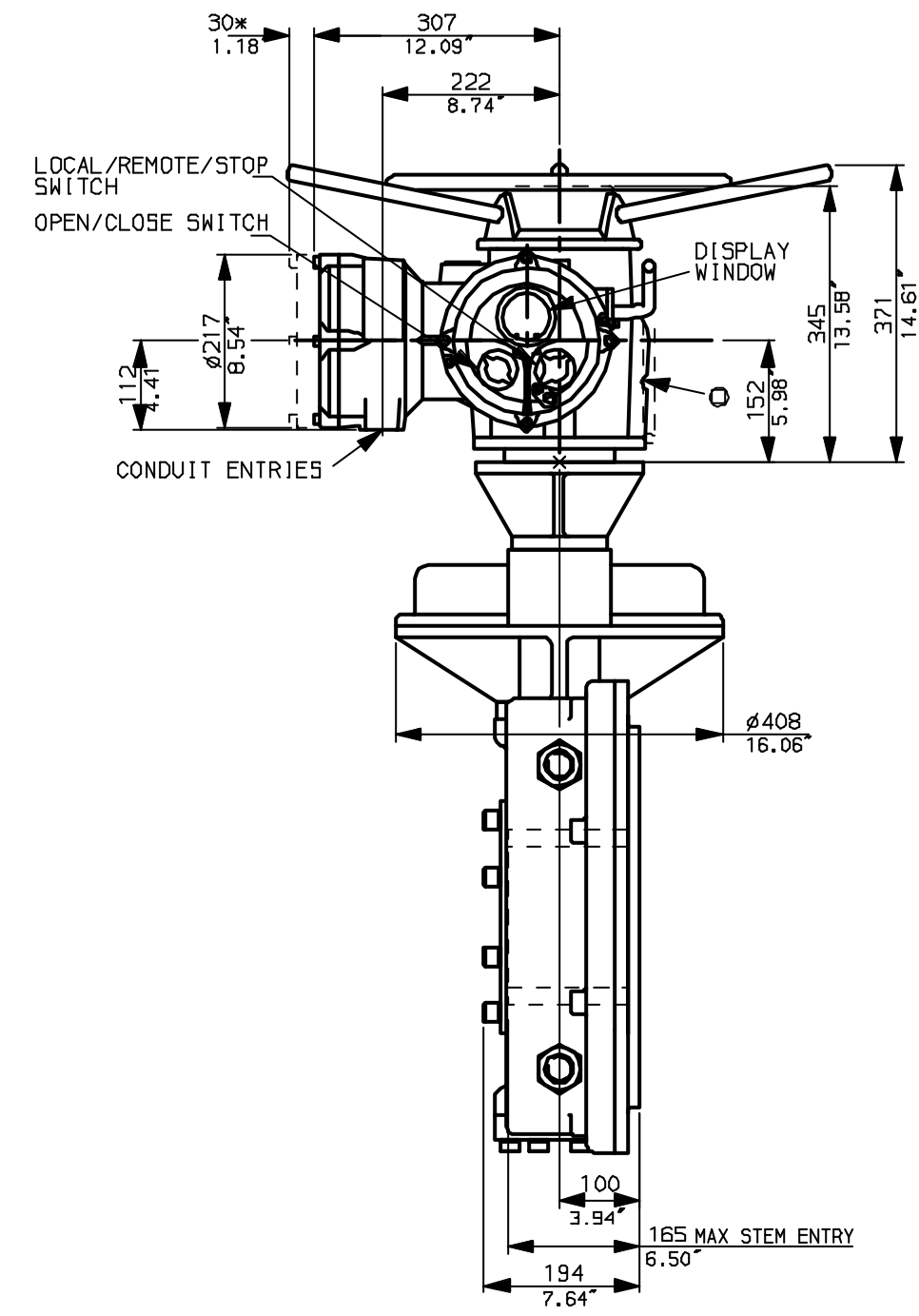
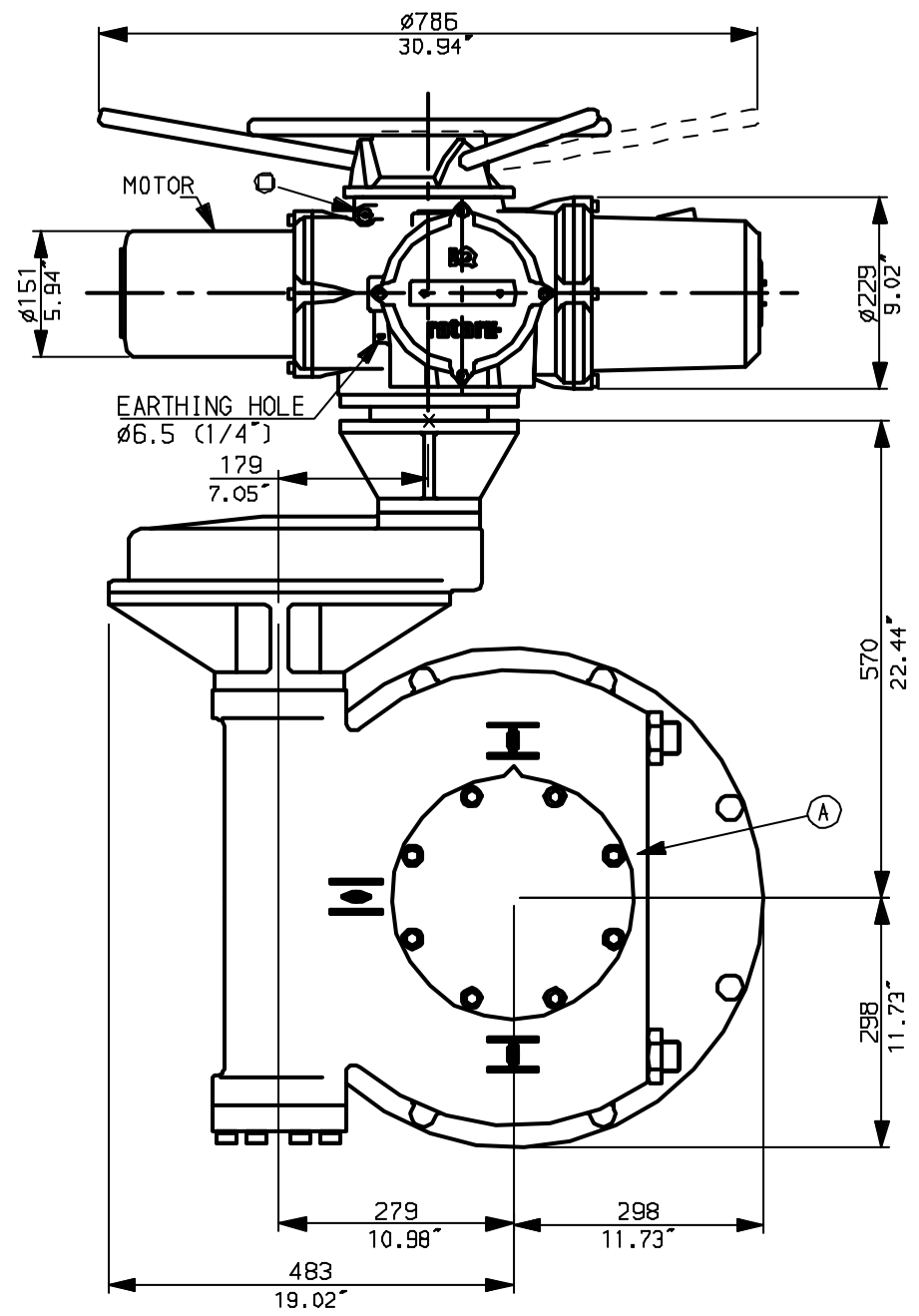


NOTES:  
 \* DIMENSIONS WITH '\*' INDICATE COVER REMOVAL ALLOWANCE  
 : NETT WEIGHT = 337kg (741 lbs)  
 : = OIL FILLER/DRAIN PLUG  
 : THE INTERFACE PROVIDED FOR MOUNTING THE ACTUATOR OR SECOND STAGE GEARBOX ONTO THE VALVE SHOULD CONFORM TO GOOD ENGINEERING PRACTICES, ENSURING ADEQUATELY TOLERANCED LIMITS FOR PARALLELISM, PERPENDICULARITY AND CONCENTRICITY.

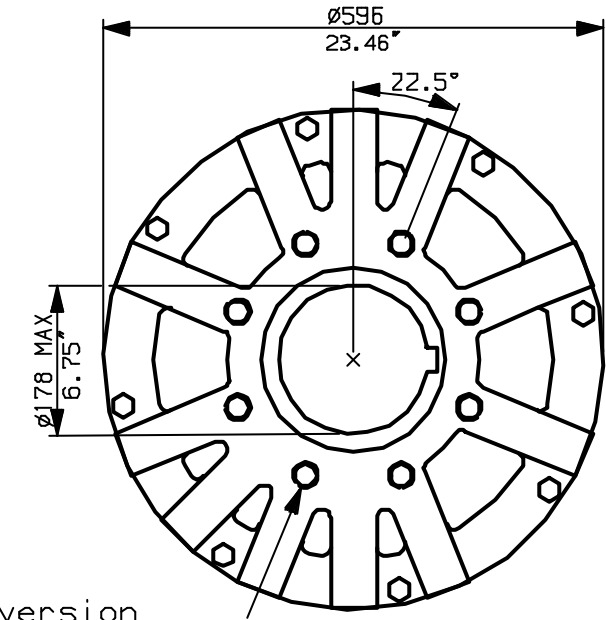
**CONDUIT ENTRIES** (N.T.S)



Nos.1 & 3 TAPPED 1" NPT  
 No.2 TAPPED 1 1/2" NPT  
 STD ALTERNATIVES IF SPECIFIED  
 2 X M25, 1 X M40  
 2 X PG16, 1 X PG29



N.B. KEYWAY POS. CAN BE MOVED IN 45° STEPS BY REMOVING 8 SCREWS MARKED (A) AND ROTATING OUTPUT SLEEVE.



"F" version  
 8 HOLES TAPPED M20 x 30 DP  
 EQUI-SPACED AS SHOWN ON A  
 298 PCD (ISO 5211-F30).

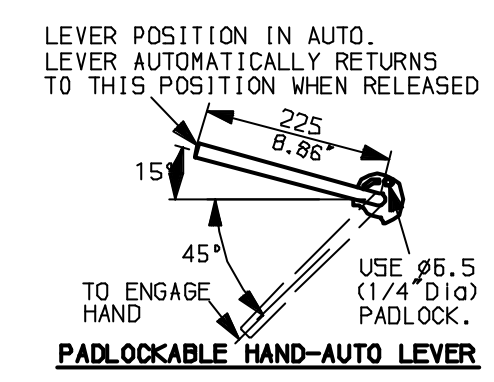
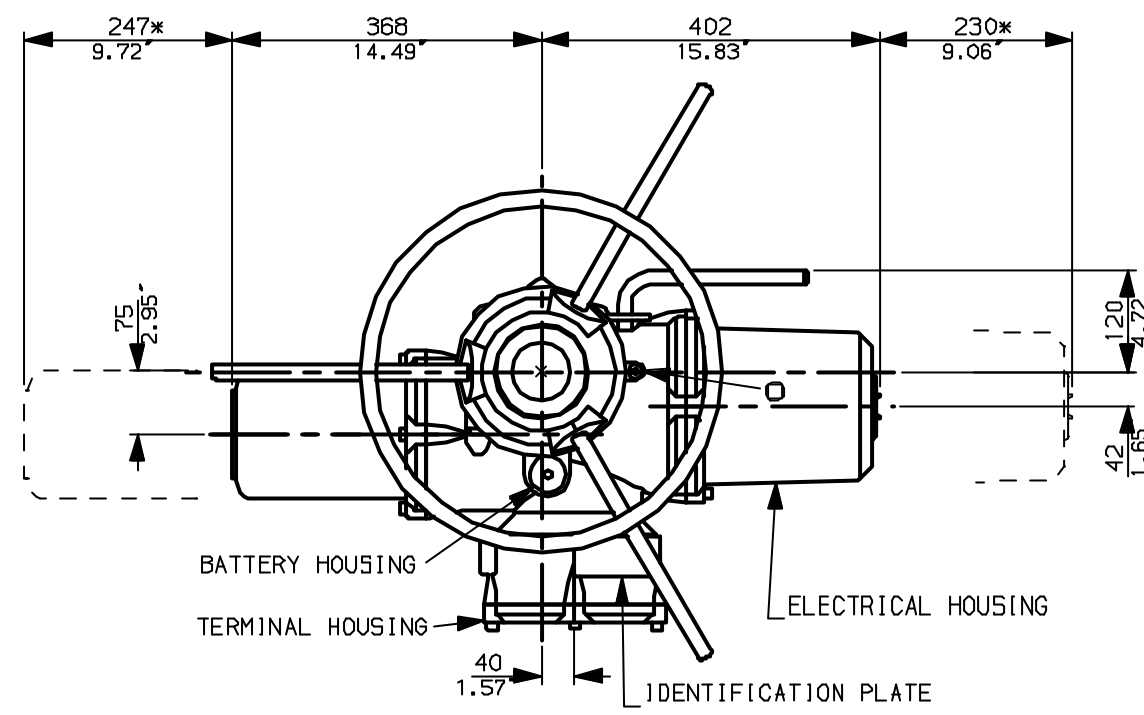
"FA" version  
 8 HOLES TAPPED 3/4"UNCx1.18"dp  
 EQUI-SPACED AS SHOWN ON A  
 11.75" PCD (MS5 SP101-FA30).

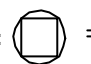
NOTE:  
 Gearbox is shown with LOW Ratio Input Reducer.  
 (ie Ratios 180,240,360,480,540,720)  
 See Data Sheet with IW9Rh for HIGH ratio option.

**rotork**  
 www.rotork.com  
 Rotork Controls Ltd.  
 Bath England, BA1 3JQ.  
 (Phone 01225-733200)  
 Rotork Controls Inc.  
 Rochester, NY 14624  
 (Phone 585-328-1550)

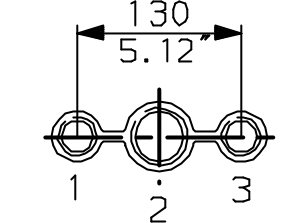
Title IQ35 (+IQS35), THW, IW (MOW) 9RL,		
STANDARD DIMENSIONAL DATA		
Drawn CAD	Checked PRE	Ref Data Sheet
Date April 04	Job No	<b>IQ35THW_IW9R</b>

01	First Issue.
Scale	1:9 THIRD ANGLE PROJECTION
Drawing Number	<b>IQ35THW_IW9RL</b>

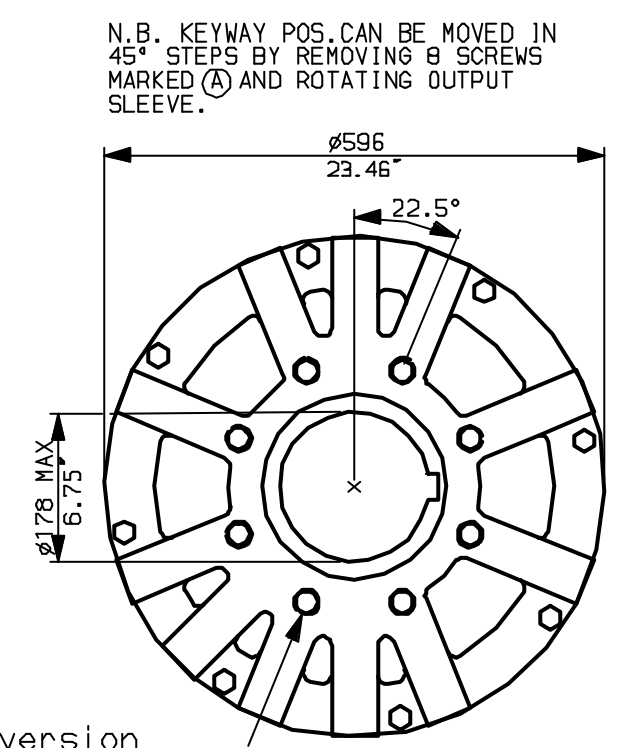
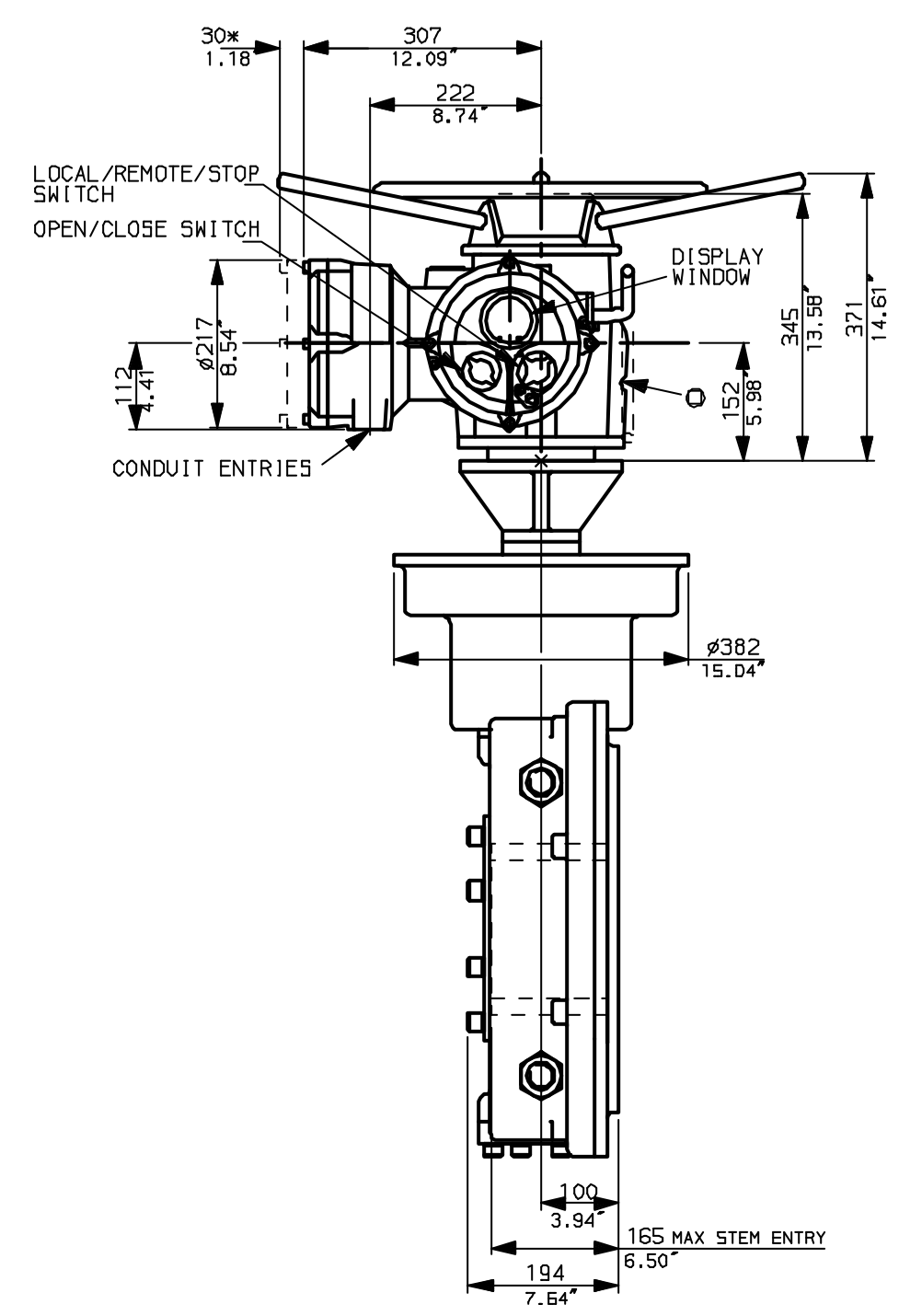
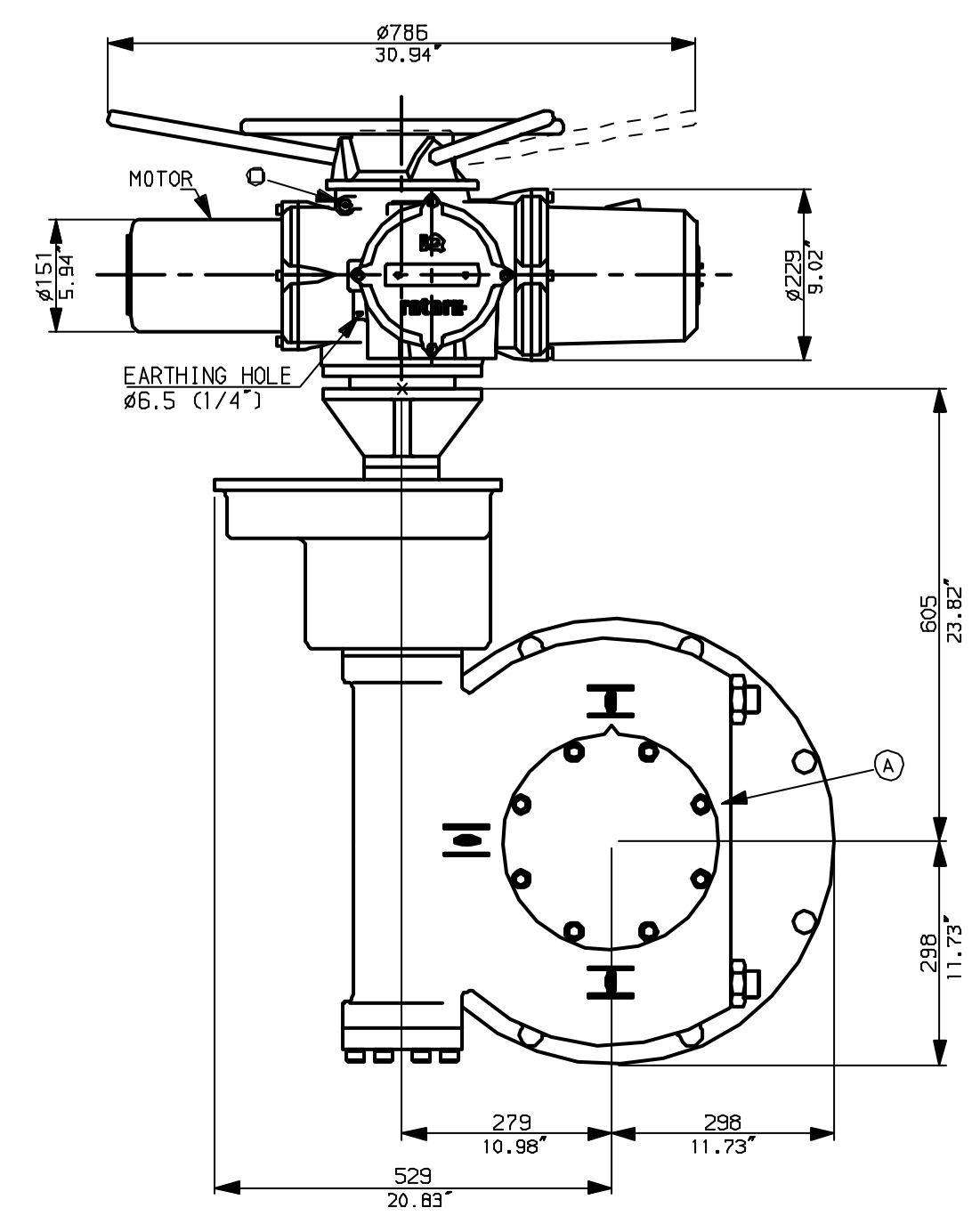


NOTES:  
 \* DIMENSIONS WITH '\*' INDICATE COVER REMOVAL ALLOWANCE  
 : NETT WEIGHT = 365kg (803lbs)  
 :  = OIL FILLER/DRAIN PLUG  
 : THE INTERFACE PROVIDED FOR MOUNTING THE ACTUATOR OR SECOND STAGE GEARBOX ONTO THE VALVE SHOULD CONFORM TO GOOD ENGINEERING PRACTICES, ENSURING ADEQUATELY TOLERANCED LIMITS FOR PARALLELISM, PERPENDICULARITY AND CONCENTRICITY.

**CONDUIT ENTRIES** (N.T.S)



Nos.1 & 3 TAPPED 1" NPT  
 No.2 TAPPED 1 1/2" NPT  
 STD ALTERNATIVES IF SPECIFIED  
 2 X M25, 1 X M40  
 2 X PG16, 1 X PG29



"F" version  
 8 HOLES TAPPED M20 x 30 DP  
 EQUI-SPACED AS SHOWN ON A  
 298 PCD (ISO 5211-F30).

"FA" version  
 8 HOLES TAPPED 3/4" UNC x 1.18" dp  
 EQUI-SPACED AS SHOWN ON A  
 11.75" PCD (MS5 5P101-FA30).

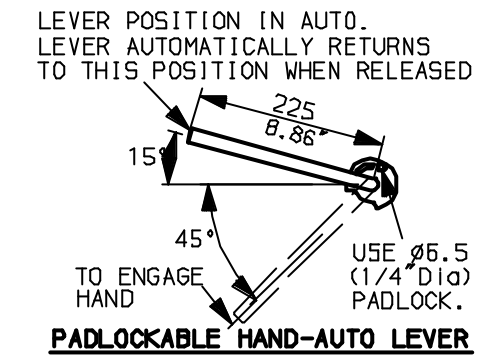
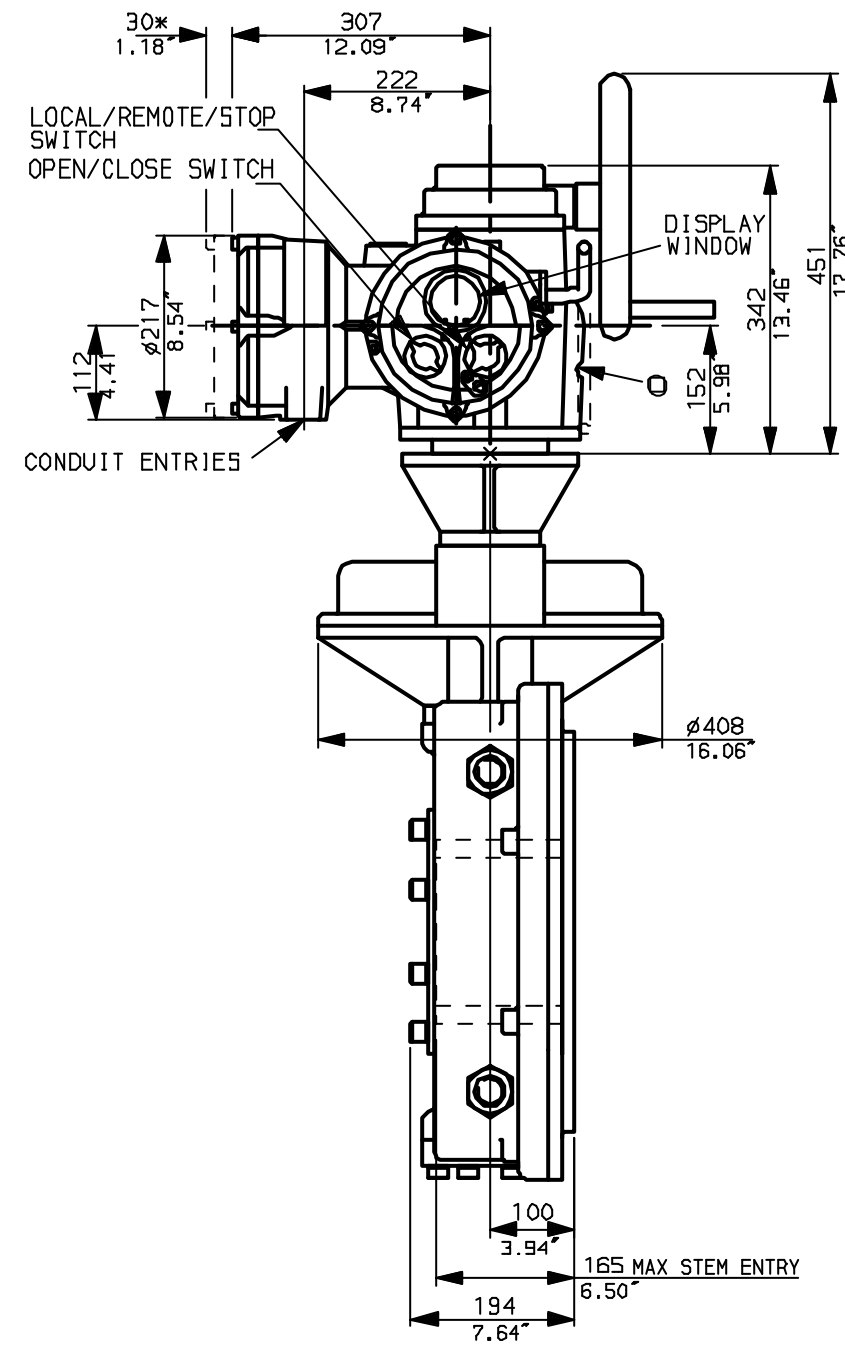
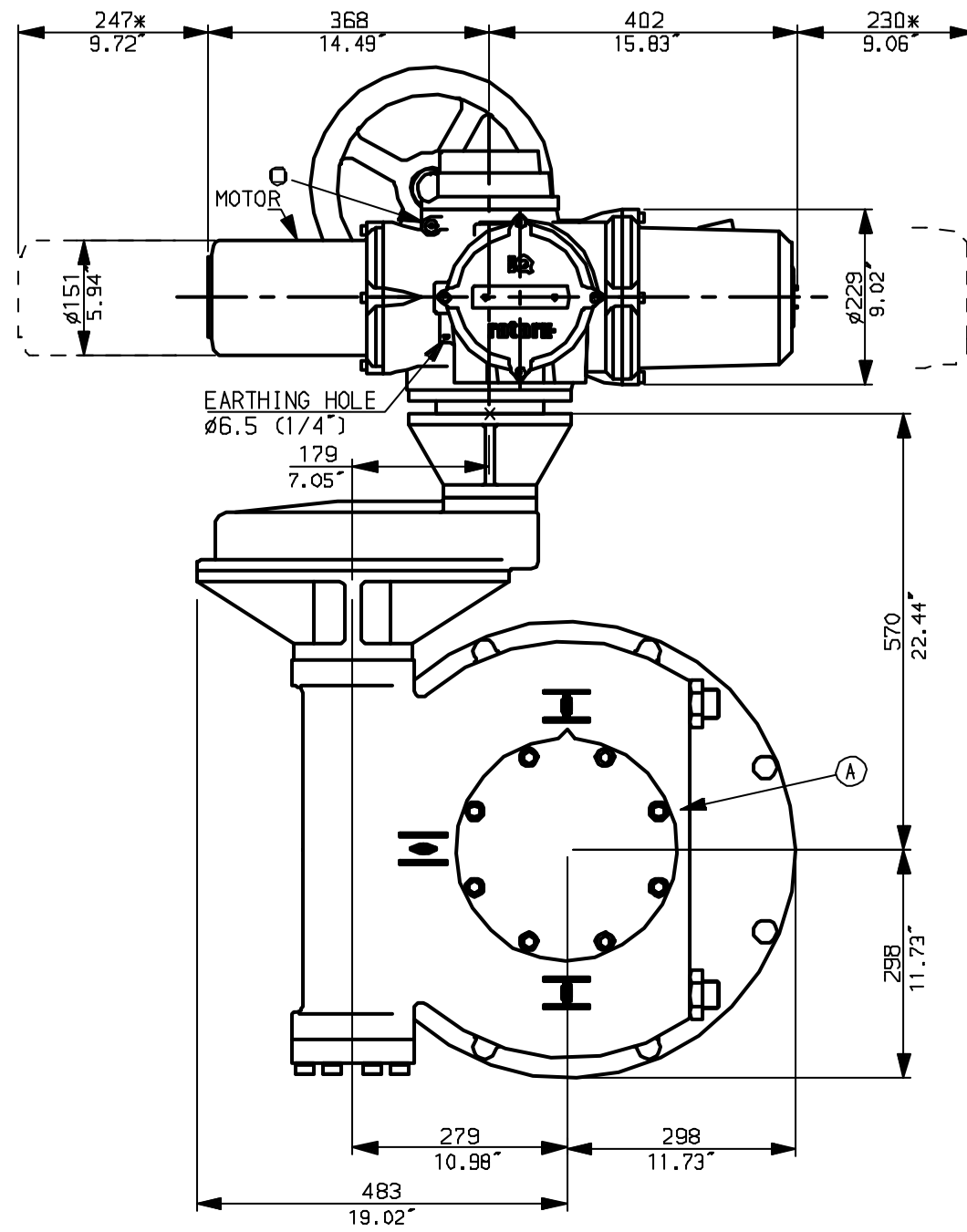
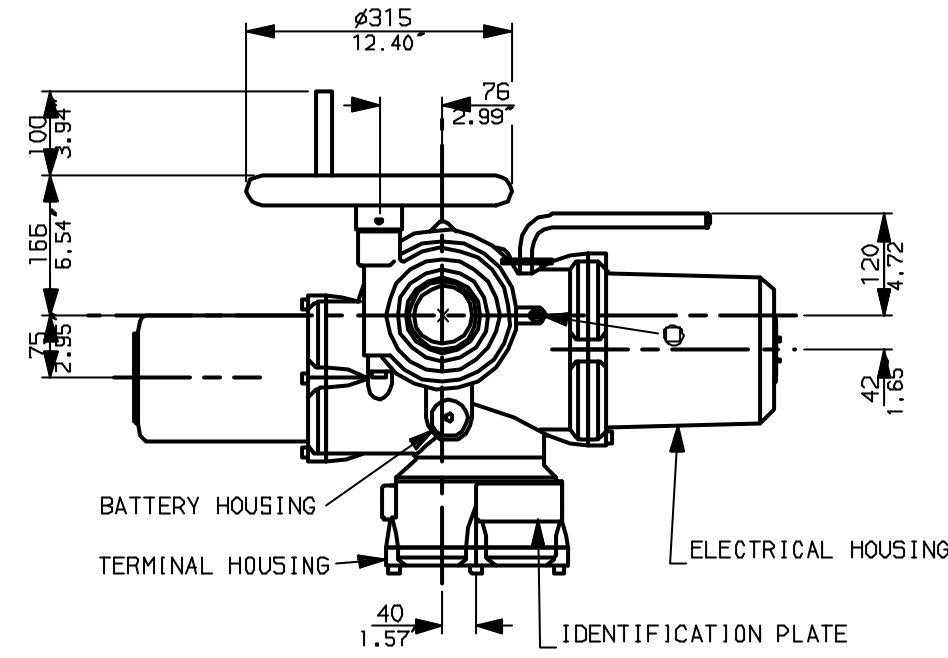
NOTE:  
 Gearbox is shown with HIGH Ratio Input Reducer.  
 (ie Ratios 960, 1080, 1440, 2160, 2520, 3000)  
 See Data Sheet with IW9RL for LOW ratio option.

**rotork**  
 www.rotork.com  
 Rotork Controls Ltd.  
 Bath England, BA1 3JQ.  
 (Phone 01225-733200)  
 Rotork Controls Inc.  
 Rochester, NY 14624  
 (Phone 585-328-1550)

Title IQ35 (+IQS35), THW, IW (MOW) 9Rh,		
STANDARD DIMENSIONAL DATA		
Drawn CAD	Checked PRE	Ref Data Sheet
Date April 04	Job No	<b>IQ35THW_IW9Rh</b>

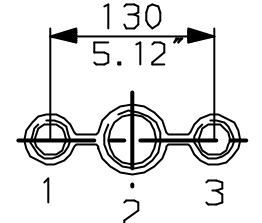
01	First Issue.
Scale	1:9 THIRD ANGLE PROJECTION
Drawing Number	<b>IQ35THW_IW9Rh</b>

G  
F  
E  
D  
C  
B  
A

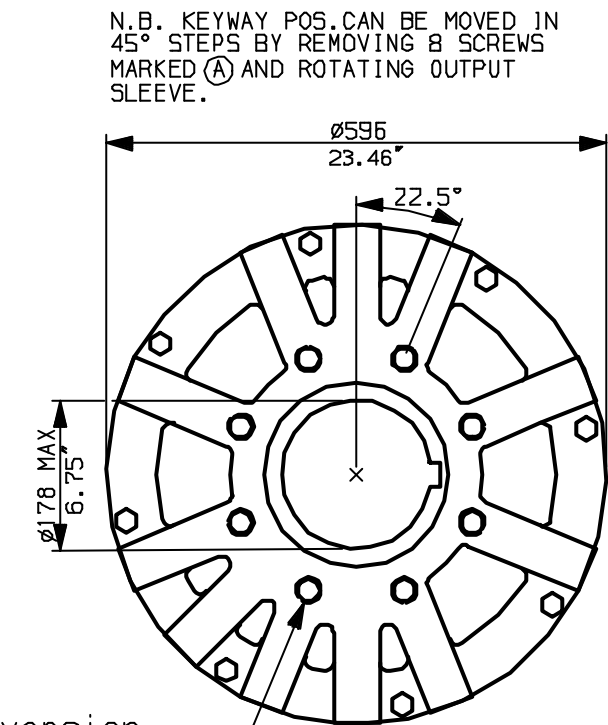


NOTES:  
 \* DIMENSIONS WITH '\*' INDICATE COVER REMOVAL ALLOWANCE  
 : NETT WEIGHT = 337kg (741 lbs)  
 :  $\phi$  = OIL FILLER/DRAIN PLUG  
 : THE INTERFACE PROVIDED FOR MOUNTING THE ACTUATOR OR SECOND STAGE GEARBOX ONTO THE VALVE SHOULD CONFORM TO GOOD ENGINEERING PRACTICES, ENSURING ADEQUATELY TOLERANCED LIMITS FOR PARALLELISM, PERPENDICULARITY AND CONCENTRICITY.

CONDUIT ENTRIES (N.T.S)



Nos.1 & 3 TAPPED 1" NPT  
 No.2 TAPPED 1 1/2" NPT  
 STD ALTERNATIVES IF SPECIFIED  
 2 X M25, 1 X M40  
 2 X PG16, 1 X PG29



"F" version  
 8 HOLES TAPPED M20 x 30 DP  
 EQUI-SPACED AS SHOWN ON A  
 298 PCD (ISO 5211-F30).

"FA" version  
 8 HOLES TAPPED 3/4" UNC x 1.18" dp  
 EQUI-SPACED AS SHOWN ON A  
 11.75" PCD (MS5 SP101-FA30).

NOTE:  
 Gearbox is shown with LOW Ratio Input Reducer.  
 (ie Ratios 180, 240, 360, 480, 540, 720)  
 See Data Sheet with IW9R for HIGH ratio option.

**rotork**  
 www.rotork.com

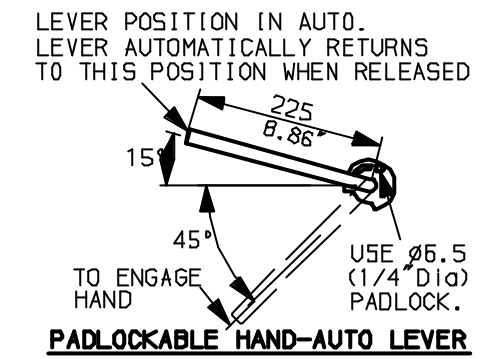
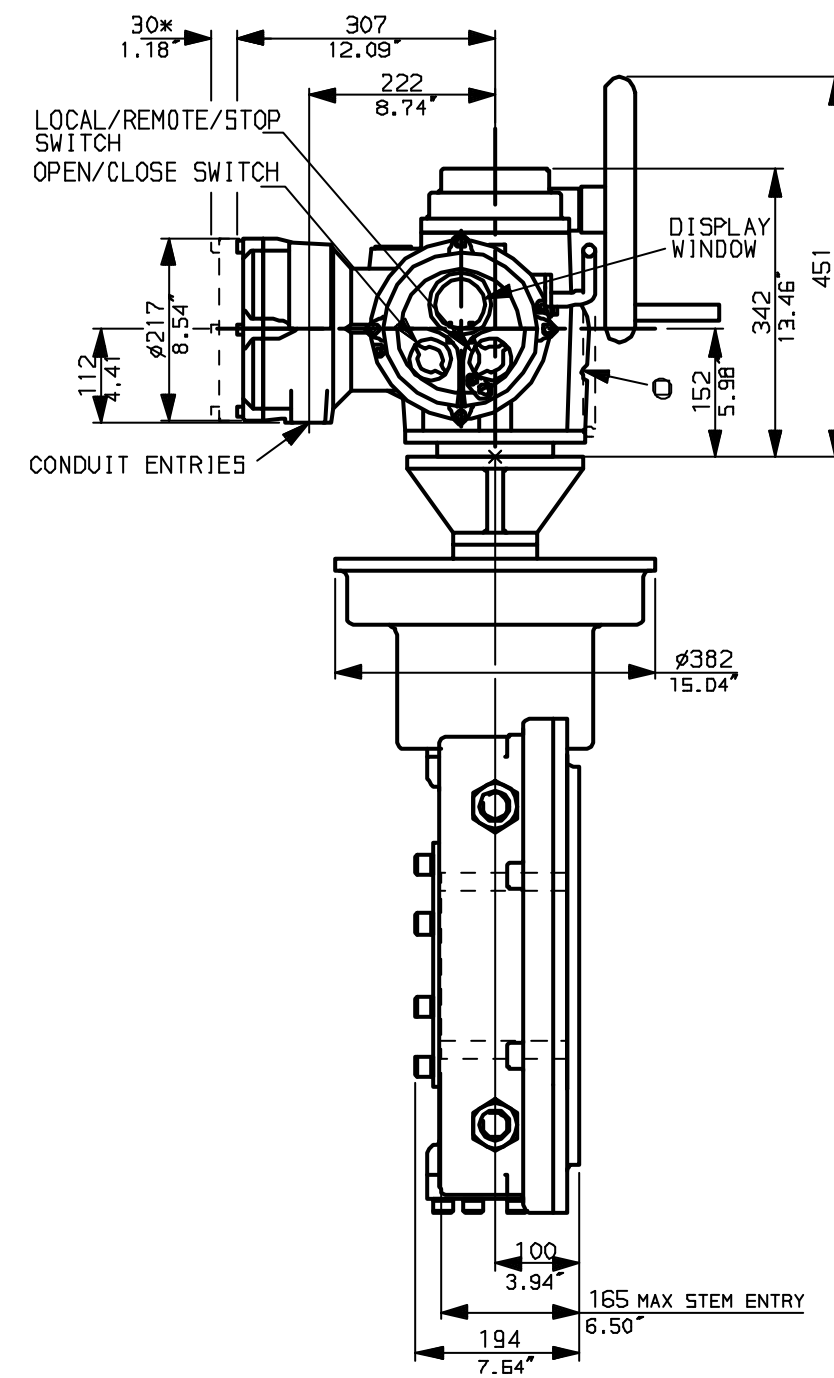
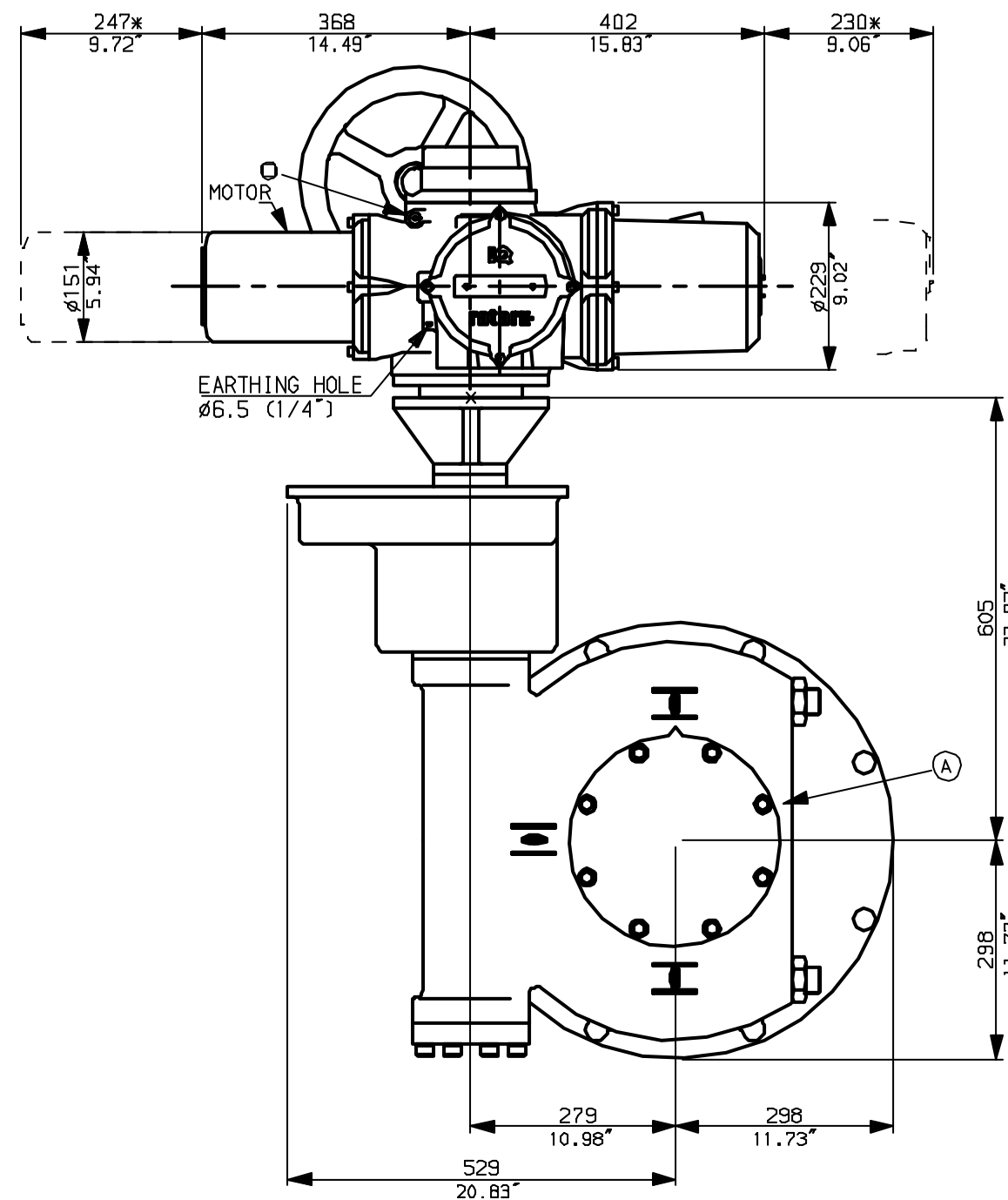
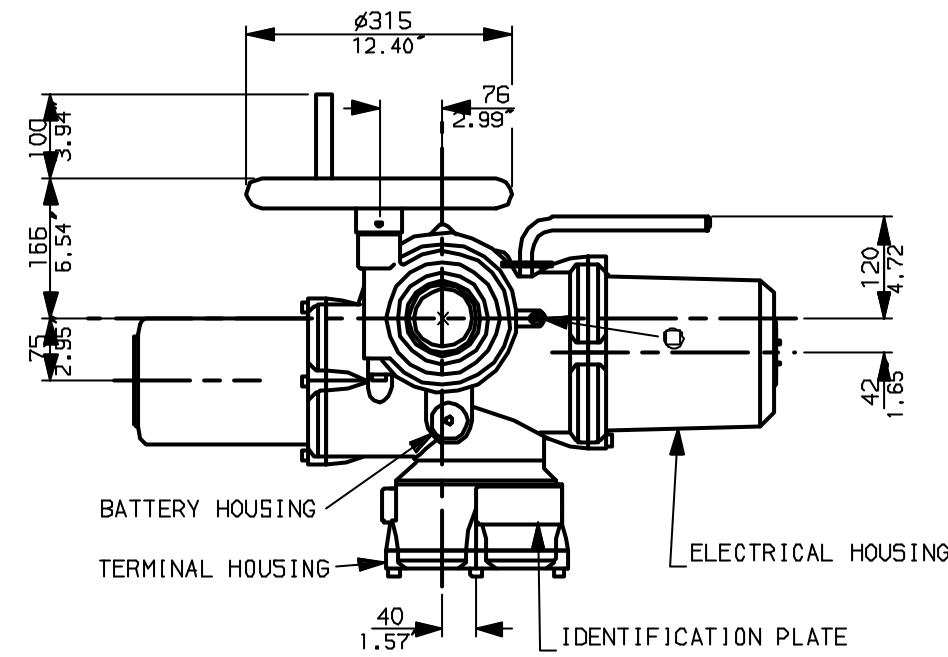
Rotork Controls Ltd.  
 Bath England, BA1 3JQ.  
 (Phone 01225-733200)  
 Rotork Controls Inc.  
 Rochester, NY 14624  
 (Phone 585-328-1550)

Title IQ35 (+IQS35), SHW, IW (MOW) 9RL,		
STANDARD DIMENSIONAL DATA		
Drawn CAD	Checked PRE	Ref Data Sheet
Date April 04	Job No	<b>IQ35SHW_IW9R</b>

01	First Issue.
Scale	1:9 THIRD ANGLE PROJECTION
Drawing Number	<b>IQ35SHW_IW9RL</b>

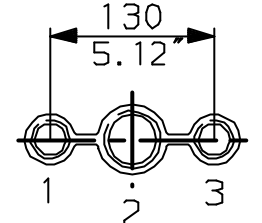
1 | 2 | 3 | 4 | 5 | 6 | 7 | 8 | 9 | 10

G  
F  
E  
D  
C  
B  
A



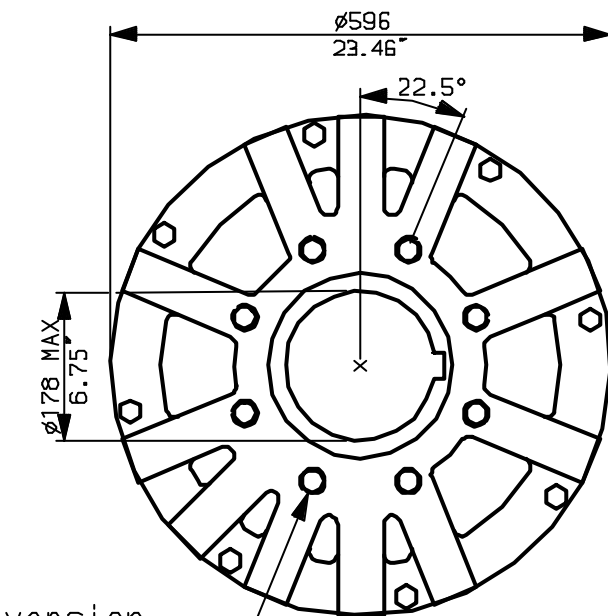
**NOTES:**  
 \* DIMENSIONS WITH '\*' INDICATE COVER REMOVAL ALLOWANCE  
 : NETT WEIGHT = 365kg (803lbs)  
 :  $\phi$  = OIL FILLER/DRAIN PLUG  
 : THE INTERFACE PROVIDED FOR MOUNTING THE ACTUATOR OR SECOND STAGE GEARBOX ONTO THE VALVE SHOULD CONFORM TO GOOD ENGINEERING PRACTICES, ENSURING ADEQUATELY TOLERANCED LIMITS FOR PARALLELISM, PERPENDICULARITY AND CONCENTRICITY.

**CONDUIT ENTRIES (N.T.S)**



Nos.1 & 3 TAPPED 1" NPT  
 No.2 TAPPED 1 1/2" NPT  
 STD ALTERNATIVES IF SPECIFIED  
 2 X M25, 1 X M40  
 2 X PG16, 1 X PG29

N.B. KEYWAY POS. CAN BE MOVED IN 45° STEPS BY REMOVING 8 SCREWS MARKED (A) AND ROTATING OUTPUT SLEEVE.



**"F" version**

8 HOLES TAPPED M20 x 30 DP  
 EQUI-SPACED AS SHOWN ON A  
 298 PCD (ISO 5211-F30).

**"FA" version**

8 HOLES TAPPED 3/4" UNC x 1.18" dp  
 EQUI-SPACED AS SHOWN ON A  
 11.75" PCD (M55 SP101-FA30).

**rotork**  
 www.rotork.com

Rotork Controls Ltd.  
 Bath England, BA1 3JQ.  
 (Phone 01225-733200)  
 Rotork Controls Inc.  
 Rochester, NY 14624  
 (Phone 585-328-1550)

Title IQ35 (+IQS35), SHW, IW (MOW) 9Rh,		
STANDARD DIMENSIONAL DATA		
Drawn CAD	Checked PRE	Ref Data Sheet
Date April 04	Job No	<b>IQ35SHW_IW9Rh</b>

**NOTE:**  
 Gearbox is shown with HIGH Ratio Input Reducer.  
 (ie Ratios 960, 1080, 1440, 2160, 2520, 3000)  
 See Data Sheet with IW9RL for LOW ratio option.

01	First Issue.
Scale	1:9 THIRD ANGLE PROJECTION
Drawing Number	<b>IQ35SHW_IW9Rh</b>

1 | 2 | 3 | 4 | 5 | 6 | 7 | 8 | 9 | 10