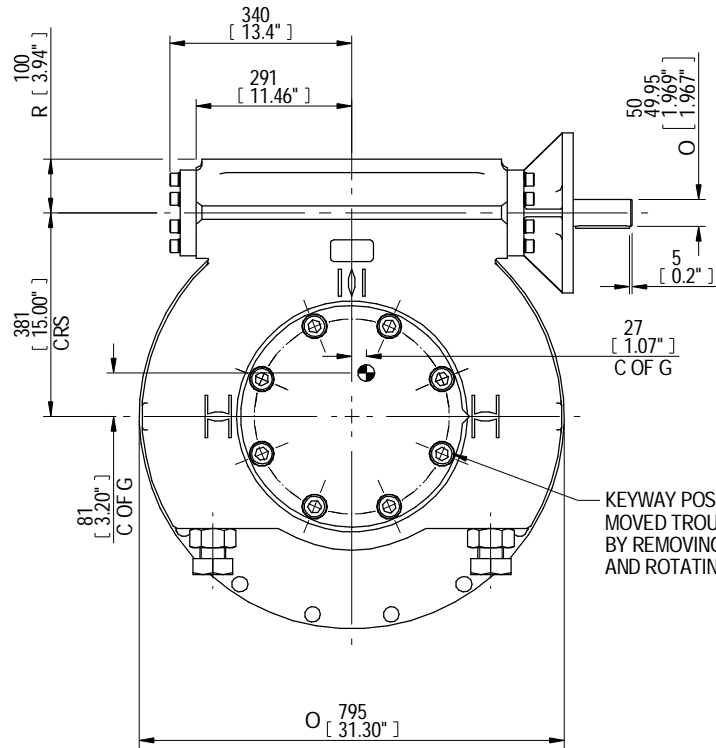
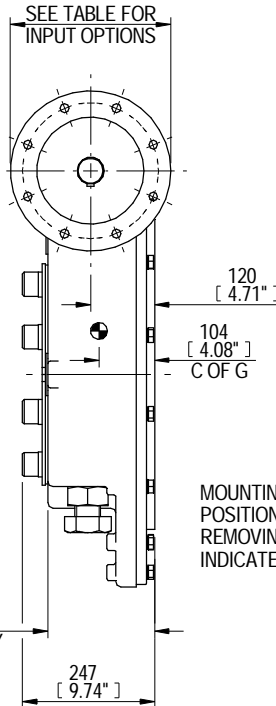


Drawing Number
PUB-IW115BB

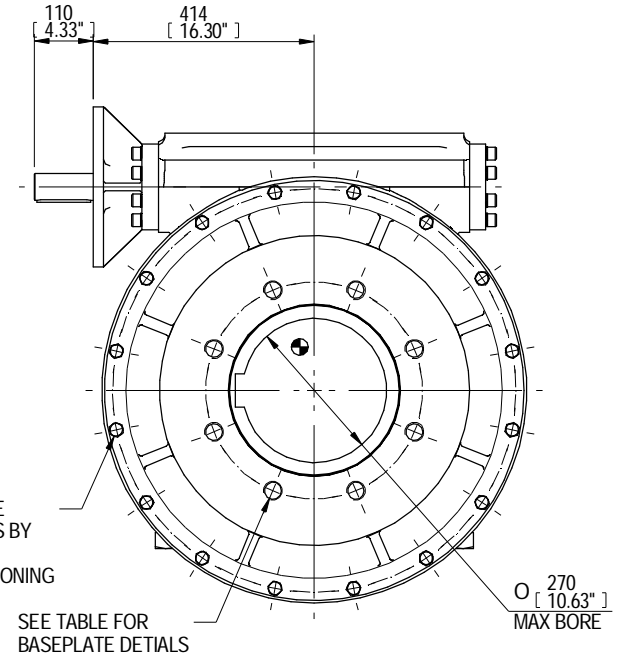


KEYWAY POSITION CAN BE MOVED THROUGH 45° STEPS BY REMOVING 8 SCREWS INDICATED AND ROTATING OUTPUT SLEEVE



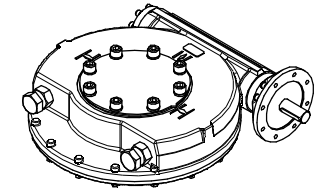
SEE TABLE FOR INPUT OPTIONS

MOUNTING BOLTS CAN BE POSITIONED ON CENTERS BY REMOVING 16 BOLTS INDICATED AND REPOSITIONING



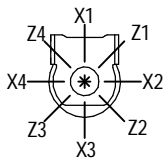
SEE TABLE FOR BASEPLATE DETAILS

VIEWS SHOWING MOTORISED OPERATED UNIT RATIO 60 ONLY



MOTORISED UNIT

PLAN VIEW OF GEARBOX IN CLOSED POSITION SHOWING STANDARD KEYWAY POSITIONS. ALTERNATIVES AVAILABLE ON REQUEST



INPUT FLANGE DETAILS						
	FLANGE O/DIA.	SHAFT DIA.	RECESS DIA.	RECESS DEPTH	HOLE DETAILS (OFF CENTRES)	KEY DETAILS
ISO F25	Ø300	Ø50.00-0.05	Ø200.10+0.1	5	8 HOLES Ø16.5 (Ø0.65")	14x9x100
	(Ø11.81")	(Ø1.969"-0.002")	(Ø7.878"+0.004")	(0.20")	ON Ø254.0 (Ø10.00") P.C.	(0.55"x0.35"x3.94")
FA25	Ø300	Ø50.00-0.05	Ø152.30+0.17	5	8 HOLES Ø16.5 (Ø0.65")	14x9x100
	(Ø11.81")	(Ø1.969"-0.002")	(Ø5.996"+0.007")	(0.20")	ON Ø254.0 (Ø10.00") P.C.	(0.55"x0.35"x3.94")
ISO F30	Ø350	Ø50.00-0.05	Ø230.10+0.10	6	8 HOLES Ø20.5 (Ø0.81")	14x9x100
	(Ø13.78")	(Ø1.969"-0.002")	(Ø9.059"+0.004")	(0.24")	ON Ø298.0 (Ø11.73") P.C.	(0.55"x0.35"x3.94")
ROTORK G30	Ø418	Ø50.00-0.05	Ø216.10+0.10	6	8 HOLES Ø23.0 (Ø0.91")	14x9x100
	(Ø16.46")	(Ø1.969"-0.002")	(Ø8.508"+0.004")	(0.24")	ON Ø356.0 (Ø14.02") P.C.	(0.55"x0.35"x3.94")

BASEPLATE DETAILS	
ISO 5211	HOLE DETAILS (22.5° OFF CENTRES)
ISO F40	8 HOLES M36x36 (1.42") DEEP
	ON Ø406.0 (Ø15.98") P.C.
FA40	8 HOLES 1.25" UNCx36 (1.42") DEEP
	ON Ø406.4 (Ø16.00") P.C.

MAX BORE SQ KEY		MAX BORE RECTANGULAR KEY	
STD	BORE	BORE	KEY
BS4235	-	270.0	63x32
BS46	-	10"	2.1/2"x1.7/8"
ANSI B17.1	9.4"	2.1/2" SQ	10.125"

AS PART OF CONTINUOUS PRODUCT DEVELOPMENT, ALL DETAILS SUBJECT TO CHANGE WITHOUT PRIOR NOTICE. FOR UP TO DATE DETAILS PLEASE VISIT www.rotork.com



This drawing is confidential and is the property of Rotork Gears and must not be reproduced either wholly or partly. All rights in respect of patents, designs and copyrights are reserved. © 2013

Document type	PUBLICITY	Mass	431.61 kg	Title	W/MOW115 BIG BORE QUARTER TURN GEARBOX, 60:1 RATIO
		Dimensions in mm			
		Scale		1:10	
Created	M JONES	10/09/2013	Drawing Number		
Checked	J DODD	12/09/2013	PUB-IW115BB		
Approved			Sheet	1 of 1	Size A3

Rev	EC	Revised	Approved	Date	Change Description
A	-	-	-	12/09/13	FIRST ISSUE