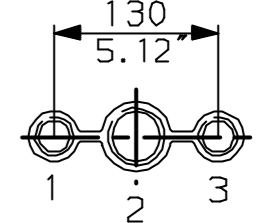


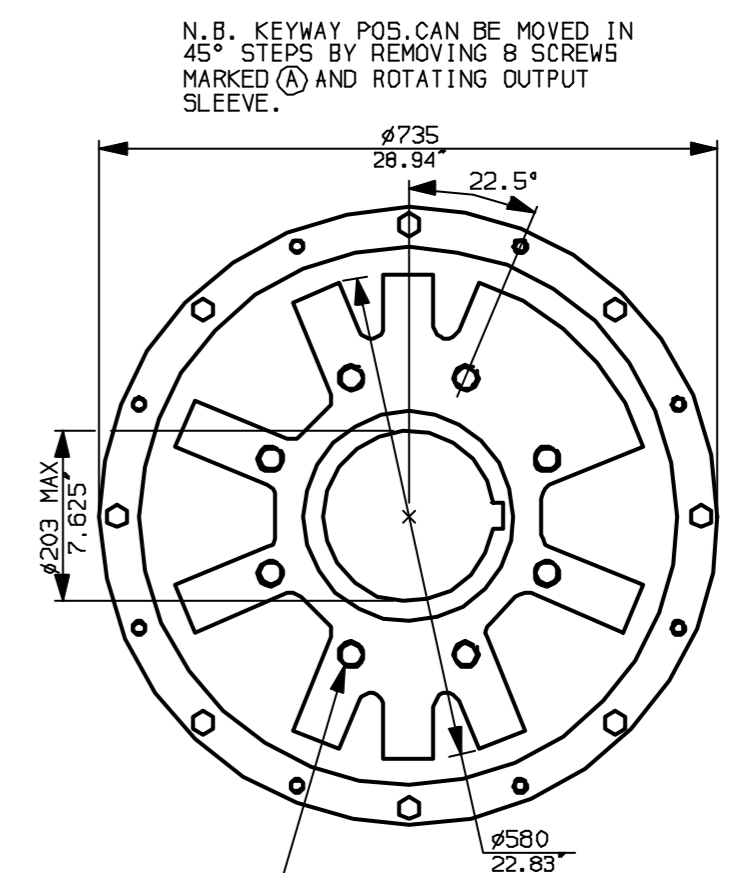
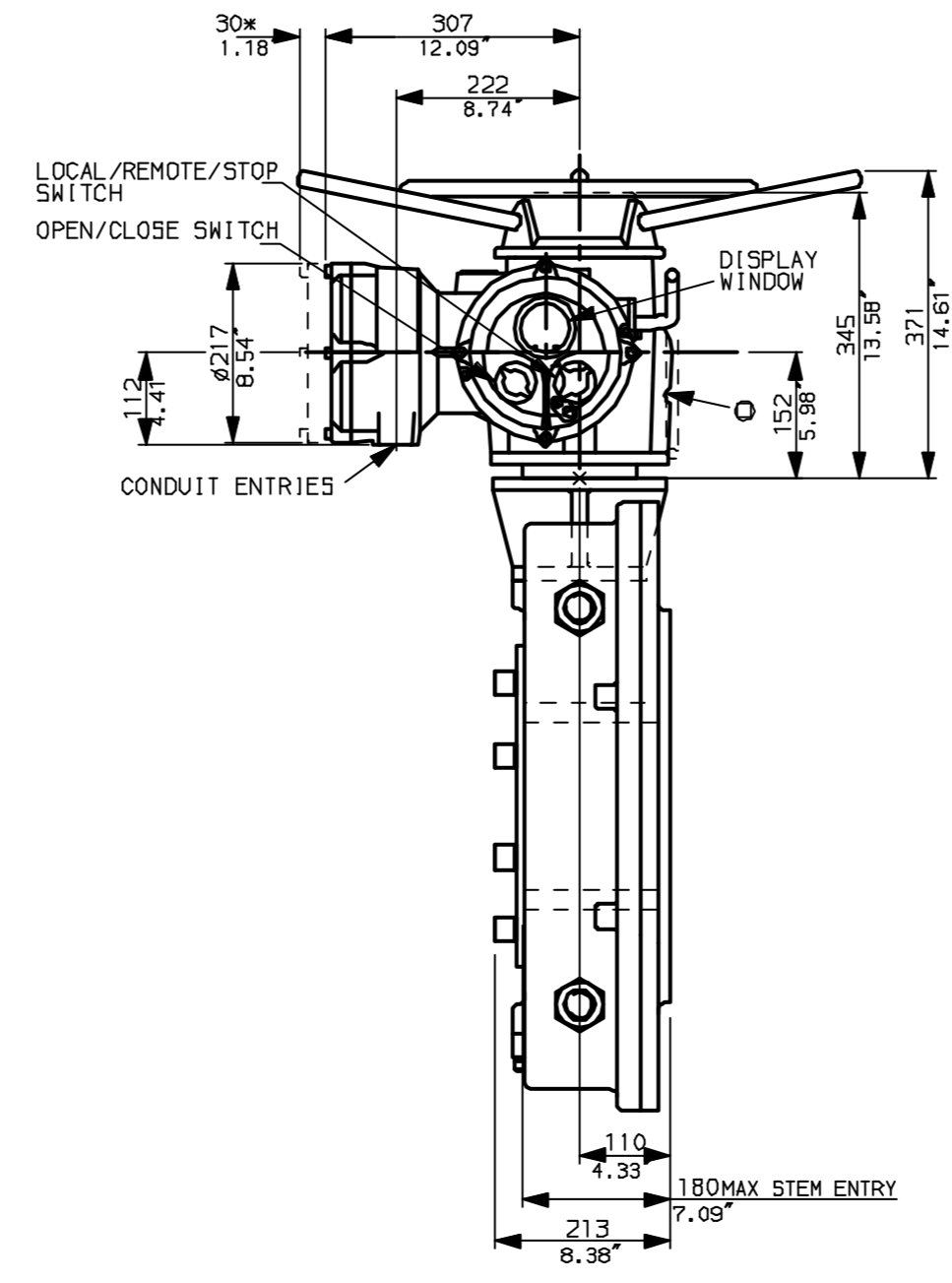
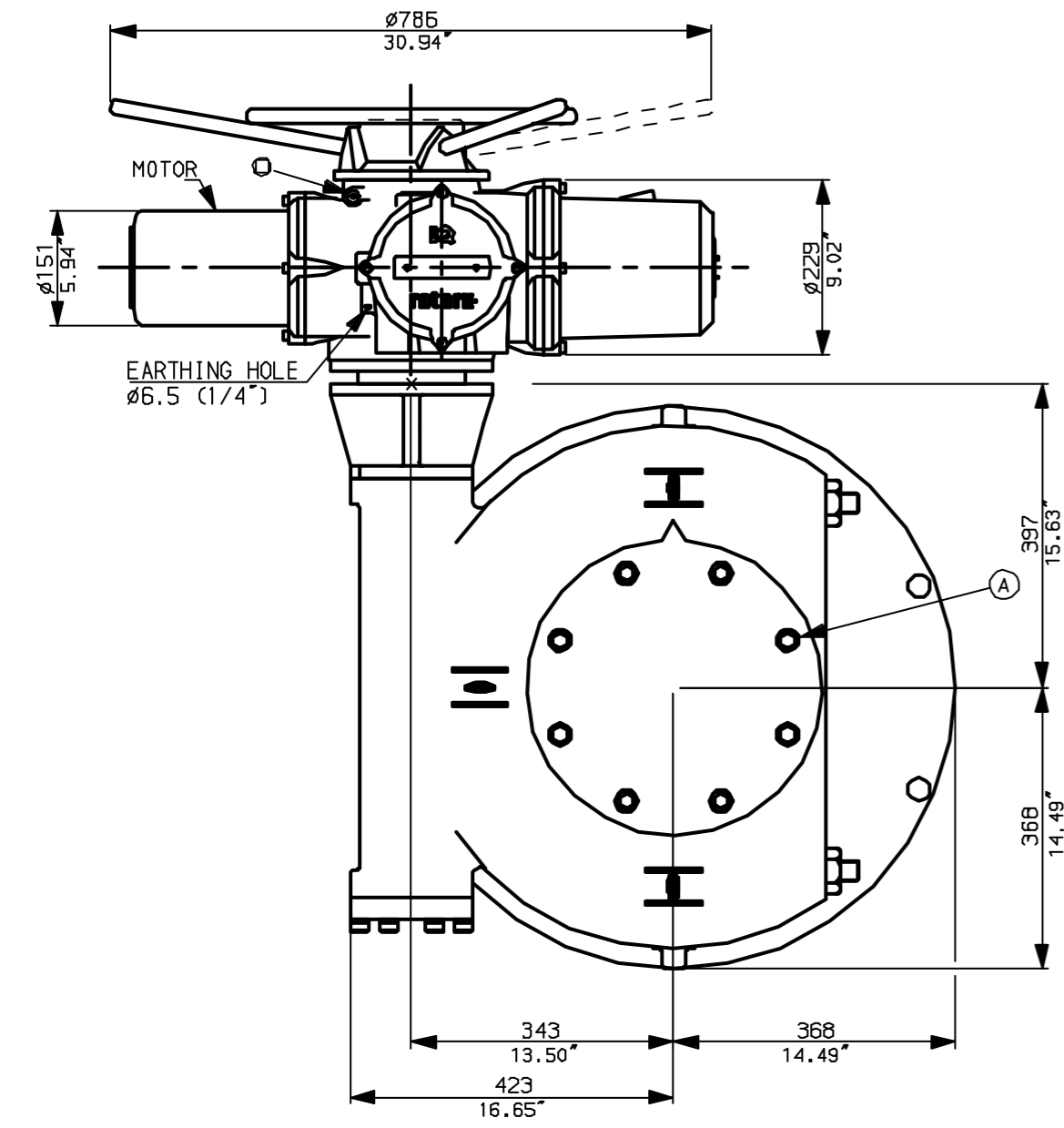
**NOTES:**

- DIMENSIONS WITH '\*' INDICATE COVER REMOVAL ALLOWANCE
- NETT WEIGHT = 405kg (891 lbs)
- $\odot$  = OIL FILLER/DRAIN PLUG
- THE INTERFACE PROVIDED FOR MOUNTING THE ACTUATOR OR SECOND STAGE GEARBOX ONTO THE VALVE SHOULD CONFORM TO GOOD ENGINEERING PRACTICES, ENSURING ADEQUATELY TOLERANCED LIMITS FOR PARALLELISM, PERPENDICULARITY AND CONCENTRICITY.

**CONDUIT ENTRIES (N.T.S)**



Nos.1 & 3 TAPPED 1" NPT  
 No.2 TAPPED 1 1/2" NPT  
 STD ALTERNATIVES IF SPECIFIED  
 2 X M25, 1 X M40  
 2 X PG16, 1 X PG29



"F" version  
 8 HOLES TAPPED M30 x 36 DEEP, EQUI-SPACED OFF CENTRES ON A 356 P.C.D. (ISO 5211-F35).

"FA" version  
 8 HOLES TAPPED 1" UNC x 1.42" dp EQUI-SPACED OFF CENTRES ON A 14" PCD (MSS 5P101-FA35).



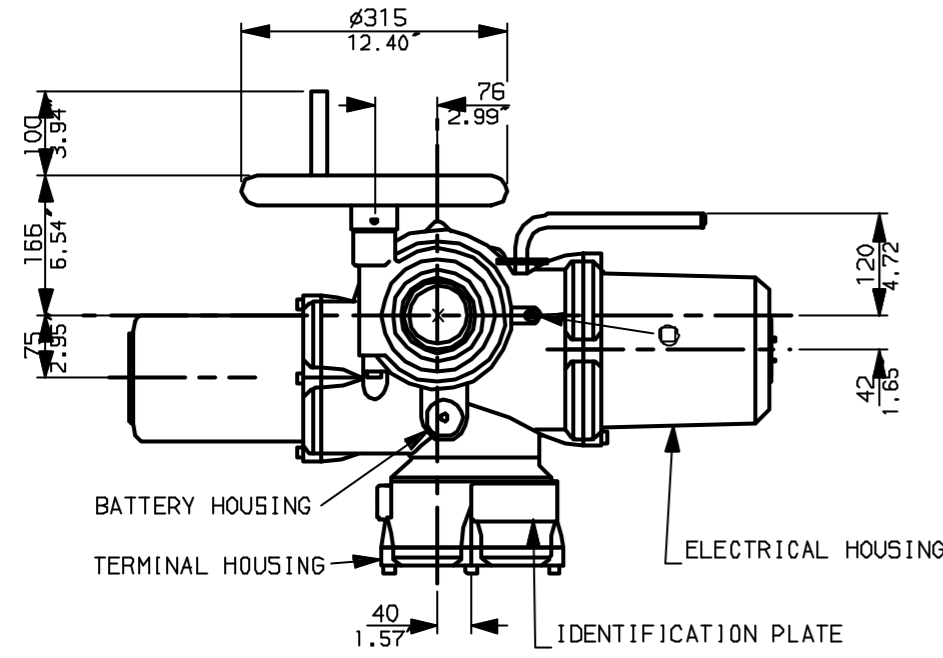
Rotork Controls Ltd.  
 Bath England, BA1 3JQ.  
 (Phone 01225-733200)

Rotork Controls Inc.  
 Rochester, NY 14624  
 (Phone 585-328-1550)

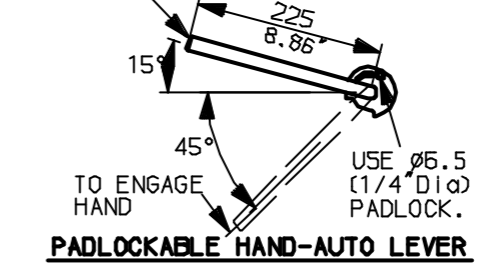
Title IQM35, THW, MOW10,		
STANDARD DIMENSIONAL DATA		
Drawn CAD	Checked PRE	Ref Data Sheet
Date April 04	Job No	IQ35THW_MOW10

01	First Issue.
Scale	1:9 THIRD ANGLE PROJECTION
Drawing Number	IQ35THW_MOW10

G  
F  
E  
D  
C  
B  
A

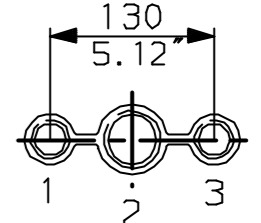


LEVER POSITION IN AUTO.  
LEVER AUTOMATICALLY RETURNS  
TO THIS POSITION WHEN RELEASED

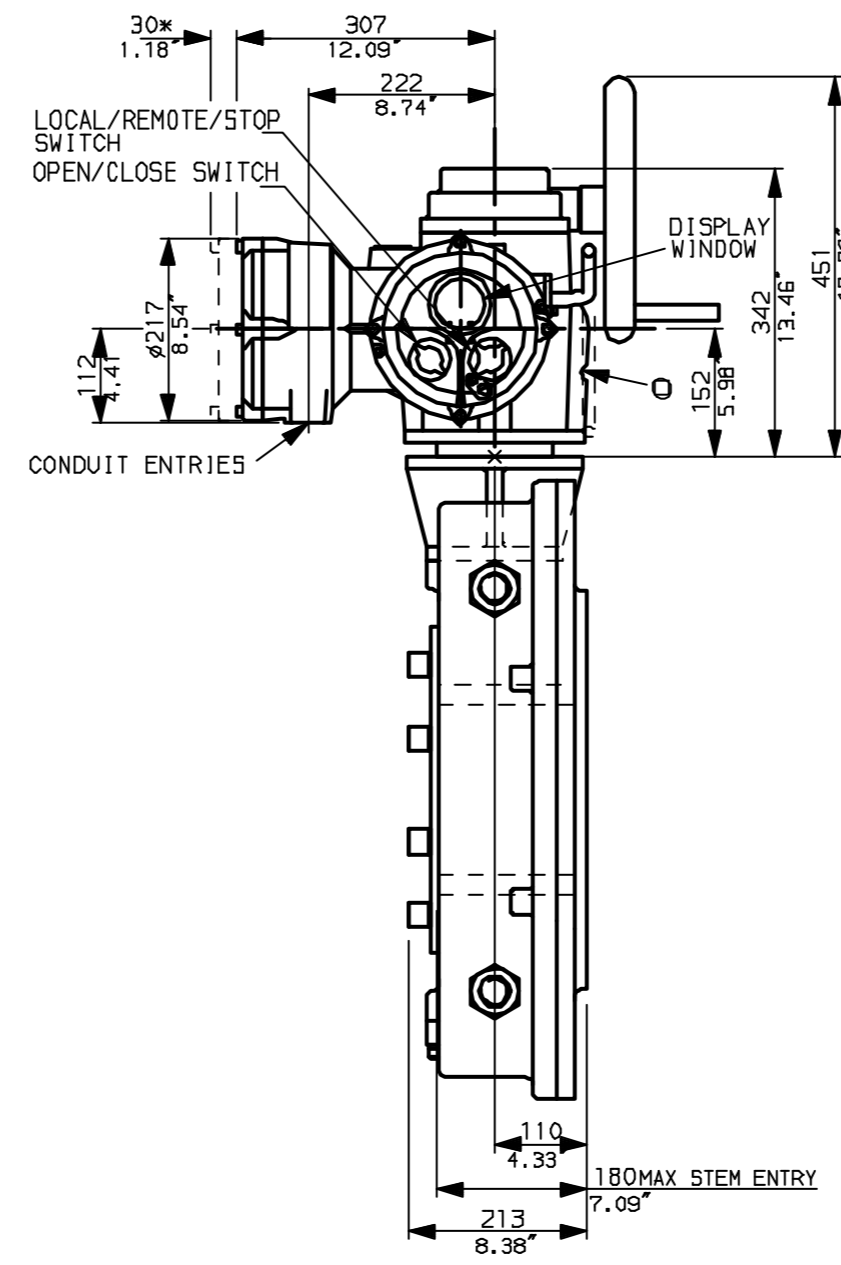
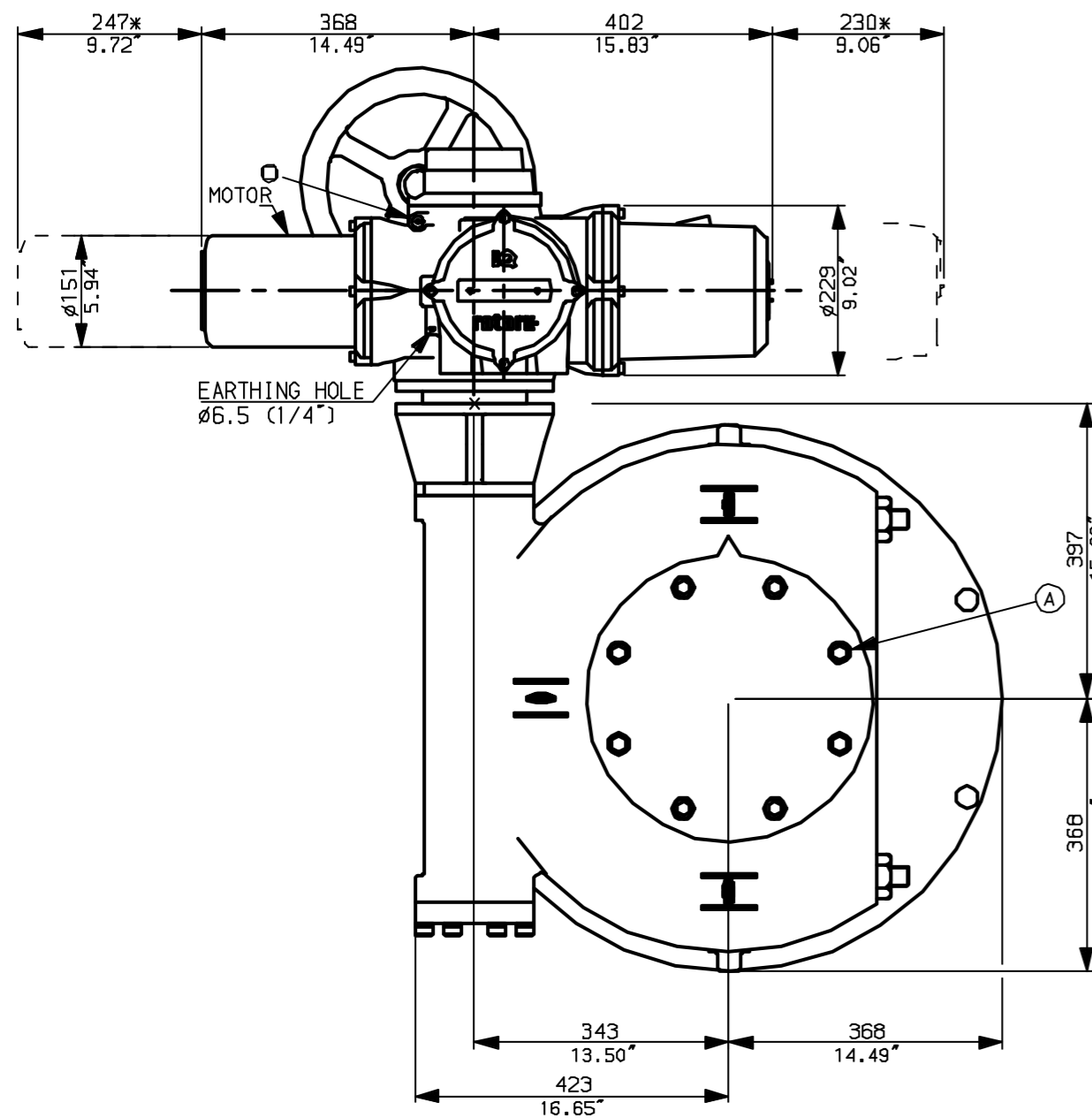


NOTES:  
DIMENSIONS WITH '\*' INDICATE  
COVER REMOVAL ALLOWANCE  
NETT WEIGHT = 405kg (891 lbs)  
OIL FILLER/DRAIN PLUG  
THE INTERFACE PROVIDED FOR MOUNTING THE  
ACTUATOR OR SECOND STAGE GEARBOX ONTO THE  
VALVE SHOULD CONFORM TO GOOD ENGINEERING  
PRACTICES, ENSURING ADEQUATELY TOLERANCED  
LIMITS FOR PARALLELISM, PERPENDICULARITY  
AND CONCENTRICITY.

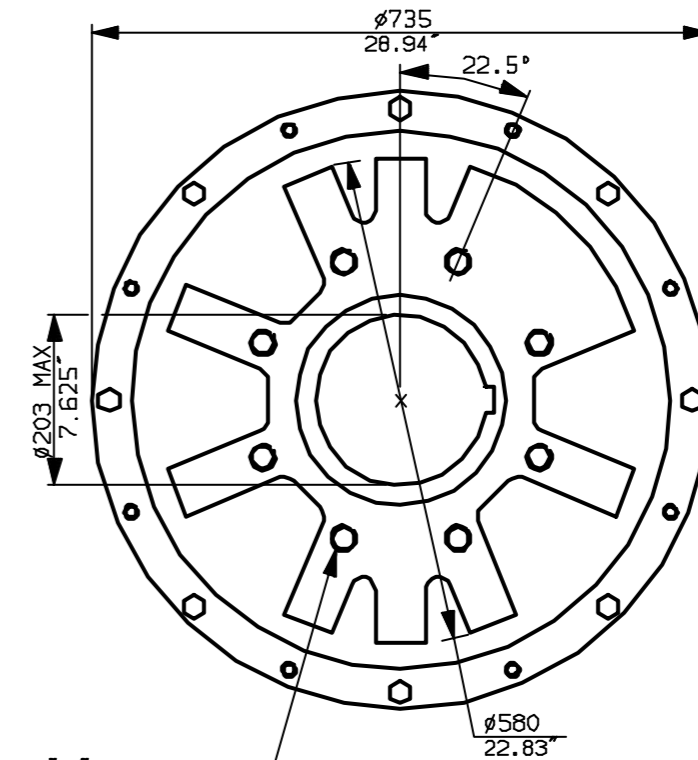
CONDUIT ENTRIES (N.T.S)



Nos.1 & 3 TAPPED 1" NPT  
No.2 TAPPED 1 1/2" NPT  
STD ALTERNATIVES IF SPECIFIED  
2 X M25, 1 X M40  
2 X PG16, 1 X PG29



N.B. KEYWAY POS. CAN BE MOVED IN  
45° STEPS BY REMOVING 8 SCREWS  
MARKED (A) AND ROTATING OUTPUT  
SLEEVE.



"F" version  
8 HOLES TAPPED M30 x 36 DEEP,  
EQUI-SPACED OFF CENTRES ON A  
356 P.C.D. (150 5211-F35).

"FA" version  
8 HOLES TAPPED 1"UNCx1.42"dp  
EQUI-SPACED OFF CENTRES ON A  
14" PCD (MSS 5P101-FA35).

**rotork**  
www.rotork.com

Rotork Controls Ltd.  
Bath England, BA1 3JQ.  
(Phone 01225-733200)  
Rotork Controls Inc.  
Rochester, NY 14624  
(Phone 585-328-1550)

Title IQM35, SHW, MOW10,		
STANDARD DIMENSIONAL DATA		
Drawn CAD	Checked PRE	Ref Data Sheet
Date April 04	Job No	IQ35SHW_MOW10

01	First Issue.
Scale	1:9 THIRD ANGLE PROJECTION
Drawing Number	IQ35SHW_MOW10

1 | 2 | 3 | 4 | 5 | 6 | 7 | 8 | 9 | 10