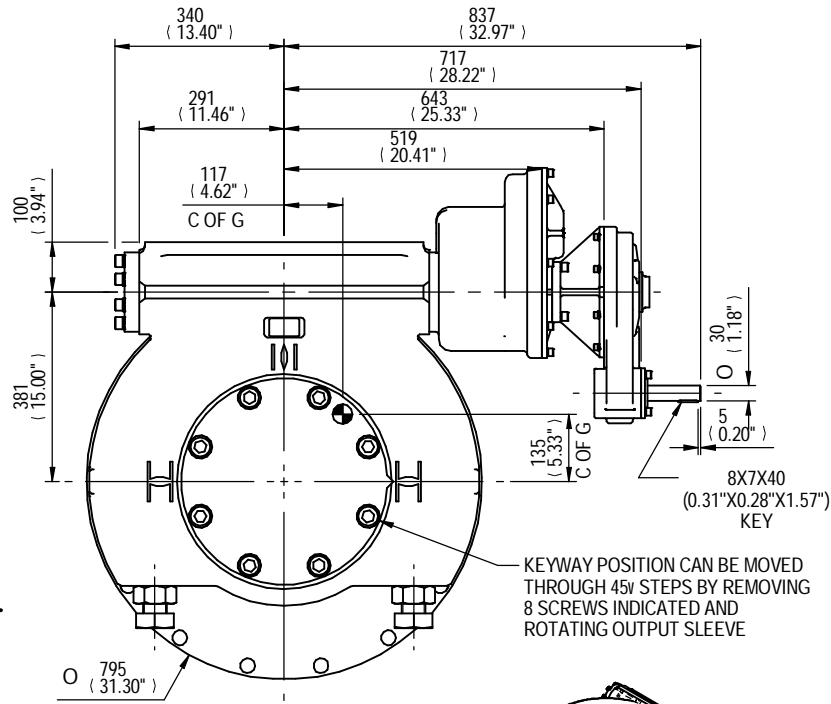
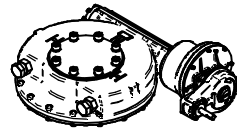


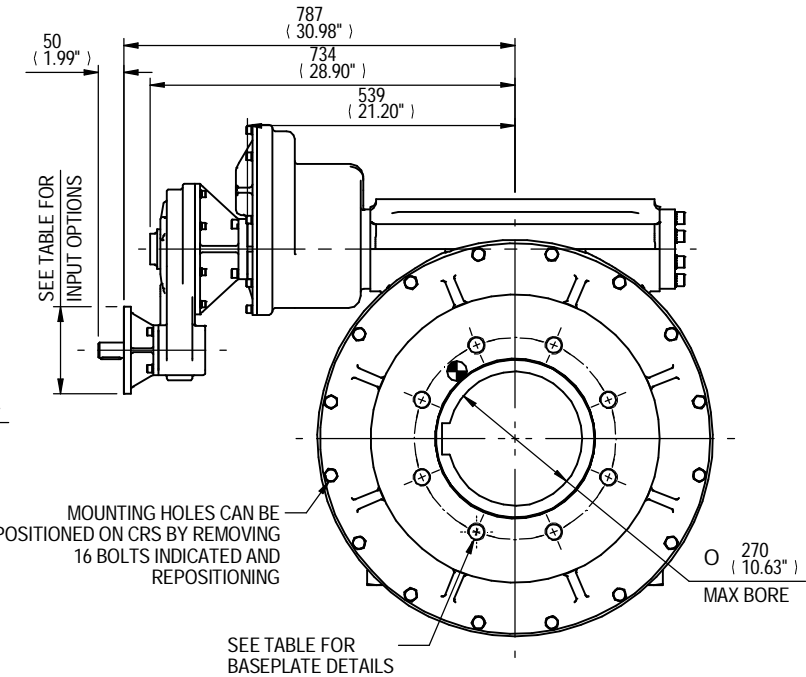
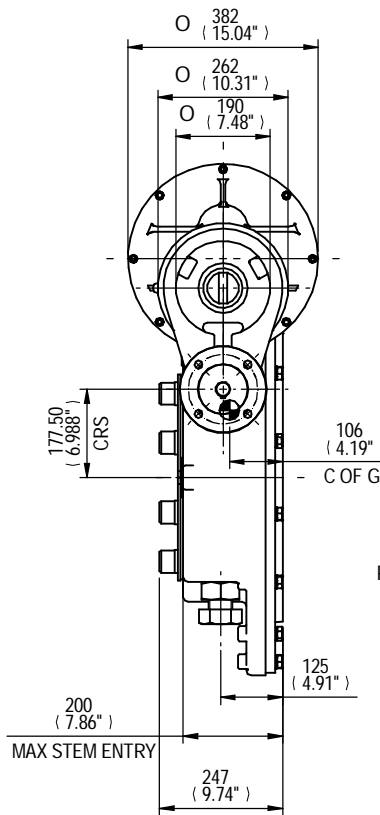
Drawing Number  
**PUB-IW115IR35AS5BB**



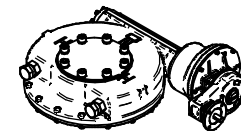
**VIEWS SHOWING MANUAL UNIT RATIOS 1190/ 1370/ 1600/ 1910/ 2290/ 2650/ 3100/ 3680/ 4530/ 5390**



**MANUAL UNIT**

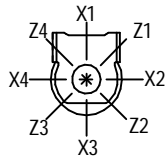


**VIEWS SHOWING MOTORISED UNIT RATIOS 1190/ 1370/ 1600/ 1910/ 2290/ 2650/ 3100/ 3680/ 4530/ 5390**



**MOTORISED UNIT**

PLAN VIEW OF GEARBOX IN CLOSED POSITION SHOWING STANDARD KEYWAY POSITIONS. ALTERNATIVES AVAILABLE ON REQUEST



	INPUT FLANGE DETAILS					
	FLANGE O/DIA.	SHAFT DIA.	RECESS DIA.	RECESS DEPTH	HOLE DETAILS (OFF CENTRES)	KEY DETAILS
ISO F10	Ø125 (Ø4.92)	Ø20.00-0.05 (Ø0.787"-0.002")	Ø70.05+0.15 (Ø2.758"+0.006")	4 (0.16")	4 HOLES Ø10.5 (Ø0.41") ON Ø102.0 (Ø4.02") P.C.	6x6x40 (0.24"x0.24"x1.57")
FA10	Ø125 (Ø4.92)	Ø20.00-0.05 (Ø0.787"-0.002")	Ø58.70+0.15 (Ø2.311"+0.006")	4 (0.16")	4 HOLES Ø10.5 (Ø0.41") ON Ø102.0 (Ø4.02") P.C.	6x6x40 (0.24"x0.24"x1.57")
ISO F14	Ø175 (Ø6.89")	Ø30.00-0.05 (Ø1.181"-0.002")	Ø100.05+0.15 (Ø3.939"+0.006")	5 (0.20")	4 HOLES Ø16.5 (Ø0.65") ON Ø140.0 (Ø5.51") P.C.	8x7x40 (0.31"x0.28"x1.57")
ISO FA14	Ø175 (Ø6.89")	Ø30.00-0.05 (Ø1.181"-0.002")	Ø95.25+0.15 (Ø3.750"+0.006")	5 (0.20")	4 HOLES Ø16.5 (Ø0.65") ON Ø140.0 (Ø5.51") P.C.	8x7x40 (0.31"x0.28"x1.57")
ISO F16	Ø210 (Ø8.27")	Ø30.00-0.05 (Ø1.181"-0.002")	Ø130.05+0.15 (Ø5.120"+0.006")	5 (0.20")	4 HOLES Ø20.5 (Ø0.81") ON Ø165.0 (Ø6.50") P.C.	8x7x40 (0.31"x0.28"x1.57")
ISO FA16	Ø210 (Ø8.27")	Ø30.00-0.05 (Ø1.181"-0.002")	Ø126.92+0.18 (Ø4.997"+0.007")	5 (0.20")	4 HOLES Ø20.5 (Ø0.81") ON Ø165.0 (Ø6.50") P.C.	8x7x40 (0.31"x0.28"x1.57")

NOTES:  
CENTRE OF GRAVITY IS INDICATIVE ONLY AND CHANGES WITH RATIO

BASEPLATE DETAILS	
ISO 5211	HOLES DETAILS (22.5° OFF CENTRES)
ISO F40	8 HOLES M36x36 (1.42") DEEP ON Ø406.0 (Ø15.98") P.C.
FA40	8 HOLES 1.25" UNCx36 (1.42") DEEP ON Ø406.4 (Ø16.00") P.C.

MAX BORE SQ KEY		MAX BORE RECTANGULAR KEY	
STD	BORE	BORE	KEY
BS4235	-	270.0	63x32
BS46	-	10"	2.1/2"x1.7/8"
ANSI B17.1	9.4"	2.1/2" SQ	10.125"

AS PART OF CONTINUOUS PRODUCT DEVELOPMENT, ALL DETAILS SUBJECT TO CHANGE WITHOUT PRIOR NOTICE. FOR UP TO DATE DETAILS PLEASE VISIT [www.rotork.com](http://www.rotork.com)

**rotork**  
Gears  
Leeds - UK  
[www.rotork.com](http://www.rotork.com)

This drawing is confidential and is the property of Rotork Gears and must not be reproduced either wholly or partly. All rights in respect of patents, designs and copyrights are reserved. © 2013

Document type	<b>PUBLICITY</b>	Mass	<b>522.1 kg</b>	Title	<b>NW/MOW115IR35 QUARTER TURN GEARBOX BIG BORE, RATIOS 1190/ 1370/ 1600/ 1910/ 2290/ 2650/ 3100/ 3680/ 4530/ 5390-1</b>
		Dimensions in mm			
		Scale		1:20	
Created	<b>M JONES</b>	<b>10/09/2013</b>	Drawing Number		
Checked	<b>J DODD</b>	<b>12/09/2013</b>	<b>PUB-IW115IR35AS5BB</b>		
Approved			Sheet 1 of 1 Size A3		