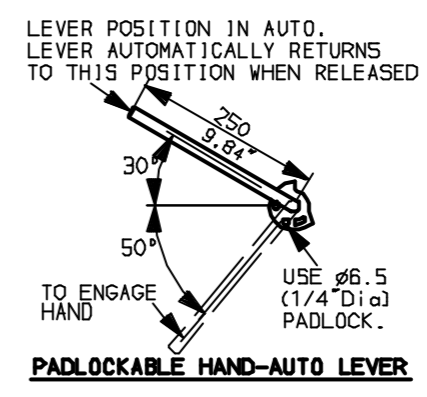
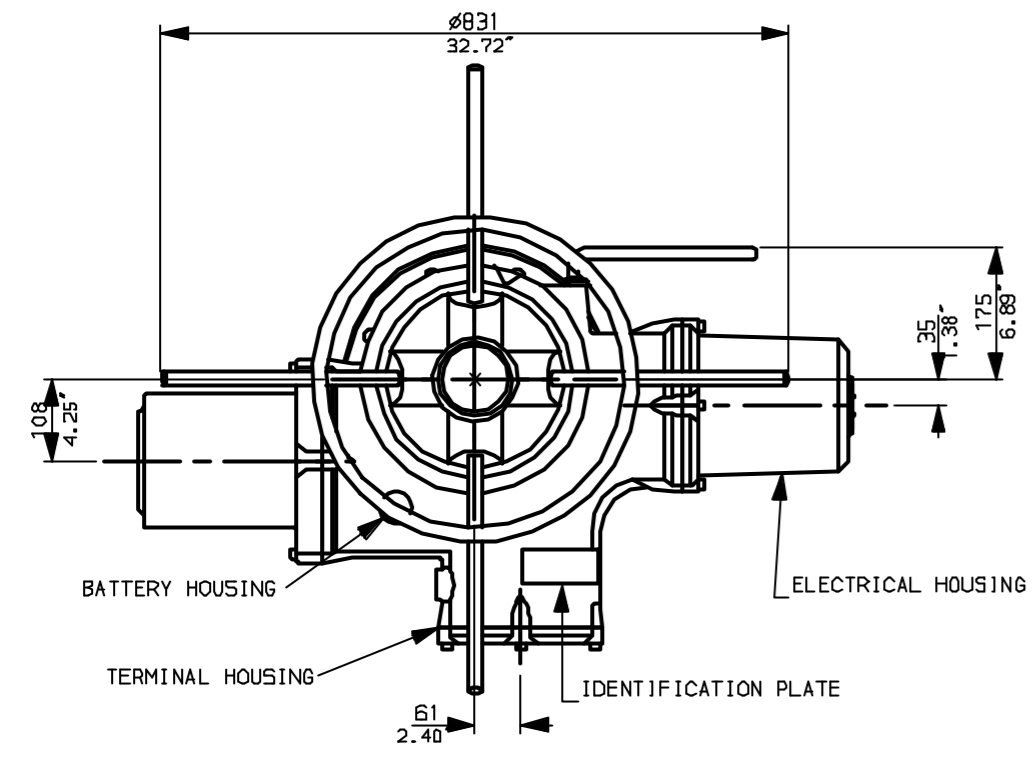
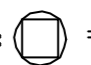
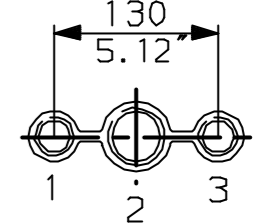


G  
F  
E  
D  
C  
B  
A

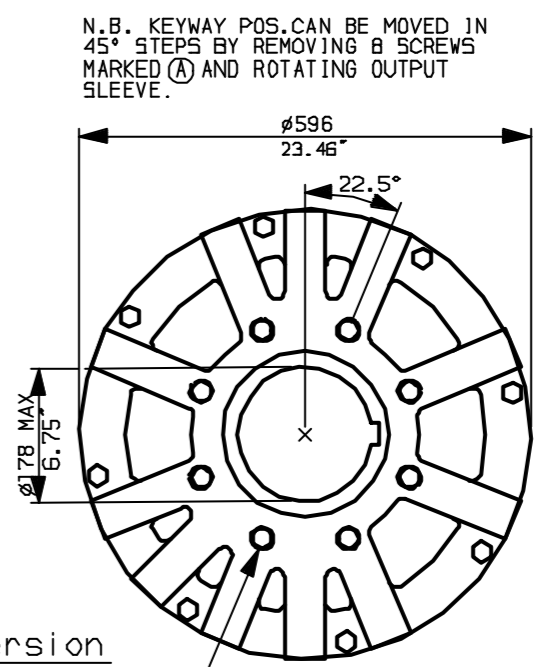
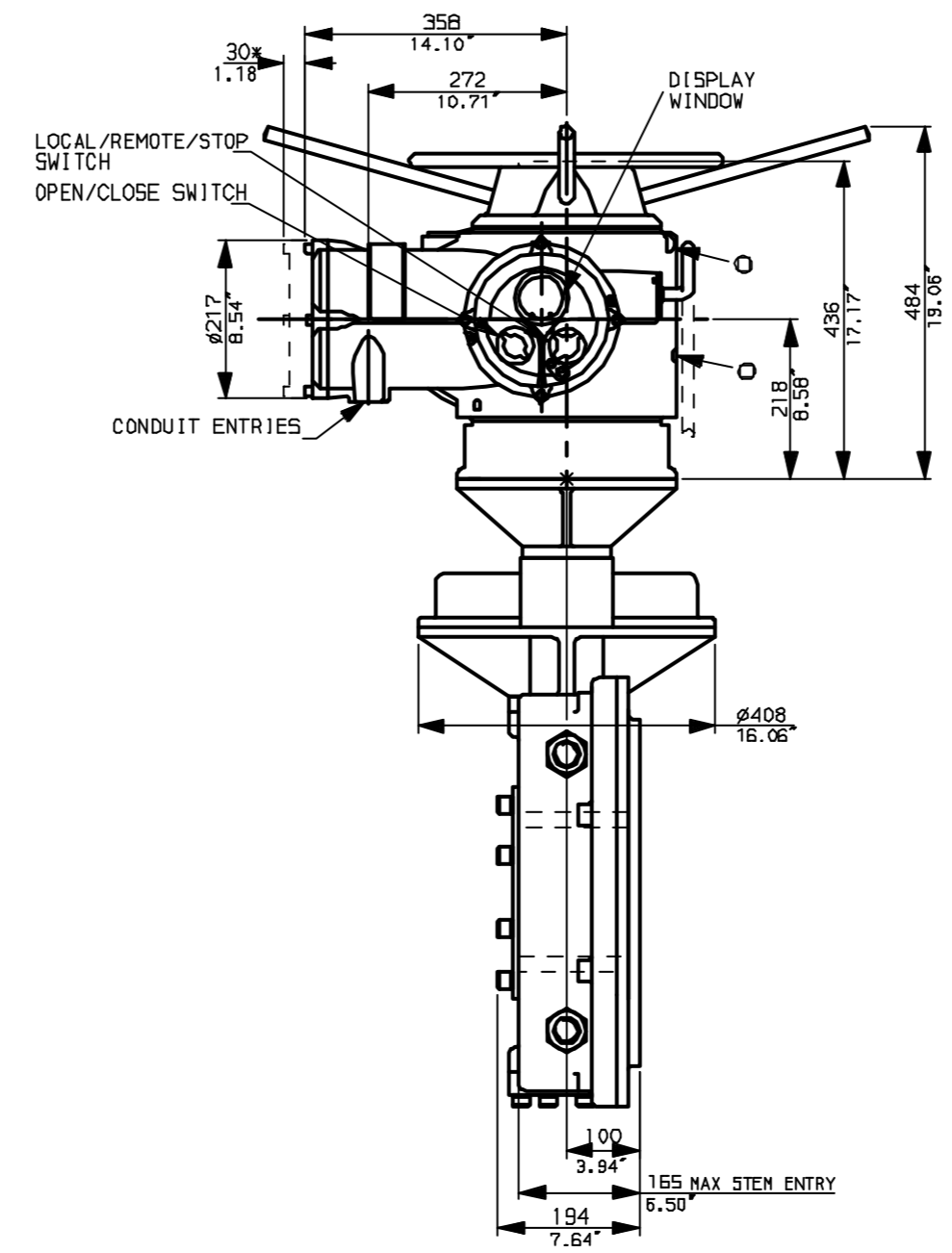
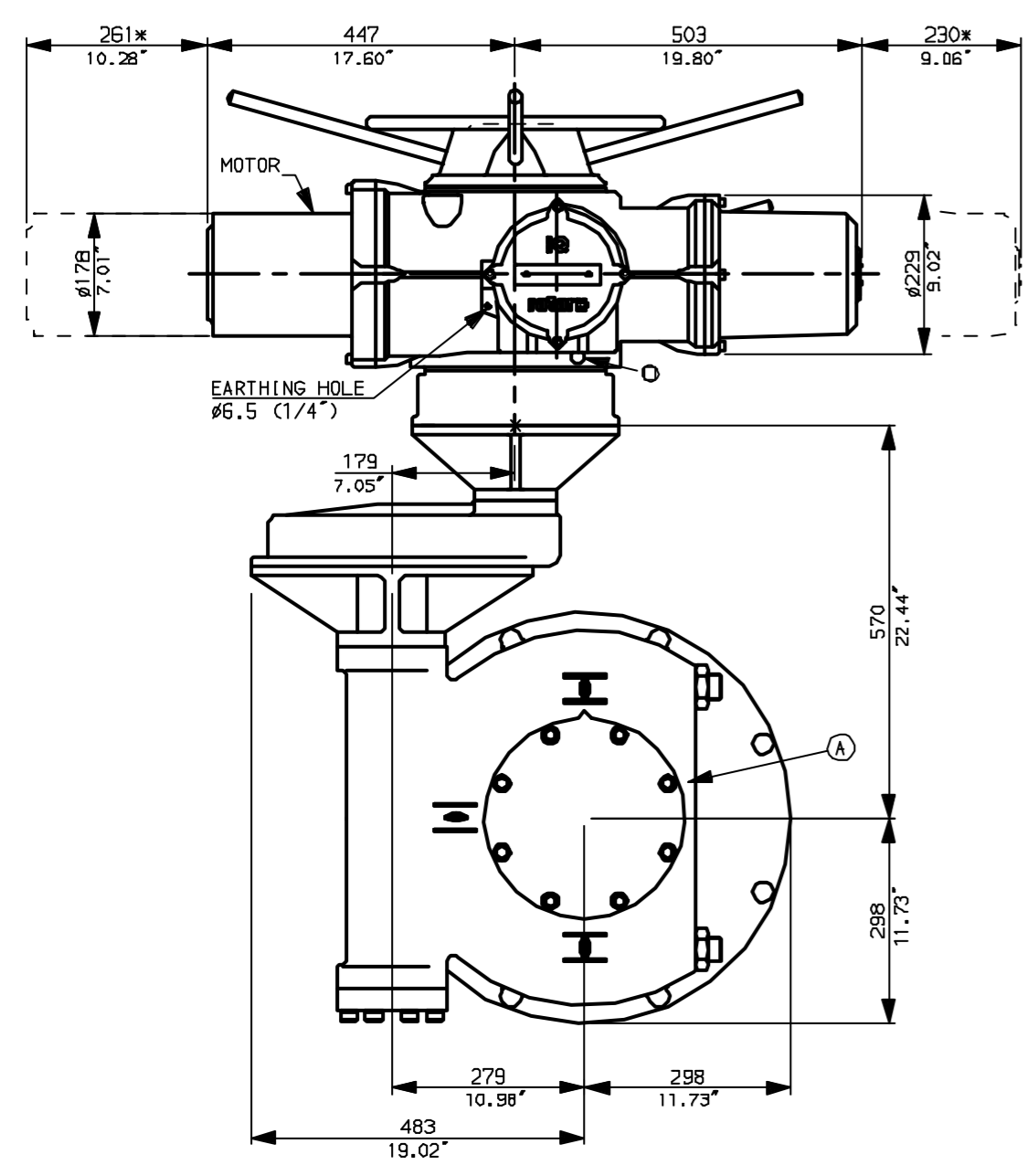


NOTES:  
 \* DIMENSIONS WITH '\*' INDICATE COVER REMOVAL ALLOWANCE  
 : NETT WEIGHT = 462kg (1016lbs)  
 :  = OIL FILLER/DRAIN PLUG  
 : THE INTERFACE PROVIDED FOR MOUNTING THE ACTUATOR OR SECOND STAGE GEARBOX ONTO THE VALVE SHOULD CONFORM TO GOOD ENGINEERING PRACTICES, ENSURING ADEQUATELY TOLERANCED LIMITS FOR PARALLELISM, PERPENDICULARITY AND CONCENTRICITY.

**CONDUIT ENTRIES (N.T.S)**



Nos.1 & 3 TAPPED 1" NPT  
 No.2 TAPPED 1 1/2" NPT  
 STD ALTERNATIVES IF SPECIFIED  
 2 X M25, 1 X M40  
 2 X PG16, 1 X PG29



"F" version  
 8 HOLES TAPPED M20 x 30 DP  
 EQUI-SPACED AS SHOWN ON A  
 298 PCD (ISO 5211-F30).  
 "FA" version  
 8 HOLES TAPPED 3/4" UNC x 1.18" dp  
 EQUI-SPACED AS SHOWN ON A  
 11.75" PCD (MSS SP101-FA30).



Rotork Controls Ltd.  
 Bath England, BA1 3JQ.  
 (Phone 01225-733200)  
 Rotork Controls Inc.  
 Rochester, NY 14624  
 (Phone 585-328-1550)

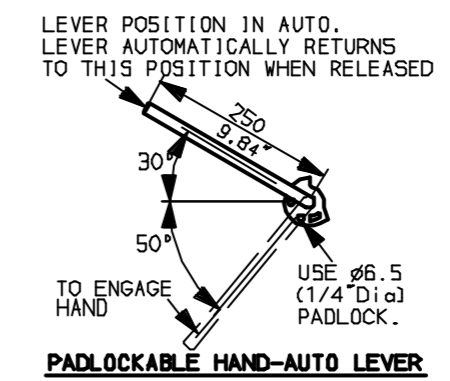
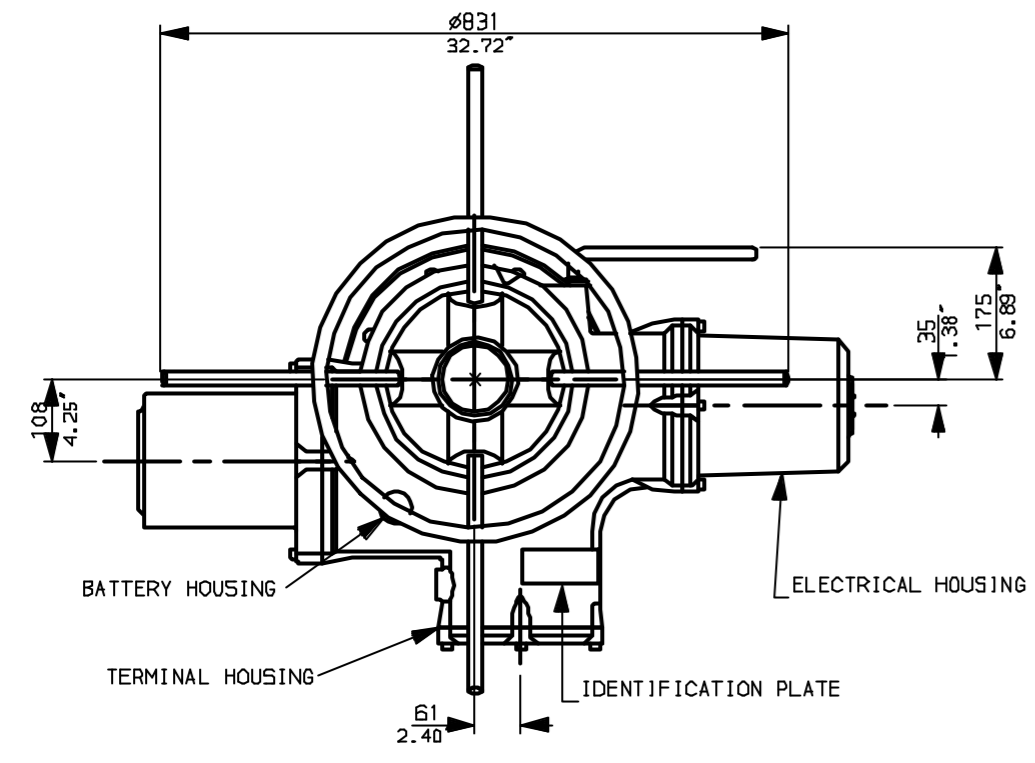
Title IQ40, THW, IW9RL,		
STANDARD DIMENSIONAL DATA		
Drawn CAD	Checked PRE	Ref Data Sheet
Date April 04	Job No	<b>IQ40THW_IW9R</b>

NOTE:  
 Gearbox is shown with LOW Ratio Input Reducer.  
 (ie Ratios 180, 240, 360, 480, 540, 720)  
 See Data Sheet with IW9Rh for HIGH ratio option.

01	First Issue.
Scale	1:10 THIRD ANGLE PROJECTION
Drawing Number	<b>IQ40THW_IW9RL</b>

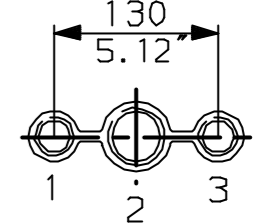
1 | 2 | 3 | 4 | 5 | 6 | 7 | 8 | 9 | 10

G  
F  
E  
D  
C  
B  
A

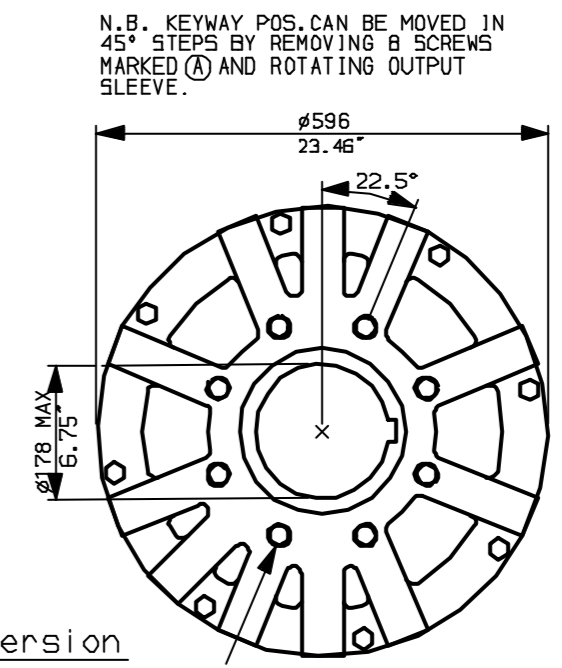
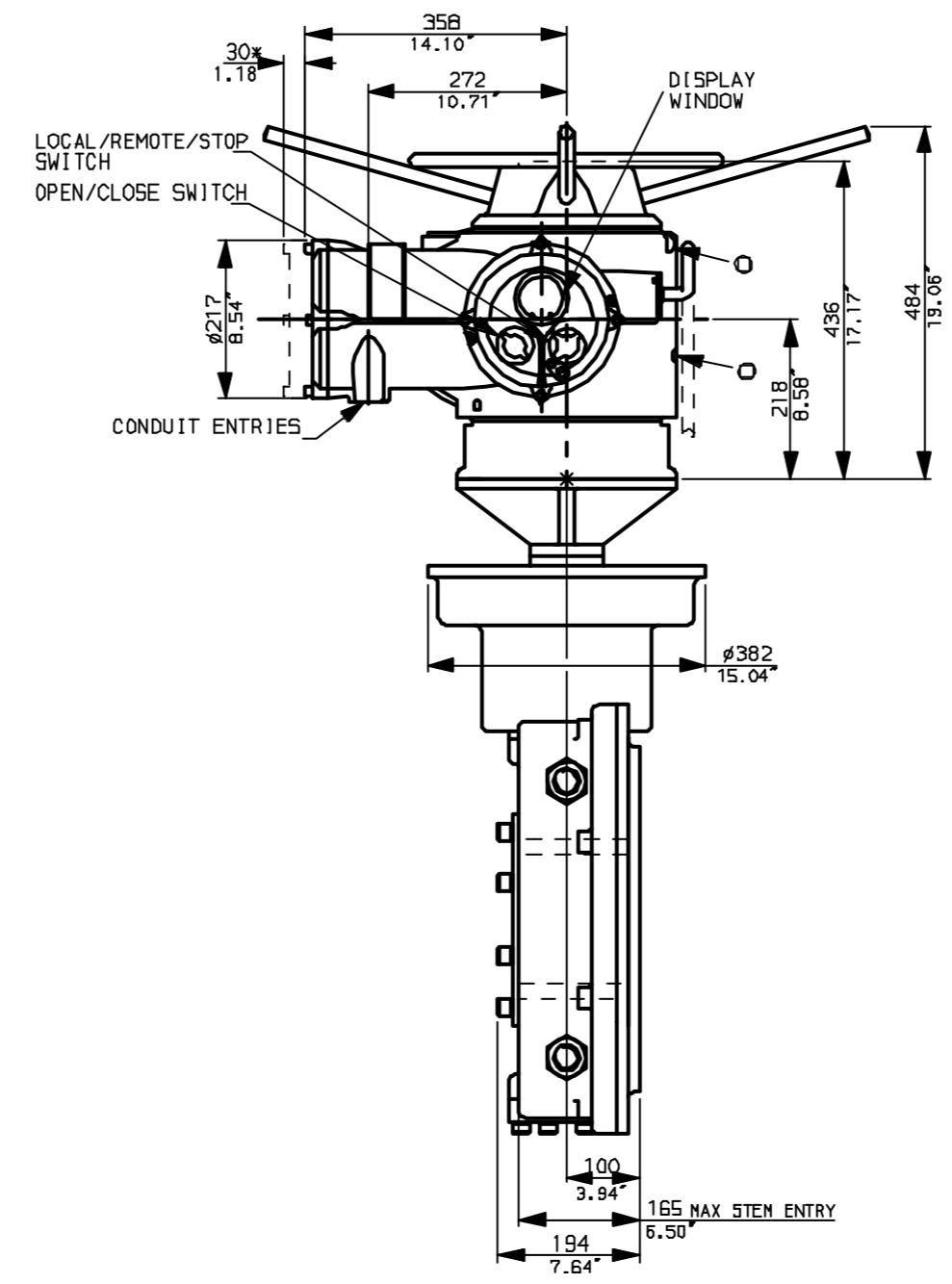
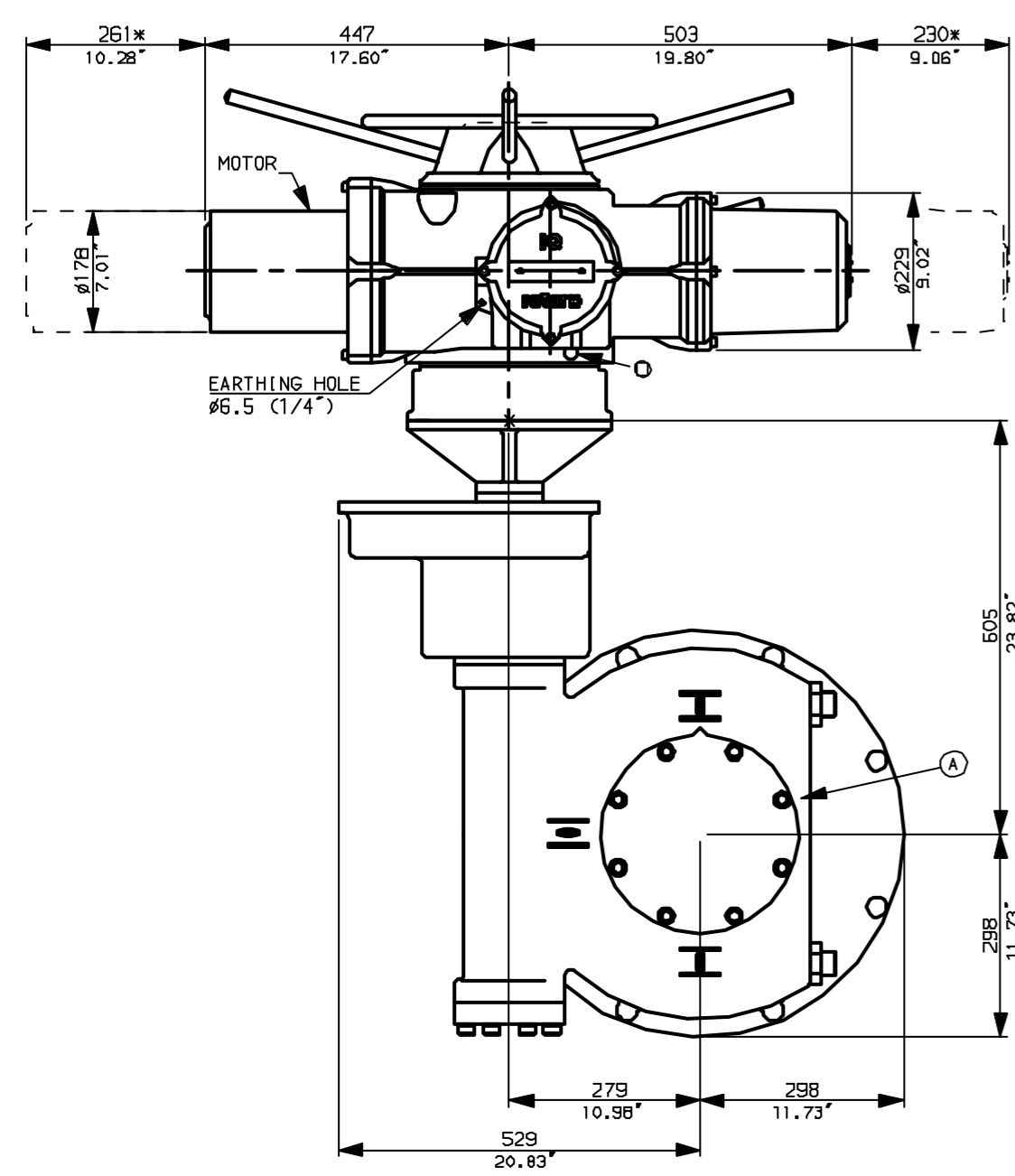


**NOTES:**  
 \* DIMENSIONS WITH '\*' INDICATE COVER REMOVAL ALLOWANCE  
 : NETT WEIGHT = 490kg (1078lbs)  
 :  $\odot$  = OIL FILLER/DRAIN PLUG  
 : THE INTERFACE PROVIDED FOR MOUNTING THE ACTUATOR OR SECOND STAGE GEARBOX ONTO THE VALVE SHOULD CONFORM TO GOOD ENGINEERING PRACTICES, ENSURING ADEQUATELY TOLERANCED LIMITS FOR PARALLELISM, PERPENDICULARITY AND CONCENTRICITY.

**CONDUIT ENTRIES (N.T.S)**



Nos.1 & 3 TAPPED 1" NPT  
 No.2 TAPPED 1 1/2" NPT  
 STD ALTERNATIVES IF SPECIFIED  
 2 X M25, 1 X M40  
 2 X PG16, 1 X PG29



"F" version  
 8 HOLES TAPPED M20 x 30 DP  
 EQUI-SPACED AS SHOWN ON A  
 298 PCD (I50 5211-F30).  
 "FA" version  
 8 HOLES TAPPED 3/4" UNC x 1.18" dp  
 EQUI-SPACED AS SHOWN ON A  
 11.75" PCD (MSS SP101-FA30).



Rotork Controls Ltd.  
 Bath England, BA1 3JQ.  
 (Phone 01225-733200)  
 Rotork Controls Inc.  
 Rochester, NY 14624  
 (Phone 585-328-1550)

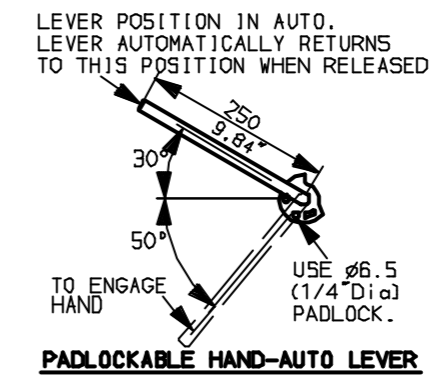
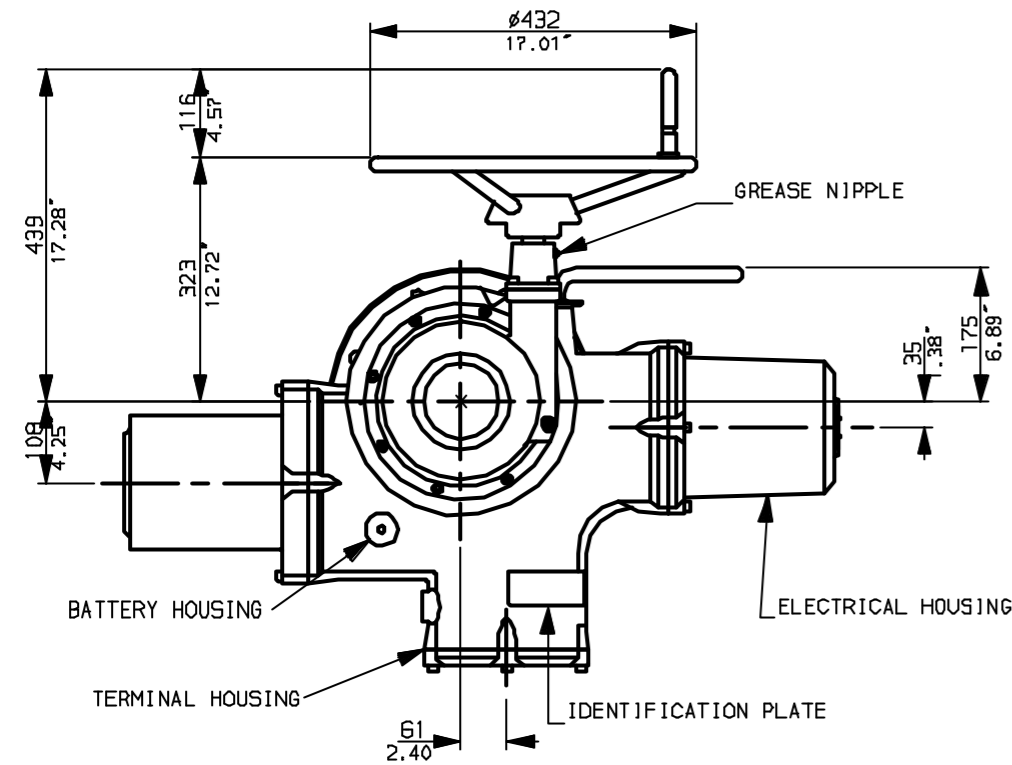
Title IQ40, THW, IW9Rh,		
STANDARD DIMENSIONAL DATA		
Drawn CAD	Checked PRE	Ref Data Sheet
Date April 04	Job No	<b>IQ40THW_IW9Rh</b>


**NOTE:**  
 Gearbox is shown with HIGH Ratio Input Reducer.  
 (ie Ratios 960, 1080, 1440, 2160, 2520, 3000)  
 See Data Sheet with IW9RL for LOW ratio option.

01	First Issue.
Scale	1:10 THIRD ANGLE PROJECTION
Drawing Number	<b>IQ40THW_IW9Rh</b>

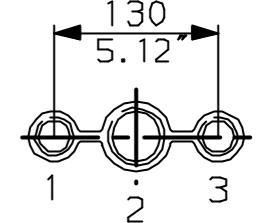
1 | 2 | 3 | 4 | 5 | 6 | 7 | 8 | 9 | 10

G  
F  
E  
D  
C  
B  
A

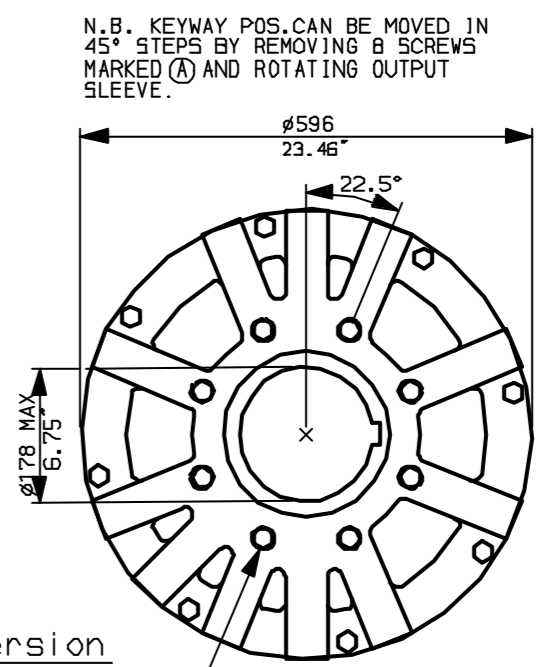
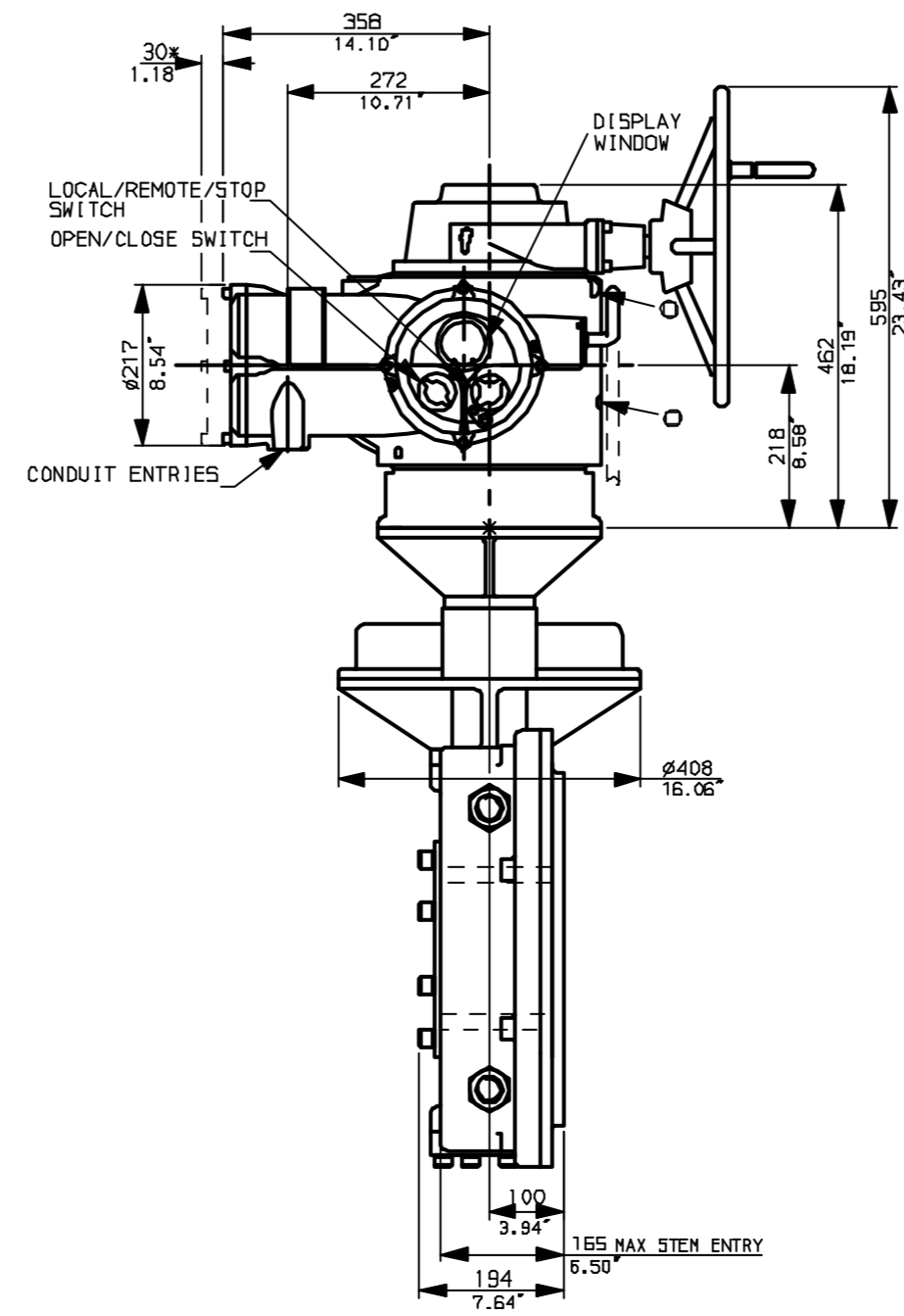
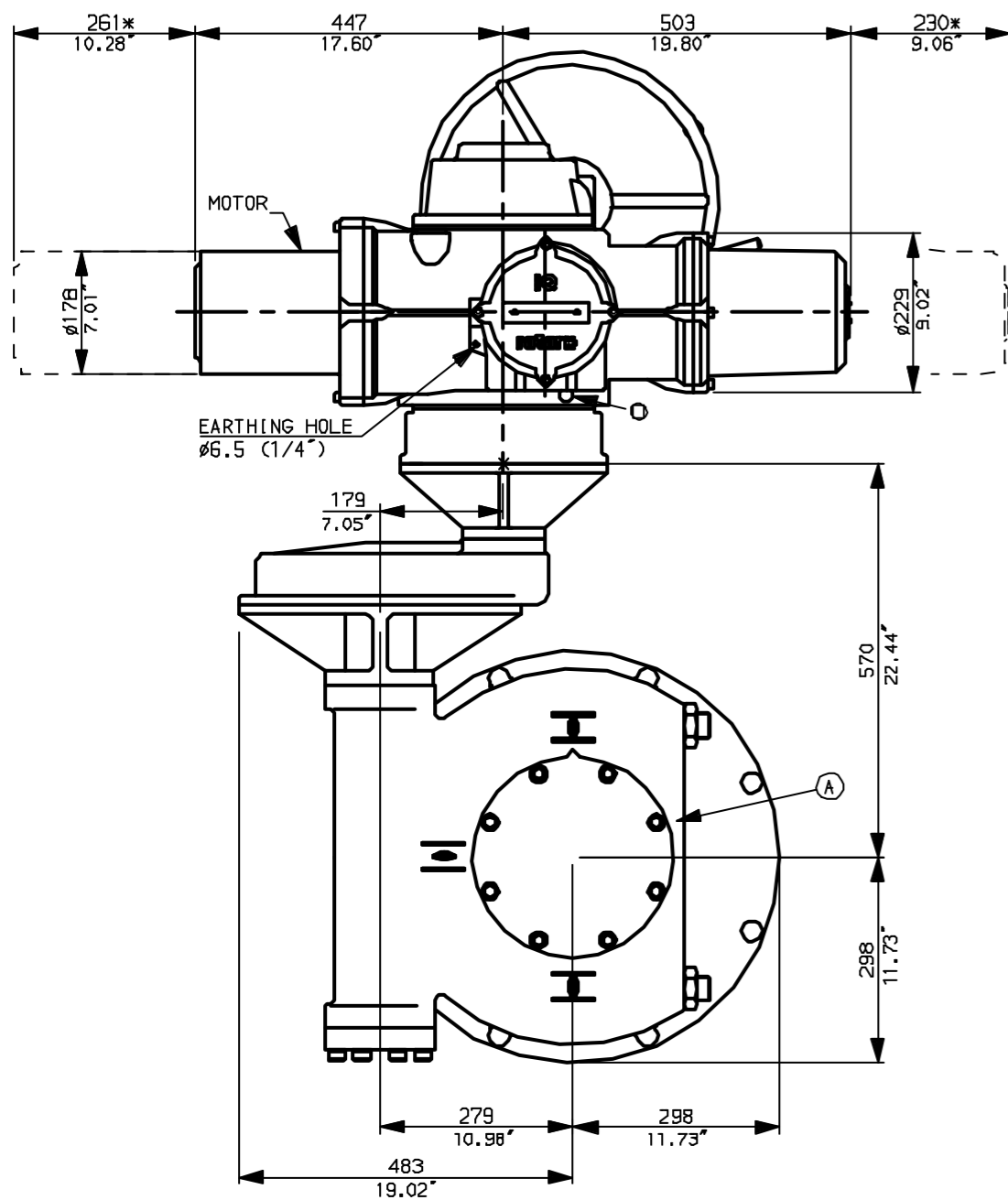


NOTES:  
 \* DIMENSIONS WITH '\*' INDICATE COVER REMOVAL ALLOWANCE  
 : NETT WEIGHT = 462kg (1016lbs)  
 :  = OIL FILLER/DRAIN PLUG  
 : THE INTERFACE PROVIDED FOR MOUNTING THE ACTUATOR OR SECOND STAGE GEARBOX ONTO THE VALVE SHOULD CONFORM TO GOOD ENGINEERING PRACTICES, ENSURING ADEQUATELY TOLERANCED LIMITS FOR PARALLELISM, PERPENDICULARITY AND CONCENTRICITY.

**CONDUIT ENTRIES** (N.T.S)



Nos.1 & 3 TAPPED 1" NPT  
 No.2 TAPPED 1 1/2" NPT  
 STD ALTERNATIVES IF SPECIFIED  
 2 X M25, 1 X M40  
 2 X PG16, 1 X PG29



"F" version  
 8 HOLES TAPPED M20 x 30 DP  
 EQUI-SPACED AS SHOWN ON A  
 298 PCD (ISO 5211-F30).  
 "FA" version  
 8 HOLES TAPPED 3/4" UNC x 1.18" dp  
 EQUI-SPACED AS SHOWN ON A  
 11.75" PCD (MSS SP101-FA30).

NOTE:  
 Gearbox is shown with LOW Ratio Input Reducer.  
 (ie Ratios 180, 240, 360, 480, 540, 720)  
 See Data Sheet with IW9Rh for HIGH ratio option.

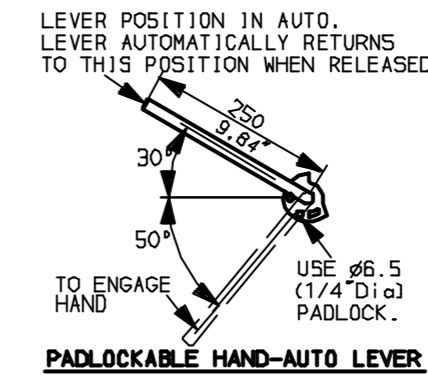
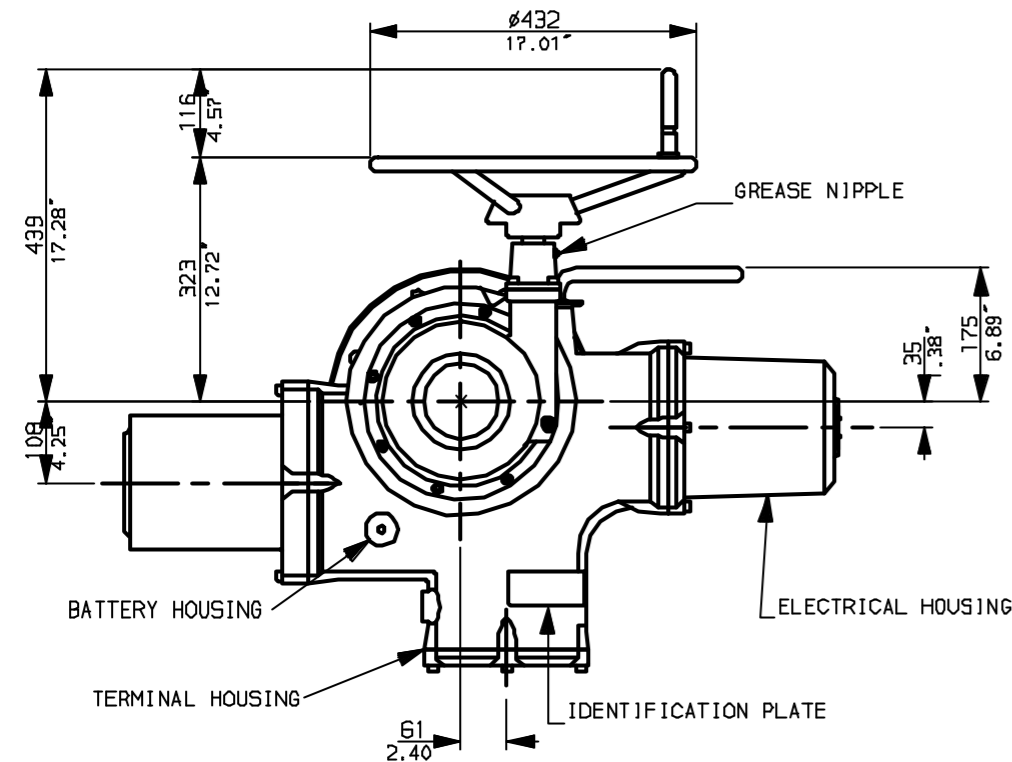


Rotork Controls Ltd. Bath England, BA1 3JQ. (Phone 01225-733200)	Title IQ40, SHW, IW9RL, STANDARD DIMENSIONAL DATA
Rotork Controls Inc. Rochester, NY 14624 (Phone 585-328-1550)	Drawn CAD Checked PRE Ref Data Sheet
Date April 04 Job No IQ40SHW_IW9R	

01 Issue	First Issue.
Scale	1:10 THIRD ANGLE PROJECTION
Drawing Number	IQ40SHW_IW9RL

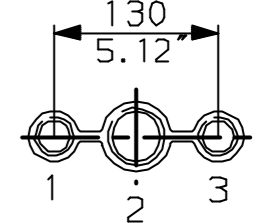
1 | 2 | 3 | 4 | 5 | 6 | 7 | 8 | 9 | 10

G  
F  
E  
D  
C  
B  
A

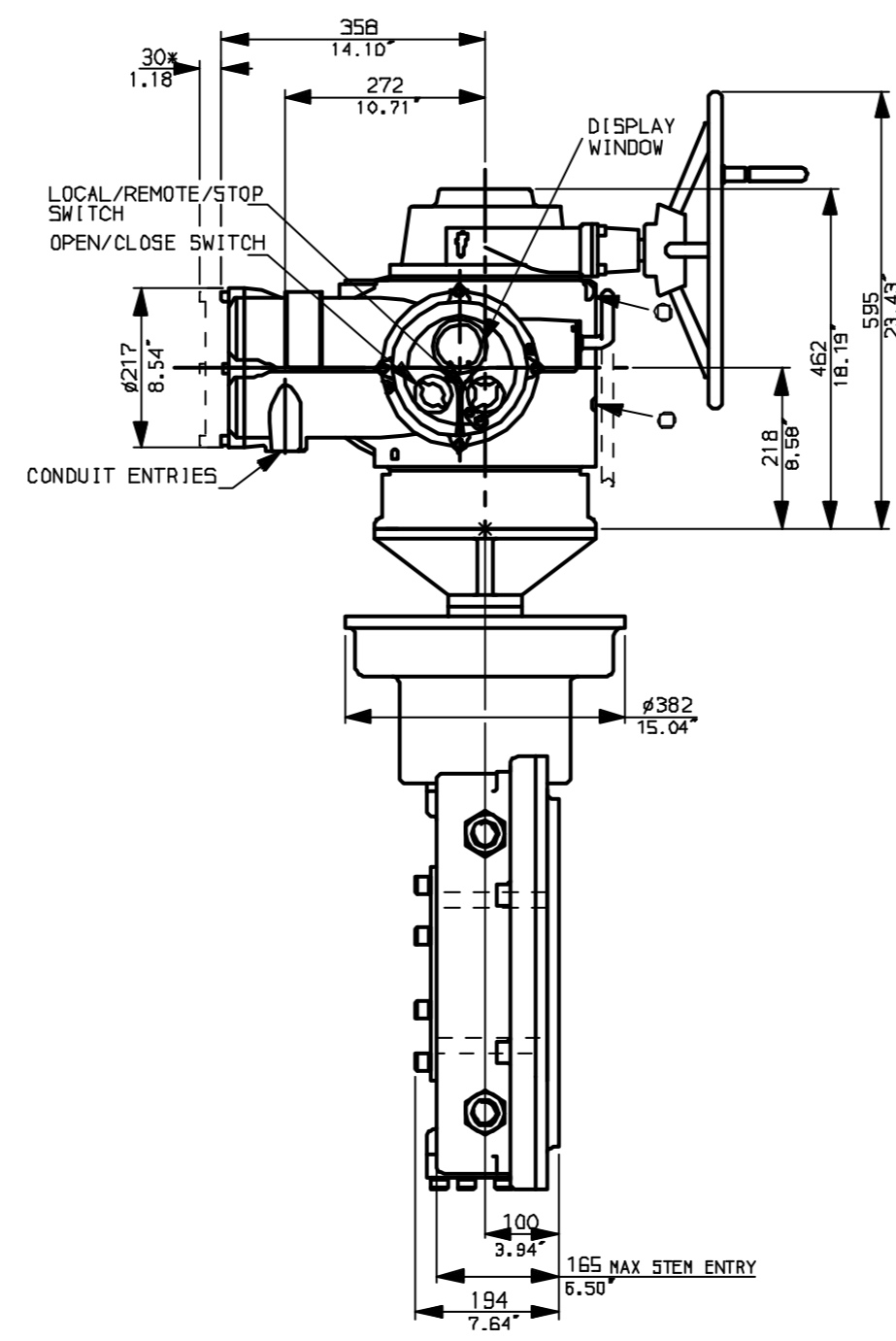
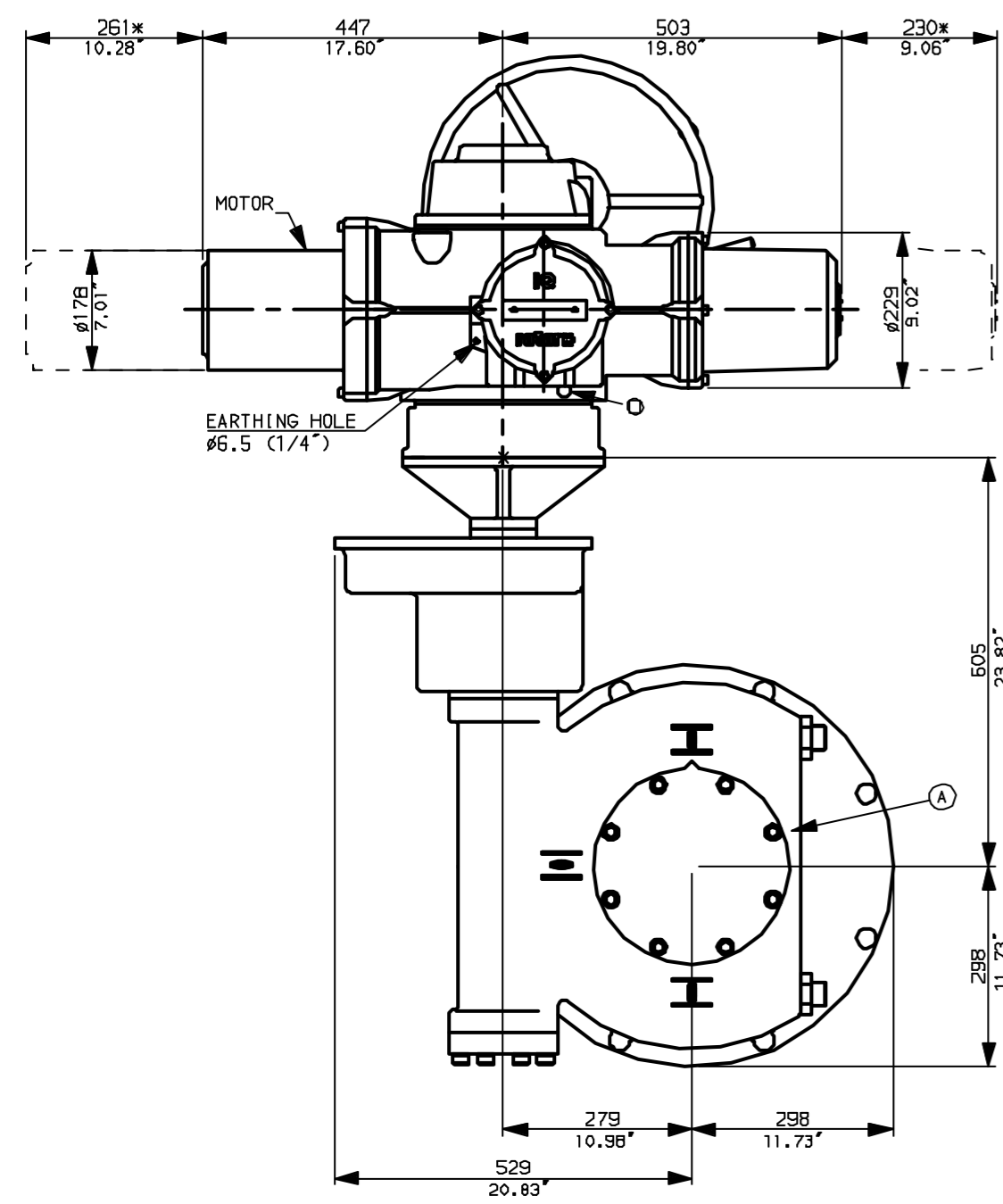


**NOTES:**  
 \* DIMENSIONS WITH '\*' INDICATE COVER REMOVAL ALLOWANCE  
 NETT WEIGHT = 490kg (1078lbs)  
 ○ = OIL FILLER/DRAIN PLUG  
 THE INTERFACE PROVIDED FOR MOUNTING THE ACTUATOR OR SECOND STAGE GEARBOX ONTO THE VALVE SHOULD CONFORM TO GOOD ENGINEERING PRACTICES, ENSURING ADEQUATELY TOLERANCED LIMITS FOR PARALLELISM, PERPENDICULARITY AND CONCENTRICITY.

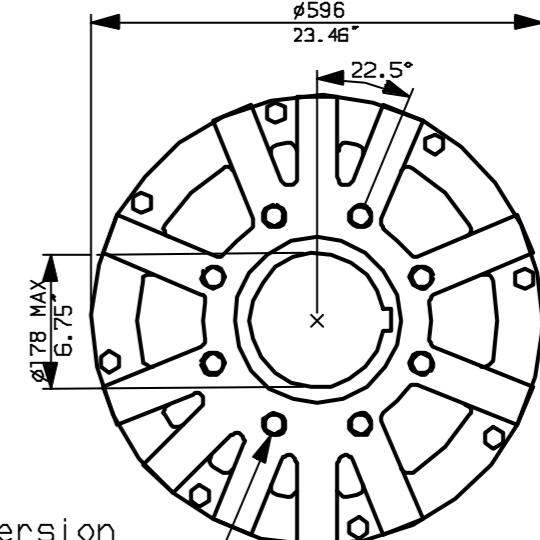
**CONDUIT ENTRIES (N.T.S)**



Nos.1 & 3 TAPPED 1" NPT  
 No.2 TAPPED 1 1/2" NPT  
 STD ALTERNATIVES IF SPECIFIED  
 2 X M25, 1 X M40  
 2 X PG16, 1 X PG29



N.B. KEYWAY POS. CAN BE MOVED IN 45° STEPS BY REMOVING 8 SCREWS MARKED (A) AND ROTATING OUTPUT SLEEVE.



"F" version  
 8 HOLES TAPPED M20 x 30 DP  
 EQUI-SPACED AS SHOWN ON A  
 298 PCD (ISO 5211-F30).

"FA" version  
 8 HOLES TAPPED 3/4" UNC x 1.18" dp  
 EQUI-SPACED AS SHOWN ON A  
 11.75" PCD (MSS SP101-FA30).



Rotork Controls Ltd.  
 Bath England, BA1 3JQ.  
 (Phone 01225-733200)  
 Rotork Controls Inc.  
 Rochester, NY 14624  
 (Phone 585-328-1550)

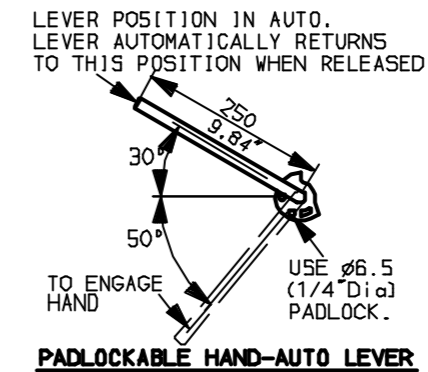
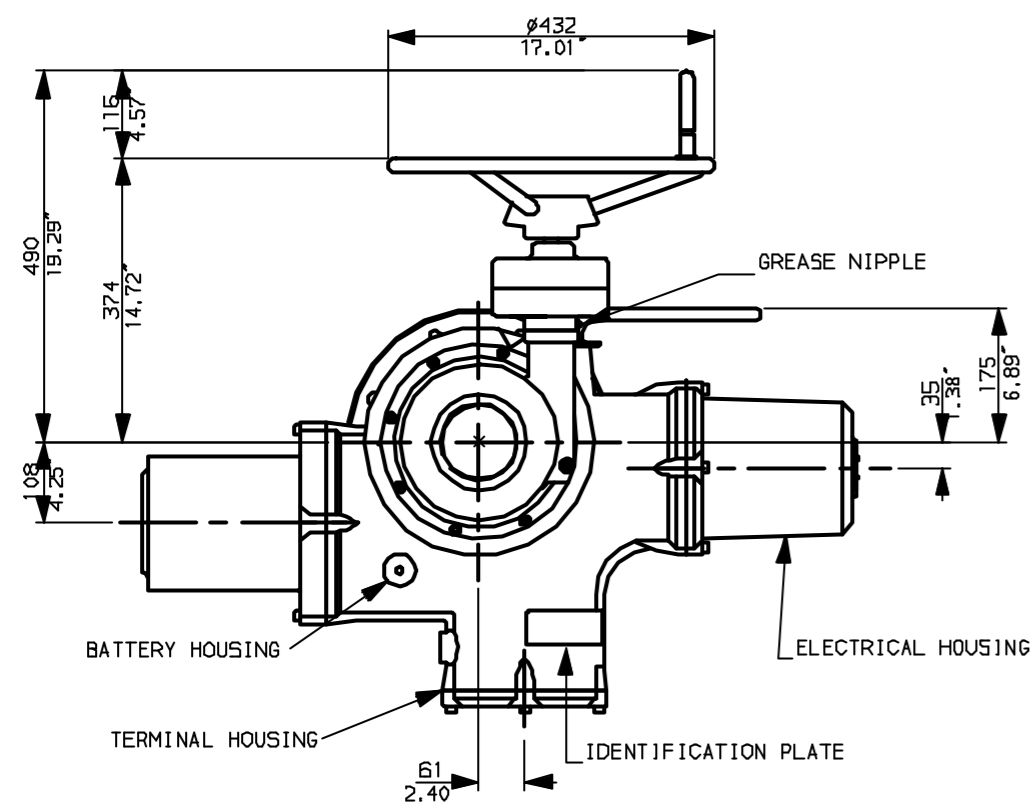
Title IQ40, SHW, IW9Rh,		
STANDARD DIMENSIONAL DATA		
Drawn CAD	Checked PRE	Ref Data Sheet
Date April 04	Job No	<b>IQ40SHW_IW9Rh</b>

**NOTE:**  
 Gearbox is shown with HIGH Ratio Input Reducer.  
 (ie Ratios 960, 1080, 1440, 2160, 2520, 3000)  
 See Data Sheet with IW9RL for LOW ratio option.

01	First Issue.
Scale	1:10 THIRD ANGLE PROJECTION
Drawing Number	<b>IQ40SHW_IW9Rh</b>

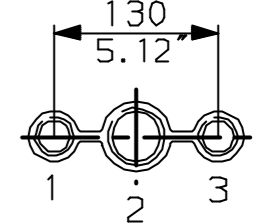
1 | 2 | 3 | 4 | 5 | 6 | 7 | 8 | 9 | 10

G  
F  
E  
D  
C  
B  
A

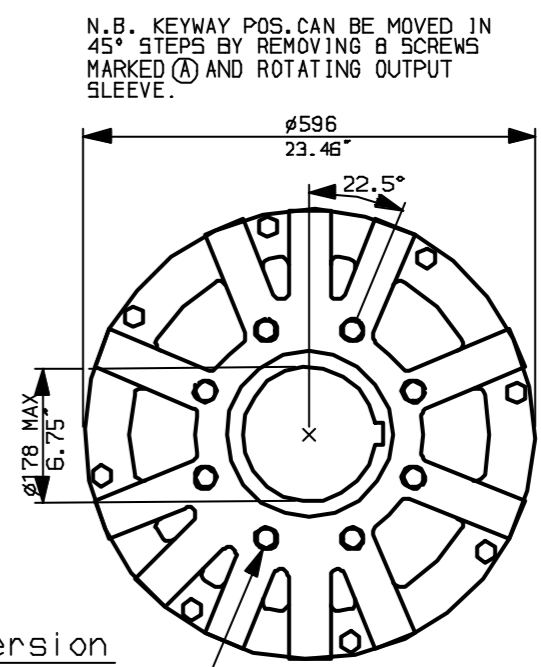
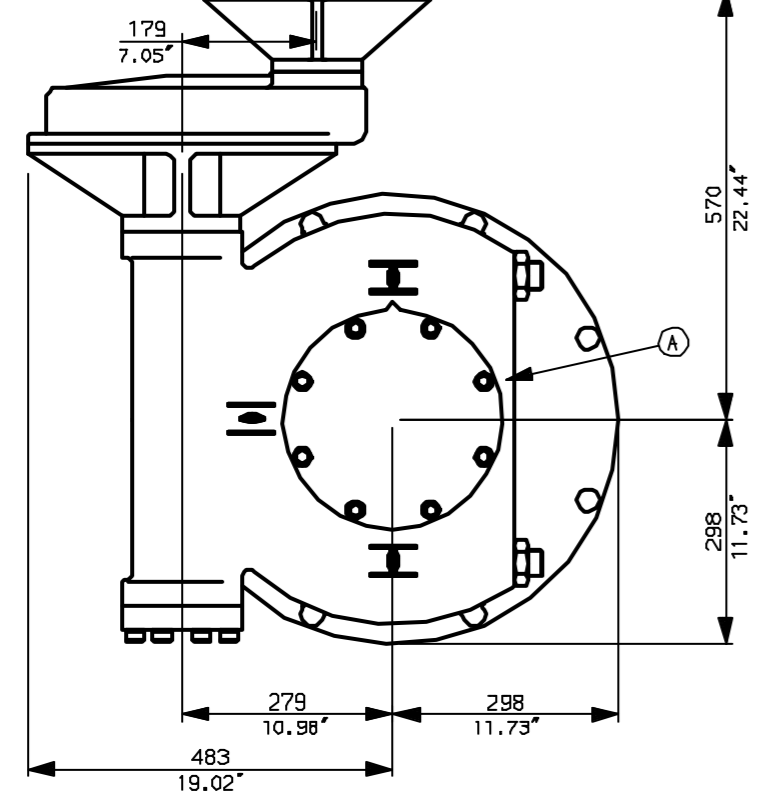
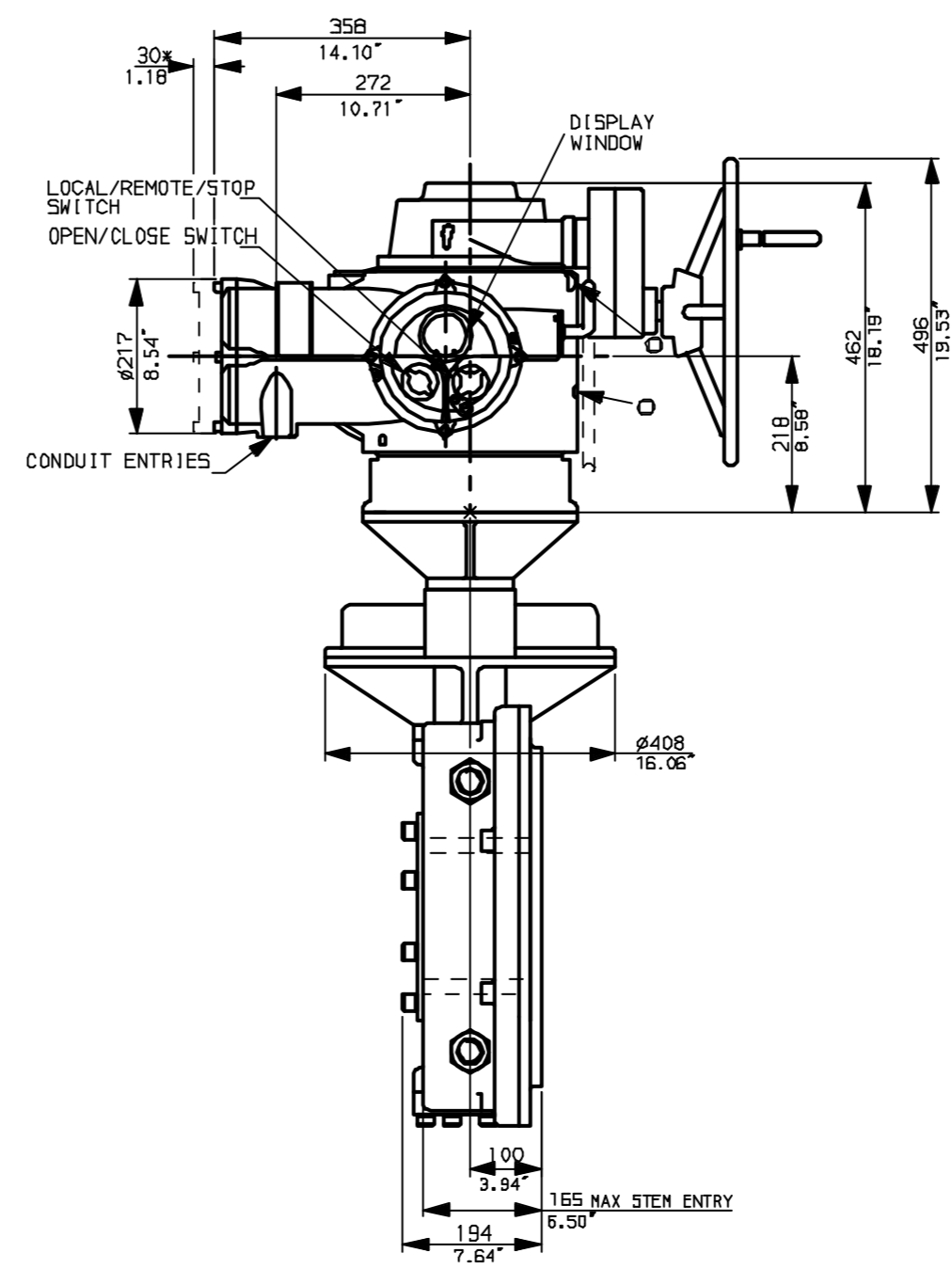
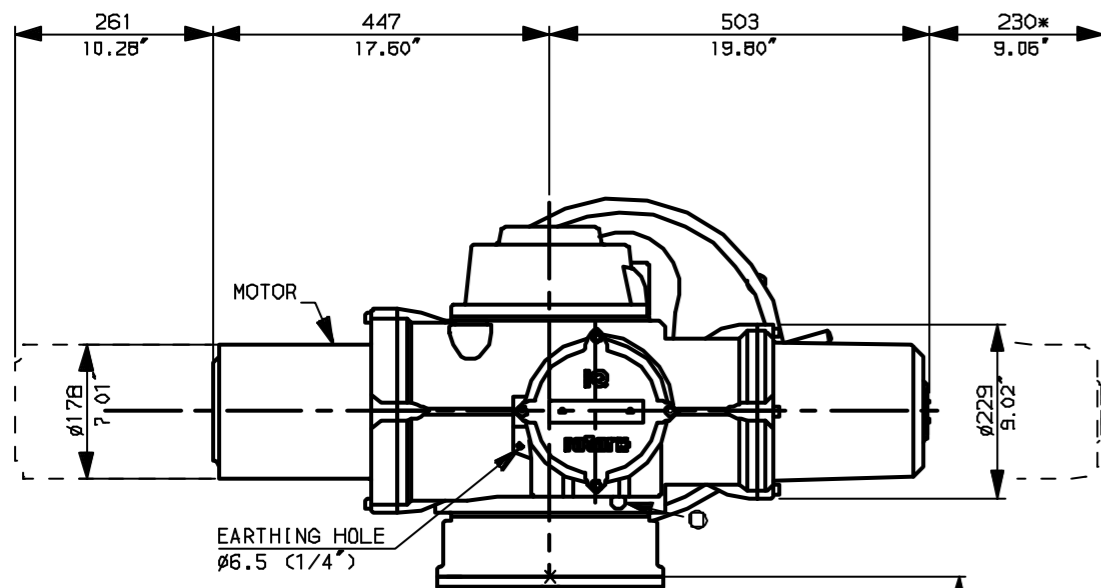


NOTES:  
 \* DIMENSIONS WITH '\*' INDICATE COVER REMOVAL ALLOWANCE  
 NETT WEIGHT = 462kg (1016lbs)  
 ○ = OIL FILLER/DRAIN PLUG  
 THE INTERFACE PROVIDED FOR MOUNTING THE ACTUATOR OR SECOND STAGE GEARBOX ONTO THE VALVE SHOULD CONFORM TO GOOD ENGINEERING PRACTICES, ENSURING ADEQUATELY TOLERANCED LIMITS FOR PARALLELISM, PERPENDICULARITY AND CONCENTRICITY.

**CONDUIT ENTRIES (N.T.S)**



Nos.1 & 3 TAPPED 1" NPT  
 No.2 TAPPED 1 1/2" NPT  
 STD ALTERNATIVES IF SPECIFIED  
 2 X M25, 1 X M40  
 2 X PG16, 1 X PG29



"F" version  
 8 HOLES TAPPED M20 x 30 DP EQUI-SPACED AS SHOWN ON A 298 PCD (ISO 5211-F30).

"FA" version  
 8 HOLES TAPPED 3/4" UNC x 1.18" dp EQUI-SPACED AS SHOWN ON A 11.75" PCD (MSS SP101-FA30).

NOTE:  
 Gearbox is shown with LOW Ratio Input Reducer. (ie Ratios 180,240,360,480,540,720)  
 See Data Sheet with IW9Rh for HIGH ratio option.



Rotork Controls Ltd.  
 Bath England, BA1 3JQ.  
 (Phone 01225-733200)

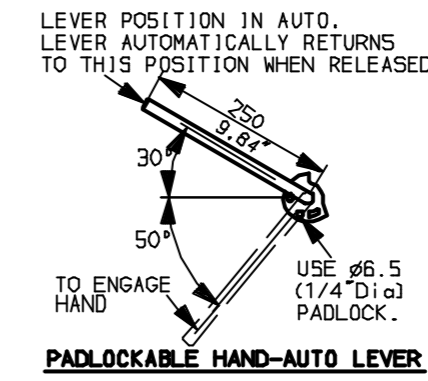
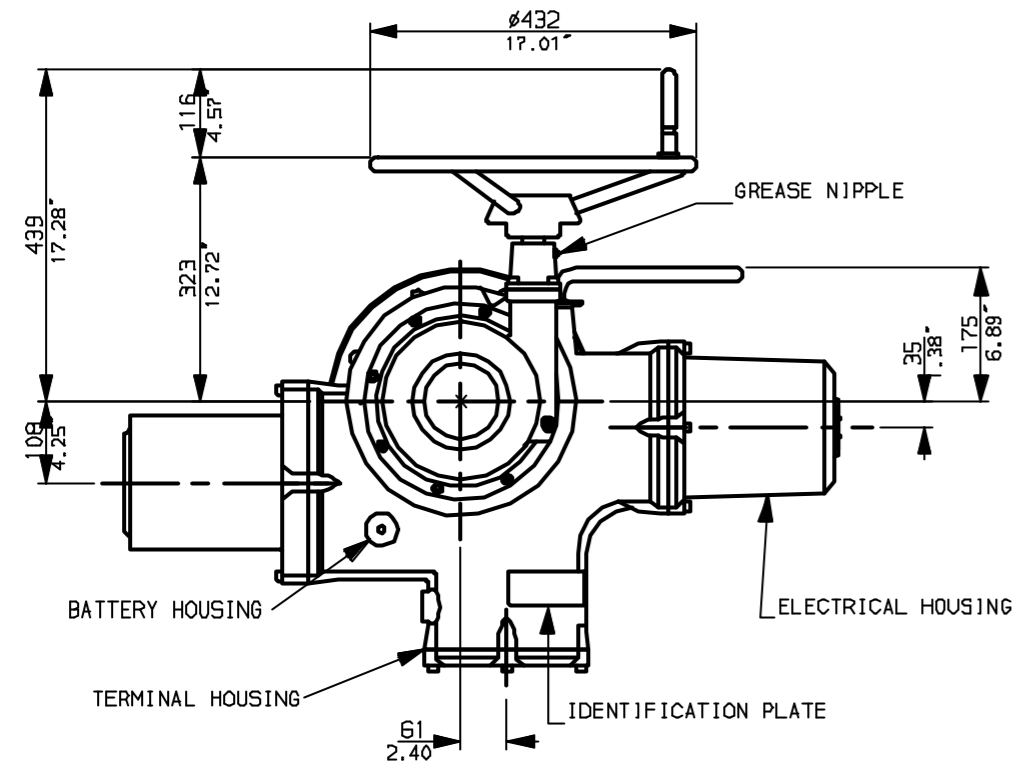
Rotork Controls Inc.  
 Rochester, NY 14624  
 (Phone 585-328-1550)

Title IQ40, SSHW, IW9RL		
STANDARD DIMENSIONAL DATA		
Drawn CAD	Checked PRE	Ref Data Sheet
Date April 04	Job No	<b>IQ40SSHW_IW9RL</b>

01	First Issue.
Scale	1:10 THIRD ANGLE PROJECTION
Drawing Number	<b>IQ40SSHW_IW9RL</b>

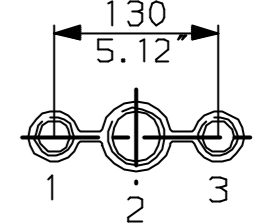
1 | 2 | 3 | 4 | 5 | 6 | 7 | 8 | 9 | 10

G  
F  
E  
D  
C  
B  
A

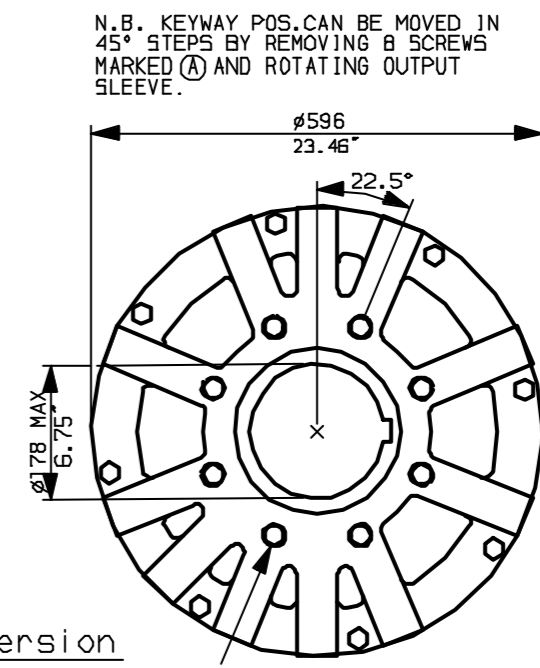
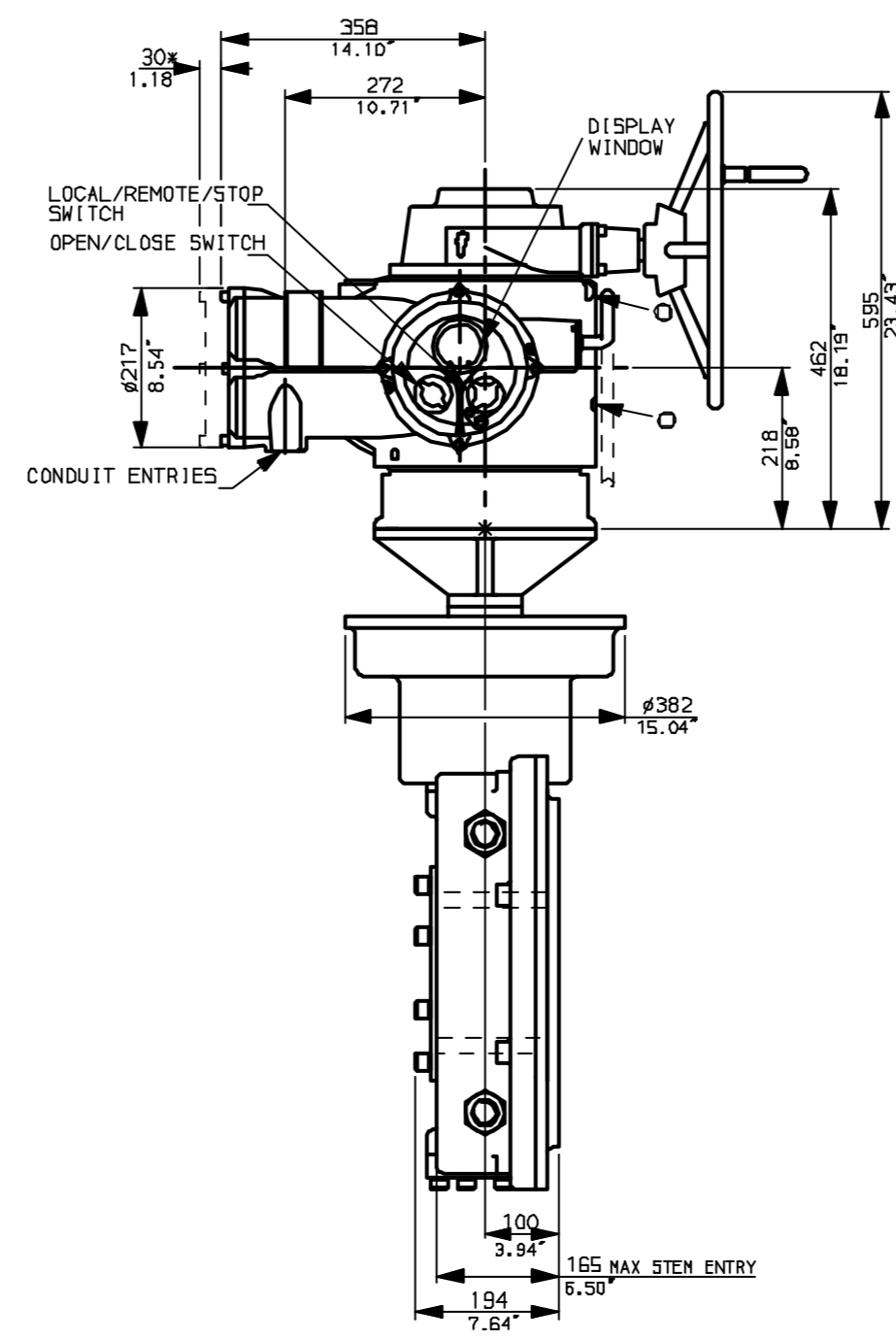
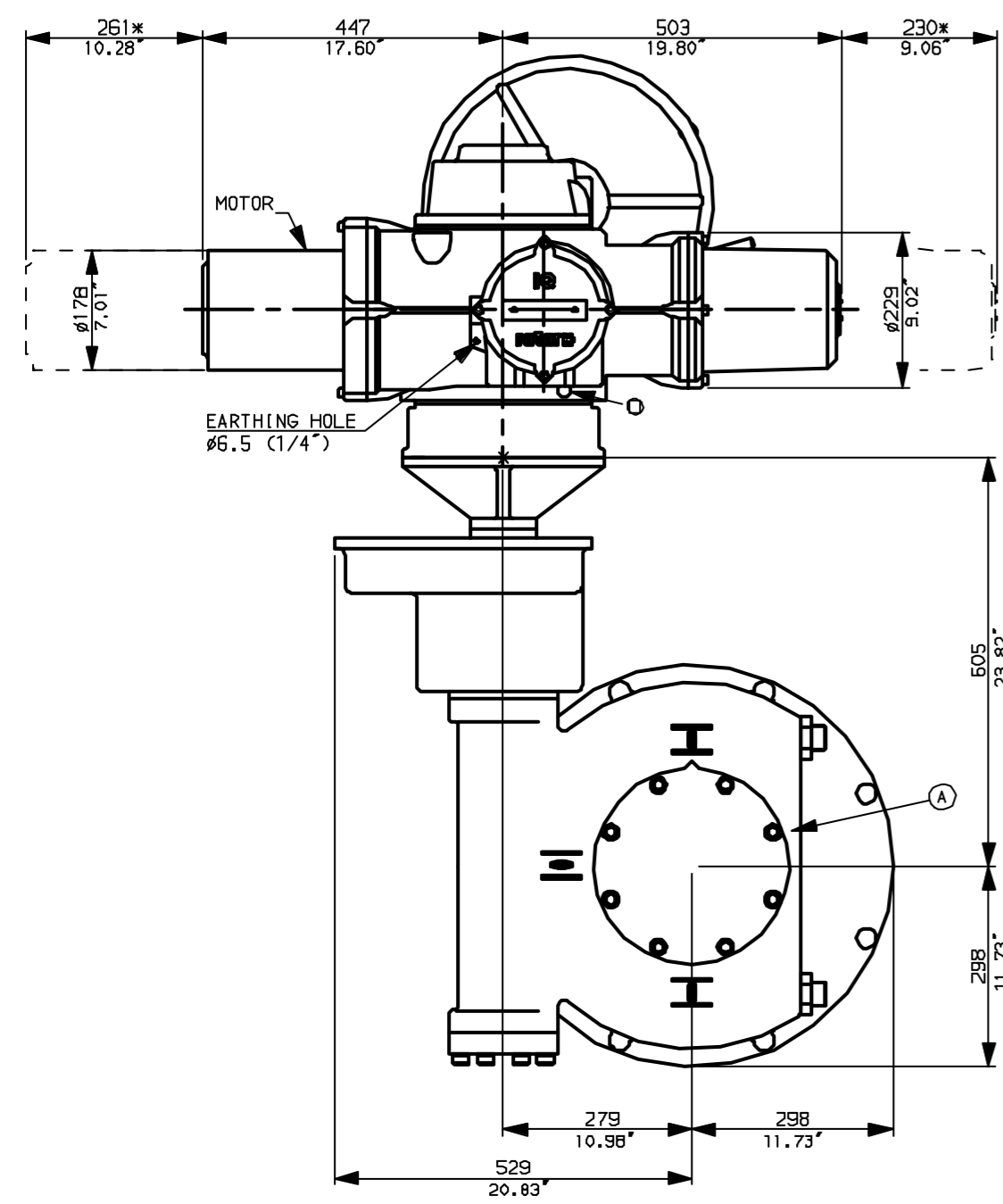


**NOTES:**  
 \* DIMENSIONS WITH '\*' INDICATE COVER REMOVAL ALLOWANCE  
 NETT WEIGHT = 490kg (1078lbs)  
 ○ = OIL FILLER/DRAIN PLUG  
 THE INTERFACE PROVIDED FOR MOUNTING THE ACTUATOR OR SECOND STAGE GEARBOX ONTO THE VALVE SHOULD CONFORM TO GOOD ENGINEERING PRACTICES, ENSURING ADEQUATELY TOLERANCED LIMITS FOR PARALLELISM, PERPENDICULARITY AND CONCENTRICITY.

**CONDUIT ENTRIES (N.T.S)**



Nos.1 & 3 TAPPED 1" NPT  
 No.2 TAPPED 1 1/2" NPT  
 STD ALTERNATIVES IF SPECIFIED  
 2 X M25, 1 X M40  
 2 X PG16, 1 X PG29



"F" version  
 8 HOLES TAPPED M20 x 30 DP EQUI-SPACED AS SHOWN ON A 298 PCD (ISO 5211-F30).  
 "FA" version  
 8 HOLES TAPPED 3/4" UNC x 1.18" dp EQUI-SPACED AS SHOWN ON A 11.75" PCD (MSS SP101-FA30).



Rotork Controls Ltd. Bath England, BA1 3JQ. (Phone 01225-733200)		Title IQ40, SHW, IW9Rh,	
Rotork Controls Inc. Rochester, NY 14624 (Phone 585-328-1550)		STANDARD DIMENSIONAL DATA	
Drawn CAD	Checked PRE	Ref Data Sheet	
Date April 04	Job No	IQ40SHW_IW9Rh	

**NOTE:**  
 Gearbox is shown with HIGH Ratio Input Reducer.  
 (ie Ratios 960, 1080, 1440, 2160, 2520, 3000)  
 See Data Sheet with IW9RL for LOW ratio option.

01 Issue	First Issue.
Scale	1:10 THIRD ANGLE PROJECTION
Drawing Number	IQ40SHW_IW9Rh

1 | 2 | 3 | 4 | 5 | 6 | 7 | 8 | 9 | 10