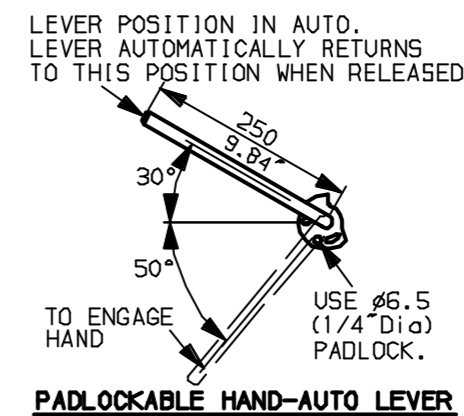
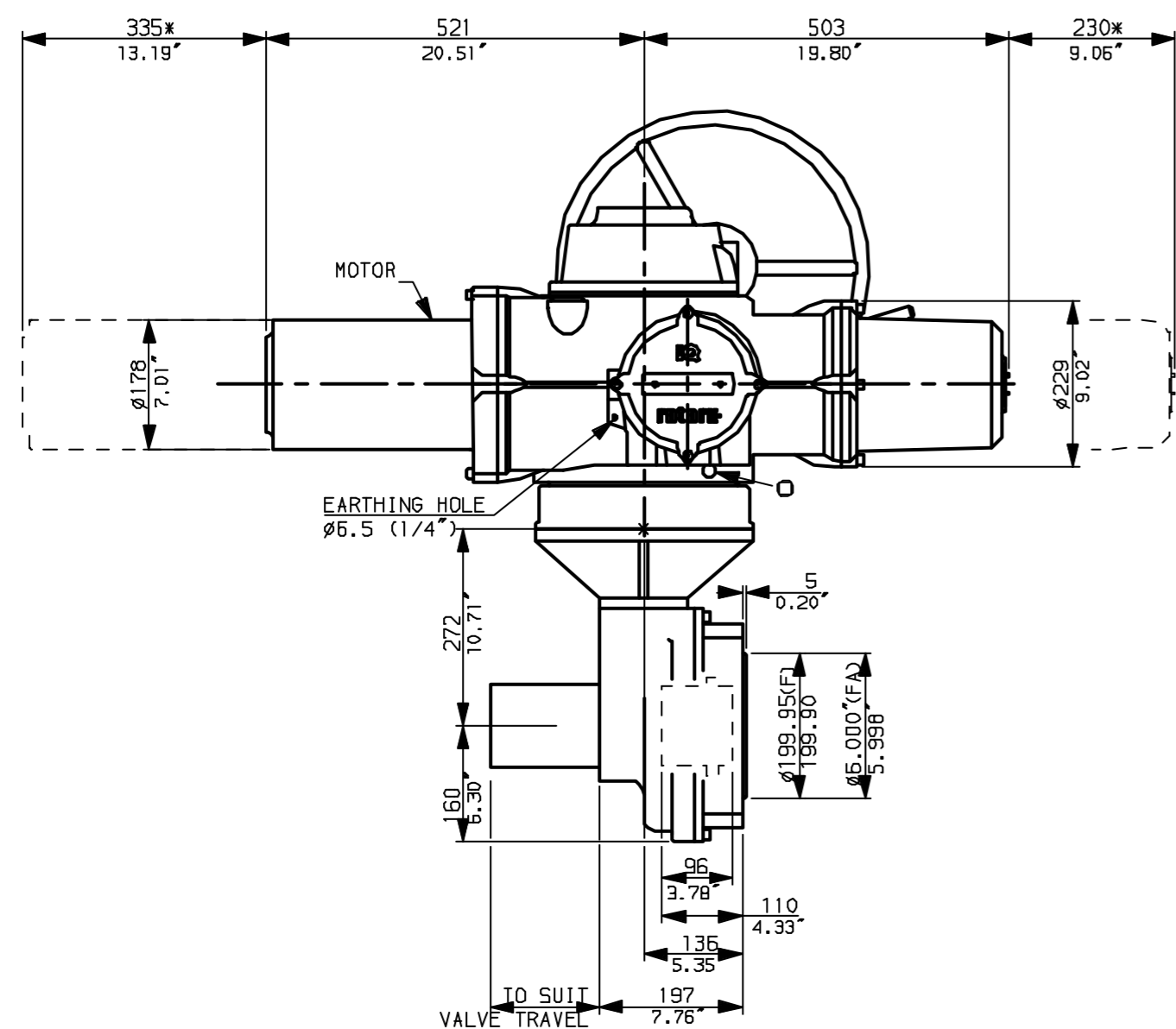
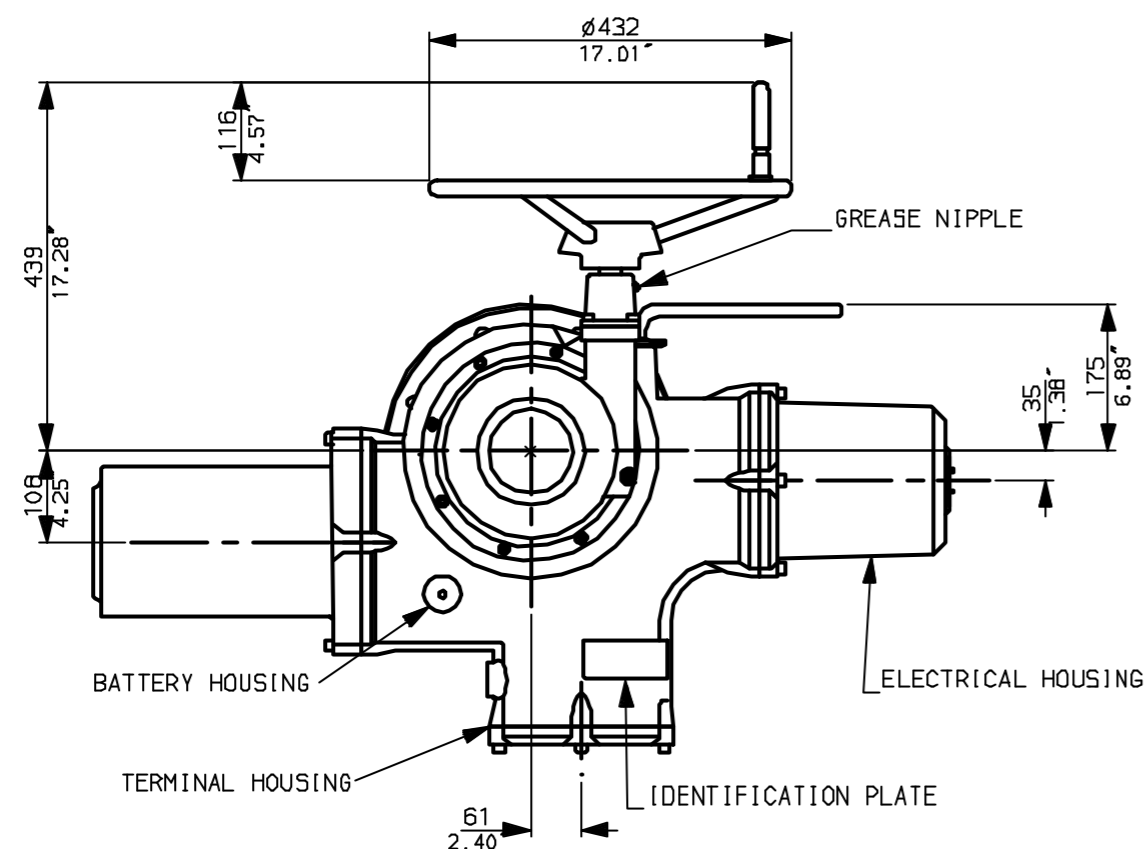
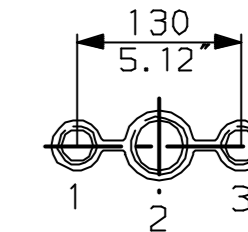


G  
F  
E  
D  
C  
B  
A

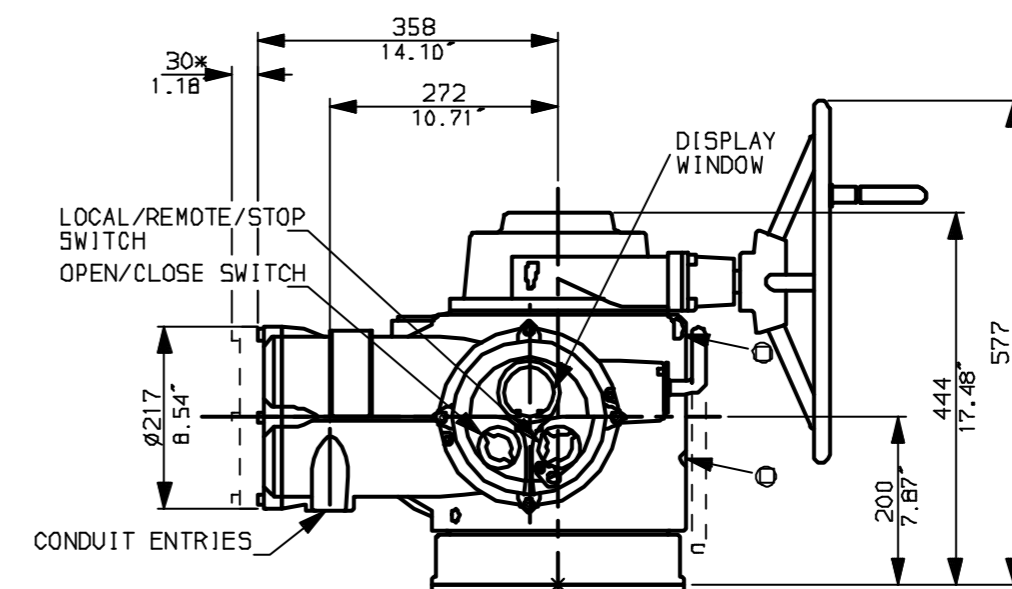


**NOTES:**  
 \* DIMENSIONS WITH '\*' INDICATE COVER REMOVAL ALLOWANCE  
 NETT WEIGHT = 285kg (627lbs)  
 ○ = OIL FILLER/DRAIN PLUG  
 THE INTERFACE PROVIDED FOR MOUNTING THE ACTUATOR OR SECOND STAGE GEARBOX ONTO THE VALVE SHOULD CONFORM TO GOOD ENGINEERING PRACTICES, ENSURING ADEQUATELY TOLERANCED LIMITS FOR PARALLELISM, PERPENDICULARITY AND CONCENTRICITY.

**CONDUIT ENTRIES (N.T.S)**



Nos.1 & 3 TAPPED 1" NPT  
 No.2 TAPPED 1 1/2" NPT  
 STD ALTERNATIVES IF SPECIFIED  
 2 X M25, 1 X M40  
 2 X PG16, 1 X PG29

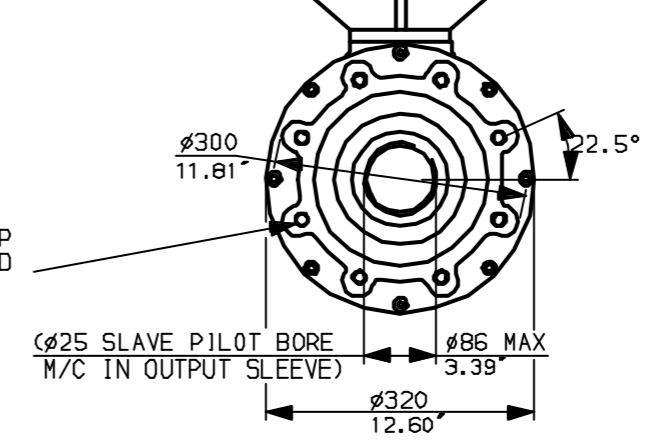


**"F" version**

8 HOLES TAPPED M16x20 DP EQUI-SPACED ON A 254 PCD (ISO5210 F25)

**"FA" version**

8 HOLES TAPPED 5/8" UNC x 0.8" dp EQUI-SPACED ON 10" PCD (MSS SP102-FA25).



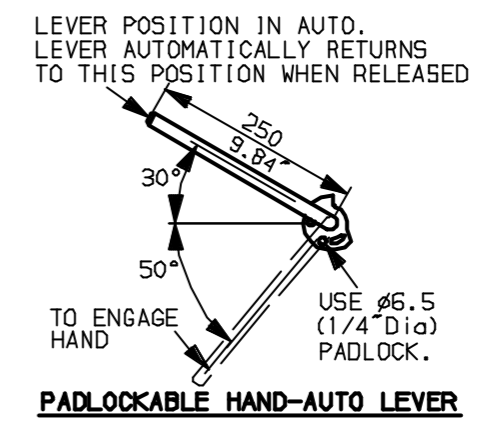
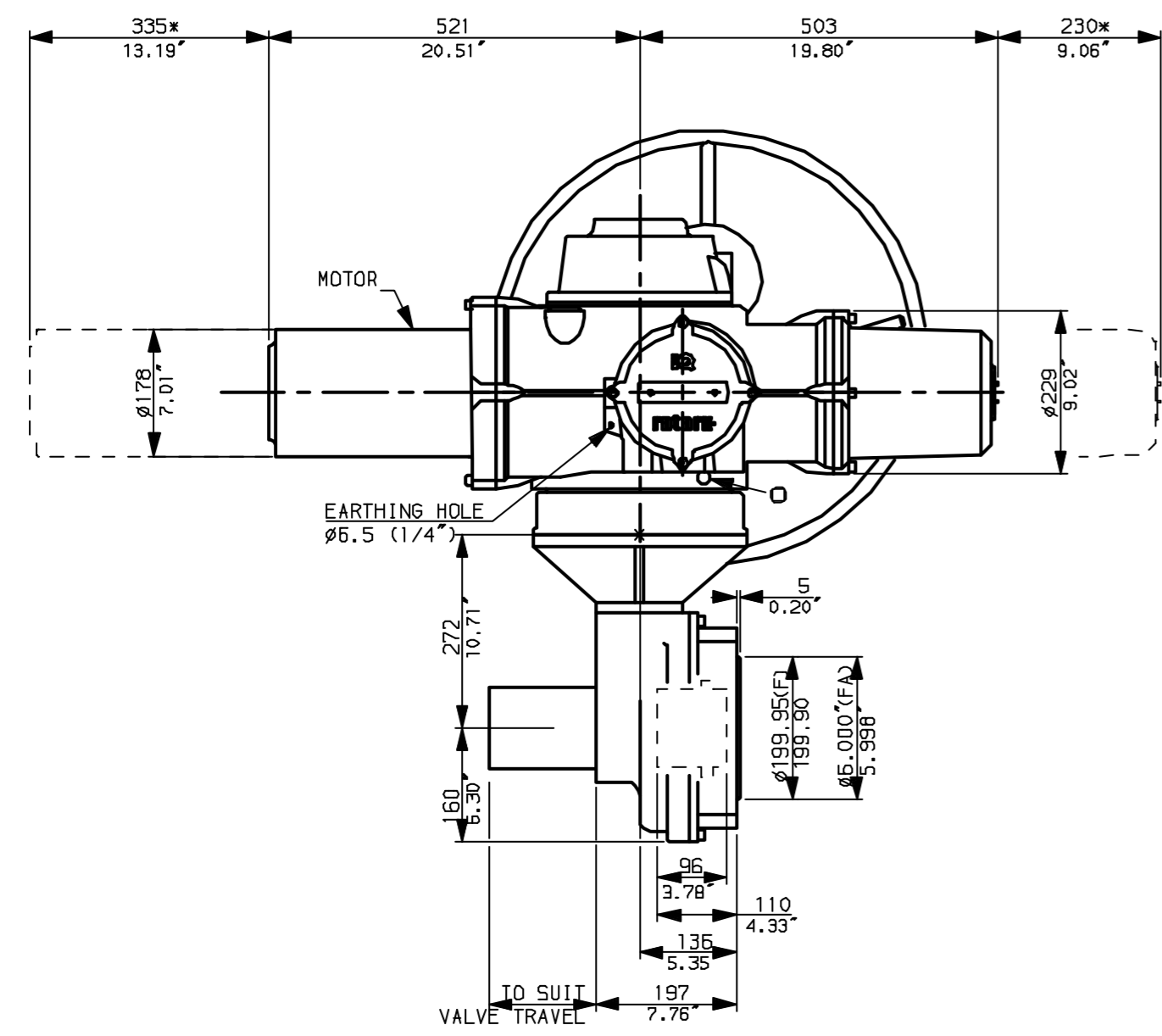
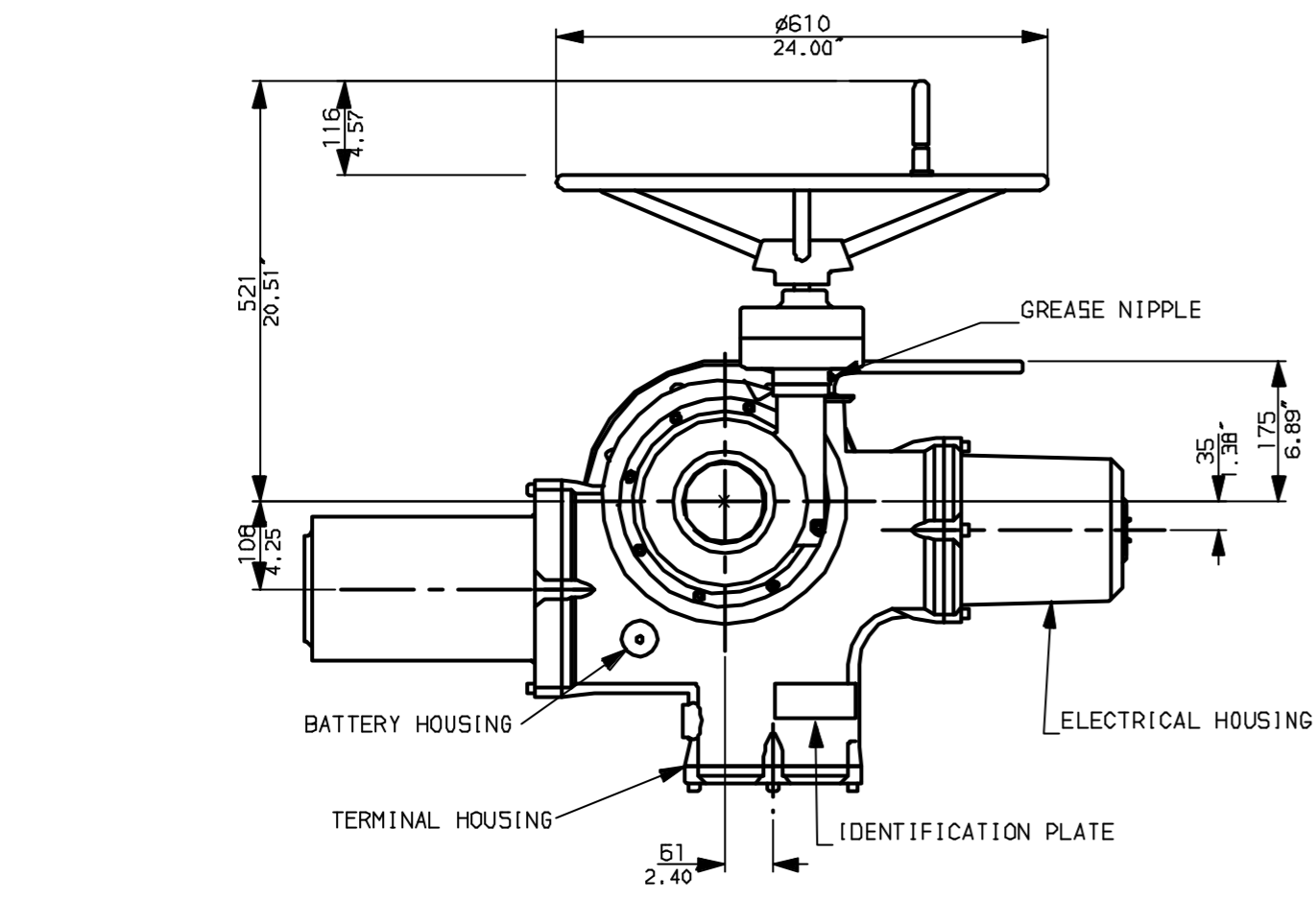
Rotork Controls Ltd.  
 Bath England, BA1 3JQ.  
 (Phone 01225-733200)  
 Rotork Controls Inc.  
 Rochester, NY 14624  
 (Phone 585-328-1550)

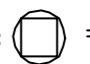
Title IQ70, 90, SHW, IB9,  
 STANDARD DIMENSIONAL DATA  
 Drawn CAD Checked PRE Ref Data Sheet  
 Date April 04 Job No IQ55HW\_IB9

01	First Issue.
Scale	1:9 THIRD ANGLE PROJECTION
Drawing Number	IQ55HW_IB9

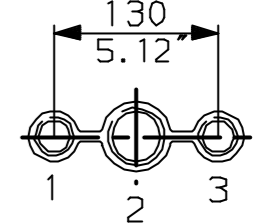
1 | 2 | 3 | 4 | 5 | 6 | 7 | 8 | 9 | 10

G  
F  
E  
D  
C  
B  
A

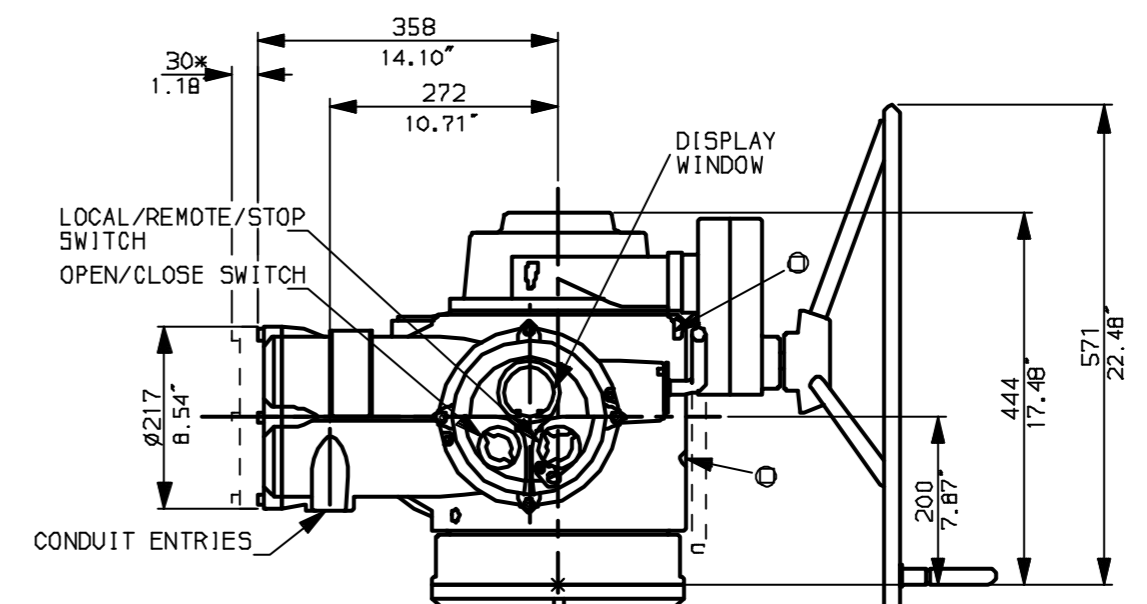


**NOTES:**  
 : DIMENSIONS WITH '\*' INDICATE COVER REMOVAL ALLOWANCE  
 : NETT WEIGHT = 285kg (627lbs)  
 :  = OIL FILLER/DRAIN PLUG  
 : THE INTERFACE PROVIDED FOR MOUNTING THE ACTUATOR OR SECOND STAGE GEARBOX ONTO THE VALVE SHOULD CONFORM TO GOOD ENGINEERING PRACTICES, ENSURING ADEQUATELY TOLERANCED LIMITS FOR PARALLELISM, PERPENDICULARITY AND CONCENTRICITY.

**CONDUIT ENTRIES (N.T.S)**



Nos.1 & 3 TAPPED 1" NPT  
 No.2 TAPPED 1 1/2" NPT  
 STD ALTERNATIVES IF SPECIFIED  
 2 X M25, 1 X M40  
 2 X PG16, 1 X PG29

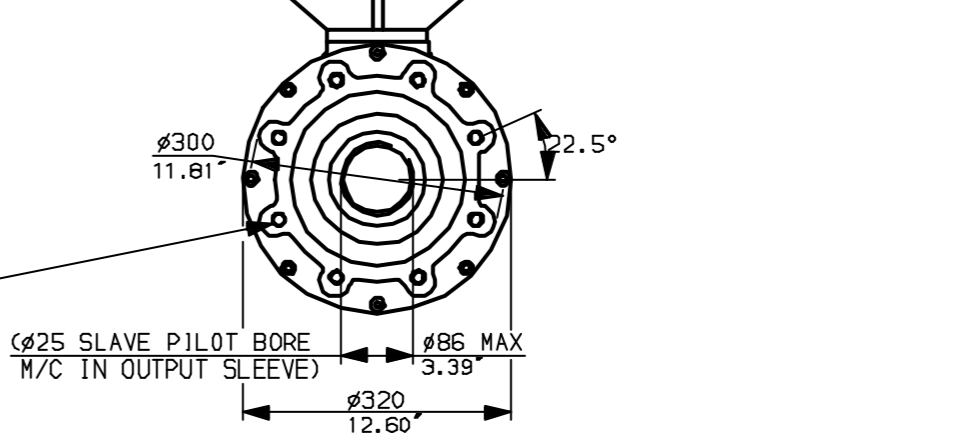


**"F" version**

8 HOLES TAPPED M16x20 DP  
 EQUI-SPACED ON A 254 PCD  
 (ISO5210 F25)

**"FA" version**

8 HOLES TAPPED 5/8" UNC  
 x0.8" dp EQUI-SPACED ON  
 10" PCD (M55 5P102-FA25).



Rotork Controls Ltd. Bath England, BA1 3JQ. (Phone 01225-733200)	Title IQ70, 90, SSHW, IB9, STANDARD DIMENSIONAL DATA
Rotork Controls Inc. Rochester, NY 14624 (Phone 585-328-1550)	Drawn CAD Checked PRE Ref Data Sheet
Date April 04 Job No IQ5SSHW_IB9	

01 Issue	First Issue.
Scale 1:9	THIRD ANGLE PROJECTION
Drawing Number	IQ5SSHW_IB9

1 | 2 | 3 | 4 | 5 | 6 | 7 | 8 | 9 | 10