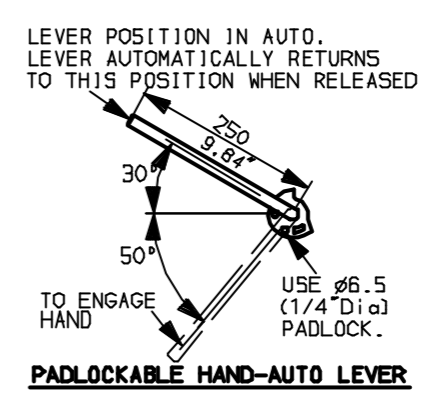
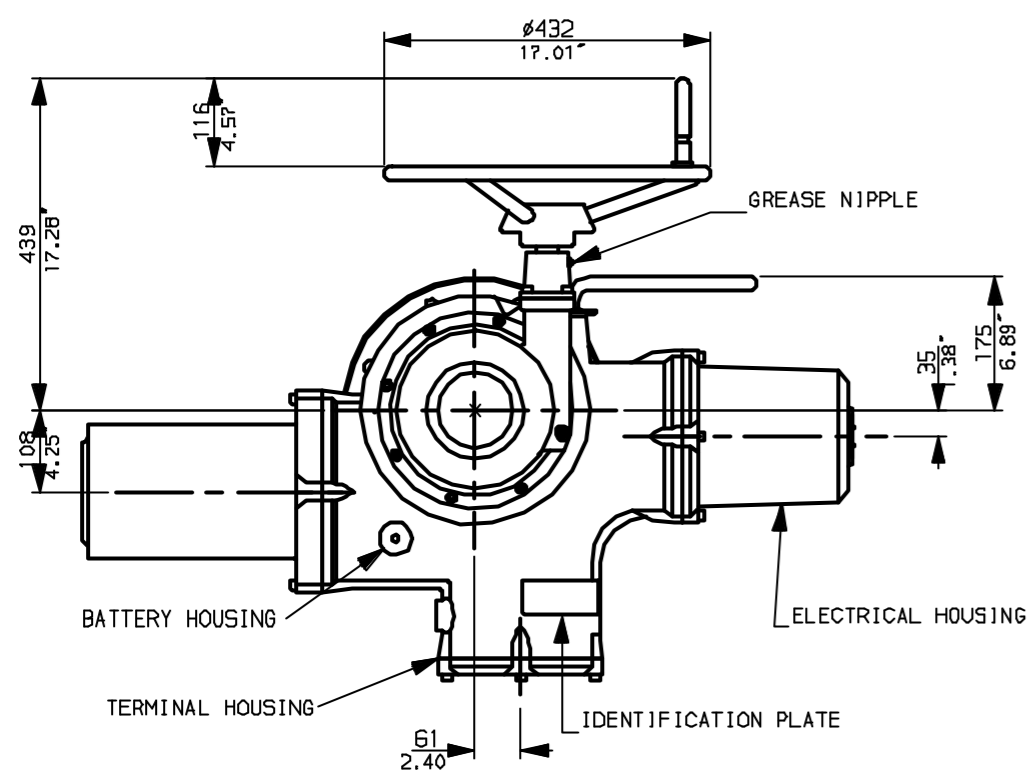
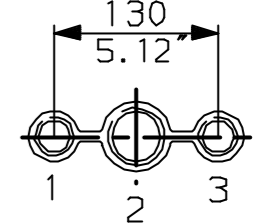


G
F
E
D
C
B
A

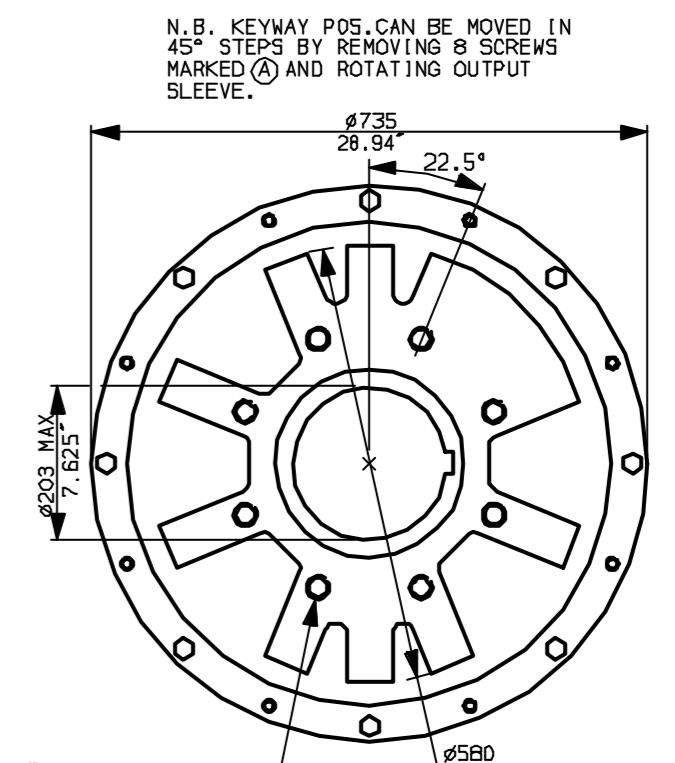
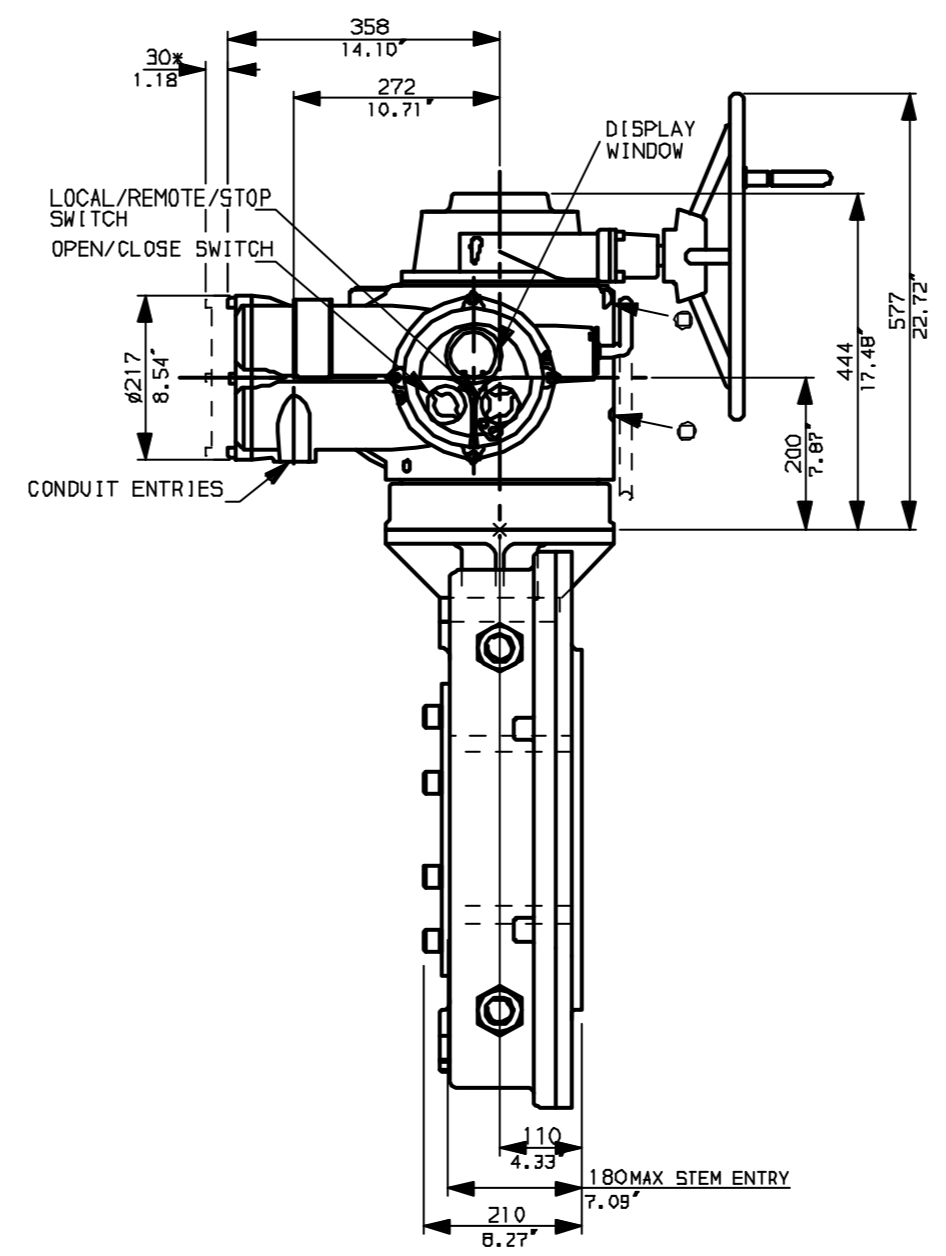
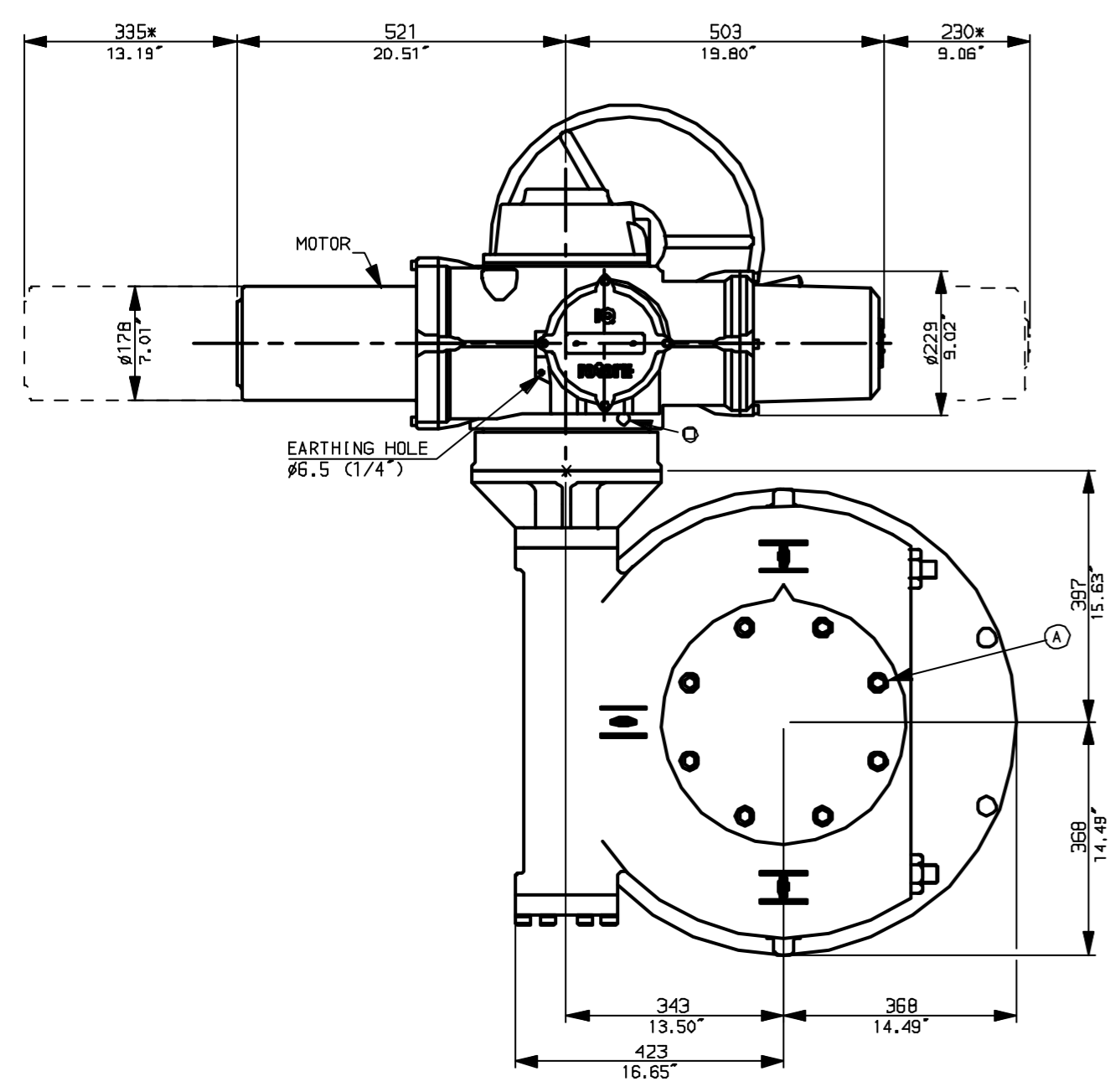


NOTES:
 * DIMENSIONS WITH '*' INDICATE COVER REMOVAL ALLOWANCE
 : NETT WEIGHT = 545kg (1199lbs)
 : \odot = OIL FILLER/DRAIN PLUG
 : THE INTERFACE PROVIDED FOR MOUNTING THE ACTUATOR OR SECOND STAGE GEARBOX ONTO THE VALVE SHOULD CONFORM TO GOOD ENGINEERING PRACTICES, ENSURING ADEQUATELY TOLERANCED LIMITS FOR PARALLELISM, PERPENDICULARITY AND CONCENTRICITY.

CONDUIT ENTRIES (N.T.S)



Nos.1 & 3 TAPPED 1" NPT
 No.2 TAPPED 1 1/2" NPT
 STD ALTERNATIVES IF SPECIFIED
 2 X M25, 1 X M40
 2 X PG16, 1 X PG29



N.B. KEYWAY POS. CAN BE MOVED IN 45° STEPS BY REMOVING 8 SCREWS MARKED (A) AND ROTATING OUTPUT SLEEVE.

"F" version
 8 HOLES TAPPED M30 x 36 DEEP, EQUI-SPACED OFF CENTRES ON A 356 P.C.D. (ISO 5211-F35).

"FA" version
 8 HOLES TAPPED 1"UNCx1.42"dp EQUI-SPACED OFF CENTRES ON A 14" PCD (MSS 5P101-FA35).

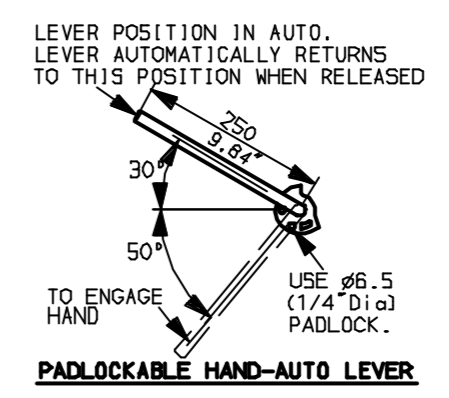
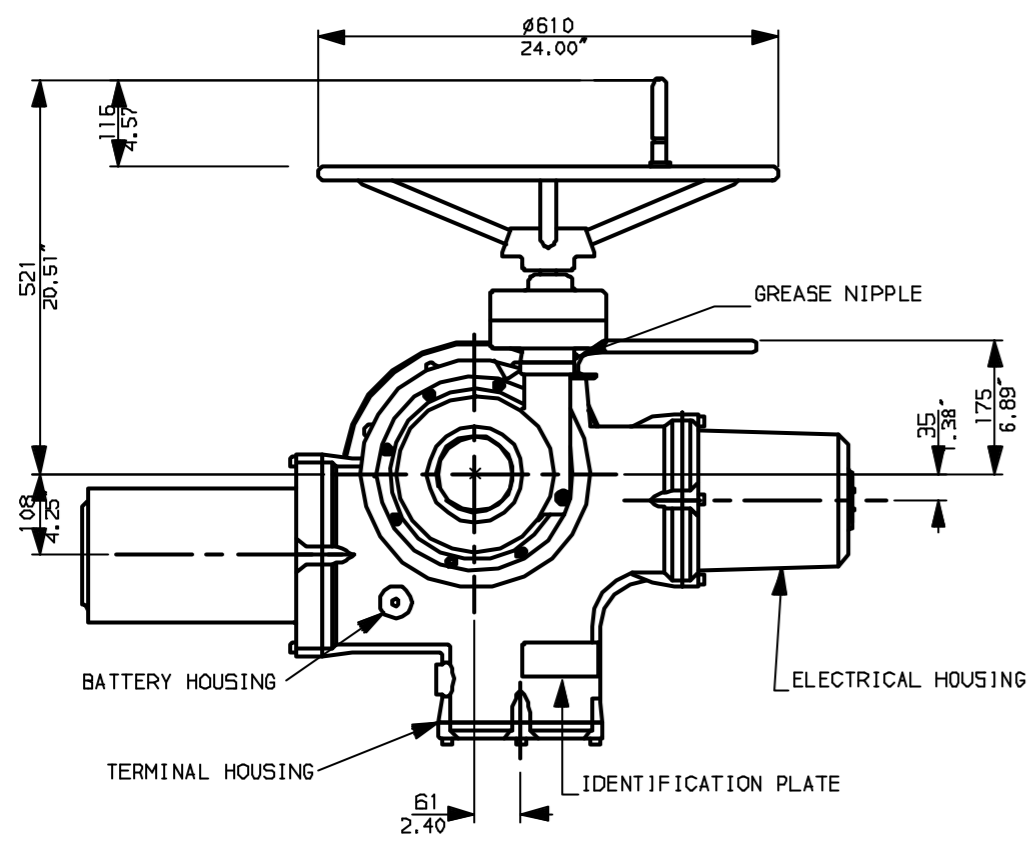


Rotork Controls Ltd. Bath England, BA1 3JQ. (Phone 01225-733200)	Title IQ70, 90, SHW, IW10, STANDARD DIMENSIONAL DATA
Rotork Controls Inc. Rochester, NY 14624 (Phone 585-328-1550)	Drawn CAD Checked PRE Ref Data Sheet
Date April 04 Job No IQ55HW_IW10	

01 Issue	First Issue.
Scale	1:10 THIRD ANGLE PROJECTION
Drawing Number	IQ55HW_IW10

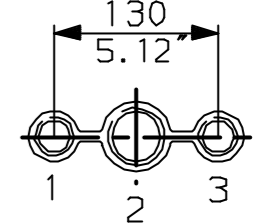
1 | 2 | 3 | 4 | 5 | 6 | 7 | 8 | 9 | 10

G
F
E
D
C
B
A

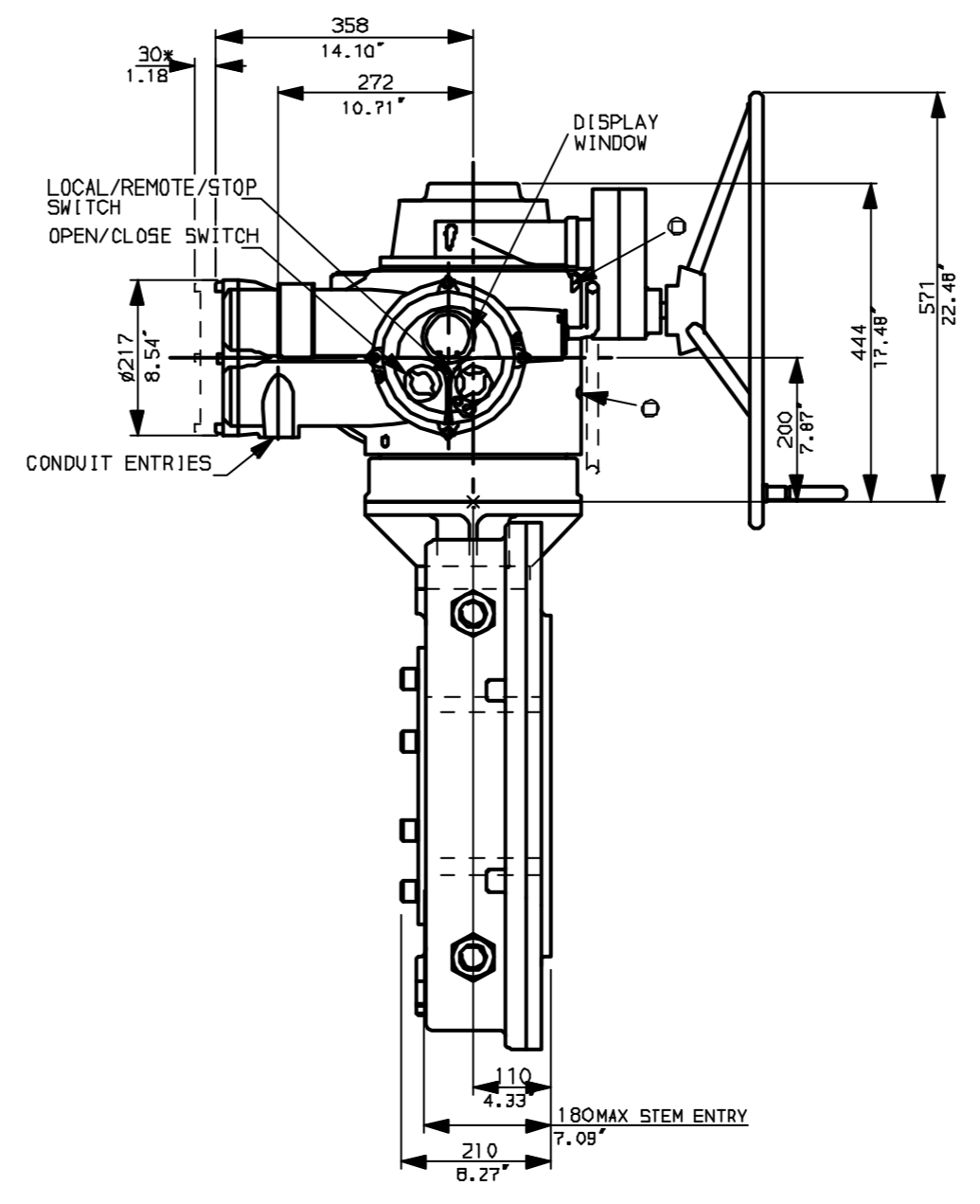
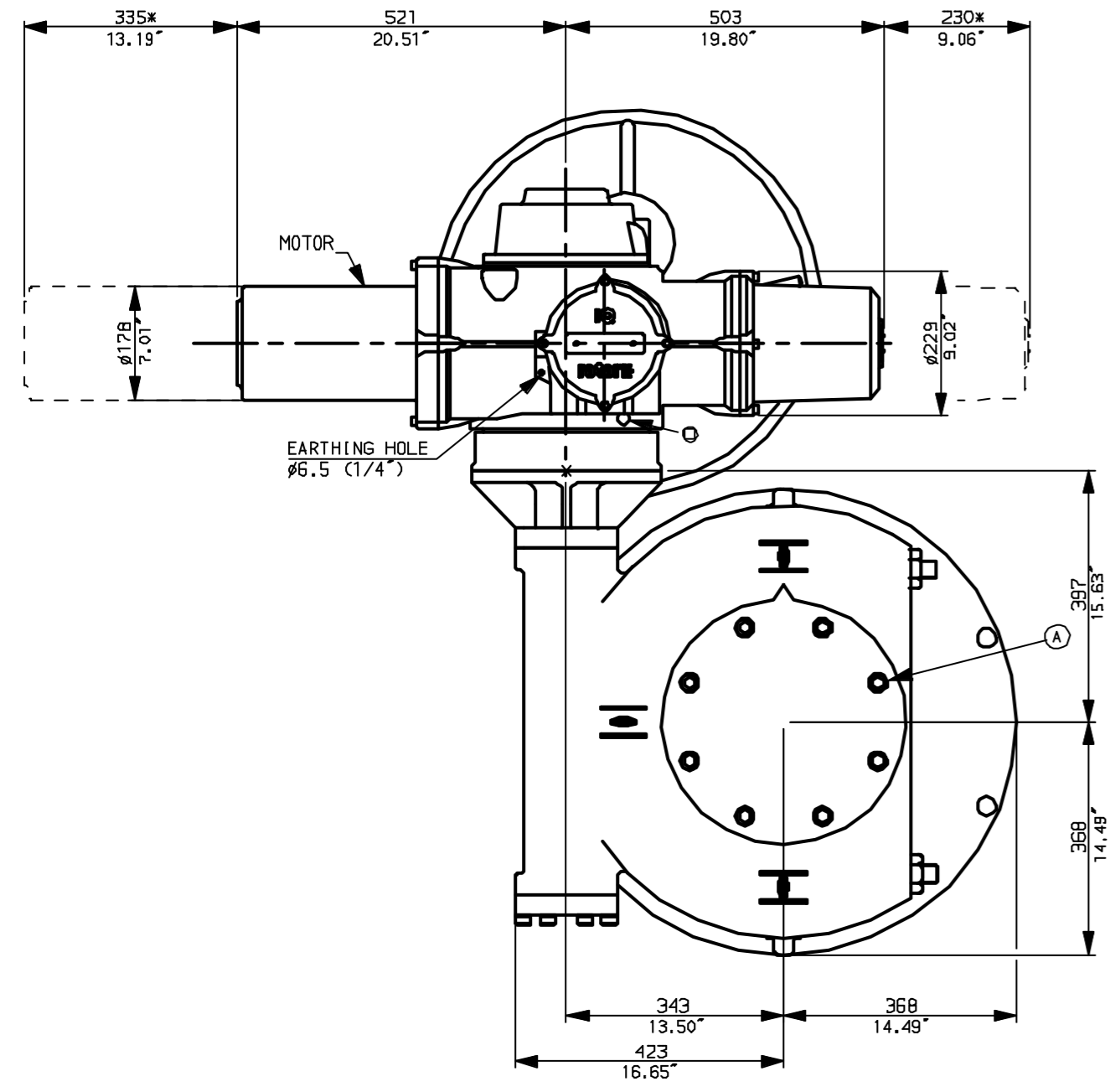


NOTES:
 * DIMENSIONS WITH '*' INDICATE COVER REMOVAL ALLOWANCE
 : NETT WEIGHT = 545kg (1199lbs)
 : \odot = OIL FILLER/DRAIN PLUG
 : THE INTERFACE PROVIDED FOR MOUNTING THE ACTUATOR OR SECOND STAGE GEARBOX ONTO THE VALVE SHOULD CONFORM TO GOOD ENGINEERING PRACTICES, ENSURING ADEQUATELY TOLERANCED LIMITS FOR PARALLELISM, PERPENDICULARITY AND CONCENTRICITY.

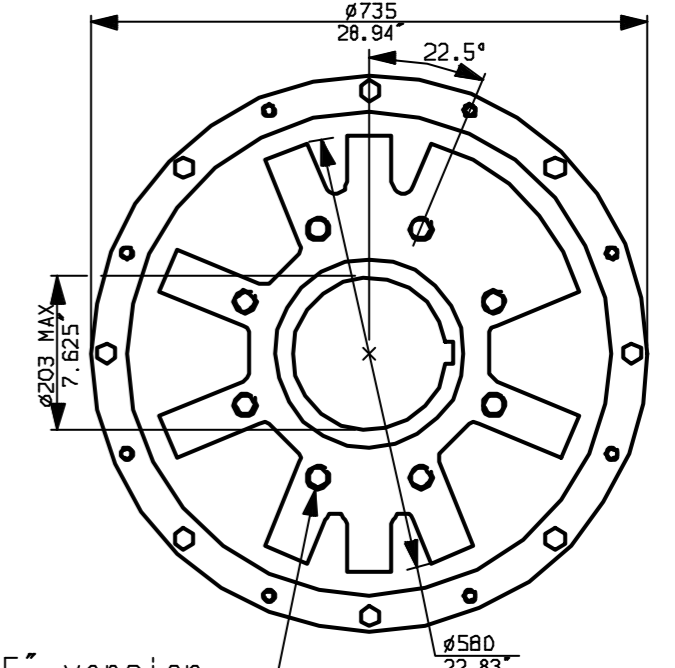
CONDUIT ENTRIES (N.T.S)



Nos.1 & 3 TAPPED 1" NPT
 No.2 TAPPED 1 1/2" NPT
 STD ALTERNATIVES IF SPECIFIED
 2 X M25, 1 X M40
 2 X PG16, 1 X PG29



N.B. KEYWAY POS. CAN BE MOVED IN 45° STEPS BY REMOVING 8 SCREWS MARKED (A) AND ROTATING OUTPUT SLEEVE.



"F" version

8 HOLES TAPPED M30 x 36 DEEP, EQUI-SPACED OFF CENTRES ON A 356 P.C.D. (150 5211-F35).

"FA" version

8 HOLES TAPPED 1" UNC x 1.42" dp, EQUI-SPACED OFF CENTRES ON A 14" PCD (MSS 5P101-FA35).



Rotork Controls Ltd. Bath England, BA1 3JQ. (Phone 01225-733200)	Title IQ70, 90, SSSH, IW10, STANDARD DIMENSIONAL DATA
Rotork Controls Inc. Rochester, NY 14624 (Phone 585-328-1550)	Drawn CAD Checked PRE Ref Data Sheet
Date April 04 Job No IQ5SSHW_IW10	

01 Issue	First Issue.
Scale	1:10 THIRD ANGLE PROJECTION
Drawing Number	IQ5SSHW_IW10

1 | 2 | 3 | 4 | 5 | 6 | 7 | 8 | 9 | 10