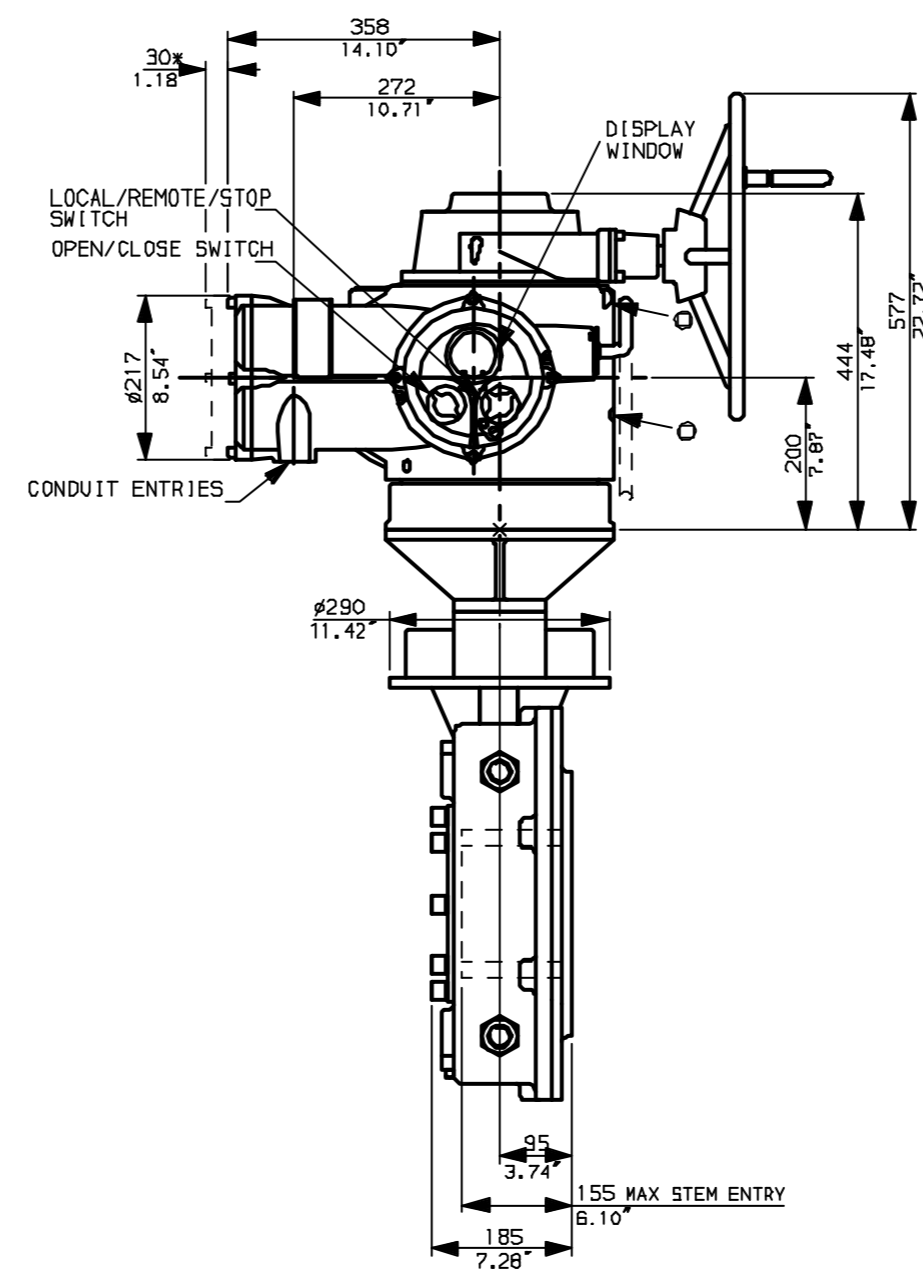
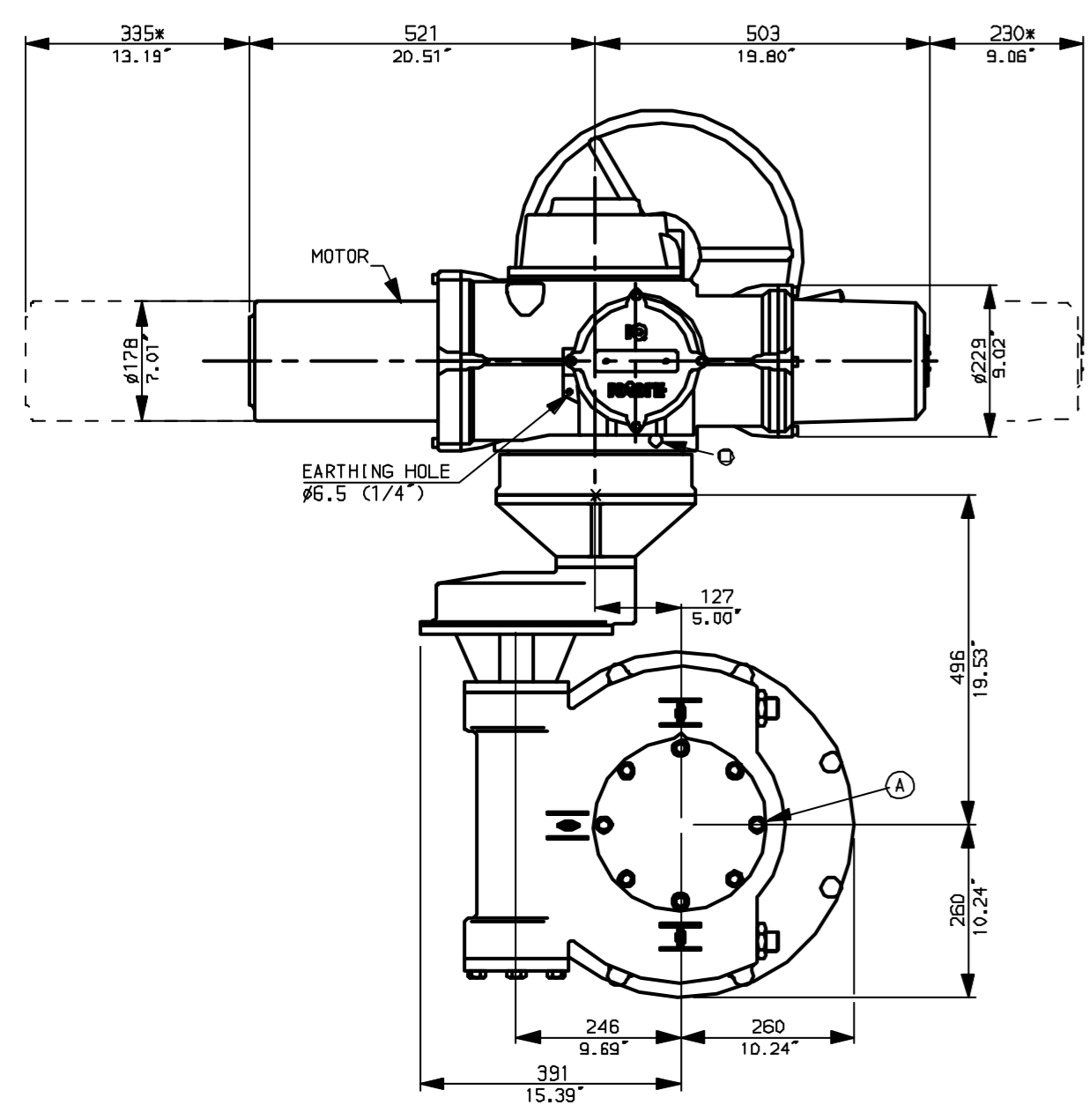
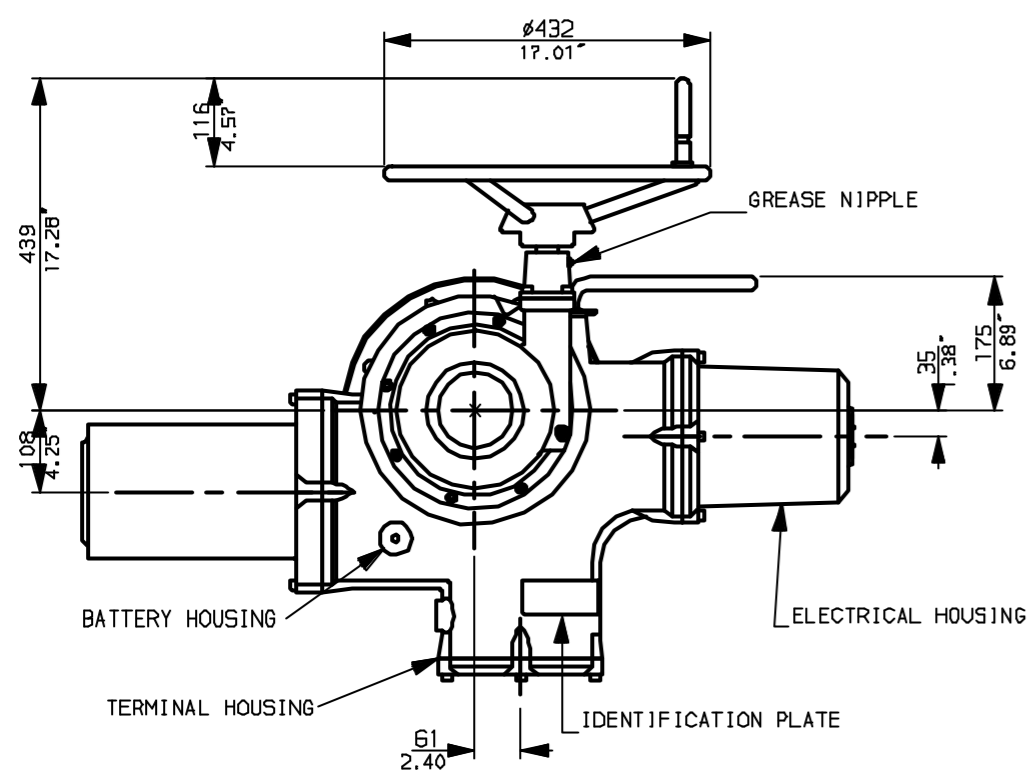
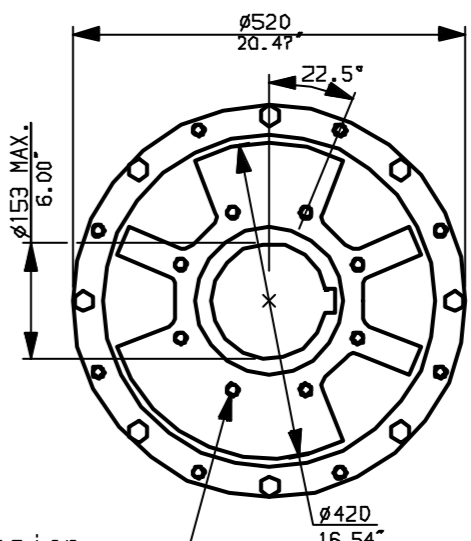


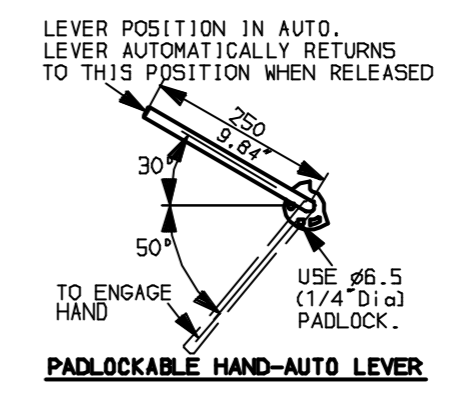
G
F
E
D
C
B
A



N.B. KEYWAY POS. CAN BE MOVED 90 OR 180° BY REMOVING 3 SCREWS MARKED (A) AND ROTATING OUTPUT SLEEVE.

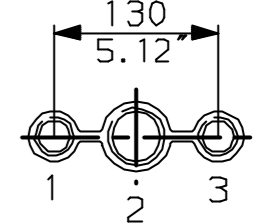


"FA" version
8 HOLES TAPPED 5/8" UNC x 1.18" dp
EQUI-SPACED AS SHOWN ON A
10" PCD (M55 SP101-FA25).



NOTES:
DIMENSIONS WITH '*' INDICATE
COVER REMOVAL ALLOWANCE
NETT WEIGHT = 427kg (939lbs)
OIL FILLER/DRAIN PLUG
THE INTERFACE PROVIDED FOR MOUNTING THE
ACTUATOR OR SECOND STAGE GEARBOX ONTO THE
VALVE SHOULD CONFORM TO GOOD ENGINEERING
PRACTICES, ENSURING ADEQUATELY TOLERANCED
LIMITS FOR PARALLELISM, PERPENDICULARITY
AND CONCENTRICITY.

CONDUIT ENTRIES (N.T.S)



Nos.1 & 3 TAPPED 1" NPT
No.2 TAPPED 1 1/2" NPT
STD ALTERNATIVES IF SPECIFIED
2 X M25, 1 X M40
2 X PG16, 1 X PG29

NOTE:
Gearbox is shown with LOW Ratio Input Reducer.
(ie Ratios 120,180,240,360)
See Data Sheet with IWRh for HIGH ratio option.



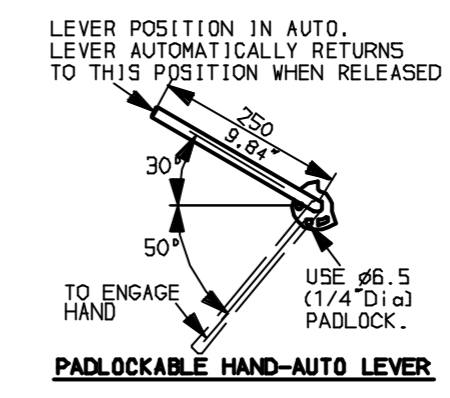
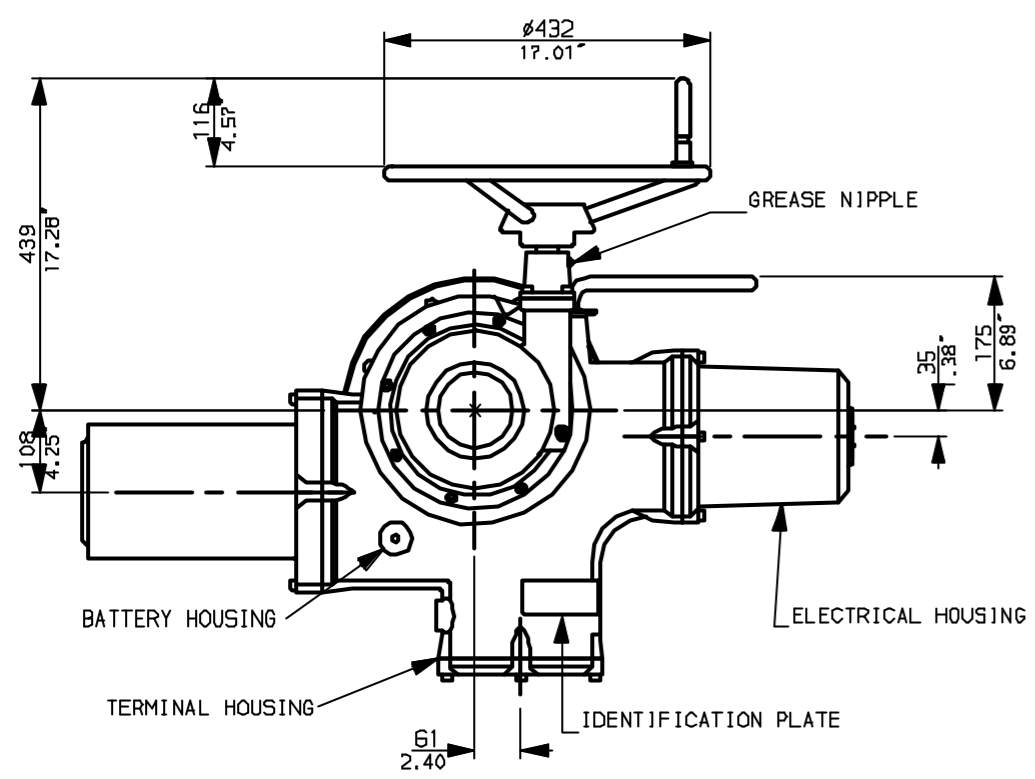
Rotork Controls Ltd.
Bath England, BA1 3JQ.
(Phone 01225-733200)
Rotork Controls Inc.
Rochester, NY 14624
(Phone 585-328-1550)

Title IQ70, 90, SHW, IWB (+82+85) RL,		
STANDARD DIMENSIONAL DATA		
Drawn CAD	Checked PRE	Ref Data Sheet
Date April 04	Job No	IQ55HW_IWBRL

01	First Issue.
Scale	1:10 THIRD ANGLE PROJECTION
Drawing Number	IQ55HW_IWBRL

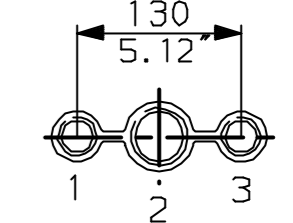
1 | 2 | 3 | 4 | 5 | 6 | 7 | 8 | 9 | 10

G
F
E
D
C
B
A

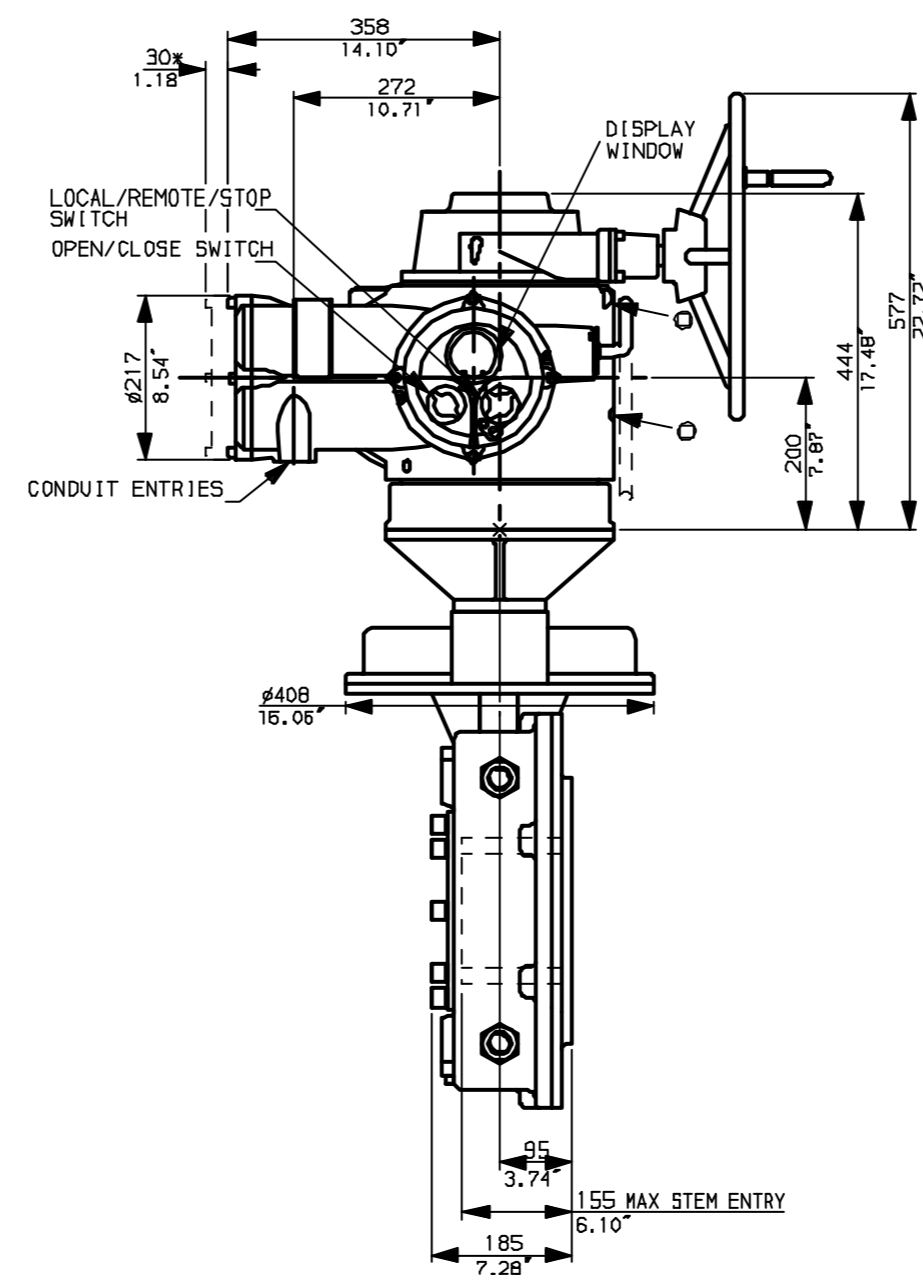
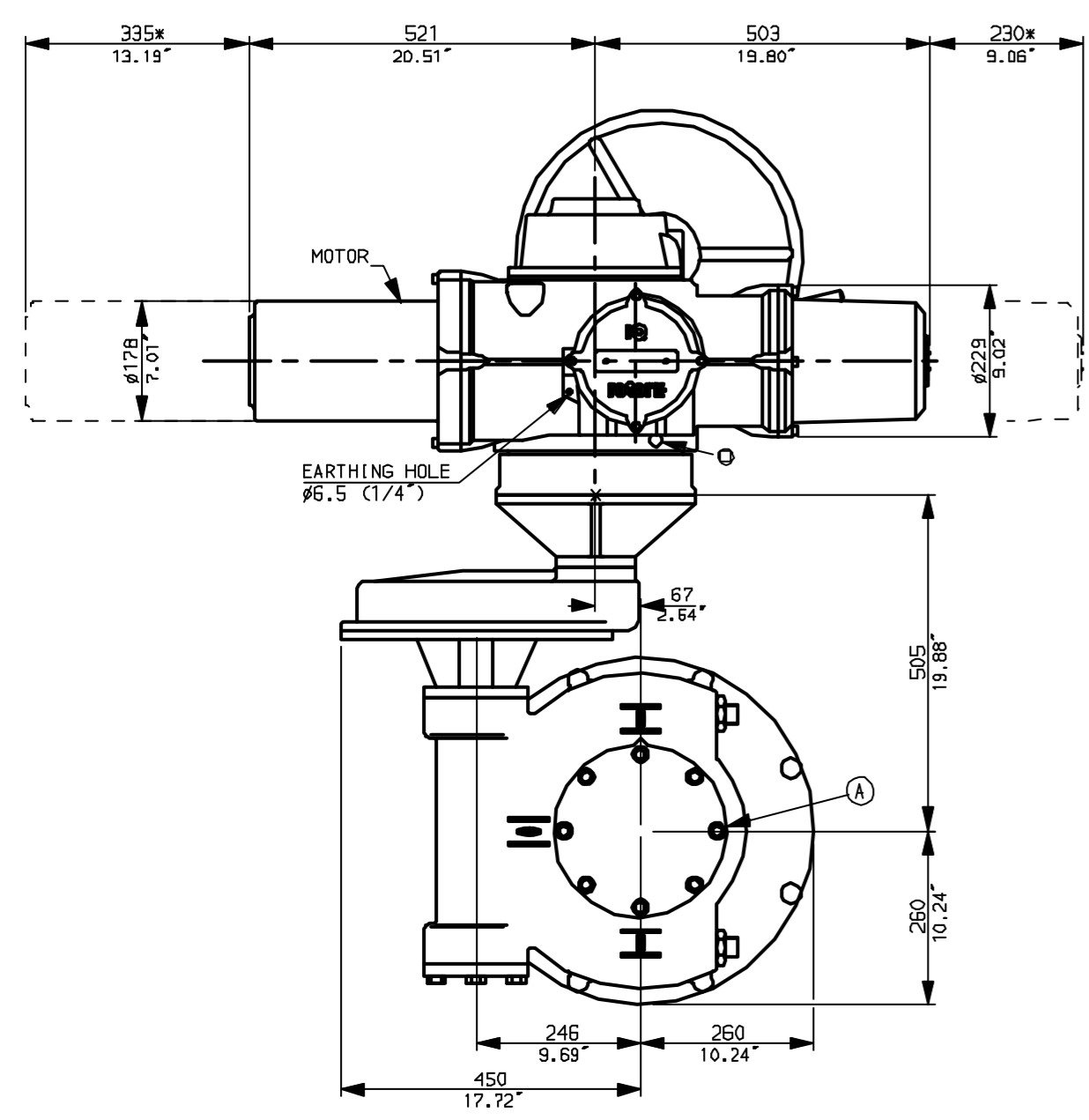


NOTES:
 * DIMENSIONS WITH '*' INDICATE COVER REMOVAL ALLOWANCE
 NETT WEIGHT = 437kg (961 lbs)
 ○ = OIL FILLER/DRAIN PLUG
 THE INTERFACE PROVIDED FOR MOUNTING THE ACTUATOR OR SECOND STAGE GEARBOX ONTO THE VALVE SHOULD CONFORM TO GOOD ENGINEERING PRACTICES, ENSURING ADEQUATELY TOLERANCED LIMITS FOR PARALLELISM, PERPENDICULARITY AND CONCENTRICITY.

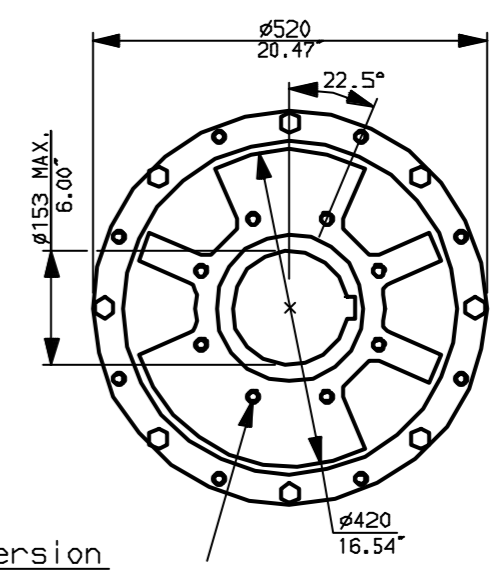
CONDUIT ENTRIES (N.T.S)



Nos.1 & 3 TAPPED 1" NPT
 No.2 TAPPED 1 1/2" NPT
 STD ALTERNATIVES IF SPECIFIED
 2 X M25, 1 X M40
 2 X PG16, 1 X PG29



N.B. KEYWAY POS. CAN BE MOVED 90 OR 180° BY REMOVING 8 SCREWS MARKED (A) AND ROTATING OUTPUT SLEEVE.



"F" version
 8 HOLES TAPPED M16 x 30 DP
 EQUI-SPACED AS SHOWN ON A
 254 PCD (150 5211-F25).

"FA" version
 8 HOLES TAPPED 5/8" UNC x 1.18" dp
 EQUI-SPACED AS SHOWN ON A
 10" PCD (M55 5P101-FA25).



Rotork Controls Ltd.
 Bath England, BA1 3JQ.
 (Phone 01225-733200)
 Rotork Controls Inc.
 Rochester, NY 14624
 (Phone 585-328-1550)

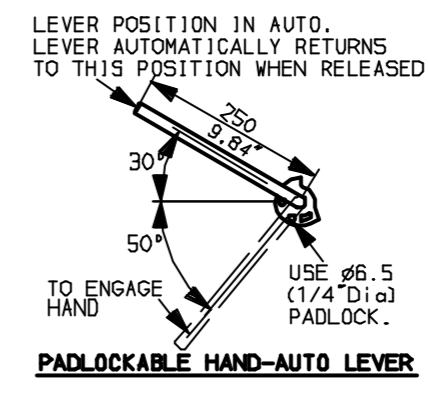
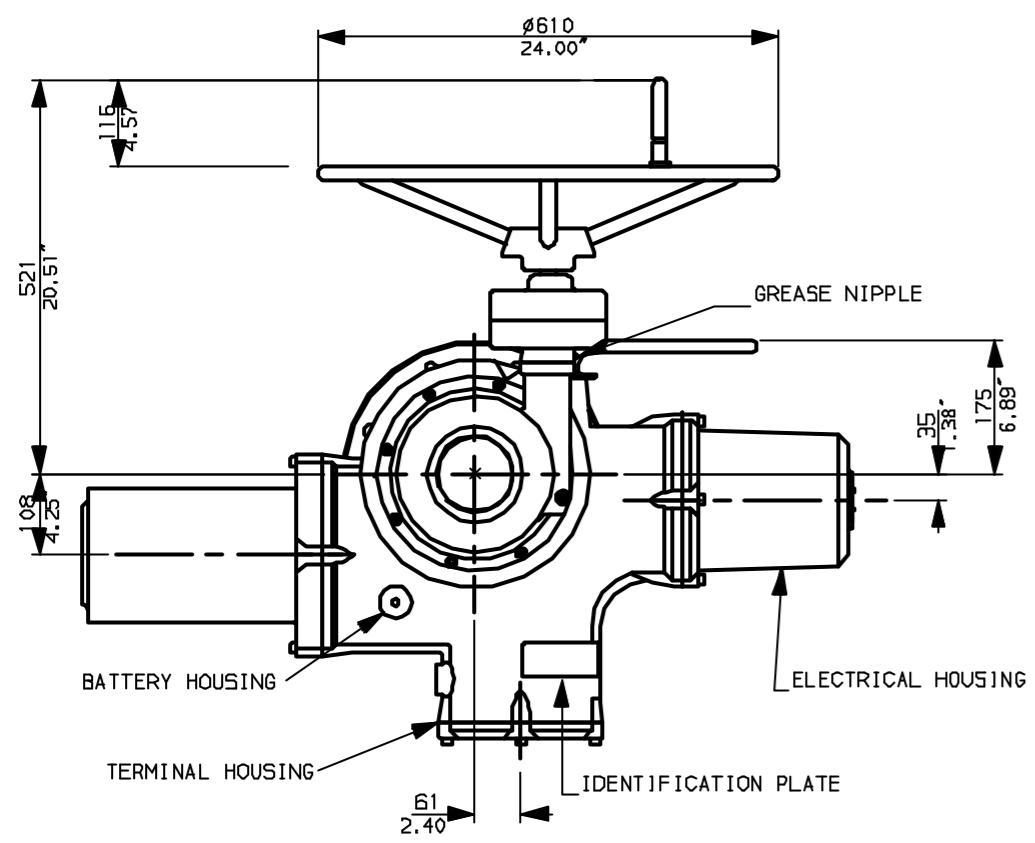
Title IQ70, 90, SHW, IW8 (+82+85)Rh,		
STANDARD DIMENSIONAL DATA		
Drawn CAD	Checked PRE	Ref Data Sheet
Date April 04	Job No	IQ55HW_IW8Rh

NOTE:
 Gearbox is shown with HIGH Ratio Input Reducer.
 (ie Ratios 480, 540, 720)
 See Data Sheet with IW8RL for LOW ratio option.

01	First Issue.
Scale	1:10 THIRD ANGLE PROJECTION
Drawing Number	IQ55HW_IW8Rh

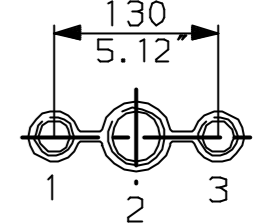
1 | 2 | 3 | 4 | 5 | 6 | 7 | 8 | 9 | 10

G
F
E
D
C
B
A

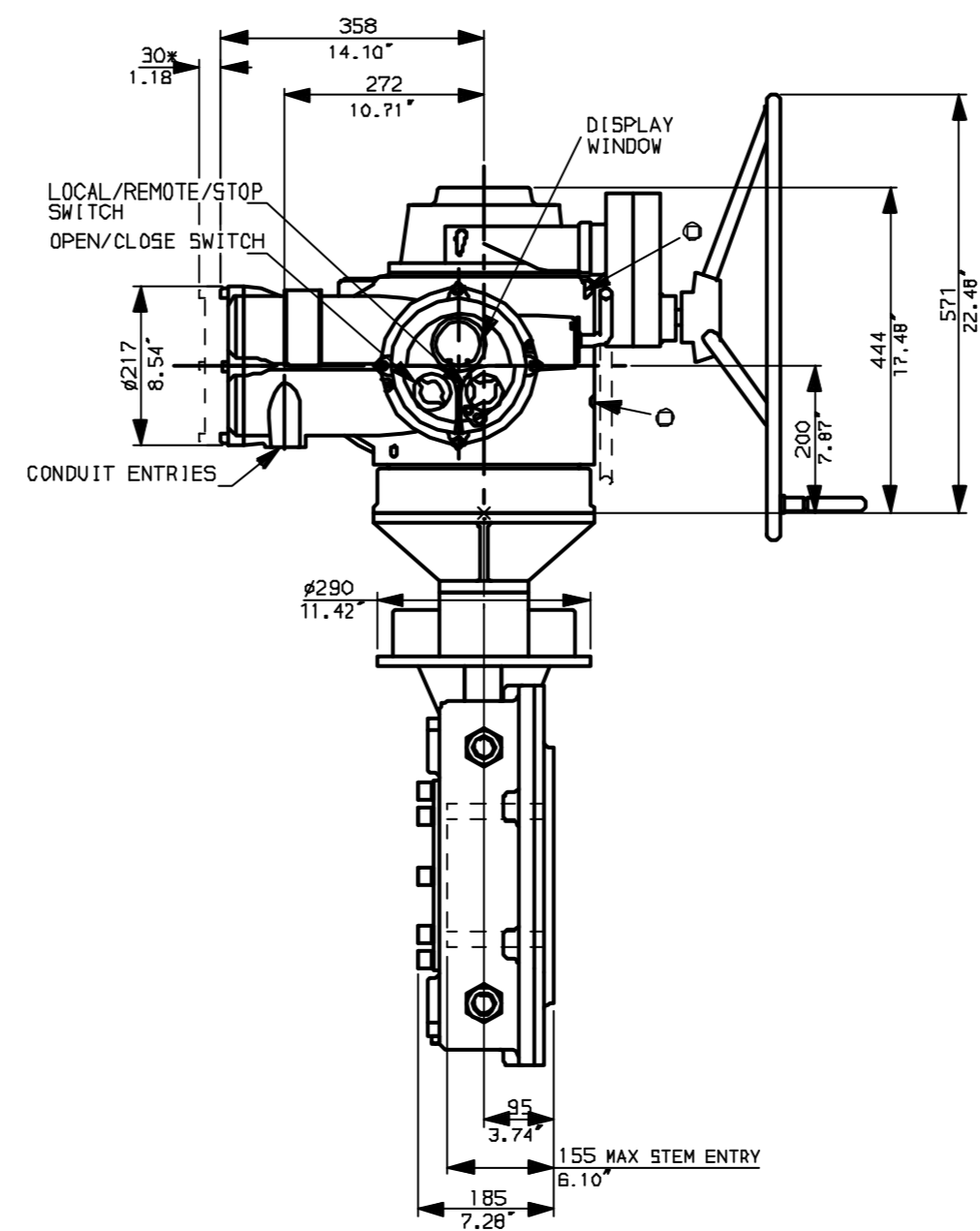
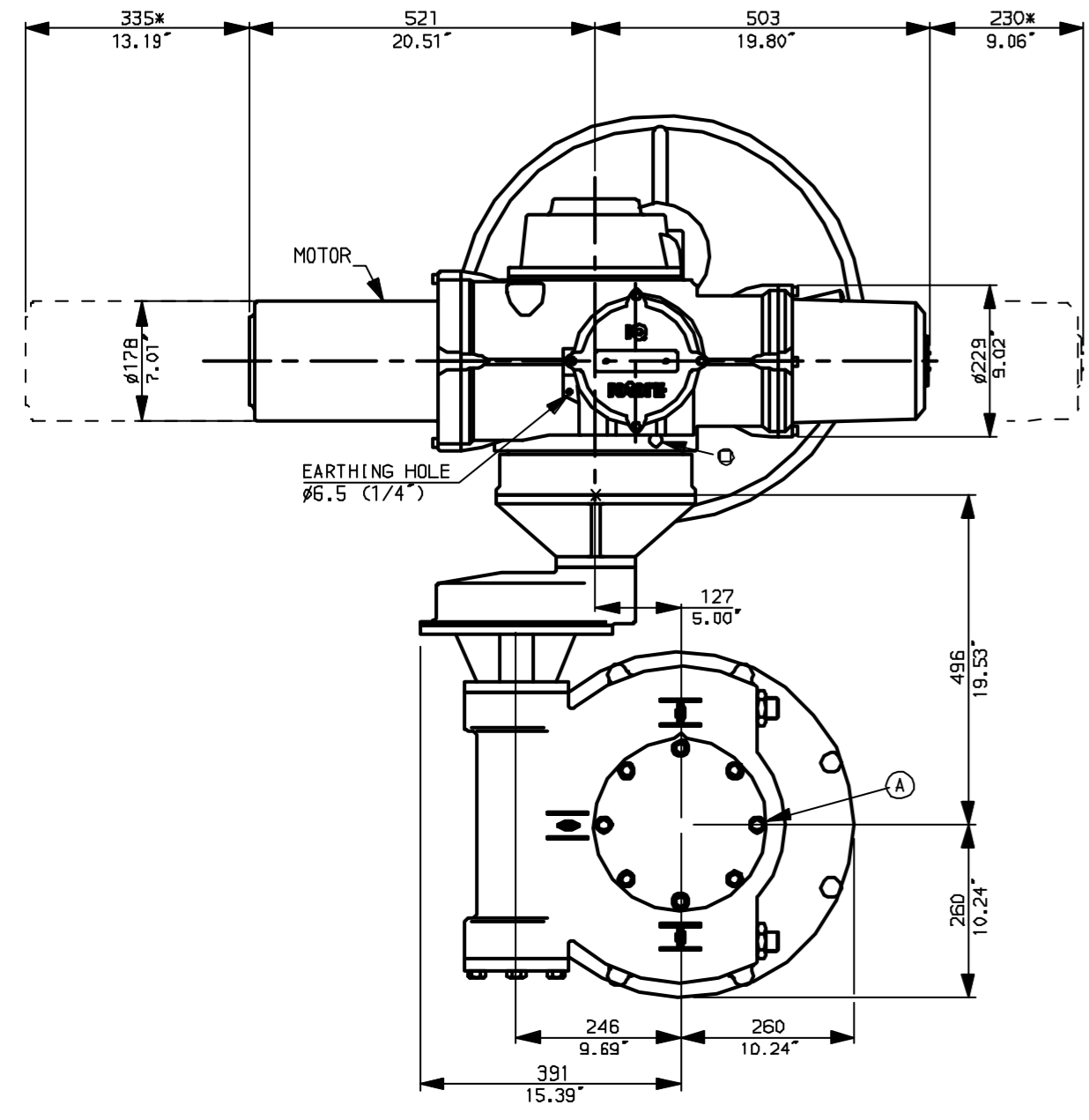


NOTES:
 * DIMENSIONS WITH '*' INDICATE COVER REMOVAL ALLOWANCE
 : NETT WEIGHT = 427kg (939lbs)
 : \odot = OIL FILLER/DRAIN PLUG
 : THE INTERFACE PROVIDED FOR MOUNTING THE ACTUATOR OR SECOND STAGE GEARBOX ONTO THE VALVE SHOULD CONFORM TO GOOD ENGINEERING PRACTICES, ENSURING ADEQUATELY TOLERANCED LIMITS FOR PARALLELISM, PERPENDICULARITY AND CONCENTRICITY.

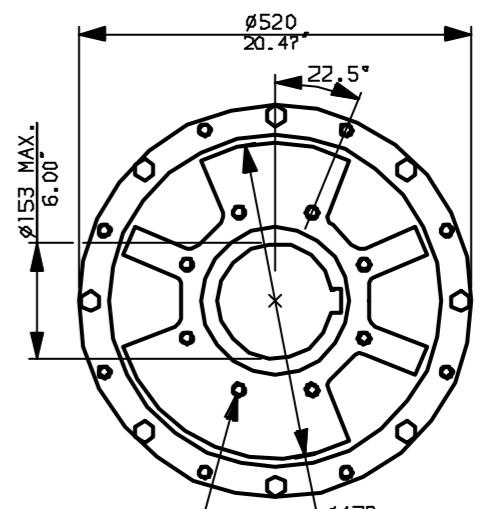
CONDUIT ENTRIES (N.T.S)



Nos.1 & 3 TAPPED 1" NPT
 No.2 TAPPED 1 1/2" NPT
 STD ALTERNATIVES IF SPECIFIED
 2 X M25, 1 X M40
 2 X PG16, 1 X PG29



N.B. KEYWAY POS. CAN BE MOVED 90 OR 180° BY REMOVING 8 SCREWS MARKED (A) AND ROTATING OUTPUT SLEEVE.



"F" version
 8 HOLES TAPPED M16 x 30 DP
 EQUI-SPACED AS SHOWN ON A
 254 PCD (ISO 5211-F25).

"FA" version
 8 HOLES TAPPED 5/8" UNC x 1.18" dp
 EQUI-SPACED AS SHOWN ON A
 10" PCD (MSS SP101-FA25).

NOTE:
 Gearbox is shown with LOW Ratio Input Reducer.
 (ie Ratios 120,180,240,360)
 See Data Sheet with IWRh for HIGH ratio option.

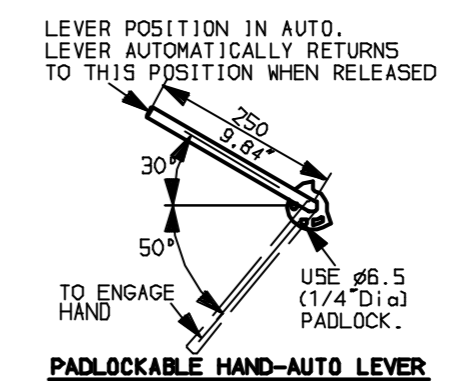
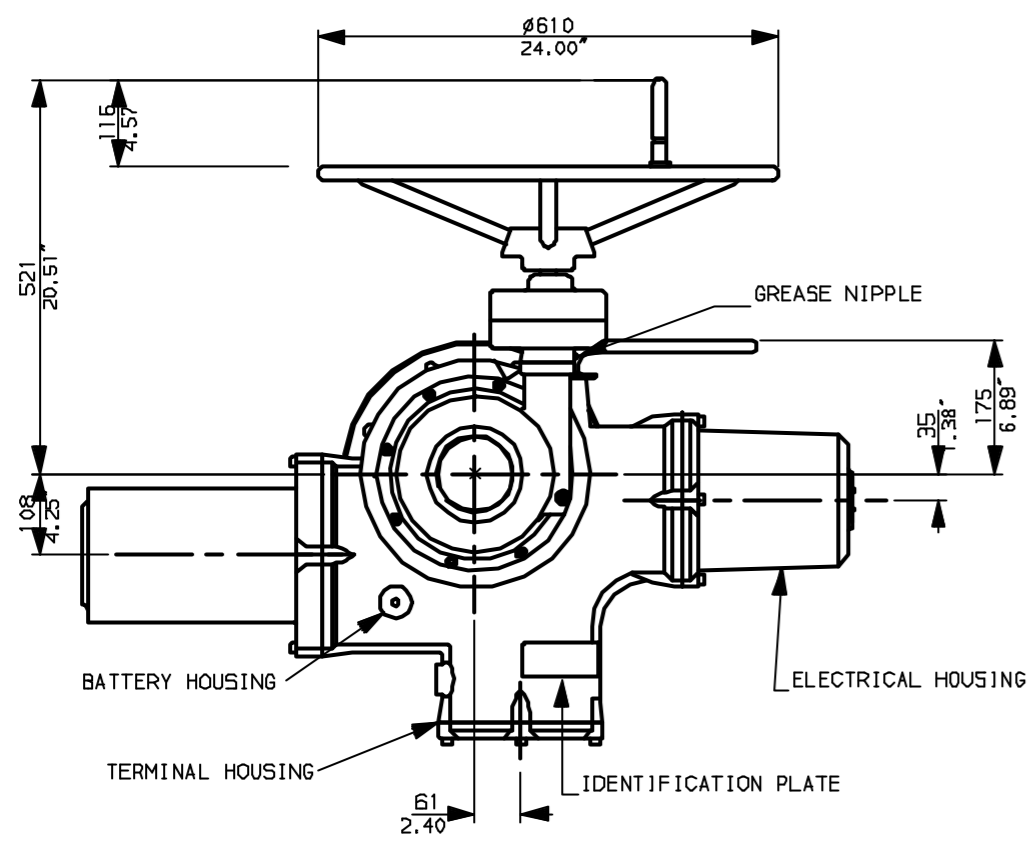


Rotork Controls Ltd. Bath England, BA1 3JQ. (Phone 01225-733200)	Title IQ70, 90, SSHW, IWB (+82+85) RL, STANDARD DIMENSIONAL DATA
Rotork Controls Inc. Rochester, NY 14624 (Phone 585-328-1550)	Drawn CAD Checked PRE Ref Data Sheet
Date April 04 Job No IQ5SSHW_IWBR	

01 Issue	First Issue.
Scale	1:10 THIRD ANGLE PROJECTION
Drawing Number	I IQ5SSHW_IWBR L

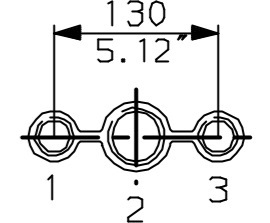
1 | 2 | 3 | 4 | 5 | 6 | 7 | 8 | 9 | 10

G
F
E
D
C
B
A

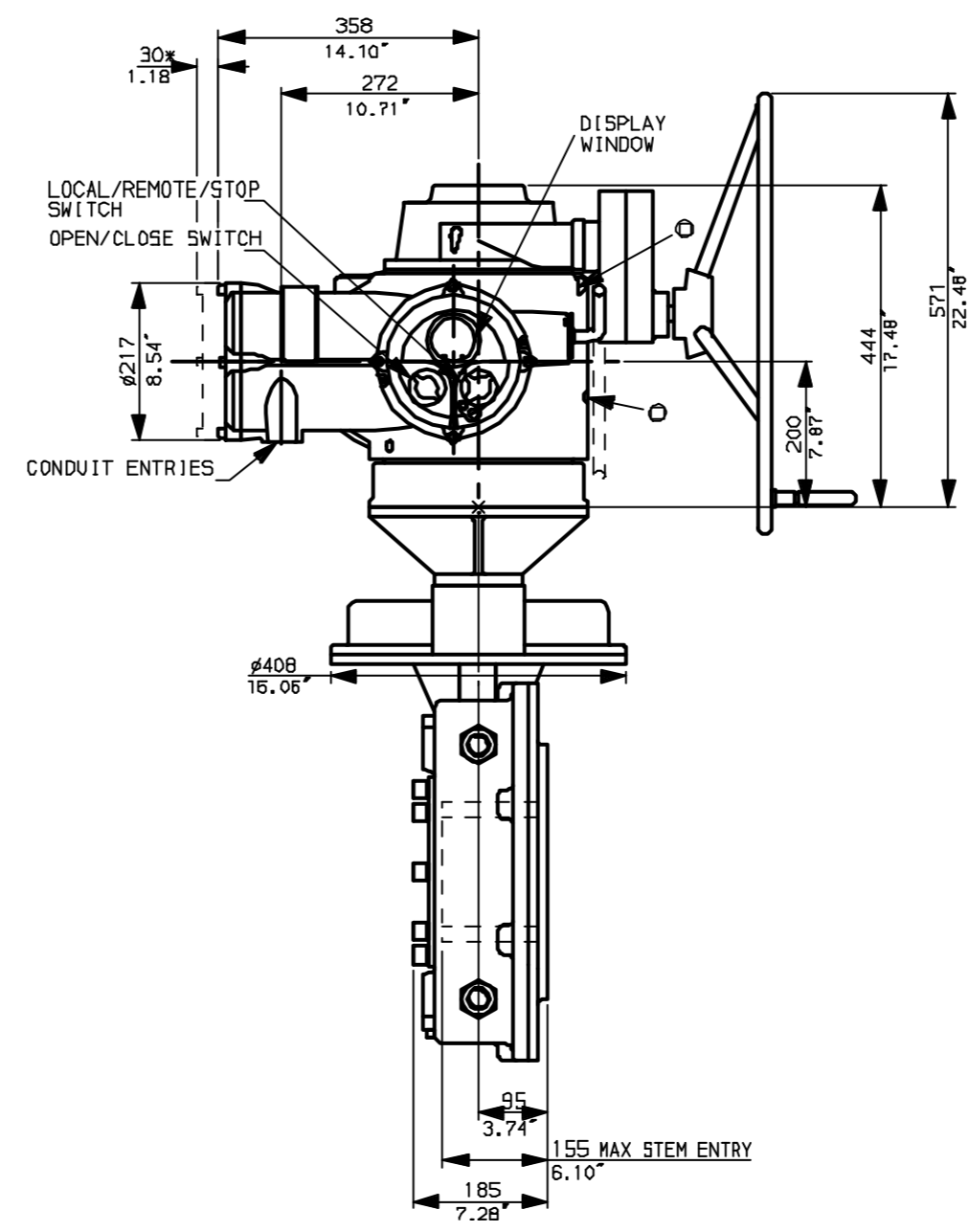
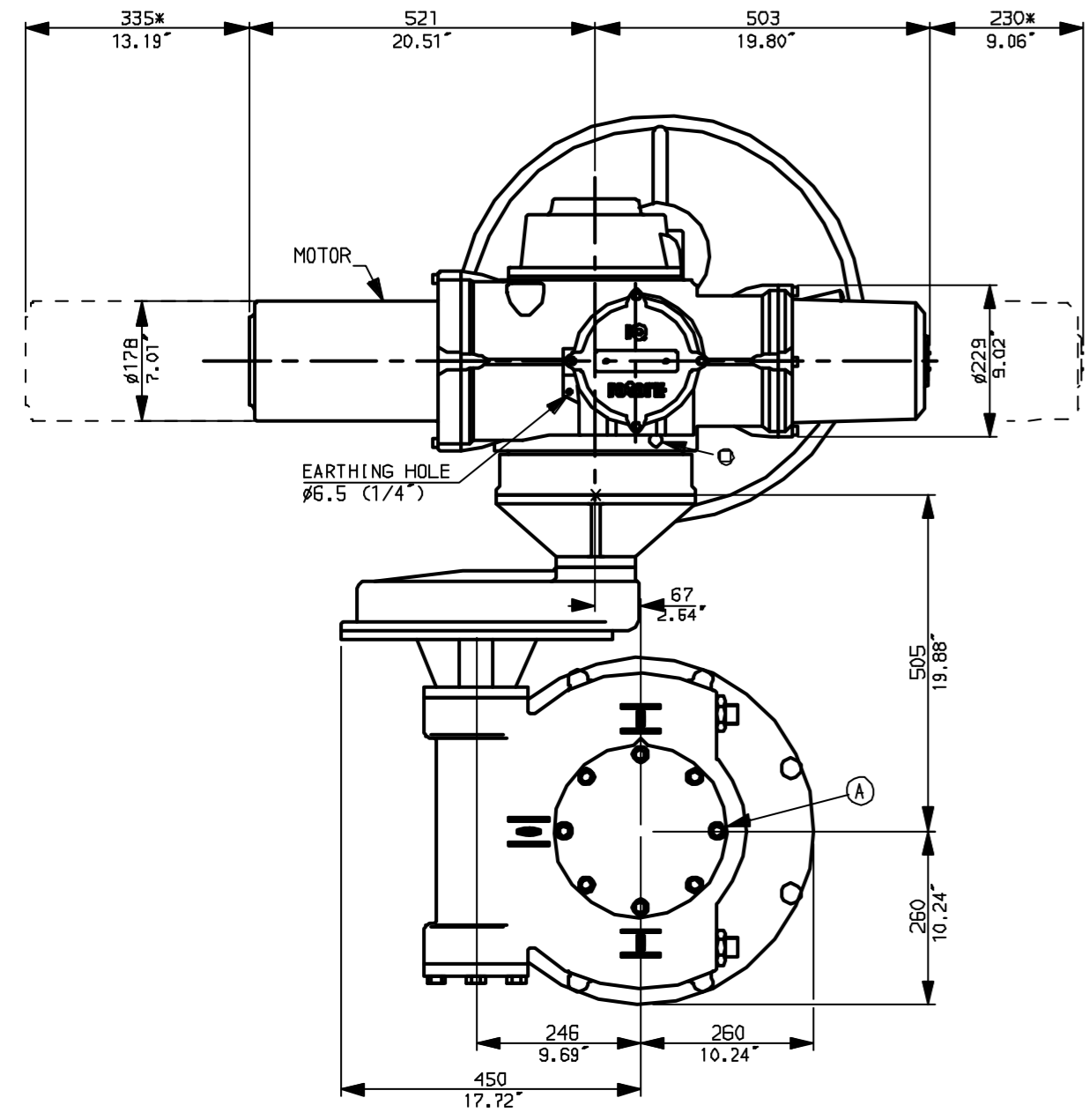


NOTES:
 * DIMENSIONS WITH '*' INDICATE COVER REMOVAL ALLOWANCE
 : NETT WEIGHT = 437kg (961 lbs)
 : \odot = OIL FILLER/DRAIN PLUG
 : THE INTERFACE PROVIDED FOR MOUNTING THE ACTUATOR OR SECOND STAGE GEARBOX ONTO THE VALVE SHOULD CONFORM TO GOOD ENGINEERING PRACTICES, ENSURING ADEQUATELY TOLERANCED LIMITS FOR PARALLELISM, PERPENDICULARITY AND CONCENTRICITY.

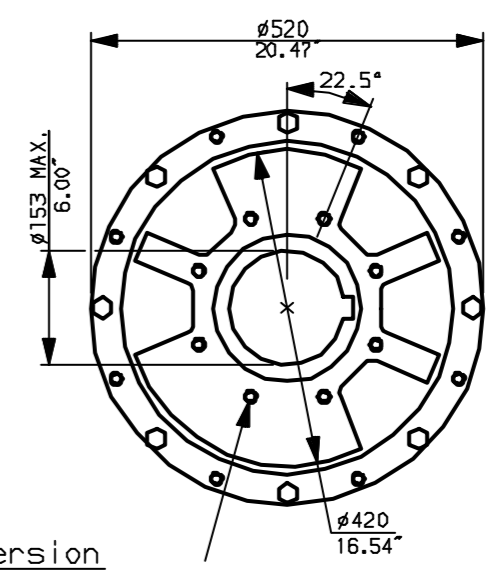
CONDUIT ENTRIES (N.T.S)



Nos.1 & 3 TAPPED 1" NPT
 No.2 TAPPED 1 1/2" NPT
 STD ALTERNATIVES IF SPECIFIED
 2 X M25, 1 X M40
 2 X PG16, 1 X PG29



N.B. KEYWAY POS. CAN BE MOVED 90 OR 180° BY REMOVING 8 SCREWS MARKED (A) AND ROTATING OUTPUT SLEEVE.



"F" version
 8 HOLES TAPPED M16 x 30 DP
 EQUI-SPACED AS SHOWN ON A
 254 PCD (ISO 5211-F25).

"FA" version
 8 HOLES TAPPED 5/8"UNCx1.18"dp
 EQUI-SPACED AS SHOWN ON A
 10" PCD (MSS 5P101-FA25).

NOTE:
 Gearbox is shown with HIGH Ratio Input Reducer.
 (ie Ratios 480,540,720)
 See Data Sheet with IW8RL for LOW ratio option.



Rotork Controls Ltd. Bath England, BA1 3JQ. (Phone 01225-733200)	Title IQ70, 90, SSHW, IW8 (+82+85) Rh,
Rotork Controls Inc. Rochester, NY 14624 (Phone 585-328-1550)	STANDARD DIMENSIONAL DATA
Drawn CAD	Checked PRE
Ref Data Sheet	
Date April 04	Job No IQ5SSHW_IW8Rh

01 Issue	First Issue.
Scale	1:10 THIRD ANGLE PROJECTION
Drawing Number	IQ5SSHW_IW8Rh

1 | 2 | 3 | 4 | 5 | 6 | 7 | 8 | 9 | 10