

8000B886

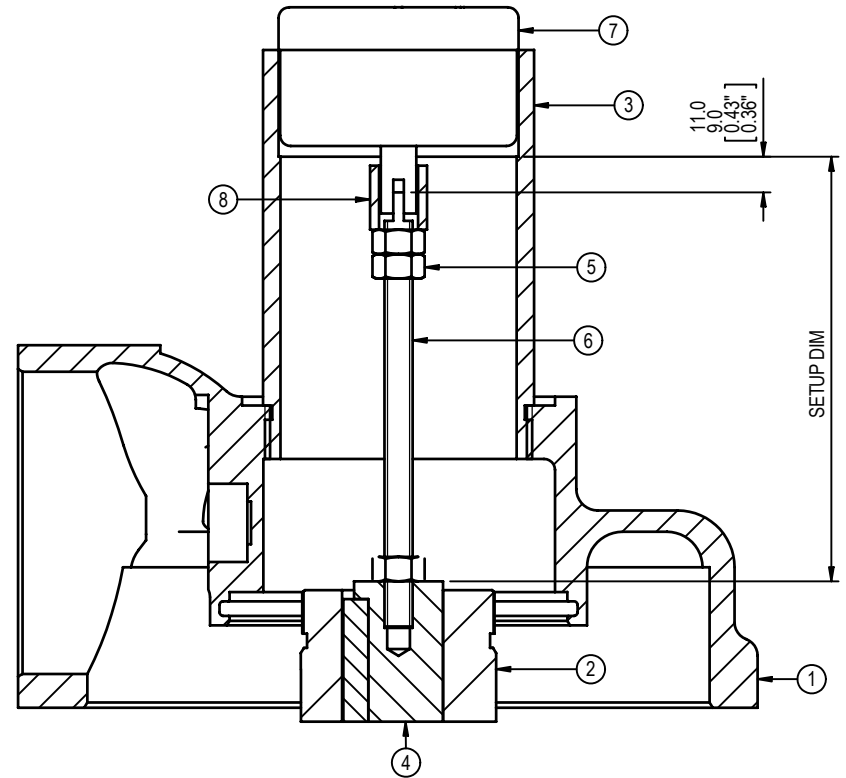
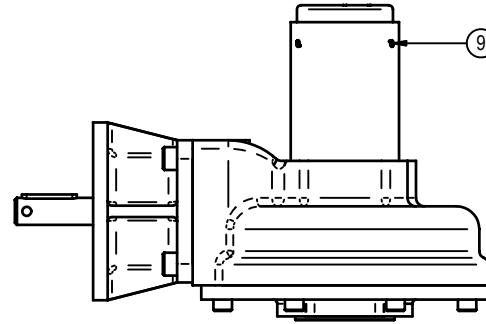
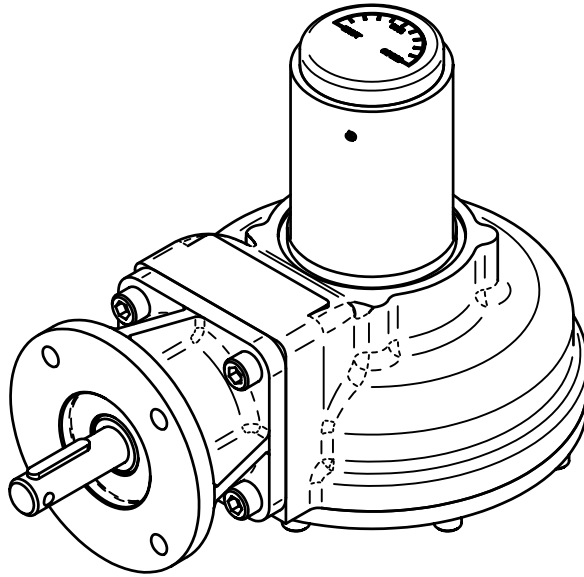
THIRD ANGLE PROJECTION  
DO NOT SCALE

EXECCO LTD © 2004

ISSUE	ALTERATIONS
A	ORIGINAL ISSUE

NOTES:

1. CUSTOMER'S SPINDLE TO BE TAPPED 5/16"-18UNC X 3/4" DEEP MIN.
2. USE SILICON SEALANT TO SEAL THE INDICATOR IN THE ADAPTOR AND THE ADAPTOR TO THE GEARCASE.
3. MEASURE THE DISTANCE FROM THE TOP OF THE VALVE STEM/SPINDLE TO THE CBORE DEPTH OF THE ADAPTOR, WHICH IS SHOWN AS THE SETUP DIM.



9	SET SCREW (CONE POINT)	3
8	COLLAR	1
7	3" DIAL INDICATOR	1
6	DRIVE COUPLING	1
5	HEX NUT	3
4	VALVE STEM/SPINDLE. SEE NOTE	1
3	ADAPTOR	1
2	OUTPUT SLEEVE	1
1	GEARCASE	1
REF.	DESCRIPTION	QTY.

ROTORK GEARS

REGINA HOUSE  
RING ROAD  
BRAMLEY  
LEEDS  
WEST YORKSHIRE

MATERIAL:-

PROJECT:- TYPICAL INSTALLATION OF 2.5" NPT DIAL INDICATOR ASSEMBLY

DRAWN:- G.P. 23/06/2004

CHECKED:-

SCALE

HEAT TREATMENT

PROTECTIVE TREATMENT  
SUITABLY PROTECT FOR STORAGE

DIAL ASSEMBLY

8000B886