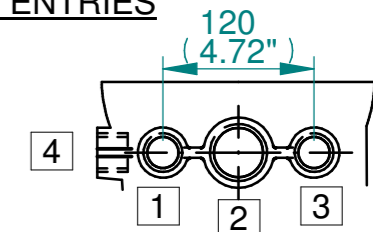


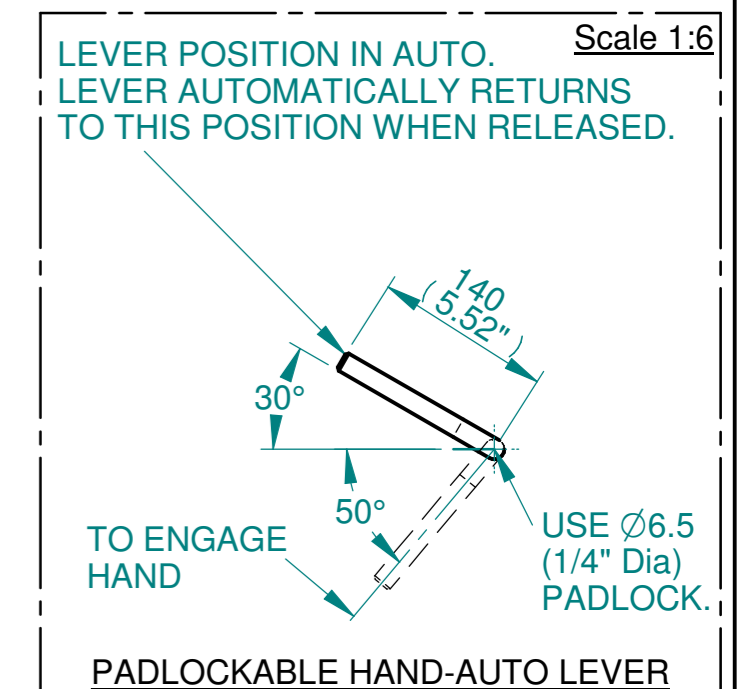
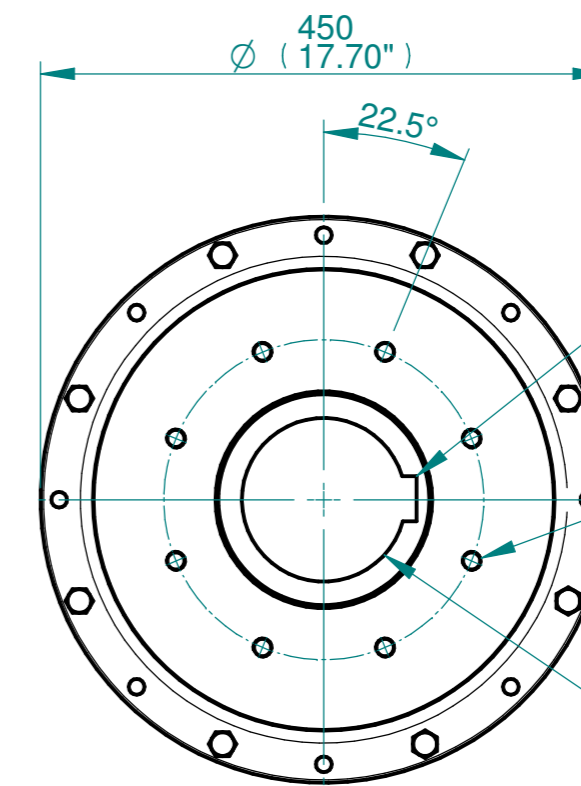
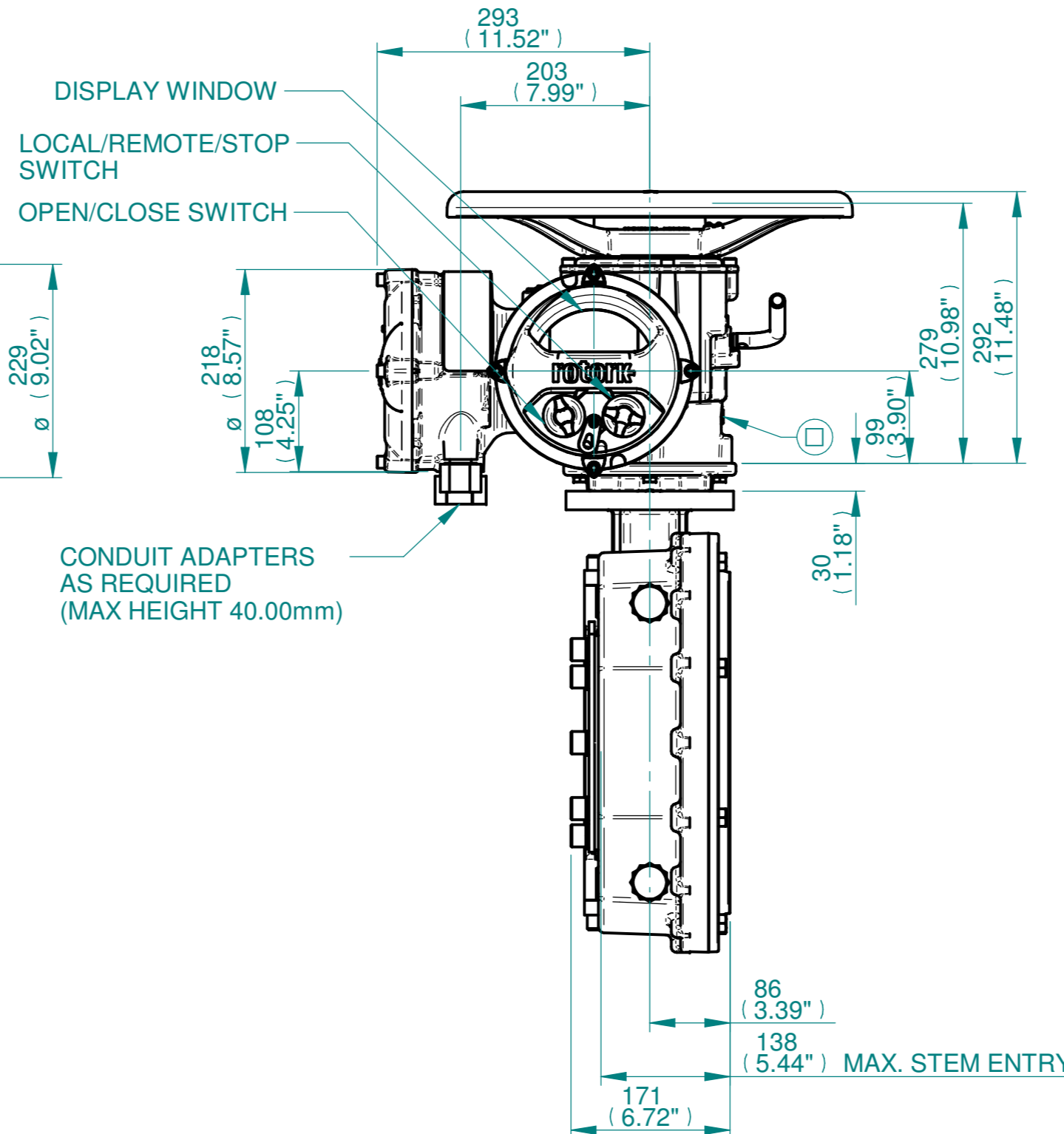
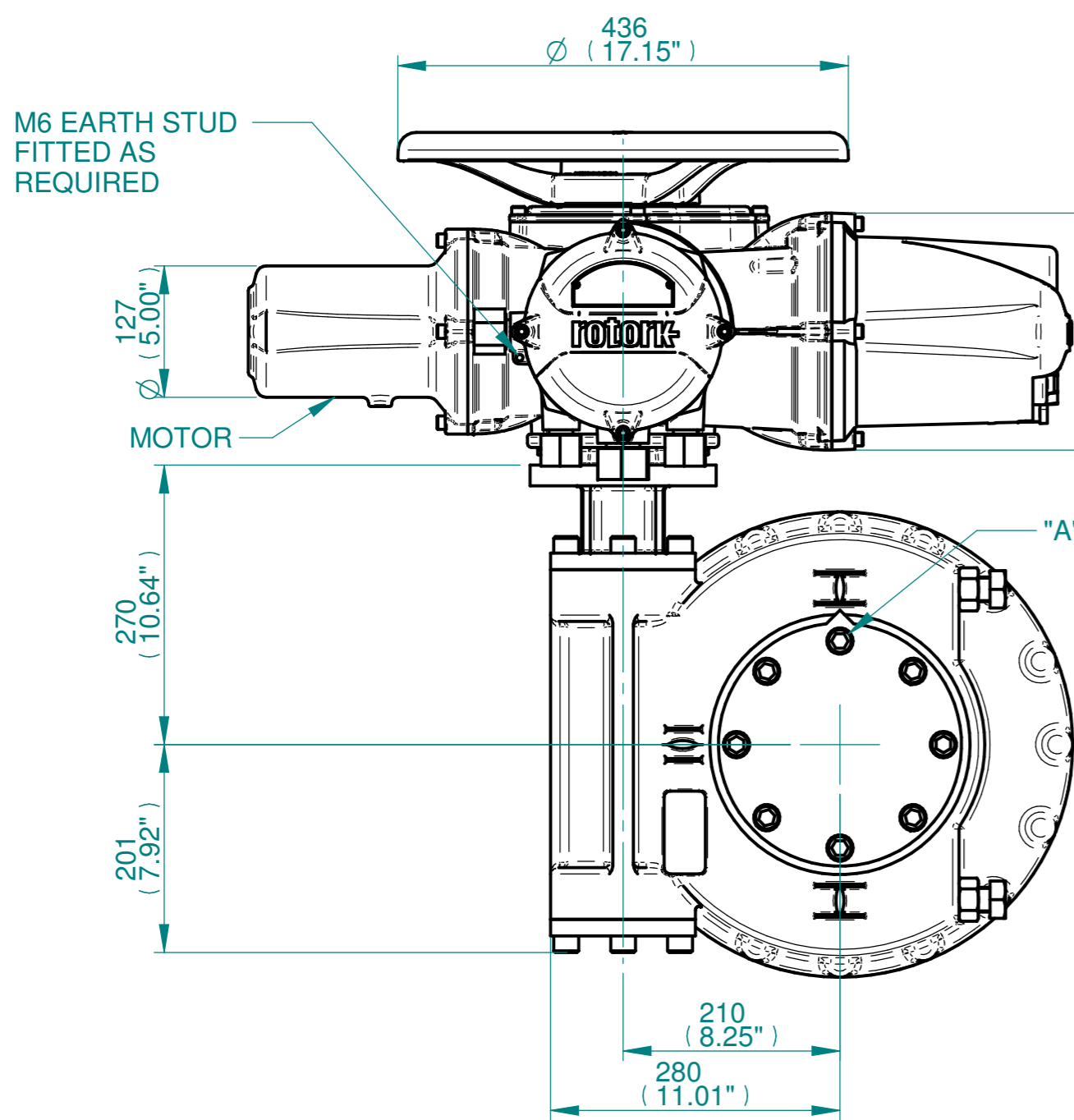
ISOMETRIC VIEW
(SCALE 1:12)

NOTES:
 :DIMENSIONS WITH "*" INDICATE COVER REMOVAL ALLOWANCE
 :ELECTRONICS COVER OPTION "****" WILL VARY DEPENDING ON CONFIGURATION
 :NETT WEIGHT = 162kg/357lbs
 : = OIL FILLER/DRAIN PLUG
 :THE INTERFACE PROVIDED FOR MOUNTING THE ACTUATOR OR SECOND STAGE GEARBOX ONTO THE VALVE SHOULD CONFORM TO GOOD ENGINEERING PRACTICES, ENSURING ADEQUATELY TOLERANCED LIMITS FOR PARALLELISM, PERPENDICULARITY AND CONCENTRICITY.
 :ROTORK CANNOT BE HELD LIABLE FOR DAMAGE TO OUR EQUIPMENT CAUSED BY EXCESSIVE LOADING FROM COVER TUBES. (SEE ALSO PUB000-124)

CONDUIT ENTRIES



| | Hole 1 | Hole 2 | Hole 3 | Hole 4 |
|---------|-------------|-------------|-------------|-------------|
| Size | As Required | As Required | As Required | As Required |
| Plugged | As Required | As Required | As Required | As Required |
| Gland | As Required | As Required | As Required | As Required |



Rotork Controls Limited
 Bath, BA1 3JQ, England.
 Telephone 01225-733200

| Actuator Size: IQ 20/25 IW7,72 & 76/MOW7 | | Gearbox output flange options | | | | | | | | Maximum Bore & Key | | | |
|--|---|-------------------------------|-----|------|-----------|-----------|------|------|---|------------------------|--------------------|--------------|----------|
| Title | IQ20/25, TOP HANDWHEEL, IW7 / IW72 / IW76 / MOW7, F/FA25 & 30, Ratios 60 & 64:1 Installation Details | Designation | F25 | F30 | - | - | FA25 | FA30 | - | - | Key form | Ø Bore | Key size |
| Drawn | TED | Checked | NJC | Date | 22-AUG-14 | No. Holes | 8 | 8 | - | - | Rectangle (BS4235) | 136 | 36 X 20 |
| Hole size | M16 | M20 | - | - | 5/8" UNC | 3/4" UNC | - | - | - | Rectangle (ANSI B17.1) | 5-1/4" | 1-1/4 X 7/8" | |
| PCD | 254 | 298 | - | - | 10" | 11-3/4" | - | - | - | Square (ANSI B17.1) | 4-7/8" | 1-1/4" SQ | |

3D Models are available in various formats under the same drawing number

| Issue | Description |
|-------|----------------------|
| 4 | OUTPUT FLANGE CHANGE |

Scale: 1:6 THIRD ANGLE PROJECTION

| Drawing Number | Issue No | Sheet No |
|----------------|----------|----------|
| I12THWIW7STD | 4 | 1 of 1 |