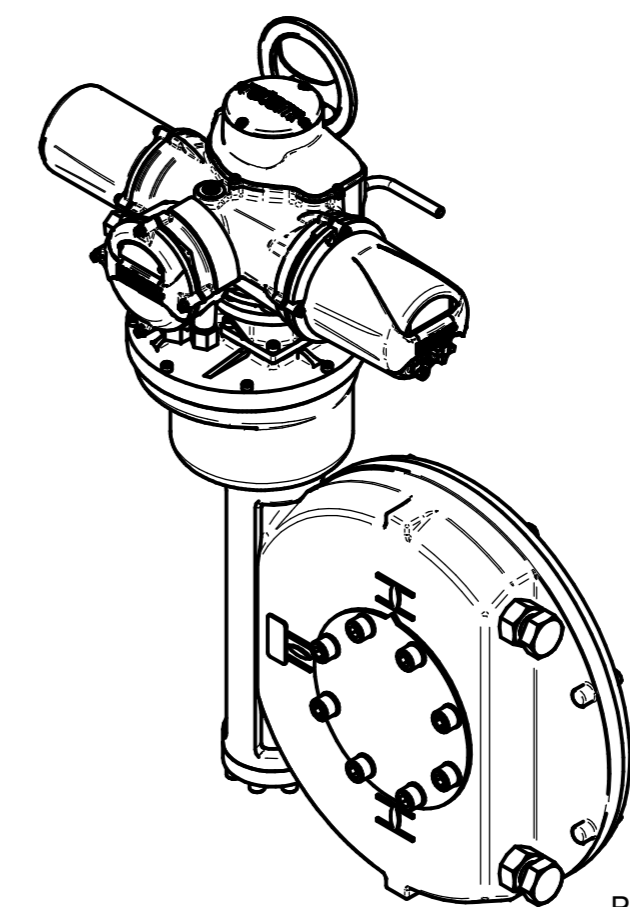
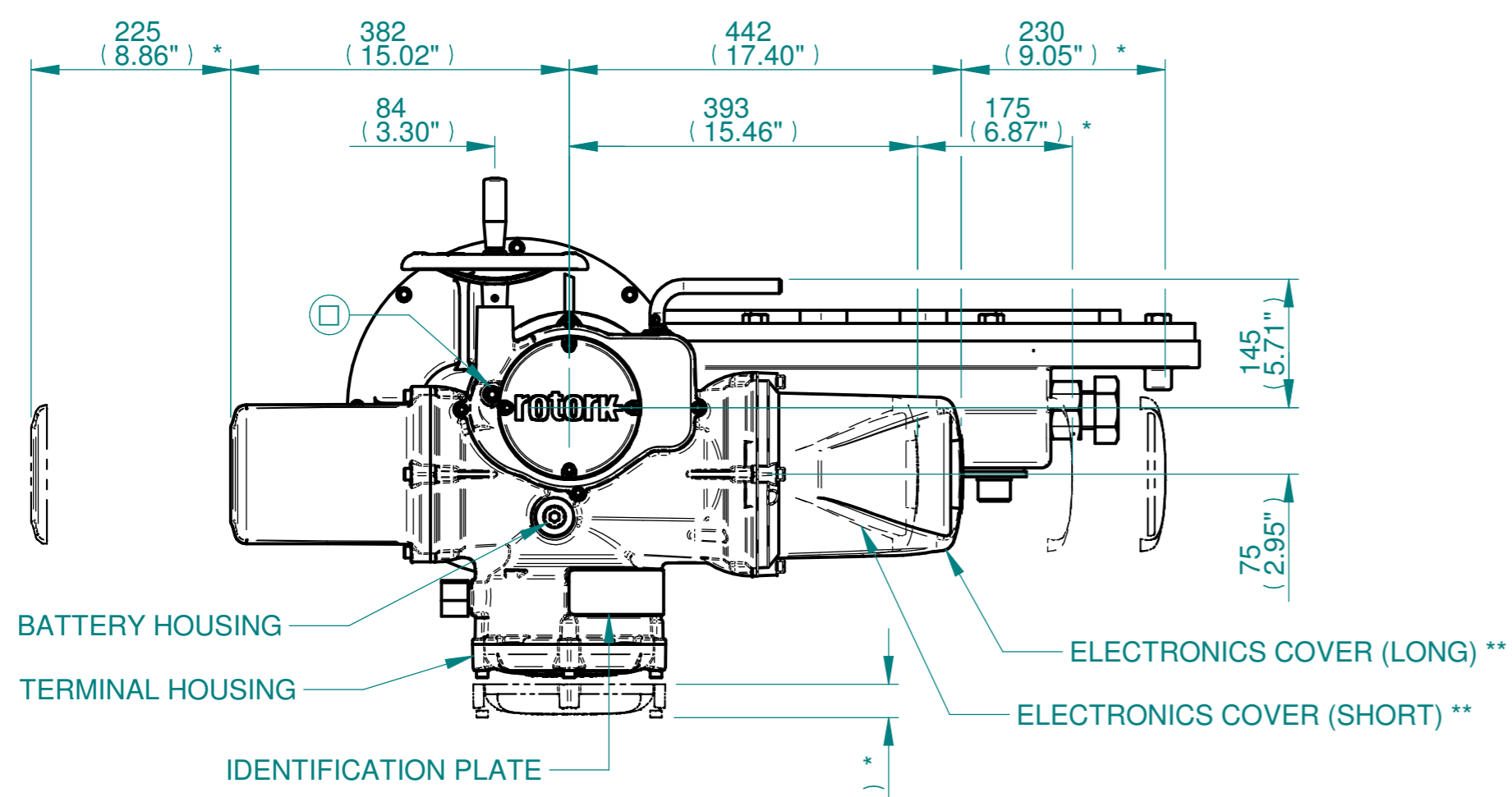
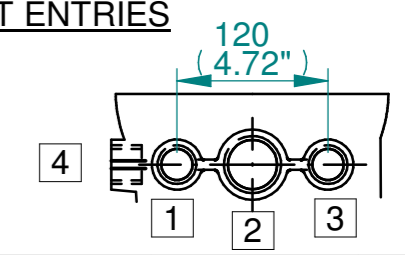


H
G
F
E
D
C
B
A

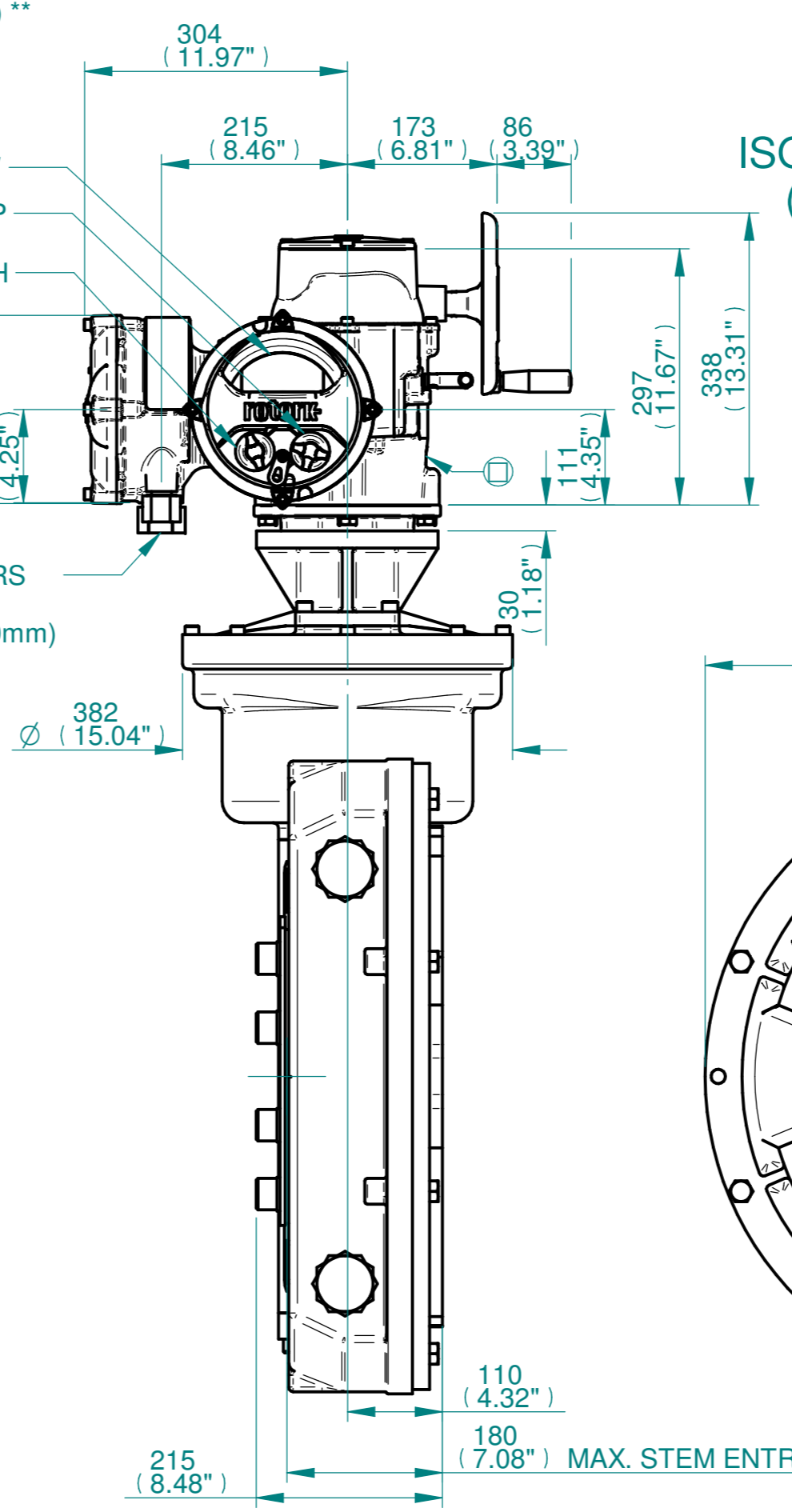
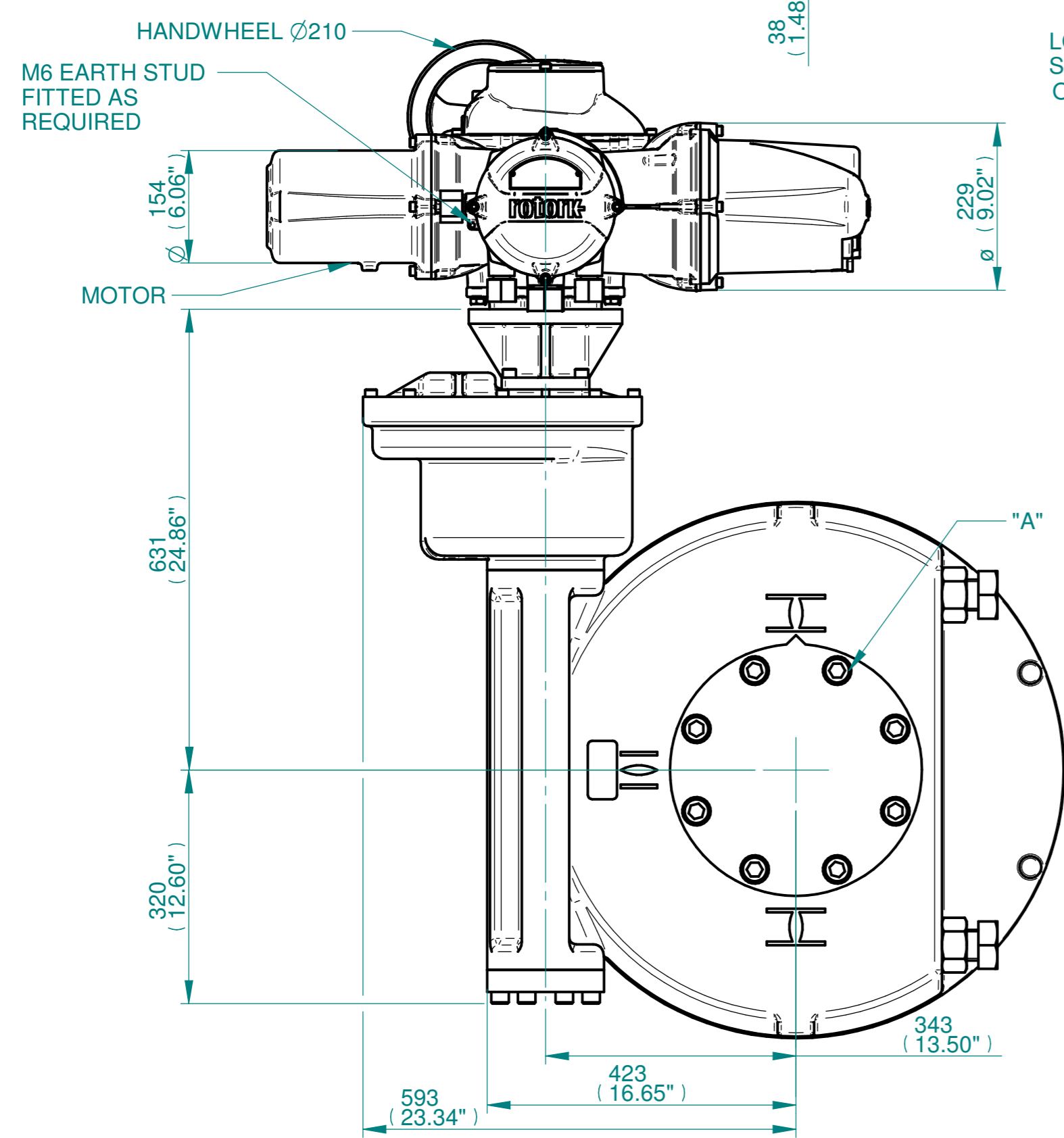


NOTES:
 :DIMENSIONS WITH "*" INDICATE COVER REMOVAL ALLOWANCE
 :ELECTRONICS COVER OPTION "****" WILL VARY DEPENDING ON CONFIGURATION
 :NETT WEIGHT = 483kg/1065lbs
 : = OIL FILLER/DRAIN PLUG
 :THE INTERFACE PROVIDED FOR MOUNTING THE ACTUATOR OR SECOND STAGE GEARBOX ONTO THE VALVE SHOULD CONFORM TO GOOD ENGINEERING PRACTICES, ENSURING ADEQUATELY TOLERANCED LIMITS FOR PARALLELISM, PERPENDICULARITY AND CONCENTRICITY.
 :ROTORK CANNOT BE HELD LIABLE FOR DAMAGE TO OUR EQUIPMENT CAUSED BY EXCESSIVE LOADING FROM COVER TUBES. (SEE ALSO PUB000-124)

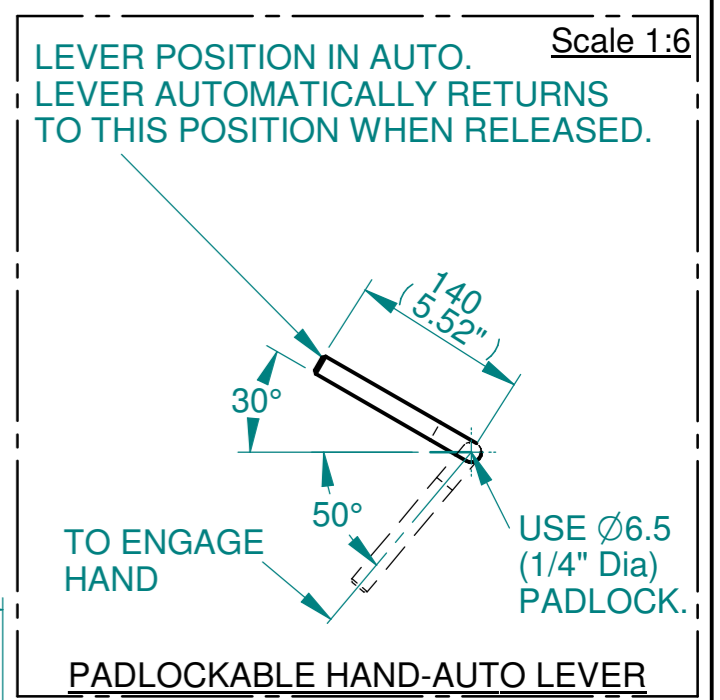
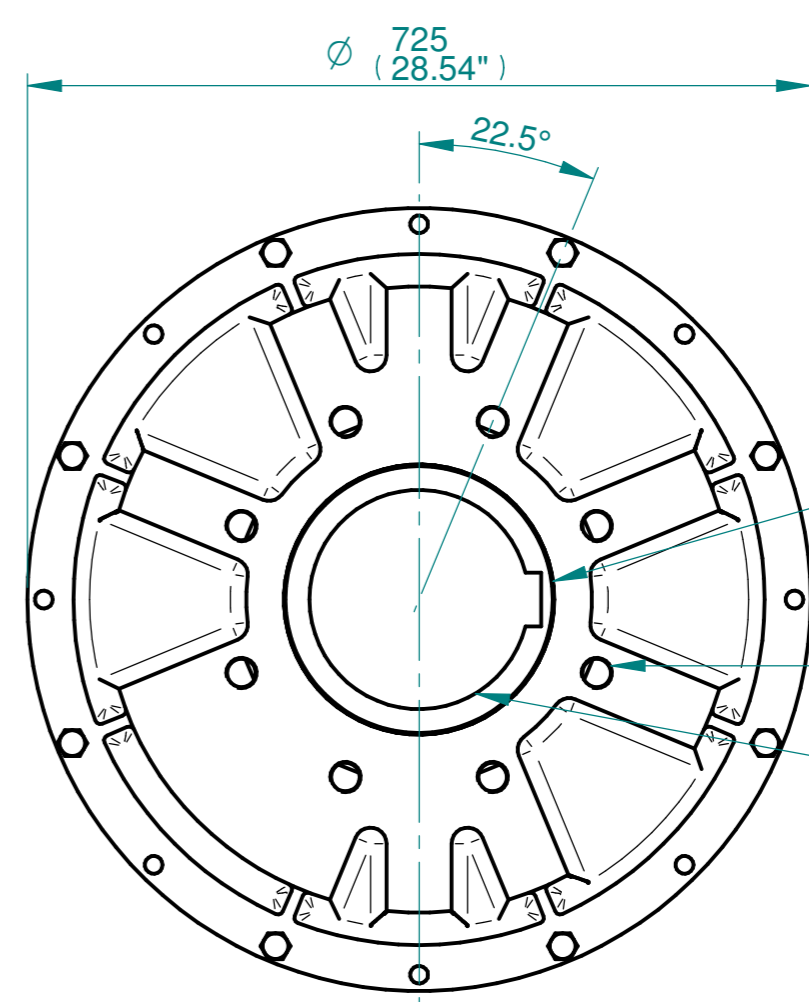
CONDUIT ENTRIES



	Hole 1	Hole 2	Hole 3	Hole 4
Size	As Required	As Required	As Required	As Required
Plugged	As Required	As Required	As Required	As Required
Gland	As Required	As Required	As Required	As Required



ISOMETRIC VIEW (SCALE 1:12)



3D Models are available in various formats under the same drawing number

Actuator Size: IQ35 IW10R/MOW10R		Gearbox output flange options								Maximum Bore & Key		
Title IQ35, SIDE HANDWHEEL, IW10R/MOW10R, F35/F40/FA35/FA40, Ratios 180:1 - 3000:1 Installation Details Drawn TED Checked NJC Date 18-AUG-14 Ref SALES Project Ref QUOTATION	Designation	F35	F40	-	-	FA35	FA40	-	-	Key form	Ø Bore	Key size
	No. Holes	8	8	-	-	8	8	-	-	Rectangle (BS4235)	203	50 X 28
	Hole size	M30	M36	-	-	1" UNC	1-1/4" UNC	-	-	Rectangle (ANSI B17.1)	7-5/8"	2 X 1-1/2"
	PCD	356	406	-	-	14"	16"	-	-	Square (ANSI B17.1)	7-3/8"	1-3/4" SQ

Issue	Description
2	4 ENTRY CHANGE

Scale: 1:7 THIRD ANGLE PROJECTION

Drawing Number	Issue No	Sheet No
I13SHWIW10RSTD	2	1 of 1

rotork
 www.rotork.com
 Rotork Controls Limited
 Bath, BA1 3JQ, England.
 Telephone 01225-733200

1 2 3 4 5 6 7 8 9 10 11 12