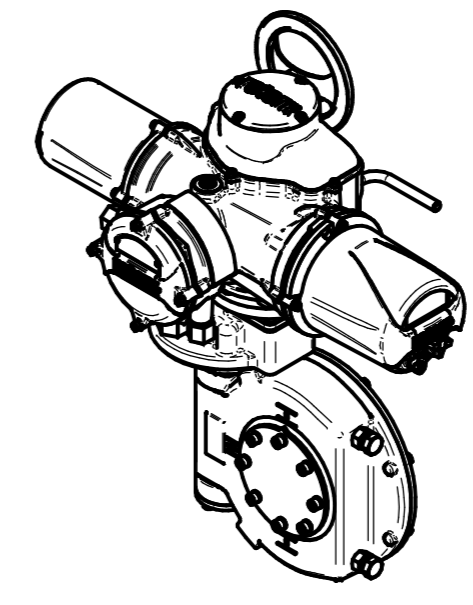
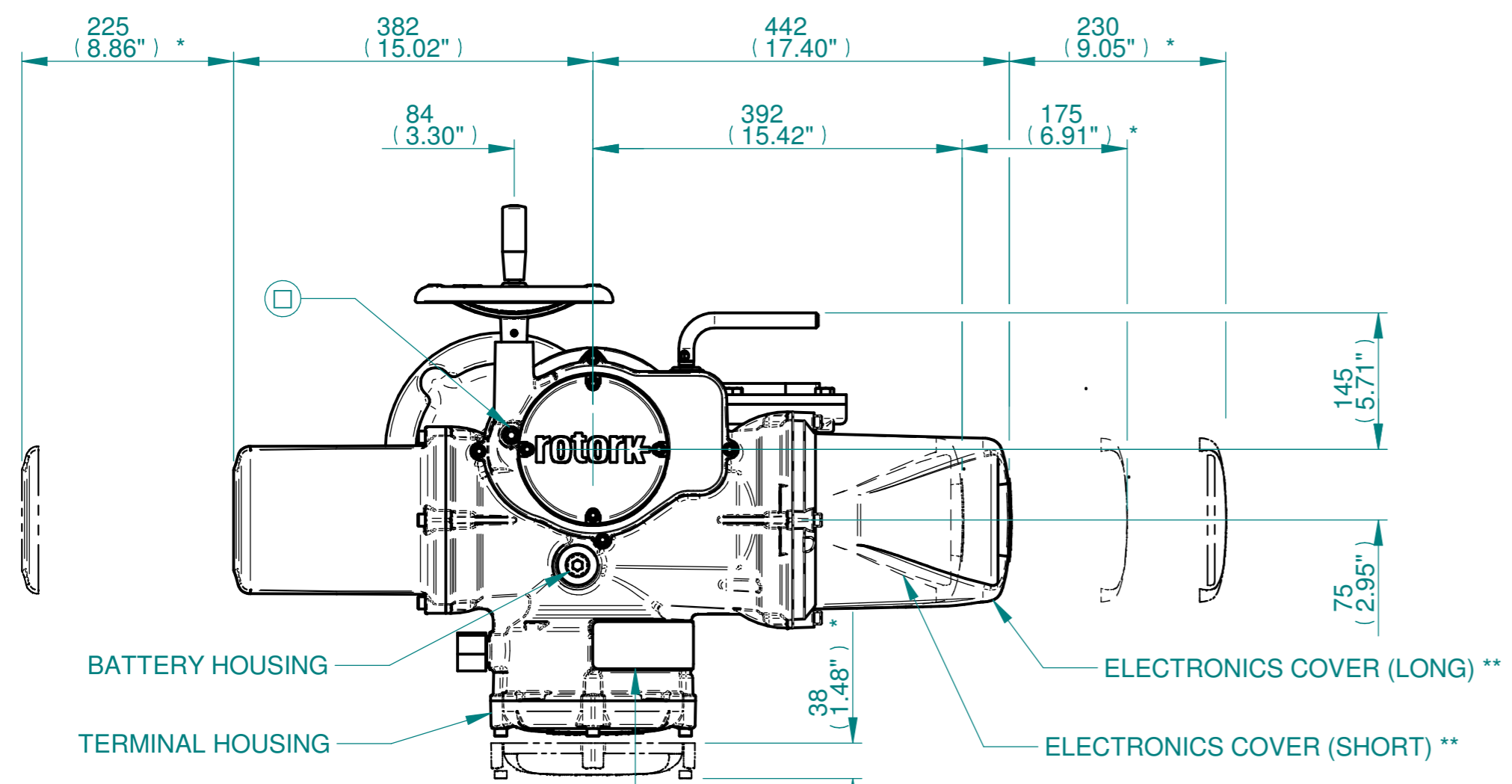


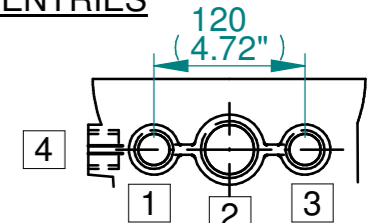
H
G
F
E
D
C
B
A



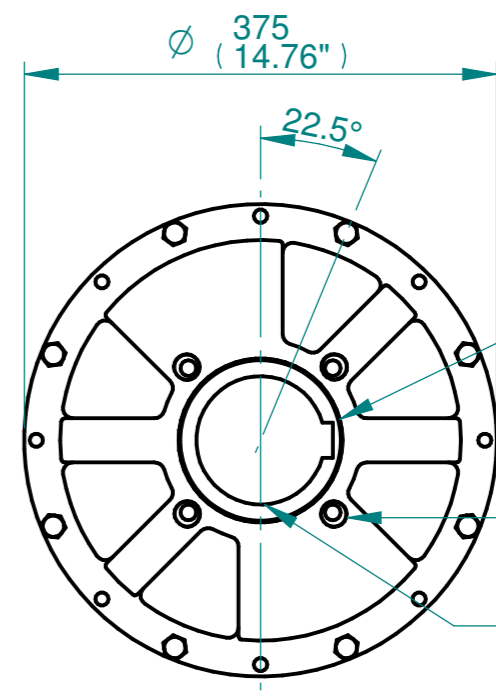
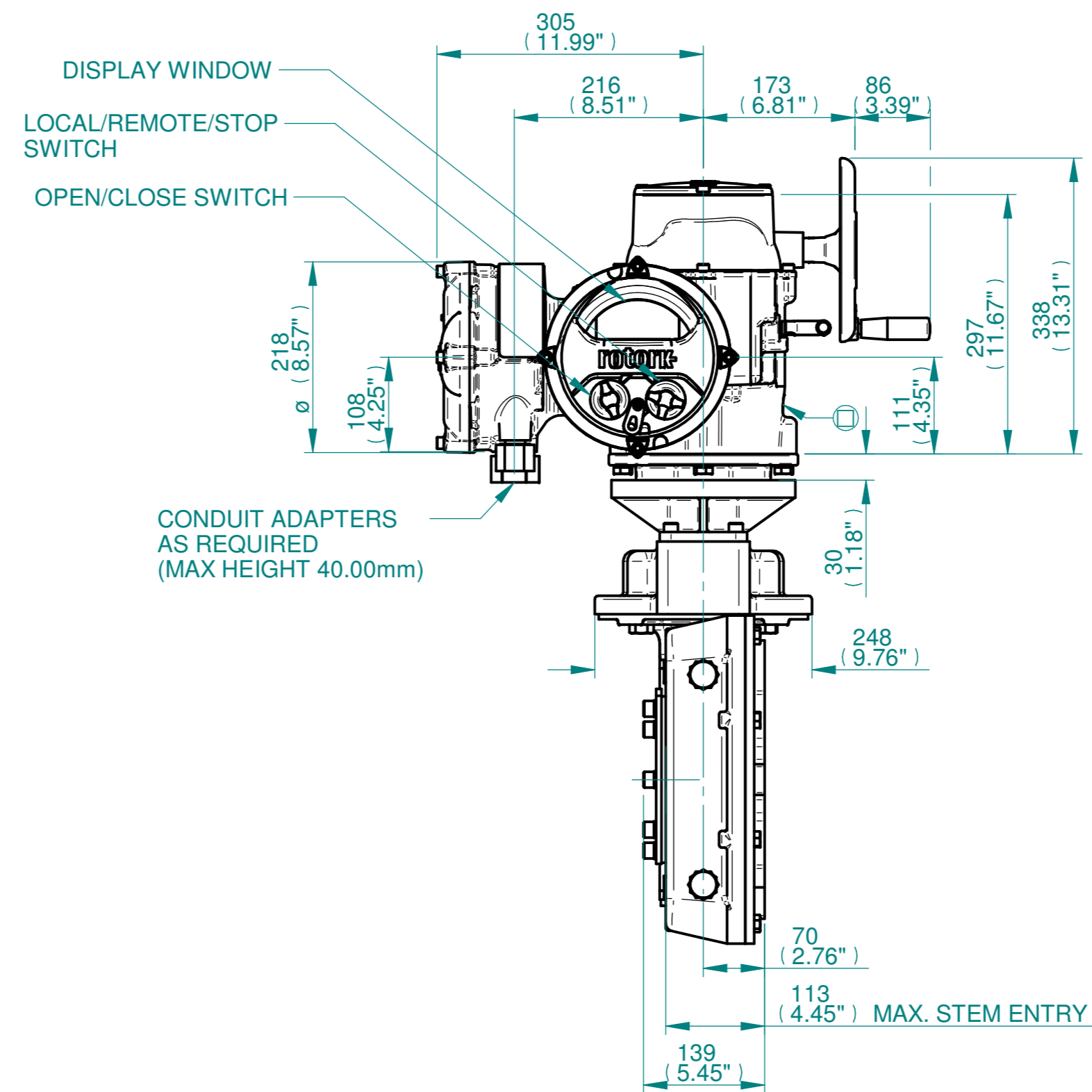
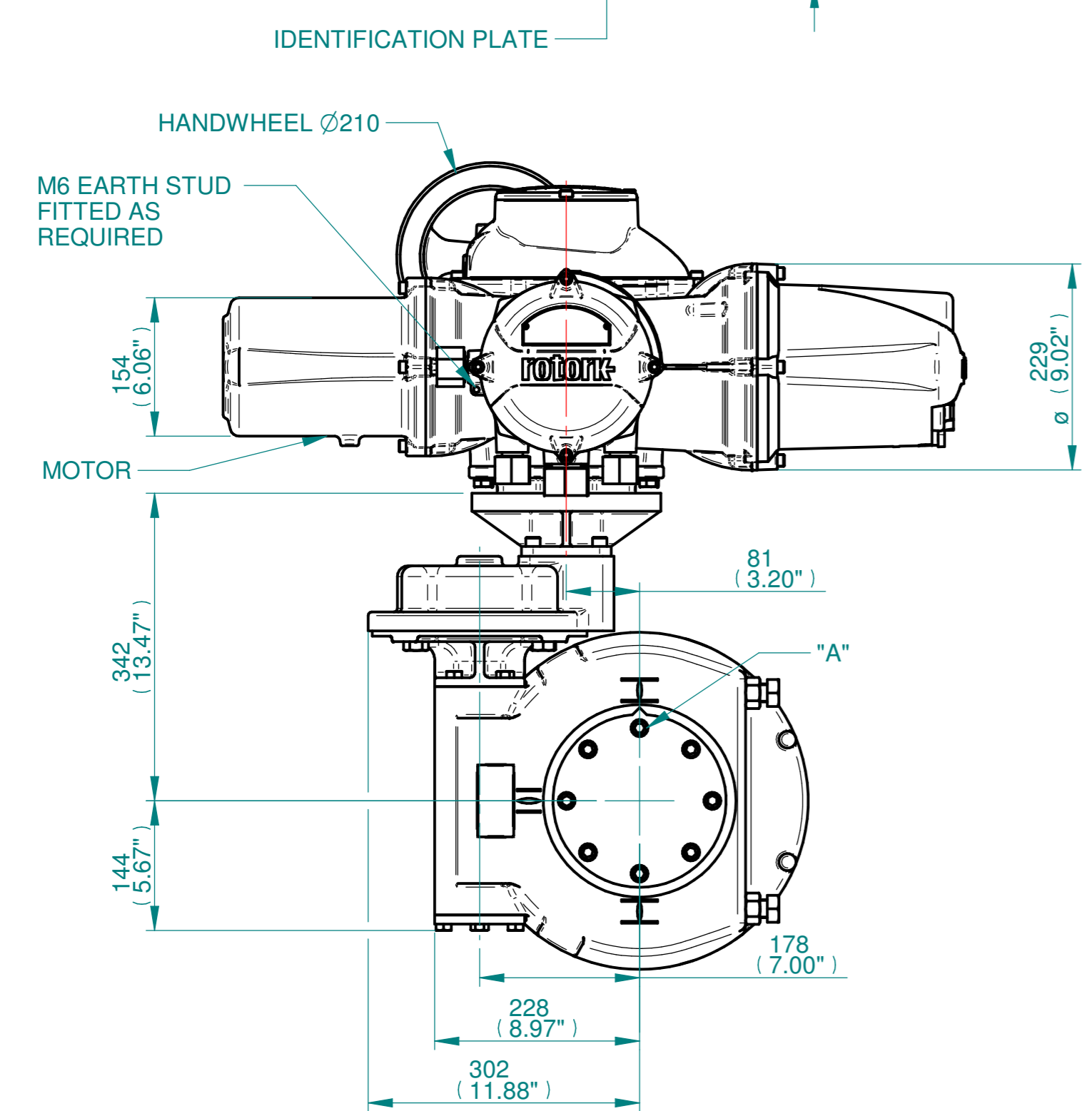
ISOMETRIC VIEW
(SCALE 1:12)

NOTES:
:DIMENSIONS WITH "*" INDICATE COVER REMOVAL ALLOWANCE
:ELECTRONICS COVER OPTION "****" WILL VARY DEPENDING ON CONFIGURATION
:NETT WEIGHT = 154kg/340lbs
: = OIL FILLER/DRAIN PLUG
:THE INTERFACE PROVIDED FOR MOUNTING THE ACTUATOR OR SECOND STAGE GEARBOX ONTO THE VALVE SHOULD CONFORM TO GOOD ENGINEERING PRACTICES, ENSURING ADEQUATELY TOLERANCED LIMITS FOR PARALLELISM, PERPENDICULARITY AND CONCENTRICITY.
:ROTORK CANNOT BE HELD LIABLE FOR DAMAGE TO OUR EQUIPMENT CAUSED BY EXCESSIVE LOADING FROM COVER TUBES. (SEE ALSO PUB000-124)

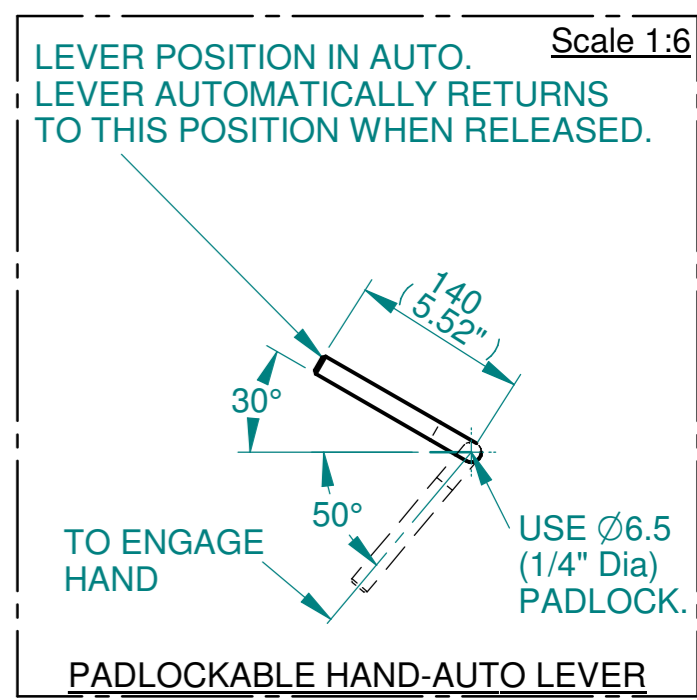
CONDUIT ENTRIES



	Hole 1	Hole 2	Hole 3	Hole 4
Size	As Required	As Required	As Required	As Required
Plugged	As Required	As Required	As Required	As Required
Gland	As Required	As Required	As Required	As Required



N.B. KEYWAY POS. CAN BE MOVED IN 45° STEPS BY REMOVING 8 SCREWS MARKED "A" AND ROTATING OUTPUT SLEEVE
SEE GEARBOX OUTPUT FLANGE OPTIONS TABLE
SEE MAXIMUM BORE & KEY TABLE



3D Models are available in various formats under the same drawing number



Rotork Controls Limited
Bath, BA1 3JQ, England.
Telephone 01225-733200

Actuator Size: IQ30/35 IW6RH		Gearbox output flange options								Maximum Bore & Key		
Title IQ30/35, SIDE HANDWHEEL, IW6RH, F16/F25/FA16/FA25, Ratios 350:1 - 420:1 Installation Details Drawn TED Checked NJC Date 18-AUG-14 Ref SALES Project Ref QUOTATION	Designation	F16	F25	-	-	FA16	FA25	-	-	Key form	Ø Bore	Key size
	No. Holes	4	8	-	-	4	8	-	-	Rectangle (BS4235)	102	28 X 16
	Hole size	M20	M16	-	-	3/4" UNC	5/8" UNC	-	-	Rectangle (ANSI B17.1)	3-7/8"	1 X 3/4"
	PCD	165	254	-	-	6.5"	10"	-	-	Square (ANSI B17.1)	3-3/4"	7/8" SQ

Issue	Description
2	4 ENTRY CHANGE

Scale: 1:6 THIRD ANGLE PROJECTION

Drawing Number	Issue No	Sheet No
I13SHWIW6RHSTD	2	1 of 1

1 2 3 4 5 6 7 8 9 10 11 12