

Max. STEM height 113 [4.45]

209 [8.23]

6 [0.24]

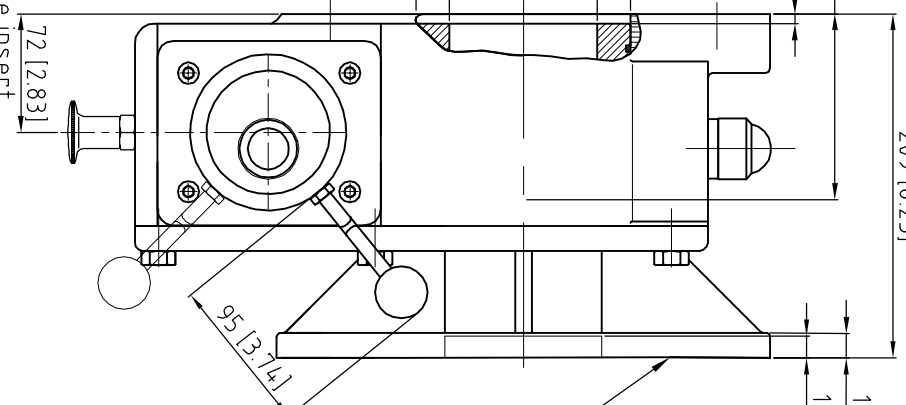
15 [0.59]
13 [0.52]

BC OFF CENTER

φ130 [5.12]

φ90 [3.54]

72 [2.83]



ACTUATOR CONN.
Acc. ISO 5211

φ28 [1.10]

φφ25 [0.98]

φ6 [0.24]

345 [13.58]

95 [3.74]

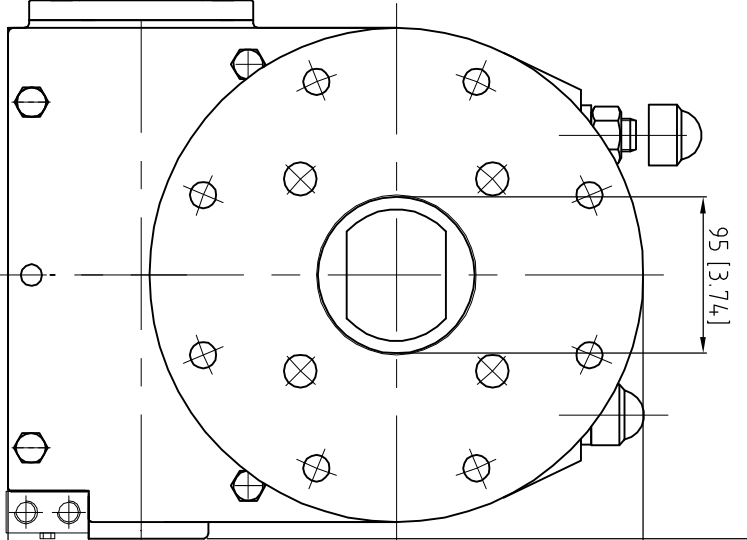
275.5 [10.85]

3/2 Relief valve
(optional)

155 [6.10]

150 [5.91]

386 [15.20]



Suitable for 500-series insert

DESCRIPTION

Travel : 5° to 95° adjustment
Ratio : 104 : 1
Turns to Close : 26
Weight : 80 Kg (178 Lb) Excl Handwheel

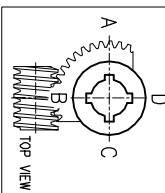
MOUNTINGHOLES

Valve connection : F16 / F25
MAX. bore : √55 [2.17] or Ø70 [2.76]
Actuator connection : F16 / F25
MAX. shaft : √65 [2.56] or Ø92 [3.62]

TORQUE

Max. Output : 7450 Nm (66000 lbf in.)
Max. Input : 298 Nm (2640 lbf in.)
M.A. : 25 ± 15%

KEYWAY POSITION OF GEARBOX
SHOWN IN CLOSED POSITION



rotork gears

Nijverheidstraat 25
3135 JG Rotterdam
The Netherlands

GEARBOX ILG/D 5000

THIS DOCUMENT IS PROPERTY OF ROTORK GEARS. NEITHER THIS OR ITS CONTENT MAY BE COPIED OR USED IN ANY OTHER WAY WITHOUT THE WRITTEN PERMISSION OF ROTORK GEARS. ACKNOWLEDGEMENT OF THE FOREGOING CONDITIONS IS REQUIRED FOR THE RETURN OF THIS DOCUMENT.



Drawn : N.M

Date : 05-06-06

Dwg Nr.: D97N-001

Rev.: 05

Contents Subject to change without notice.