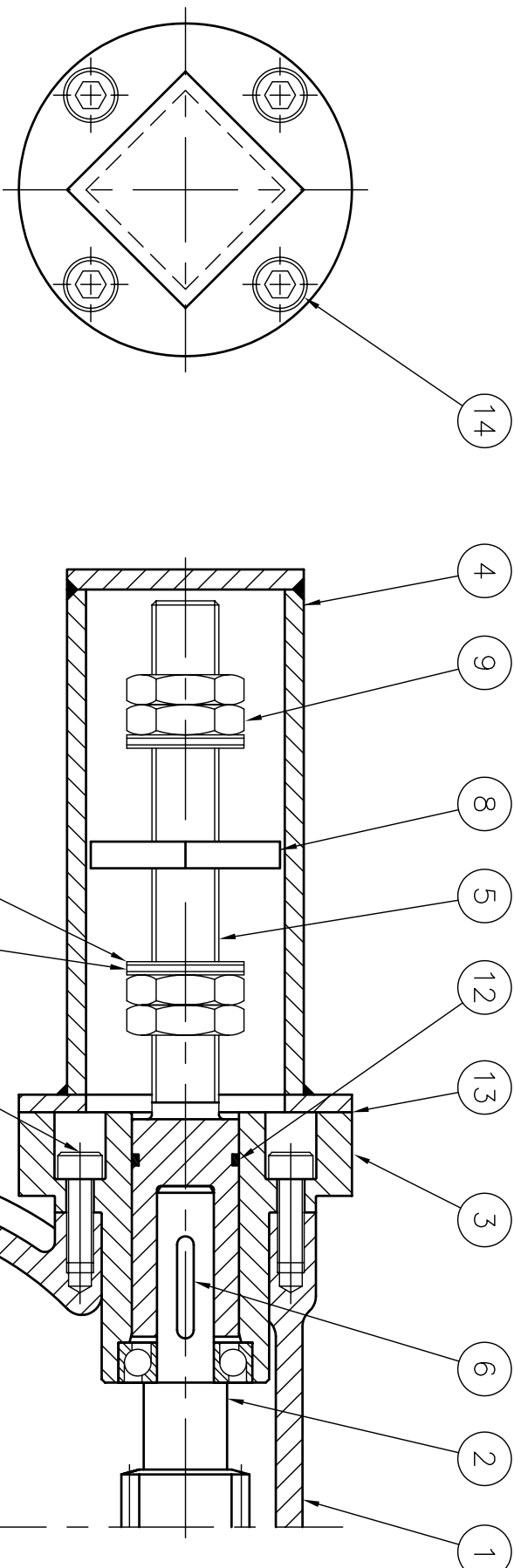


ISSUE	ALTERATIONS
A	ORIGINAL ISSUE



16	PRIMER	NEC
15	GREASE	NEC
14	S.H.C. SCREW	4
13	PAPER GASKET	1
12	O RING	1
11	THRUST WASHER	4
10	THRUST BEARING	2
9	THIN HEX NUT	4
8	SQUARE NUT	1
7	S.H.C. SCREW	4
6	KEY	1
5	SPINDLE	1
4	HOUSING	1
3	END CAP	1
2	WORM SHAFT	1
1	GEARBOX	1
REF	DESCRIPTION	QTY

- NOTES:-
 1) SPINDLE LUBRICATED USING GREASE (REF 15). HOUSING IS NOT FILLED WITH GREASE.
 2) TRAVELLING NUT FINISHED USING PRIMER (REF 16)

ISO SYMBOLS	
⊕ POSITIONAL TOLERANCE	≡ SYMMETRY TOLERANCE
⊙ CONCENTRICITY TOLERANCE	() REFERENCE DIMENSIONS ONLY
⊥ SQUARENESS TOLERANCE	□ BASIC DIMENSIONS ONLY
// PARALLELISM TOLERANCE	∅ DIAMETER

MATERIAL:- SEE TABLE

DRAWN:- B. T. 8.1.98
 CHECKED:-

SCALE 1:1

HEAT TREATMENT
 PROTECTIVE TREATMENT SUITABLE FOR STORAGE

PROJECT:- IW4 TRAVELLING NUT END-STOP

GENERAL ASSEMBLY

IW4C164

EXECCO LTD
 REGINA HOUSE
 RING ROAD
 BRAMLEY
 LEEDS
 WEST YORKSHIRE