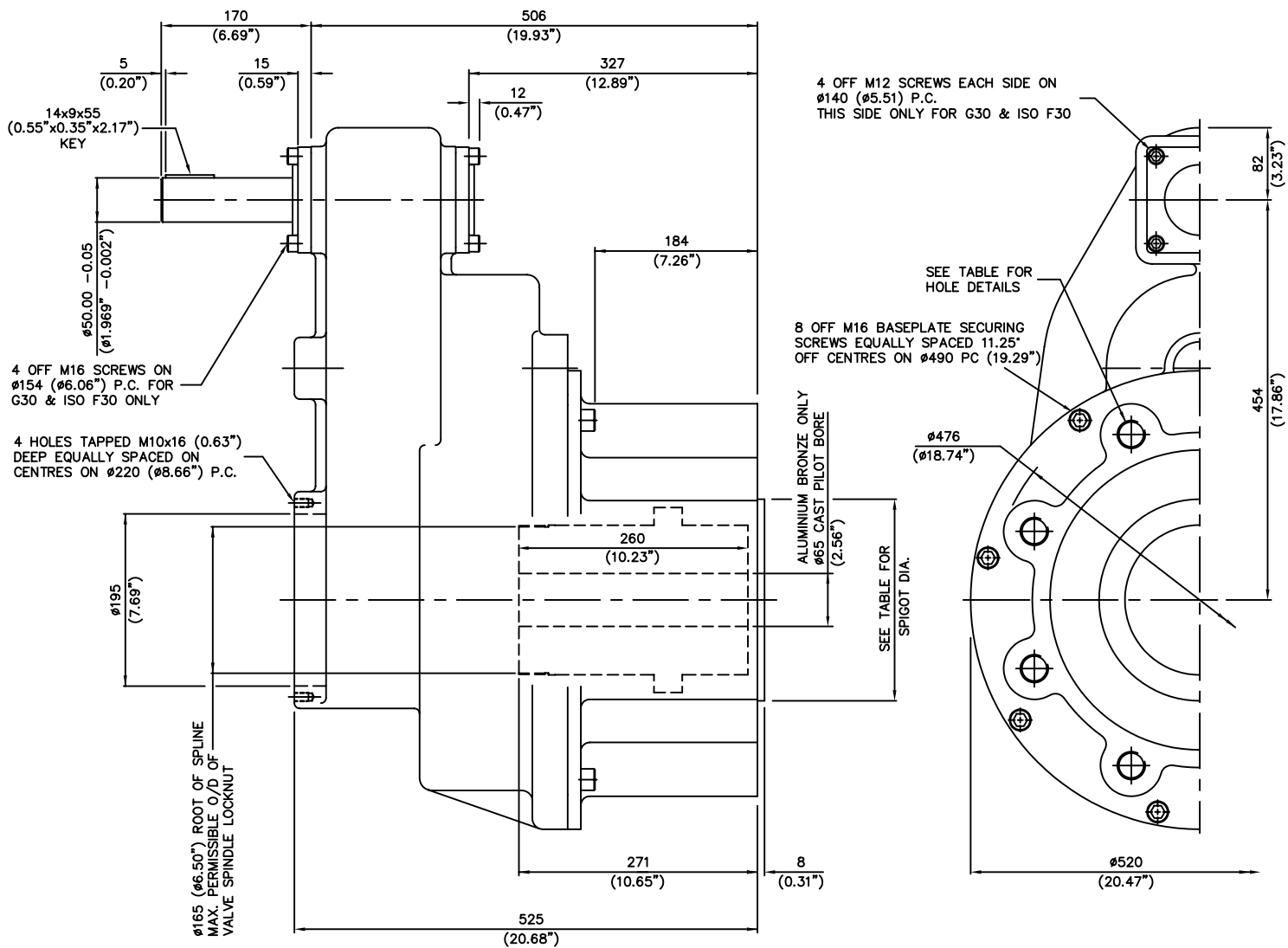


INPUT FLANGE DETAILS							
	FLANGE O/DIA.	SHAFT DIA.	SHAFT EXTENSION	RECESS DIA.	RECESS DEPTH	HOLE DETAILS (OFF CENTRES)	KEY DETAILS
ISO F16	Ø210 (Ø8.27")	Ø40.00 -0.05 (Ø1.575" -0.002")	60 (2.36")	Ø130.05 +0.05 (Ø5.120" +0.002")	5 (0.20")	4 HOLES Ø20.5 (Ø0.81") ON Ø165.0 (Ø6.50") P.C.	12x8x55 (0.47"x0.31"x2.17")
FA16	Ø210 (Ø8.27")	Ø40.00 -0.05 (Ø1.575" -0.002")	60 (2.36")	Ø126.92 +0.05 (Ø4.997" +0.002")	5 (0.20")	4 HOLES Ø20.5 (Ø0.81") ON Ø165.0 (Ø6.50") P.C.	12x8x55 (0.47"x0.31"x2.17")
ISO F25	Ø300 (Ø11.81")	Ø50.00 -0.05 (Ø1.969" -0.002")	60 (2.36")	Ø200.10 +0.10 (Ø7.878" +0.004")	5 (0.20")	8 HOLES Ø16.5 (Ø0.65") ON Ø254.0 (Ø10.00") P.C.	14x9x55 (0.55"x0.35"x2.17")
FA25	Ø300 (Ø11.81")	Ø50.00 -0.05 (Ø1.969" -0.002")	60 (2.36")	Ø152.37 +0.10 (Ø5.999" +0.004")	5 (0.20")	8 HOLES Ø16.5 (Ø0.65") ON Ø254.0 (Ø10.00") P.C.	14x9x55 (0.55"x0.35"x2.17")
ISO F30	Ø350 (Ø13.78")	Ø50.00 -0.05 (Ø1.969" -0.002")	60 (2.36")	Ø230.10 +0.10 (Ø9.059" +0.004")	6 (0.24")	8 HOLES Ø20.5 (Ø0.81") ON Ø298.0 (Ø11.73") P.C.	14x9x55 (0.55"x0.35"x2.17")
ROTORK G30	Ø418 (Ø16.46")	Ø50.00 -0.05 (Ø1.969" -0.002")	60 (2.36")	Ø216.10 +0.10 (Ø8.508" +0.004")	6 (0.24")	8 HOLES Ø23.0 (Ø0.91") ON Ø356.0 (Ø14.02") P.C.	14x9x55 (0.55"x0.35"x2.17")



BASEPLATE DETAILS		
	SPIGOT DIA.	HOLE DETAILS (22.5" OFF CENTRES)
ISO F40	Ø299.95 -0.05 (Ø11.809" -0.002")	8 HOLES M36x45 (1.77") DEEP ON Ø406.0 (Ø15.98") P.C.
FA40	Ø228.60 -0.15 (Ø9.000" -0.006")	8 HOLES 1.25"UNCx45 (1.77") DEEP ON Ø406.4 (Ø16.00") P.C.

3	CN1094 D.J.G. 20.5.99
2	CN959 B.T. 20.11.97
1	CN915 J.M.O. 19.6.97
A	ORIGINAL ISSUE
ISSUE	ALTERATIONS

**rotork
gears**

NOMINAL RATIO	10:1	12:1	15:1
EXACT RATIO	9.86:1	12.00:1	15.00:1
FACTOR (MECH. ADVANTAGE)	8.87	10.80	13.50

DRAWN: -	S.W.	10.9.96	SCALE
CHECKED: -			1:2

EXEECO LTD © 1996

OUTLINE DETAILS OF IS16
ISO & USA STANDARD

PUB\IS16CD