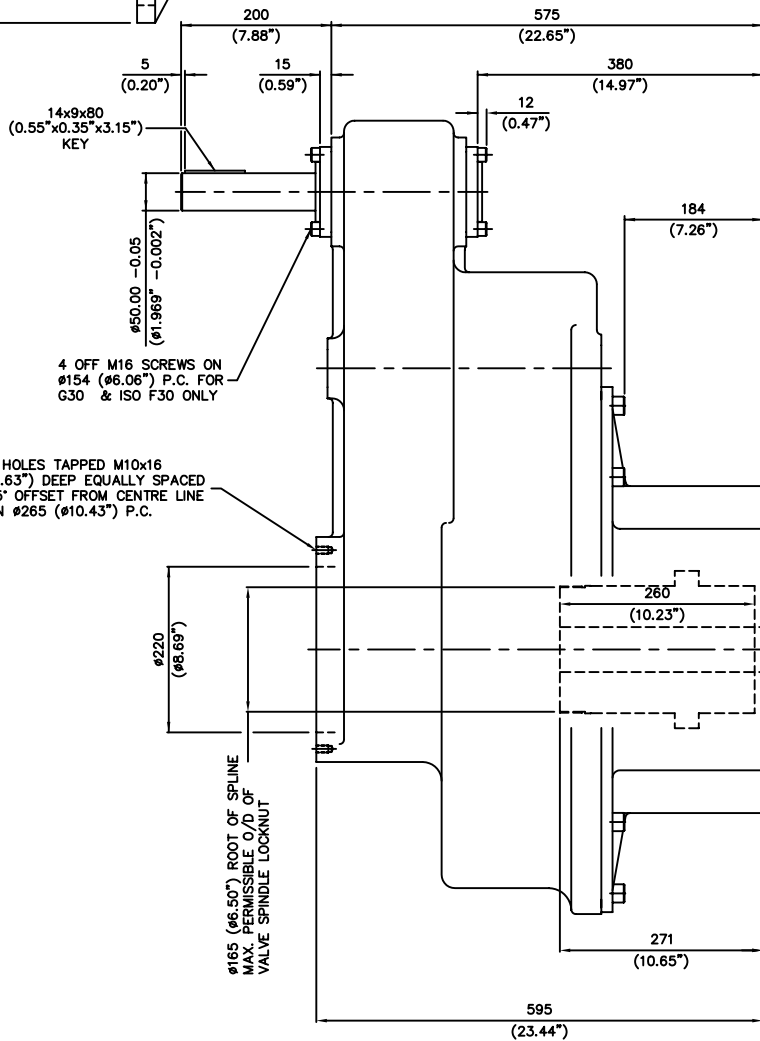
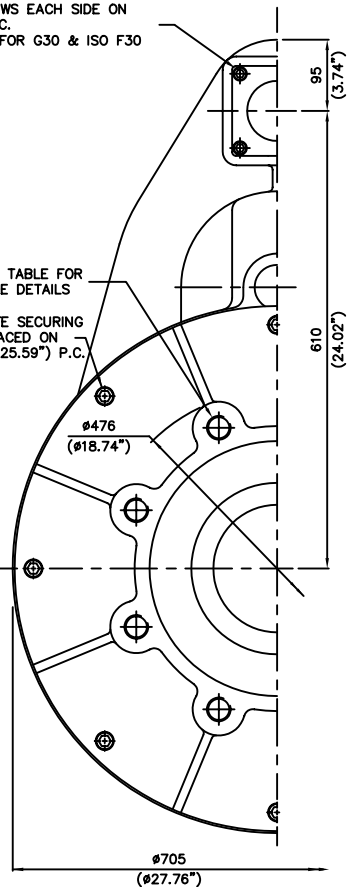


INPUT FLANGE DETAILS							
	FLANGE O/DIA.	SHAFT DIA.	SHAFT EXTENSION	RECESS DIA.	RECESS DEPTH	HOLE DETAILS (OFF CENTRES)	KEY DETAILS
ISO F16	ø210 (ø8.27")	ø40.00 -0.05 (ø1.575" -0.002")	90 (3.54")	ø130.05 +0.05 (ø5.120" +0.002")	5 (0.20")	4 HOLES ø20.5 (ø0.81") ON ø165.0 (ø6.50") P.C.	12x8x55 (0.47"x0.31"x2.17")
FA16	ø210 (ø8.27")	ø40.00 -0.05 (ø1.575" -0.002")	90 (3.54")	ø126.92 +0.05 (ø4.997" +0.002")	5 (0.20")	4 HOLES ø20.5 (ø0.81") ON ø165.0 (ø6.50") P.C.	12x8x55 (0.47"x0.31"x2.17")
ISO F25	ø300 (ø11.81")	ø50.00 -0.05 (ø1.969" -0.002")	90 (3.54")	ø200.10 +0.10 (ø7.878" +0.004")	5 (0.20")	8 HOLES ø16.5 (ø0.65") ON ø254.0 (ø10.00") P.C.	14x9x80 (0.55"x0.35"x3.15")
FA25	ø300 (ø11.81")	ø50.00 -0.05 (ø1.969" -0.002")	90 (3.54")	ø152.37 +0.10 (ø5.999" +0.004")	5 (0.20")	8 HOLES ø16.5 (ø0.65") ON ø254.0 (ø10.00") P.C.	14x9x80 (0.55"x0.35"x3.15")
ISO F30	ø350 (ø13.78")	ø50.00 -0.05 (ø1.969" -0.002")	90 (3.54")	ø230.10 +0.10 (ø9.059" +0.004")	6 (0.24")	8 HOLES ø20.5 (ø0.81") ON ø298.0 (ø11.73") P.C.	14x9x80 (0.55"x0.35"x3.15")
ROTORK G30	ø418 (ø16.46")	ø50.00 -0.05 (ø1.969" -0.002")	90 (3.54")	ø216.10 +0.10 (ø8.508" +0.004")	6 (0.24")	8 HOLES ø23.0 (ø0.91") ON ø356.0 (ø14.02") P.C.	14x9x80 (0.55"x0.35"x3.15")



4 OFF M12 SCREWS EACH SIDE ON ø140 (ø5.51") P.C. THIS SIDE ONLY FOR G30 & ISO F30



SEE TABLE FOR HOLE DETAILS

8 OFF M16 BASEPLATE SECURING SCREWS EQUALLY SPACED ON CENTRES ON ø650 (ø25.59") P.C.

ALUMINIUM BRONZE ONLY ø65 CAST PILOT BORE (2.56")

SEE TABLE FOR SPIGOT DIA.

BASEPLATE DETAILS		
	SPIGOT DIA.	HOLE DETAILS (22.5" OFF CENTRES)
ISO F40	ø299.95 -0.05 (ø11.809" -0.002")	8 HOLES M36x45 (1.77") DEEP ON ø406.0 (ø15.98") P.C.
FA40	ø228.60 -0.15 (ø9.000" -0.006")	8 HOLES 1.25"UNCx45 (1.77") DEEP ON ø406.4 (ø16.00") P.C.

3	CN1094 D.J.G. 20.5.99
2	CN959 B.T. 20.11.97
1	CN915 JMO 19.6.97
A	ORIGINAL ISSUE
ISSUE	ALTERATIONS

NOMINAL RATIO	6:1	8:1	10:1	12:1	15:1	24:1				
EXACT RATIO	6.11:1	8.11:1	10.00:1	12.03:1	15.17:1	24.09:1	DRAWN: -	S.W.	10.9.96	SCALE
FACTOR (MECH. ADVANTAGE)	5.50	7.30	9.00	10.82	13.65	21.68	CHECKED: -	1:2.4		

EXECCO LTD © 1996

OUTLINE DETAILS OF IS18 ISO & USA STANDARD

PUB\IS18CD

rotork gears