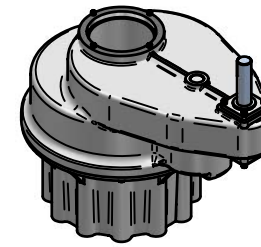


MAX BORE RECTANGULAR KEY			MAX BORE SQ KEY			MAXIMUM ACME THREAD
STD	BORE	KEY	STD	BORE	KEY	
BS4235	206	50 X 28	BS4235	-	-	8 3/4"
BS46	7.875"	2" X 1.375"	BS46	-	-	
ANSI B17.1	7.75"	2" X 1.5"	ANSI B17.1	7.5"	1.75" X 1.75"	

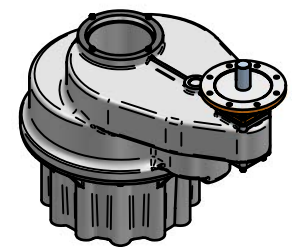
	INPUT FLANGE DETAILS					
	FLANGE O/DIA.	SHAFT DIA.	RECESS DIA.	RECESS DEPTH	HOLE DETAILS (OFF CENTRES)	KEY DETAILS
ISO F16	Ø210 (Ø8.27")	Ø40.00±0.05 (Ø1.575"±0.002")	Ø130.05±0.05 (Ø5.120"±0.002")	5 (0.20")	4 HOLES Ø20.5 (Ø0.81") ON Ø165.0 (Ø6.50") P.C.	12X8X5 (0.47"X0.31"X2.17")
FA16	Ø210 (Ø8.27")	Ø40.00±0.05 (Ø1.575"±0.002")	Ø126.92±0.05 (Ø4.997"±0.002")	5 (0.20")	4 HOLES Ø20.5 (Ø0.81") ON Ø165.0 (Ø6.50") P.C.	12X8X5 (0.47"X0.31"X2.17")
ISO F25	Ø300 (Ø11.81")	Ø50.00±0.05 (Ø1.969"±0.002")	Ø200.10±0.10 (Ø7.878"±0.004")	5 (0.20")	8 HOLES Ø16.5 (Ø0.65") ON Ø254.0 (Ø10.00") P.C.	14X9X80 (0.55"X0.35"X3.15")
FA25	Ø300 (Ø11.81")	Ø50.00±0.05 (Ø1.969"±0.002")	Ø152.30±0.17 (Ø5.996"±0.007")	5 (0.20")	8 HOLES Ø16.5 (Ø0.65") ON Ø254.0 (Ø10.00") P.C.	14X9X80 (0.55"X0.35"X3.15")
ISO F30	Ø350 (Ø13.78")	Ø50.00±0.05 (Ø1.969"±0.002")	Ø230.10±0.10 (Ø9.059"±0.004")	6 (0.24")	8 HOLES Ø20.5 (Ø0.81") ON Ø298.0 (Ø11.73") P.C.	14X9X80 (0.55"X0.35"X3.15")
ROTORK G30	Ø418 (Ø16.46")	Ø50.00±0.05 (Ø1.969"±0.002")	Ø216.10±0.10 (Ø8.508"±0.004")	6 (0.24")	8 HOLES Ø23.0 (Ø0.91") ON Ø356.0 (Ø14.02") P.C.	14X9X80 (0.55"X0.35"X3.15")

	BASEPLATE DETAILS (ALL RATIOS)		
	(ALTERNATIVES AVAILABLE ON REQUEST)		
	HOLE DETAILS (15" OFF CENTRES)	SPIGOT DIA.	
METRIC	12 HOLES M36 X 45 (1.77") DEEP ON Ø460.0 (Ø18.11") P.C.	Ø299.90±0.10 (Ø11.807"±0.004")	
USA	12 HOLES 1.5"UNC X 45 (1.77") DEEP ON Ø460.0 (Ø18.11") P.C.	Ø299.90±0.10 (Ø11.807"±0.004")	
F48	12 HOLES M36 X 45 (1.77") DEEP ON Ø483.0 (Ø19.16") P.C.	Ø369.95±0.05 (Ø14.565"±0.002")	
FA48	12 HOLES 1.25"UNC X 45 (1.77") DEEP ON Ø480.6 (Ø19.00") P.C.	Ø368.20±0.05 (Ø14.496"±0.002")	

RATIOS AVAILABLE						
NORMAL RATIO	6:1	8:1	10:1	12:1	15:1	24:1
EXACT RATIO	6.11:1	8.11:1	10.00:1	12.03:1	15.17:1	24.09:1
M.A.	5.5	7.3	9	10.82	13.65	21.68



MANUAL IS20



MOTORISED IS20

APPROX WEIGHT: 855 kg



IS20 MULTI-TURN GEARBOX 6, 8, 10, 12, 15 & 24:1 RATIOS  
 MANUAL/ F16/ FA16/ F25/ FA25/ ROTORK G30 INPUT  
 ROTORK METRIC/ USA/ F48/ FA48 BASEPLATE

DETAILS SUBJECT TO CHANGE WITHOUT PRIOR NOTICE

FOR UP TO DATE DETAILS VISIT [www.rotork.com](http://www.rotork.com)

DRAWING No	PUB/IS20	Regina House Ring Road Bramley Leeds LS134ET United Kingdom
ISSUE	A	
DATE	14/10/2009	