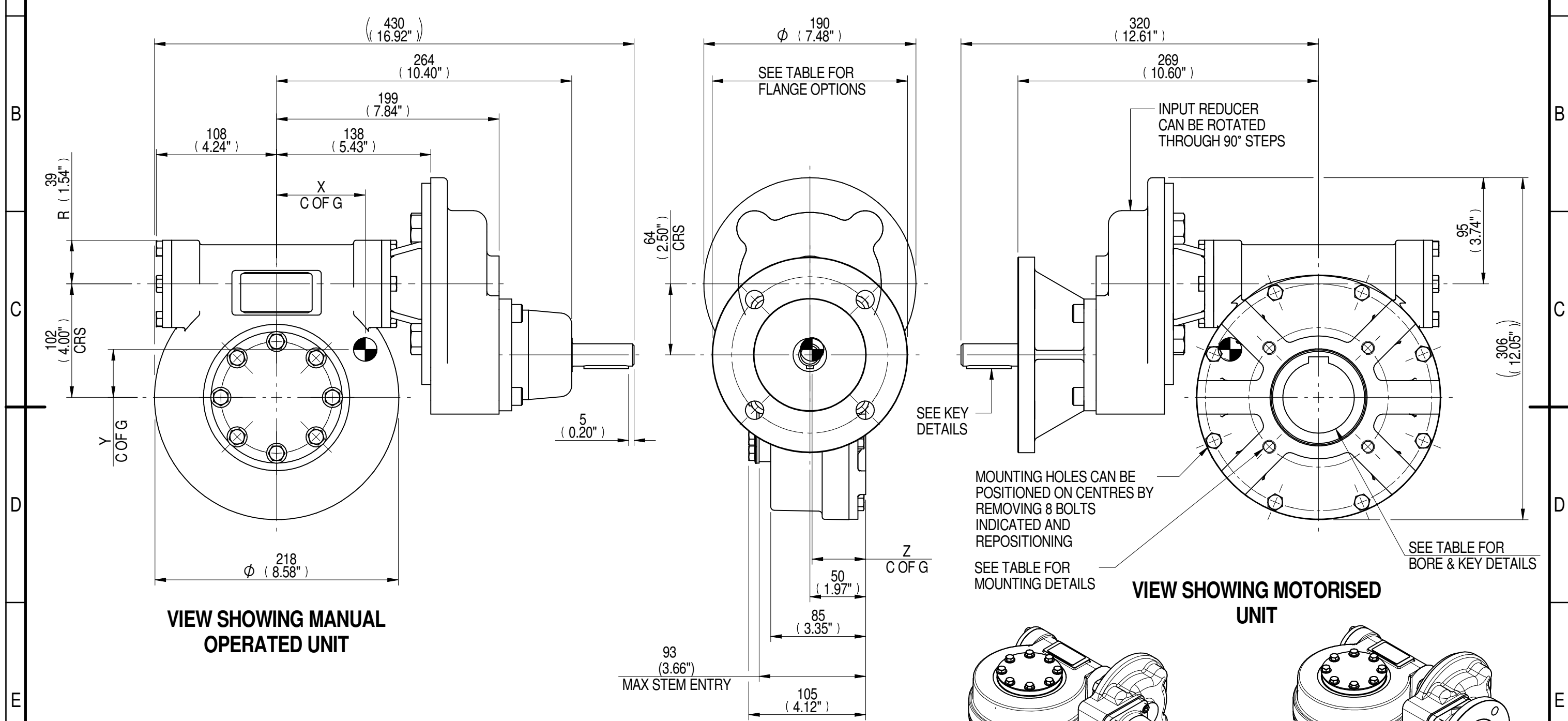
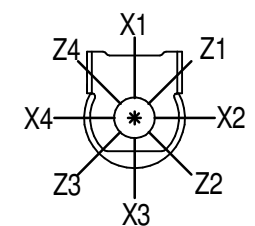


1	2		3		4		5		6			7		8	
INPUT FLANGE DETAILS							MOUNTING HOLES - BOLT CIRCLE (OFF CENTRES)								
INPUT FLANGE	FLANGE O/DIA. + THICKNESS	SHAFT DIA.	RECESS DIA.	RECESS DEPTH	HOLE DETAILS (45° OFF CENTRES)	KEY DETAILS	ISO 5211 / MSS SP-101 MOUNTING OPTION	HOLE DETAILS (45° OFF CENTRES)	STANDARD	MIN BORE	SQ KEY MAX BORE	SQ KEY SIZE	RECT. KEY MAX BORE	RECT. KEY SIZE	SQ BORE MAX
ISO F14	Ø175 x 15 (Ø6.89" x 0.59")	Ø20.00-0.05 (Ø0.787"-0.002")	Ø100.05+0.15 (Ø3.939"+0.006")	5 (0.20")	4 x Ø16.5 ON Ø140.0 P.C. (4 x Ø0.65" ON Ø5.51" P.C.)	6x6x40 (0.24"x0.24"x1.57")	ISO F12*	4 x M12 x 16 (0.63") DEEP ON Ø125.0 (Ø4.92") P.C.	BS4235	-	-	-	64.0	18 x 11	□ 51.0 (2.01")
FA14			BS46						-	2.25"	5/8" SQ.	2.50"	5/8" x 7/16"		
	ANSI B17.1	-	2.25"	1/2" SQ.	2.50"	5/8" x 7/16"	DIN 6885	-	-	-	64.0	18 x 11			



PLAN VIEW OF GEARBOX IN CLOSED POSITION SHOWING STANDARD KEYWAY POSITIONS. ALTERNATIVES AVAILABLE ON REQUEST



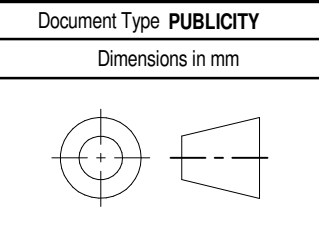
NOTES:
 1. * THREAD DEPTH DOES NOT MATCH ISO STANDARD
 2. CENTRE OF GRAVITY POSITION IS INDICATIVE FOR STANDARD BUILD WHEN IN POSITION SHOWN

RATIO	M.A. ± 10%	WEIGHT (Kg)	MAX OUTPUT (Nm)	MAX INPUT (Nm)	X	Y	Z
280	88	31	1966	22	80	43	48
210	66	31	1966	30	79	42	48
160	57	32	1898	33	79	44	48
140	44	31	1898	43	79	43	48
120	43	31	1898	44	78	43	48
80	29	31	1763	61	78	43	48
DESCRIPTION	TORQUE		CENTRE OF GRAVITY				

AS PART OF CONTINUOUS PRODUCT DEVELOPMENT, ALL DETAILS SUBJECT TO CHANGE WITHOUT PRIOR NOTICE. FOR UP TO DATE DETAILS PLEASE VISIT www.rotork.com

rotork Gears
 LEEDS - UK
www.rotork.com

This drawing is confidential and is the property of Rotork Gears and must not be reproduced either wholly or partly. All rights in respect of patents, designs and copyrights are reserved. ©2015



Document Type PUBLICITY	Title MTW4 MULTI-TURN GEARBOX, 80/120/140/160/210/280:1 MANUAL, F14/FA14 INPUT, F12/FA12 OUTPUT	Drawing Number PUB-MTW4IRS-F14-F12	Iss. 01
Dimensions in mm			
Sheet 1 of 1	Size A3		