

CIRCUIT IS DRAWN FOR A VALVE IN THE FULLY CLOSED POSITION

CIRCUIT DIAGRAM No - REV

1410-41-02

WARNING

DO NOT RUN ACTUATOR TO LIMITS WITH INCORRECT PHASE ROTATION

- O - OPEN
- C - CLOSE
- OC - OPEN CONTACTOR
- CC - CLOSE CONTACTOR
- OC1 & CC1 - CONTACTOR INTERLOCK
- OC2 & CC2 - CONTACTOR MAINTAINING CONTACT
- OC3 & CC3 - CONTACTOR AUXILIARY CONTACT

T/L5 - TORQUE/LIMITSWITCH

AS1 - AUXILIARY LIMIT SWITCH MAKE CONTACT AT END OF TRAVEL

AS2 - AUXILIARY LIMIT SWITCH BREAK CONTACT AT END OF TRAVEL

— — — LINK SUPPLIED BY ROTORK

R - RELAY

R1 & R2 - RELAY CONTACTS

M - MONITOR

FOR TYPICAL REMOTE CONTROL INDICATING, MONITORING AND ALARM CIRCUITS SEE PUBLICATION AE4.0

FUSES FS1, 2, 3 500 mA

WIRES ARE IDENTIFIED AT EACH END BY TERMINAL No. OR BY WIRE No. SHOWN

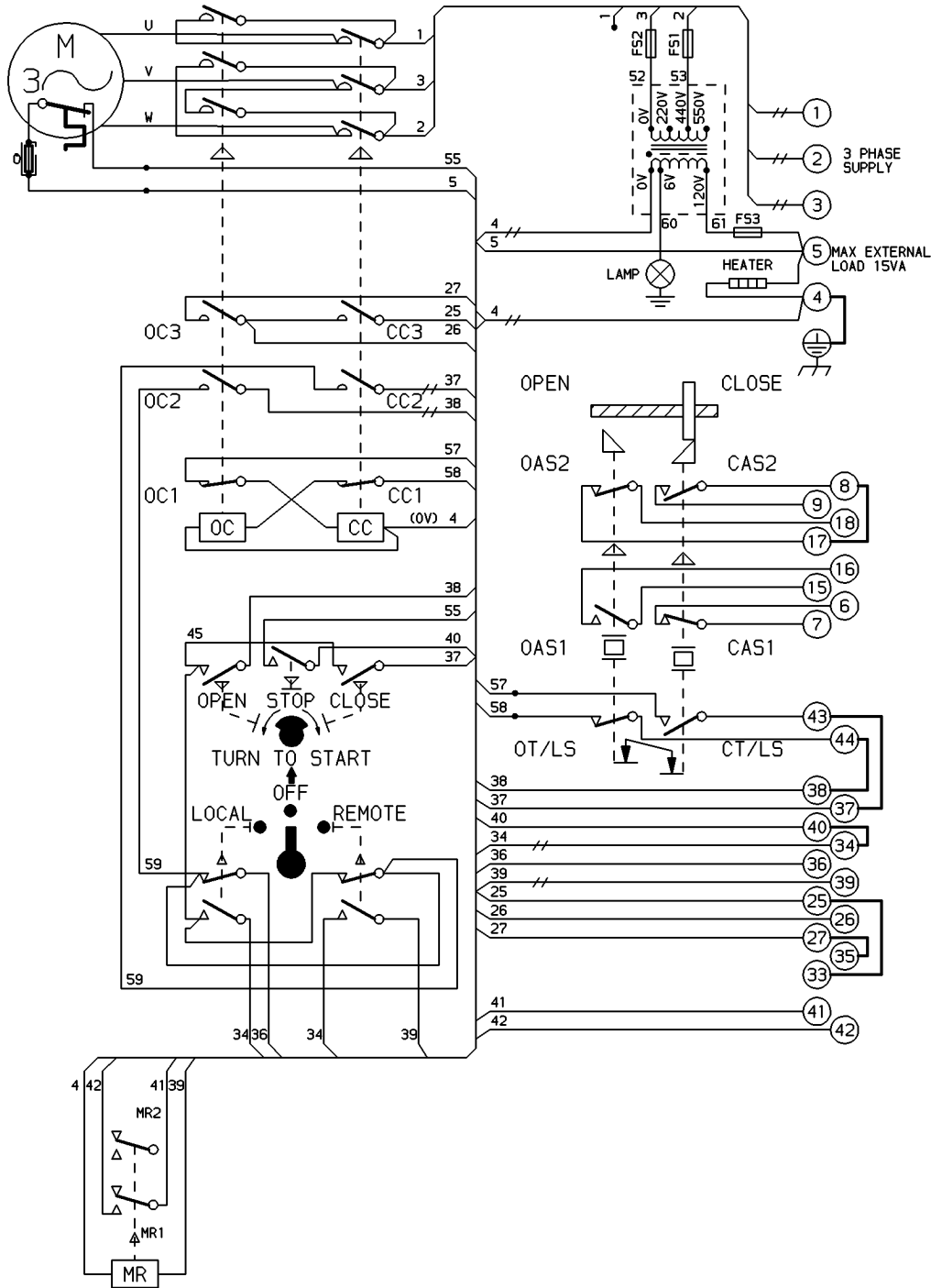
— — — INDICATES TWO WIRES TERMINATED

C.S.A. NOTE.

FOR C.S.A. ONLY FUSES FS1 & FS2 ARE NOT FITTED.

 THERMAL FUSE ATEX APPROVED UNITS ONLY.

CONTROL CIRCUIT SCHEMATIC No. WS1410-41



| TORQUE AND LIMIT SWITCH OPERATION | | | |
|-----------------------------------|------|-------|------|
| SWITCH | OPEN | INTER | SHUT |
| OT/LS | █ | █ | █ |
| CT/LS | █ | █ | █ |
| CAS1 | █ | █ | █ |
| CAS2 | █ | █ | █ |
| OAS1 | █ | █ | █ |
| OAS2 | █ | █ | █ |

█ INDICATES SWITCH MADE

| No | DATE | REVISION |
|----|-------------|--------------------------|
| 02 | 050504 D.A. | ATEX THERMAL FUSE ADDED. |



ROTORK CONTROLS LTD
BATH ENGLAND, BA1 3JQ.
(Phone 01225-733200)

ROTORK CONTROLS INC
ROCHESTER, NY 14624.
(Phone 585-328-1550)

DRAWN BY K.S.
DATE 10-12-85
CHECKED A.S.

SIMILAR TO --
JOB No --
M.I.No --

1400 SERIES SYNCROPAK WITH MONITOR RELAY.

CIRCUIT DIAGRAM No -REV
1410-41-02