

CIRCUIT IS DRAWN FOR A VALVE IN THE FULLY CLOSED POSITION

CIRCUIT DIAGRAM No

1410-42-02

**WARNING**

DO NOT RUN ACTUATOR TO LIMITS WITH INCORRECT PHASE ROTATION

- O - OPEN
- C - CLOSE
- OC - OPEN CONTACTOR
- CC - CLOSE CONTACTOR
- OC1 & CC1 - CONTACTOR INTERLOCK
- OC2 & CC2 - CONTACTOR MAINTAINING CONTACT
- OC3 & CC3 - CONTACTOR AUXILIARY CONTACT

T/LS - TORQUE/LIMITSWITCH

AS1 - AUXILIARY LIMIT SWITCH MAKE CONTACT AT END OF TRAVEL

AS2 - AUXILIARY LIMIT SWITCH BREAK CONTACT AT END OF TRAVEL

— LINK SUPPLIED BY ROTORK

R - RELAY

R1 & R2 - RELAY CONTACTS

FOR TYPICAL REMOTE CONTROL INDICATING, MONITORING AND ALARM CIRCUITS SEE PUBLICATION AE4.0


FUSES FS1, 2, 3 500 mA

WIRES ARE IDENTIFIED AT EACH END BY TERMINAL No. OR BY WIRE No. SHOWN

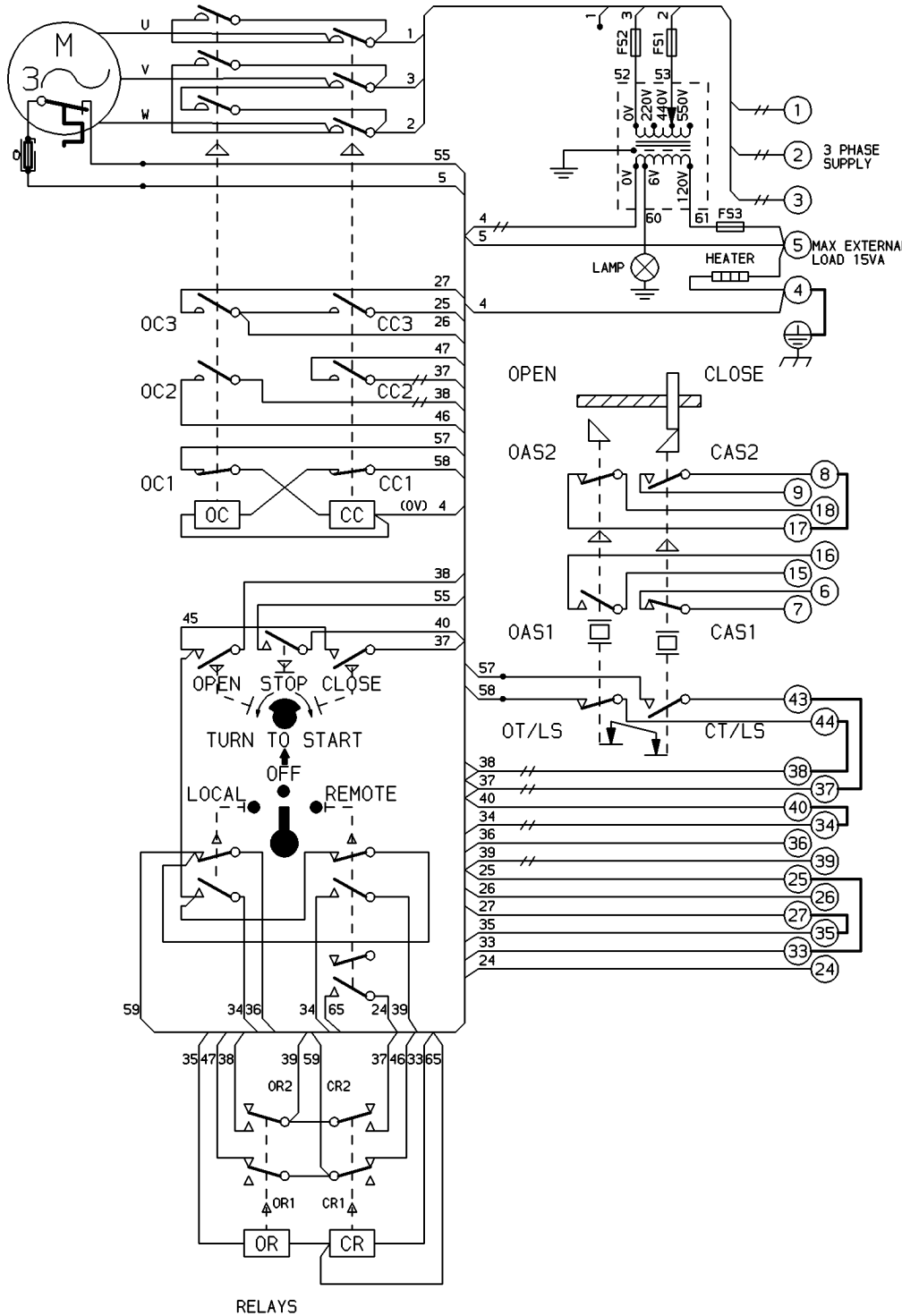
— INDICATES TWO WIRES TERMINATED

C.S.A. NOTE.

FOR C.S.A. ONLY FUSES FS1 & FS2 ARE NOT FITTED.

 THERMAL FUSE. ATEX APPROVED UNITS ONLY.

CONTROL CIRCUIT SCHEMATIC No. WS1410-42



TORQUE AND LIMIT SWITCH OPERATION			
SWITCH	OPEN	INTER	SHUT
OT/LS	█	█	█
CT/LS	█	█	█
CAS1	█	█	█
CAS2	█	█	█
OAS1	█	█	█
OAS2	█	█	█

█ INDICATES SWITCH MADE

No	DATE	REVISION	No	DATE	REVISION	DRAWN K.S. DATE 10-12-85	CHECKED A.S. DATE 11-12-85	1400 SERIES SYNCROPAK WITH INTERPOSING RELAYS.
02	July03	ATEX THERMAL FUSE ADDED						
						<b>rotork</b> ROTORK CONTROLS LIMITED BATH ENGLAND BA1 3JQ		CIRCUIT DIAGRAM <b>1410-42-02</b>