

CIRCUIT IS DRAWN FOR A VALVE IN THE FULLY CLOSED POSITION

CIRCUIT DIAGRAM No - REV

1411-45-02

WARNING

DO NOT RUN ACTUATOR TO LIMITS WITH INCORRECT PHASE ROTATION

- O - OPEN
- C - CLOSE
- OC - OPEN CONTACTOR
- CC - CLOSE CONTACTOR
- OC1 & CC1 - CONTACTOR INTERLOCK
- OC2 & CC2 - CONTACTOR MAINTAINING CONTACT
- OC3 & CC3 - CONTACTOR AUXILIARY CONTACT

- T/LS - TORQUE/LIMITSWITCH
- AS1 - AUXILIARY LIMIT SWITCH MAKE CONTACT AT END OF TRAVEL
- AS2 - AUXILIARY LIMIT SWITCH BREAK CONTACT AT END OF TRAVEL
- LINK SUPPLIED BY ROTORK

- R - RELAY
- R1 & R2 - RELAY CONTACTS
- M - MONITOR

FOR TYPICAL REMOTE CONTROL INDICATING, MONITORING AND ALARM CIRCUITS SEE PUBLICATION AE4.0

FUSES FS1,2,3 500 mA

WIRES ARE IDENTIFIED AT EACH END BY TERMINAL No. OR BY WIRE No. SHOWN

-- INDICATES TWO WIRES TERMINATED

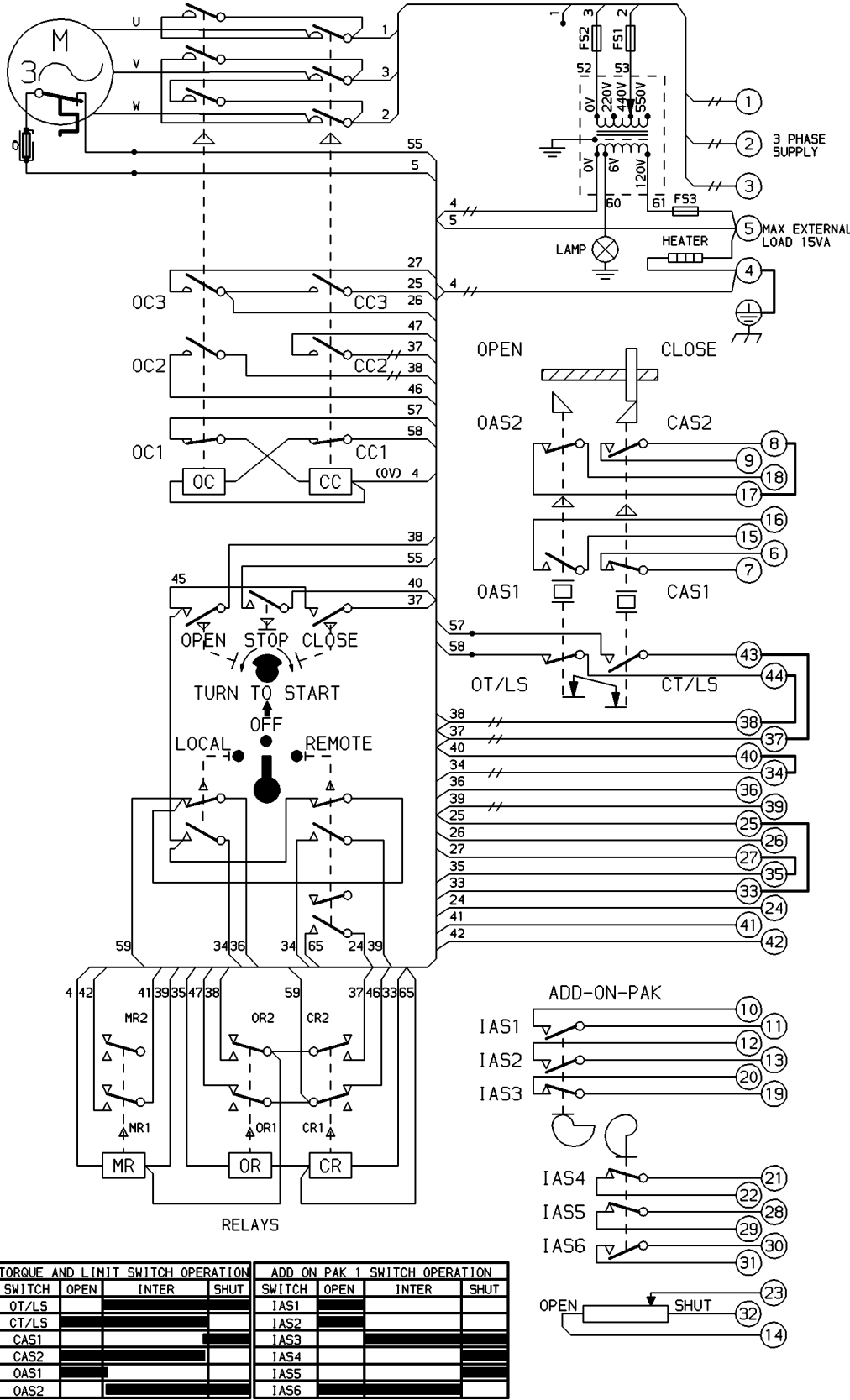
IAS1/2/3 - ADJUSTABLE TO OPERATE TOGETHER AT ANY POSITION (DRAWN AS FOR EXTRA OPEN AUXILIARY)

IAS4/5/6 - ADJUSTABLE TO OPERATE TOGETHER AT ANY POSITION (DRAWN AS FOR EXTRA CLOSE AUXILIARY)

IAS 1 TO 6 INTERMEDIATE AUXILIARY SWITCHES. CONTACT FUNCTIONS MAY BE REVERSED BY SETTING CAM TO RELEASE INSTEAD OF DEPRESS SWITCH AS ILLUSTRATED

CONTROL CIRCUIT SCHEMATIC No. WS1411-45

 THERMAL FUSE ATEX APPROVED UNITS ONLY.



TORQUE AND LIMIT SWITCH OPERATION				ADD ON PAK 1 SWITCH OPERATION			
SWITCH	OPEN	INTER	SHUT	SWITCH	OPEN	INTER	SHUT
OT/LS				IAS1			
CT/LS				IAS2			
CAS1				IAS3			
CAS2				IAS4			
OAS1				IAS5			
OAS2				IAS6			

INDICATES SWITCH MADE

No 02
 DATE 040405
 P.J.W
 REVISION ATEX THERMAL FUSE ADDED
 CHECKED D.A



ROTORK CONTROLS LTD
 BATH ENGLAND, BA1 3JQ.
 (Phone 01225-733200)
 ROTORK CONTROLS INC
 ROCHESTER, NY 14624.
 (Phone 585-328-1550)

DRAWN BY K.S
 DATE 101285
 CHECKED A.S
 SIMILAR TO --
 JOB No --
 M.I.No --

1400 SERIES SYNCROPAK WITH INT + MON RLY & AOP1

CIRCUIT DIAGRAM No -REV
 1411-45-02