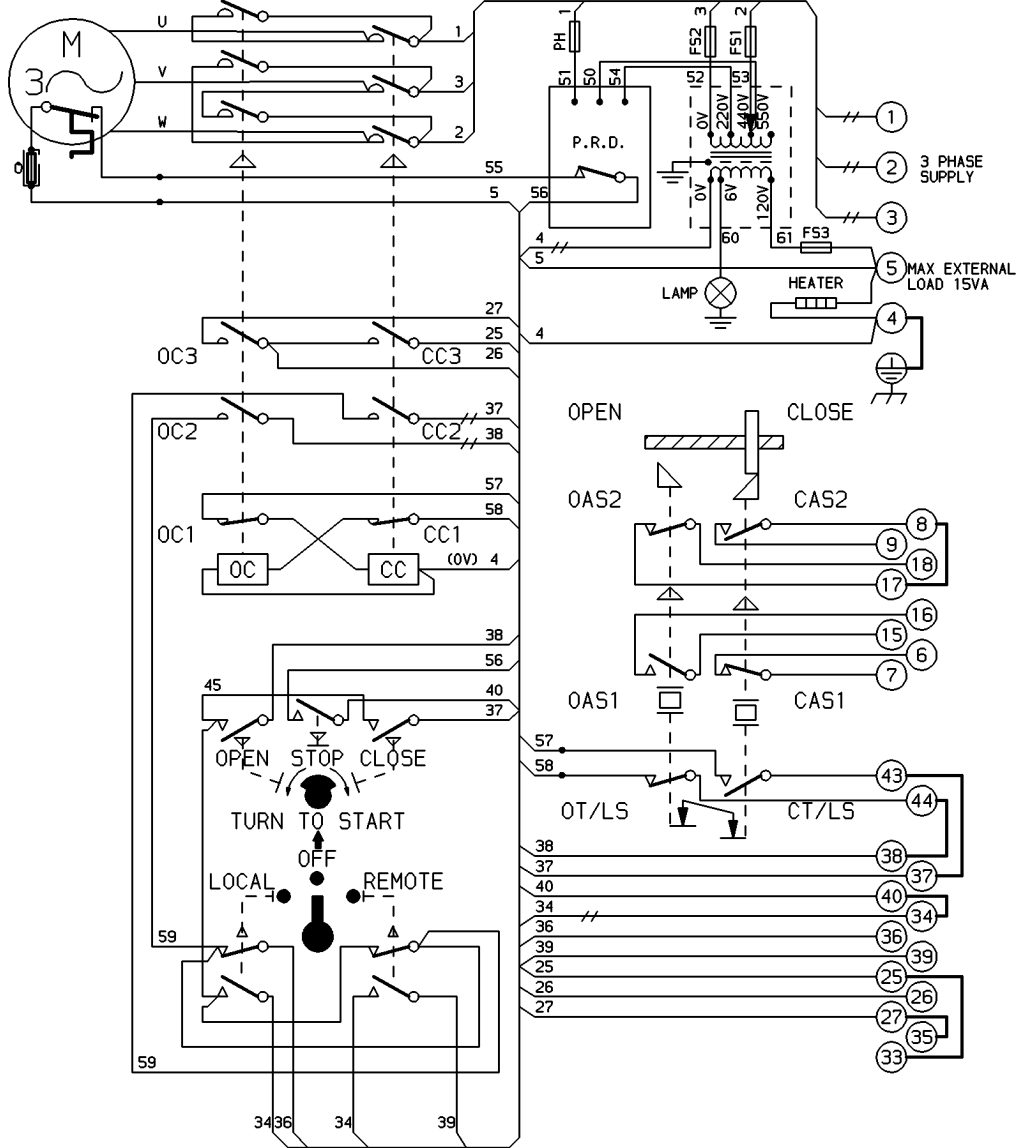


CIRCUIT IS DRAWN FOR A VALVE IN THE FULLY CLOSED POSITION  
 FOR MODEL No. 98A99- P.R.D.s (BLACK CASE) WIRE 54 CONNECTS TO 0V.



CIRCUIT DIAGRAM No - REV  
**1411-50-02**

**WARNING**

- DO NOT RUN ACTUATOR TO LIMITS WITH INCORRECT PHASE ROTATION
- O - OPEN
- C - CLOSE
- OC - OPEN CONTACTOR
- CC - CLOSE CONTACTOR
- OC1 & CC1 - CONTACTOR INTERLOCK
- OC2 & CC2 - CONTACTOR MAINTAINING CONTACT
- OC3 & CC3 - CONTACTOR AUXILIARY CONTACT
- T/LS - TORQUE/LIMITSWITCH
- AS1 - AUXILIARY LIMIT SWITCH MAKE CONTACT AT END OF TRAVEL
- AS2 - AUXILIARY LIMIT SWITCH BREAK CONTACT AT END OF TRAVEL
- LINK SUPPLIED BY ROTORK

THERMAL FUSE. ATEX APPROVED UNITS ONLY.

FOR TYPICAL REMOTE CONTROL INDICATING, MONITORING AND ALARM CIRCUITS SEE PUBLICATION AE4.0

FUSES FS1, 2, 3 & PH 500 mA

WIRES ARE IDENTIFIED AT EACH END BY TERMINAL No. OR BY WIRE No. SHOWN

— INDICATES TWO WIRES TERMINATED

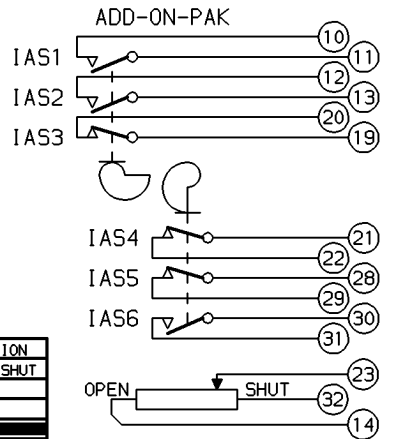
IAS1/2/3 - ADJUSTABLE TO OPERATE TOGETHER AT ANY POSITION (DRAWN AS FOR EXTRA OPEN AUXILIARY)

IAS4/5/6 - ADJUSTABLE TO OPERATE TOGETHER AT ANY POSITION (DRAWN AS FOR EXTRA CLOSE AUXILIARY)

IAS 1 TO 6 INTERMEDIATE AUXILIARY SWITCHES. CONTACT FUNCTIONS MAY BE REVERSED BY SETTING CAM TO RELEASE INSTEAD OF DEPRESS SWITCH AS ILLUSTRATED

CONTROL CIRCUIT SCHEMATIC  
 No. WS1411-50

C.S.A. NOTE.  
 FOR C.S.A. ONLY FUSES FS1 & FS2 ARE NOT FITTED.  
 POTENTIOMETER SUPPLY TO BE FUSED. (1 AMP MAXIMUM)



TORQUE AND LIMIT SWITCH OPERATION				ADD ON PAK 1 SWITCH OPERATION			
SWITCH	OPEN	INTER	SHUT	SWITCH	OPEN	INTER	SHUT
OT/LS				IAS1			
CT/LS				IAS2			
CAS1				IAS3			
CAS2				IAS4			
OAS1				IAS5			
OAS2				IAS6			

INDICATES SWITCH MADE

No <b>02</b>	DATE 31.01.06 P.J.W	REVISION ATEX THERMAL FUSE ADDED CHECKED D.A
-----------------	---------------------------	--



ROTORK CONTROLS LTD  
 BATH ENGLAND, BA1 3JQ.  
 (Phone 01225-733200)

ROTORK CONTROLS INC  
 ROCHESTER, NY 14624.  
 (Phone 585-328-1550)

DRAWN BY KS  
 DATE 16.12.05  
 CHECKED AS

SIMILAR TO --  
 JOB No --  
 M.I.No --

**1400 SERIES SYNCROPAK WITH AOP1 & PRD.**

CIRCUIT DIAGRAM No -REV  
**1411-50-02**