

1611A00-05

TRANSFORMER TAPPING OPTIONS

Pt No 33653 (TYPE AA)

TAP	NOM	50/60HZ	50HZ	60HZ
W	220/230	176-242	198-259	
X	380/400	304-418	342-446	
Y	415/420	332-457	374-487	
Z	440/460	352-484	396-517	

FUSE QF2 - 250mA ANTI-SURGE

Pt No 33642 (TYPE BB)

TAP	NOM	50/60HZ	50HZ	60HZ
W	346/380	285-388	321-419	
X	480/500	406-552	432-564	
Y	240/240	192-261	216-282	
Z*	550/575	445-605	501-654	

FUSE QF2 - 250mA ANTI-SURGE

* 150mA ANTI-SURGE

Pt No 31836 (TYPE C)

TAP	NOM	50/60HZ	50HZ	60HZ
X	660/660	534-726	600-726	

FUSE QF2 - 150mA ANTI-SURGE

ALL TRANSFORMER TYPES - QF4 500mA SLOW BLOW
WHEN FITTED QF1 AND QF3 WILL BE AS QF2.

MAX EXTERNAL LOAD ON TERMINALS 4 & 5 TO BE 6VA.

0 - OPEN
C - CLOSE

C1 & C2 - CONTACTOR COILS.

T/LS - TORQUE/LIMITSWITCH

AS1 - AUXILIARY LIMIT SWITCH

MAKE CONTACT AT END OF TRAVEL

AS2 - AUXILIARY LIMIT SWITCH

BREAK CONTACT AT END OF TRAVEL

WIRES ARE IDENTIFIED AT EACH END BY TERMINAL No. OR BY WIRE No. SHOWN

FOR TYPICAL REMOTE CONTROL INDICATING, MONITORING AND ALARM CIRCUITS SEE PUBLICATION AE4/2

CONTROL SIGNAL THRESHOLD VOLTAGES

MAXIMUM 'OFF' 3V.

MINIMUM CONTROL SIGNAL 300ms.

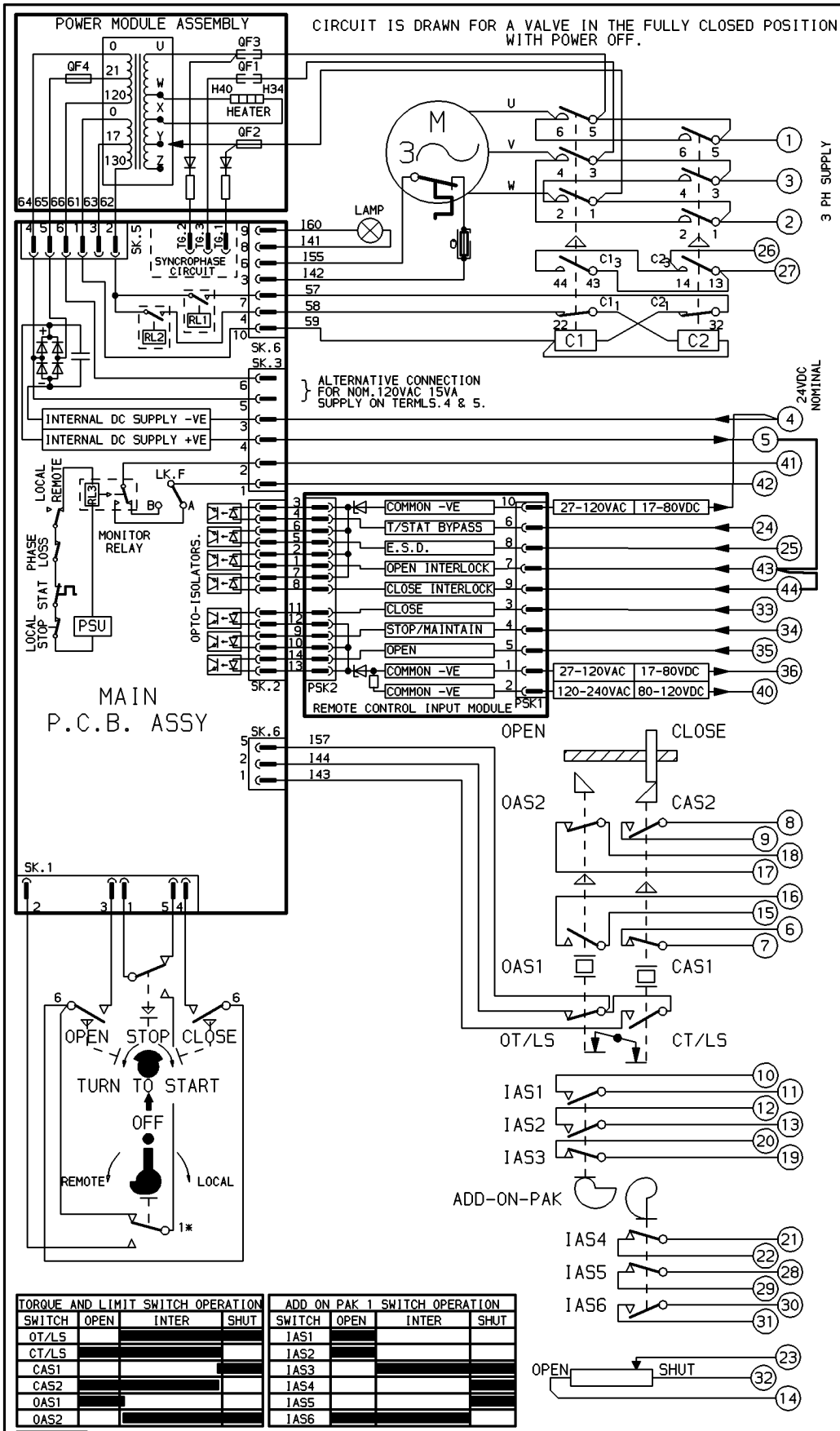
IAS1/2/3 - ADJUSTABLE TO OPERATE TOGETHER AT ANY POSITION (DRAWN AS FOR EXTRA OPEN AUXILIARY)

IAS4/5/6 - ADJUSTABLE TO OPERATE TOGETHER AT ANY POSITION (DRAWN AS FOR EXTRA CLOSE AUXILIARY)

IAS 1 TO 6 INTERMEDIATE AUXILIARY SWITCHES, CONTACT FUNCTIONS MAY BE REVERSED BY SETTING CAM TO RELEASE INSTEAD OF DEPRESS SWITCH AS ILLUSTRATED

⚡ THERMAL FUSE. ATEX APPROVED UNITS ONLY.

CIRCUIT IS DRAWN FOR A VALVE IN THE FULLY CLOSED POSITION WITH POWER OFF.



TORQUE AND LIMIT SWITCH OPERATION			
SWITCH	OPEN	INTER	SHUT
OT/LS			
CT/LS			
CAS1			
CAS2			
OAS1			
OAS2			

ADD ON PAK 1 SWITCH OPERATION			
SWITCH	OPEN	INTER	SHUT
IAS1			
IAS2			
IAS3			
IAS4			
IAS5			
IAS6			

INDICATES SWITCH MADE

No	DATE	REVISION
05	09/30/78	ATEX THERMAL FUSE ADDED



ROTORK CONTROLS LTD
BATH ENGLAND, BA1 3JQ.
Phone 01225-733200

ROTORK CONTROLS INC
ROCHESTER, NY 14624.
tel (716) 328-1550

DRAWN BY K.S
DATE 240887
CHECKED J.R

SIMILAR TO
JOB No -
M.I.No -

1600 MK4 + AOP1.

CIRCUIT DIAGRAM No -REV

1611A00-05