

1612A71-04

TRANSFORMER TAPPING OPTIONS

Pt No 33653 (TYPE AA)

| TAP | NOM 50/60HZ | 50HZ | 60HZ |
|-----|-------------|---------|---------|
| W | 220/230 | 176-242 | 198-259 |
| X | 380/400 | 304-418 | 342-446 |
| Y | 415/420 | 332-457 | 374-487 |
| Z | 440/460 | 352-484 | 396-517 |

FUSE QF2 - 250mA ANTI-SURGE

Pt No 33642 (TYPE BB)

| TAP | NOM 50/60HZ | 50HZ | 60HZ |
|-----|-------------|---------|---------|
| W | 346/380 | 285-388 | 321-419 |
| X | 480/500 | 406-552 | 432-564 |
| Y | 240/240 | 192-261 | 216-282 |
| Z* | 550/575 | 445-605 | 501-654 |

FUSE QF2 - 250mA ANTI-SURGE
* 150mA ANTI-SURGE

Pt No 31836 (TYPE C)

| TAP | NOM 50/60HZ | 50HZ | 60HZ |
|-----|-------------|---------|---------|
| X | 660/660 | 534-726 | 600-726 |

FUSE QF2 - 150mA ANTI-SURGE

ALL TRANSFORMER TYPES - QF4 500mA SLOW BLOW
WHEN FITTED QF1 AND QF3 WILL BE AS QF2.

MAX EXTERNAL LOAD ON TERMINALS 4 & 5 TO BE 15VA.

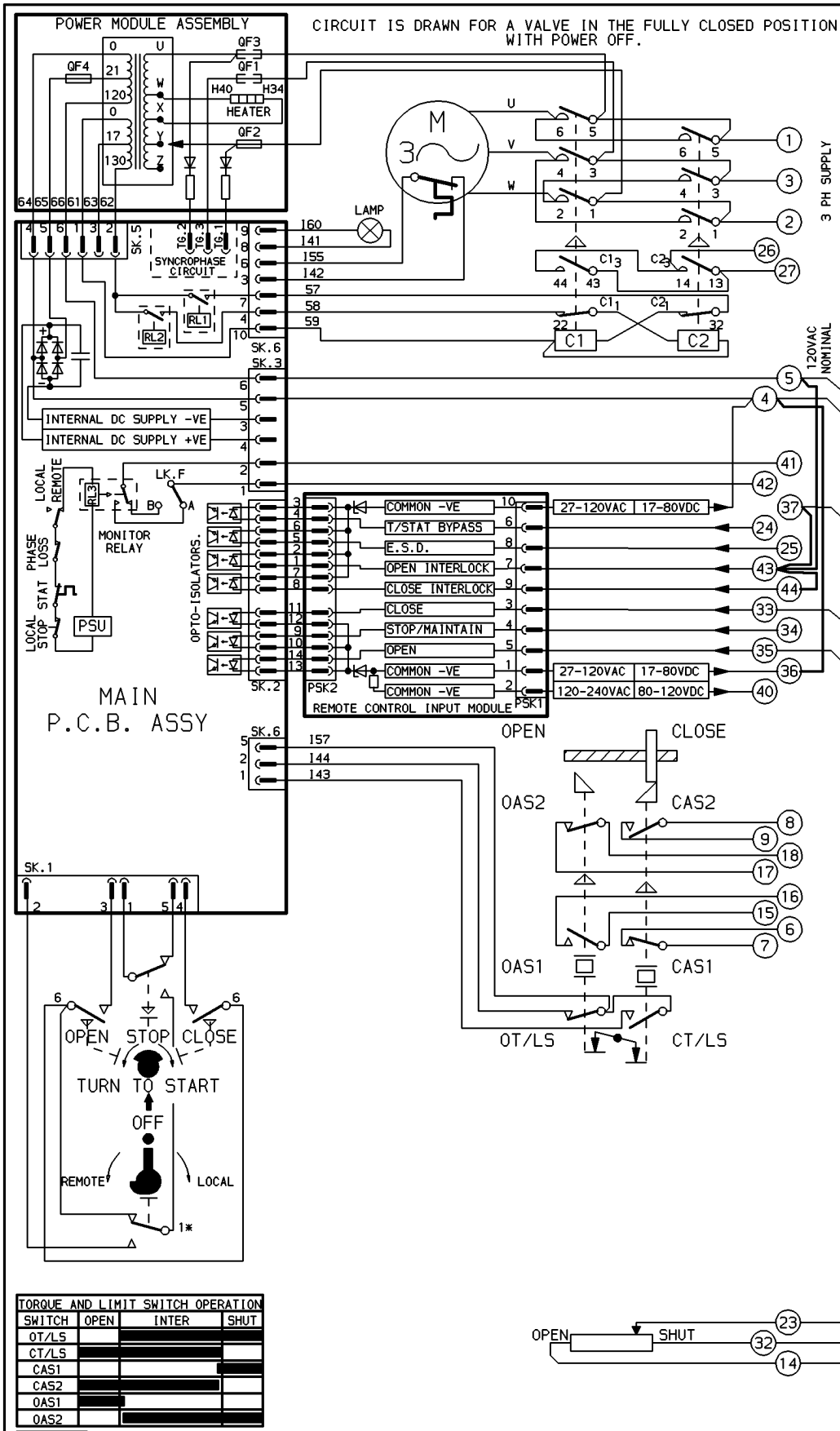
- O - OPEN
- C - CLOSE
- C1 & C2 - CONTACTOR COILS.
- T/LS - TORQUE/LIMITSWITCH
- AS1 - AUXILIARY LIMIT SWITCH MAKE CONTACT AT END OF TRAVEL
- AS2 - AUXILIARY LIMIT SWITCH BREAK CONTACT AT END OF TRAVEL

WIRES ARE IDENTIFIED AT EACH END BY TERMINAL NO. OR BY WIRE NO. SHOWN

FOR TYPICAL REMOTE CONTROL INDICATING, MONITORING AND ALARM CIRCUITS SEE PUBLICATION AE4/2

CONTROL SIGNAL THRESHOLD VOLTAGES
MAXIMUM 'OFF' 3V.
MINIMUM CONTROL SIGNAL 300mS.

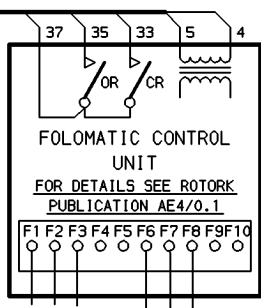
CIRCUIT IS DRAWN FOR A VALVE IN THE FULLY CLOSED POSITION WITH POWER OFF.



TORQUE AND LIMIT SWITCH OPERATION

| SWITCH | OPEN | INTER | SHUT |
|--------|------|-------|------|
| OT/LS | | | |
| CT/LS | | | |
| CAS1 | | | |
| CAS2 | | | |
| OAS1 | | | |
| OAS2 | | | |

INDICATES SWITCH MADE



| | | |
|-----------------|------|--|
| No 04 | DATE | REVISION SIMILAR TO 1612A71 JOB No --- FUSE RATINGS REVISED. 041091 |
|-----------------|------|--|



ROTORK CONTROLS LTD
BATH ENGLAND, BA1 3JQ.
tel (0225) 428451

ROTORK CONTROLS INC
ROCHESTER, NY 14624.
tel (716) 328-1550

DRAWN K.S
DATE 170887

CHECKED J.R
DATE 170887

1600 MK4 + FOLOMATIC

CIRCUIT DIAGRAM No -REV
1612A71-04